

**22 April 2020 Daily Report on COVID-19**

(1) Number of COVID-19 Cases

**Figure 1.1: Number of Cases Reported over the Past 14 Days**

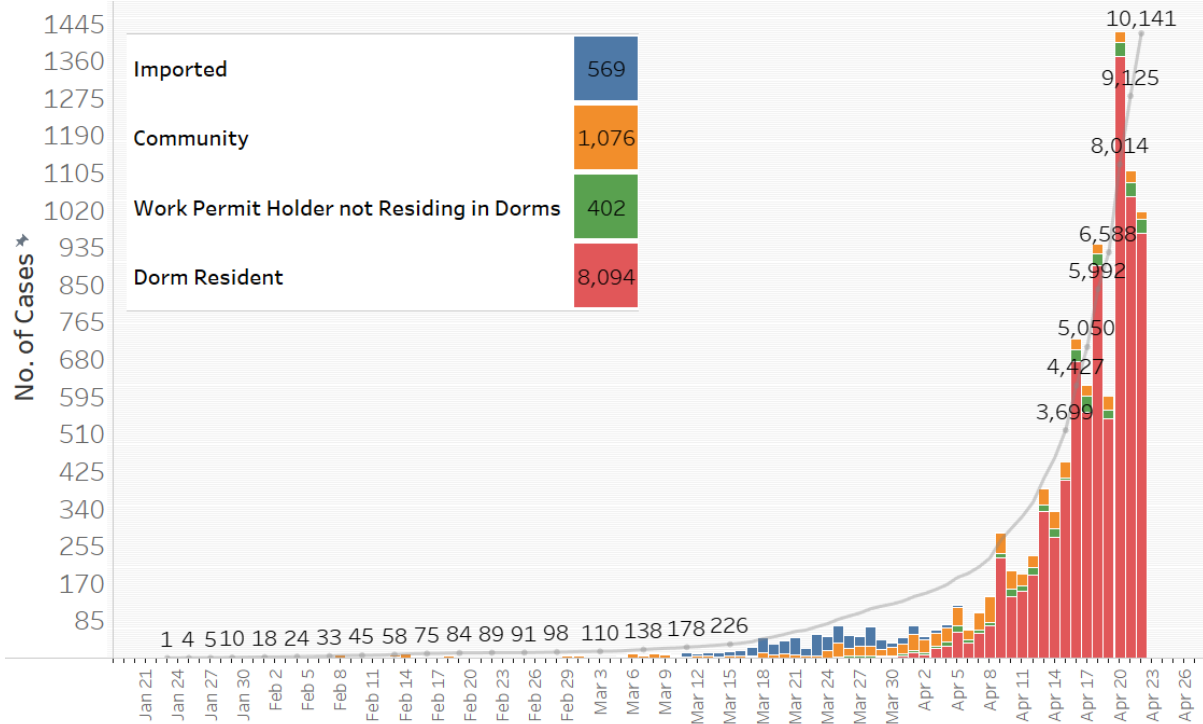
Press Release Date	Imported	Non-Imported Cases															Total Cases		
		Community Cases (residents & pass holders excluding work permit holders and dorm residents)									Work permit holders not residing in dorms			Dorm Residents					
		Linked Cases				Unlinked Cases <sup>1</sup>					Sub-Total	Incidence Rate (per 100,000)	Linked Cases		Sub-Total	Incidence Rate (per 100,000)		No. of Cases	Incidence Rate (per 100,000)
		SC/SPR	G or F	Visitor	Sub-Total	SC/SPR	G or F	Visitor	Sub-Total	Linked Cases			Unlinked Cases <sup>2</sup>						
Before 9-Apr	565	375	49	2	426	200	18	4	222	648	-	70	30	100	-	310	-	1,623	
9-Apr	3	24	1	0	25	19	1	0	20	45	0.95	6	5	11	1.7	228	71	287	
10-Apr	0	22	1	0	23	18	0	0	18	41	0.87	10	6	16	2.4	141	44	198	
11-Apr	0	10	3	0	13	14	0	0	14	27	0.57	2	10	12	1.8	152	47	191	
12-Apr	0	9	1	0	10	14	2	0	16	26	0.55	12	7	19	2.9	188	58	233	
13-Apr	0	8	4	0	12	21	5	0	26	38	0.81	11	3	14	2.1	334	100	386	
14-Apr	0	15	2	0	17	21	2	0	23	40	0.85	12	7	19	2.9	275	85	334	
15-Apr	0	8	1	0	9	22	6	0	28	37	0.78	2	2	4	0.60	406	130	447	
16-Apr	0	6	2	0	8	16	2	0	18	26	0.55	14	12	26	3.9	676	210	728	
17-Apr	1	6	0	0	6	16	3	1	20	26	0.55	26	11	37	5.6	559	170	623	
18-Apr	0	3	1	0	4	11	7	0	18	22	0.47	21	6	27	4.1	893	280	942	
19-Apr	0	12	2	0	14	13	3	0	16	30	0.64	15	7	22	3.3	544	170	596	
20-Apr	0	7	4	0	11	11	3	0	14	25	0.53	16	14	30	4.5	1371	420	1,426	
21-Apr	0	1	5	0	6	19	3	0	22	28	0.59	14	19	33	5.0	1050	330	1,111	
22-Apr	0	3	1	0	4	12	1	0	13	17	0.36	20	12	32	4.8	967	300	1,016	
Total since start of outbreak	569	509	77	2	588	427	56	5	488	1,076	-	251	151	402	-	8,094	-	10,141	
Population at risk <sup>3</sup>										4,717,000				664,000		323,000		5,704,000	
Prevalence										0.023%				0.061%		2.51%		0.18%	

<sup>1</sup> Includes cases pending epi-investigation.

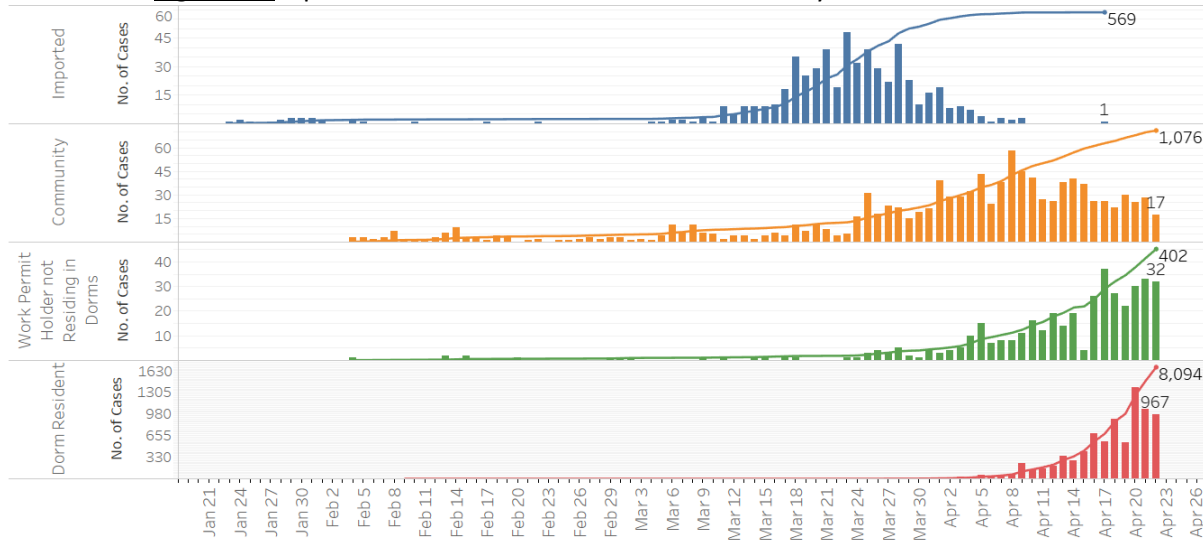
<sup>2</sup> Includes cases pending epi-investigation.

<sup>3</sup> Population at risk for community cases includes SC/PRs and other types of passes holders not residing in dormitories. Source: MOM and Singstat.

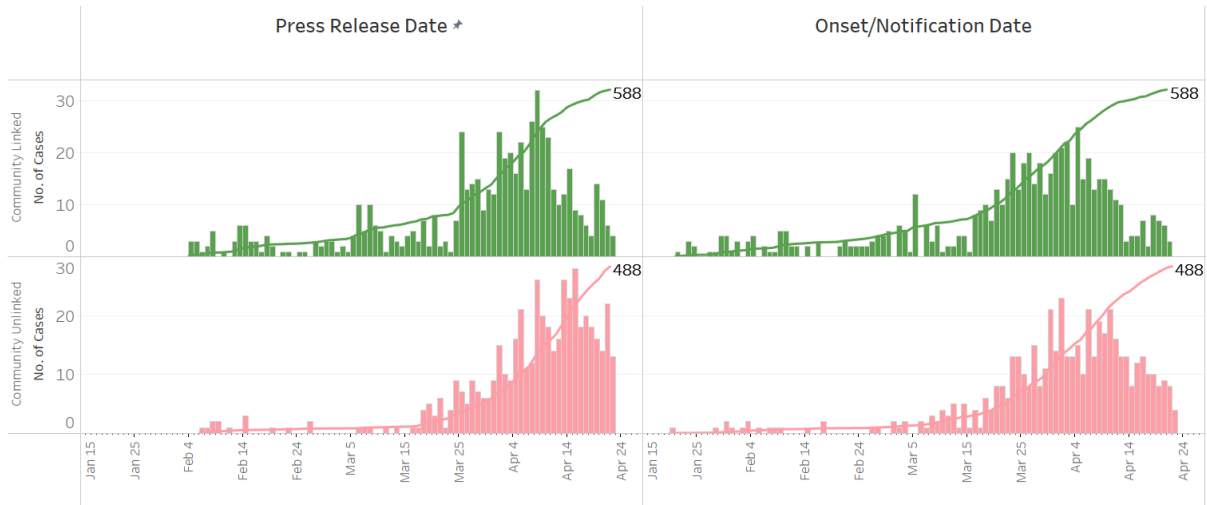
**Figure 1.2:** Epidemic Curve of the COVID-19 Outbreak by Press Release Date



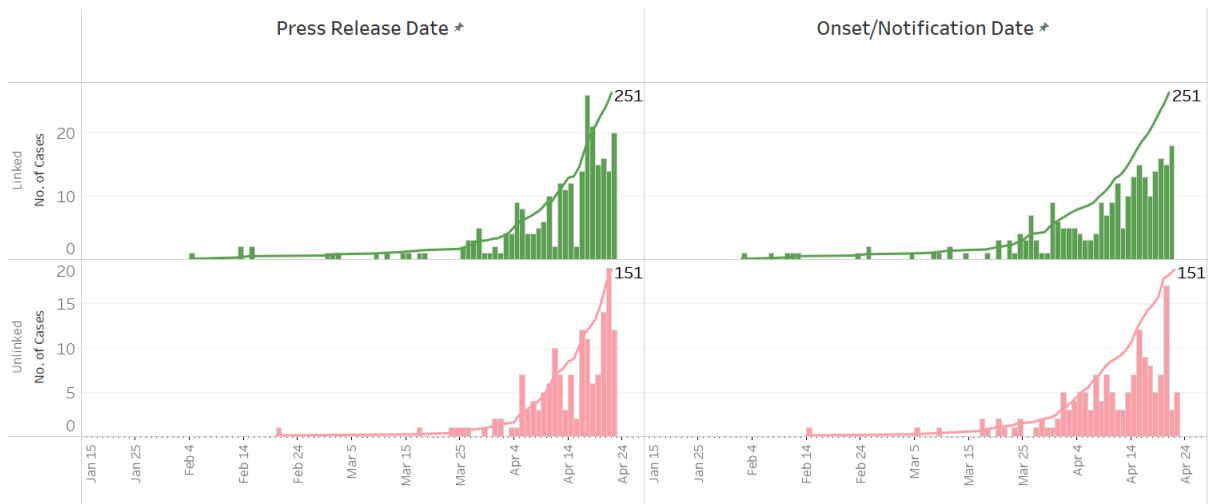
**Figure 1.3:** Epidemic Curve of the COVID-19 Outbreak by Press Release Date



**Figure 1.4:** Epidemic Curve of Linked and Unlinked Cases among the Community by Press Release Date (left panel) and by Symptom Onset or Notification Date<sup>4</sup> (right panel)



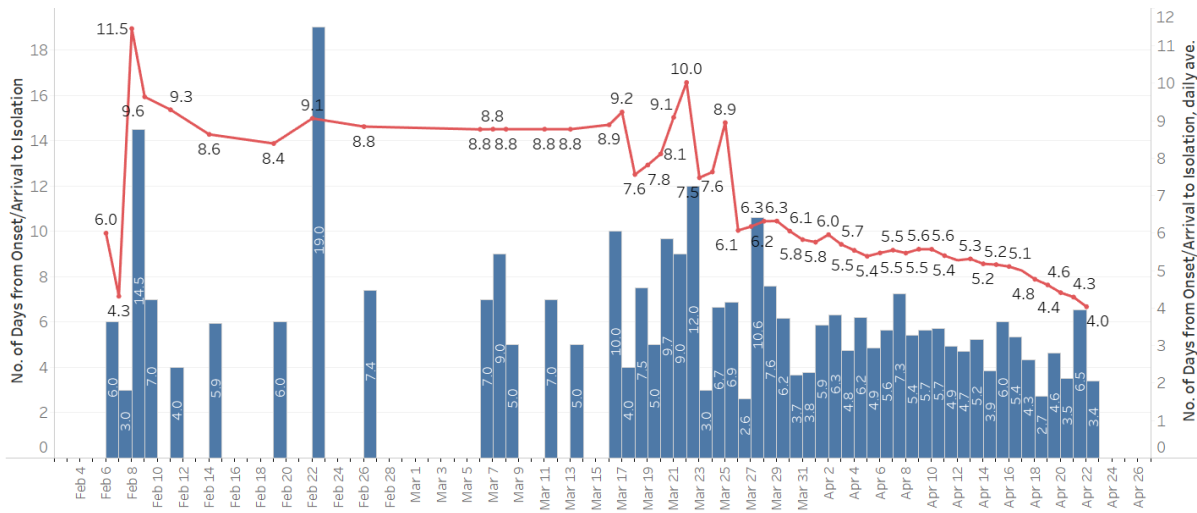
**Figure 1.5:** Epidemic Curve of Linked and Unlinked Cases among Work Permit Holders not Residing in Dorms by Press Release Date (left panel) and by Symptom Onset or Notification Date<sup>5</sup> (right panel)



<sup>4</sup> Date of notification was used for cases that did not display any symptoms. The numbers with onset in the past few days may see an increase as more cases are notified.

<sup>5</sup> Date of notification was used for cases that did not display any symptoms. The numbers with onset in the past few days may see an increase as more cases are notified.

**Figure 1.6:** Average Number of Days from Onset of Symptoms to Isolation for Community Unlinked Cases in Each Day (by Press Release Date)



Line represents the 14-day moving average, Bar represents the daily average.

**(2) Number of COVID-19 Cases in Hospitals and Community Isolation Facilities****Figure 2.1:** Summary of Cases by Status (Past 14 Days)

Press Release Date	Currently Admitted		Decanted <sup>6</sup>		Discharged	Demised	Total
	ICU	General Wards	In Isolation	Completed Isolation			
8 Apr	29	640	542	115	291	6	<b>1,623</b>
9 Apr	29	856	559	146	314	6	<b>1,910</b>
10 Apr	32	845 <sup>7</sup>	734 <sup>8</sup>	172	318	7	<b>2,108</b>
11 Apr	31	914	820	199	327	8	<b>2,299</b>
12 Apr	31	947	988	217	341	8	<b>2,532</b>
13 Apr	29	1,131	1,165	239	345	9	<b>2,918</b>
14 Apr	28	1,289	1,316	259	350	10	<b>3,252</b>
15 Apr	26	1,473	1,541	284	365	10	<b>3,699</b>
16 Apr	23	1,866	1,848	309	371	10	<b>4,427</b>
17 Apr	22	2,095	2,218	312	392	11	<b>5,050</b>
18 Apr	23	2,538	2,678	331	411	11	<b>5,992</b>
19 Apr	22	2,899	2,888	339	429	11	<b>6,588</b>
20 Apr	23	3,398*	3,782	351	449*	11	<b>8,014</b>
21 Apr	27	3,566	4,682	371	468	11	<b>9,125</b>
22 Apr	25	4,209	4,999	413	483	12	<b>10,141</b>

\*C948 was wrongly classified as discharged on 20 Apr

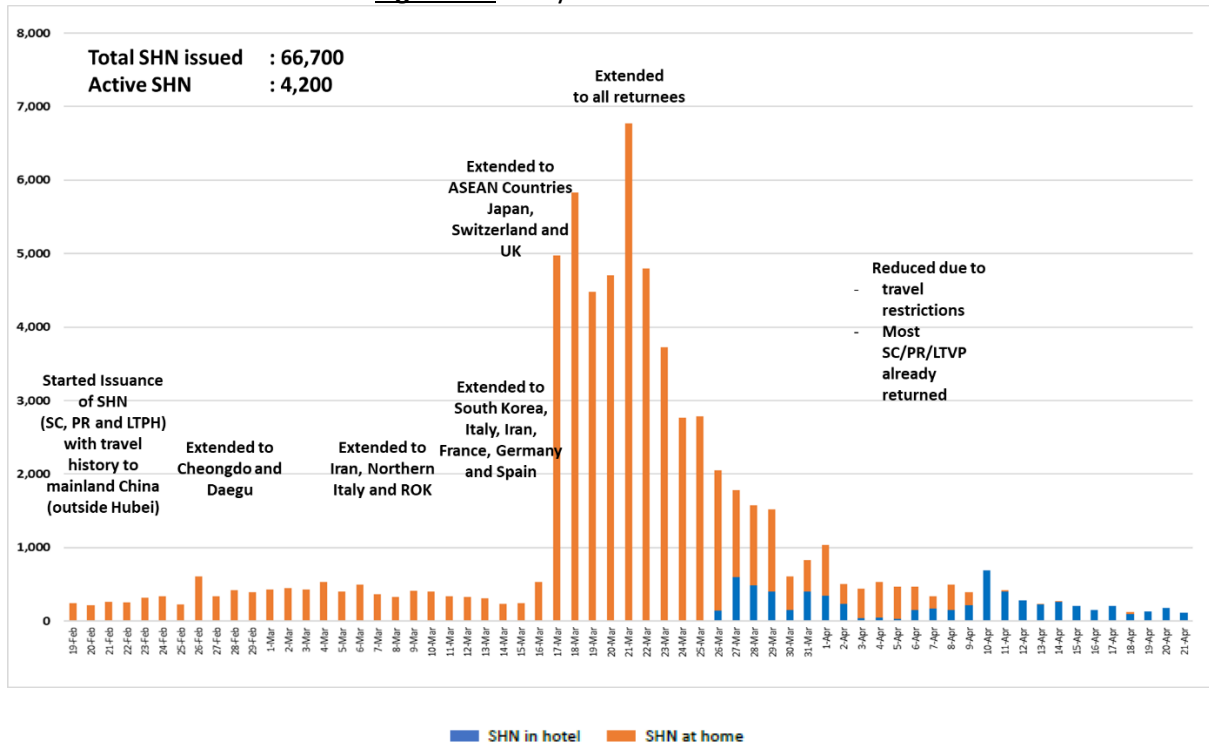
<sup>6</sup> Decanted to Community Isolation Facilities (i.e. D'Resort, EXPO), Private Hospitals (i.e. Concord International Hospital, Mt Elizabeth Hospital, Gleneagles Hospital, Mt Alvernia Hospital, Mt Elizabeth Novena Hospital, Parkway East Hospital, Farrer Park Hospital), and Community Hospitals (Bright Vision Hospital, St. Andrew's Community Hospital, Yishun Community Hospital, Jurong Community Hospital).

<sup>7</sup> S11 confirmed cases were classified on 9 Apr under "General Ward".

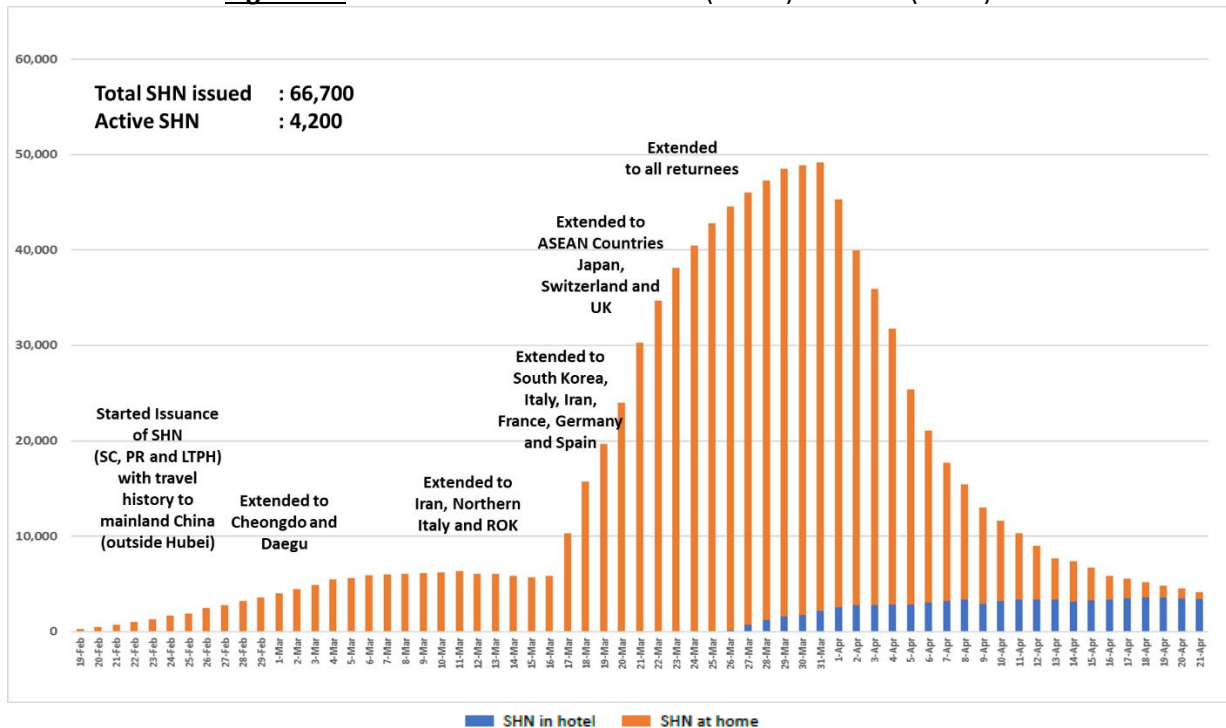
<sup>8</sup> S11 confirmed cases were re-classified on 10 Apr under "Decanted and in isolation".

(3) Number of Stay-Home-Notice (SHN) Issued

**Figure 3.1:** Daily Number of SHN issued

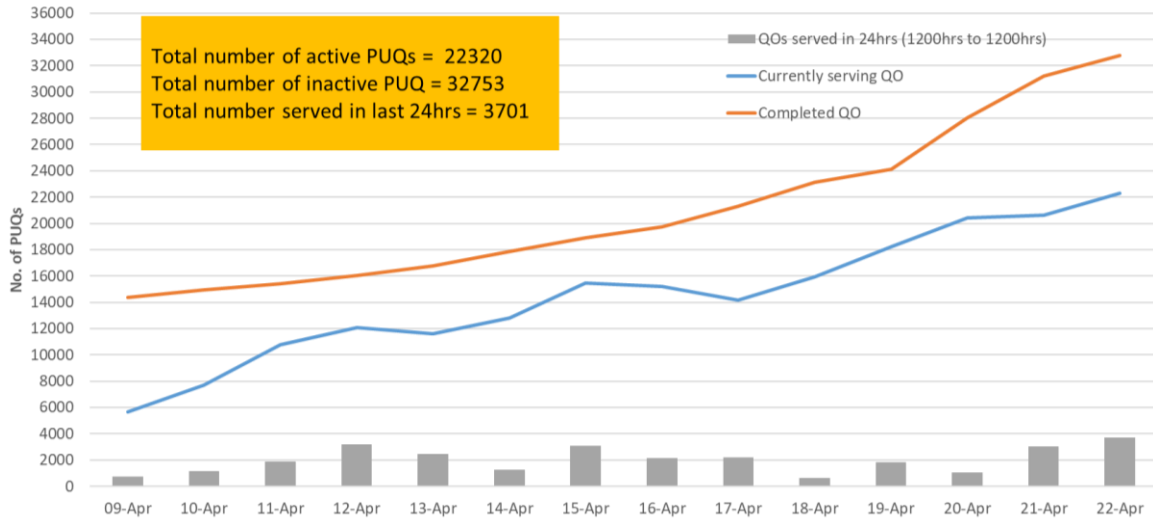


**Figure 3.2:** Active Stock Number of SHN (Home) and SHN (Hotel)

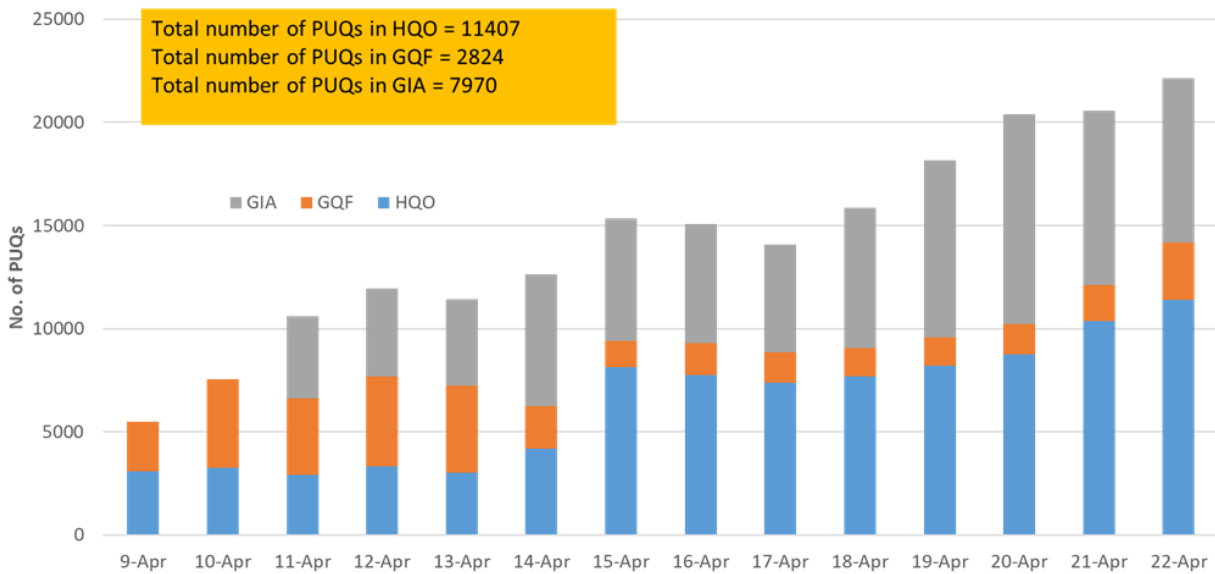


**(4) Number of Quarantine Order (QO) Issued**

**Figure 4.1:** Total and Daily Number of QOs Issued



**Figure 4.2:** Active Number of Persons Under Quarantine (PUQs)<sup>9</sup>



HQO = Home Quarantine Order  
 GQF = Government Quarantine Facility  
 GIA = Gazetted Isolation Area

<sup>9</sup> Excludes PUQs admitted to hospitals.