

**12 August 2020 Daily Report on COVID-19**

**(1) Number of COVID-19 Cases**

**Figure 1.1:** Number of Cases Reported over the Past 14 Days

| Press Release Date            | Imported | Non-Imported Cases           |                      |  |         |           |                             |                      |  |         |           |                             |   |              |   | All Cases |
|-------------------------------|----------|------------------------------|----------------------|--|---------|-----------|-----------------------------|----------------------|--|---------|-----------|-----------------------------|---|--------------|---|-----------|
|                               |          | Community Cases <sup>1</sup> |                      |  |         |           |                             |                      |  |         |           | Dorm Residents <sup>2</sup> |   |              |   |           |
|                               |          | Linked Cases                 |                      |  |         |           | Unlinked Cases <sup>3</sup> |                      |  |         |           | Sub-Total                   | Incidence Rate <sup>4</sup> (per 100,000) | No. of Cases | Incidence Rate <sup>4</sup> (per 100,000) |           |
|                               |          | SC/PR                        | G or F (work permit) | G or F (other pass types) <sup>5</sup> | Visitor | Sub-Total | SC/PR                       | G or F (work permit) | G or F (other pass types) <sup>5</sup> | Visitor | Sub-Total |                             |   |              |   |           |
| Before 30-Jul                 | 692      | 829                          | 357                  | 186                                    | 4       | 1,376     | 492                         | 189                  | 110                                    | 5       | 796       | 2,172                       | -   | 48,667       | -   | 51,531    |
| 30-Jul                        | 4        | 1                            | 3                    | 0                                      | 0       | 4         | 0                           | 0                    | 0                                      | 0       | 0         | 4                           | 0.074                                     | 270          | 84  | 278       |
| 31-Jul                        | 3        | 0                            | 0                    | 1                                      | 0       | 1         | 0                           | 1                    | 1                                      | 0       | 2         | 3                           | 0.056                                     | 390          | 120                                       | 396       |
| 1-Aug                         | 5        | 0                            | 0                    | 0                                      | 0       | 0         | 1                           | 0                    | 0                                      | 0       | 1         | 1                           | 0.019                                     | 301          | 93  | 307       |
| 2-Aug                         | 5        | 1                            | 0                    | 0                                      | 0       | 1         | 0                           | 0                    | 0                                      | 0       | 0         | 1                           | 0.019                                     | 307          | 95  | 313       |
| 3-Aug                         | 9        | 0                            | 0                    | 0                                      | 0       | 0         | 0                           | 0                    | 0                                      | 1       | 1         | 1                           | 0.019                                     | 216          | 67  | 226       |
| 4-Aug                         | 7        | 1                            | 1                    | 0                                      | 0       | 2         | 0                           | 0                    | 0                                      | 0       | 0         | 2                           | 0.037                                     | 286          | 89  | 295       |
| 5-Aug                         | 4        | 0                            | 0                    | 0                                      | 0       | 0         | 0                           | 1                    | 0                                      | 0       | 1         | 1                           | 0.019                                     | 903          | 280                                       | 908       |
| 6-Aug                         | 4        | 0                            | 1                    | 0                                      | 0       | 1         | 3                           | 0                    | 0                                      | 0       | 3         | 4                           | 0.074                                     | 293          | 91  | 301       |
| 7-Aug                         | 6        | 0                            | 0                    | 0                                      | 0       | 0         | 1                           | 0                    | 0                                      | 0       | 1         | 1                           | 0.019                                     | 235          | 73  | 242       |
| 8-Aug                         | 6        | 1                            | 0                    | 0                                      | 0       | 1         | 0                           | 0                    | 0                                      | 0       | 0         | 1                           | 0.019                                     | 125          | 39  | 132       |
| 9-Aug                         | 3        | 0                            | 0                    | 0                                      | 0       | 0         | 1                           | 0                    | 0                                      | 0       | 1         | 1                           | 0.019                                     | 171          | 53  | 175       |
| 10-Aug                        | 12       | 1                            | 0                    | 0                                      | 0       | 1         | 0                           | 0                    | 0                                      | 0       | 0         | 1                           | 0.019                                     | 175          | 54  | 188       |
| 11-Aug                        | 3        | 2                            | 0                    | 0                                      | 0       | 2         | 0                           | 0                    | 0                                      | 0       | 0         | 2                           | 0.037                                     | 56           | 17  | 61        |
| 12-Aug                        | 11       | 1                            | 0                    | 0                                      | 0       | 1         | 0                           | 0                    | 0                                      | 0       | 0         | 1                           | 0.019                                     | 30           | 9.3                                       | 42        |
| Total since start of outbreak | 774      | 837                          | 362                  | 187                                    | 4       | 1,390     | 498                         | 191                  | 111                                    | 6       | 806       | 2,196                       | -   | 52,425       | -   | 55,395    |
| Population at risk            |          |                              |                      |  |         |           |                             |                      |  |         |           | 5,381,000                   |   | 323,000      |   | 5,704,000 |
| Prevalence                    |          |                              |                      |  |         |           |                             |                      |  |         |           | 0.04%                       |   | 16.23%       |   | 0.97%     |

<sup>1</sup> Previously we had tracked the work permit holders living outside dormitories as a separate category, and put a large number of these workers on Stay Home Notices (SHN). The SHN for these workers has since expired. Hence we have now updated the definition of “Cases in the Community” to include all cases (including amongst work permit holders) that are detected outside of the dormitories.

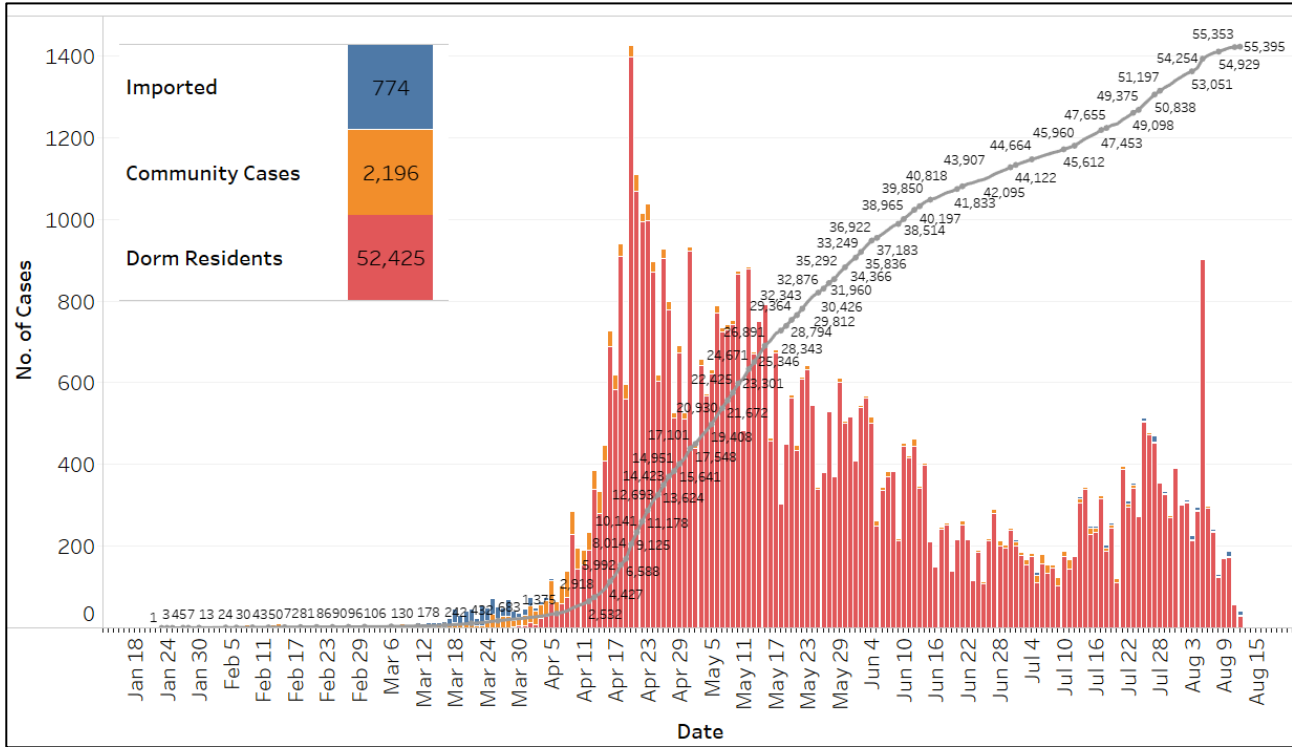
<sup>2</sup> Includes PR and Visitor residing in dorms.

<sup>3</sup> Includes cases pending epi-investigation.

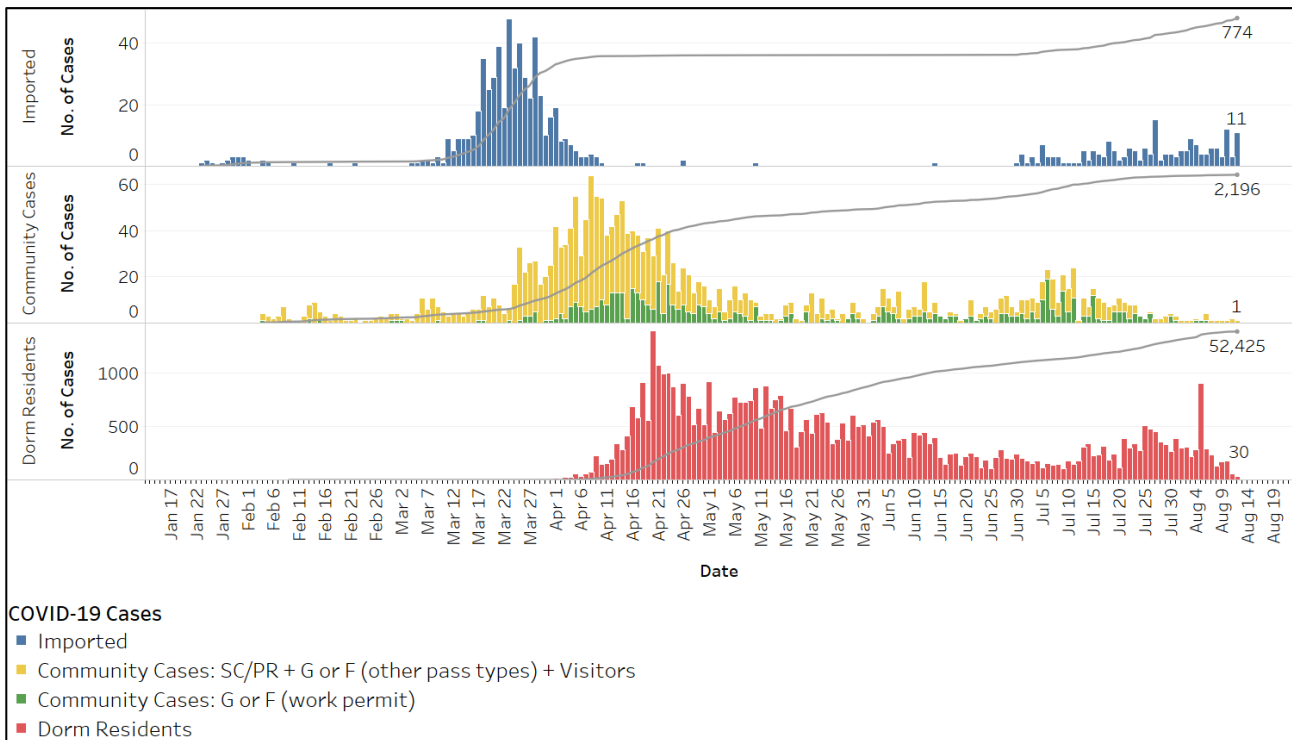
<sup>4</sup> Incidence rates are rounded to two significant figures.

<sup>5</sup> Includes Training Work Permit (TWP) holders.

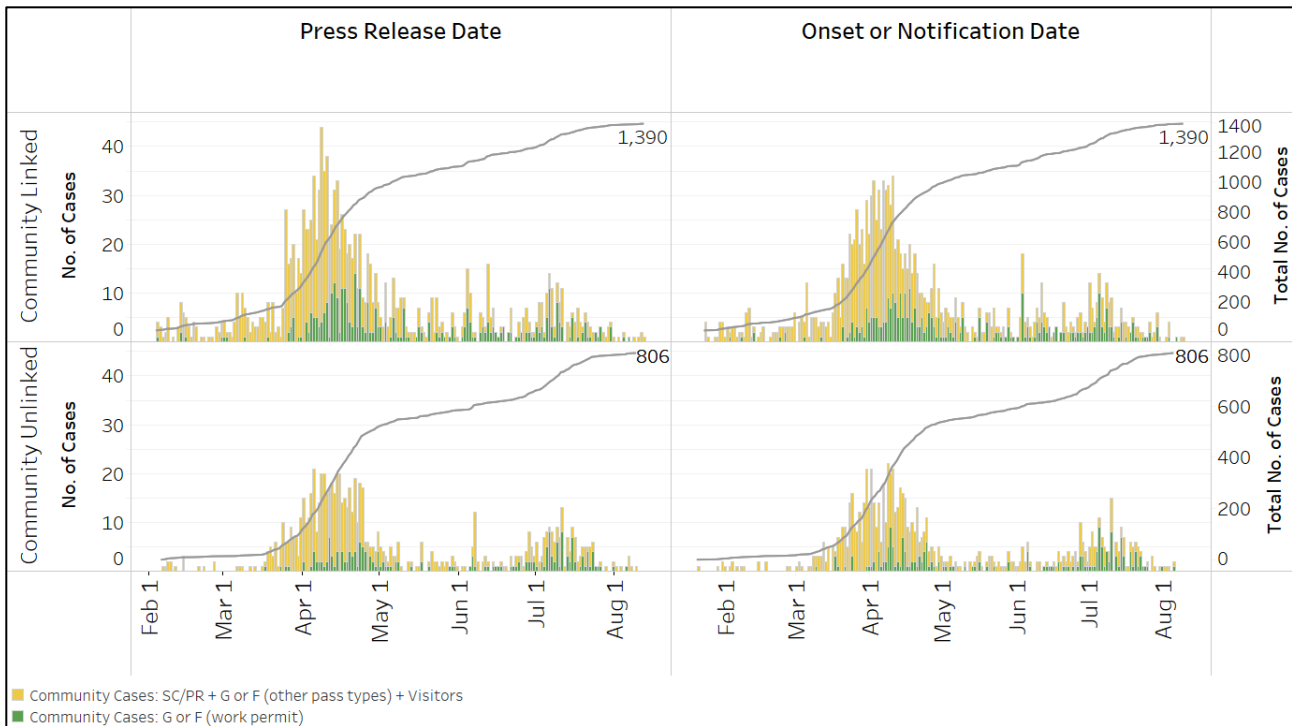
**Figure 1.2:** Epidemic Curve of the COVID-19 Outbreak by Press Release Date



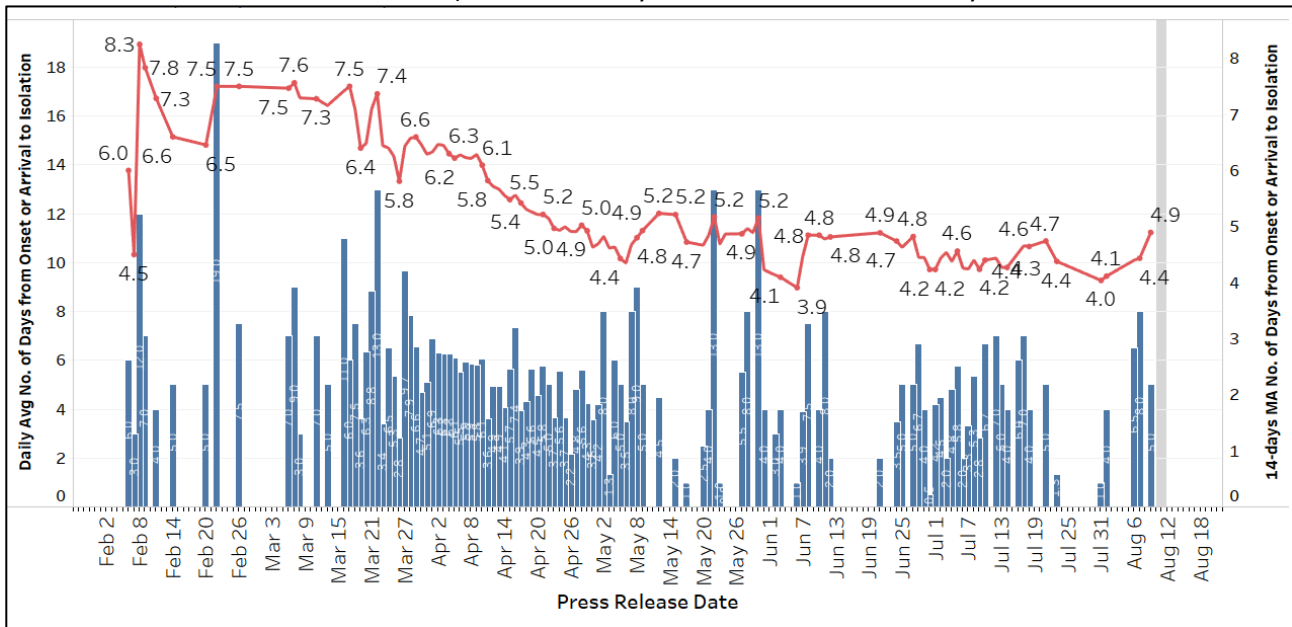
**Figure 1.3:** Epidemic Curve of the COVID-19 Outbreak by Press Release Date



**Figure 1.4:** Epidemic Curve of Linked and Unlinked Cases among the Community by Press Release Date (left panel) and by Symptom Onset or Notification Date<sup>6</sup> (right panel)



**Figure 1.5:** Average Number of Days from Onset of Symptoms to Isolation (QO, MOH contact, notification or admission) for Community Unlinked Cases in Each Day<sup>7</sup>



Line represents the 14-day moving average; Bar represents the daily average<sup>8</sup>

<sup>6</sup> Date of notification was used for cases that did not display any symptoms. The numbers with onset in the past few days may see an increase as more cases are notified.

<sup>7</sup> Area in grey demarcates the data points for the past 3 days where some cases are still pending investigation. The bar chart shows the daily average number of days from onset date to isolation, while the line chart shows the moving average for the past 14 days. Both charts exclude cases with missing onset dates in the computation of the average.

<sup>8</sup> Asymptomatic community unlinked cases are not reflected in this chart. Community unlinked cases with symptoms who are isolated on the same day that symptoms occurred would have an isolation time of 0.

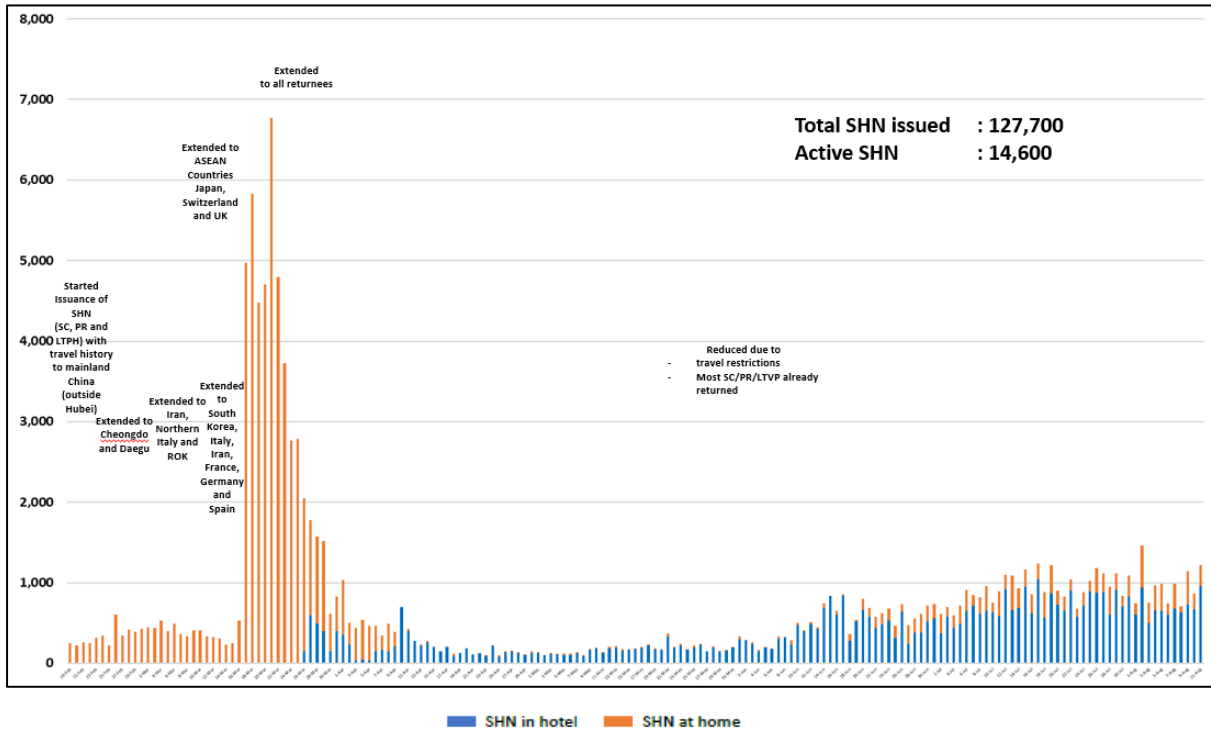
**(2) Number of COVID-19 Cases in Hospitals and Community Care Facilities****Figure 2.1:** Summary of Confirmed Cases by Status in the Past 14 Days

| Press Release Date | Currently Admitted in Hospitals |               | In Care Facilities <sup>9</sup> | Total Recovered     |                          | Total Demised | Total  |
|--------------------|---------------------------------|---------------|---------------------------------|---------------------|--------------------------|---------------|--------|
|                    | ICU                             | General Wards |                                 | Completed Isolation | Discharged from Hospital |               |        |
| 30-Jul             | 0                               | 148           | 5,326                           | 44,264              | 2,044                    | 27            | 51,809 |
| 31-Jul             | 0                               | 136           | 5,551                           | 44,436              | 2,055                    | 27            | 52,205 |
| 1-Aug              | 0                               | 117           | 5,628                           | 44,677              | 2,063                    | 27            | 52,512 |
| 2-Aug              | 0                               | 109           | 5,763                           | 44,852              | 2,074                    | 27            | 52,825 |
| 3-Aug              | 1                               | 114           | 5,730                           | 45,096              | 2,083                    | 27            | 53,051 |
| 4-Aug              | 1                               | 124           | 5,740                           | 45,364              | 2,090                    | 27            | 53,346 |
| 5-Aug              | 1                               | 125           | 6,333                           | 45,668              | 2,100                    | 27            | 54,254 |
| 6-Aug              | 0                               | 112           | 6,385                           | 45,925              | 2,106                    | 27            | 54,555 |
| 7-Aug              | 0                               | 124           | 6,334                           | 46,196              | 2,116                    | 27            | 54,797 |
| 8-Aug              | 0                               | 145           | 6,174                           | 46,457              | 2,126                    | 27            | 54,929 |
| 9-Aug              | 0                               | 135           | 6,027                           | 46,778              | 2,137                    | 27            | 55,104 |
| 10-Aug             | 0                               | 112           | 5,544                           | 47,453              | 2,156                    | 27            | 55,292 |
| 11-Aug             | 0                               | 104           | 5,094                           | 47,960              | 2,168                    | 27            | 55,353 |
| 12-Aug             | 0                               | 92            | 4,756                           | 48,341              | 2,179                    | 27            | 55,395 |

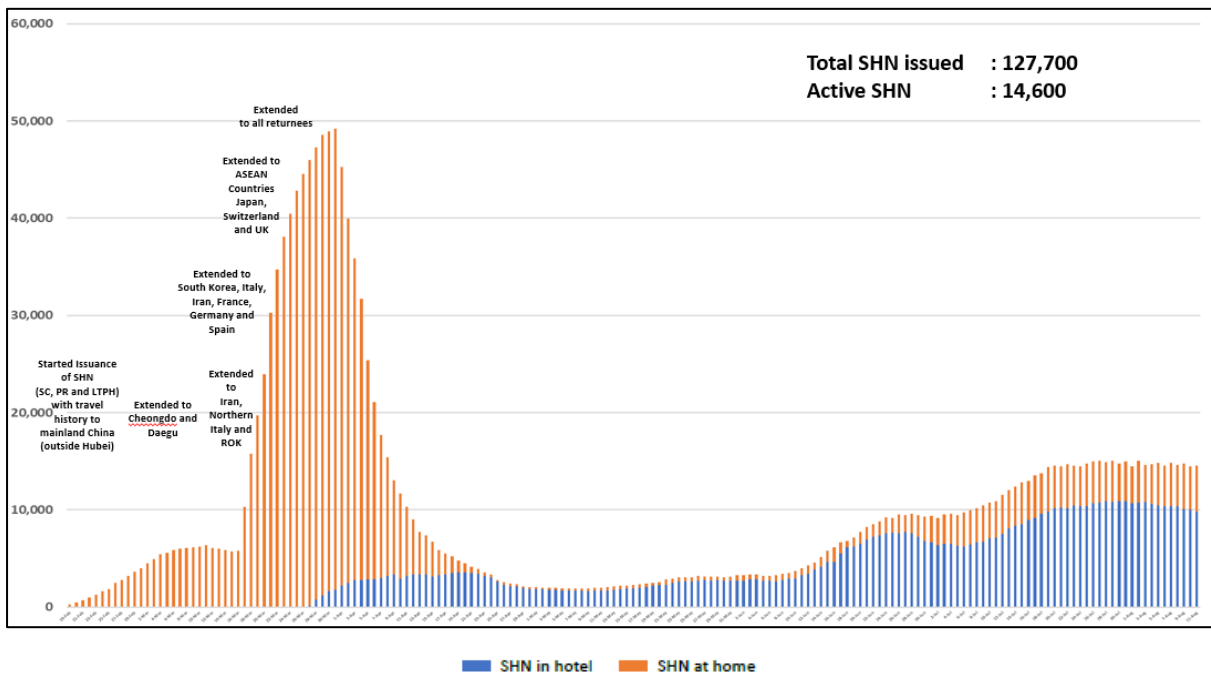
<sup>9</sup> Community Care Facilities (i.e. D'Resort, EXPO, Changi Exhibition Centre, Big Box), Private Hospitals (i.e. Concord International Hospital, Mt Elizabeth Hospital, Gleneagles Hospital, Mt Elizabeth Novena Hospital, Parkway East Hospital), Community Hospitals (i.e. Bright Vision Hospital, St. Andrew's Community Hospital, Jurong Community Hospital) and other care facilities.

### (3) Number of Stay-Home-Notice (SHN) Issued

**Figure 3.1:** Daily Number of SHN issued

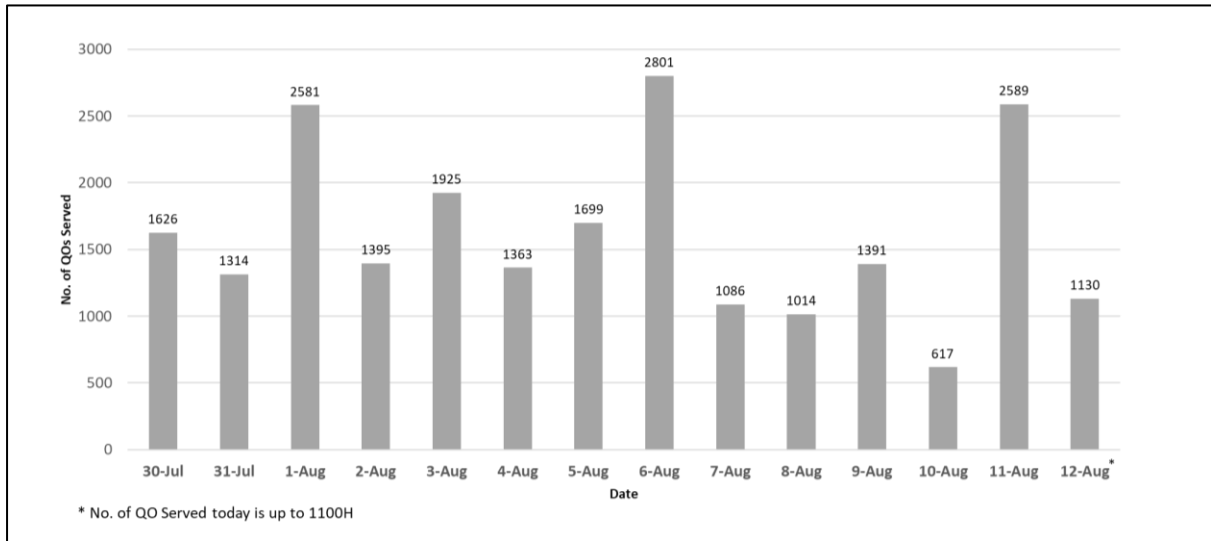


**Figure 3.2:** Active Stock Number of SHN (Home) and SHN (Hotel)



**(4) Number of Quarantine Order (QO) Issued**

**Figure 4.1:** Daily Number of QOs Issued



**Figure 4.2:** Active Number of Persons Under Quarantine (PUQs)

