

**13 August 2020 Daily Report on COVID-19****(1) Number of COVID-19 Cases****Figure 1.1:** Number of Cases Reported over the Past 14 Days

Press Release Date	Imported	Non-Imported Cases														All Cases
		Community Cases <sup>1</sup>										Dorm Residents <sup>2</sup>				
		Linked Cases					Unlinked Cases <sup>3</sup>					Sub-Total	Incidence Rate <sup>4</sup> (per 100,000)	No. of Cases	Incidence Rate <sup>4</sup> (per 100,000)	
		SC/PR	G or F (work permit)	G or F (other pass types) <sup>5</sup>	Visitor	Sub-Total	SC/PR	G or F (work permit)	G or F (other pass types) <sup>5</sup>	Visitor	Sub-Total					
Before 31-Jul	696	830	360	186	4	1,380	492	189	110	5	796	2,176	-	48,937	-	51,809
31-Jul	3	0	0	1	0	1	0	1	1	0	2	3	0.056	390	120	396
1-Aug	5	0	0	0	0	0	1	0	0	0	1	1	0.019	301	93	307
2-Aug	5	1	0	0	0	1	0	0	0	0	0	1	0.019	307	95	313
3-Aug	9	0	0	0	0	0	0	0	0	1	1	1	0.019	216	67	226
4-Aug	7	1	1	0	0	2	0	0	0	0	0	2	0.037	286	89	295
5-Aug	4	0	0	0	0	0	0	1	0	0	1	1	0.019	903	280	908
6-Aug	4	0	1	0	0	1	3	0	0	0	3	4	0.074	293	91	301
7-Aug	6	0	0	0	0	0	1	0	0	0	1	1	0.019	235	73	242
8-Aug	6	1	0	0	0	1	0	0	0	0	0	1	0.019	125	39	132
9-Aug	3	0	0	0	0	0	1	0	0	0	1	1	0.019	171	53	175
10-Aug	12	1	0	0	0	1	0	0	0	0	0	1	0.019	175	54	188
11-Aug	3	2	0	0	0	2	0	0	0	0	0	2	0.037	56	17	61
12-Aug	11	1	0	0	0	1	0	0	0	0	0	1	0.019	30	9.3	42
13-Aug	6	1	1	0	0	2	0	3	0	0	3	5	0.093	91	28	102
Total since start of outbreak	780	838	363	187	4	1,392	498	194	111	6	809	2,201	-	52,516	-	55,497
Population at risk												5,381,000		323,000		5,704,000
Prevalence												0.04%		16.26%		0.97%

<sup>1</sup> Previously we had tracked the work permit holders living outside dormitories as a separate category, and put a large number of these workers on Stay Home Notices (SHN). The SHN for these workers has since expired. Hence we have now updated the definition of "Cases in the Community" to include all cases (including amongst work permit holders) that are detected outside of the dormitories.

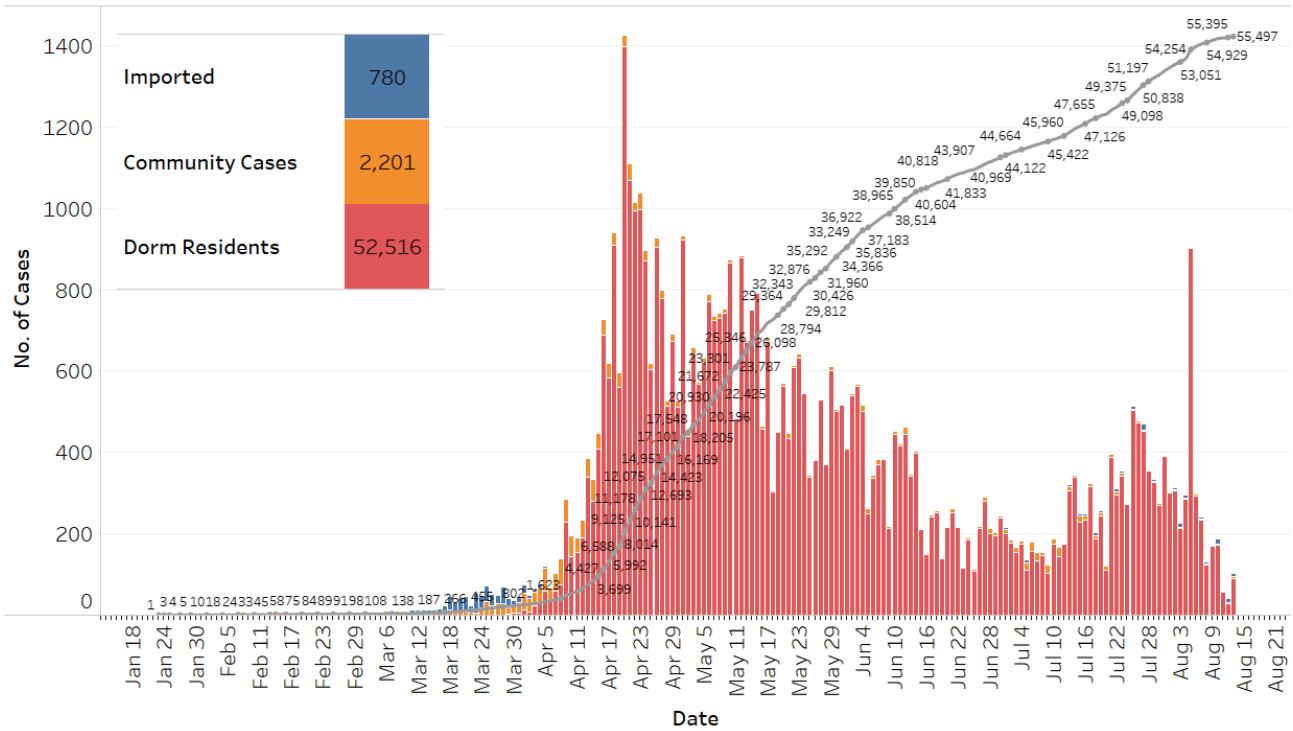
<sup>2</sup> Includes PR and Visitor residing in dorms.

<sup>3</sup> Includes cases pending epi-investigation.

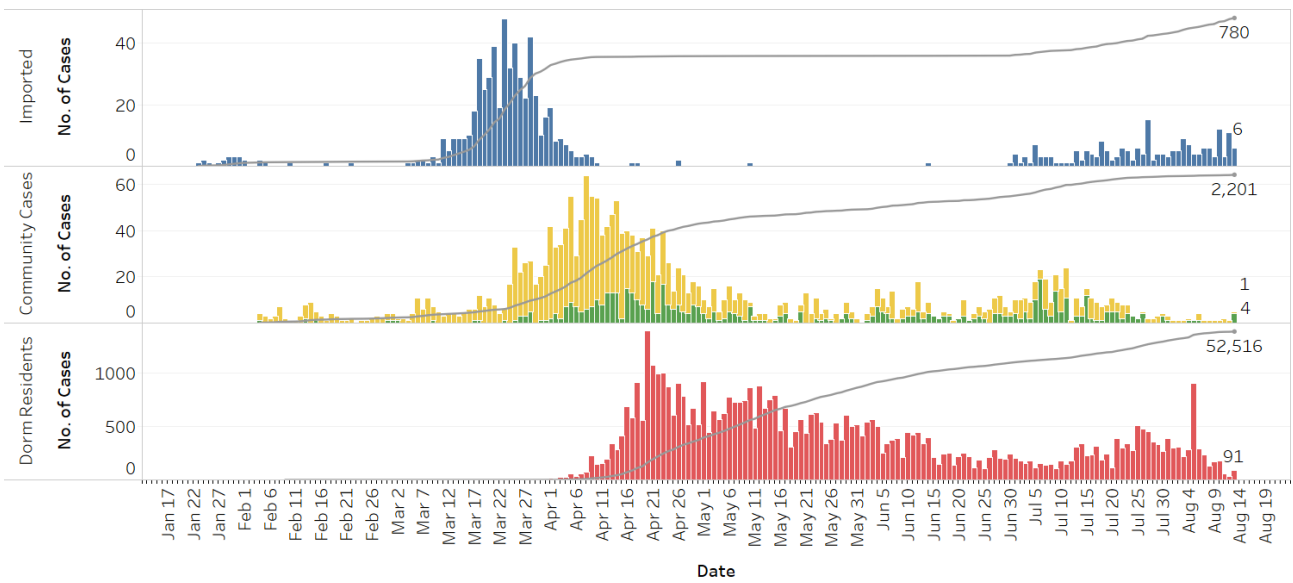
<sup>4</sup> Incidence rates are rounded to two significant figures.

<sup>5</sup> Includes Training Work Permit (TWP) holders.

**Figure 1.2:** Epidemic Curve of the COVID-19 Outbreak by Press Release Date



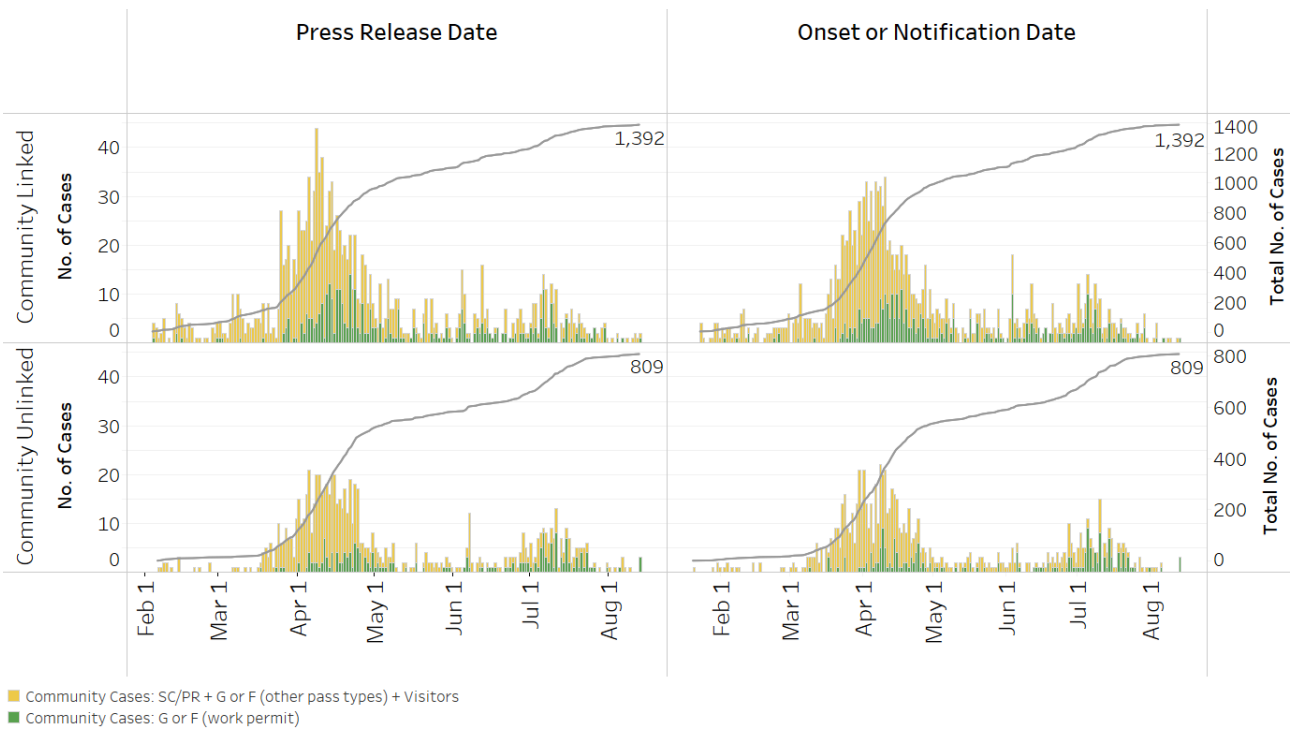
**Figure 1.3:** Epidemic Curve of the COVID-19 Outbreak by Press Release Date



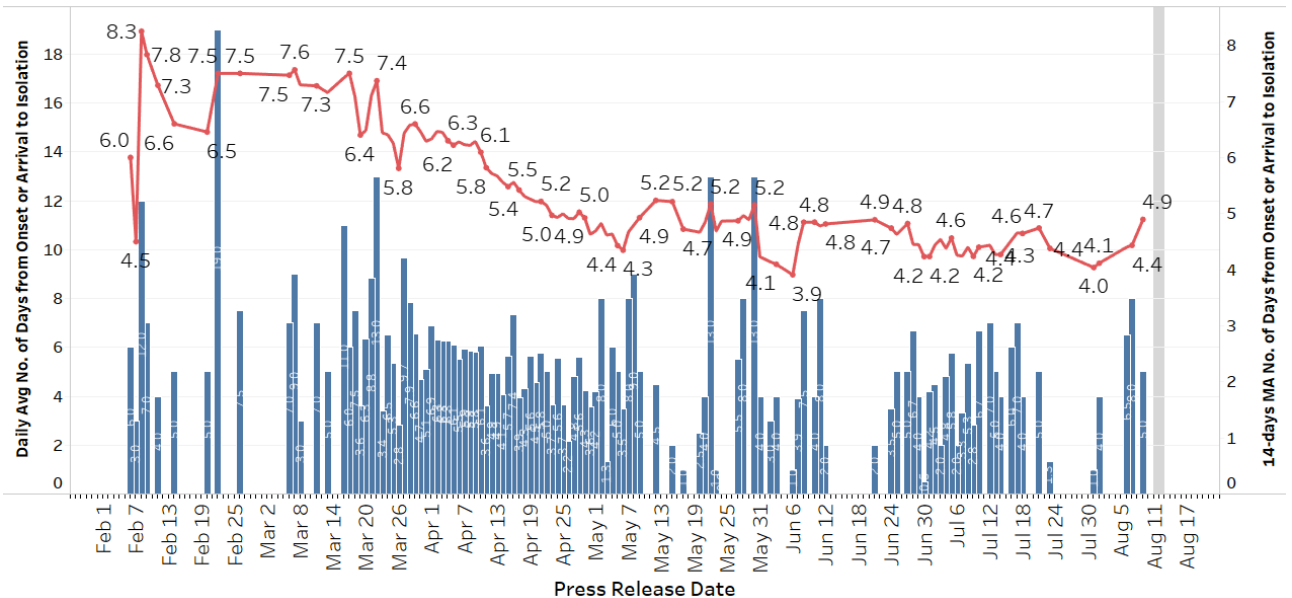
**COVID-19 Cases**

- Imported
- Community Cases: SC/PR + G or F (other pass types) + Visitors
- Community Cases: G or F (work permit)
- Dorm Residents

**Figure 1.4:** Epidemic Curve of Linked and Unlinked Cases among the Community by Press Release Date (left panel) and by Symptom Onset or Notification Date<sup>6</sup> (right panel)



**Figure 1.5:** Average Number of Days from Onset of Symptoms to Isolation (QO, MOH contact, notification or admission) for Community Unlinked Cases in Each Day<sup>7</sup>



Line represents the 14-day moving average; Bar represents the daily average<sup>8</sup>

<sup>6</sup> Date of notification was used for cases that did not display any symptoms. The numbers with onset in the past few days may see an increase as more cases are notified.

<sup>7</sup> Area in grey demarcates the data points for the past 3 days where some cases are still pending investigation. The bar chart shows the daily average number of days from onset date to isolation, while the line chart shows the moving average for the past 14 days. Both charts exclude cases with missing onset dates in the computation of the average.

<sup>8</sup> Asymptomatic community unlinked cases are not reflected in this chart. Community unlinked cases with symptoms who are isolated on the same day that symptoms occurred would have an isolation time of 0.

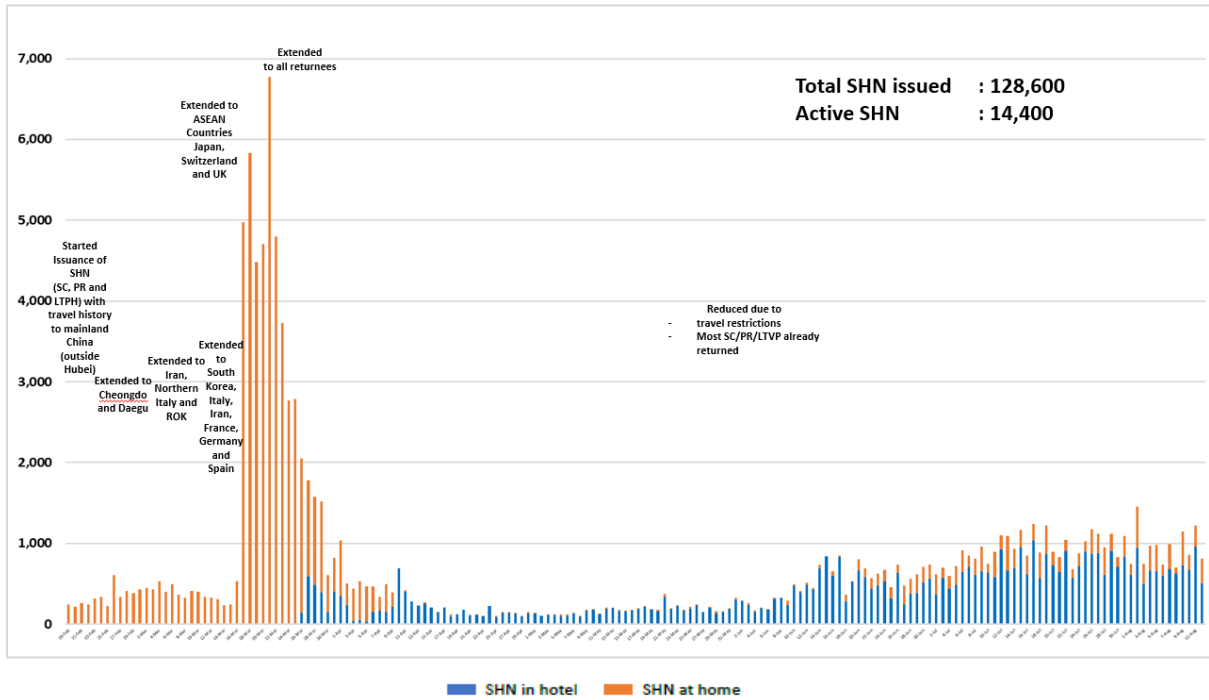
**(2) Number of COVID-19 Cases in Hospitals and Community Care Facilities****Figure 2.1:** Summary of Confirmed Cases by Status in the Past 14 Days

Press Release Date	Currently Admitted in Hospitals		In Care Facilities <sup>9</sup>	Total Recovered		Total Demised	Total
	ICU	General Wards		Completed Isolation	Discharged from Hospital		
31-Jul	0	136	5,551	44,436	2,055	27	52,205
1-Aug	0	117	5,628	44,677	2,063	27	52,512
2-Aug	0	109	5,763	44,852	2,074	27	52,825
3-Aug	1	114	5,730	45,096	2,083	27	53,051
4-Aug	1	124	5,740	45,364	2,090	27	53,346
5-Aug	1	125	6,333	45,668	2,100	27	54,254
6-Aug	0	112	6,385	45,925	2,106	27	54,555
7-Aug	0	124	6,334	46,196	2,116	27	54,797
8-Aug	0	145	6,174	46,457	2,126	27	54,929
9-Aug	0	135	6,027	46,778	2,137	27	55,104
10-Aug	0	112	5,544	47,453	2,156	27	55,292
11-Aug	0	104	5,094	47,960	2,168	27	55,353
12-Aug	0	92	4,756	48,341	2,179	27	55,395
13-Aug	0	91	4,643	48,552	2,184	27	55,497

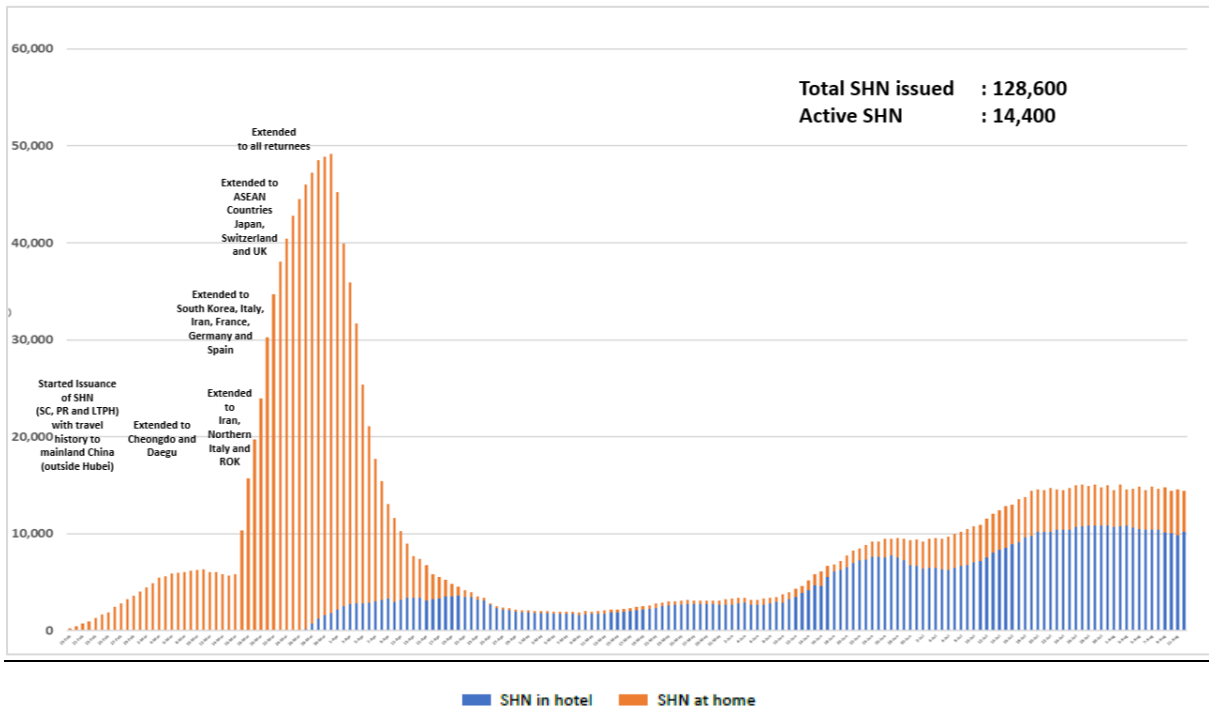
<sup>9</sup> Community Care Facilities (i.e. D'Resort, EXPO, Changi Exhibition Centre, Big Box), Private Hospitals (i.e. Concord International Hospital, Mt Elizabeth Hospital, Gleneagles Hospital, Mt Elizabeth Novena Hospital, Parkway East Hospital), Community Hospitals (i.e. Bright Vision Hospital, St. Andrew's Community Hospital, Jurong Community Hospital) and other care facilities.

**(3) Number of Stay-Home-Notice (SHN) Issued**

**Figure 3.1:** Daily Number of SHN issued

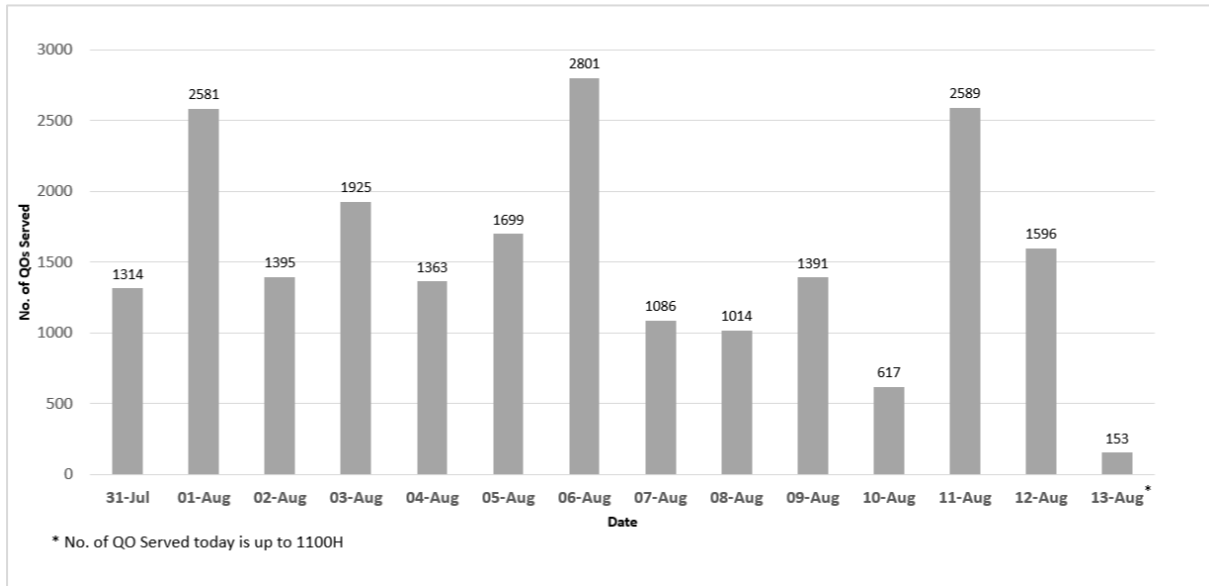


**Figure 3.2:** Active Stock Number of SHN (Home) and SHN (Hotel)



**(4) Number of Quarantine Order (QO) Issued**

**Figure 4.1:** Daily Number of QOs Issued



**Figure 4.2:** Active Number of Persons Under Quarantine (PUQs)

