

**8 October 2020 Daily Report on COVID-19****(1) Number of COVID-19 Cases****Figure 1.1:** Breakdown of New Confirmed Cases in the Past 14 Days

| Press Release Date            | Imported |                           |           | Non-Imported Cases                     |        |         |           |  |        |         |           |                             |   |  |  |              |   | All Cases |
|-------------------------------|----------|---------------------------|-----------|--|--------|---------|-----------|--|--------|---------|-----------|-----------------------------|---|--|--|--------------|---|-----------|
|                               |          |                           |           | Community Cases                        |        |         |           |  |        |         |           | Dorm Residents <sup>1</sup> |   |  |  |              |   |           |
|                               | Isolated | Not Isolated <sup>2</sup> | Sub-Total | Isolated before Detection <sup>3</sup> |        |         |           | Detected through Surveillance <sup>4</sup> |        |         |           | Sub-Total                   | Incidence Rate <sup>5</sup> (per 100,000) | Isolated before Detection <sup>3</sup> | Detected through Surveillance <sup>4</sup> | No. of Cases | Incidence Rate <sup>5</sup> (per 100,000) |           |
|                               |          |                           |           | SC/PR                                  | G or F | Visitor | Sub-Total | SC/PR                                      | G or F | Visitor | Sub-Total |                             |   |  |  |              |   |           |
| Before 25-Sep                 | 762      | 272                       | 1,034     | 363                                    | 259    | 1       | 623       | 987  | 625    | 9       | 1,621     | 2,244                       | -   | 54,376                                 |  | 54,376       | -   | 57,654    |
| 25-Sep                        | 2        | 0                         | 2         | 0                                      | 0      | 0       | 0         | 0  | 0      | 0       | 0         | 0                           | 0   | 7                                      | 2  | 9            | 2.8                                       | 11        |
| 26-Sep                        | 5        | 0                         | 5         | 0                                      | 0      | 0       | 0         | 0  | 1      | 0       | 1         | 1                           | 0.019                                     | 7                                      | 7  | 14           | 4.3                                       | 20        |
| 27-Sep                        | 5        | 0                         | 5         | 0                                      | 0      | 0       | 0         | 0  | 0      | 0       | 0         | 0                           | 0   | 6                                      | 4  | 10           | 3.1                                       | 15        |
| 28-Sep                        | 6        | 0                         | 6         | 0                                      | 0      | 0       | 0         | 0  | 2      | 0       | 2         | 2                           | 0.037                                     | 4                                      | 3  | 7            | 2.2                                       | 15        |
| 29-Sep                        | 9        | 0                         | 9         | 0                                      | 1      | 0       | 1         | 0  | 0      | 0       | 0         | 1                           | 0.019                                     | 8                                      | 9  | 17           | 5.3                                       | 27        |
| 30-Sep                        | 4        | 0                         | 4         | 0                                      | 1      | 0       | 1         | 0  | 2      | 0       | 2         | 3                           | 0.056                                     | 10                                     | 6  | 16           | 5.0                                       | 23        |
| 1-Oct                         | 15       | 0                         | 15        | 1                                      | 0      | 0       | 1         | 0  | 0      | 0       | 0         | 1                           | 0.019                                     | 1                                      | 2  | 3            | 0.93                                      | 19        |
| 2-Oct                         | 5        | 0                         | 5         | 0                                      | 0      | 0       | 0         | 0  | 1      | 0       | 1         | 1                           | 0.019                                     | 1                                      | 3  | 4            | 1.2                                       | 10        |
| 3-Oct                         | 4        | 0                         | 4         | 0                                      | 0      | 0       | 0         | 1  | 0      | 0       | 1         | 1                           | 0.019                                     | 1                                      | 0  | 1            | 0.31                                      | 6         |
| 4-Oct                         | 6        | 0                         | 6         | 0                                      | 0      | 0       | 0         | 0  | 2      | 0       | 2         | 2                           | 0.037                                     | 0                                      | 4  | 4            | 1.2                                       | 12        |
| 5-Oct                         | 1        | 0                         | 1         | 0                                      | 1      | 0       | 1         | 0  | 0      | 0       | 0         | 1                           | 0.019                                     | 5                                      | 0  | 5            | 1.5                                       | 7         |
| 6-Oct                         | 4        | 0                         | 4         | 0                                      | 2      | 0       | 2         | 0  | 0      | 0       | 0         | 2                           | 0.037                                     | 1                                      | 4  | 5            | 1.5                                       | 11        |
| 7-Oct                         | 6        | 0                         | 6         | 0                                      | 0      | 0       | 0         | 0  | 0      | 0       | 0         | 0                           | 0   | 1                                      | 3  | 4            | 1.2                                       | 10        |
| 8-Oct                         | 5        | 0                         | 5         | 0                                      | 0      | 0       | 0         | 0  | 0      | 0       | 0         | 0                           | 0   | 1                                      | 3  | 4            | 1.2                                       | 9         |
| Total since start of outbreak | 839      | 272                       | 1,111     | 364                                    | 264    | 1       | 629       | 988  | 633    | 9       | 1,630     | 2,259                       | -   | 54,479                                 |  | 54,479       | -   | 57,849    |
| Population at risk            |          |                           |           |  |        |         |           |  |        |         |           | 5,381,000                   |   |  |  | 323,000      |   | 5,704,000 |
| Prevalence                    |          |                           |           |  |        |         |           |  |        |         |           | 0.04%                       |   |  |  | 16.87%       |   | 1.01%     |

**Notes**

<sup>1</sup> Includes PRs and visitors residing in dorms. Breakdown of dorm cases into those detected through surveillance and those isolated before detection is not available before 24 Aug.

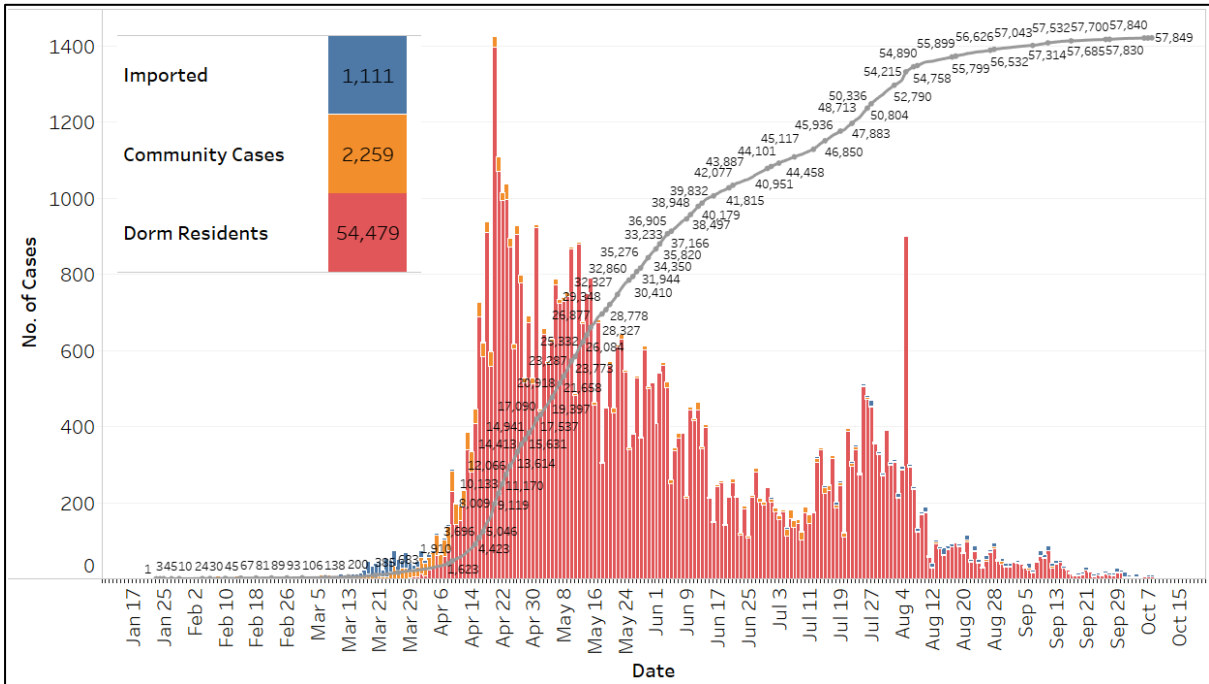
<sup>2</sup> All of these cases were reported before early Apr, and constitute the first wave of imported cases.

<sup>3</sup> Cases who were already quarantined and tested during quarantine to determine their status.

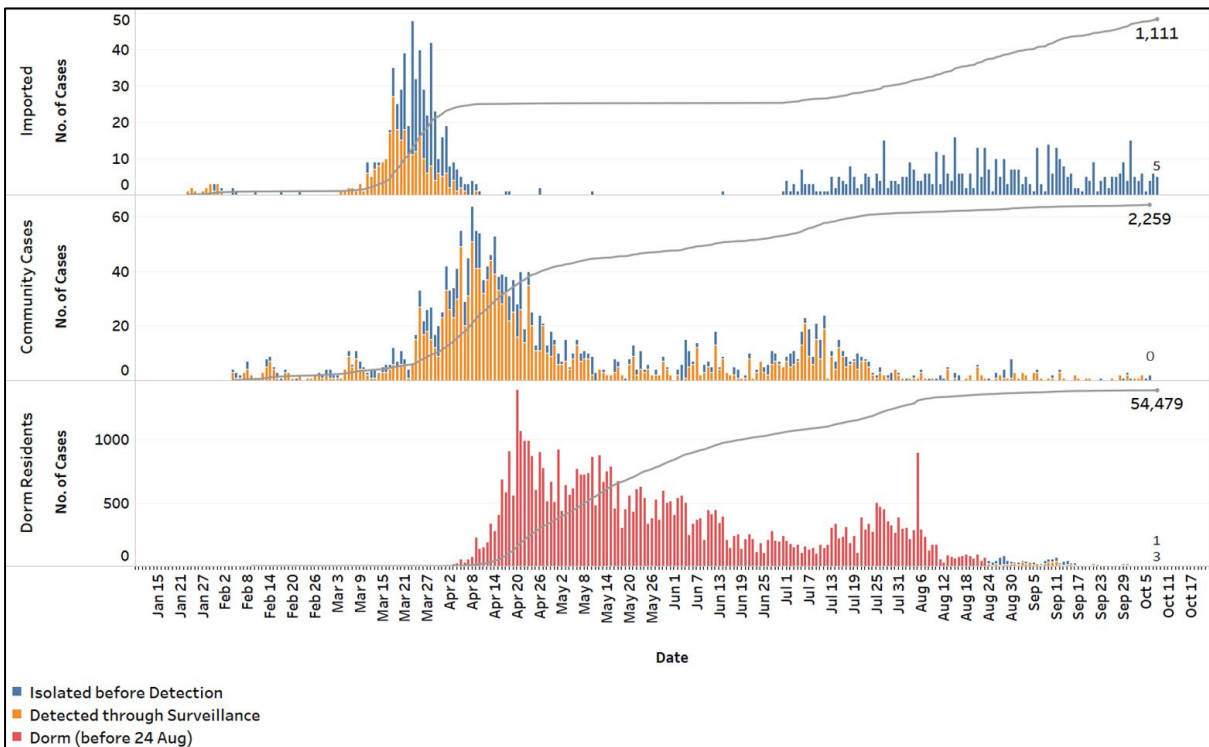
<sup>4</sup> Cases who were identified through surveillance testing, such as the bi-weekly Rostered Routine Testing (RRT) of at-risk workers and testing of those with Acute Respiratory Illness (ARI) symptoms.

<sup>5</sup> Incidence rates are rounded to two significant figures.

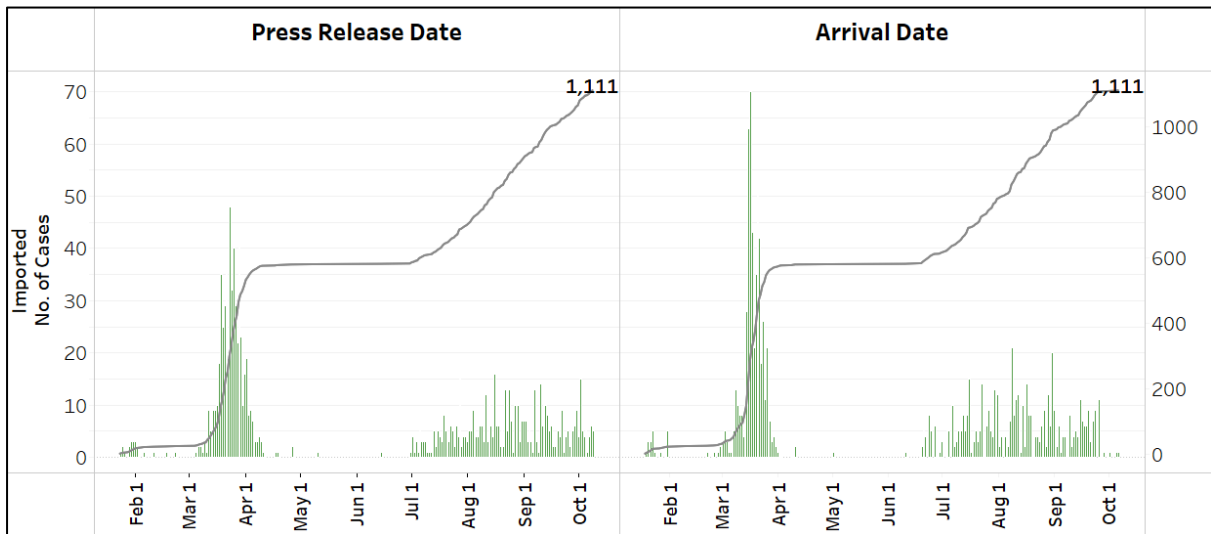
**Figure 1.2:** Epidemic Curve of the COVID-19 Outbreak by Press Release Date



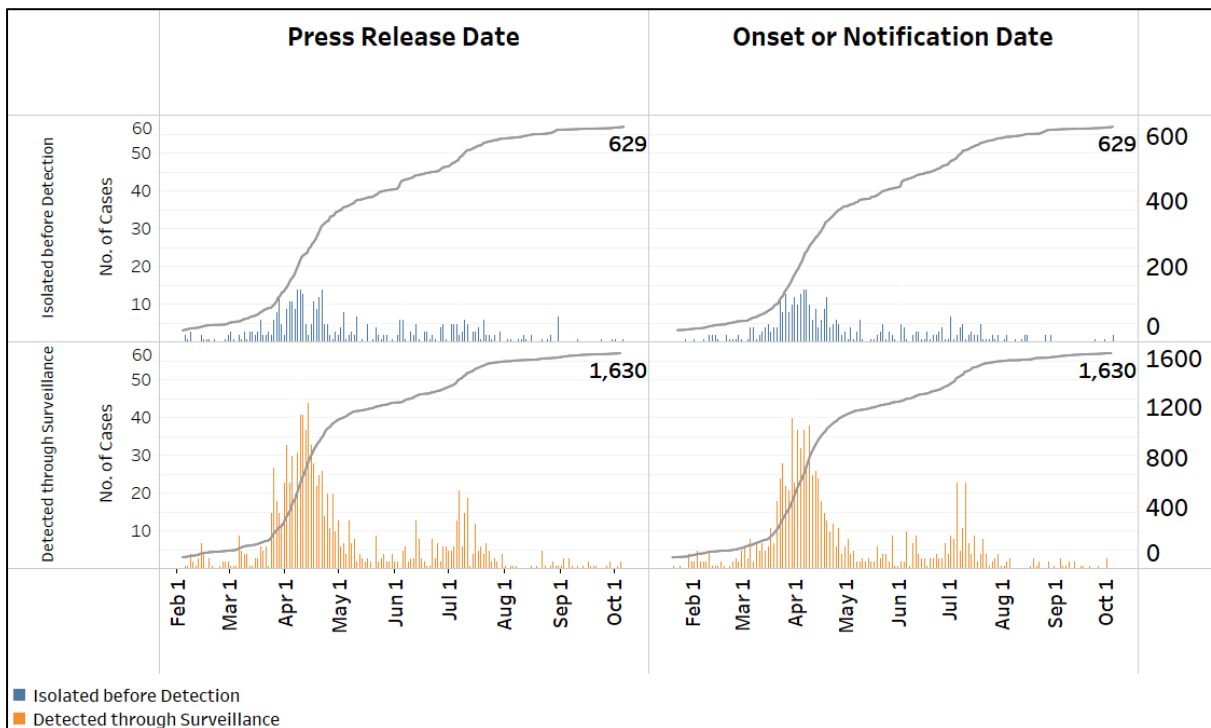
**Figure 1.3:** Epidemic Split Curve of the COVID-19 Outbreak by Press Release Date



**Figure 1.4:** Epidemic Curve of Imported Cases by Press Release Date (left panel) and Arrival Date (right panel)

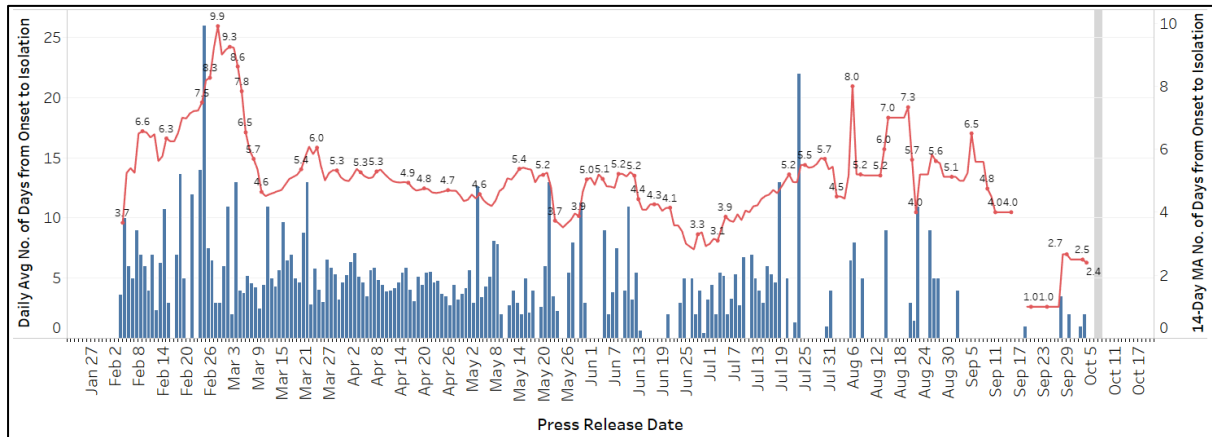


**Figure 1.5:** Epidemic Curve of Community Cases by Press Release Date (left panel) and by Symptom Onset or Notification Date<sup>1</sup> (right panel)



<sup>1</sup> Date of notification was used for cases that did not display any symptoms. The numbers with onset in the past few days may see an increase as more cases are notified.

**Figure 1.6:** Average Number of Days from Onset of Symptoms to Isolation (QO, hospital admission or notification to MOH) for Community Cases Detected through Surveillance in Each Day



*Line represents the 14-day moving average; Bar represents the daily average<sup>2</sup>*

<sup>2</sup> Area in grey demarcates data points for the past 3 days where some cases may still be pending epidemiological investigation. The bar graph shows the daily average number of days from symptoms onset to isolation, while the line graph shows the moving average for the past 14 days. Both graphs exclude cases with no onset date (asymptomatic) in the computation of the average. Community cases with symptoms who are isolated on the same day that symptoms occurred would have an isolation time of 0. There is a gap in the line graph from 16 to 18 Sep as there are no symptomatic cases in the preceding 14 days.

## (2) Number of COVID-19 Cases in Hospitals and Community Care Facilities

**Figure 2.1:** Summary of Confirmed Cases by Status in the Past 14 Days

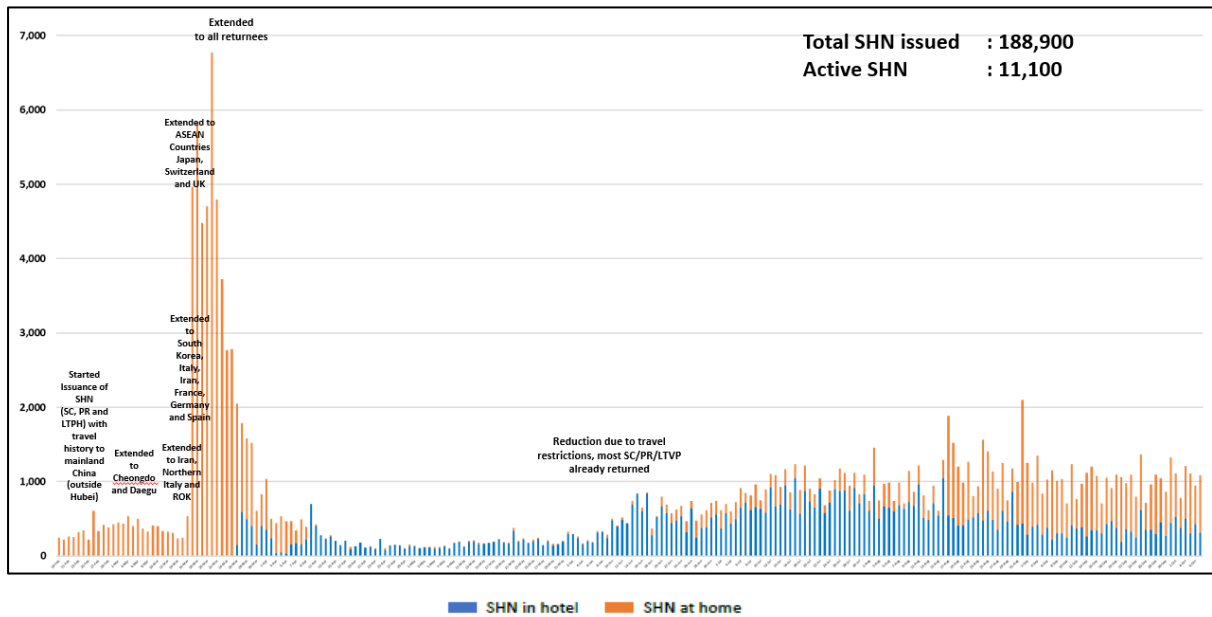
| Press Release Date | Currently Admitted in Hospitals |                 | In Care Facilities <sup>3</sup> | Total Recovered     |                          | Total Demised | Total  |
|--------------------|---------------------------------|-----------------|---------------------------------|---------------------|--------------------------|---------------|--------|
|                    | ICU                             | General Wards   |                                 | Completed Isolation | Discharged from Hospital |               |        |
| 25-Sep             | 0                               | 30 <sup>+</sup> | 268                             | 54,893              | 2,447 <sup>+</sup>       | 27            | 57,665 |
| 26-Sep             | 0                               | 25              | 274                             | 54,910              | 2,449                    | 27            | 57,685 |
| 27-Sep             | 0                               | 31              | 275                             | 54,918              | 2,449                    | 27            | 57,700 |
| 28-Sep             | 0                               | 36              | 259                             | 54,941              | 2,452                    | 27            | 57,715 |
| 29-Sep             | 0                               | 32              | 217                             | 55,008              | 2,458                    | 27            | 57,742 |
| 30-Sep             | 0                               | 41              | 209                             | 55,029              | 2,459                    | 27            | 57,765 |
| 1-Oct              | 0                               | 44              | 201                             | 55,049              | 2,463                    | 27            | 57,784 |
| 2-Oct              | 0                               | 48              | 185                             | 55,068              | 2,466                    | 27            | 57,794 |
| 3-Oct              | 0                               | 46              | 165                             | 55,085              | 2,477                    | 27            | 57,800 |
| 4-Oct              | 0                               | 43              | 167                             | 55,095              | 2,480                    | 27            | 57,812 |
| 5-Oct              | 0                               | 42              | 153                             | 55,112              | 2,485                    | 27            | 57,819 |
| 6-Oct              | 1                               | 42              | 148                             | 55,125              | 2,487                    | 27            | 57,830 |
| 7-Oct              | 1                               | 38              | 150                             | 55,133              | 2,491                    | 27            | 57,840 |
| 8-Oct              | 1                               | 34              | 119                             | 55,171              | 2,497                    | 27            | 57,849 |

*+ Case 57694 was reclassified from Discharged from Hospital to Admitted in GW*

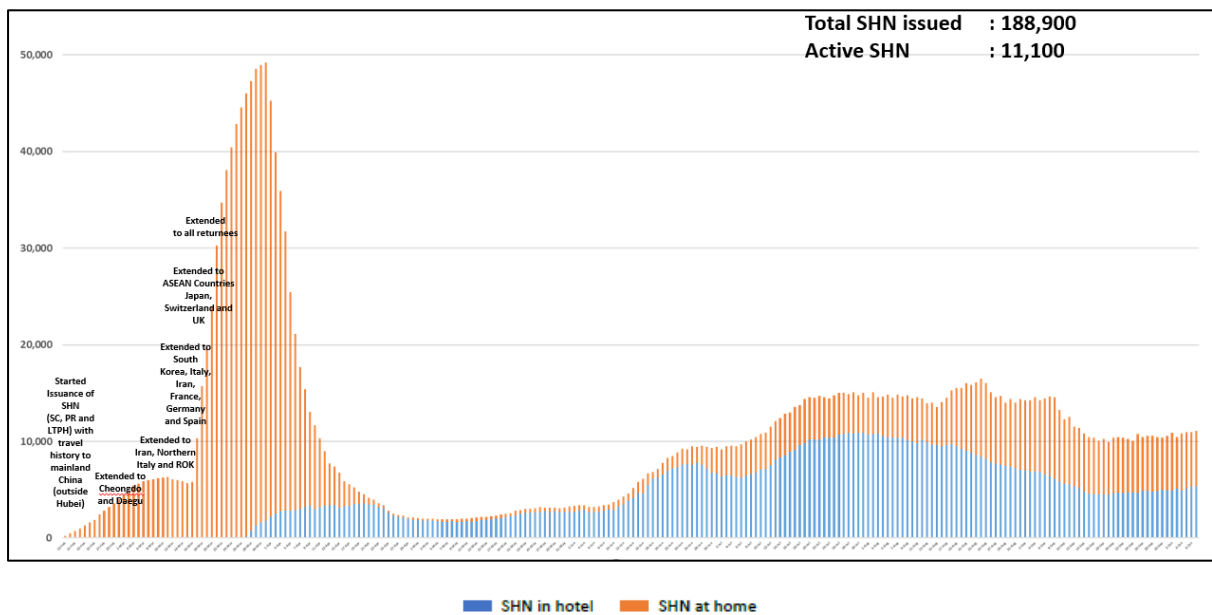
<sup>3</sup> Community Care Facilities (i.e. D'Resort, EXPO, Big Box), Private Hospitals (i.e. Concord International Hospital, Mt Elizabeth Hospital, Gleneagles Hospital, Mt Elizabeth Novena Hospital, Parkway East Hospital), Community Hospitals (i.e. Bright Vision Hospital) and other care facilities.

### (3) Number of Stay-Home-Notice (SHN) Issued

**Figure 3.1:** Daily Number of SHN issued

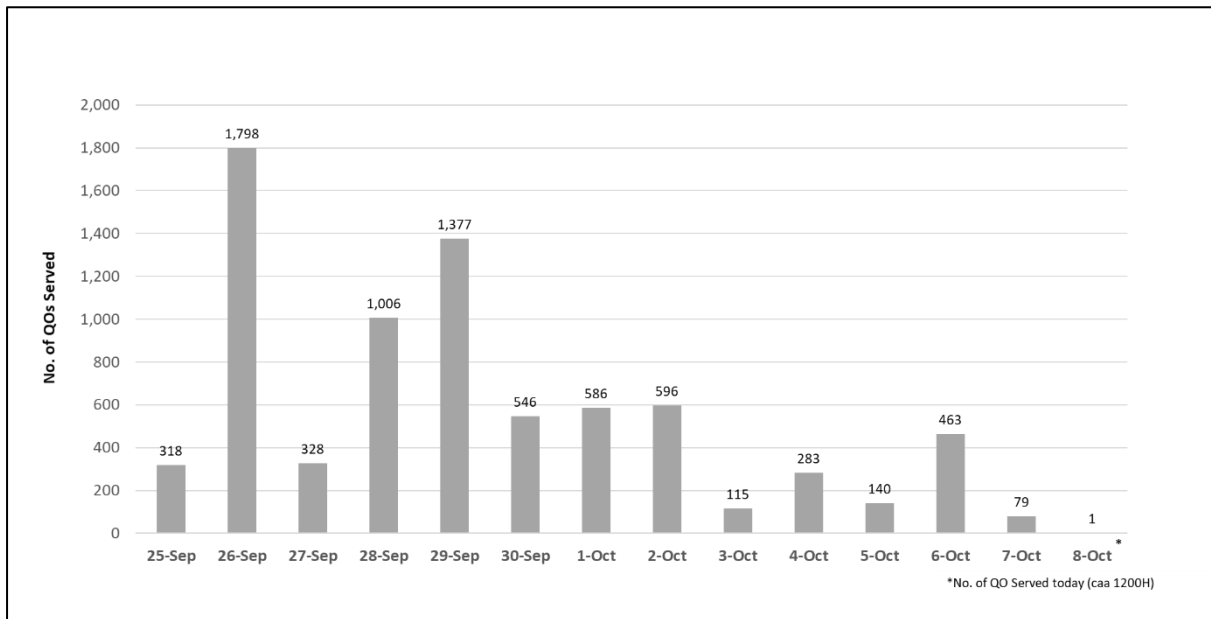


**Figure 3.2:** Active Stock Number of SHN (Home) and SHN (Hotel)



#### (4) Number of Quarantine Order (QO) Issued

**Figure 4.1:** Daily Number of QOs Issued



**Figure 4.2:** Active Number of Persons Under Quarantine (PUQs)

