

3 December 2020 Daily Report on COVID-19

(1) Number of COVID-19 Cases

Figure 1.1: Breakdown of New Confirmed Cases in the Past 14 Days

Press Release Date	Imported*			Non-Imported Cases														All Cases	
				Community Cases*								Dorm Residents ¹							
	Isolated before Detection	Detected through Surveillance ²	Sub-Total	Isolated before Detection ³				Detected through Surveillance ⁴				Sub-Total	Incidence Rate ⁵ (per 100,000)	Isolated before Detection ³	Detected through Surveillance ⁴	No. of Cases	Incidence Rate ⁵ (per 100,000)		
				SC/PR	G or F	Visitor	Sub-Total	SC/PR	G or F	Visitor	Sub-Total								
Before 20-Nov	1,093	275	1,368	367	265	1	633	990	636	10	1,636	2,269	-	54,502		54,502	-	58,139	
20-Nov	4	0	4	0	0	0	0	0	0	0	0	0	0	0	0	0	0	0	4
21-Nov	5	0	5	0	0	0	0	0	0	0	0	0	0	0	0	0	0	0	5
22-Nov	12	0	12	0	0	0	0	0	0	0	0	0	0	0	0	0	0	0	12
23-Nov	5	0	5	0	0	0	0	0	0	0	0	0	0	0	0	0	0	0	5
24-Nov	18	0	18	0	0	0	0	0	0	0	0	0	0	0	0	0	0	0	18
25-Nov	7	0	7	0	0	0	0	0	0	0	0	0	0	0	0	0	0	0	7
26-Nov	4	0	4	0	0	0	0	1	0	0	1	1	0.019	0	0	0	0	0	5
27-Nov	4	0	4	0	0	0	0	0	0	0	0	0	0	0	0	0	0	0	4
28-Nov	5	0	5	0	0	0	0	1	0	0	1	1	0.019	0	0	0	0	0	6
29-Nov	7	0	7	0	0	0	0	0	1	0	1	1	0.019	0	0	0	0	0	8
30-Nov	4	0	4	0	0	0	0	0	0	1	1	1	0.019	0	0	0	0	0	5
1-Dec	8	0	8	0	0	0	0	1	0	0	1	1	0.019	0	1	1	0.31	10	
2-Dec	2	0	2	0	0	0	0	0	0	0	0	0	0	0	0	0	0	0	2
3-Dec	8	0	8	0	0	0	0	0	0	0	0	0	0	0	1	1	0.31	9	
Total since start of outbreak	1,186	275	1,461	367	265	1	633	993	637	11	1,641	2,274	-	54,504		54,504	-	58,239	
Population at risk												5,381,000				323,000		5,704,000	
Prevalence												0.04%				16.87%		1.02%	

Notes

¹ Includes PRs and visitors residing in dorms. Breakdown of dorm cases into those detected through surveillance and those isolated before detection is not available before 24 Aug.

² 272 cases were reported before early Apr, and constitute the 1st wave of imported cases. 1 case in Oct tested negative during his 14-day SHN and was subsequently identified as a positive case through a pre-departure swab test.

³ Cases who were already quarantined and tested during quarantine to determine their status.

⁴ Cases who were identified through surveillance testing, such as the bi-weekly Rostered Routine Testing (RRT) of at-risk workers and testing of those with Acute Respiratory Illness (ARI) symptoms.

⁵ Incidence rates are rounded to two significant figures.

*Two community cases were reclassified to imported cases after further epidemiological investigations.

Figure 1.2: Epidemic Curve of the COVID-19 Outbreak by Press Release Date

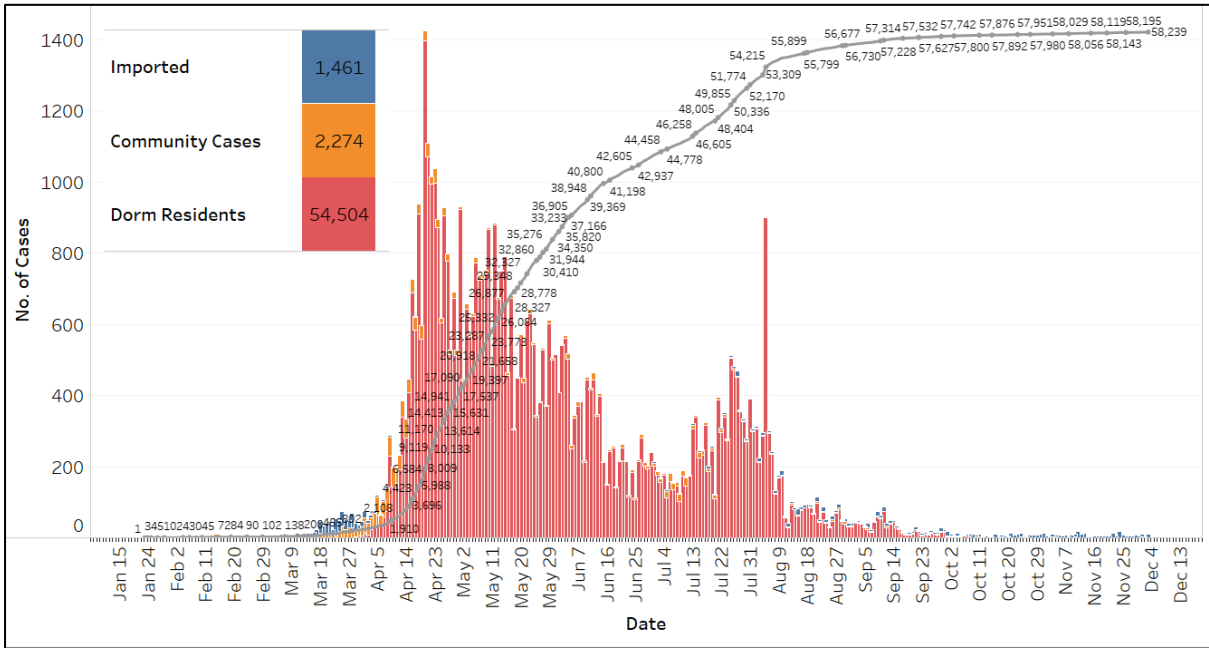


Figure 1.3: Epidemic Split Curve of the COVID-19 Outbreak by Press Release Date

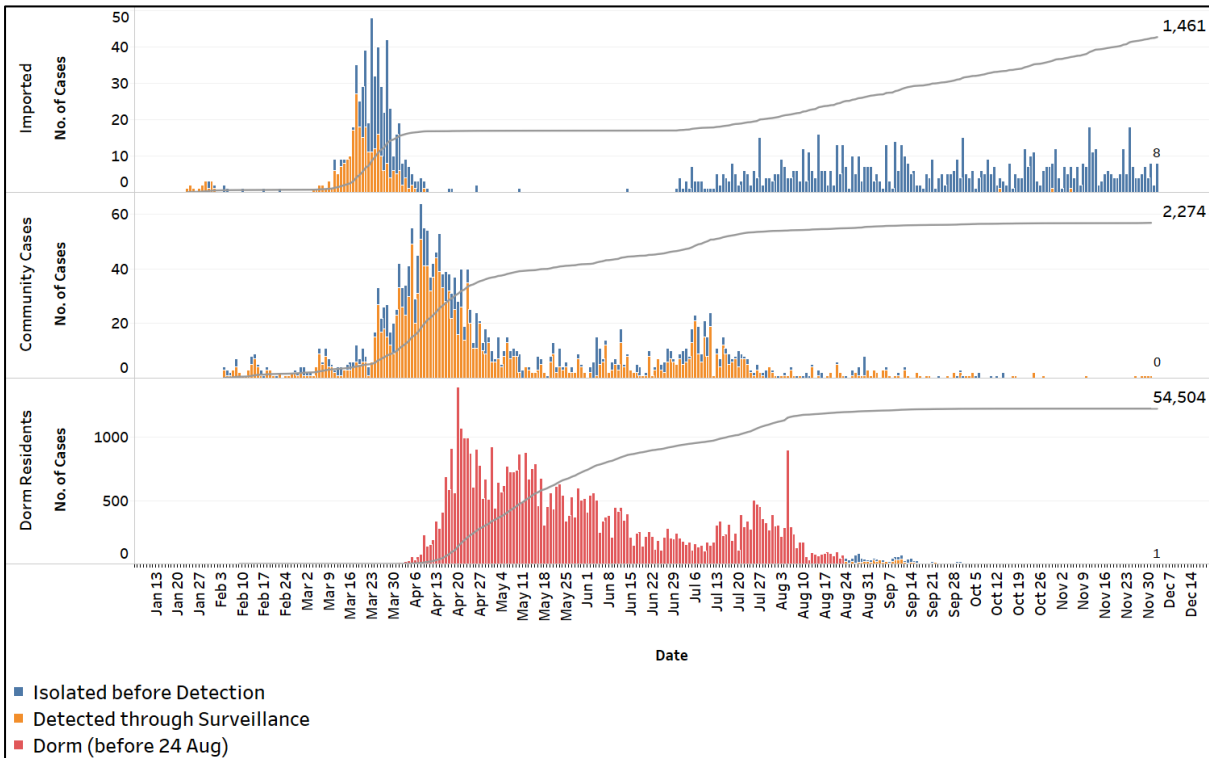


Figure 1.4: Epidemic Curve of Imported Cases by Press Release Date (left panel) and Arrival Date (right panel)

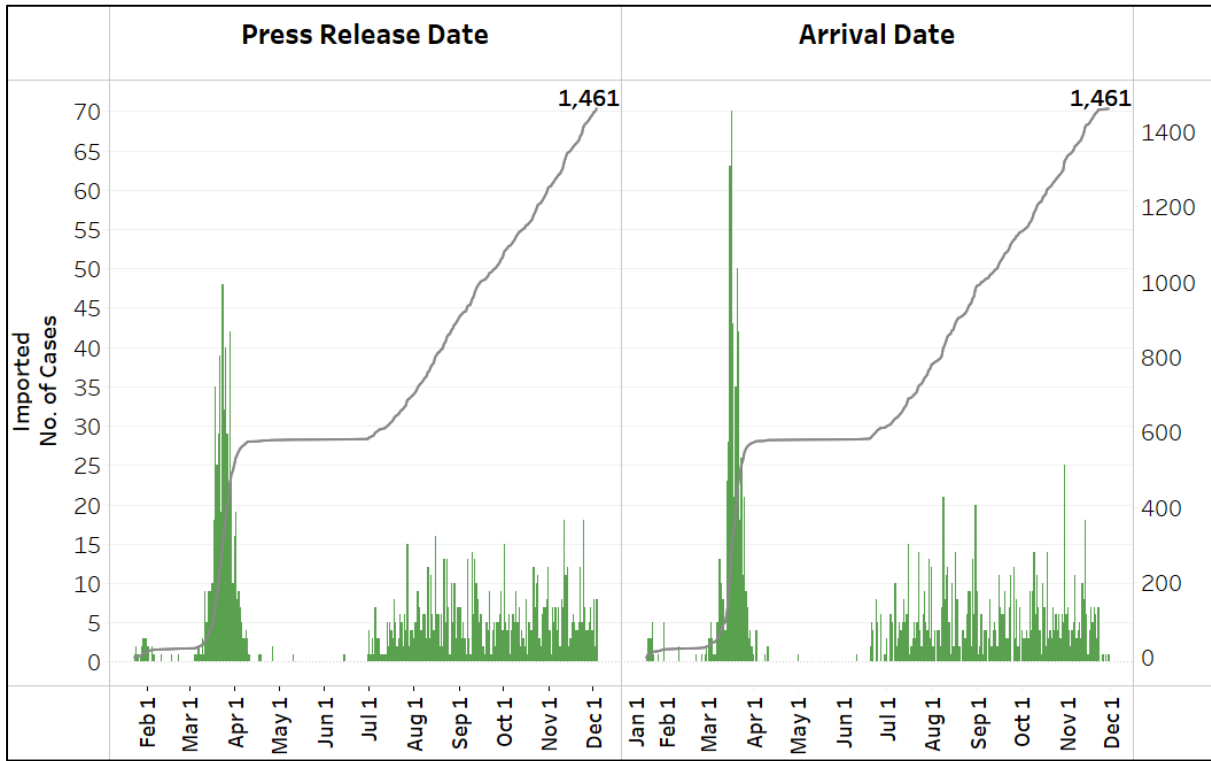
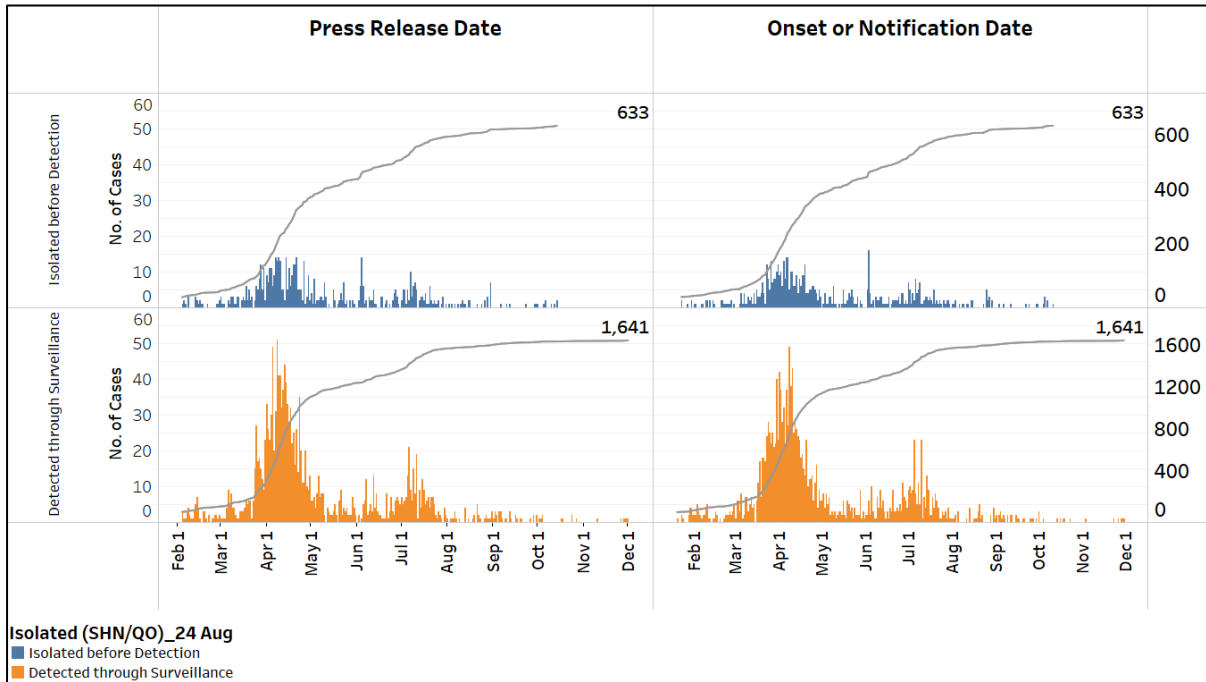
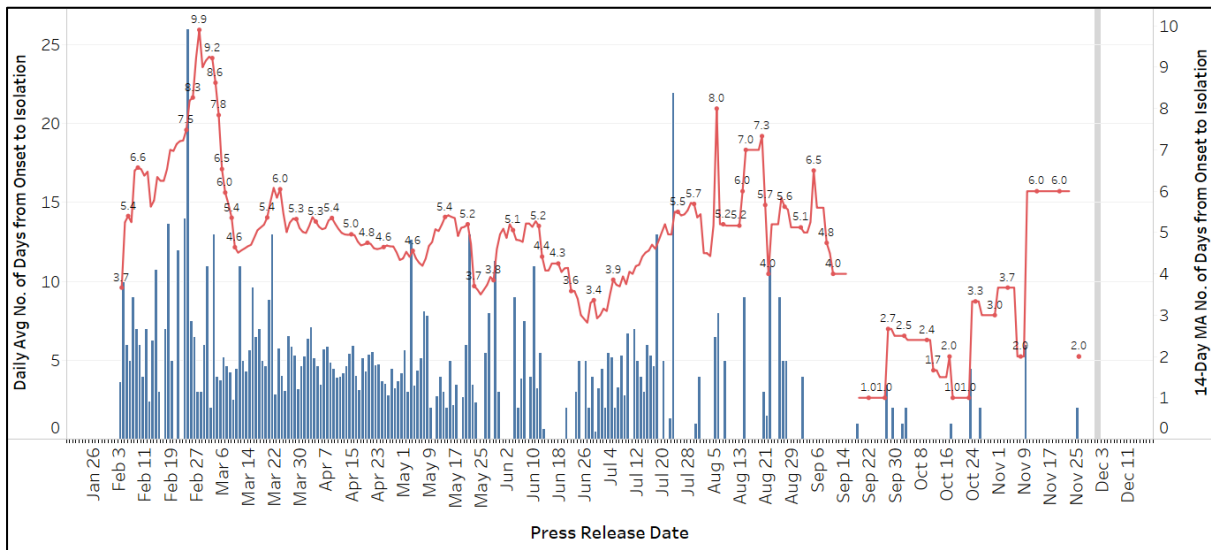


Figure 1.5: Epidemic Curve of Community Cases by Press Release Date (left panel) and by Symptom Onset or Notification Date¹ (right panel)



¹ Date of notification was used for cases that did not display any symptoms. The numbers with onset in the past few days may see an increase as more cases are notified.

Figure 1.6: Average Number of Days from Onset of Symptoms to Isolation (QO, hospital admission or notification to MOH) for Community Cases Detected through Surveillance in Each Day



Line represents the 14-day moving average; Bar represents the daily average²

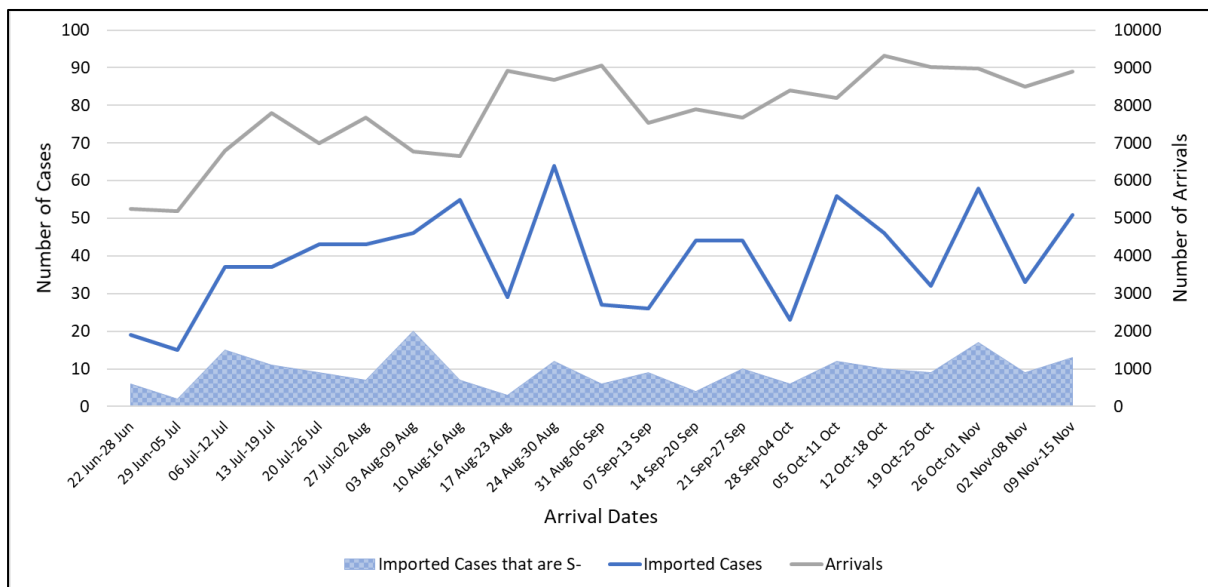
² Area in grey demarcates data points for the past 3 days where some cases may still be pending epidemiological investigation. The bar graph shows the daily average number of days from symptoms onset to isolation, while the line graph shows the moving average for the past 14 days. Both graphs exclude cases with no onset date (asymptomatic) in the computation of the average. Community cases with symptoms who are isolated on the same day that symptoms occurred would have an isolation time of 0. There is a gap in the line graph from 16 to 18 Sep as there are no symptomatic cases in the preceding 14 days.

(2) Imported COVID-19 Cases

Figure 2.1: Serology and Symptom Status of Imported Cases Reported from 20 to 26 Nov

Symptoms	S+	S-	Not Serology Tested	Pending Serology Result	Total No. of Cases
Asymptomatic	34	14	0	2	50
Symptomatic	1	4	0	0	5
Total	35	18	0	2	55

Figure 2.2: Weekly Total Number of Imported Cases, Imported Cases that are S- and Arrivals from 22 Jun to 15 Nov³ (next update will be on 7 Dec)



³ Data from the past 2 weeks are excluded as cases on SHN who arrived in the past 2 weeks may not have their test results yet. "Imported Cases that are S-" comprises imported cases who are (a) serology negative; or (b) not tested for serology.

(3) Number of COVID-19 Cases in Hospitals and Community Care Facilities

Figure 3.1: Summary of Confirmed Cases by Status in the Past 14 Days

Press Release Date	Currently Admitted in Hospitals		In Care Facilities ⁴	Total Recovered		Total Demised	Total
	ICU	General Wards		Completed Isolation	Discharged from Hospital		
20-Nov	1	25	31	55,381	2,677	28	58,143
21-Nov	1	21	34	55,384	2,680	28	58,148
22-Nov	1	25	39	55,387	2,680	28	58,160
23-Nov	1	35	30	55,389	2,682	28	58,165
24-Nov	1	36	39	55,394	2,685	28	58,183
25-Nov	1	41	29	55,399	2,692	28	58,190
26-Nov	1	42	20	55,407	2,697	28	58,195
27-Nov	1	30	29	55,407	2,704	28	58,199
28-Nov	0	32	25	55,409	2,710	29	58,205
29-Nov	0	31	29	55,410	2,714	29	58,213
30-Nov	0	29	26	55,417	2,717	29	58,218
1-Dec	0	29	31	55,421	2,718	29	58,228
2-Dec	0	28	29	55,424	2,720	29	58,230
3-Dec	0	26	39	55,424	2,721	29	58,239

⁴ Community Care Facilities (i.e. D'Resort, EXPO, Tuas South), Private Hospitals (i.e. Concord International Hospital, Mt Elizabeth Hospital, Gleneagles Hospital, Mt Elizabeth Novena Hospital, Parkway East Hospital), Community Hospitals (i.e. Bright Vision Hospital) and other care facilities.

(4) Number of Stay-Home-Notice (SHN) Issued

Figure 4.1: Daily Number of SHN issued (19 Feb to 2 Dec 2020)

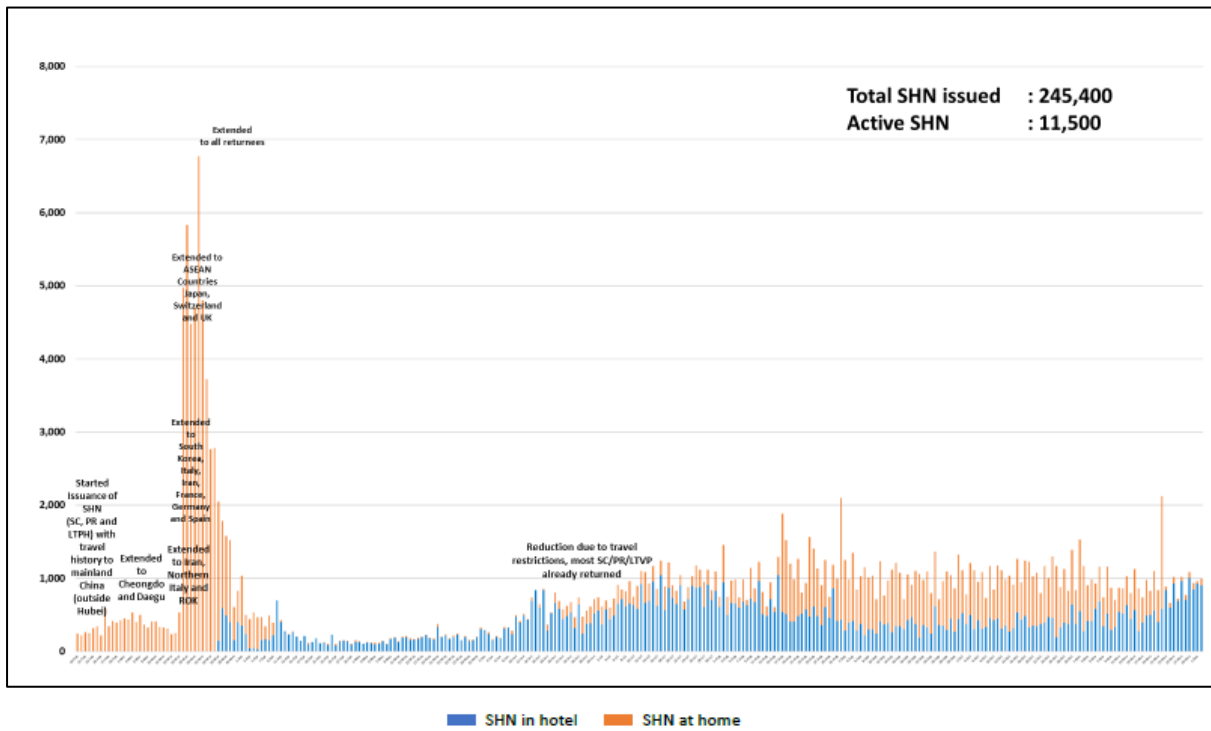
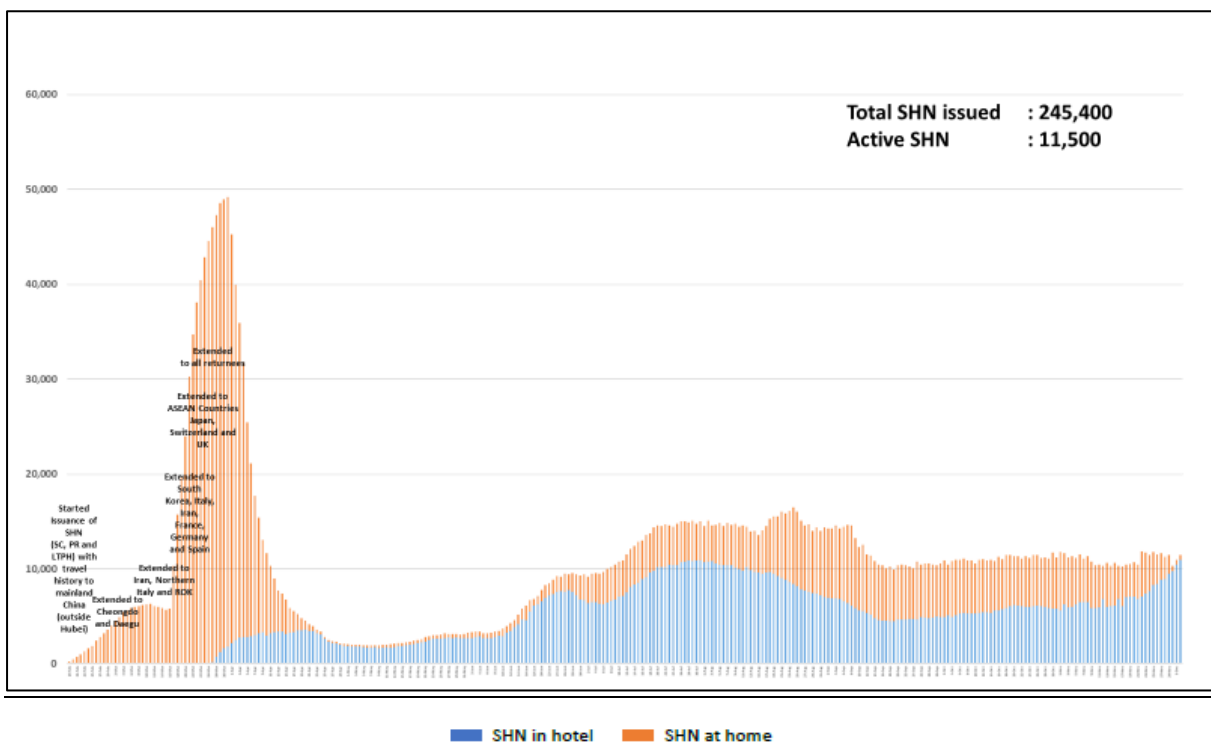


Figure 4.2: Active Stock Number of SHN (Home) and SHN (Hotel) (19 Feb to 2 Dec 2020)



(5) Number of Quarantine Orders (QO) Issued

Figure 5.1: Daily Number of QOs Issued

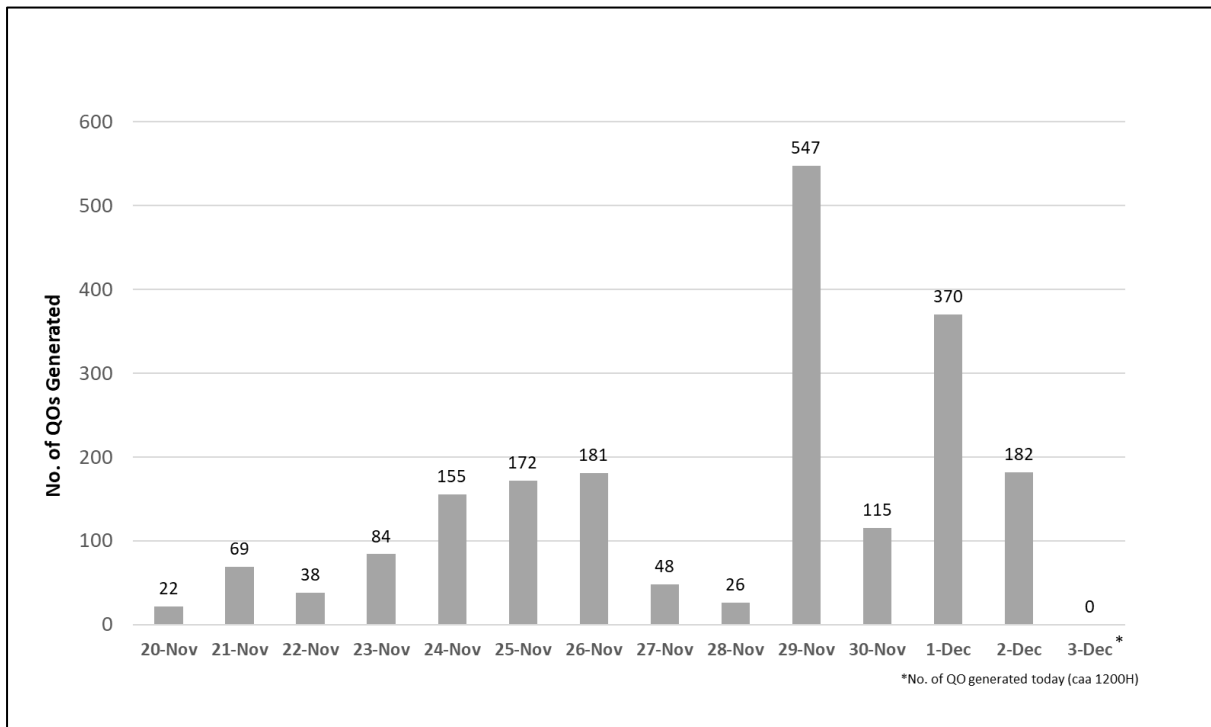


Figure 5.2: Active Number of Persons Under Quarantine (PUQs)

