

07 January 2021 Daily Report on COVID-19**(1) Number of COVID-19 Cases****Figure 1.1:** Breakdown of New Confirmed Cases in the Past 14 Days

Press Release Date	Imported			Non-Imported Cases														All Cases	
				Community Cases								Dorm Residents ¹							
	Isolated before Detection	Detected through Surveillance ²	Sub-Total	Isolated before Detection ³				Detected through Surveillance ⁴				Sub-Total	Incidence Rate ⁵ (per 100,000)	Isolated before Detection ³	Detected through Surveillance ⁴	No. of Cases	Incidence Rate ⁵ (per 100,000)		
				SC/PR	G or F	Visitor	Sub-Total	SC/PR	G or F	Visitor	Sub-Total								
Before 25-Dec	1,438	275	1,713	367	265	2	634	994	637	11	1,642	2,276	-	54,506		54,506	-	58,495	
25-Dec	13	1	14	0	0	0	0	0	0	0	0	0	0	0	0	0	0	0	14
26-Dec	10	0	10	0	0	0	0	0	0	0	0	0	0	0	0	0	0	0	10
27-Dec	5	0	5	0	0	0	0	0	0	0	0	0	0	0	0	0	0	0	5
28-Dec	4	0	4	0	0	0	0	1	0	0	1	1	0.019	0	0	0	0	0	5
29-Dec	13	0	13	0	0	0	0	0	0	0	0	0	0	0	0	0	0	0	13
30-Dec	24	2	26	0	0	0	0	1	0	0	1	1	0.019	0	0	0	0	0	27
31-Dec	25	0	25	4	0	0	4	1	0	0	1	5	0.093	0	0	0	0	0	30
1-Jan	27	0	27	2	0	0	2	0	1	0	1	3	0.056	0	0	0	0	0	30
2-Jan	33	0	33	0	0	0	0	0	0	0	0	0	0	0	0	0	0	0	33
3-Jan	35	0	35	0	0	0	0	0	0	0	0	0	0	0	0	0	0	0	35
4-Jan	24	0	24	0	0	0	0	0	0	0	0	0	0	0	0	0	0	0	24
5-Jan	26	0	26	1	0	0	1	0	0	1	1	2	0.037	0	0	0	0	0	28
6-Jan	29	0	29	0	0	0	0	0	2	0	2	2	0.037	0	0	0	0	0	31
7-Jan	31	0	31	0	0	0	0	1	1	0	2	2	0.037	0	0	0	0	0	33
Total since start of outbreak	1,737	278	2,015	374	265	2	641	998	641	12	1,651	2,292	-	54,506		54,506	-	58,813	
Population at risk												5,381,000				323,000		5,704,000	
Prevalence												0.04%				16.87%		1.03%	

Notes

¹ Includes PRs and visitors residing in dorms. Breakdown of dorm cases into those detected through surveillance and those isolated before detection is not available before 24 Aug.

² 272 cases were reported before early Apr, and constitute the 1st wave of imported cases.

³ Cases who were already quarantined and tested during quarantine to determine their status.

⁴ Cases who were identified through surveillance testing, such as the bi-weekly Rostered Routine Testing (RRT) of at-risk workers and testing of those with Acute Respiratory Illness (ARI) symptoms.

⁵ Incidence rates are rounded to two significant figures.

Figure 1.2: Epidemic Curve of the COVID-19 Outbreak by Press Release Date

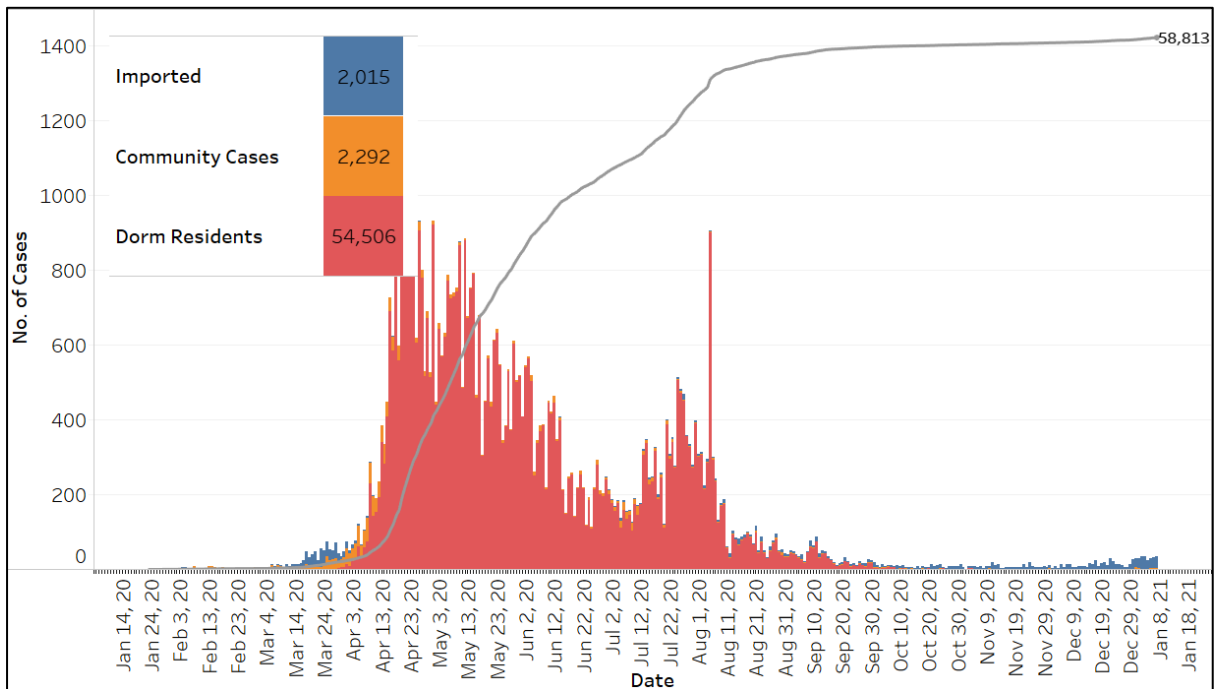


Figure 1.3: Epidemic Split Curve of the COVID-19 Outbreak by Press Release Date

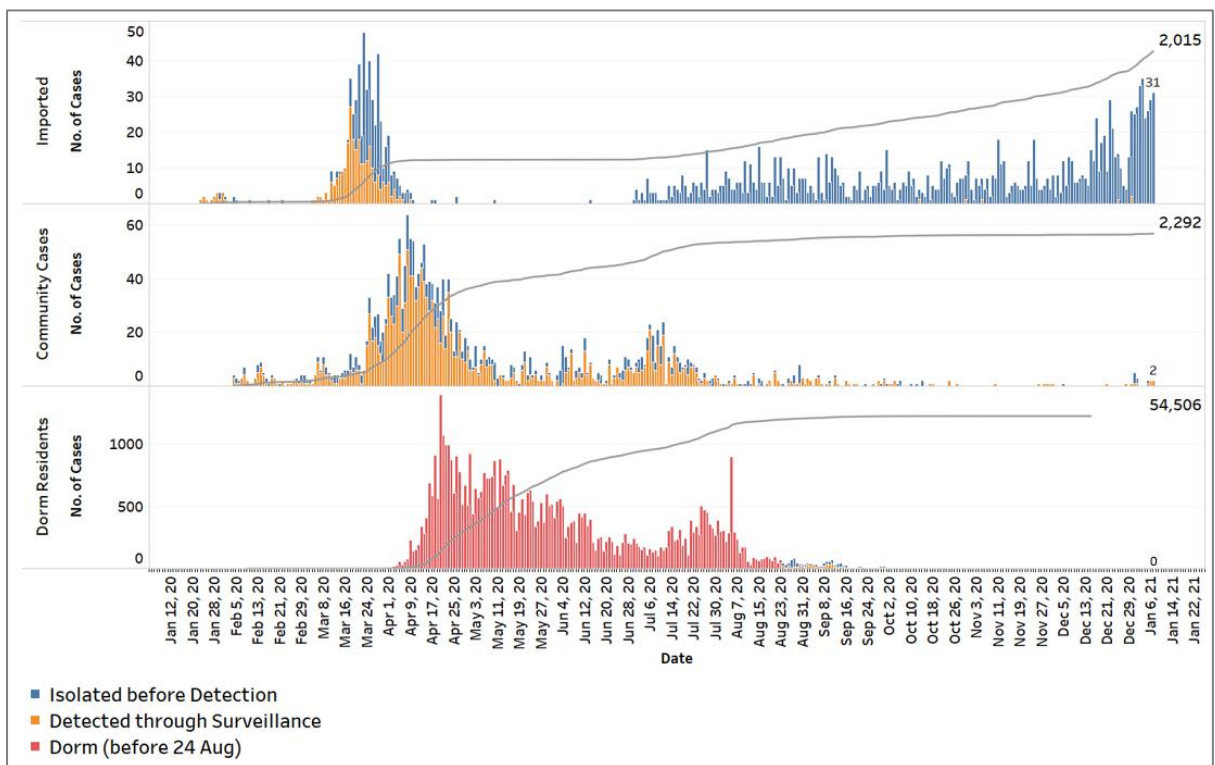


Figure 1.4: Epidemic Curve of Imported Cases by Press Release Date (left panel) and Arrival Date (right panel)

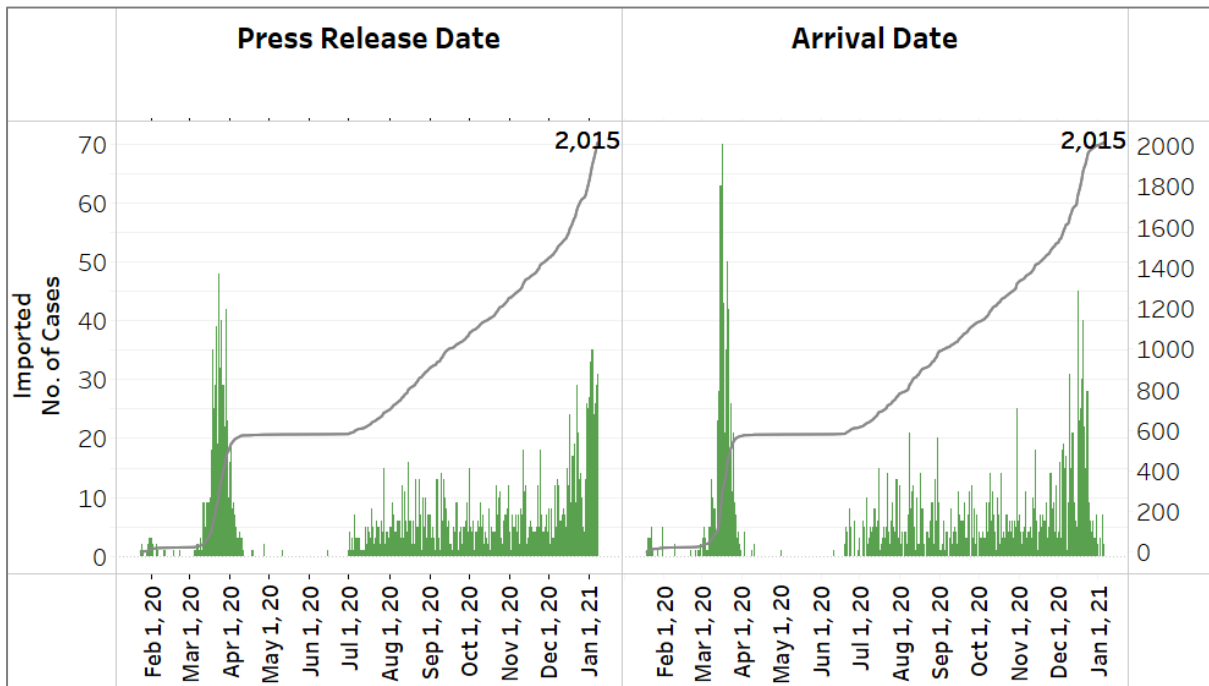
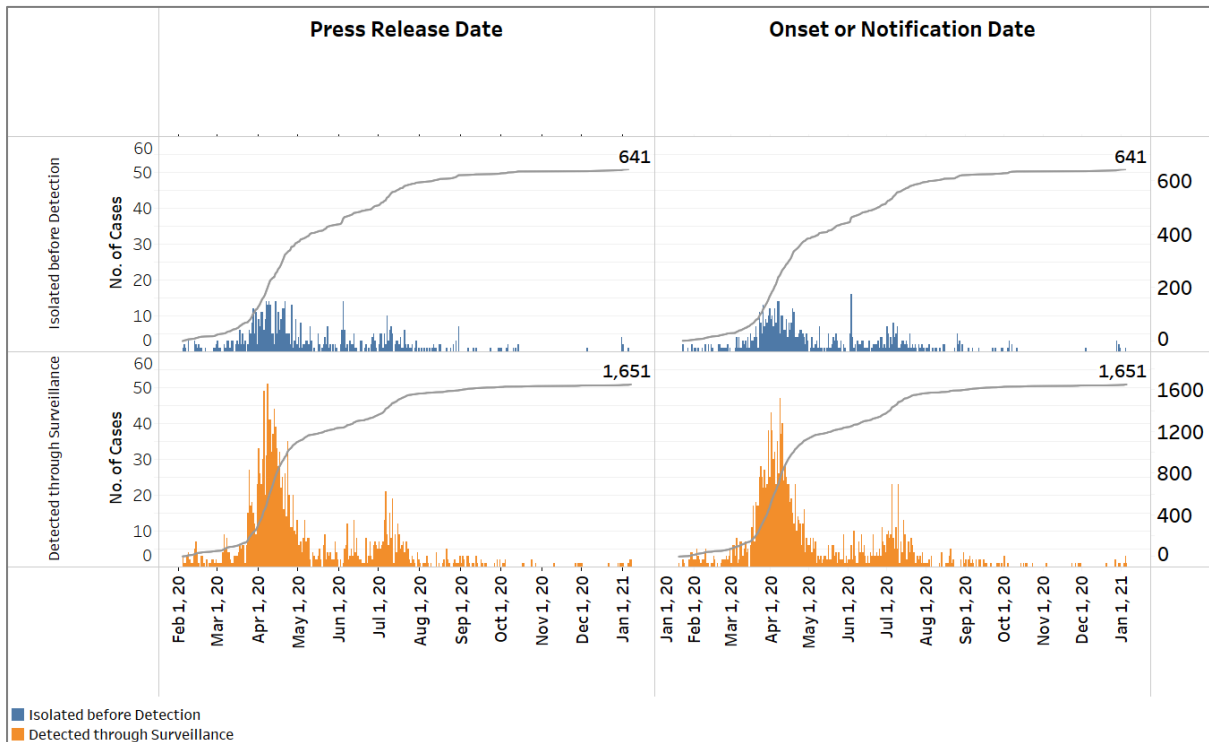
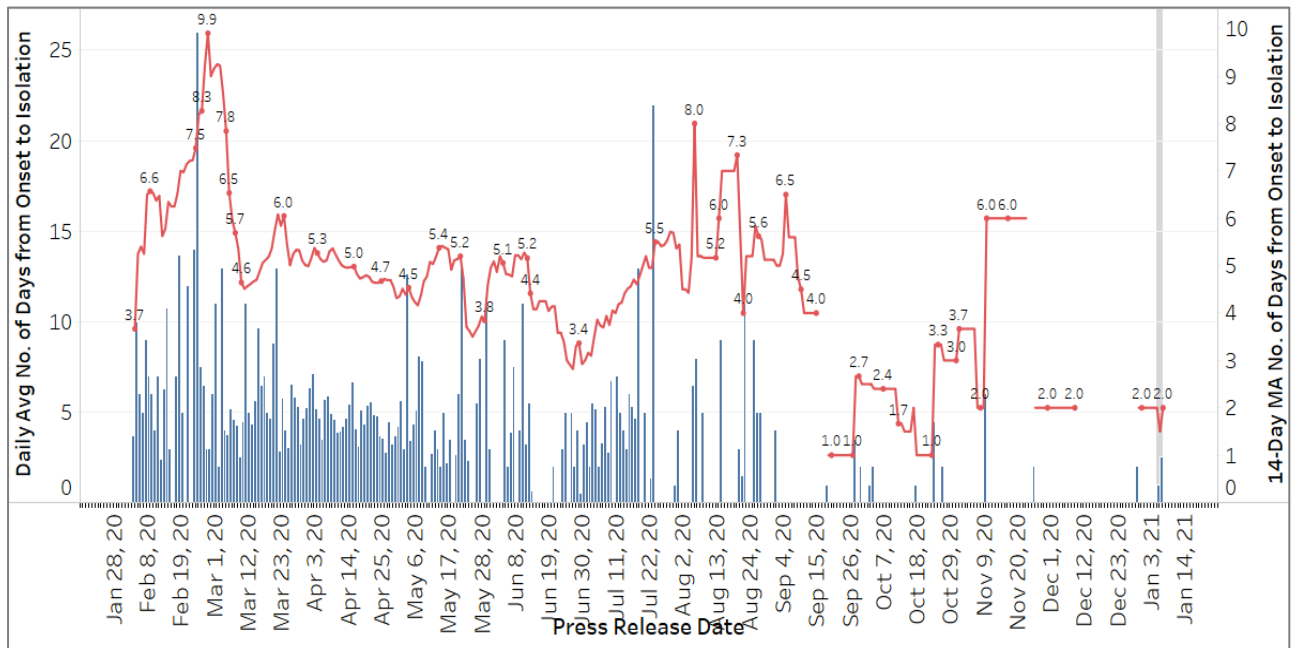


Figure 1.5: Epidemic Curve of Community Cases by Press Release Date (left panel) and by Symptom Onset or Notification Date⁶ (right panel)



⁶ Date of notification was used for cases that did not display any symptoms. The numbers with onset in the past few days may see an increase as more cases are notified.

Figure 1.6: Average Number of Days from Onset of Symptoms to Isolation (QO, hospital admission or notification to MOH) for Community Cases Detected through Surveillance in Each Day



Line represents the 14-day moving average; Bar represents the daily average⁷

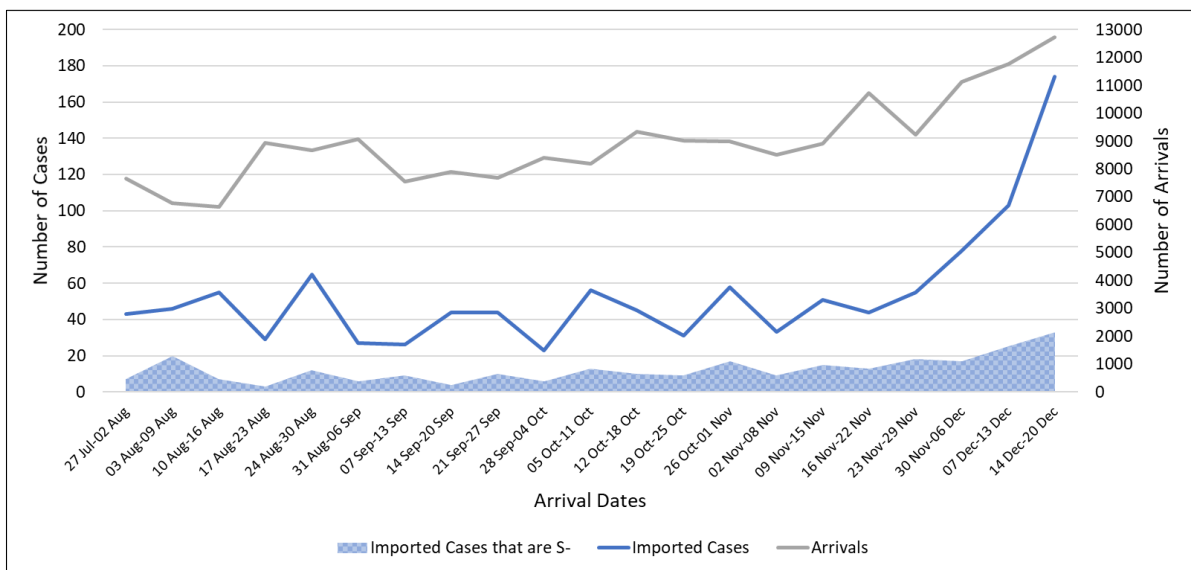
⁷ Area in grey demarcates data points for the past 3 days where some cases may still be pending epidemiological investigation. The bar graph shows the daily average number of days from symptoms onset to isolation, while the line graph shows the moving average for the past 14 days. Both graphs exclude cases with no onset date (asymptomatic) in the computation of the average. Community cases with symptoms who are isolated on the same day that symptoms occurred would have an isolation time of 0. There is a gap in the line graph from 16 to 18 Sep as there are no symptomatic cases in the preceding 14 days.

(2) Imported COVID-19 Cases

Figure 2.1: Serology and Symptom Status of Imported Cases Reported from 25 Dec to 31 Dec

Symptoms	S+	S-	Not Serology Tested	Pending Serology Result	Total No. of Cases
Asymptomatic	59	21	0	3	83
Symptomatic	8	3	0	3	14
Total	67	24	0	6	97

Figure 2.2: Weekly Total Number of Imported Cases, Imported Cases that are S- and Arrivals from 27 Jul to 20 Dec⁸ (next update will be on 11 Jan)



⁸ Data from the past 2 weeks are excluded as cases on SHN who arrived in the past 2 weeks may not have their test results yet. "Imported Cases that are S-" comprises imported cases who are (a) serology negative; or (b) not tested for serology.

(3) Number of COVID-19 Cases in Hospitals and Community Care Facilities**Figure 3.1:** Summary of Confirmed Cases by Status in the Past 14 Days

Press Release Date	Currently Admitted in Hospitals		In Care Facilities ⁹	Total Recovered		Total Demised	Total
	ICU	General Wards		Completed Isolation	Discharged from Hospital		
25-Dec	0	31	97	55,558	2,794	29	58,509
26-Dec	0	37	91	55,563	2,799	29	58,519
27-Dec	0	31	94	55,567	2,803	29	58,524
28-Dec	0	35	79	55,579	2,807	29	58,529
29-Dec	0	37	76	55,586	2,814	29	58,542
30-Dec	0	52	77	55,595	2,816	29	58,569
31-Dec	1	56	64	55,622	2,827	29	58,599
1-Jan	1	55	85	55,624	2,835	29	58,629
2-Jan	1	60	96	55,629	2,847	29	58,662
3-Jan	1	63	117	55,631	2,856	29	58,697
4-Jan	1	66	128	55,634	2,863	29	58,721
5-Jan	1	59	143	55,641	2,876	29	58,749
6-Jan	1	63	146	55,657	2,884	29	58,780
7-Jan	1	60	161	55,674	2,888	29	58,813

⁹ Community Care Facilities (i.e. D'Resort, EXPO, Tuas South), Private Hospitals (i.e. Concord International Hospital, Mt Elizabeth Hospital, Gleneagles Hospital, Mt Elizabeth Novena Hospital, Parkway East Hospital), Community Hospitals (i.e. Bright Vision Hospital) and other care facilities.

(4) Number of Stay-Home-Notice (SHN) Issued

Figure 4.1: Daily Number of SHN issued (19 Feb 2020 to 6 Jan 2021)

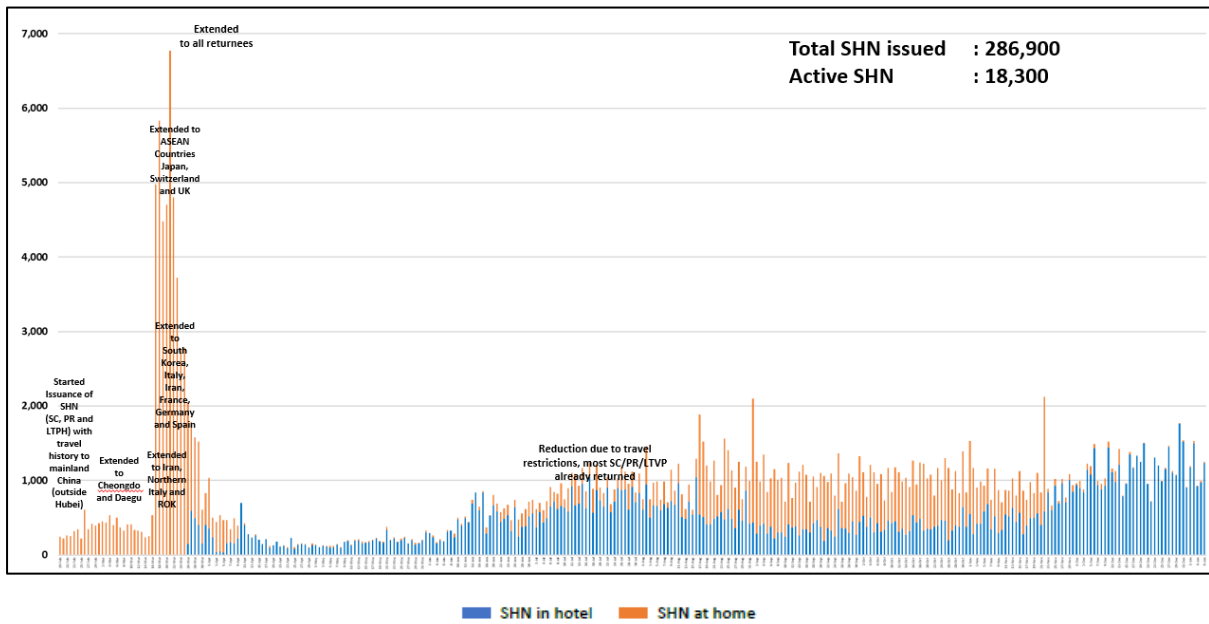
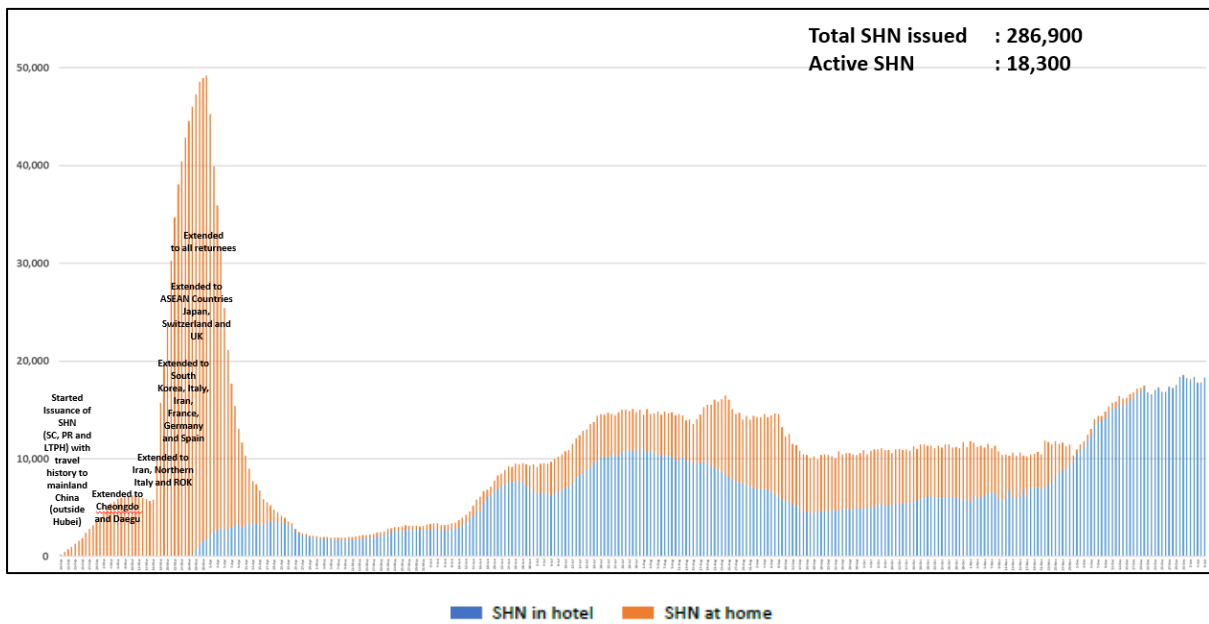


Figure 4.2: Active Stock Number of SHN (Home) and SHN (Hotel) (19 Feb 2020 to 6 Jan 2021)



(5) Number of Quarantine Orders (QO) Issued

Figure 5.1: Daily Number of QOs Issued

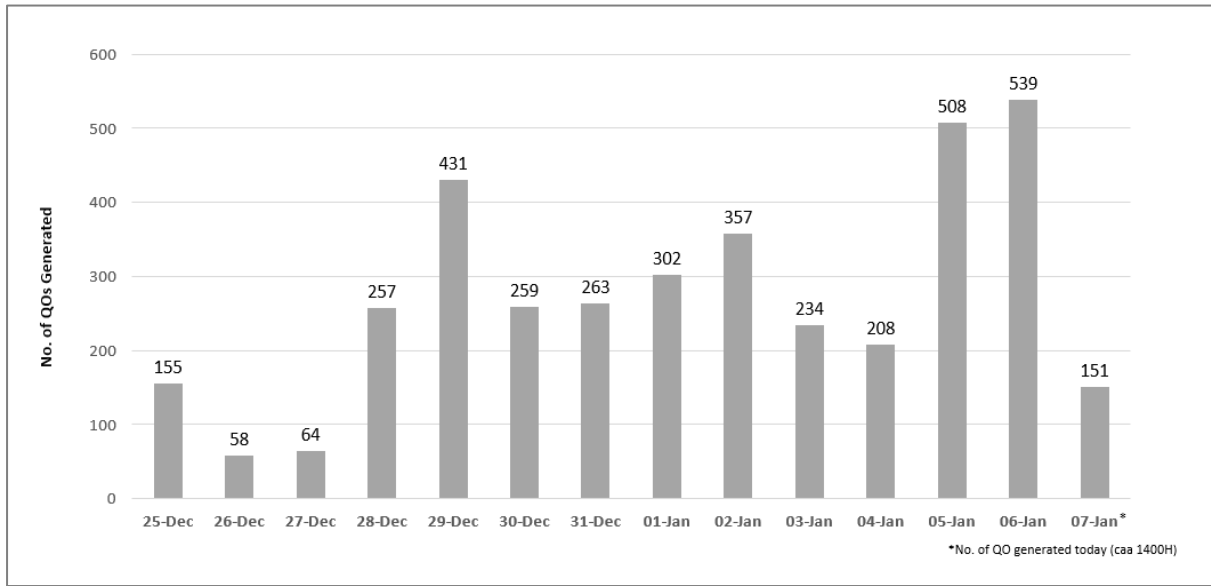


Figure 5.2: Active Number of Persons Under Quarantine (PUQs)

