

**20 May 2021 Daily Report on COVID-19****(1) Number of COVID-19 Cases****Figure 1.1:** Breakdown of New Confirmed Cases in the Past 14 Days

Press Release Date	Imported			Non-Imported Cases													All Cases	
				Community Cases								Dorm Residents <sup>1</sup>						
	Isolated before Detection	Detected through Surveillance <sup>2</sup>	Sub-Total	Isolated before Detection <sup>3</sup>				Detected through Surveillance <sup>4</sup>				Sub-Total	Incidence Rate <sup>5</sup> (per 100,000)	Isolated before Detection <sup>3</sup>	Detected through Surveillance <sup>4</sup>	No. of Cases		Incidence Rate <sup>5</sup> (per 100,000)
				SC/PR	G or F	Visitor	Sub-Total	SC/PR	G or F	Visitor	Sub-Total							
Before 7-May	4,035	323	4,358	418	285	3	706	1,038	656	10	1,704	2,410	-	54,518		54,518	-	61,286
7-May	21	0	21	1	0	0	1	3	0	0	3	4	0.074	0	0	0	0	25
8-May	13	0	13	1	1	0	2	4	1	0	5	7	0.13	0	0	0	0	20
9-May	18	0	18	3	0	0	3	6	1	0	7	10	0.19	0	0	0	0	28
10-May	16	0	16	0	0	0	0	3	0	0	3	3	0.056	0	0	0	0	19
11-May	12	0	12	4	4	0	8	2	3	0	5	13	0.24	0	0	0	0	25
12-May	6	0	6	3	0	1	4	5	1	0	6	10	0.19	0	0	0	0	16
13-May	10	0	10	8	5	0	13	8	3	0	11	24	0.45	0	0	0	0	34
14-May	27	1	28	12	4	0	16	5	3	0	8	24	0.45	0	0	0	0	52
15-May	12	0	12	11	0	0	11	5	3	0	8	19	0.35	0	0	0	0	31
16-May	11	0	11	11	2	0	13	15	10	0	25	38	0.71	0	0	0	0	49
17-May	7	0	7	4	2	0	6	13	2	0	15	21	0.39	0	0	0	0	28
18-May	11	0	11	9	5	0	14	10	3	0	13	27	0.5	0	0	0	0	38
19-May	4	0	4	23	5	0	28	4	2	0	6	34	0.63	0	0	0	0	38
20-May	14	0	14	12	3	0	15	9	3	0	12	27	0.5	0	0	0	0	41
Total since start of outbreak	4,217	324	4,541	520	316	4	840	1,130	691	10	1,831	2,671	-	54,518		54,518	-	61,730
Population at risk												5,381,000				323,000		5,704,000
Prevalence												0.05%				16.88%		1.08%

**Notes**

<sup>1</sup> Includes PRs and visitors residing in dorms. Breakdown of dorm cases into those detected through surveillance and those isolated before detection is not available before 24 Aug.

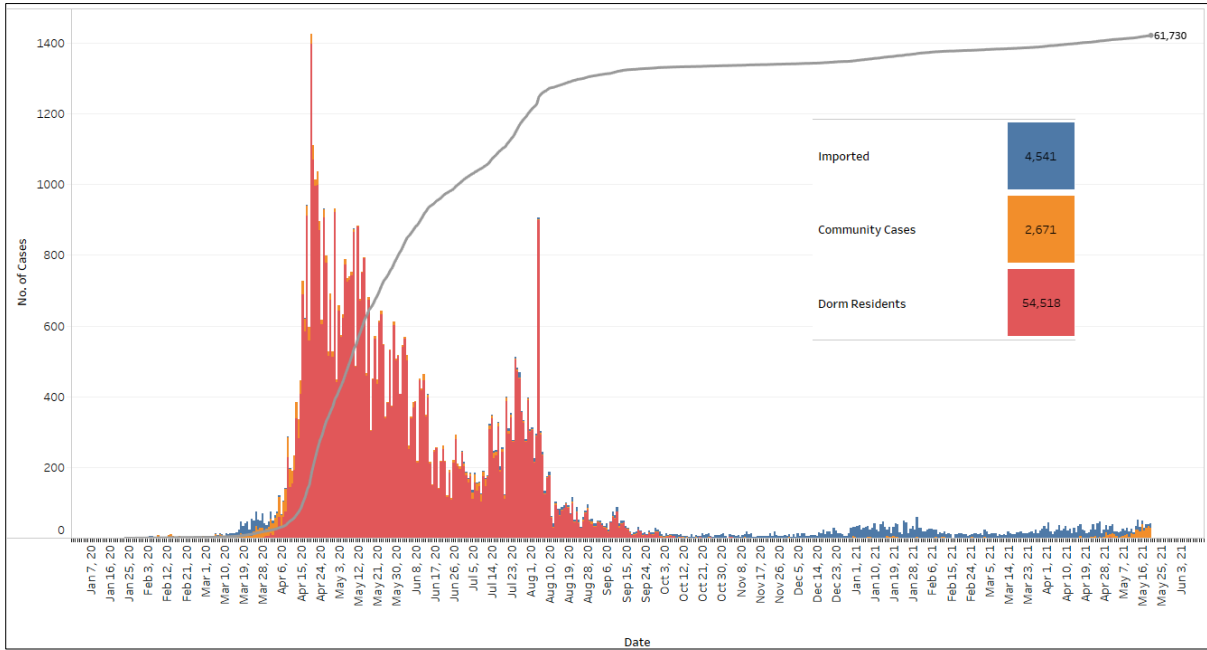
<sup>2</sup> 272 cases were reported before early Apr, and constitute the 1<sup>st</sup> wave of imported cases.

<sup>3</sup> Cases who were already quarantined and tested during quarantine to determine their status.

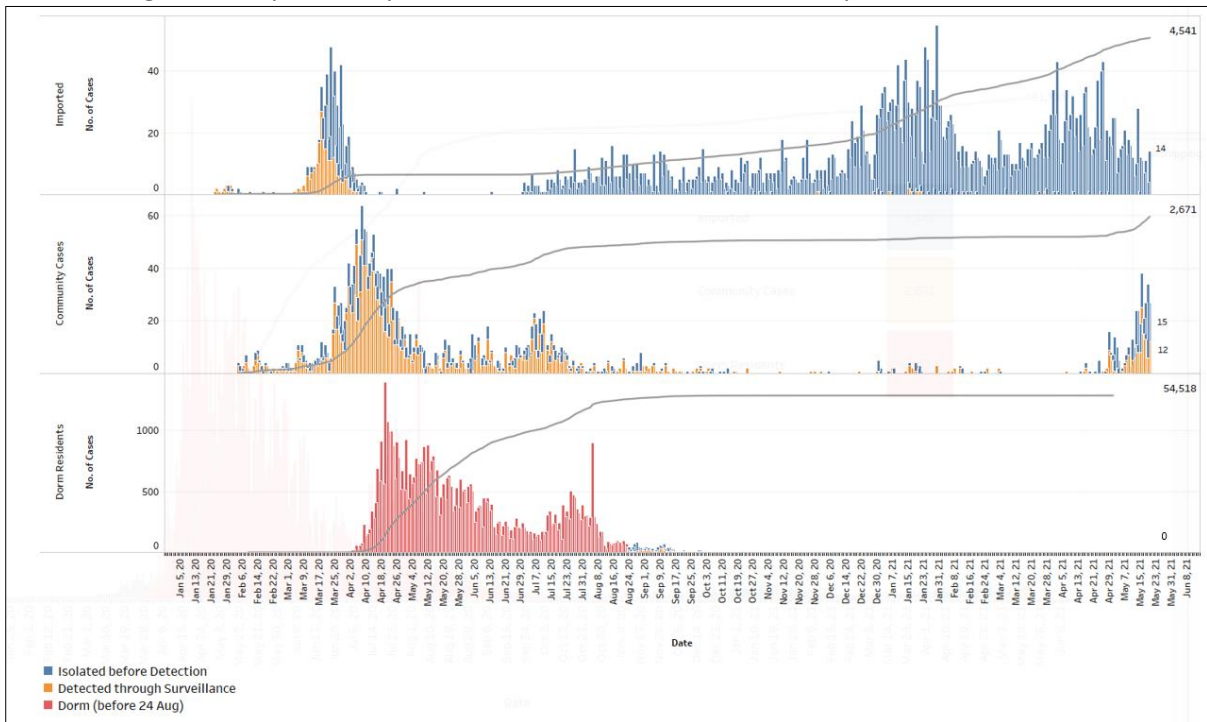
<sup>4</sup> Cases who were identified through surveillance testing, such as the bi-weekly Rostered Routine Testing (RRT) of at-risk workers and testing of those with Acute Respiratory Illness (ARI) symptoms.

<sup>5</sup> Incidence rates are rounded to two significant figures.

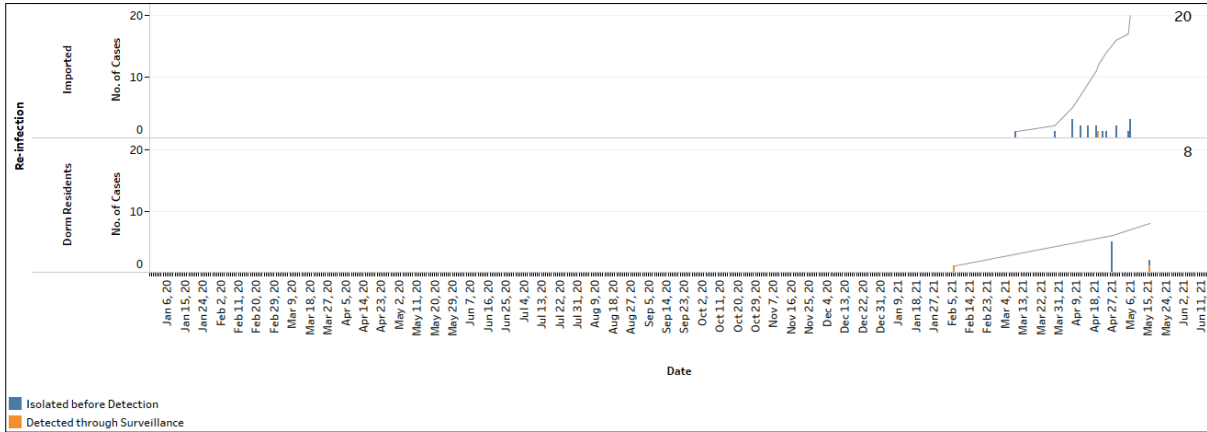
**Figure 1.2:** Epidemic Curve of the COVID-19 Outbreak by Press Release Date



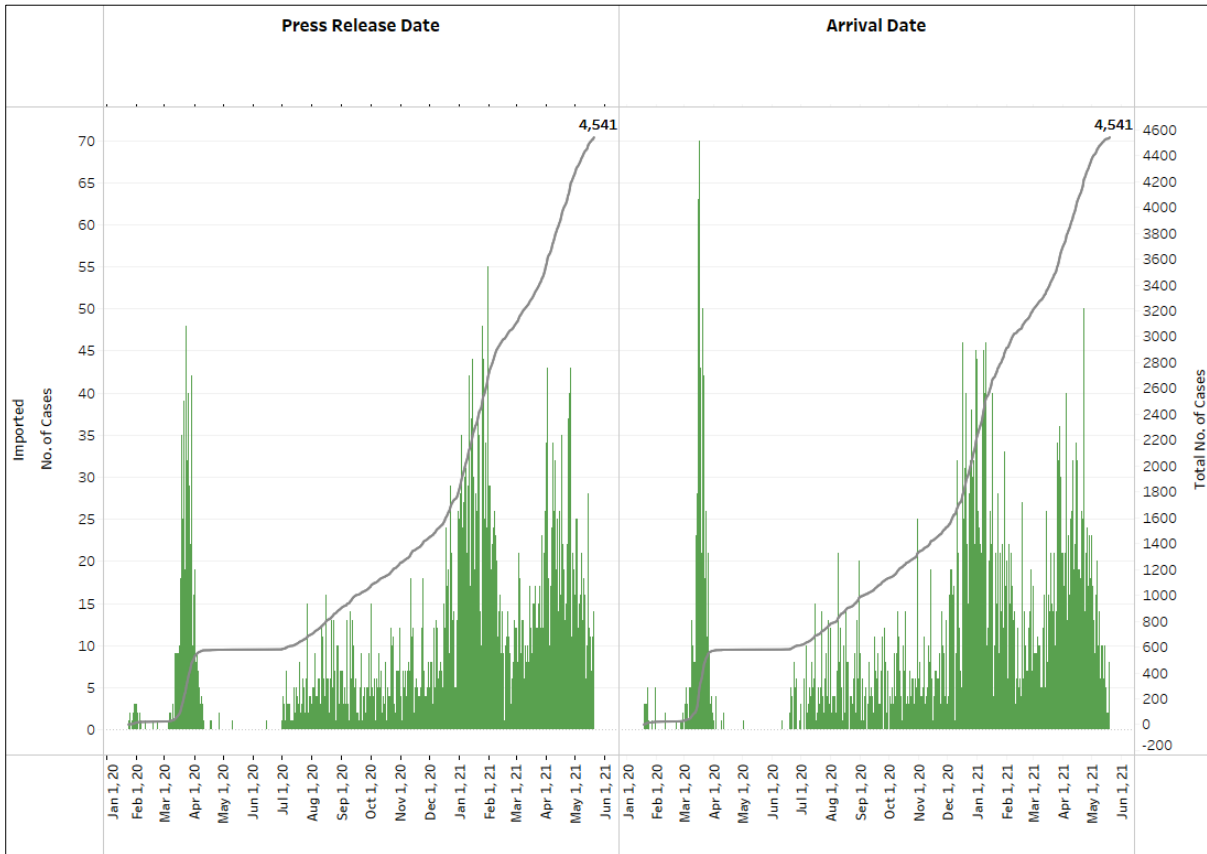
**Figure 1.3:** Epidemic Split Curve of the COVID-19 Outbreak by Press Release Date



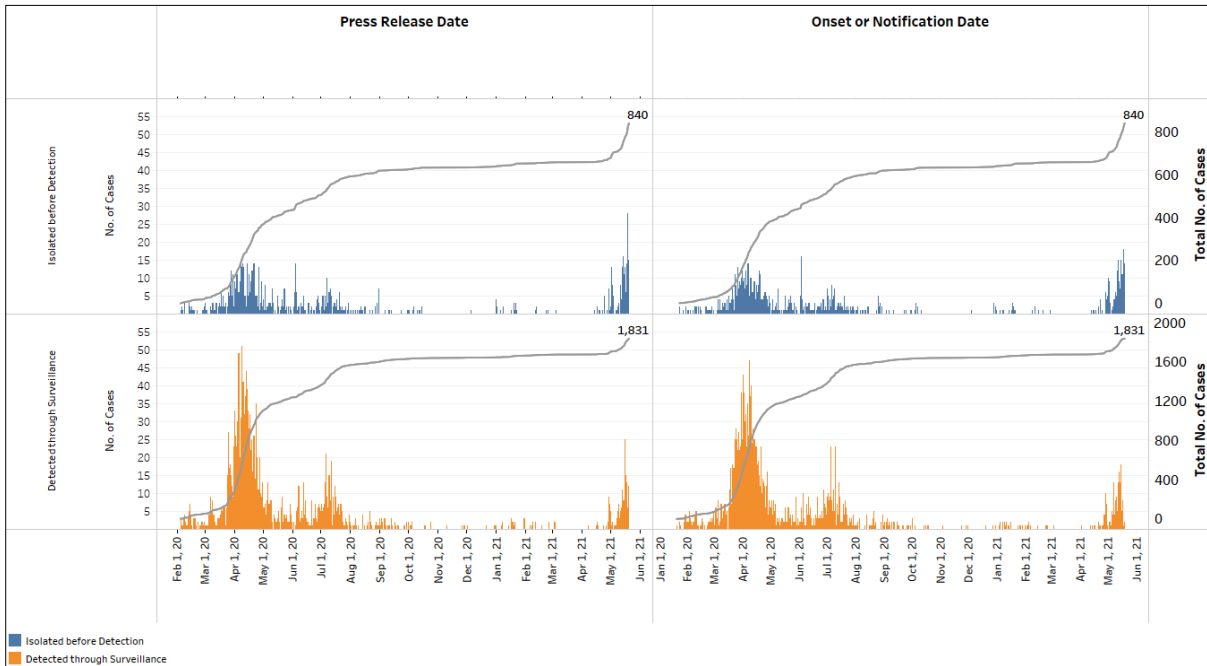
**Figure 1.4:** Epidemic Curve of COVID-19 Re-infections by Press Release Date



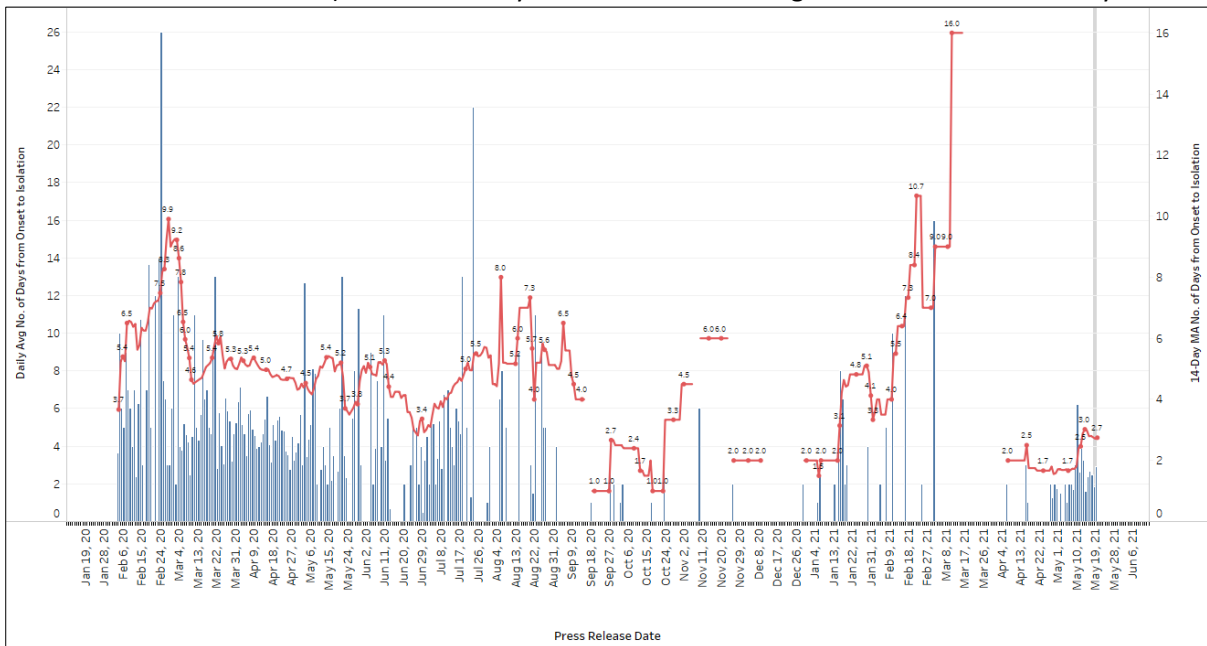
**Figure 1.5:** Epidemic Curve of Imported Cases by Press Release Date (left panel) and Arrival Date (right panel)



**Figure 1.6:** Epidemic Curve of Community Cases by Press Release Date (left panel) and by Symptom Onset or Notification Date<sup>6</sup> (right panel)



**Figure 1.7:** Average Number of Days from Onset of Symptoms to Isolation (QO, hospital admission or notification to MOH) for Community Cases Detected through Surveillance in Each Day



Line represents the 14-day moving average; Bar represents the daily average<sup>7</sup>

<sup>6</sup> Date of notification was used for cases that did not display any symptoms. The numbers with onset in the past few days may see an increase as more cases are notified.

<sup>7</sup> Area in grey demarcates data points for the past 3 days where some cases may still be pending epidemiological investigation. The bar graph shows the daily average number of days from symptoms onset to isolation, while the line graph shows the moving average for the past 14 days. Both graphs exclude cases with no onset date (asymptomatic) in the computation of the average. Community cases with symptoms who are isolated on the same day that symptoms occurred would have an isolation time of 0. There is a gap in the line graph from 16 to 18 Sep as there are no symptomatic cases in the preceding 14 days.

**Figure 1.8:** Weekly Reclassifications of Previously Reported Cases (*next update will be on 24 May*)

	Imported	Community Linked	Community Unlinked	Dorm Residents	Total
Total number of cases as at 10 May	4,420	1,622	818	54,518	<b>61,378</b>
Cases reported 11 May - 17 May	86	107	42	0	<b>235</b>
Net reclassifications of previously reported cases, incorporated 11 May - 17 May	1	4	-5	0	<b>0</b>
Total number of cases as at 17 May	4,507	1,733	855	54,518	<b>61,613</b>

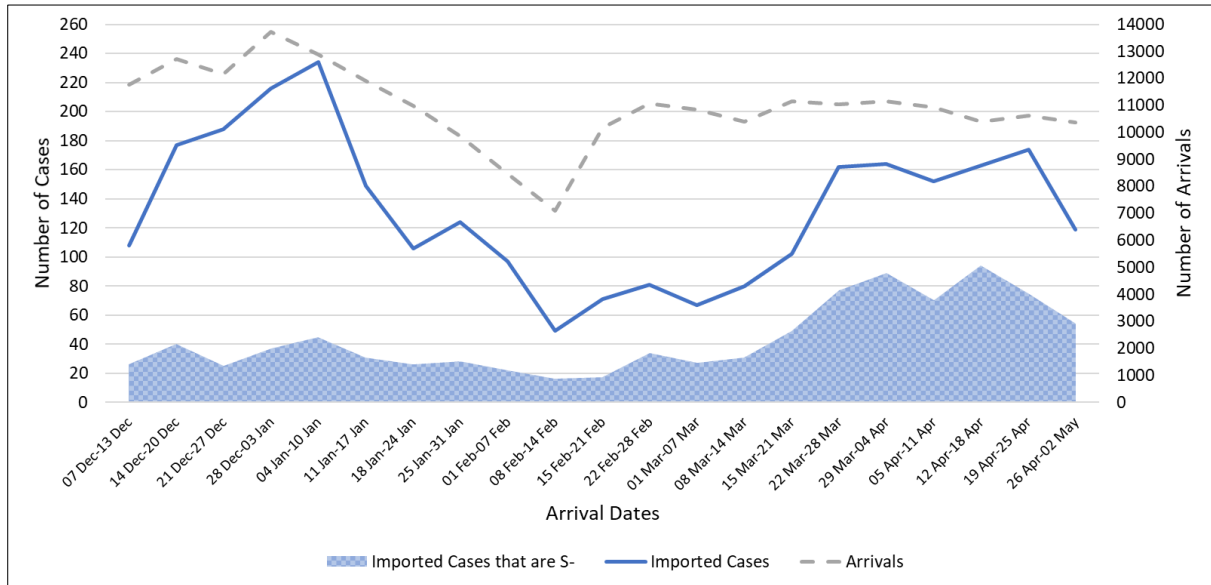
Case Number	PR date	Occupation	Link Reclassification	Rationale for Link Reclassification
61184	26 Mar 21	Foreign Domestic Worker	Community Unlinked → Imported (Myanmar) - Overseas infection	Case has recent travel history to Myanmar. She is likely an intermittent shedder previously infected overseas.
62517	28 Apr 21	Immigration and Checkpoints Authority (ICA) officer	Community Unlinked → Community Linked (Changi Airport Terminal 1)	Case is linked to his workplace, Changi Airport Terminal 1, where he comes into contact with travellers from high-risk countries.
62941	08 May 21	Student	Community Unlinked → Community Linked to Cluster 62873	Case had been at Raffles Medical at Changi Airport T3 on 23 Apr, 30 Apr and 3 May. Case also visited Kopitiam located at Terminal 3 (T3) Basement 2 on 3 May. Two other cases (62942 and 62945) visited the same foodcourt on 3 May. Case likely to have been infected while she was at Changi Airport T3 on 3 May.
62998	09 May 21	Risk Assessment Manager	Community Unlinked → Community Linked to Cluster 62873	Whole genome sequencing and phylogenetic analysis revealed that Case 62998 is linked to the Case 62873 cluster.
63005	09 May 21	Landscaper	Community Unlinked → Community Linked to Cluster 62873	Case had been at Changi Airport Terminal 3 (T3) on 3 May and 4 May, and had visited same locations as 2 other cases (62940 and 62942) during their infectious period. Case likely to have been infected while he was at Changi Airport T3.

**(2) Imported COVID-19 Cases**

**Figure 2.1:** Serology and Symptom Status of Imported Cases Reported from 07 May to 13 May

Symptoms	S+	S-	Not Serology Tested	Pending Serology Result	Total No. of Cases
Asymptomatic	57	26	0	1	84
Symptomatic	6	6	0	0	12
<b>Total</b>	<b>63</b>	<b>32</b>	<b>0</b>	<b>1</b>	<b>96</b>

**Figure 2.2:** Weekly Total Number of Imported Cases, Imported Cases that are S- and Arrivals from 07 Dec 20 to 02 May 21 (next update will be on 24 May)<sup>8</sup>



<sup>8</sup> Data from the past 2 weeks are excluded as arrivals on SHN who arrived in the past 2 weeks may not have their SHN exit test results yet. "Imported Cases that are S-" comprises imported cases who are (a) serology negative; or (b) not tested for serology. "Imported Cases with Ct values 30 and below" have low Ct values which are suggestive of high viral load. Notwithstanding, Ct values should be interpreted with caution along with other epidemiological and clinical factors.

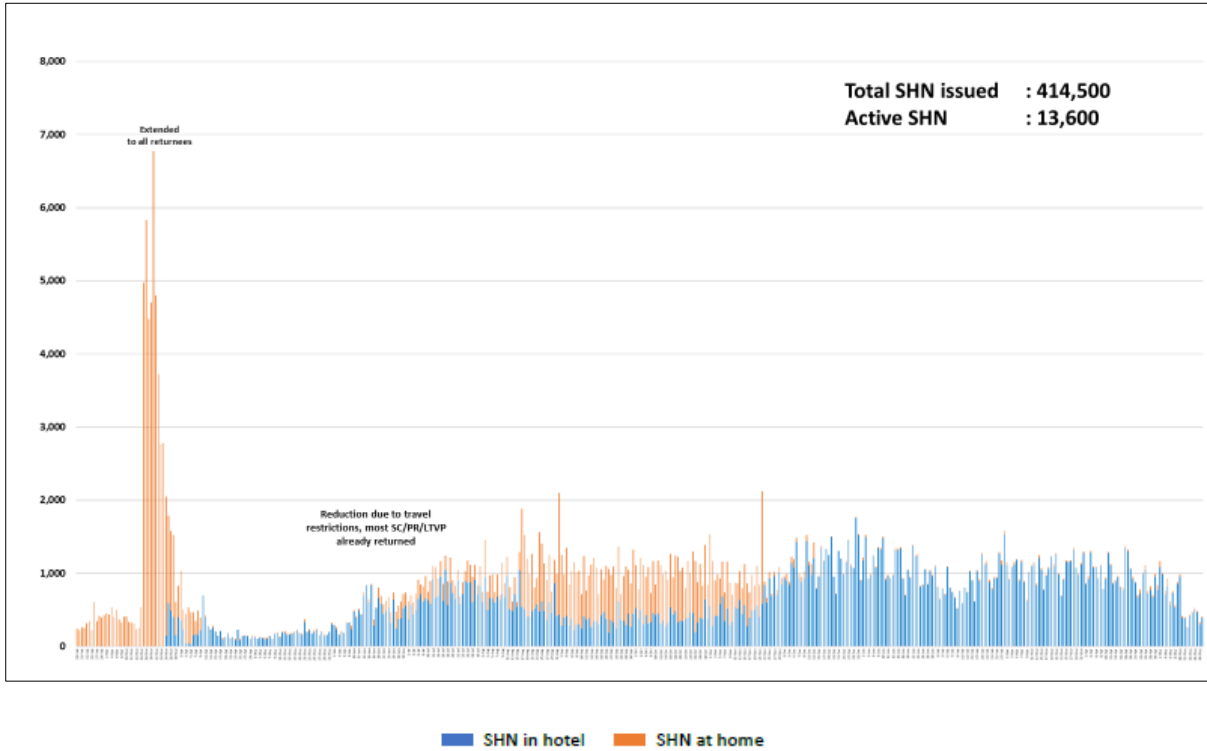
**(3) Number of COVID-19 Cases in Hospitals and Community Care Facilities****Figure 3.1:** Summary of Confirmed Cases by Status in the Past 14 Days

Press Release Date	Currently Admitted in Hospitals		In Care Facilities <sup>9</sup>	Total Recovered		Total Demised	Total
	ICU	General Wards		Completed Isolation	Discharged from Hospital		
7-May	2	136	236	57,586	3,320	31	<b>61,311</b>
8-May	2	131	255	57,589	3,323	31	<b>61,331</b>
9-May	2	131	262	57,606	3,327	31	<b>61,359</b>
10-May	3	132	259	57,625	3,328	31	<b>61,378</b>
11-May	3	141	253	57,643	3,332	31	<b>61,403</b>
12-May	3	140	239	57,663	3,343	31	<b>61,419</b>
13-May	3	147	243	57,682	3,347	31	<b>61,453</b>
14-May	3	177	247	57,697	3,350	31	<b>61,505</b>
15-May	3	187	253	57,708	3,354	31	<b>61,536</b>
16-May	2	205	243	57,741	3,363	31	<b>61,585</b>
17-May	3	210	246	57,754	3,369	31	<b>61,613</b>
18-May	5	215	266	57,765	3,369	31	<b>61,651</b>
19-May	5	216	254	57,807	3,376	31	<b>61,689</b>
20-May	4	236	229	57,852	3,377	32	<b>61,730</b>

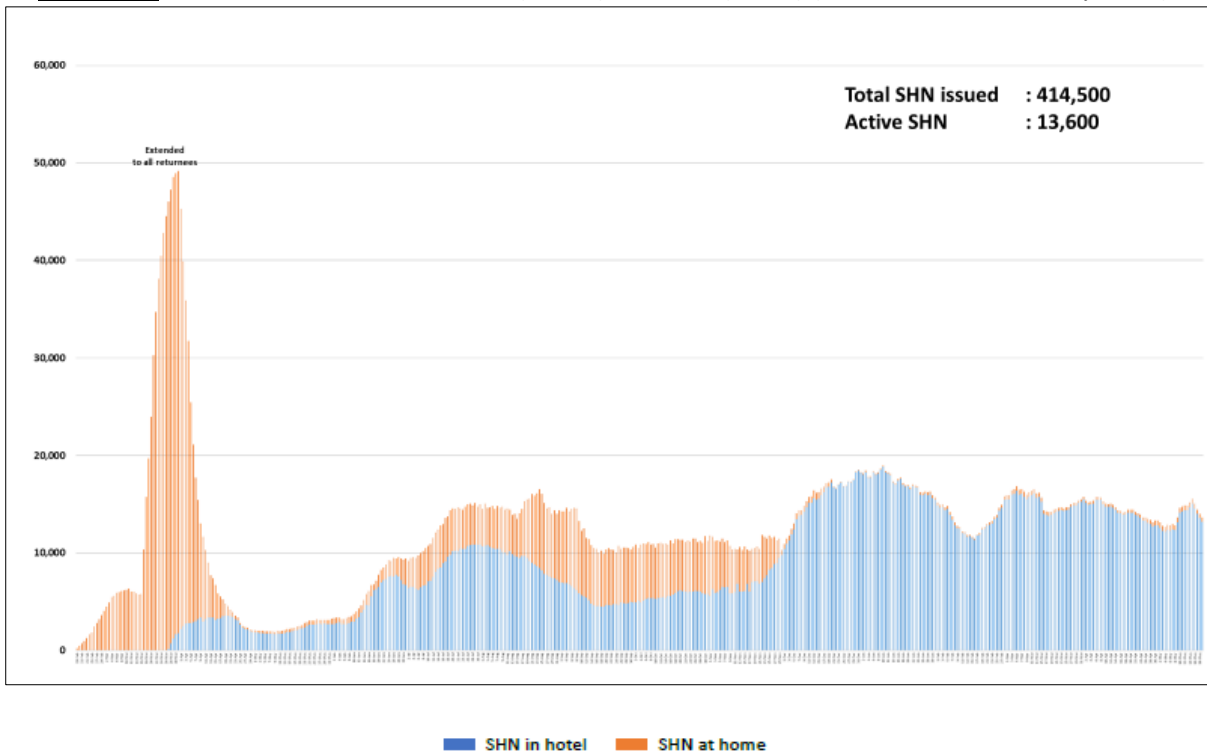
<sup>9</sup> Community Care Facilities (i.e. D'Resort, EXPO, Tuas South), Private Hospitals (i.e. Concord International Hospital, Mt Elizabeth Hospital, Gleneagles Hospital, Mt Elizabeth Novena Hospital, Parkway East Hospital), Community Hospitals (i.e. Bright Vision Hospital) and other care facilities.

#### (4) Number of Stay-Home-Notice (SHN) Issued

**Figure 4.1:** Daily Number of SHN issued (19 Feb 2020 to 19 May 2021)



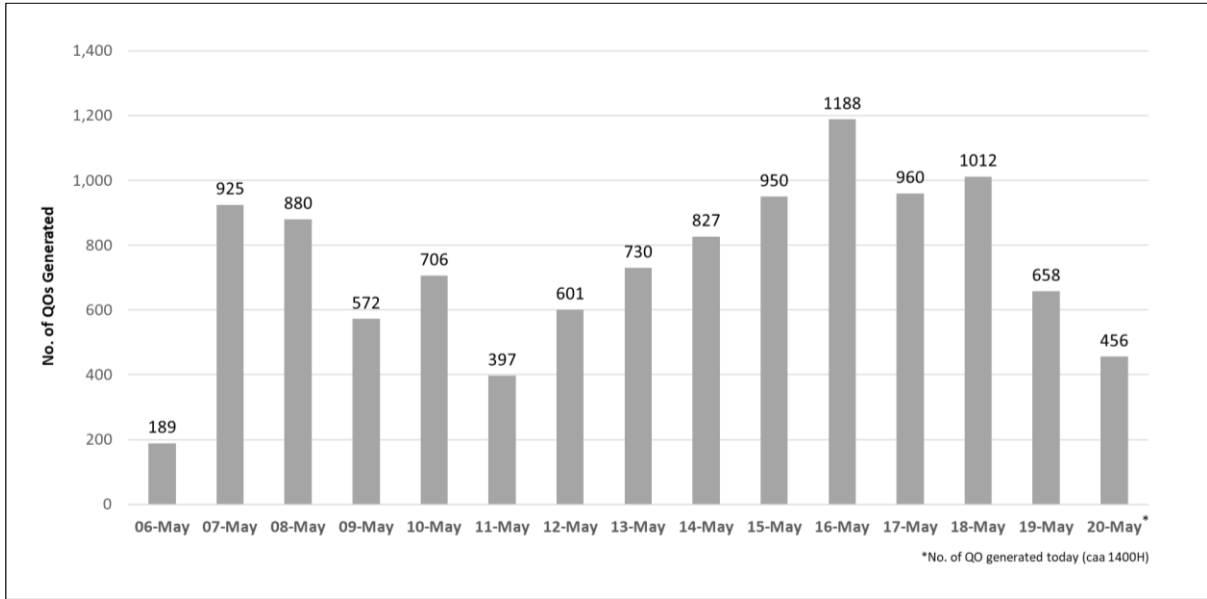
**Figure 4.2:** Active Stock Number of SHN (Home) and SHN (Hotel) (19 Feb 2020 to 19 May 2021)





**(5) Number of Quarantine Orders (QO) Generated**

**Figure 5.1:** Daily Number of QOs Generated



**Figure 5.2:** Active Number of Persons Under Quarantine (PUQs)

