

3 June 2021 Daily Report on COVID-19**(1) Number of COVID-19 Cases****Figure 1.1:** Breakdown of New Confirmed Cases in the Past 14 Days

Press Release Date	Imported			Non-Imported Cases													All Cases	
	Isolated before Detection	Detected through Surveillance ²	Sub-Total	Community Cases								Dorm Residents ¹						
				Isolated before Detection ³				Detected through Surveillance ⁴				Sub-Total	Incidence Rate ⁵ (per 100,000)	Isolated before Detection ³	Detected through Surveillance ⁴	No. of Cases		Incidence Rate ⁵ (per 100,000)
				SC/PR	G or F	Visitor	Sub-Total	SC/PR	G or F	Visitor	Sub-Total							
Before 21-May	4,218	325	4,543	520	318	4	842	1,130	687	10	1,827	2,669	-	54,518		54,518	-	61,730
21-May	10	0	10	13	4	0	17	9	4	0	13	30	0.56	0	0	0	0	40
22-May	7	0	7	10	2	0	12	4	6	0	10	22	0.41	0	0	0	0	29
23-May	3	0	3	9	3	0	12	4	5	0	9	21	0.39	0	1	1	0.31	25
24-May	12	0	12	8	4	0	12	8	4	0	12	24	0.45	0	0	0	0	36
25-May	8	1	9	7	1	0	8	6	4	0	10	18	0.33	0	3	3	0.93	30
26-May	2	0	2	9	4	0	13	8	2	0	10	23	0.43	1	0	1	0.31	26
27-May	8	1	9	12	0	0	12	2	0	0	2	14	0.26	0	1	1	0.31	24
28-May	15	0	15	6	2	0	8	6	1	0	7	15	0.28	0	0	0	0	30
29-May	10	0	10	11	2	0	13	4	6	0	10	23	0.43	0	0	0	0	33
30-May	6	0	6	6	5	0	11	4	3	1	8	19	0.35	0	0	0	0	25
31-May	7	0	7	10	1	0	11	4	1	0	5	16	0.30	0	0	0	0	23
1-Jun	2	1	3	3	2	1	6	7	2	0	9	15	0.28	0	0	0	0	18
2-Jun	7	0	7	13	4	0	17	5	2	0	7	24	0.45	0	0	0	0	31
3-Jun	10	0	10	21	6	1	28	6	1	0	7	35	0.65	0	0	0	0	45
Total since start of outbreak	4,325	328	4,653	658	358	6	1,022	1,207	728	11	1,946	2,968	-	54,524		54,524	-	62,145
Population at risk												5,381,000				323,000		5,704,000
Prevalence												0.06%				16.88%		1.09%

Notes

¹ Includes PRs and visitors residing in dorms. Breakdown of dorm cases into those detected through surveillance and those isolated before detection is not available before 24 Aug.

² 272 cases were reported before early Apr, and constitute the 1st wave of imported cases.

³ Cases who were already quarantined and tested during quarantine to determine their status.

⁴ Cases who were identified through surveillance testing, such as the bi-weekly Rostered Routine Testing (RRT) of at-risk workers and testing of those with Acute Respiratory Illness (ARI) symptoms.

⁵ Incidence rates are rounded to two significant figures.

Figure 1.2: Epidemic Curve of the COVID-19 Outbreak by Press Release Date

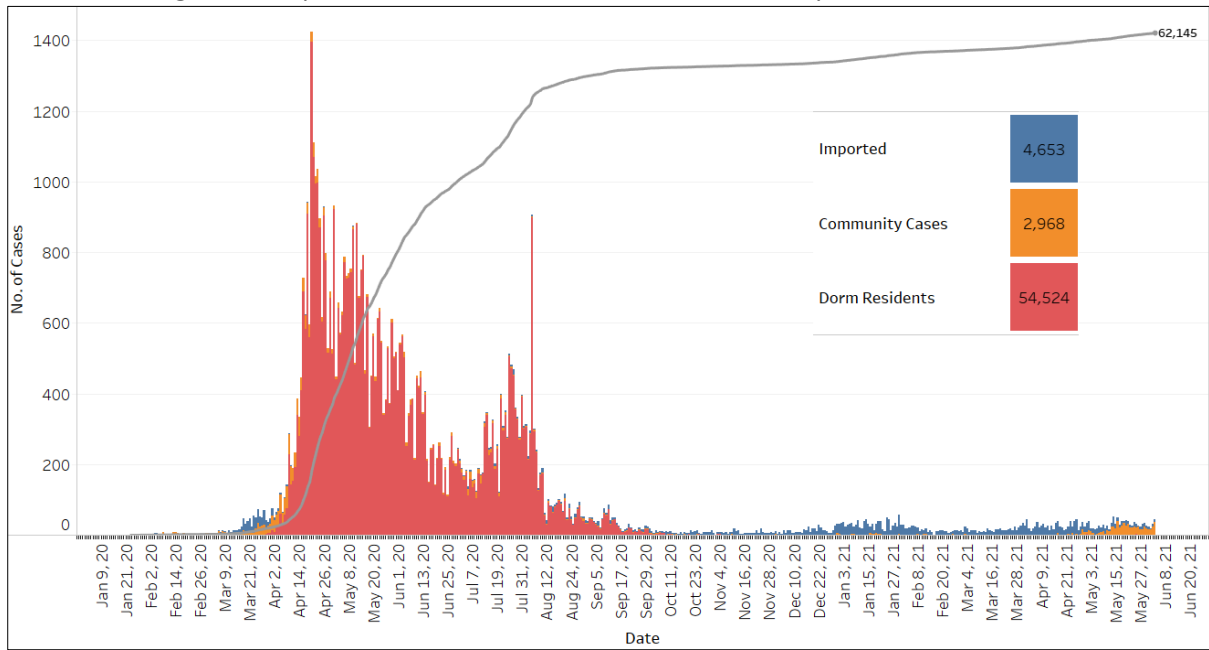


Figure 1.3: Epidemic Split Curve of the COVID-19 Outbreak by Press Release Date

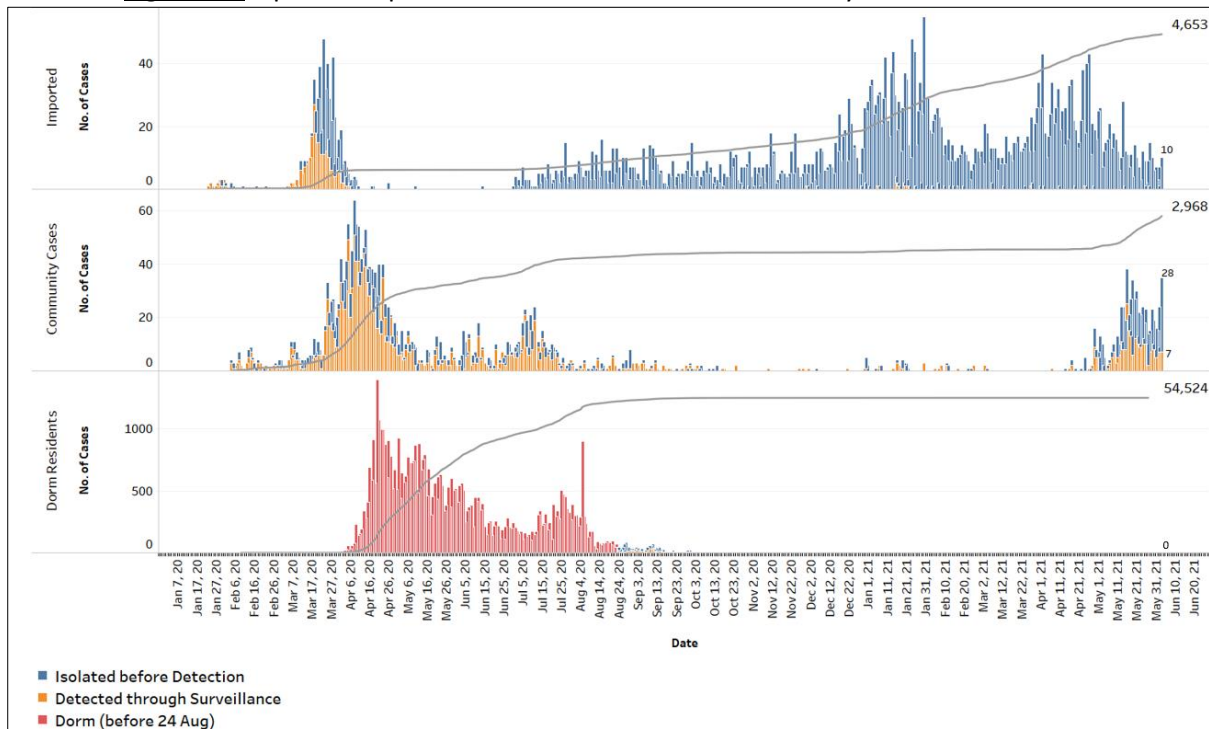


Figure 1.4: Epidemic Curve of COVID-19 Re-infections by Press Release Date

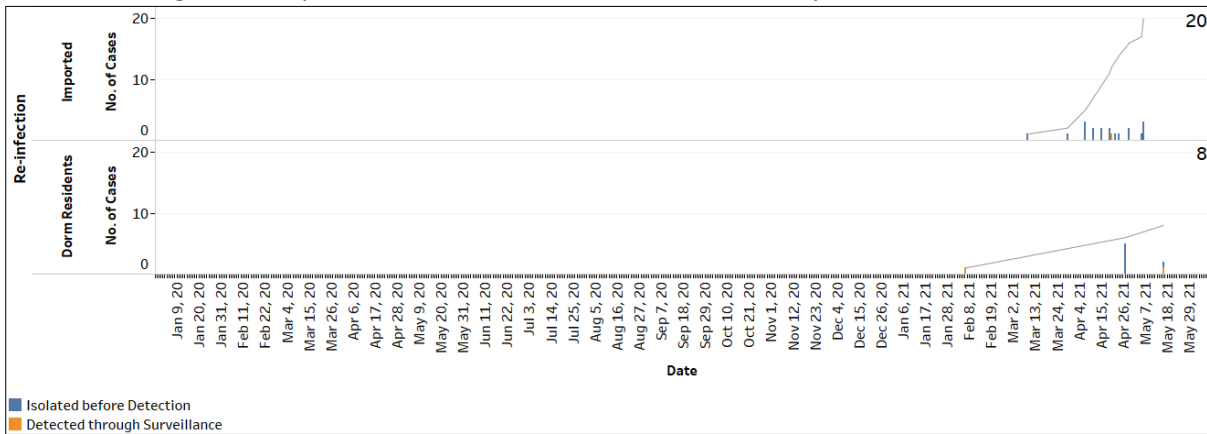


Figure 1.5: Epidemic Curve of Imported Cases by Press Release Date (left panel) and Arrival Date (right panel)

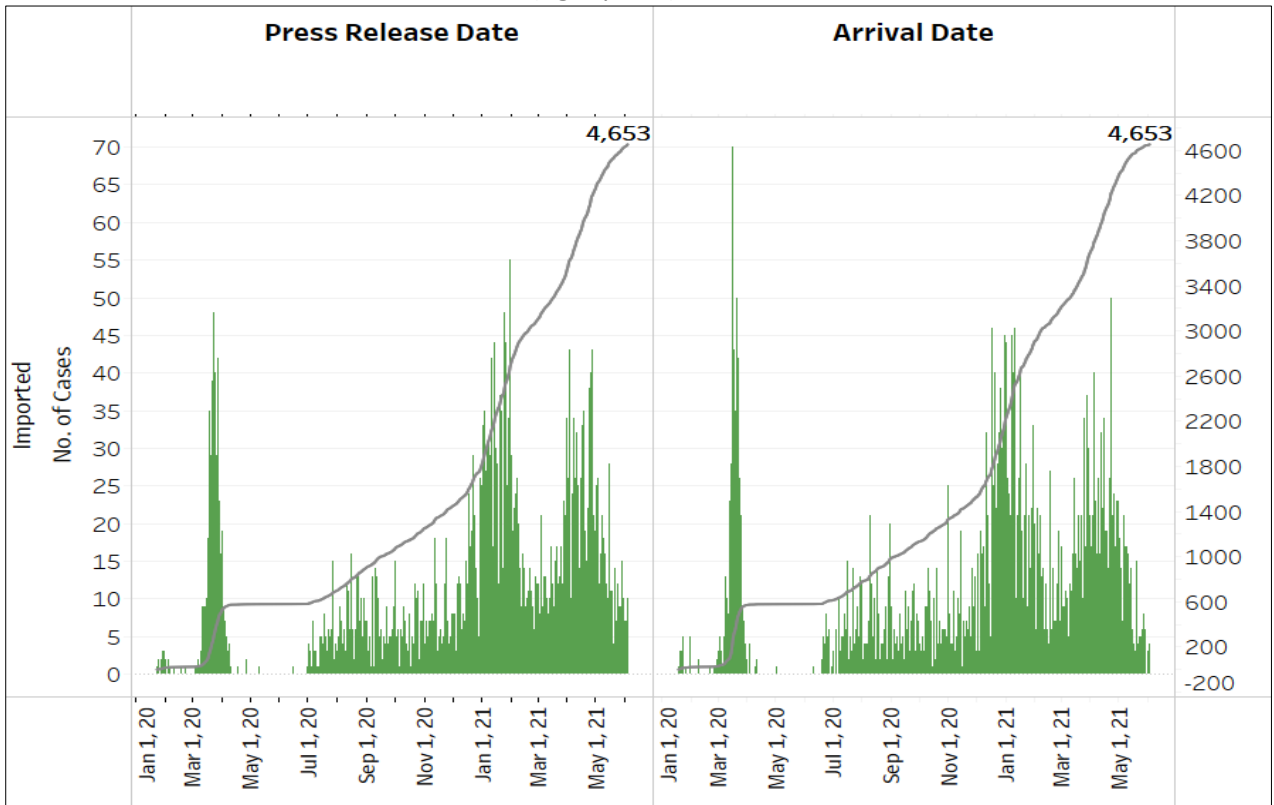


Figure 1.6: Epidemic Curve of Community Cases by Press Release Date (left panel) and by Symptom Onset or Notification Date⁶ (right panel)

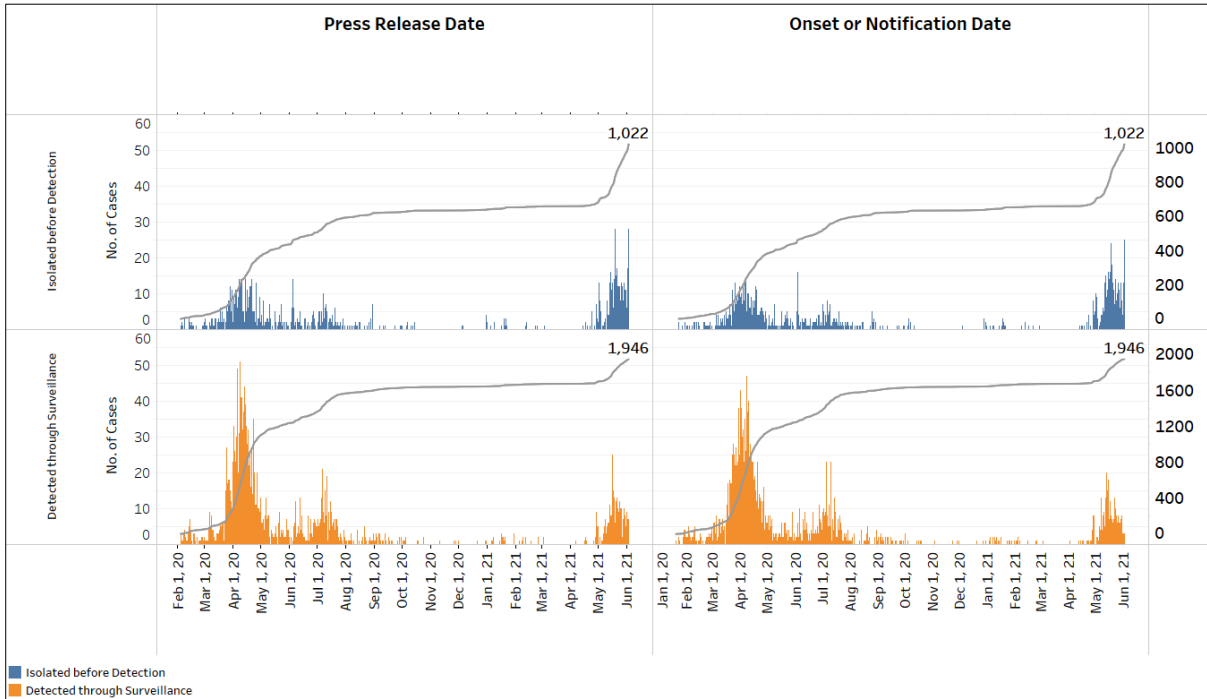
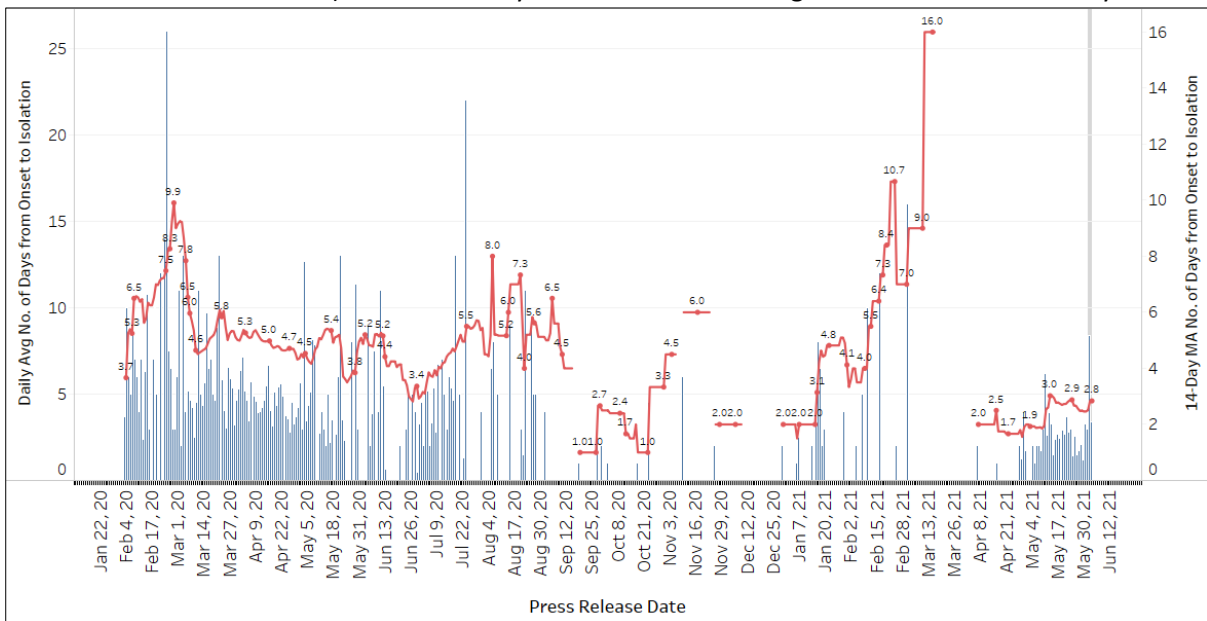


Figure 1.7: Average Number of Days from Onset of Symptoms to Isolation (QO, hospital admission or notification to MOH) for Community Cases Detected through Surveillance in Each Day



Line represents the 14-day moving average; Bar represents the daily average⁷

⁶ Date of notification was used for cases that did not display any symptoms. The numbers with onset in the past few days may see an increase as more cases are notified.

⁷ Area in grey demarcates data points for the past 3 days where some cases may still be pending epidemiological investigation. The bar graph shows the daily average number of days from symptoms onset to isolation, while the line graph shows the moving average for the past 14 days. Both graphs exclude cases with no onset date (asymptomatic) in the computation of the average. Community cases with symptoms who are isolated on the same day that symptoms occurred would have an isolation time of 0. There is a gap in the line graph from 16 to 18 Sep as there are no symptomatic cases in the preceding 14 days.

Figure 1.8: Weekly Reclassifications of Previously Reported Cases

	Imported	Community Linked	Community Unlinked	Dorm Residents	Total
Total number of cases as at 24 May	4,574	1,901	866	54,519	61,860
Cases reported 25 May - 31 May	58	101	27	5	191
Net reclassifications of previously reported cases, incorporated 25 May - 31 May	1	2	-3	0	0
Total number of cases as at 31 May	4,633	2,004	890	54,524	62,051

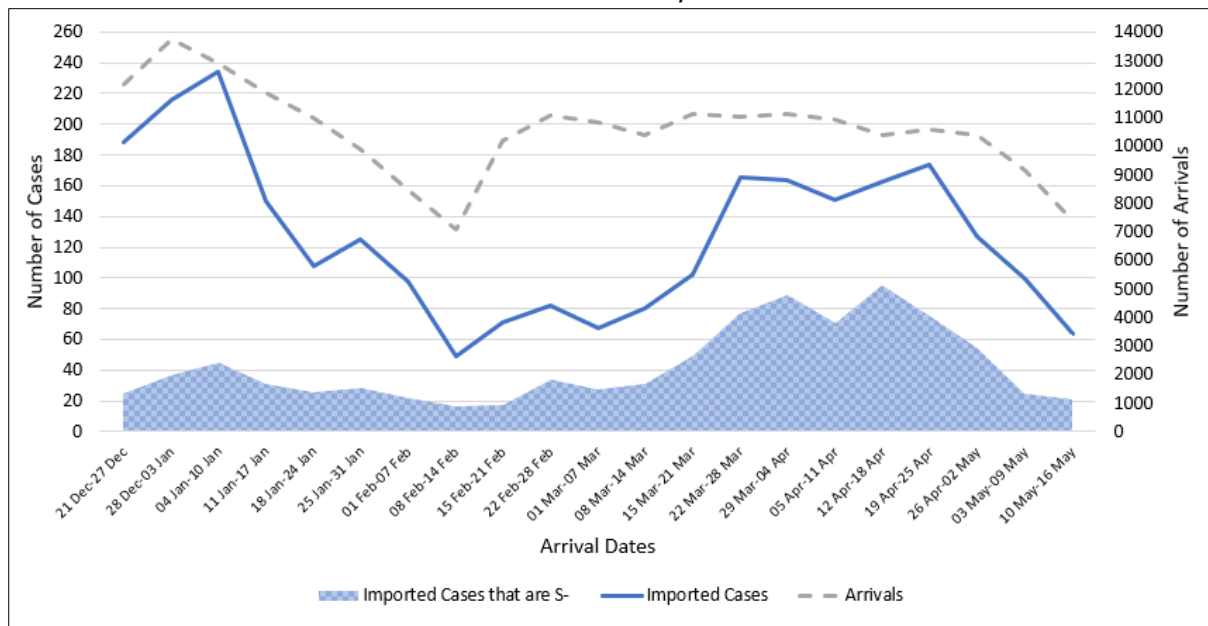
Case Number	PR date	Occupation	Link Reclassification	Rationale for Link Reclassification
62734	2 May 21	Foreign Domestic Worker	Community Unlinked → Imported (India) - overseas infection	Case has recent travel history to India. She is likely an intermittent shedder previously infected overseas.
62969	9 May 21	Private Hire Vehicle (Grab) Driver	Community Unlinked → Community Linked (Case 62505)	Case is phylogenetically linked to case 62505, the index case of Cluster 62969.
63854	29 May 21	Cook	Community Unlinked → Community Linked (Cluster 63853)	Case works in the same coffeeshop as 63853 (308 Anchorvale Road).

(2) Imported COVID 19 Cases

Figure 2.1: Serology and Symptom Status of Imported Cases Reported from 21 May to 27 May

Symptoms	S+	S	Not Serology Tested	Pending Serology Result	Total No. of Cases
Asymptomatic	41	6	0	3	50
Symptomatic	0	2	0	0	2
Total	41	8	0	3	52

Figure 2.2: Weekly Total Number of Imported Cases, Imported Cases that are S and Arrivals from 21 Dec 20 to 16 May 21⁸



⁸ Data from the past 2 weeks are excluded as arrivals on SHN who arrived in the past 2 weeks may not have their SHN exit test results yet. "Imported Cases that are S-" comprises imported cases who are (a) serology negative; or (b) not tested for serology. "Imported Cases with Ct values 30 and below" have low Ct values which are suggestive of high viral load. Notwithstanding, Ct values should be interpreted with caution along with other epidemiological and clinical factors.

Number of COVID 19 Cases in Hospitals and Community Care Facilities

Figure 3.1: Summary of Confirmed Cases by Status in the Past 14 Days

Press Release Date	Currently Admitted in Hospitals		In Care Facilities ⁹	Total Recovered		Total Demised	Total
	ICU	General Wards		Completed Isolation	Discharged from Hospital		
21-May	4	245	247	57,861	3,381	32	61,770
22-May	5	250	235	57,893	3,384	32	61,799
23-May	3	239	256	57,903	3,391	32	61,824
24-May	3	241	268	57,920	3,396	32	61,860
25-May	2	248	279	57,932	3,397	32	61,890
26-May	2	240	282	57,953	3,407	32	61,916
27-May	2	243	291	57,965	3,407	32	61,940
28-May	3	238	290	57,993	3,414	32	61,970
29-May	3	223	322	57,997	3,426	32	62,003
30-May	3	219	339	58,005	3,429	33	62,028
31-May	2	221	336	58,021	3,438	33	62,051
1-Jun	2	215	338	58,037	3,444	33	62,069
2-Jun	2	214	328	58,069	3,454	33	62,100
3-Jun	2	229	324	58,093	3,464	33	62,145

⁹ Community Care Facilities (i.e. D'Resort, EXPO, Tuas South), Private Hospitals (i.e. Concord International Hospital, Mt Elizabeth Hospital, Gleneagles Hospital, Mt Elizabeth Novena Hospital, Parkway East Hospital), Community Hospitals (i.e. Bright Vision Hospital) and other care facilities.

(3) Number of Stay Home Notice (SHN) Issued

Figure 4.1: Daily Number of SHN issued (19 Feb 2020 to 2 June 2021)

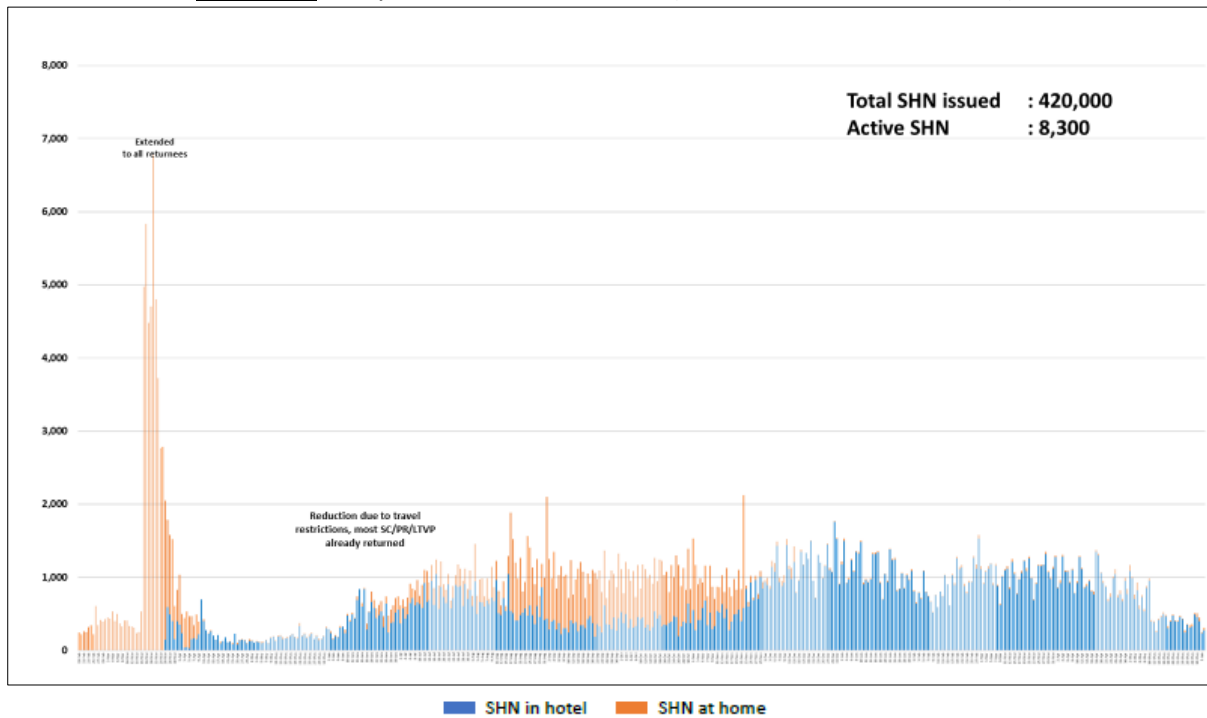
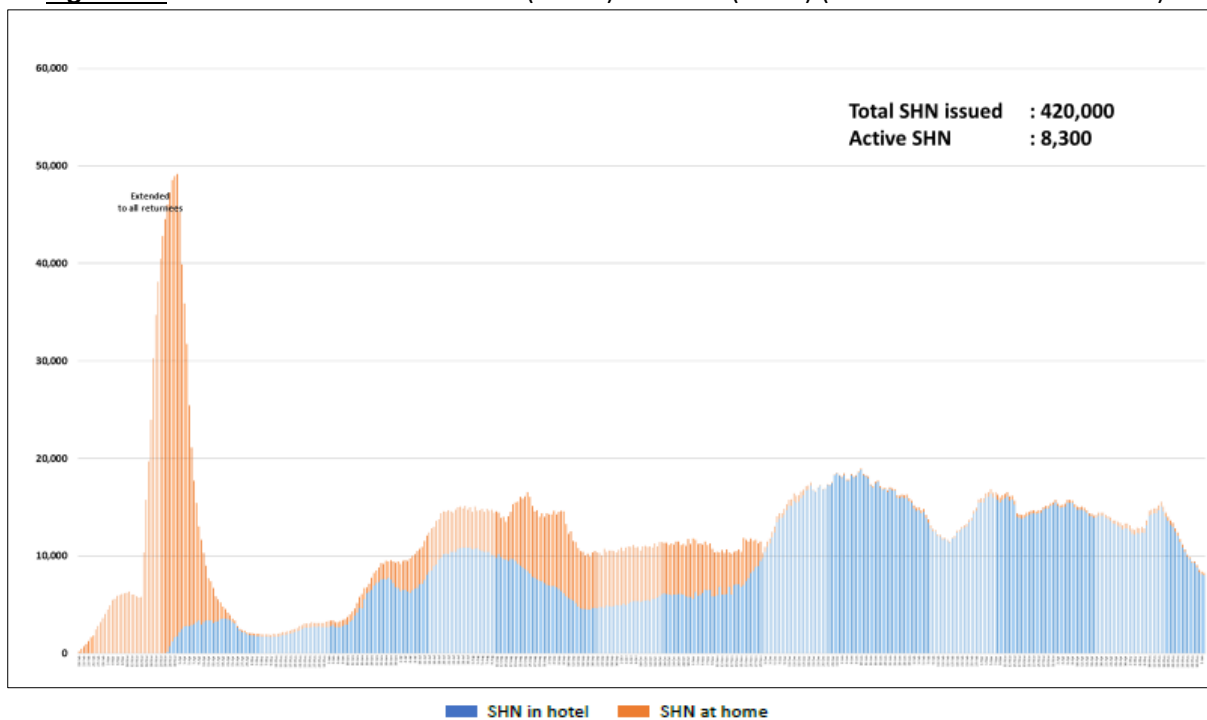


Figure 4.2: Active Stock Number of SHN (Home) and SHN (Hotel) (19 Feb 2020 to 2 June 2021)



(4) Number of Quarantine Orders (QO) Generated

Figure 5.1: Daily Number of QOs Generated

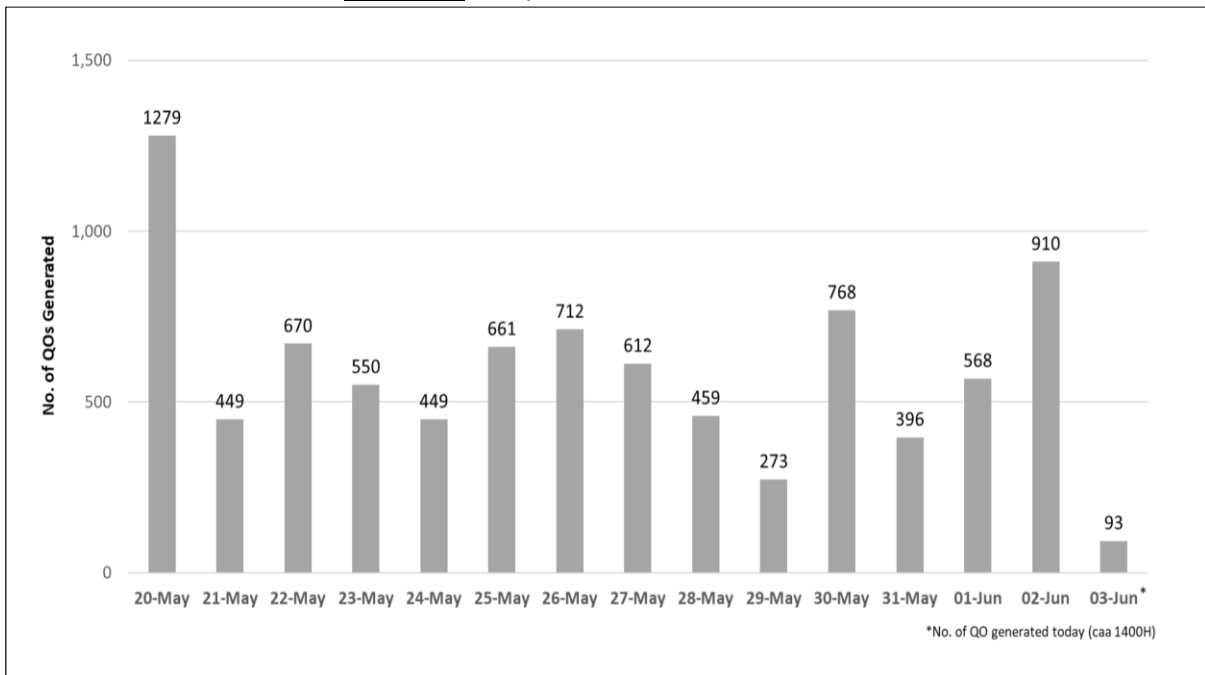


Figure 5.2: Active Number of Persons Under Quarantine (PUQs)

