

**17 June 2021 Daily Report on COVID-19****(1) Number of COVID-19 Cases****Figure 1.1:** Breakdown of New Confirmed Cases in the Past 14 Days

Press Release Date	Imported			Non-Imported Cases														All Cases
				Community Cases								Dorm Residents <sup>1</sup>						
	Isolated before Detection	Detected through Surveillance <sup>2</sup>	Sub-Total	Isolated before Detection <sup>3</sup>				Detected through Surveillance <sup>4</sup>				Sub-Total	Incidence Rate <sup>5</sup> (per 100,000)	Isolated before Detection <sup>3</sup>	Detected through Surveillance <sup>4</sup>	No. of Cases	Incidence Rate <sup>5</sup> (per 100,000)	
				SC/PR	G or F	Visitor	Sub-Total	SC/PR	G or F	Visitor	Sub-Total							
Before 4-Jun	4,325	329	4,654	658	358	6	1,022	1,206	728	11	1,945	2,967	-	54,524		54,524	-	62,145
4-Jun	6	0	6	4	1	0	5	2	0	0	2	7	0.13	0	0	0	0	13
5-Jun	5	0	5	7	5	1	13	0	0	0	0	13	0.24	0	0	0	0	18
6-Jun	14	0	14	3	2	0	5	1	0	0	1	6	0.11	0	0	0	0	20
7-Jun	9	0	9	5	0	0	5	0	0	0	0	5	0.093	0	0	0	0	14
8-Jun	5	0	5	1	0	0	1	1	1	0	2	3	0.056	0	1	1	0.31	9
9-Jun	2	0	2	0	1	0	1	0	1	0	1	2	0.037	0	0	0	0	4
10-Jun	9	0	9	1	0	0	1	1	2	0	3	4	0.074	0	0	0	0	13
11-Jun	6	0	6	0	0	0	0	2	1	0	3	3	0.056	0	0	0	0	9
12-Jun	9	0	9	0	3	0	3	3	3	0	6	9	0.17	0	0	0	0	18
13-Jun	3	0	3	4	1	0	5	3	2	0	5	10	0.19	0	0	0	0	13
14-Jun	6	0	6	7	5	0	12	5	0	1	6	18	0.33	1	0	1	0.31	25
15-Jun	0	0	0	3	2	0	5	7	2	0	9	14	0.26	0	0	0	0	14
16-Jun	5	0	5	9	1	0	10	6	3	0	9	19	0.35	0	0	0	0	24
17-Jun	7	0	7	10	2	2	14	6	0	0	6	20	0.37	0	0	0	0	27
Total since start of outbreak	4,411	329	4,740	712	381	9	1,102	1,243	743	12	1,998	3,100	-	54,526		54,526	-	62,366
Population at risk												5,381,000				323,000		5,704,000
Prevalence												0.06%				16.88%		1.09%

**Notes**

<sup>1</sup> Includes PRs and visitors residing in dorms. Breakdown of dorm cases into those detected through surveillance and those isolated before detection is not available before 24 Aug.

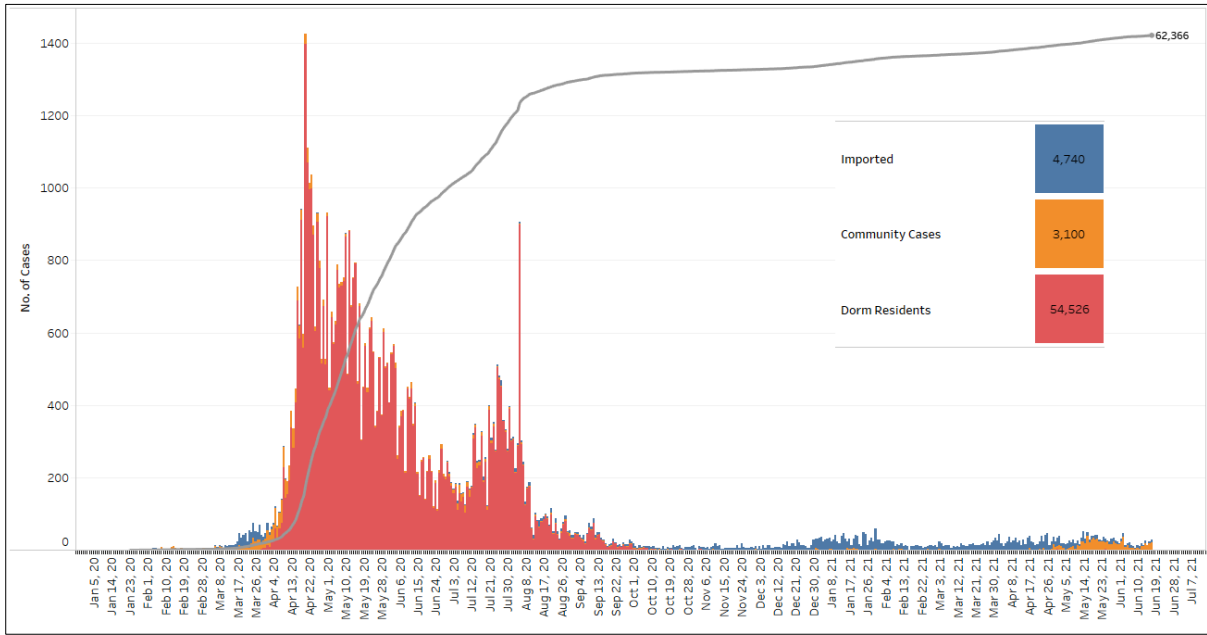
<sup>2</sup> 272 cases were reported before early Apr, and constitute the 1<sup>st</sup> wave of imported cases.

<sup>3</sup> Cases who were already quarantined and tested during quarantine to determine their status.

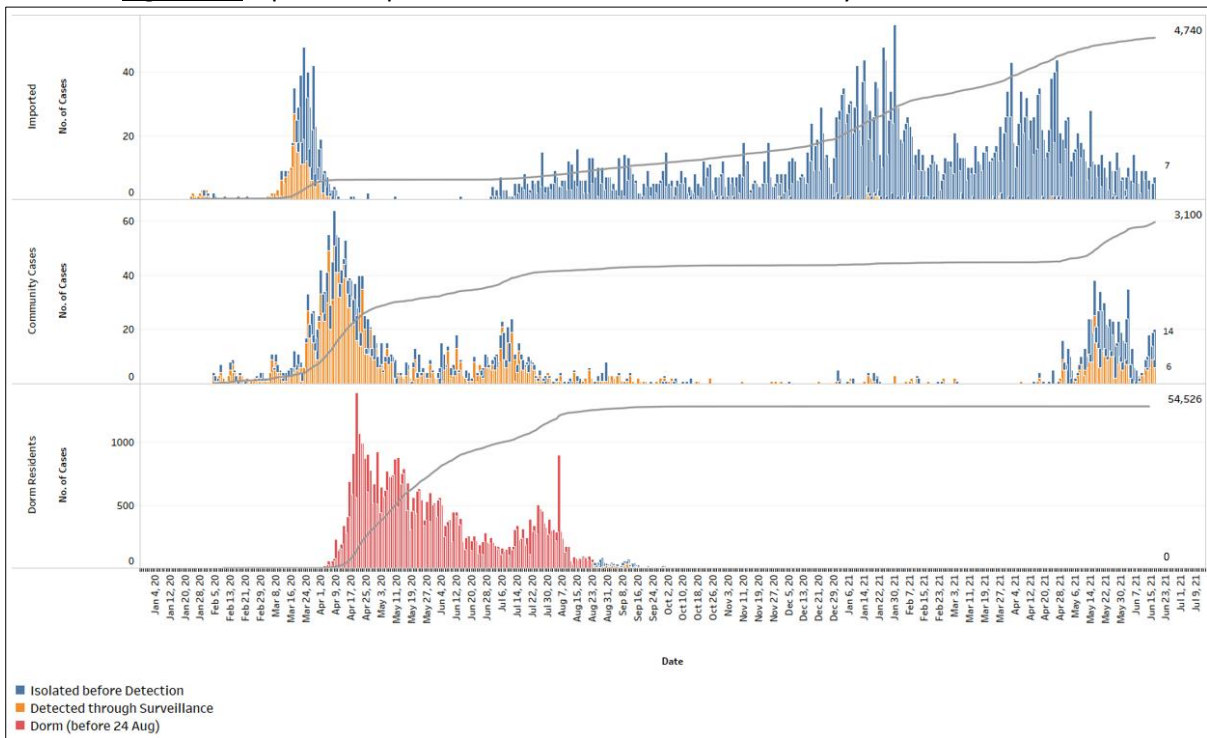
<sup>4</sup> Cases who were identified through surveillance testing, such as the bi-weekly Rostered Routine Testing (RRT) of at-risk workers and testing of those with Acute Respiratory Illness (ARI) symptoms.

<sup>5</sup> Incidence rates are rounded to two significant figures.

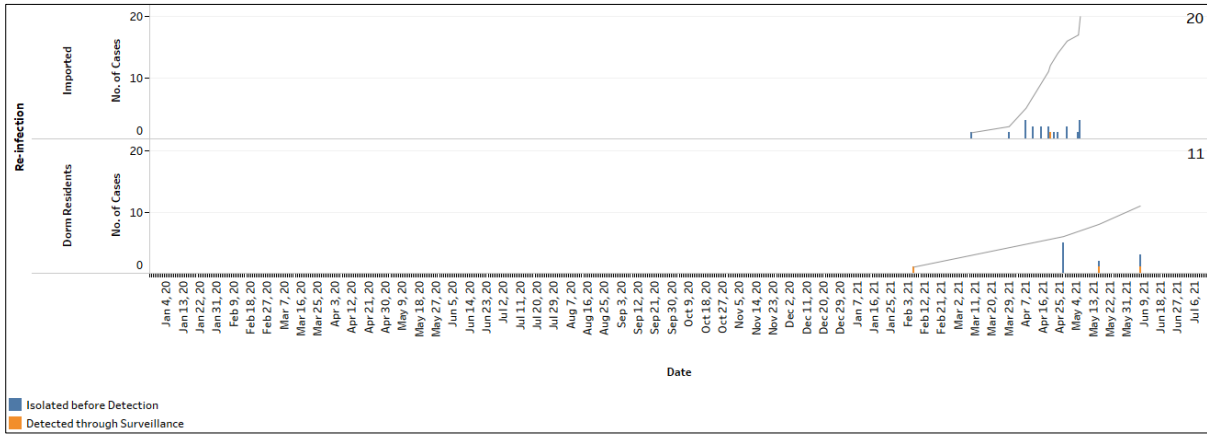
**Figure 1.2:** Epidemic Curve of the COVID-19 Outbreak by Press Release Date



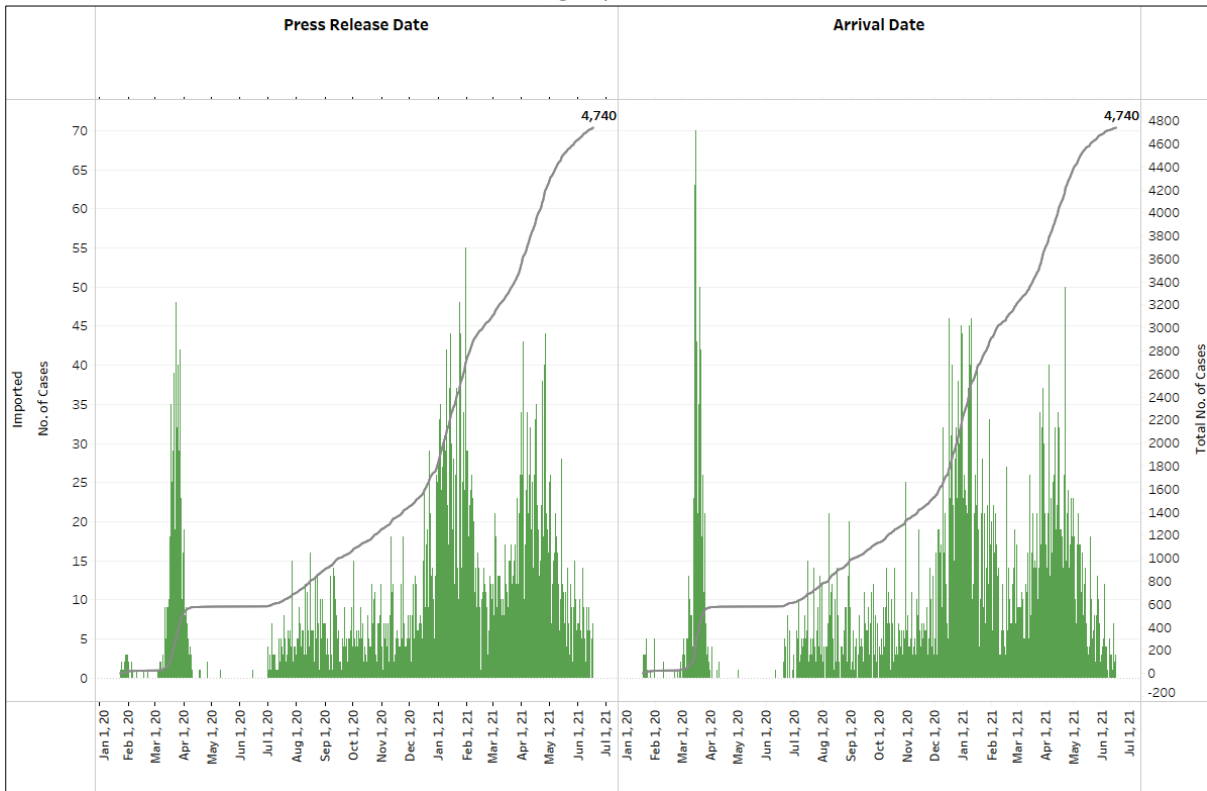
**Figure 1.3:** Epidemic Split Curve of the COVID-19 Outbreak by Press Release Date



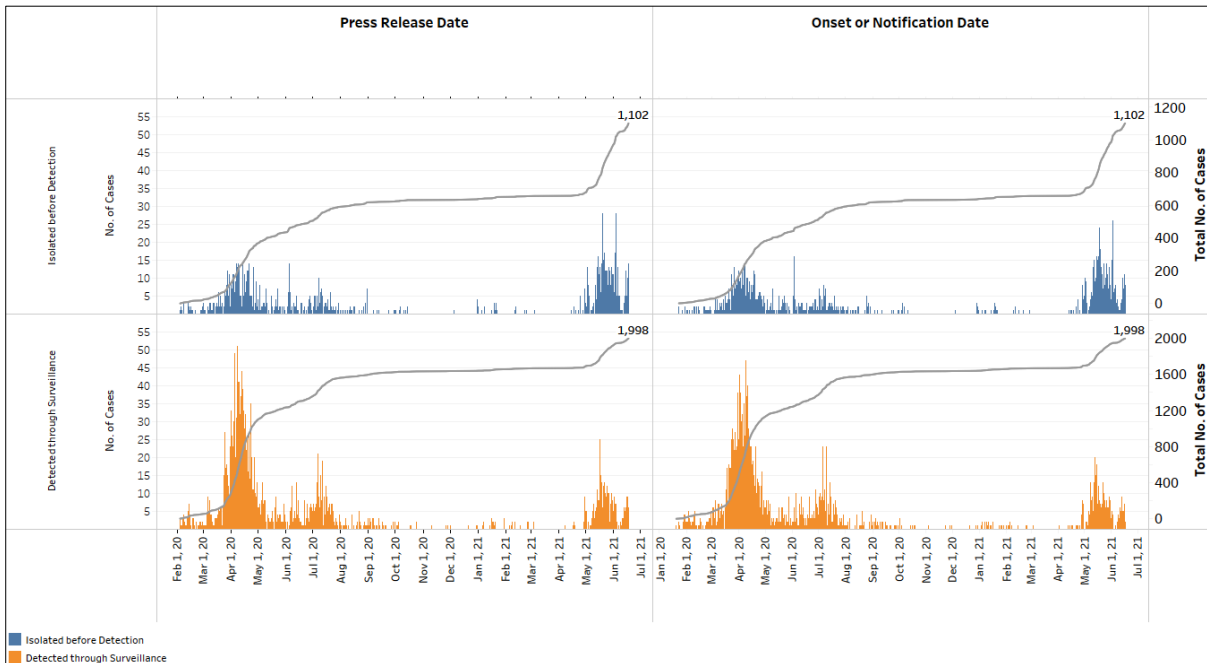
**Figure 1.4:** Epidemic Curve of COVID-19 Re-infections by Press Release Date



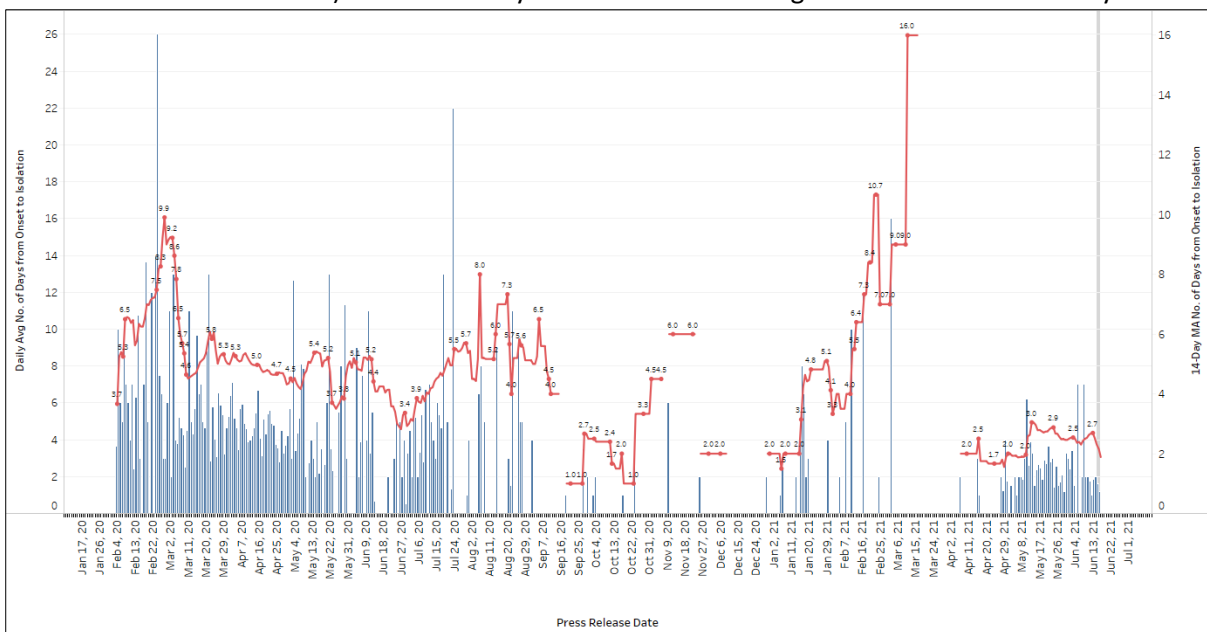
**Figure 1.5:** Epidemic Curve of Imported Cases by Press Release Date (left panel) and Arrival Date (right panel)



**Figure 1.6:** Epidemic Curve of Community Cases by Press Release Date (left panel) and by Symptom Onset or Notification Date<sup>6</sup> (right panel)



**Figure 1.7:** Average Number of Days from Onset of Symptoms to Isolation (QO, hospital admission or notification to MOH) for Community Cases Detected through Surveillance in Each Day



Line represents the 14-day moving average; Bar represents the daily average<sup>7</sup>

<sup>6</sup> Date of notification was used for cases that did not display any symptoms. The numbers with onset in the past few days may see an increase as more cases are notified.

<sup>7</sup> Area in grey demarcates data points for the past 3 days where some cases may still be pending epidemiological investigation. The bar graph shows the daily average number of days from symptoms onset to isolation, while the line graph shows the moving average for the past 14 days. Both graphs exclude cases with no onset date (asymptomatic) in the computation of the average. Community cases with symptoms who are isolated on the same day that symptoms occurred would have an

**Figure 1.8:** Weekly Reclassifications of Previously Reported Cases (*next update will be on 21 Jun*)

	Imported	Community Linked	Community Unlinked	Dorm Residents	Total
Total number of cases as at 07 Jun	4,688	2,110	888	54,524	62,210
Cases reported 08 Jun - 14 Jun	40	33	16	2	91
Net reclassifications of previously reported cases, incorporated 08 Jun - 14 Jun	0	3	-3	0	0
Total number of cases as at 14 Jun	4,728	2,146	901	54,526	62,301

Case Number	PR date	Occupation	Link Reclassification	Rationale for Link Reclassification
63160	16 May 21	Food Processing Worker	Community Unlinked → Community Linked (Cluster 63160)	Case 63300 is the likely primary case of cluster 63160. He visited White Sands mall during the same period as other confirmed cases during their infectious period. Cases are phylogenetically linked to other cases linked to White Sands
63300	4 May 21	Unemployed	Community Linked (Cluster 63160) → Community Linked (White Sands)	
63271	16 May 21	Warehouse Assistant	Community Unlinked → Community Linked (Cluster 63271)	Case 63278 is the likely primary case of cluster 63271. He visited White Sands mall during the same period as other confirmed cases during their infectious period. Cases are phylogenetically linked to other cases linked to White Sands
63278	16 May 21	Financial Consultant	Community Linked (Cluster 63271) → Community Linked (White Sands)	

isolation time of 0. There is a gap in the line graph from 16 to 18 Sep as there are no symptomatic cases in the preceding 14 days.

Data updated as at 17 June 2021, 1200 hrs

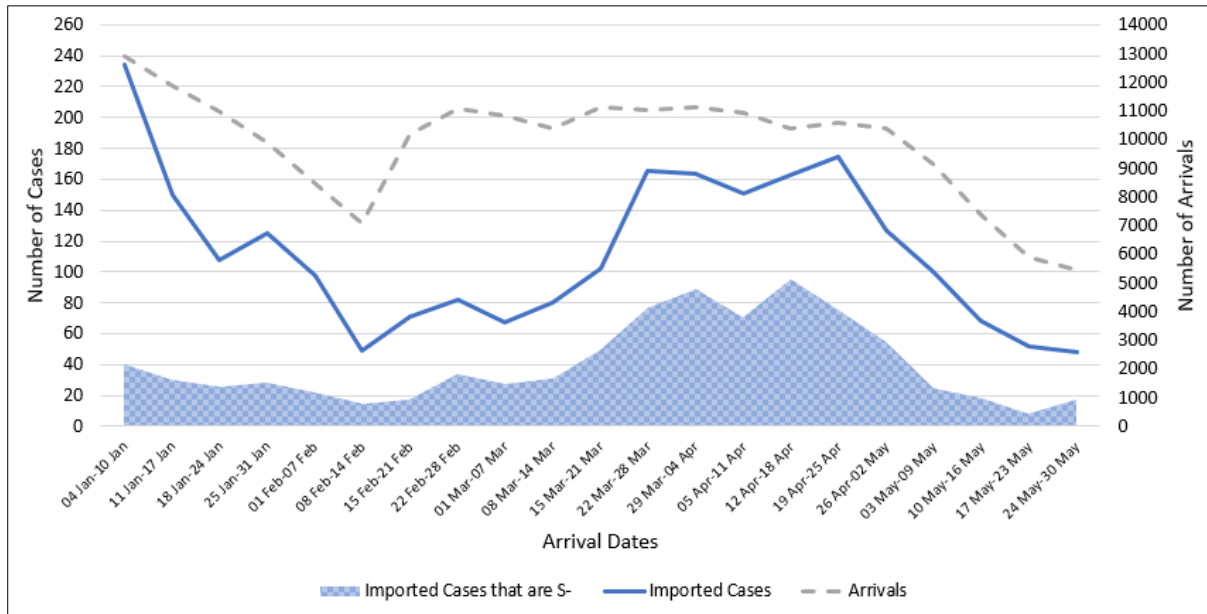
Case Number	PR date	Occupation	Link Reclassification	Rationale for Link Reclassification
63534	21 May 21	Delivery Man	Community Unlinked → Community Linked (Cluster 63534)	Case 63534 is the likely primary case of cluster 63569. He visited White Sands mall during the same period as other confirmed cases during their infectious period. Cases are phylogenetically linked to other cases linked to White Sands
63569	22 May 21	Delivery Man	Community Linked (Cluster 63534) → Community Linked (White Sands)	

(2) Imported COVID 19 Cases

**Figure 2.1:** Serology and Symptom Status of Imported Cases Reported from 4 Jun to 10 Jun

Symptoms	S+	S-	Not Serology Tested	Pending Serology Result	Total No. of Cases
Asymptomatic	38	8	0	1	47
Symptomatic	1	2	0	0	3
<b>Total</b>	<b>39</b>	<b>10</b>	<b>0</b>	<b>1</b>	<b>50</b>

**Figure 2.2:** Weekly Total Number of Imported Cases, Imported Cases that are S- and Arrivals from 4 Jan 21 to 30 May 21 (next update will be on 21 June)<sup>8</sup>



<sup>8</sup> Data from the past 2 weeks are excluded as cases on SHN who arrived in the past 2 weeks may not have their test results yet. "Imported Cases that are S-" comprises imported cases who are (a) serology negative; or (b) not tested for serology.

**(3) Number of COVID 19 Cases in Hospitals and Community Care Facilities****Figure 3.1:** Summary of Confirmed Cases by Status in the Past 14 Days

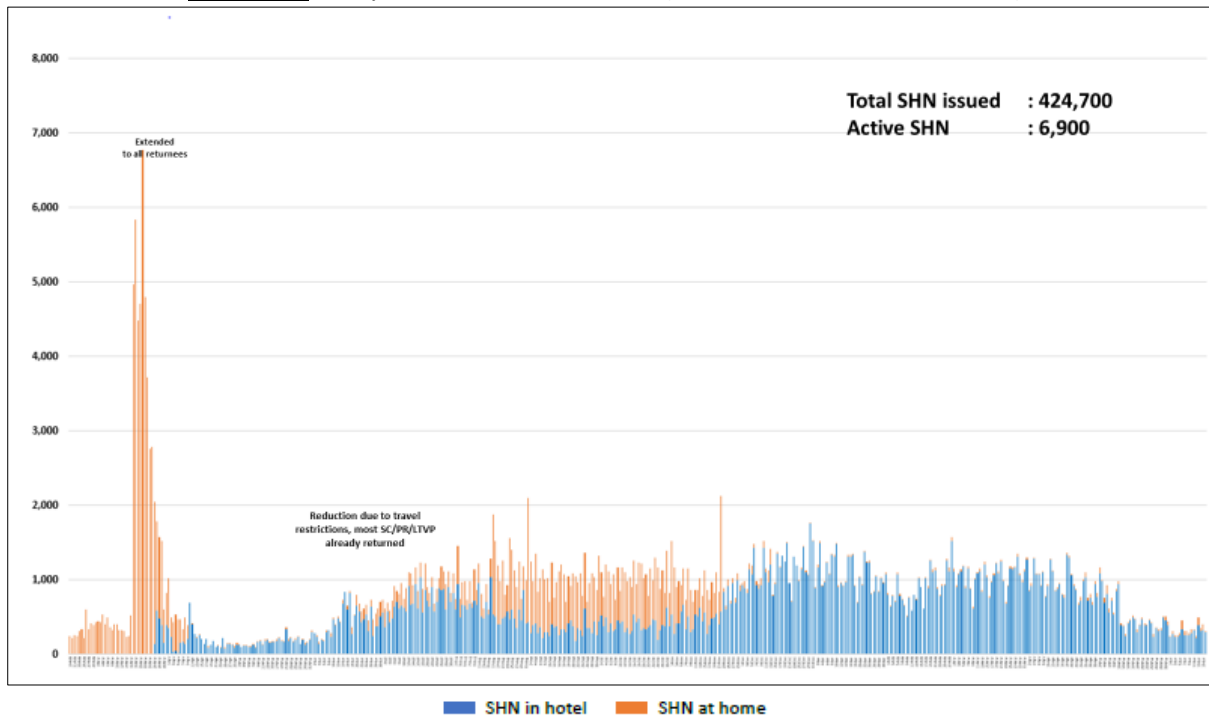
Press Release Date	Currently Admitted in Hospitals		In Care Facilities <sup>9</sup>	Total Recovered		Total Demised	Total
	ICU	General Wards		Completed Isolation	Discharged from Hospital		
4-Jun	2	227	316	58,110	3,470	33	<b>62,158</b>
5-Jun	2	205	323	58,133	3,480	33	<b>62,176</b>
6-Jun	2	205	321	58,145	3,490	33	<b>62,196</b>
7-Jun	2	202	313	58,166	3,494	33	<b>62,210</b>
8-Jun	2	185	296	58,197	3,505	34	<b>62,219</b>
9-Jun	1	157	291	58,231	3,509	34	<b>62,223</b>
10-Jun	1	149	287	58,251	3,514	34	<b>62,236</b>
11-Jun	1	132	279	58,272	3,527	34	<b>62,245</b>
12-Jun	1	124	266	58,301	3,537	34	<b>62,263</b>
13-Jun	1	129	243	58,323	3,546	34	<b>62,276</b>
14-Jun	2	136	235	58,341	3,553	34	<b>62,301</b>
15-Jun	2	135	233	58,351	3,560	34	<b>62,315</b>
16-Jun	1	145	228	58,366	3,565	34	<b>62,339</b>
17-Jun	1	150	221	58,388	3,572	34	<b>62,366</b>

<sup>9</sup> Community Care Facilities (i.e. D'Resort, EXPO, Tuas South), Private Hospitals (i.e. Concord International Hospital, Mt Elizabeth Hospital, Gleneagles Hospital, Mt Elizabeth Novena Hospital, Parkway East Hospital), Community Hospitals (i.e. Bright Vision Hospital) and other care facilities.

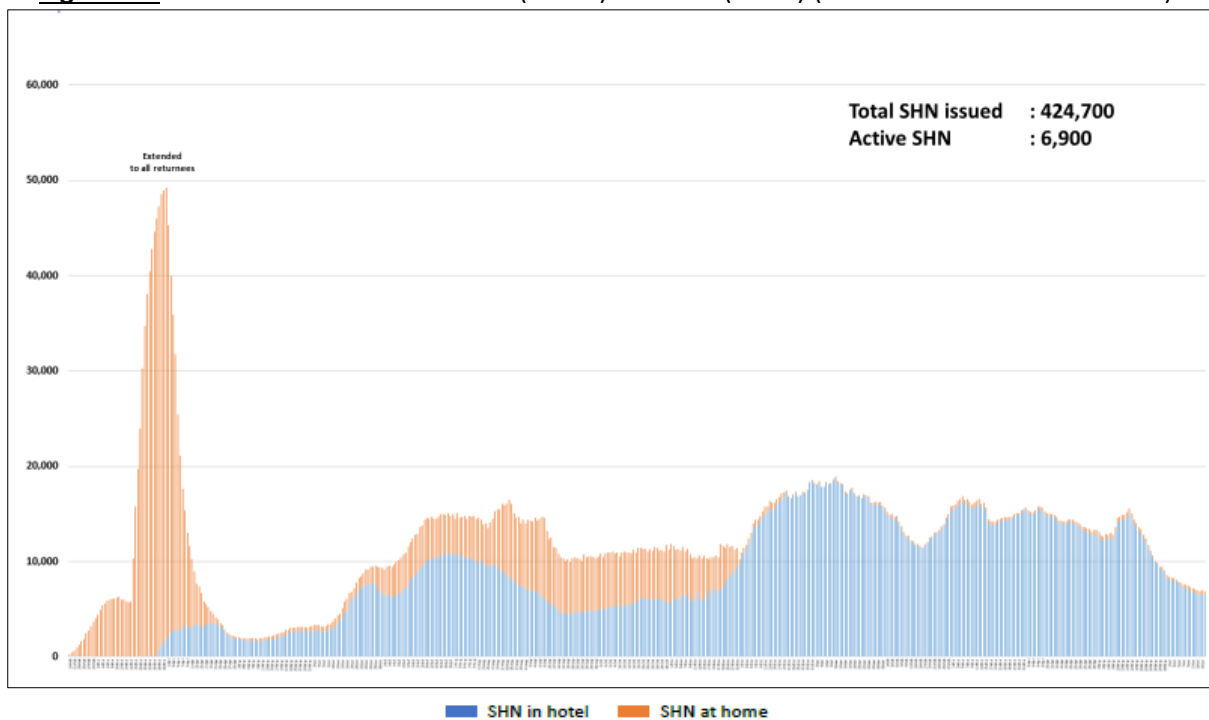


#### (4) Number of Stay Home Notice (SHN) Issued

**Figure 4.1:** Daily Number of SHN issued (19 Feb 2020 to 16 June 2021)

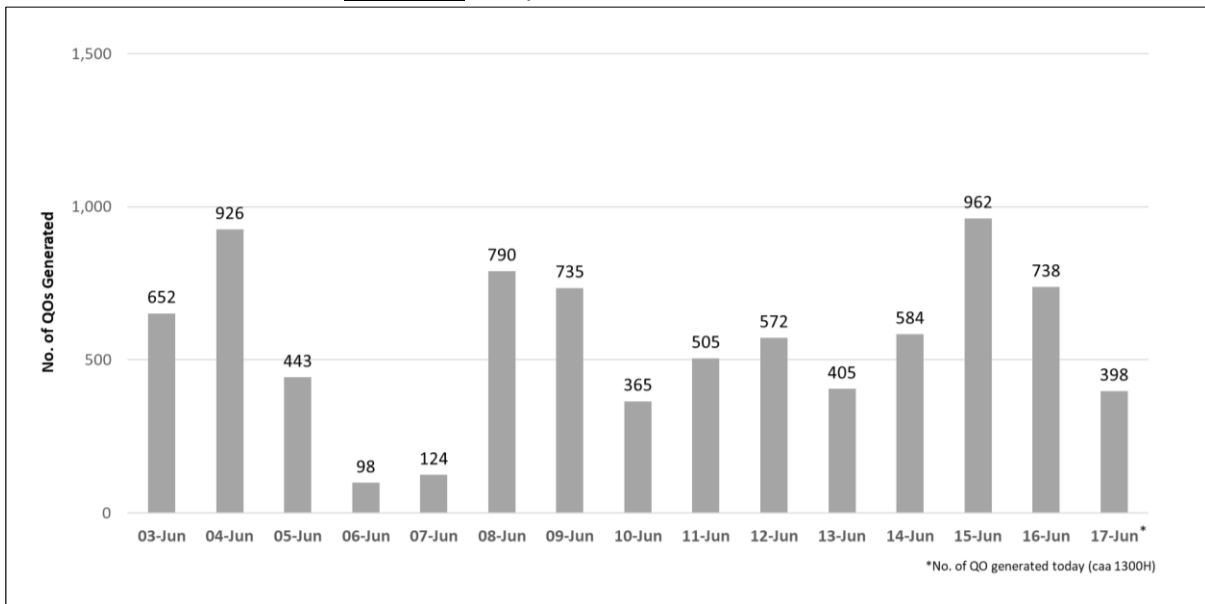


**Figure 4.2:** Active Stock Number of SHN (Home) and SHN (Hotel) (19 Feb 2020 to 16 June 2021)



**(5) Number of Quarantine Orders (QO) Generated**

**Figure 5.1:** Daily Number of QOs Generated



**Figure 5.2:** Active Number of Persons Under Quarantine (PUQs)

