

1 July 2021 Daily Report on COVID-19**(1) Number of COVID-19 Cases****Figure 1.1:** Breakdown of New Confirmed Cases in the Past 14 Days

Press Release Date	Imported			Non-Imported Cases														All Cases
				Community Cases								Dorm Residents ¹						
	Isolated before Detection	Detected through Surveillance ²	Sub-Total	Isolated before Detection ³				Detected through Surveillance ⁴				Sub-Total	Incidence Rate ⁵ (per 100,000)	Isolated before Detection ³	Detected through Surveillance ⁴	No. of Cases	Incidence Rate ⁵ (per 100,000)	
				SC/PR	G or F	Visitor	Sub-Total	SC/PR	G or F	Visitor	Sub-Total							
Before 18-Jun	4,411	329	4,740	712	381	9	1,102	1,243	743	12	1,998	3,100	-	54,526		54,526	-	62,366
18-Jun	2	0	2	5	0	0	5	7	2	0	9	14	0.26	0	0	0	0	16
19-Jun	7	0	7	6	1	0	7	4	3	0	7	14	0.26	0	0	0	0	21
20-Jun	2	0	2	2	1	0	3	5	1	0	6	9	0.17	0	0	0	0	11
21-Jun	3	0	3	3	2	0	5	5	3	0	8	13	0.24	0	0	0	0	16
22-Jun	3	0	3	3	0	0	3	9	3	0	12	15	0.28	0	0	0	0	18
23-Jun	9	0	9	7	1	0	8	5	0	0	5	13	0.24	0	0	0	0	22
24-Jun	9	0	9	11	0	0	11	3	0	0	3	14	0.26	0	0	0	0	23
25-Jun	5	0	5	2	2	0	4	9	2	0	11	15	0.28	0	0	0	0	20
26-Jun	4	0	4	5	0	0	5	6	2	0	8	13	0.24	0	0	0	0	17
27-Jun	2	0	2	10	0	0	10	2	0	0	2	12	0.22	0	0	0	0	14
28-Jun	5	0	5	4	0	0	4	0	0	0	0	4	0.074	0	0	0	0	9
29-Jun	5	0	5	3	1	0	4	1	0	0	1	5	0.093	0	0	0	0	10
30-Jun	11	0	11	4	1	0	5	0	0	0	0	5	0.093	0	0	0	0	16
1-Jul	6	0	6	3	0	0	3	1	0	0	1	4	0.074	0	0	0	0	10
Total since start of outbreak	4,484	329	4,813	780	390	9	1,179	1,300	759	12	2,071	3,250	-	54,526		54,526	-	62,589
Population at risk												5,381,000				323,000		5,704,000
Prevalence												0.06%				16.88%		1.10%

Notes

¹ Includes PRs and visitors residing in dorms. Breakdown of dorm cases into those detected through surveillance and those isolated before detection is not available before 24 Aug.

² 272 cases were reported before early Apr, and constitute the 1st wave of imported cases.

³ Cases who were already quarantined and tested during quarantine to determine their status.

⁴ Cases who were identified through surveillance testing, such as the bi-weekly Rostered Routine Testing (RRT) of at-risk workers and testing of those with Acute Respiratory Illness (ARI) symptoms.

⁵ Incidence rates are rounded to two significant figures.

Figure 1.2: Epidemic Curve of the COVID-19 Outbreak by Press Release Date

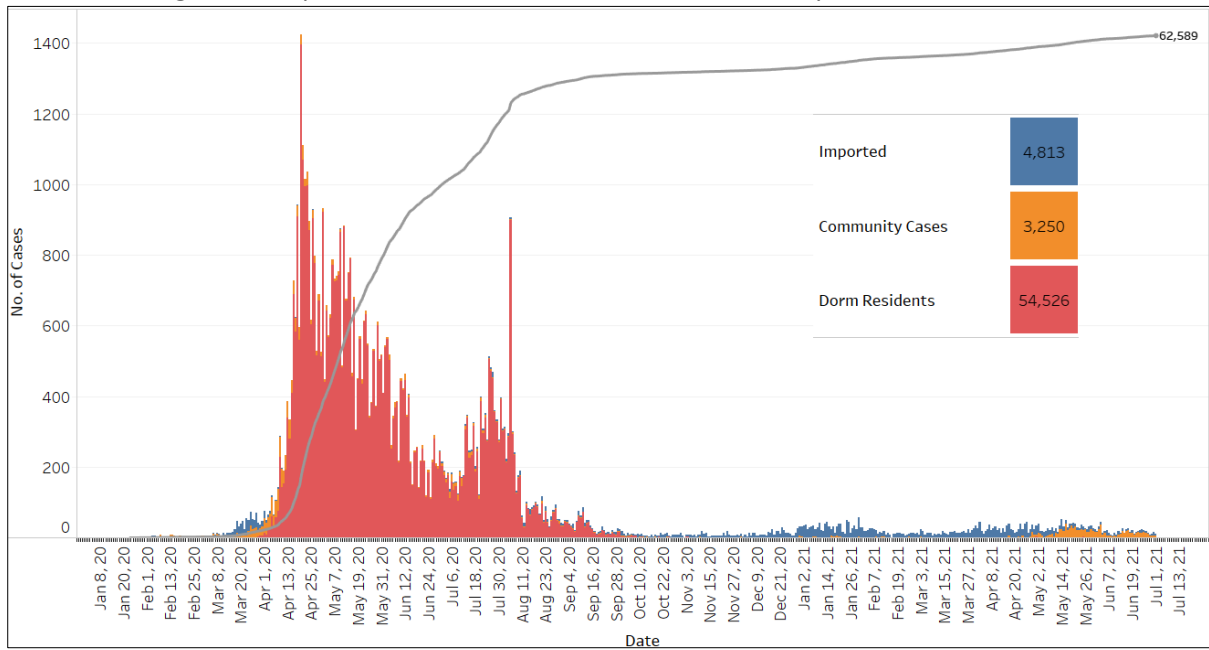


Figure 1.3: Epidemic Split Curve of the COVID-19 Outbreak by Press Release Date

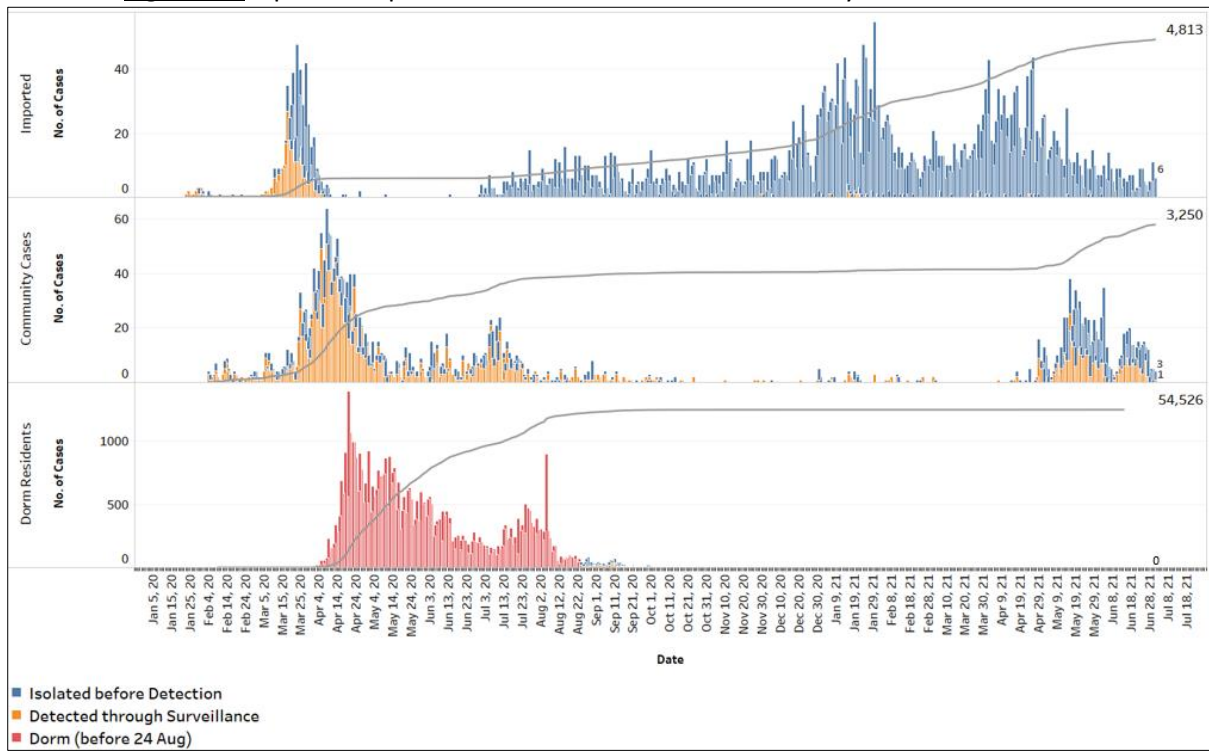


Figure 1.4: Epidemic Curve of COVID-19 Re-infections by Press Release Date

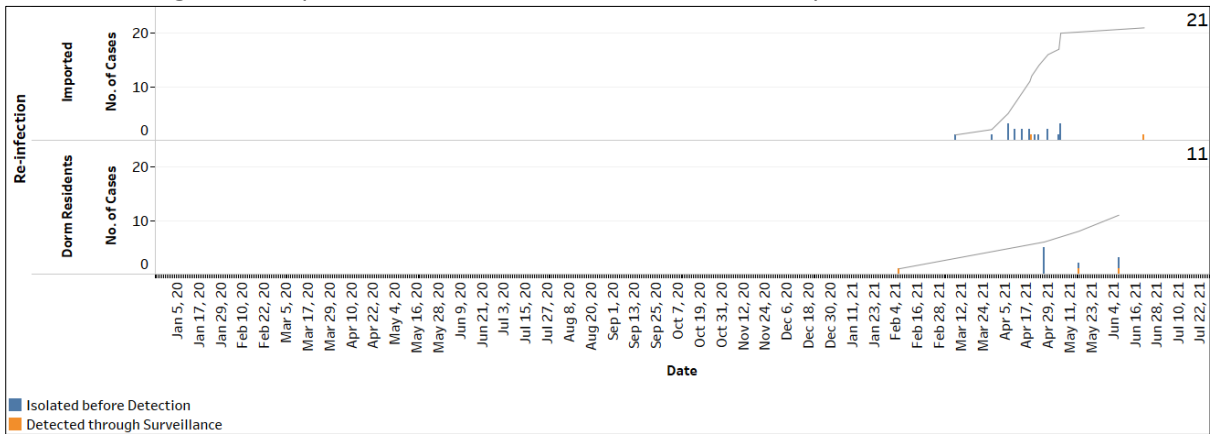


Figure 1.5: Epidemic Curve of Imported Cases by Press Release Date (left panel) and Arrival Date (right panel)

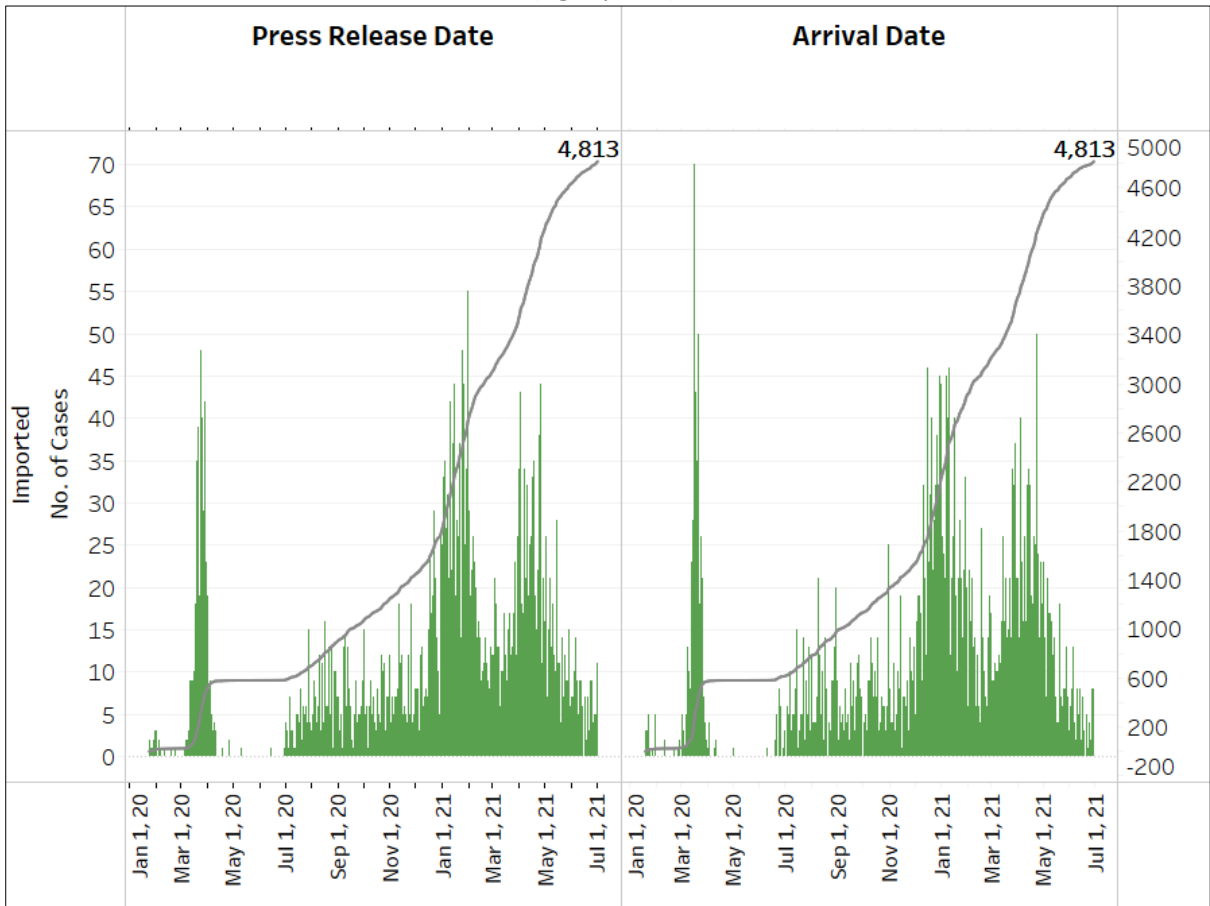


Figure 1.6: Epidemic Curve of Community Cases by Press Release Date (left panel) and by Symptom Onset or Notification Date⁶ (right panel)

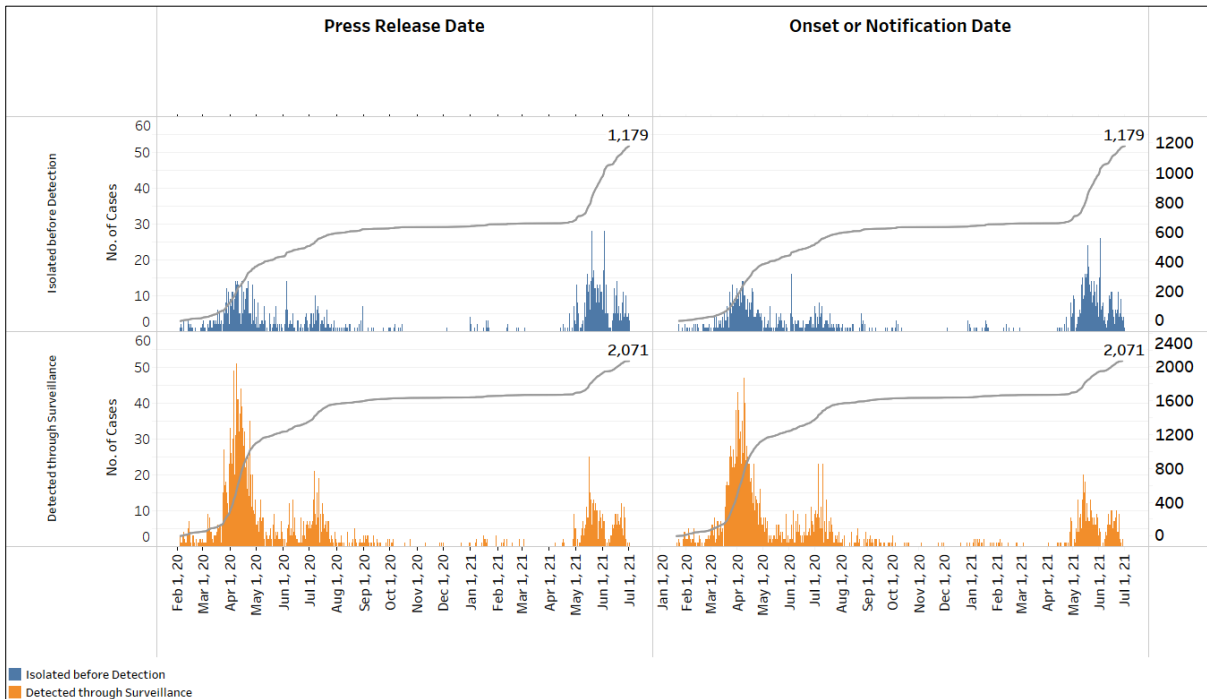
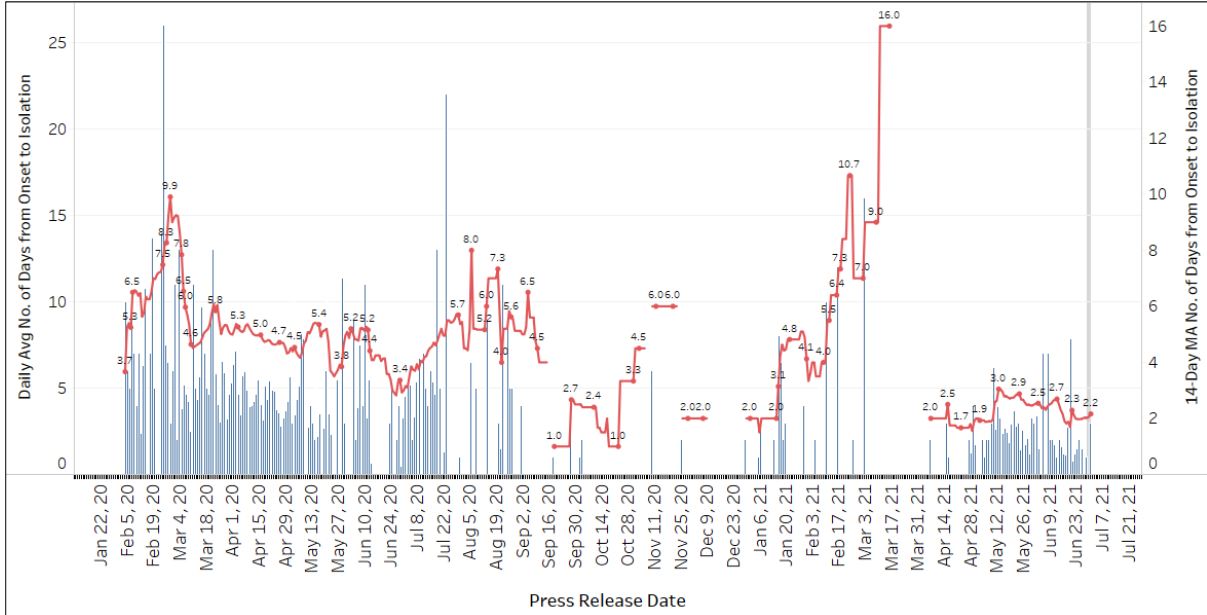


Figure 1.7: Average Number of Days from Onset of Symptoms to Isolation (QO, hospital admission or notification to MOH) for Community Cases Detected through Surveillance in Each Day. Line represents the 14-day moving average; Bar represents the daily average⁷



⁶ Date of notification was used for cases that did not display any symptoms. The numbers with onset in the past few days may see an increase as more cases are notified.

⁷ Area in grey demarcates data points for the past 3 days where some cases may still be pending epidemiological investigation. The bar graph shows the daily average number of days from symptoms onset to isolation, while the line graph shows the moving average for the past 14 days. Both graphs exclude cases with no onset date (asymptomatic) in the computation of the average. Community cases with symptoms who are isolated on the same day that symptoms occurred would have an isolation time of 0. There is a gap in the line graph from 16 to 18 Sep as there are no symptomatic cases in the preceding 14 days.

Figure 1.8: Weekly Reclassifications of Previously Reported Cases (next update will be on 5 Jul)

	Imported	Community Linked	Community Unlinked	Dorm Residents	Total
Total number of cases as at 21 Jun	4,754	2,233	917	54,526	62,430
Cases reported 22 Jun - 28 Jun	37	68	18	0	123
Net reclassifications of previously reported cases, incorporated 22 Jun - 28 Jun	0	15	-15	0	0
Total number of cases as at 28 Jun	4,791	2,316	920	54,526	62,553

Case Number	PR date	Occupation	Link Reclassification	Rationale for Link Reclassification
63660	24 May 21	Property Agent	Community Unlinked → Community Linked (745 Yishun Street 72)	Case is the index of Cluster 63660. She is linked to the cases staying at 745 Yishun Street 72
63809	28 May 21	Retiree	Community Unlinked → Community Linked (Cluster 63320)	Case is phylogenetically linked to Cluster 63320
63931	1 Jun 21	Retiree	Community Unlinked → Community Linked (Case 63799)	Case is phylogenetically linked to Case 63799
63973	2 Jun 21	Retiree	Community Unlinked → Community Linked (745 Yishun Street 72)	Case is the index of Cluster 63973. She is linked to the cases staying at 745 Yishun Street 72
64135	11 Jun 21	Promoter	Community Unlinked → Community Linked (Ion Orchard)	Case is the index case of her cluster and is phylogenetically linked to other cases linked to Ion Orchard
64159	12 Jun 21	Student	Community Unlinked → Community Linked (Cluster 64184)	Case is phylogenetically linked to Cluster 64184
64174	12 Jun 21	Cleaner	Community Unlinked → Community Linked (Cluster 64112)	Case is phylogenetically linked to the index case of Cluster 64112
64183	12 Jun 21	Landscape Gardener	Community Unlinked → Community Linked (Cluster 64132)	Case is phylogenetically linked to Cluster 64132
64233	15 Jun 21	Domestic Worker	Community Unlinked → Community Linked (Ion Orchard)	Case is the index case of her cluster and is phylogenetically linked to other cases linked to Ion Orchard

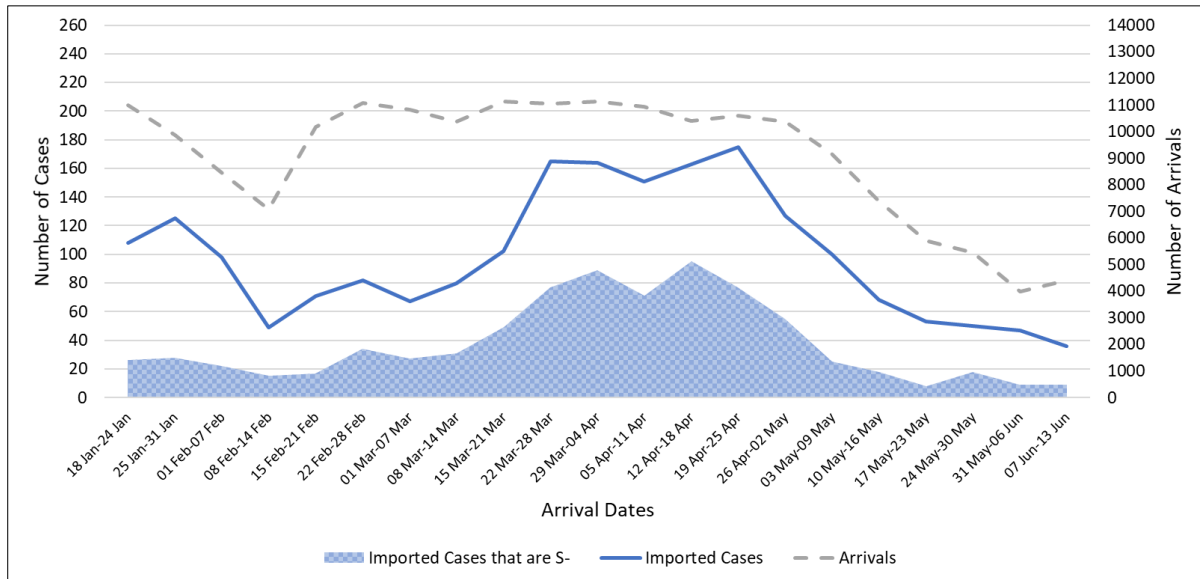
Case Number	PR date	Occupation	Link Reclassification	Rationale for Link Reclassification
64236	15 Jun 21	Homemaker	Community Unlinked → Community Linked (Cluster 64112)	Case is phylogenetically linked to the index case of Cluster 64112
64254	16 Jun 21	Retiree	Community Unlinked → Community Linked (Cluster 64330)	Case is linked to Cluster 64330. She resides at the same location as the index case 64330
64264	16 Jun 21	Foreign Domestic Worker	Community Unlinked → Community Linked (121 Bukit Merah View)	Case is the index of Cluster 64264. She is linked to the cases staying at 121 Bukit Merah View
64378	22 Jun 21	Unemployed	Community Unlinked → Community Linked (Cluster 64310)	Case resides in 105 Henderson Crescent
64386	22 Jun 21	Retiree	Community Unlinked → Community Linked (Cluster 64310)	Case resides in 105 Henderson Crescent
64420	24 Jun 21	Retiree	Community Unlinked → Community Linked (Cluster 64264)	Case is the household contact of case 64449, who is a Persons Under Phone Surveillance (PUPS) contact of case 64264

(2) Imported COVID 19 Cases

Figure 2.1: Serology and Symptom Status of Imported Cases Reported from 18 Jun to 24 Jun

Symptoms	S+	S-	Not Serology Tested	Pending Serology Result	Total No. of Cases
Asymptomatic	25	3	0	1	29
Symptomatic	3	3	0	0	6
Total	28	6	0	1	35

Figure 2.2: Weekly Total Number of Imported Cases, Imported Cases that are S- and Arrivals from 18 Jan 21 to 13 Jun 21 (next update will be on 5 Jul)⁸



⁸ Data from the past 2 weeks are excluded as cases on SHN who arrived in the past 2 weeks may not have their test results yet. "Imported Cases that are S-" comprises imported cases who are (a) serology negative; or (b) not tested for serology.

(3) Number of COVID 19 Cases in Hospitals and Community Care Facilities**Figure 3.1:** Summary of Confirmed Cases by Status in the Past 14 Days

Press Release Date	Currently Admitted in Hospitals		In Care Facilities ⁹	Total Recovered		Total Demised	Total
	ICU	General Wards		Completed Isolation	Discharged from Hospital		
18-Jun	1	151	209	58,409	3,578	34	62,382
19-Jun	1	152	193	58,438	3,585	34	62,403
20-Jun	1	141	196	58,450	3,592	34	62,414
21-Jun	0	134	191	58,459	3,611	35	62,430
22-Jun	2	140	173	58,486	3,612	35	62,448
23-Jun	5	136	181	58,496	3,617	35	62,470
24-Jun	4	132	182	58,517	3,623	35	62,493
25-Jun	4	135	178	58,532	3,629	35	62,513
26-Jun	4	139	170	58,543	3,638	36	62,530
27-Jun	4	144	165	58,555	3,640	36	62,544
28-Jun	3	132	170	58,570	3,642	36	62,553
29-Jun	3	126	179	58,576	3,643	36	62,563
30-Jun	4	129	182	58,584	3,644	36	62,579
1-Jul	3	124	192	58,589	3,645	36	62,589

⁹ Community Care Facilities (i.e. D'Resort, EXPO, Tuas South), Private Hospitals (i.e. Concord International Hospital, Mt Elizabeth Hospital, Gleneagles Hospital, Mt Elizabeth Novena Hospital, Parkway East Hospital), Community Hospitals (i.e. Bright Vision Hospital) and other care facilities.

(4) Number of Stay Home Notice (SHN) Issued

Figure 4.1: Daily Number of SHN issued (19 Feb 2020 to 30 Jun 2021)

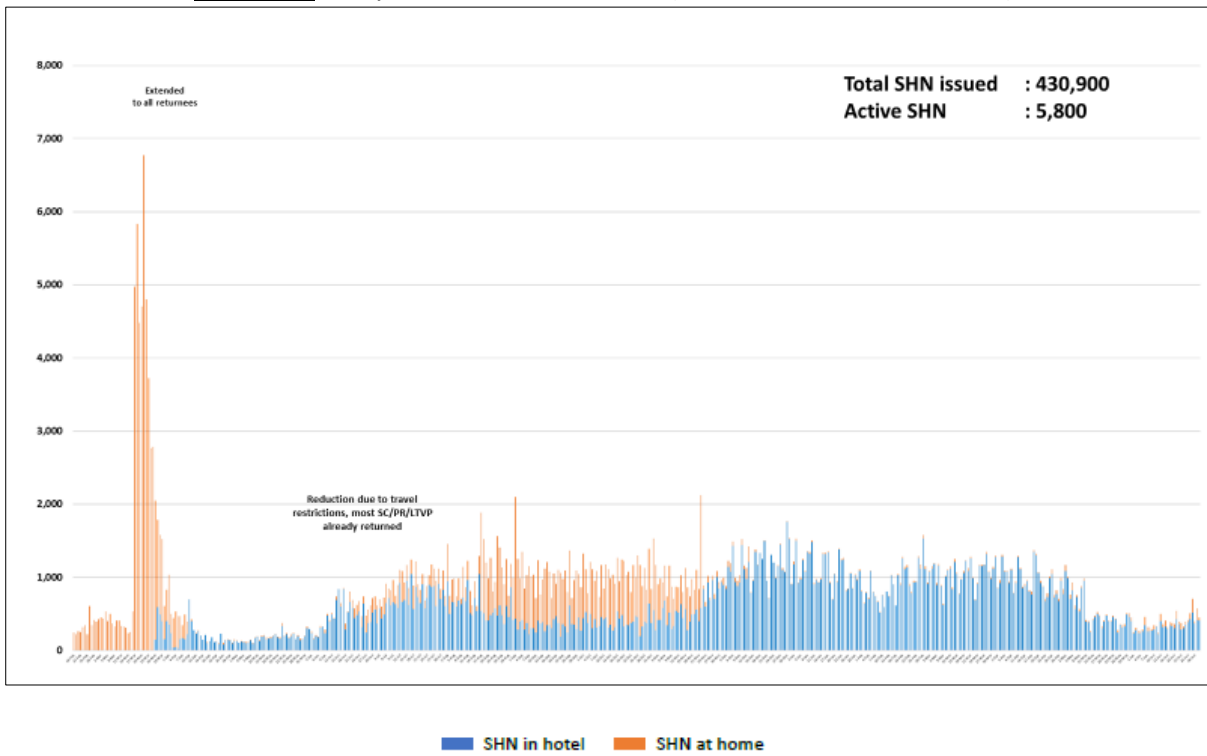
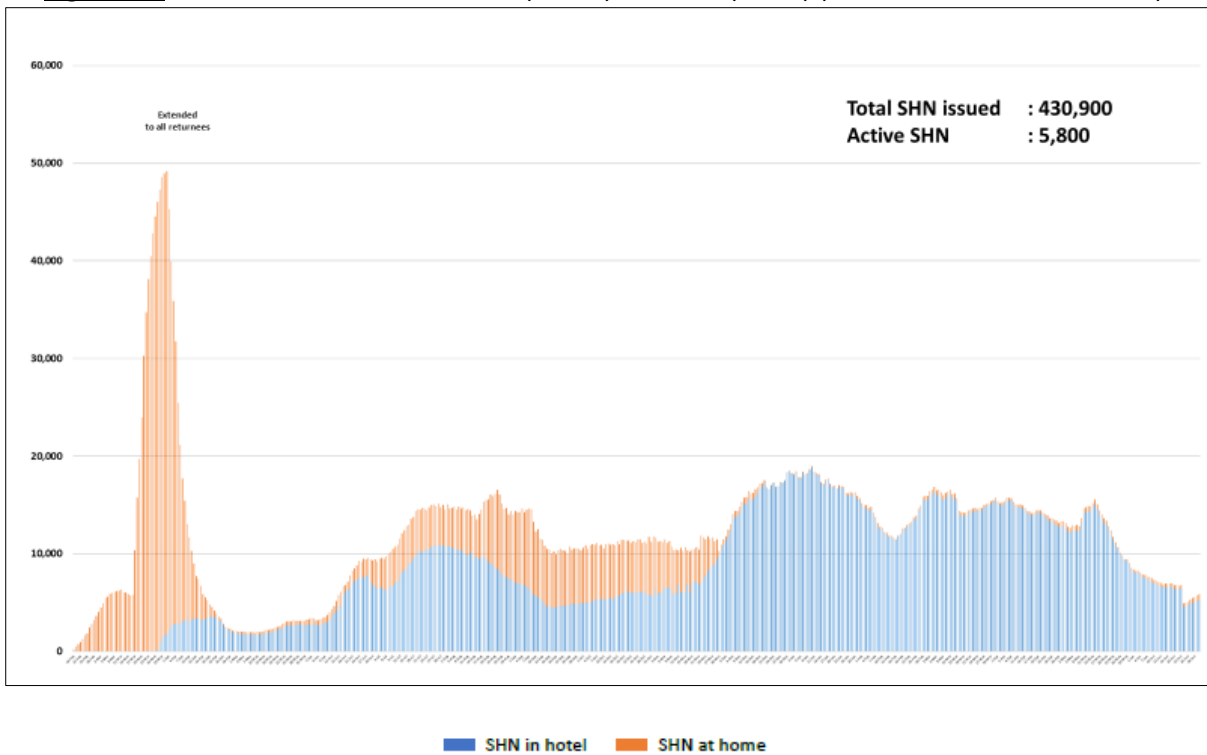


Figure 4.2: Active Stock Number of SHN (Home) and SHN (Hotel) (19 Feb 2020 to 30 Jun 2021)



(5) Number of Quarantine Orders (QO) Generated

Figure 5.1: Daily Number of QOs Generated

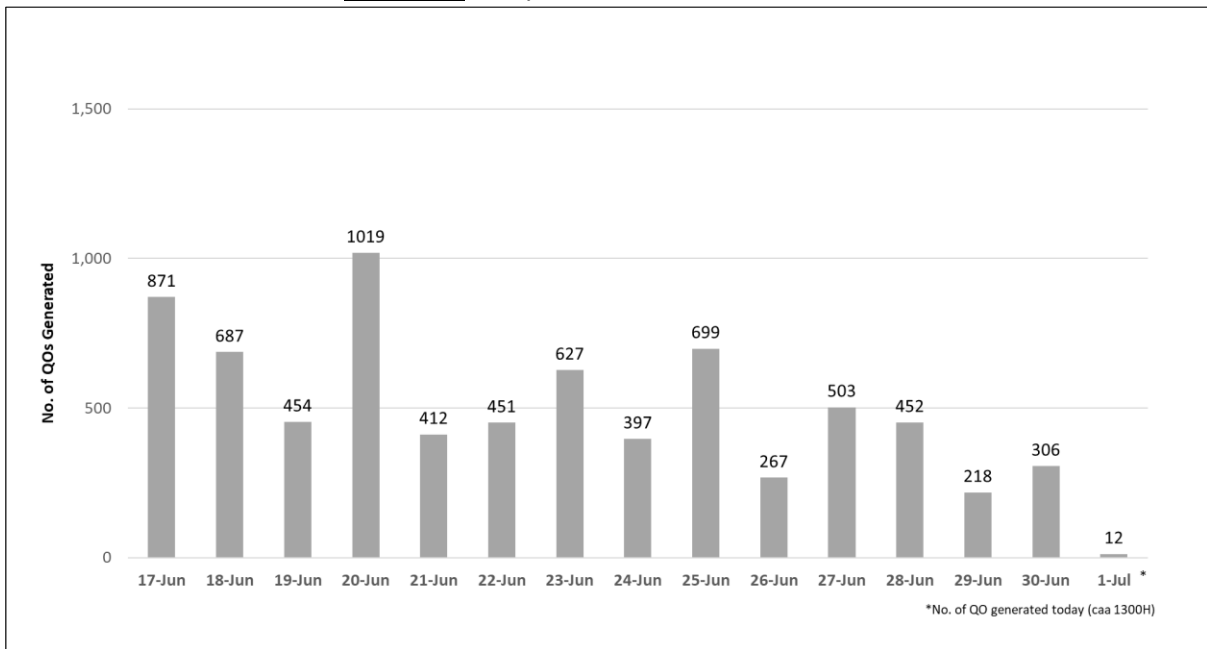


Figure 5.2: Active Number of Persons Under Quarantine (PUQs)

