

09 September 2021 Daily Report on COVID-19

Figure 1: Summary Statistics for the Past 3 Weeks

	Number of local cases			Percentage of local cases		
	2 weeks before (20 Aug-26 Aug)	Week before (27 Aug-2 Sep)	Past week (3 Sep-9 Sep)	2 weeks before (20 Aug-26 Aug)	Week before (27 Aug-2 Sep)	Past week (3 Sep-9 Sep)
Linked and Already Quarantined	226	356	598	42%	35%	30%
Linked and Detected through Surveillance	187	348	433	35%	34%	21%
Unlinked	119	321	984	22%	31%	49%
Household Transmission cases (as a percentage of local linked cases)	252	356	645	61%	51%	63%

Figure 2: Number of Local Cases by Already Quarantined/ Detected from Surveillance¹
(13 Aug – 9 Sep)

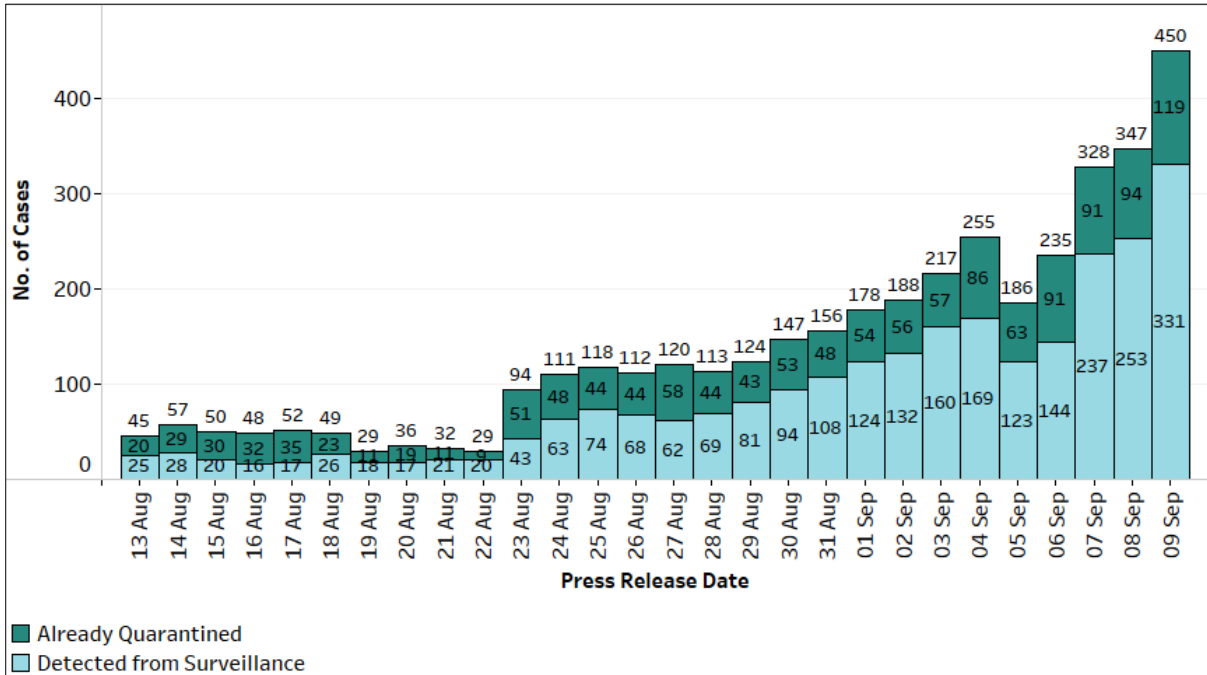
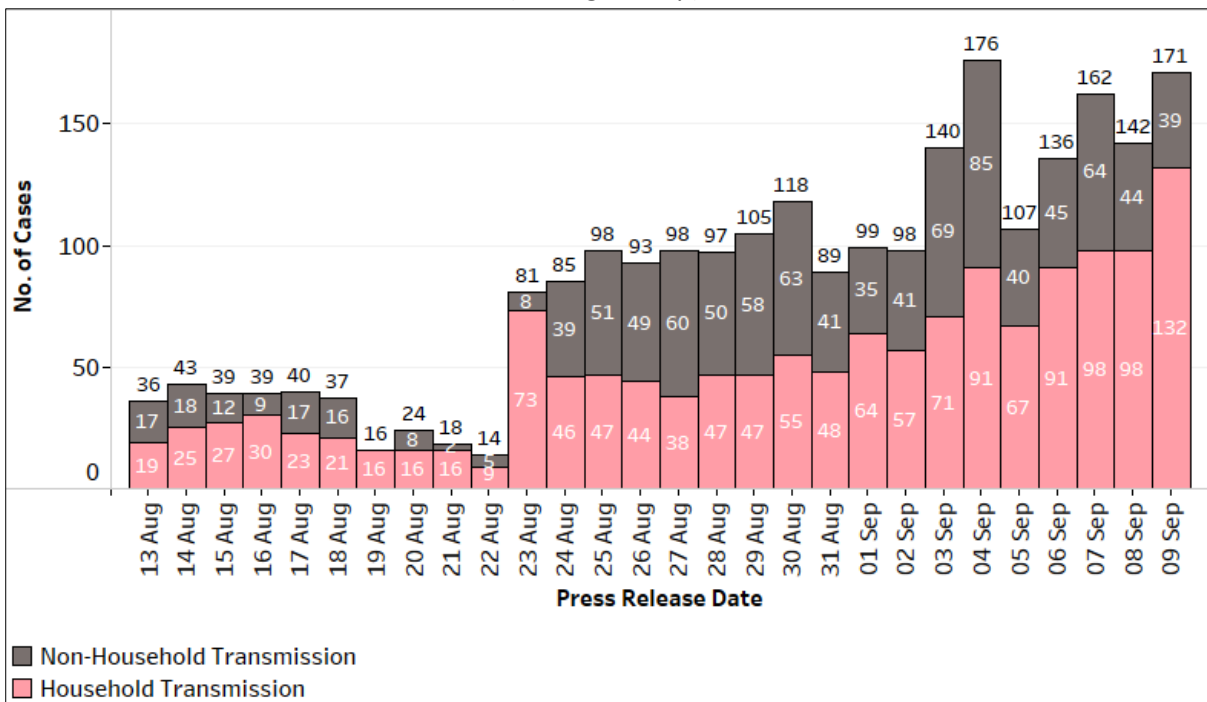


Figure 3: Number of Local Linked Cases by Household/ Non-Household Transmission¹
(13 Aug – 9 Sep)



¹ Incorporates re-classifications of earlier reported cases.

Figure 4: Number of Local Cases by Age (10 Jul – 9 Sep)

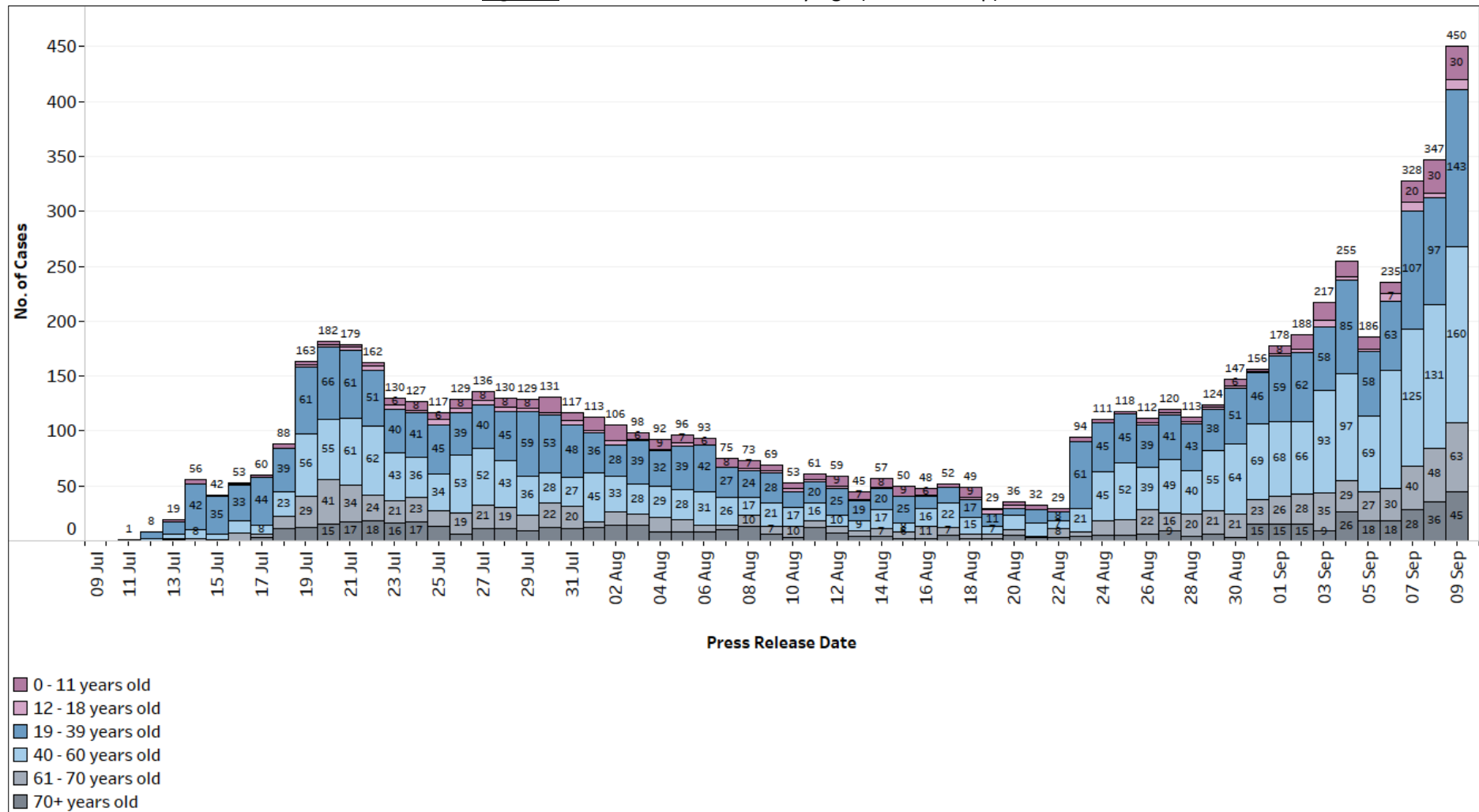


Figure 5: Deaths and Active Cases in ICU, Requiring Oxygen Supplementation or Hospitalised (10 Jul – 9 Sep)

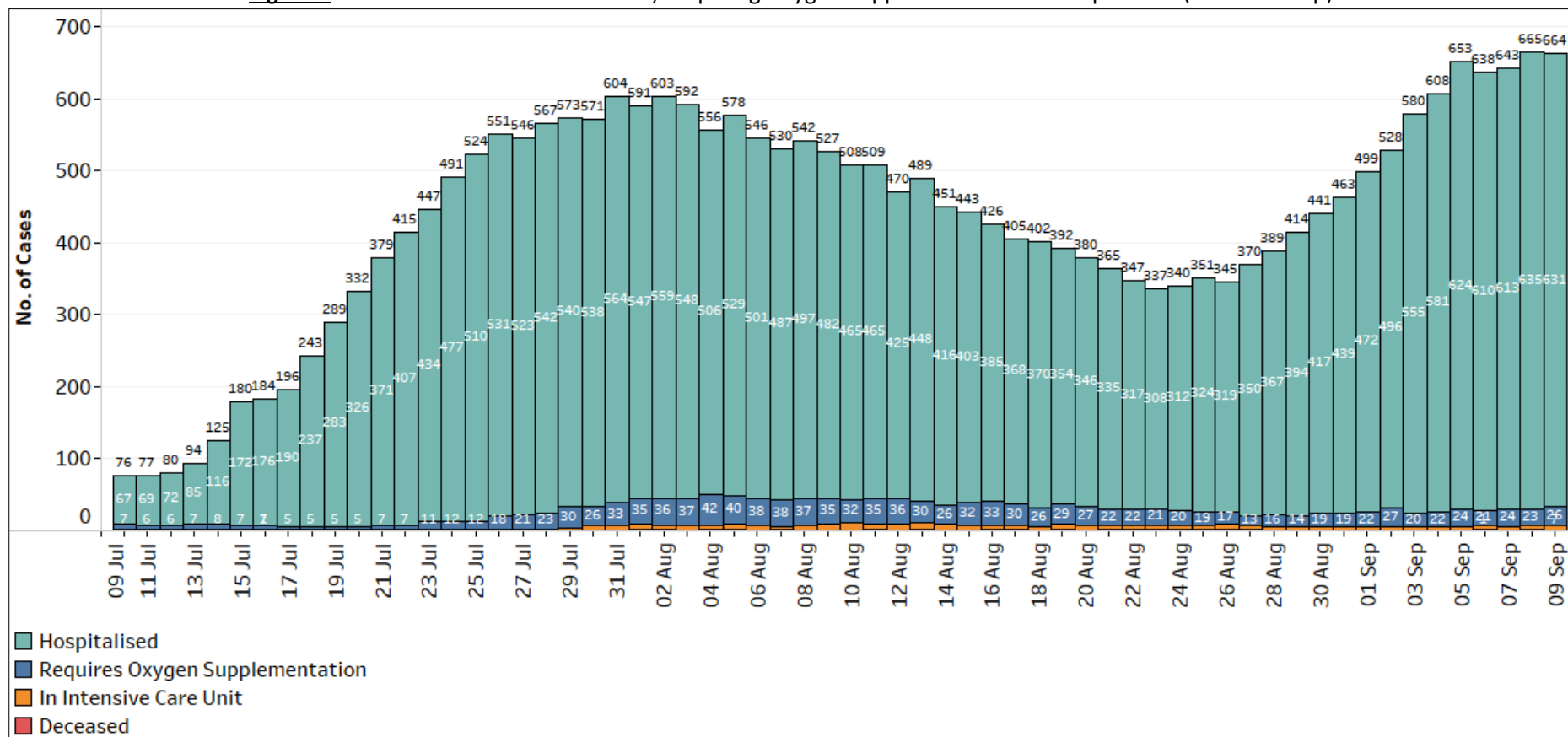


Figure 6: Average Number of Days from Onset of Symptoms to Isolation (QO, hospital admission or notification to MOH) for Community Cases Detected through Surveillance in Each Day

Line represents the 14-day moving average; Bar represents the daily average²

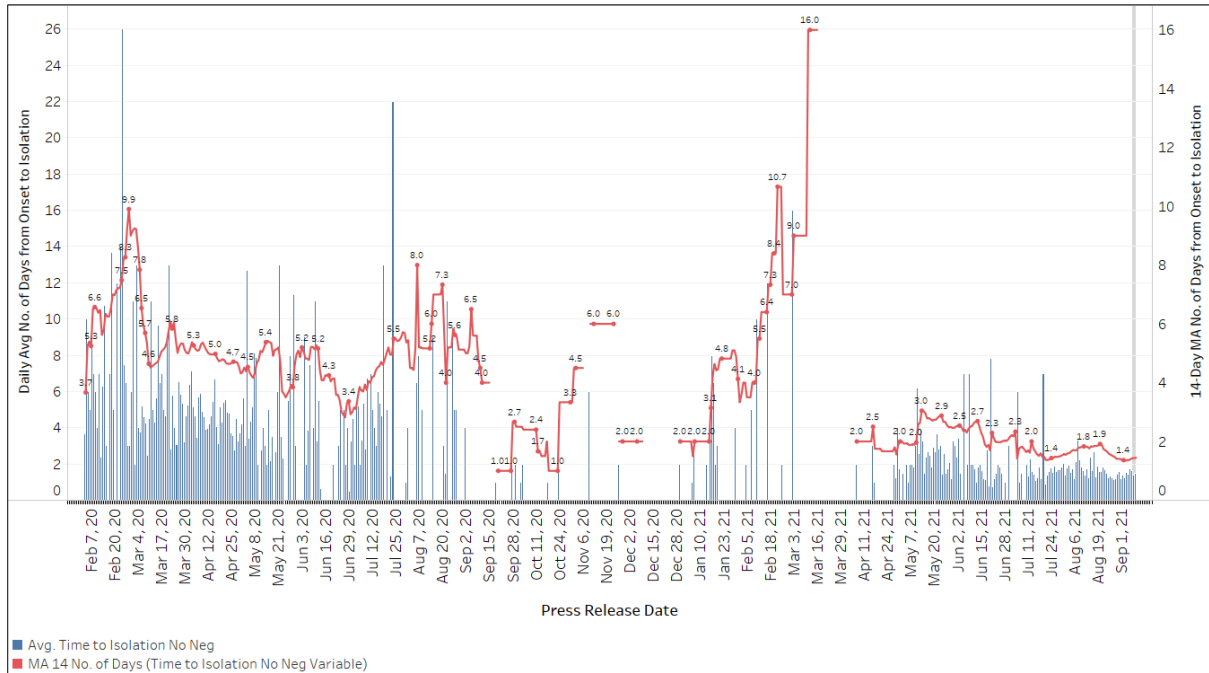


Figure 7: Serology and Symptom Status of Imported Cases Reported from 27 Aug to 2 Sep

Symptoms	S+	S-	Not Serology Tested	Pending Serology Result	Total No. of Cases
Asymptomatic	14	7	0	2	23
Symptomatic	7	7	0	1	15
Total	21	14	0	3	38

² Area in grey demarcates data points for the past 3 days where some cases may still be pending epidemiological investigation. The bar graph shows the daily average number of days from symptoms onset to isolation, while the line graph shows the moving average for the past 14 days. Both graphs exclude cases with no onset date (asymptomatic) in the computation of the average. Community cases with symptoms who are isolated on the same day that symptoms occurred would have an isolation time of 0. There is a gap in the line graph from 16 to 18 Sep as there are no symptomatic cases in the preceding 14 days.

Figure 8: Deaths and New Admissions into ICU Among Local Cases by Notification Date

