

**1 August 2020 Daily Report on COVID-19****(1) Number of COVID-19 Cases****Figure 1.1:** Number of Cases Reported over the Past 14 Days

Press Release Date	Imported	Non-Imported Cases														All Cases
		Community Cases <sup>1</sup>										Dorm Residents <sup>2</sup>				
		Linked Cases					Unlinked Cases <sup>3</sup>					Sub-Total	Incidence Rate <sup>4</sup> (per 100,000)	No. of Cases	Incidence Rate <sup>5</sup> (per 100,000)	
		SC/PR	G or F (work permit)	G or F (other pass types) <sup>5</sup>	Visitor	Sub-Total	SC/PR	G or F (work permit)	G or F (other pass types) <sup>6</sup>	Visitor	Sub-Total					
Before 19-Jul	638	816	344	179	4	1,343	487	173	103	5	768	2,111	-	44,906	-	47,655
19-Jul	5	1	2	0	0	3	1	3	1	0	5	8	0.15	244	76	257
20-Jul	2	2	4	0	0	6	3	1	1	0	5	11	0.20	110	34	123
21-Jul	3	1	1	1	0	3	0	4	2	0	6	9	0.17	387	120	399
22-Jul	6	2	1	0	0	3	1	1	3	0	5	8	0.15	296	92	310
23-Jul	5	2	0	0	0	2	2	4	0	0	6	8	0.15	341	110	354
24-Jul	2	0	2	0	0	2	0	1	0	0	1	3	0.056	272	84	277
25-Jul	6	0	1	0	0	1	0	1	0	0	1	2	0.037	505	160	513
26-Jul	4	0	3	0	0	3	0	1	1	0	2	5	0.093	472	150	481
27-Jul	15	1	0	1	0	2	0	0	0	0	0	2	0.037	452	140	469
28-Jul	2	0	0	1	0	1	0	0	1	0	1	2	0.037	355	110	359
29-Jul	4	2	0	1	0	3	0	0	0	0	0	3	0.056	327	100	334
30-Jul	4	1	3	0	0	4	0	0	0	0	0	4	0.074	270	84	278
31-Jul	3	0	0	1	0	1	0	1	1	0	2	3	0.056	390	120	396
1-Aug	5	0	0	0	0	0	1	0	0	0	1	1	0.019	301	93	307
Total since start of outbreak	704	828	361	184	4	1,377	495	190	113	5	803	2,180	-	49,628	-	52,512
Population at risk												5,381,000		323,000		5,704,000
Prevalence												0.04%		15.36%		0.92%

<sup>1</sup> Previously we had tracked the work permit holders living outside dormitories as a separate category, and put a large number of these workers on Stay Home Notices (SHN). The SHN for these workers has since expired. Hence we have now updated the definition of "Cases in the Community" to include all cases (including amongst work permit holders) that are detected outside of the dormitories.

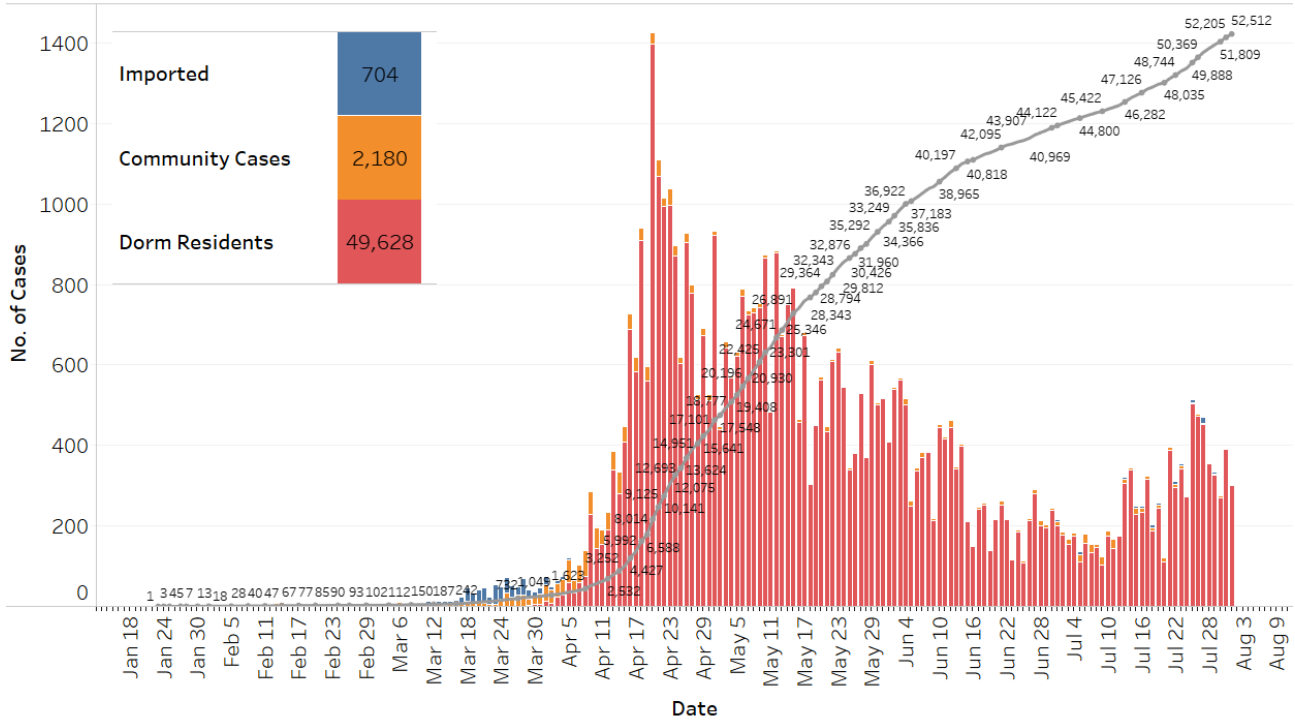
<sup>2</sup> Includes PR residing in dorms.

<sup>3</sup> Includes cases pending epi-investigation.

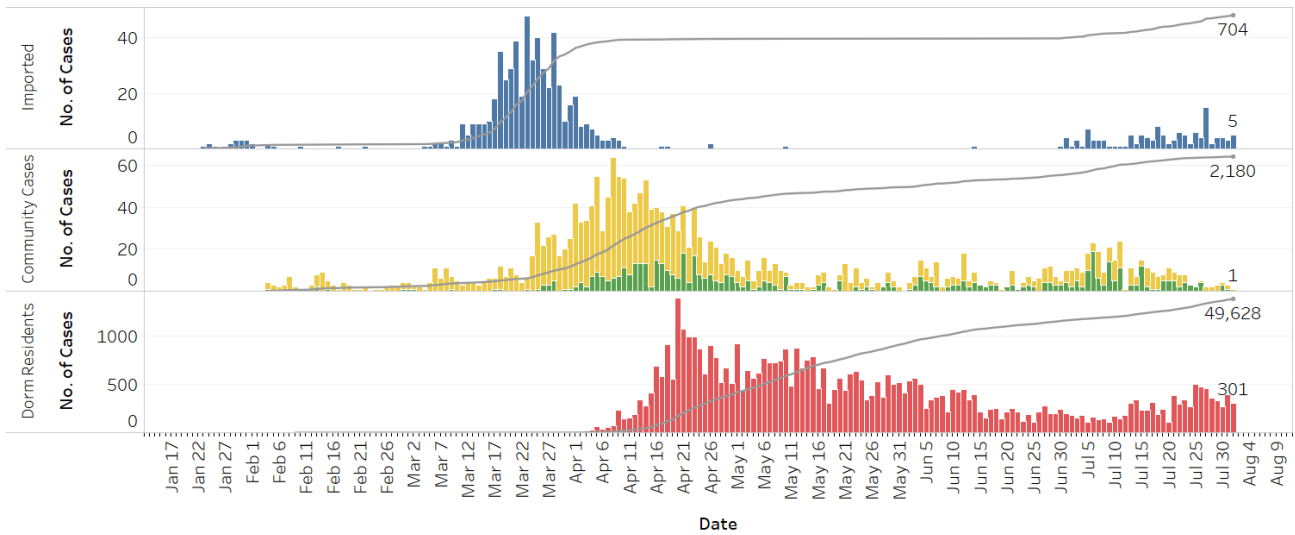
<sup>4</sup> Incidence rates are rounded to two significant figures.

<sup>5</sup> Includes Training Work Permit (TWP) holders.

**Figure 1.2:** Epidemic Curve of the COVID-19 Outbreak by Press Release Date



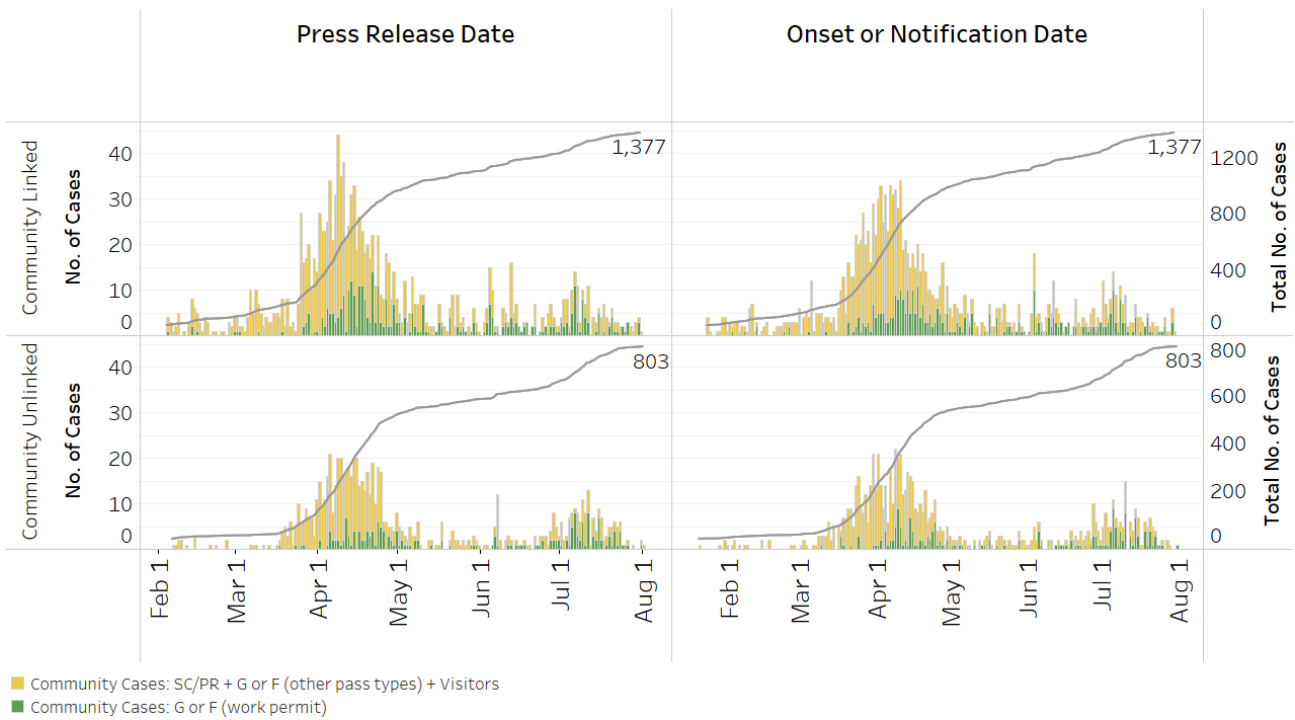
**Figure 1.3:** Epidemic Curve of the COVID-19 Outbreak by Press Release Date



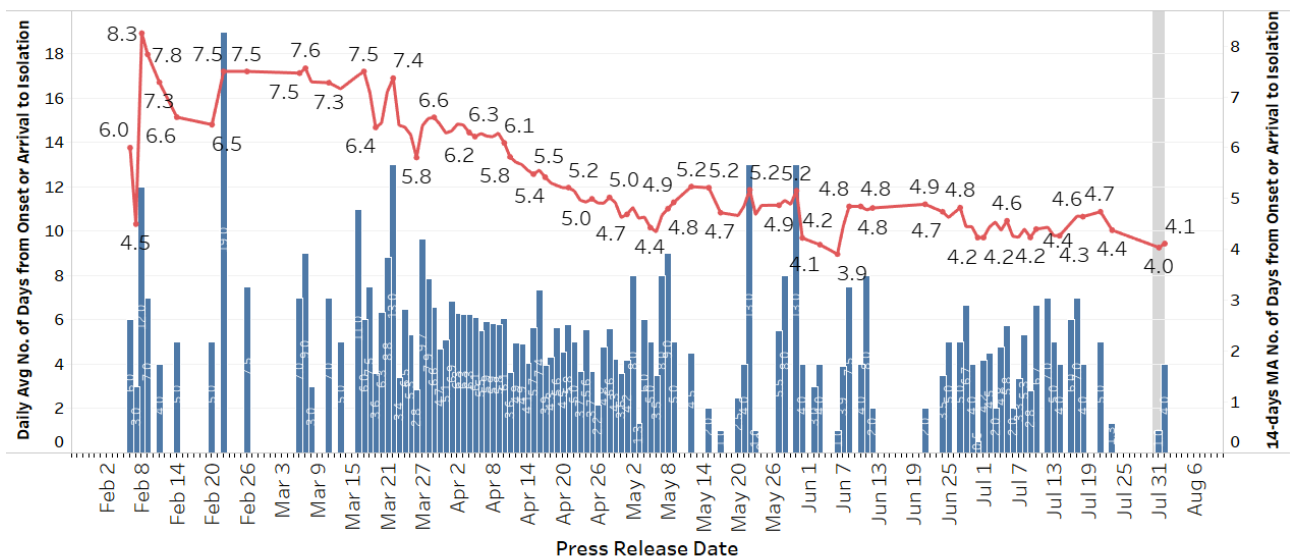
**COVID-19 Cases**

- Imported
- Community Cases: SC/PR + G or F (other pass types) + Visitors
- Community Cases: G or F (work permit)
- Dorm Residents

**Figure 1.4:** Epidemic Curve of Linked and Unlinked Cases among the Community by Press Release Date (left panel) and by Symptom Onset or Notification Date<sup>6</sup> (right panel)



**Figure 1.5:** Average Number of Days from Onset of Symptoms to Isolation (QO, MOH contact, notification or admission) for Community Unlinked Cases in Each Day<sup>7</sup>



Line represents the 14-day moving average; Bar represents the daily average<sup>8</sup>

<sup>7</sup> Date of notification was used for cases that did not display any symptoms. The numbers with onset in the past few days may see an increase as more cases are notified.

<sup>8</sup> Area in grey demarcates the data points for the past 3 days where some cases are still pending investigation. The bar chart shows the daily average number of days from onset date to isolation, while the line chart shows the moving average for the past 14 days. Both charts exclude cases with missing onset dates in the computation of the average.

<sup>9</sup> Asymptomatic community unlinked cases are not reflected in this chart. Community unlinked cases with symptoms who are isolated on the same day that symptoms occurred would have an isolation time of 0.

## Number of COVID-19 Cases in Hospitals and Community Care Facilities

**Figure 2.1:** Summary of Confirmed Cases by Status in the Past 14 Days

Press Release Date	Currently Admitted in Hospitals		In Care Facilities <sup>9</sup>	Total Recovered		Total Demised	Total
	ICU	General Wards		Completed Isolation	Discharged from Hospital		
19-Jul	0	181	3,618	42,156	1,930	27	<b>47,912</b>
20-Jul	0	183	3,454	42,436	1,935	27	<b>48,035</b>
21-Jul	0	170	3,653	42,642	1,942	27	<b>48,434</b>
22-Jul	0	150	3,772	42,839	1,956	27	<b>48,744</b>
23-Jul	0	137	3,919	43,048	1,967	27	<b>49,098</b>
24-Jul	0	157	4,019	43,186	1,986	27	<b>49,375</b>
25-Jul	0	148	4,361	43,357	1,995	27	<b>49,888</b>
26-Jul	0	173	4,648	43,518	2,003	27	<b>50,369</b>
27-Jul	0	179	4,940	43,686	2,006	27	<b>50,838</b>
28-Jul	0	185	5,092	43,875	2,018	27	<b>51,197</b>
29-Jul	0	184	5,222	44,071	2,027	27	<b>51,531</b>
30-Jul	0	148	5,326	44,264	2,044	27	<b>51,809</b>
31-Jul	0	136	5,551	44,436	2,055	27	<b>52,205</b>
1-Aug	0	117	5,628	44,677	2,063	27	<b>52,512</b>

<sup>9</sup> Community Care Facilities (i.e. D'Resort, EXPO, Changi Exhibition Centre, Big Box), Private Hospitals (i.e. Concord International Hospital, Mt Elizabeth Hospital, Gleneagles Hospital, Mt Elizabeth Novena Hospital, Parkway East Hospital), Community Hospitals (i.e. Bright Vision Hospital, St. Andrew's Community Hospital, Jurong Community Hospital) and other care facilities.

(2) Number of Stay-Home-Notice (SHN) Issued

Figure 3.1: Daily Number of SHN issued

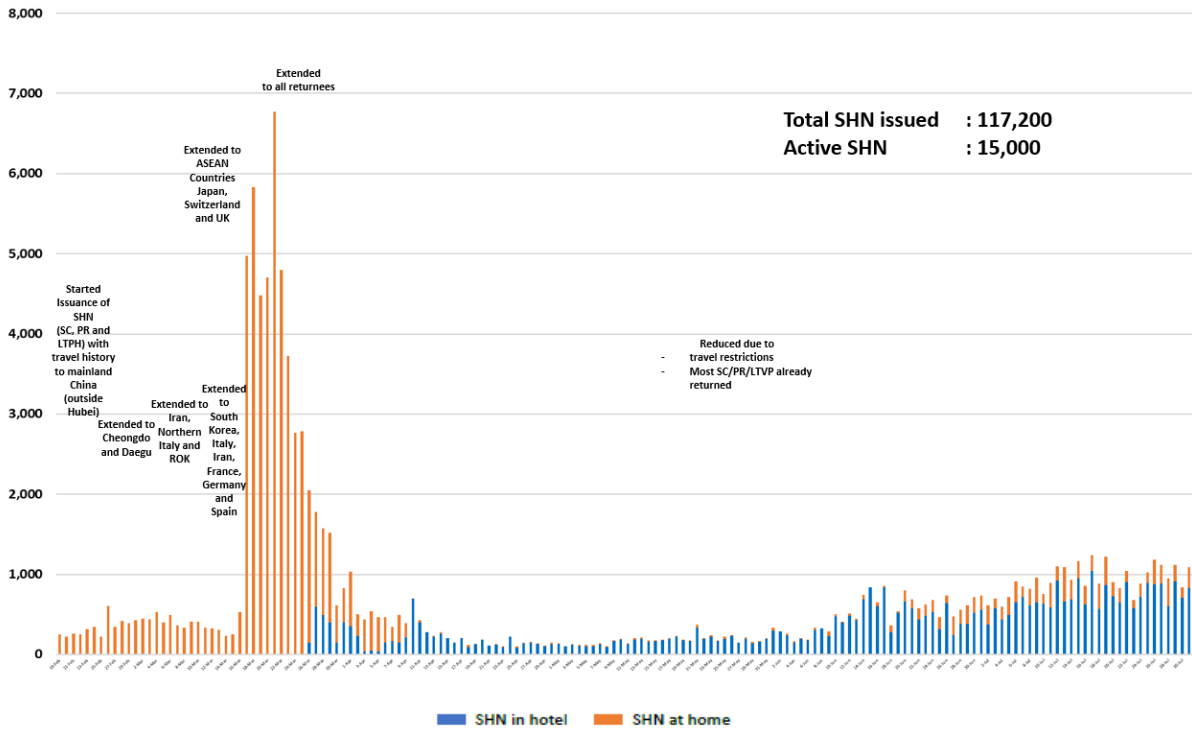
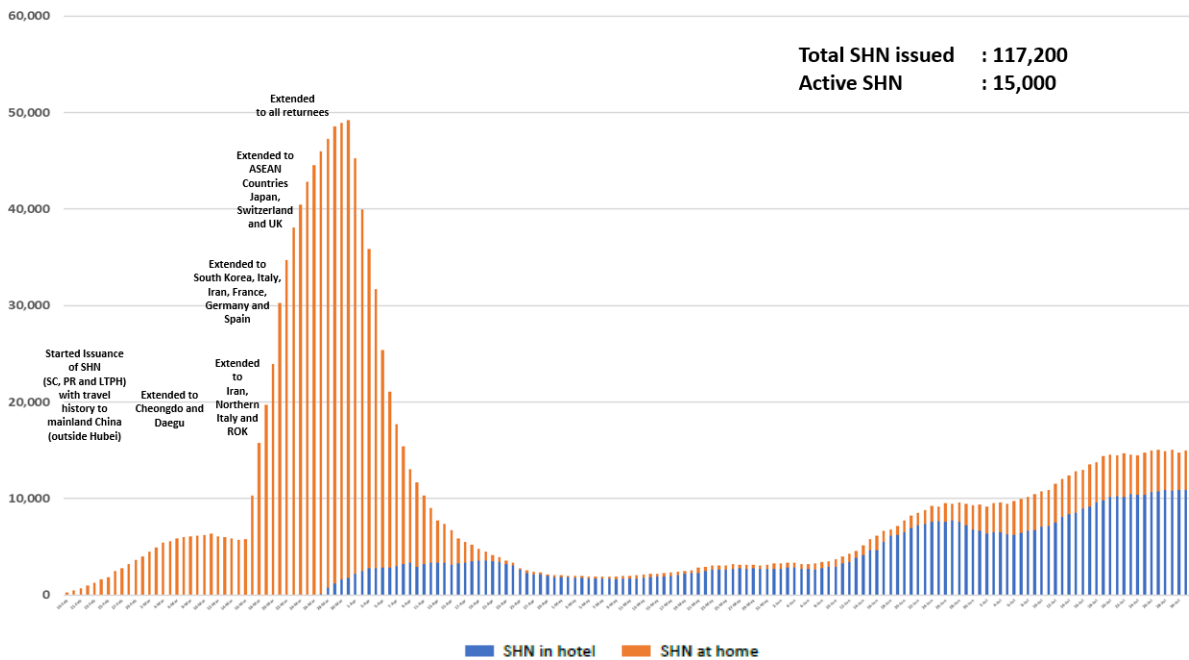
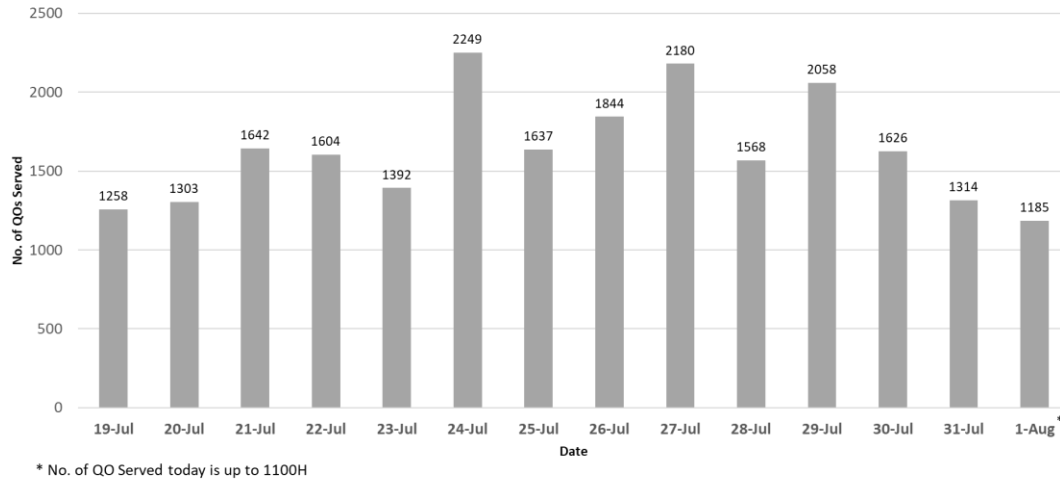


Figure 3.2: Active Stock Number of SHN (Home) and SHN (Hotel)



### (3) Number of Quarantine Order (QO) Issued

**Figure 4.1:** Daily Number of QOs Issued



**Figure 4.2:** Active Number of Persons Under Quarantine (PUQs)

