

**10 June 2020 Daily Report on COVID-19****(1) Number of COVID-19 Cases****Figure 1.1:** Number of Cases Reported over the Past 14 Days

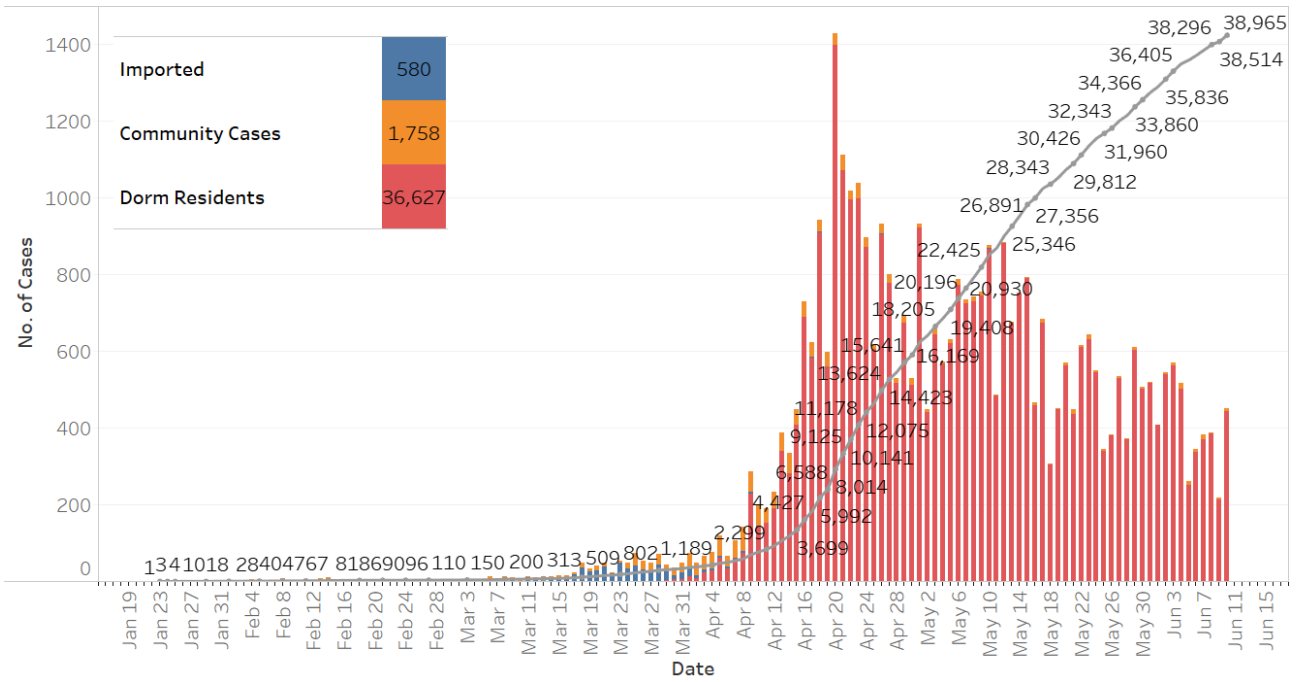
Press Release Date	Imported	Non-Imported Cases														All Cases
		Community Cases <sup>1</sup>										Dorm Residents				
		Linked Cases					Unlinked Cases <sup>2</sup>					Sub-Total	Incidence Rate (per 100,000)	No. of Cases	Incidence Rate (per 100,000)	
		SC/PR	G or F (work permit)	G or F (other pass types)	Visitor	Sub-Total	SC/PR	G or F (work permit)	G or F (other pass types)	Visitor	Sub-Total					
Before 28-May	580	721	227	126	4	1,078	422	100	63	4	589	1,667	-	30,629	-	32,876
28-May	0	0	0	0	0	0	0	2	0	0	2	2	0.037	371	110	373
29-May	0	2	2	1	0	5	1	2	1	0	4	9	0.16	602	190	611
30-May	0	0	1	1	0	2	2	1	0	0	3	5	0.093	501	160	506
31-May	0	0	0	0	0	0	2	0	0	0	2	2	0.037	516	160	518
1-Jun	0	0	0	0	0	0	0	0	0	0	0	0	0	408	130	408
2-Jun	0	1	1	1	0	3	0	0	1	0	1	4	0.074	540	170	544
3-Jun	0	0	3	3	0	6	1	0	0	0	1	7	0.13	562	170	569
4-Jun	0	2	7	6	0	15	0	0	0	0	0	15	0.28	502	160	517
5-Jun	0	6	1	0	0	7	0	4	0	0	4	11	0.20	250	77	261
6-Jun	0	1	0	0	0	1	2	4	0	0	6	7	0.13	337	100	344
7-Jun	0	0	1	1	0	2	10	1	1	0	12	14	0.26	369	110	383
8-Jun	0	0	0	0	0	0	1	0	1	0	2	2	0.037	384	120	386
9-Jun	0	0	1	3	0	4	0	1	1	0	2	6	0.11	212	66	218
10-Jun	0	2	3	0	0	5	1	0	1	0	2	7	0.13	444	140	451
Total since start of outbreak	580	735	247	142	4	1,128	442	115	69	4	630	1,758	-	36,627	-	38,965
Population at risk <sup>3</sup>												5,381,000		323,000		5,704,000
Prevalence												0.03%		11.34%		0.68%

<sup>1</sup> Previously we had tracked the work permit holders living outside dormitories as a separate category, and put a large number of these workers on Stay Home Notices (SHN). The SHN for these workers has since expired. Hence we have now updated the definition of "Cases in the Community" to include all cases (including amongst work permit holders) that are detected outside of the dormitories.

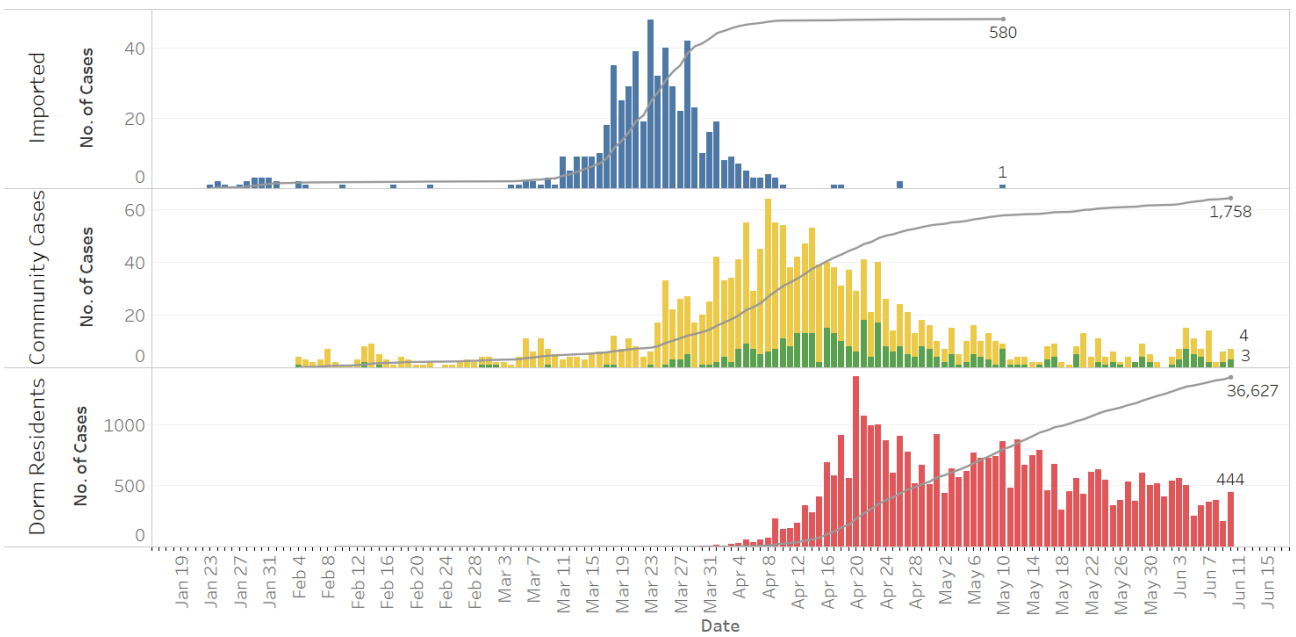
<sup>2</sup> Includes cases pending epi-investigation.

<sup>3</sup> Population at risk for community cases includes SC/PRs and work pass holders not residing in dormitories. Source: MOM and Singstat.

**Figure 1.2:** Epidemic Curve of the COVID-19 Outbreak by Press Release Date

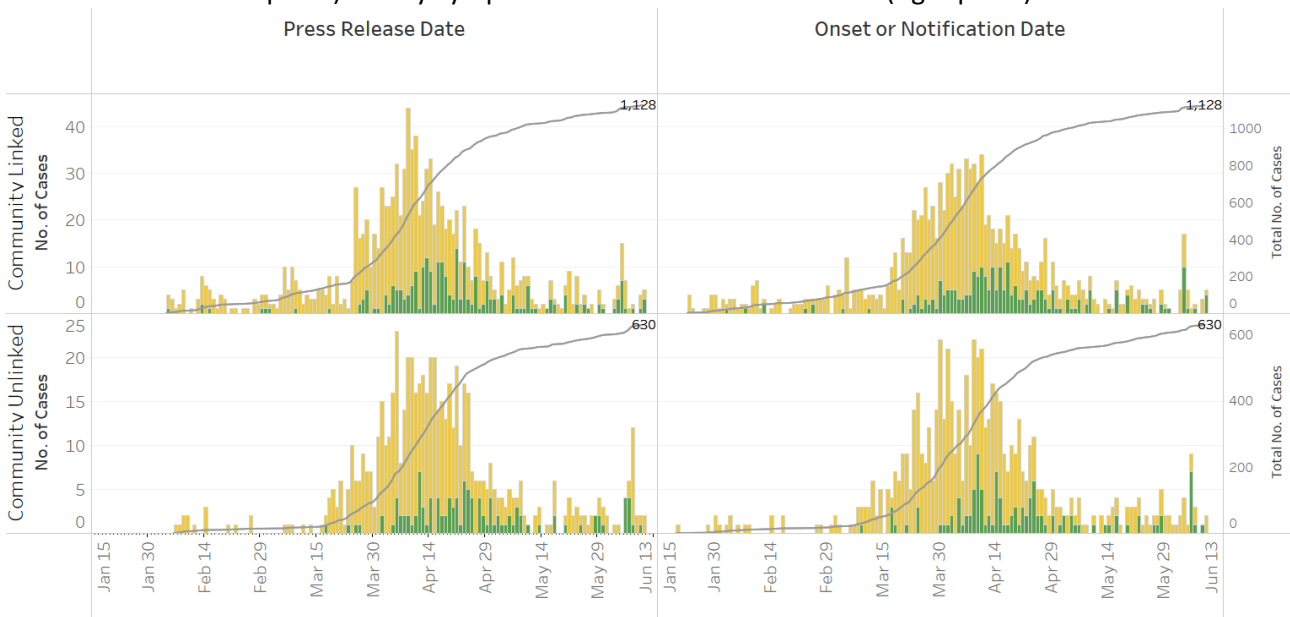


**Figure 1.3:** Epidemic Curve of the COVID-19 Outbreak by Press Release Date



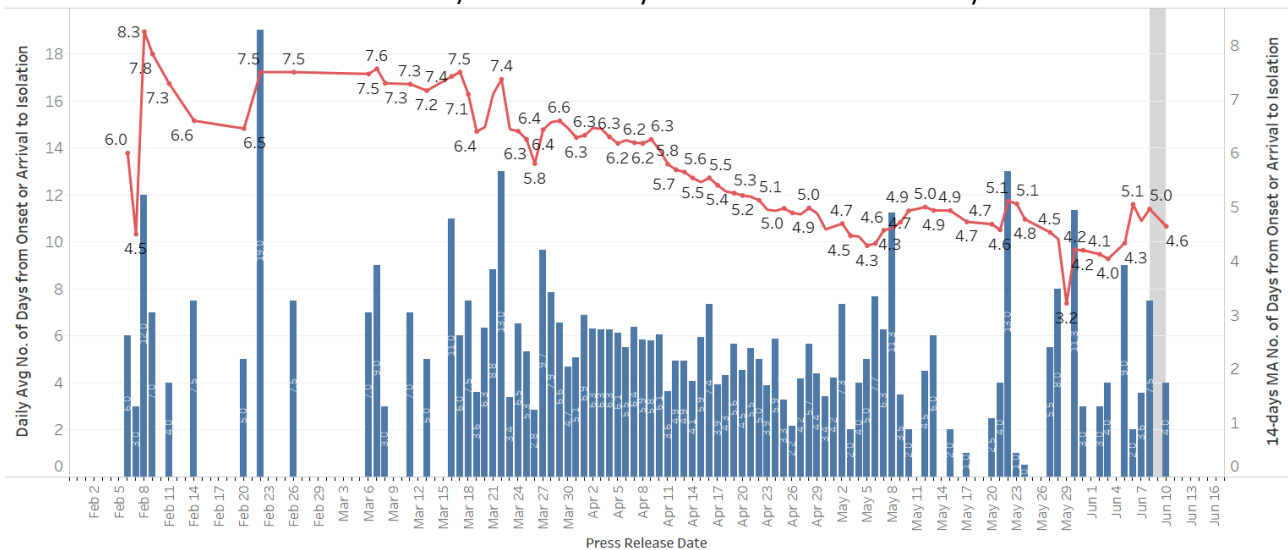
**COVID-19 Cases**  
 ■ Imported  
 ■ Community Cases: SC/PR + G or F (other pass types)  
 ■ Community Cases: G or F (work permit)  
 ■ Dorm Residents

**Figure 1.4:** Epidemic Curve of Linked and Unlinked Cases among the Community by Press Release Date (left panel) and by Symptom Onset or Notification Date<sup>4</sup> (right panel)



**Community Cases**  
 ■ Community Cases: SC/PR + G or F (other pass types)  
 ■ Community Cases: G or F (work permit)

**Figure 1.5:** Average Number of Days from Onset of Symptoms to Isolation (QO, MOH contact, notification or admission) for Community Unlinked Cases in Each Day<sup>5</sup>



*Line represents the 14-day moving average; Bar represents the daily average<sup>6</sup>*

<sup>4</sup> Date of notification was used for cases that did not display any symptoms. The numbers with onset in the past few days may see an increase as more cases are notified.

<sup>5</sup> Area in grey demarcates the data points for the past 3 days where some cases are still pending investigation. The bar chart shows the daily average number of days from onset date to isolation, while the line chart shows the moving average for the past 14 days. Both charts exclude cases with missing onset dates in the computation of the average.

<sup>6</sup> The daily average of 13.0 on 22 May is attributed to a single case who had onset of symptoms on 8 May and was isolated on 21 May.

## Number of COVID-19 Cases in Hospitals and Community Care Facilities

**Figure 2.1:** Summary of Confirmed Cases by Status in the Past 14 Days

Press Release Date	Currently Admitted in Hospitals		In Care Facilities <sup>7</sup>	Total Recovered		Total Demised	Total
	ICU	General Wards		Completed Isolation	Discharged from Hospital		
28-May	7	503	14,422	16,996	1,298	23	<b>33,249</b>
29-May	8	453	13,745	18,298	1,333	23	<b>33,860</b>
30-May	7	367	13,242	19,305	1,422	23	<b>34,366</b>
31-May	8	313	12,841	20,245	1,454	23	<b>34,884</b>
1-Jun	7	337	12,458	21,004	1,462	24	<b>35,292</b>
2-Jun	6	325	12,306	21,706	1,469	24	<b>35,836</b>
3-Jun	5	329	12,465	22,089	1,493	24	<b>36,405</b>
4-Jun	5	298	12,691	22,404	1,500	24	<b>36,922</b>
5-Jun	4	303	12,643	22,693	1,516	24	<b>37,183</b>
6-Jun	4	304	12,635	23,041	1,518	25	<b>37,527</b>
7-Jun	3	292	12,704	23,361	1,525	25	<b>37,910</b>
8-Jun	4	265	12,634	23,823	1,545	25	<b>38,296</b>
9-Jun	3	245	12,364	24,316	1,561	25	<b>38,514</b>
10-Jun	3	220	12,185	24,948	1,584	25	<b>38,965</b>

<sup>7</sup> Community Care Facilities (i.e. D'Resort, EXPO, Changi Exhibition Centre, Tuas South), Private Hospitals (i.e. Concord International Hospital, Mt Elizabeth Hospital, Gleneagles Hospital, Mt Alvernia Hospital, Mt Elizabeth Novena Hospital, Parkway East Hospital, Farrer Park Hospital), Community Hospitals (i.e. Bright Vision Hospital, St. Andrew's Community Hospital, Yishun Community Hospital, Jurong Community Hospital, Sengkang Community Hospital) and other care facilities.

(2) Number of Stay-Home-Notice (SHN) Issued

Figure 3.1: Daily Number of SHN issued

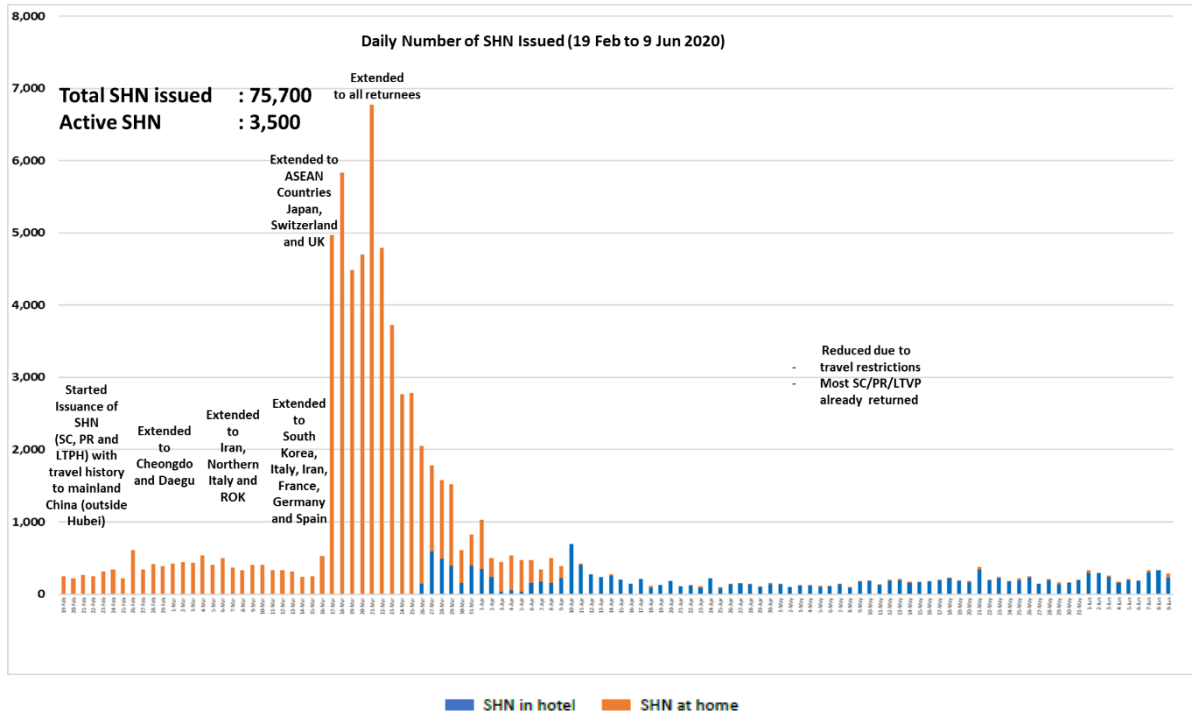
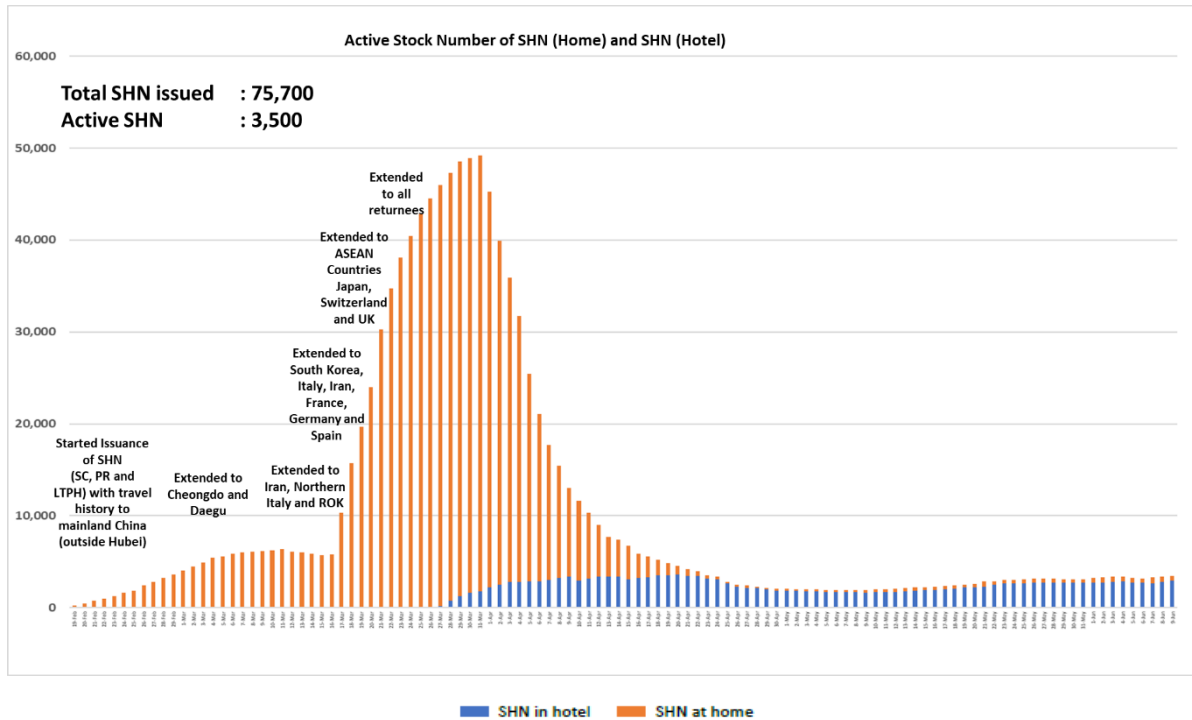
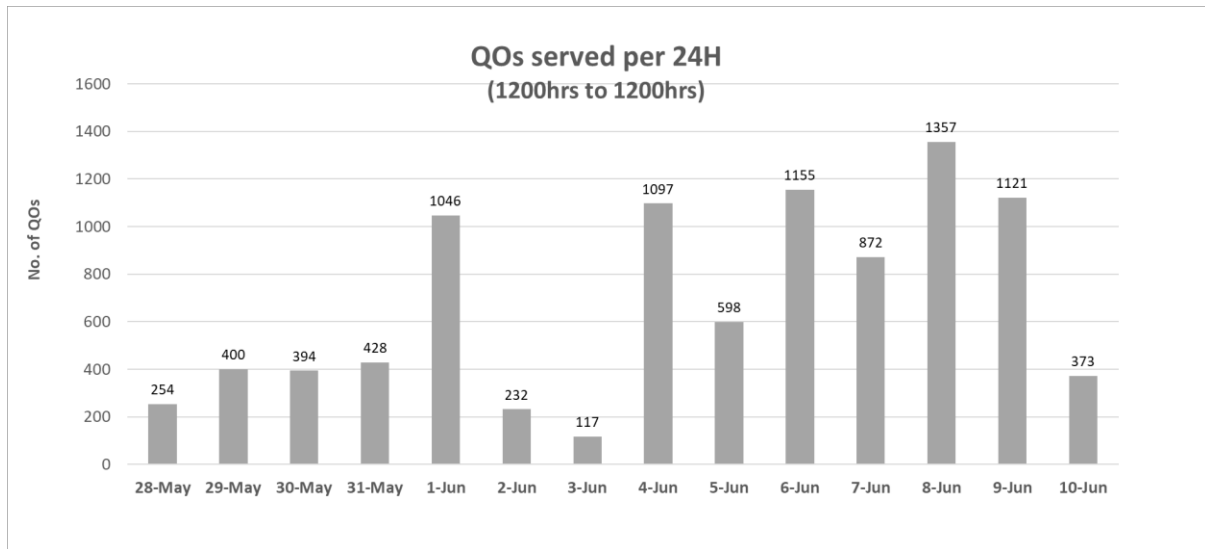


Figure 3.2: Active Stock Number of SHN (Home) and SHN (Hotel)



**(3) Number of Quarantine Order (QO) Issued**

**Figure 4.1:** Daily Number of QOs Issued



**Figure 4.2:** Active Number of Persons Under Quarantine (PUQs)

