

11 July 2020 Daily Report on COVID-19**(1) Number of COVID-19 Cases****Figure 1.1:** Number of Cases Reported over the Past 14 Days

Press Release Date	Imported	Non-Imported Cases														All Cases
		Community Cases ¹										Dorm Residents				
		Linked Cases					Unlinked Cases ²					Sub-Total	Incidence Rate ³ (per 100,000)	No. of Cases	Incidence Rate ³ (per 100,000)	
		SC/PR	G or F (work permit)	G or F (other pass types) ⁴	Visitor	Sub-Total	SC/PR	G or F (work permit)	G or F (other pass types) ⁴	Visitor	Sub-Total					
Before 28-Jun	581	766	281	158	4	1,209	446	123	74	5	648	1,857	-	40,808	-	43,246
28-Jun	0	2	2	0	0	4	4	2	2	0	8	12	0.22	201	62	213
29-Jun	0	1	1	0	0	2	3	2	0	0	5	7	0.13	195	60	202
30-Jun	1	1	1	0	0	2	1	2	0	0	3	5	0.093	240	74	246
1-Jul	4	1	3	0	0	4	5	1	0	0	6	10	0.19	201	62	215
2-Jul	1	6	2	0	0	8	2	0	0	0	2	10	0.19	177	55	188
3-Jul	3	3	3	2	0	8	0	2	1	0	3	11	0.20	155	48	169
4-Jul	1	0	1	0	0	1	4	1	3	0	8	9	0.17	175	54	185
5-Jul	7	4	5	0	0	9	2	5	2	0	9	18	0.33	111	34	136
6-Jul	3	2	11	1	0	14	1	8	0	0	9	23	0.43	157	49	183
7-Jul	3	8	3	0	0	11	3	3	2	0	8	19	0.35	134	41	156
8-Jul	3	2	1	0	0	3	2	2	2	0	6	9	0.17	146	45	158
9-Jul	1	0	8	1	0	9	4	6	2	0	12	21	0.39	103	32	125
10-Jul	1	3	4	1	0	8	4	1	3	0	8	16	0.30	174	54	191
11-Jul	1	6	3	2	0	11	1	8	4	0	13	24	0.45	145	45	170
Total since start of outbreak	610	805	329	165	4	1,303	482	166	95	5	748	2,051	-	43,122	-	45,783
Population at risk ⁵												5,381,000		323,000		5,704,000
Prevalence												0.04%		13.35%		0.80%

¹ Previously we had tracked the work permit holders living outside dormitories as a separate category, and put a large number of these workers on Stay Home Notices (SHN). The SHN for these workers has since expired. Hence we have now updated the definition of "Cases in the Community" to include all cases (including amongst work permit holders) that are detected outside of the dormitories.

² Includes cases pending epi-investigation.

³ Incidence rates are rounded to two significant figures.

⁴ Includes Training Work Permit (TWP) holders.

⁵ Population at risk for community cases includes SC/PRs and work pass holders not residing in dormitories. Source: MOM and Singstat.

Figure 1.2: Epidemic Curve of the COVID-19 Outbreak by Press Release Date

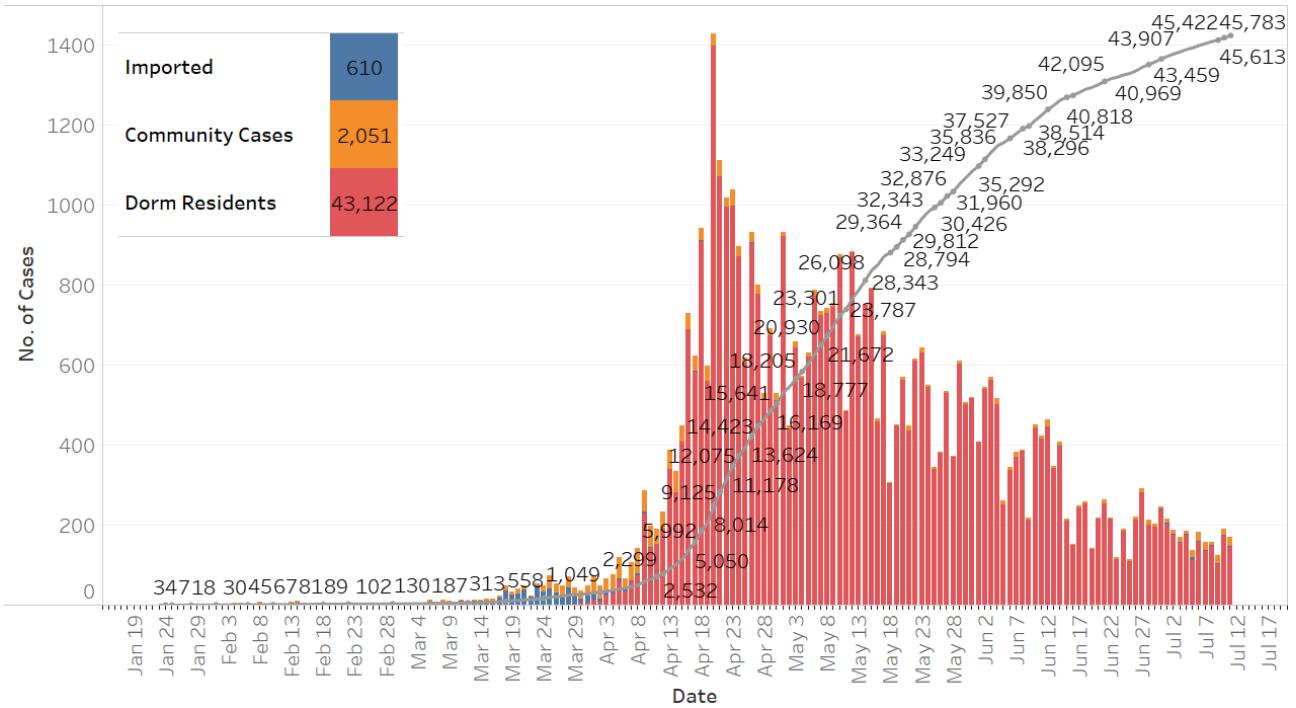
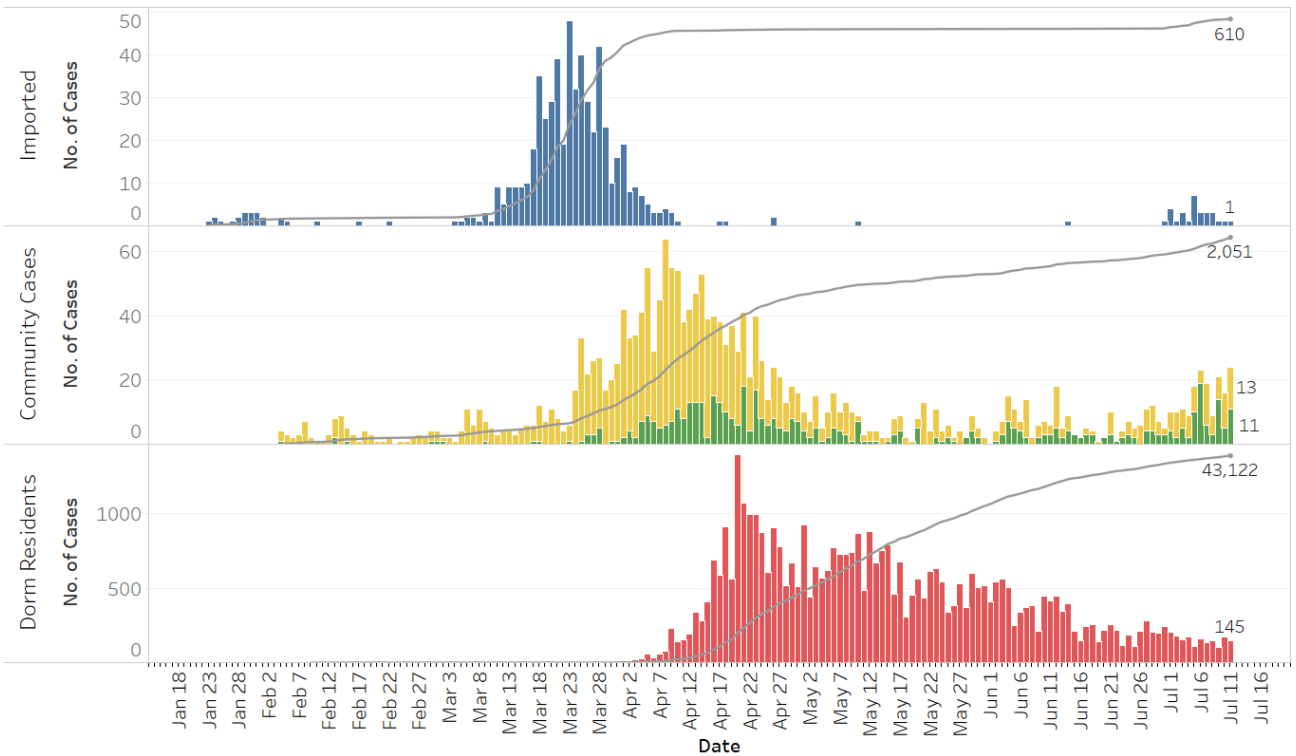


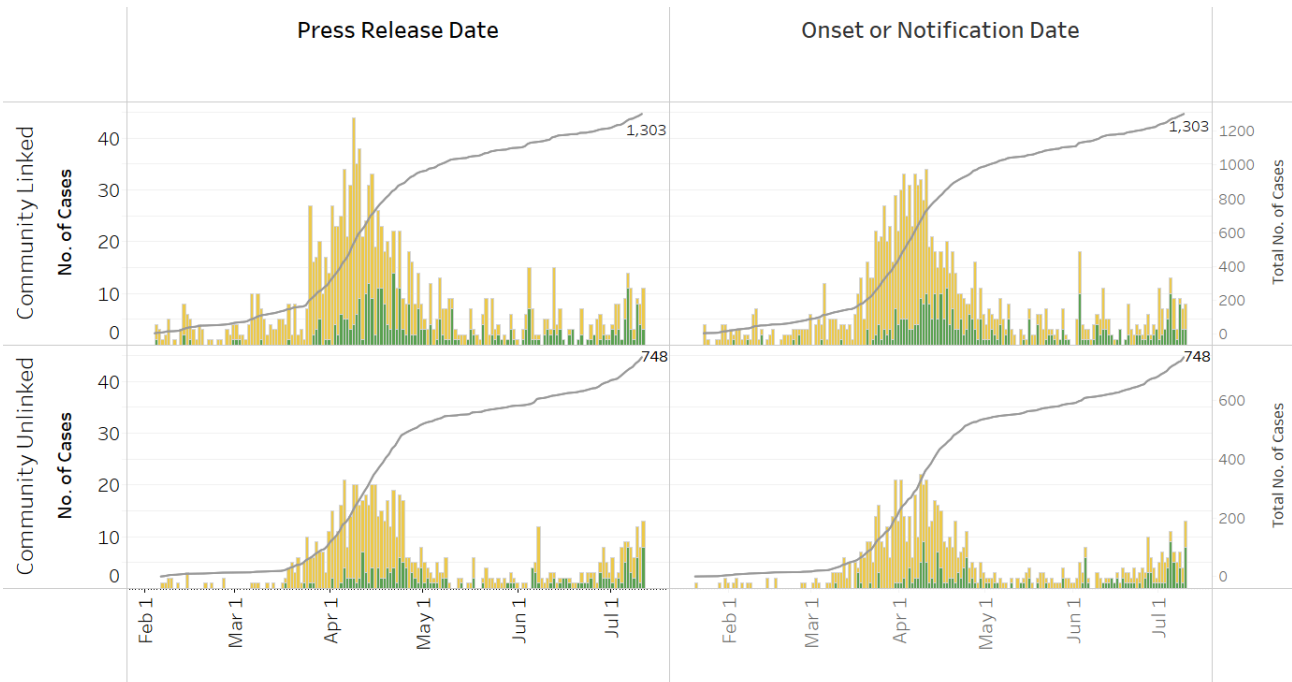
Figure 1.3: Epidemic Curve of the COVID-19 Outbreak by Press Release Date



COVID-19 Cases

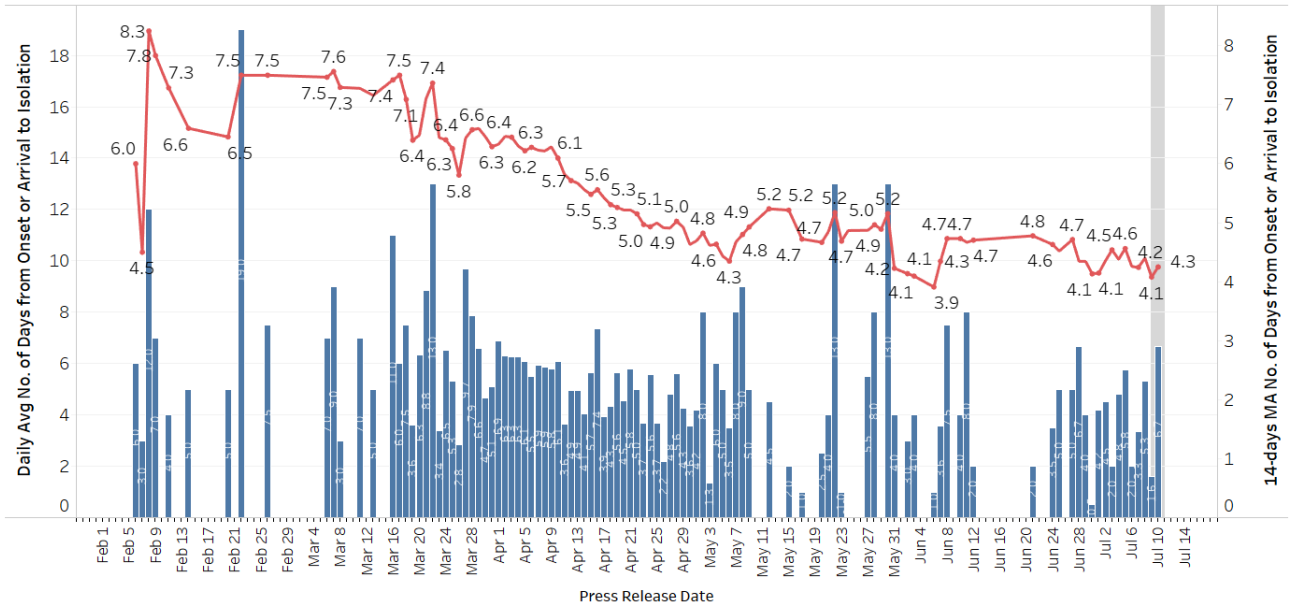
- Imported
- Community Cases: SC/PR + G or F (other pass types) + Visitors
- Community Cases: G or F (work permit)
- Dorm Residents

Figure 1.4: Epidemic Curve of Linked and Unlinked Cases among the Community by Press Release Date (left panel) and by Symptom Onset or Notification Date⁶ (right panel)



Community Cases
 ■ Community Cases: SC/PR + G or F (other pass types) + Visitors
 ■ Community Cases: G or F (work permit)

Figure 1.5: Average Number of Days from Onset of Symptoms to Isolation (QO, MOH contact, notification or admission) for Community Unlinked Cases in Each Day⁷



Line represents the 14-day moving average; Bar represents the daily average⁸

⁶ Date of notification was used for cases that did not display any symptoms. The numbers with onset in the past few days may see an increase as more cases are notified.

⁷ Area in grey demarcates the data points for the past 3 days where some cases are still pending investigation. The bar chart shows the daily average number of days from onset date to isolation, while the line chart shows the moving average for the past 14 days. Both charts exclude cases with missing onset dates in the computation of the average.

⁸ Asymptomatic community unlinked cases are not reflected in this chart. Community unlinked cases with symptoms who are isolated on the same day that symptoms occurred would have an isolation time of 0.

(2) Number of COVID-19 Cases in Hospitals and Community Care Facilities

Figure 2.1: Summary of Confirmed Cases by Status in the Past 14 Days

Press Release Date	Currently Admitted in Hospitals		In Care Facilities ⁹	Total Recovered		Total Demised	Total
	ICU	General Wards		Completed Isolation	Discharged from Hospital		
28-Jun	1	183	5,741	35,756	1,752	26	43,459
29-Jun	1	196	5,453	36,224	1,761	26	43,661
30-Jun	1	214	5,166	36,734	1,766	26	43,907
1-Jul	1	208	4,876	37,238	1,773	26	44,122
2-Jul	1	200	4,654	37,645	1,784	26	44,310
3-Jul	1	222	4,461	37,980	1,789	26	44,479
4-Jul	2	202	4,317	38,317	1,800	26	44,664
5-Jul	2	210	4,121	38,627	1,814	26	44,800
6-Jul	2	206	4,032	38,892	1,825	26	44,983
7-Jul	1	218	3,893	39,171	1,831	26	45,140
8-Jul	1	213*	3,734	39,482	1,841	26	45,297*
9-Jul	1	196	3,554	39,793	1,852	26	45,422
10-Jul	1	202	3,604	39,925	1,855	26	45,613
11-Jul	1	191	3,539	40,151	1,875	26	45,783

* 1 case has been removed after further investigations revealed that he did not fulfil the confirmed case definition

⁹ Community Care Facilities (i.e. D'Resort, EXPO, Changi Exhibition Centre, Big Box), Private Hospitals (i.e. Concord International Hospital, Mt Elizabeth Hospital, Gleneagles Hospital, Mt Elizabeth Novena Hospital, Parkway East Hospital), Community Hospitals (i.e. Bright Vision Hospital, St. Andrew's Community Hospital, Jurong Community Hospital) and other care facilities.

(3) Number of Stay-Home-Notice (SHN) Issued

Figure 3.1: Daily Number of SHN issued

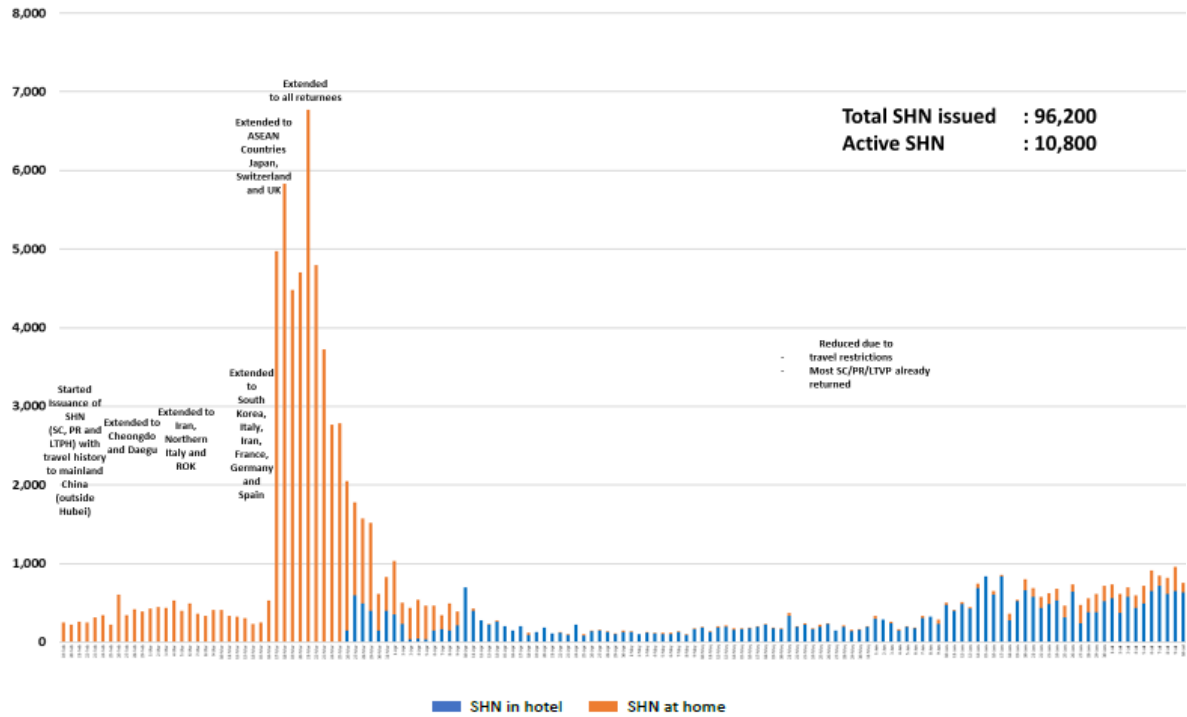
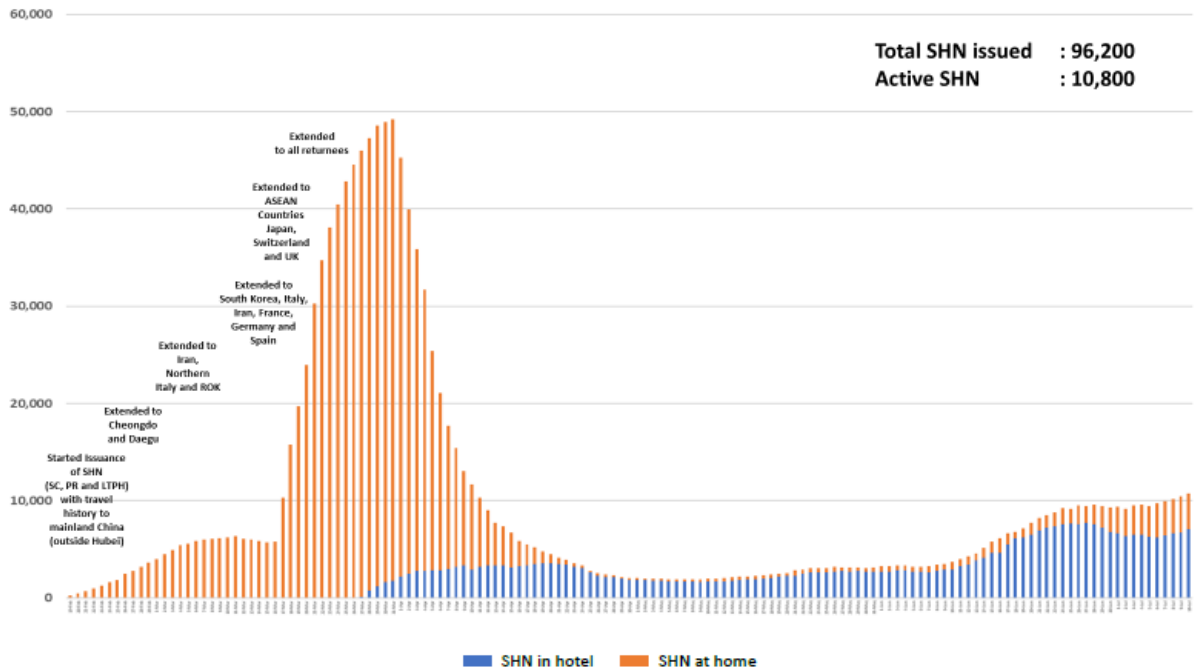


Figure 3.2: Active Stock Number of SHN (Home) and SHN (Hotel)



(4) Number of Quarantine Order (QO) Issued

Figure 4.1: Daily Number of QOs Issued

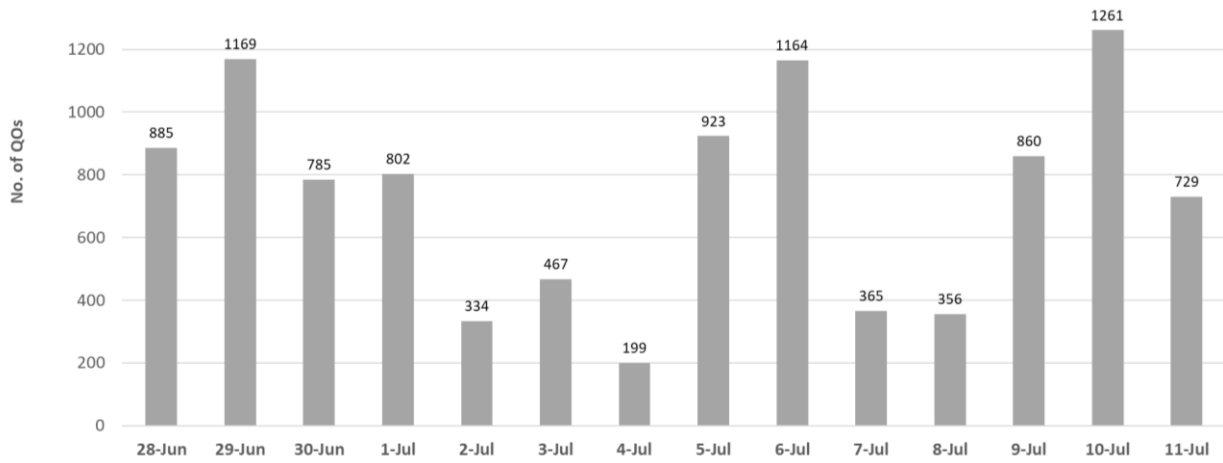


Figure 4.2: Active Number of Persons Under Quarantine (PUQs)

