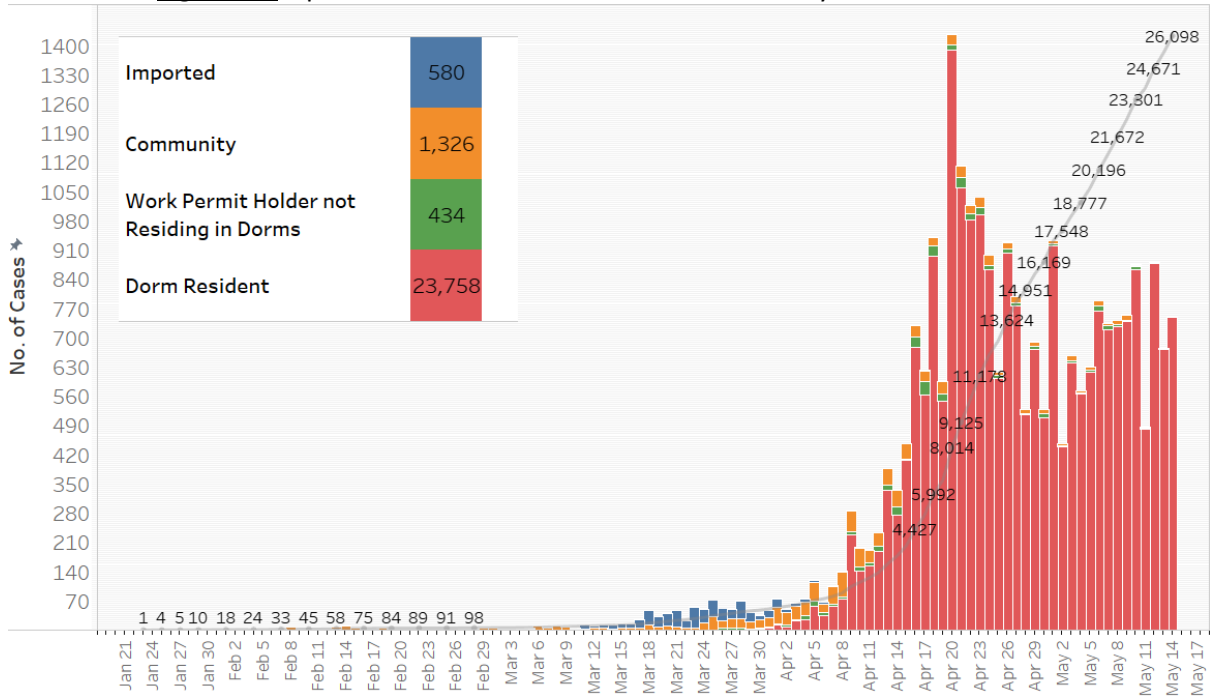


**14 May 2020 Daily Report on COVID-19****(1) Number of COVID-19 Cases****Figure 1.1:** Number of Cases Reported over the Past 14 Days

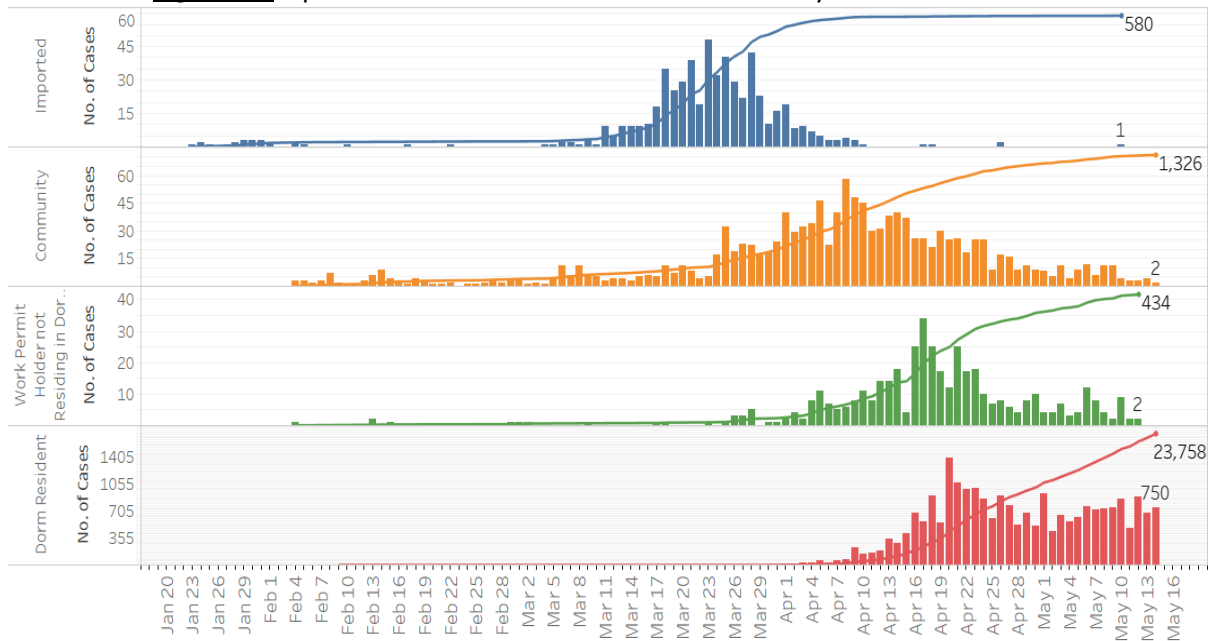
Press Release Date	Imported	Non-Imported Cases																Total Cases
		Community Cases (residents & pass holders excluding work permit holders and dorm residents)										Work permit holders not residing in dorms				Dorm Residents		
		Linked Cases				Unlinked Cases <sup>1</sup>				Sub-Total	Incidence Rate (per 100,000)	Linked Cases	Unlinked Cases <sup>2</sup>	Sub-Total	Incidence Rate (per 100,000)	No. of Cases	Incidence Rate (per 100,000)	
		SC/SPR	G or F	Visitor	Sub-Total	SC/SPR	G or F	Visitor	Sub-Total									
Before 1-May	579	584	127	4	715	436	78	4	518	1,233	-	257	116	373	-	13,984	-	16,169
1-May	0	1	2	0	3	4	1	0	5	8	0.17	2	2	4	0.60	920	290	932
2-May	0	2	1	0	3	2	0	0	2	5	0.11	2	2	4	0.60	438	140	447
3-May	0	8	1	0	9	2	0	0	2	11	0.23	6	1	7	1.1	639	200	657
4-May	0	2	0	0	2	2	0	0	2	4	0.080	0	3	3	0.50	565	180	572
5-May	0	4	1	0	5	3	1	0	4	9	0.19	0	4	4	0.60	618	190	631
6-May	0	8	1	0	9	3	0	0	3	12	0.25	7	5	12	1.8	764	240	788
7-May	0	2	1	0	3	2	1	0	3	6	0.13	3	5	8	1.2	720	220	734
8-May	0	6	1	0	7	4	0	0	4	11	0.23	1	3	4	0.60	727	230	742
9-May	0	7	2	0	9	2	0	0	2	11	0.23	2	0	2	0.30	740	230	753
10-May	1	2	1	0	3	0	1	0	1	4	0.080	8	1	9	1.4	862	270	876
11-May	0	2	0	0	2	0	1	0	1	3	0.060	1	1	2	0.30	481	150	486
12-May	0	1	0	0	1	2	0	0	2	3	0.060	2	0	2	0.30	879	270	884
13-May	0	1	0	0	1	1	2	0	3	4	0.080	0	0	0	0	671	210	675
14-May	0	2	0	0	2	0	0	0	0	2	0.040	0	0	0	0	750	230	752
Total since start of outbreak	580	632	138	4	774	463	85	4	552	1,326	-	291	143	434	-	23,758	-	26,098
Population at risk <sup>3</sup>										4,717,000				664,000		323,000		5,704,000
Prevalence										0.03%				0.07%		7.36%		0.46%

<sup>1</sup> Includes cases pending epi-investigation.<sup>2</sup> Includes cases pending epi-investigation.<sup>3</sup> Population at risk for community cases includes SC/PRs and other types of passes holders not residing in dormitories. Source: MOM and Singstat.

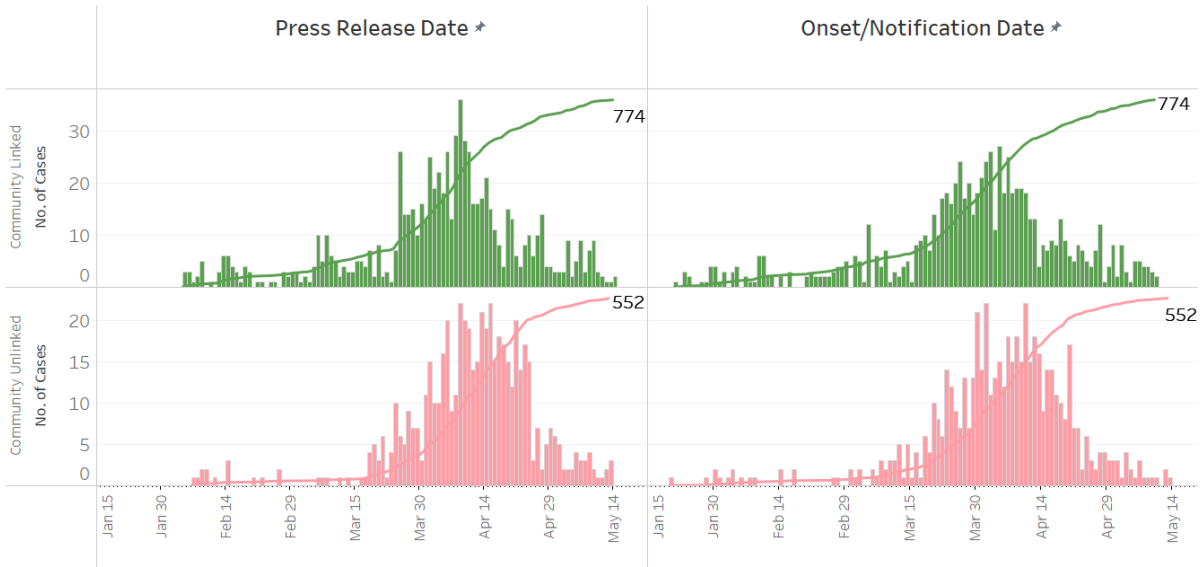
**Figure 1.2:** Epidemic Curve of the COVID-19 Outbreak by Press Release Date



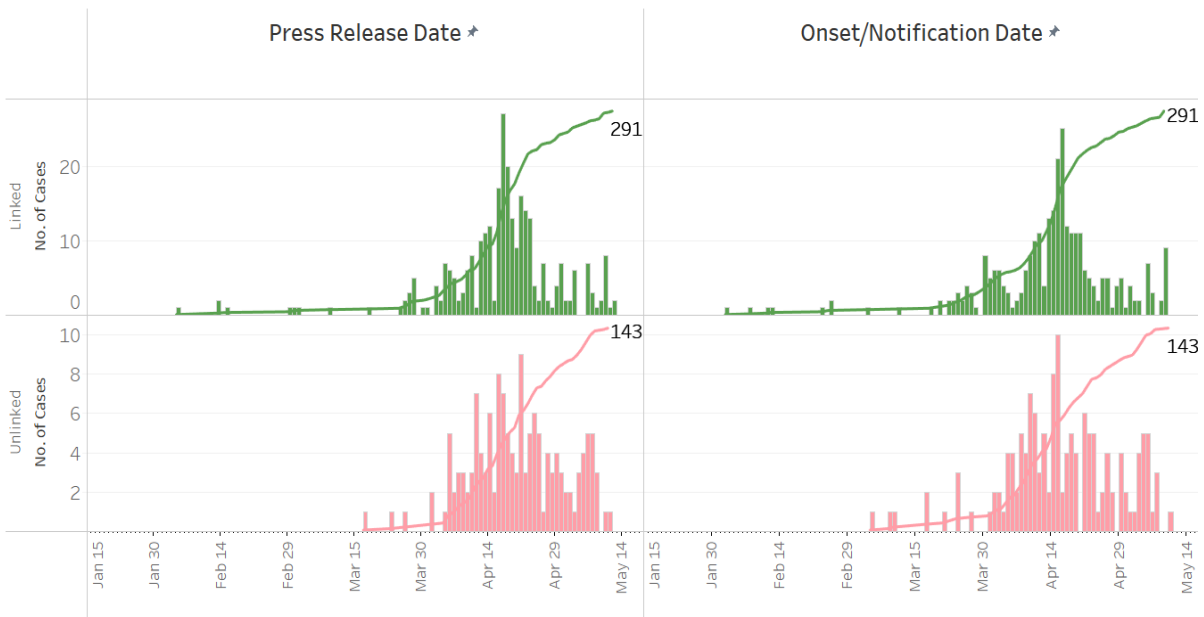
**Figure 1.3:** Epidemic Curve of the COVID-19 Outbreak by Press Release Date



**Figure 1.4:** Epidemic Curve of Linked and Unlinked Cases among the Community by Press Release Date (left panel) and by Symptom Onset or Notification Date<sup>4</sup> (right panel)



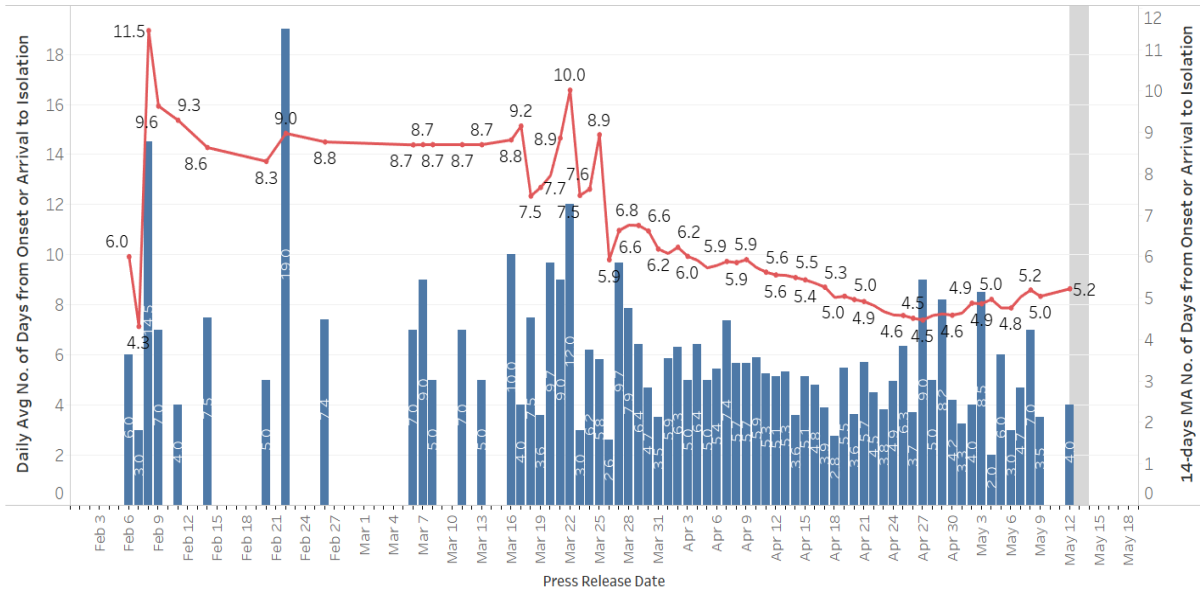
**Figure 1.5:** Epidemic Curve of Linked and Unlinked Cases among Work Permit Holders not Residing in Dorms by Press Release Date (left panel) and by Symptom Onset or Notification Date<sup>5</sup> (right panel)



<sup>4</sup> Date of notification was used for cases that did not display any symptoms. The numbers with onset in the past few days may see an increase as more cases are notified.

<sup>5</sup> Date of notification was used for cases that did not display any symptoms. The numbers with onset in the past few days may see an increase as more cases are notified.

**Figure 1.6:** Average Number of Days from Onset of Symptoms to Isolation (QO, MOH contact, notification or admission) for Community Unlinked Cases in Each Day<sup>6</sup>



Line represents the 14-day moving average, Bar represents the daily average.

<sup>6</sup> Area in grey demarcates the data points for the past 3 days where some cases are still pending investigation. The bar chart shows the daily average number of days from onset date to isolation, while the line chart shows the moving average for the past 14 days. Both charts exclude cases with missing onset dates in the computation of the average.

**(2) Number of COVID-19 Cases in Hospitals and Community Care Facilities**

**Figure 2.1:** Summary of Confirmed Cases by Status in the Past 14 Days

Press Release Date	Currently Admitted in Hospitals		In Care Facilities <sup>7</sup>	Total Recovered		Total Demised	Total
	ICU	General Wards		Completed Isolation	Discharged from Hospital		
1-May	23	1,741	14,053	630	638	16	<b>17,101</b>
2-May	24	1,686	14,474	685	662	17	<b>17,548</b>
3-May	22	1,608	15,149	722	686	18	<b>18,205</b>
4-May	25	1,466	15,812	744	713	18	<b>18,778</b>
5-May	24	1,560	16,289	786	733	18	<b>19,410</b>
6-May	23	1,439	17,082	860	774	20	<b>20,198</b>
7-May	19	1,357	17,831	896	816	20	<b>20,939</b>
8-May	22	1,223	18,402	1,205	835	20	<b>21,707</b>
9-May	23	1,101	19,020	1,442	854	20	<b>22,460</b>
10-May	22	1,075	19,498	1,836	885	20	<b>23,336</b>
11-May	24	1,069	19,448	2,322	903	21	<b>23,787</b>
12-May	20	1,112	19,667	2,927	924	21	<b>24,671</b>
13-May	19	1,018	19,479	3,858	951	21	<b>25,346</b>
14-May	20	1,052	19,032	4,978	995	21	<b>26,098</b>

<sup>7</sup> Community Care Facilities (i.e. D'Resort, EXPO, Changi Exhibition Centre), Private Hospitals (i.e. Concord International Hospital, Mt Elizabeth Hospital, Gleneagles Hospital, Mt Alvernia Hospital, Mt Elizabeth Novena Hospital, Parkway East Hospital, Farrer Park Hospital), Community Hospitals (i.e. Bright Vision Hospital, St. Andrew's Community Hospital, Yishun Community Hospital, Jurong Community Hospital, Sengkang Community Hospital) and other care facilities.

(3) Number of Stay-Home-Notice (SHN) Issued

Figure 3.1: Daily Number of SHN issued

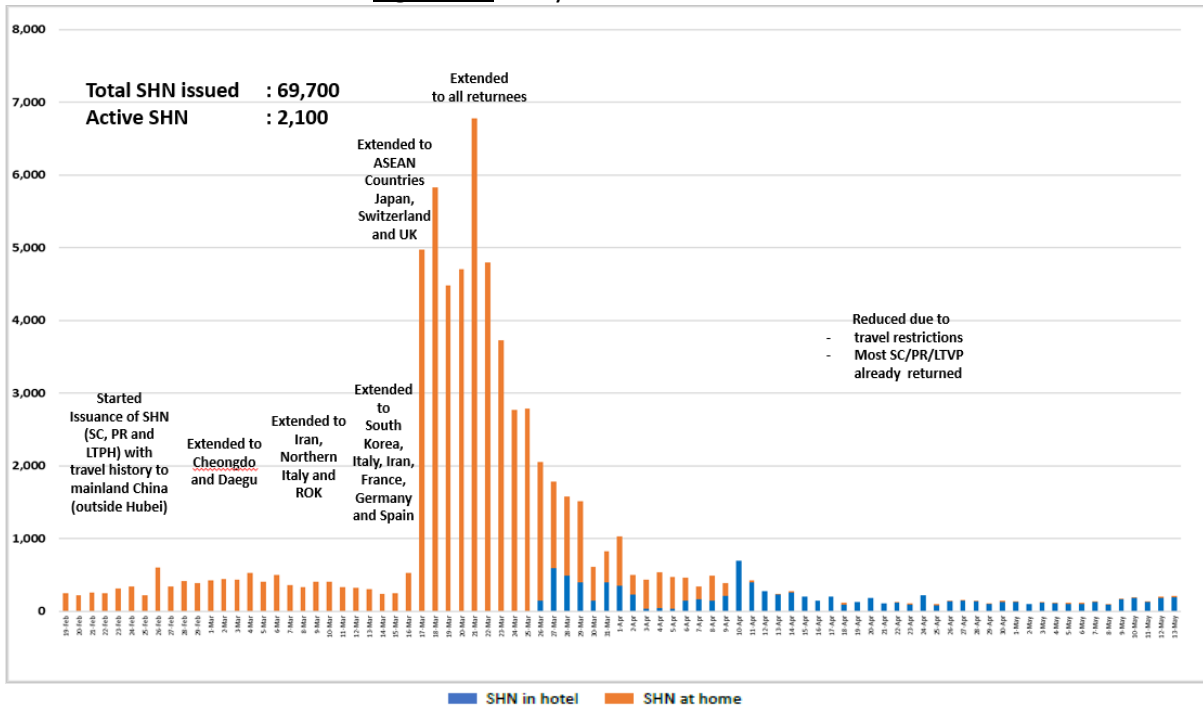
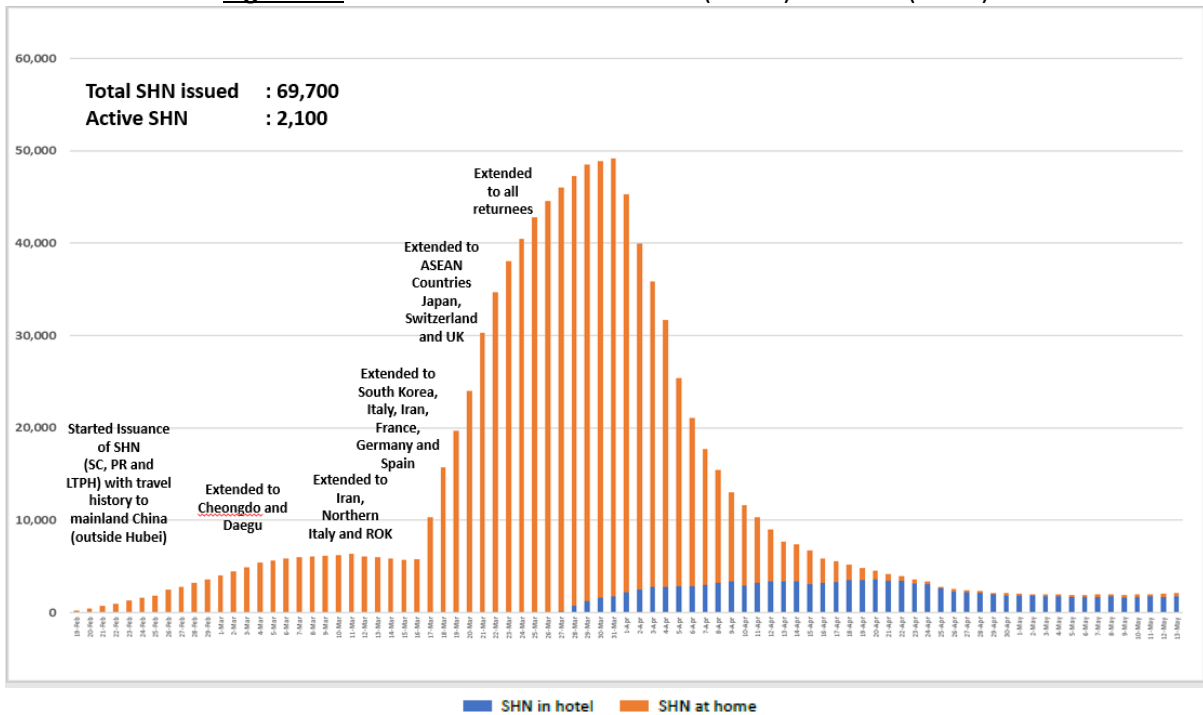
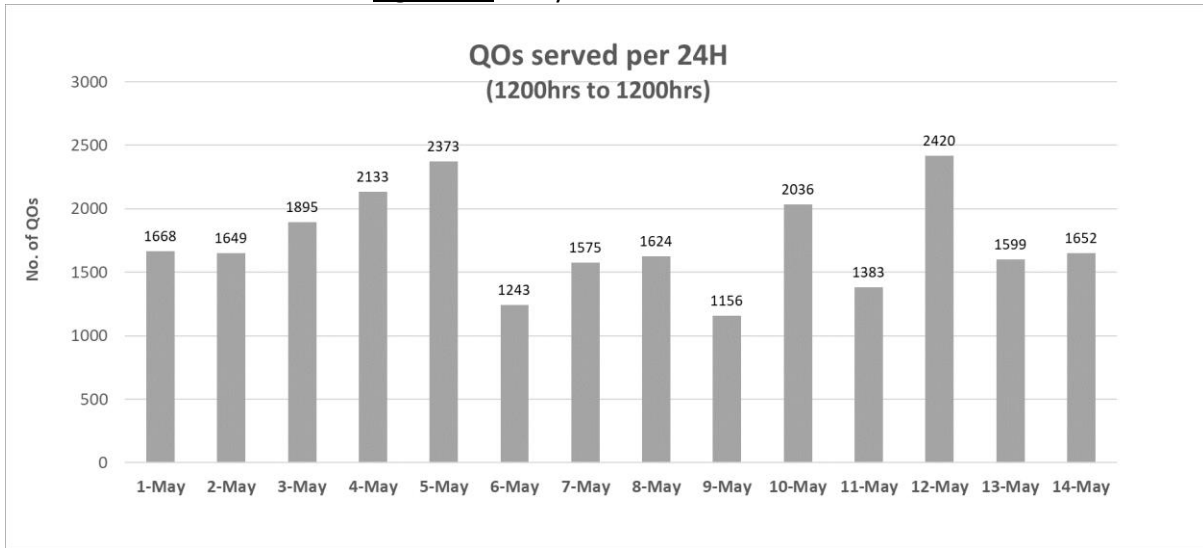


Figure 3.2: Active Stock Number of SHN (Home) and SHN (Hotel)



**(4) Number of Quarantine Order (QO) Issued**

**Figure 4.1:** Daily Number of QOs Issued



**Figure 4.2:** Active Number of Persons Under Quarantine (PUQs)

