

18 July 2020 Daily Report on COVID-19**(1) Number of COVID-19 Cases****Figure 1.1:** Number of Cases Reported over the Past 14 Days

Press Release Date	Imported	Non-Imported Cases													All Cases	
		Community Cases ¹										Dorm Residents				
		Linked Cases					Unlinked Cases ²					Sub-Total	Incidence Rate ³ (per 100,000)	No. of Cases		Incidence Rate ⁴ (per 100,000)
		SC/PR	G or F (work permit)	G or F (other pass types) ⁴	Visitor	Sub-Total	SC/PR	G or F (work permit)	G or F (other pass types) ⁵	Visitor	Sub-Total					
Before 5-Jul	591	781	296	160	4	1,241	464	131	80	5	680	1,921	-	42,152	-	44,664
5-Jul	7	4	5	1	0	10	2	5	1	0	8	18	0.33	111	34	136
6-Jul	3	2	11	1	0	14	1	8	0	0	9	23	0.43	157	49	183
7-Jul	3	8	3	0	0	11	3	3	2	0	8	19	0.35	134	41	156
8-Jul	3	2	1	0	0	3	2	2	2	0	6	9	0.17	146	45	158
9-Jul	1	0	8	1	0	9	4	6	2	0	12	21	0.39	103	32	125
10-Jul	1	2	4	1	0	7	4	1	3	0	8	15	0.28	174	54	190
11-Jul	1	6	3	2	0	11	1	8	4	0	13	24	0.45	145	45	170
12-Jul	1	0	0	0	0	0	1	0	0	0	1	1	0.019	176	54	178
13-Jul	5	2	0	2	0	4	0	3	4	0	7	11	0.20	306	95	322
14-Jul	2	1	1	1	0	3	0	2	2	0	4	7	0.13	338	100	347
15-Jul	5	0	4	1	0	5	0	8	2	0	10	15	0.28	229	71	249
16-Jul	4	1	0	3	0	4	1	2	4	0	7	11	0.20	233	72	248
17-Jul	3	4	1	2	0	7	2	0	0	0	2	9	0.17	315	98	327
18-Jul	8	2	0	1	0	3	3	1	0	0	4	7	0.13	187	58	202
Total since start of outbreak	638	815	337	176	4	1,332	488	180	106	5	779	2,111	-	44,906	-	47,655
Population at risk ⁵												5,381,000		323,000		5,704,000
Prevalence												0.04%		13.90%		0.84%

¹ Previously we had tracked the work permit holders living outside dormitories as a separate category, and put a large number of these workers on Stay Home Notices (SHN). The SHN for these workers has since expired. Hence we have now updated the definition of "Cases in the Community" to include all cases (including amongst work permit holders) that are detected outside of the dormitories.

² Includes cases pending epi-investigation.

³ Incidence rates are rounded to two significant figures.

⁴ Includes Training Work Permit (TWP) holders.

⁵ Population at risk for community cases includes SC/PRs and work pass holders not residing in dormitories. Source: MOM and Singstat.

Figure 1.2: Epidemic Curve of the COVID-19 Outbreak by Press Release Date

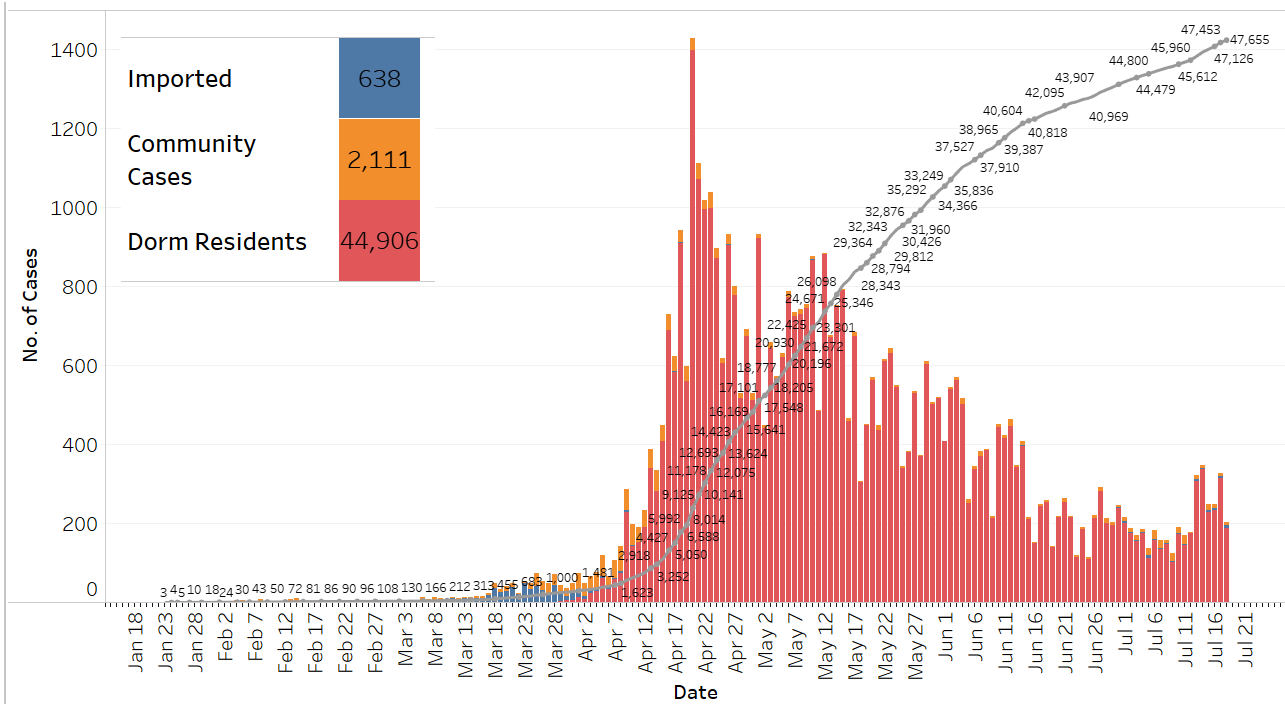
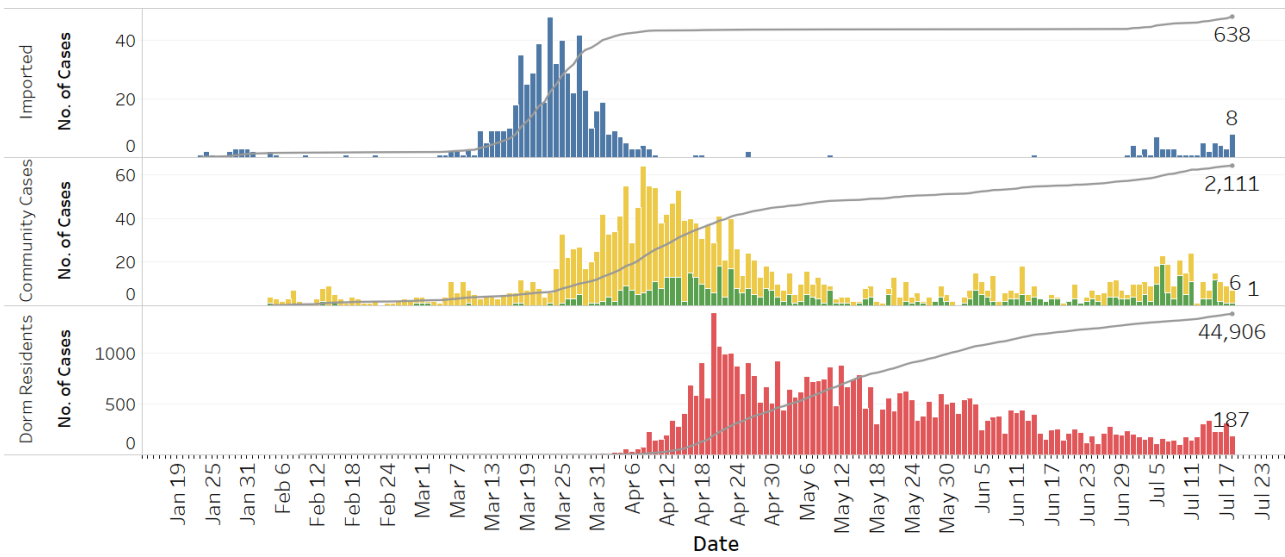


Figure 1.3: Epidemic Curve of the COVID-19 Outbreak by Press Release Date



COVID-19 Cases

- Imported
- Community Cases: SC/PR + G or F (other pass types) + Visitors
- Community Cases: G or F (work permit)
- Dorm Residents

Figure 1.4: Epidemic Curve of Linked and Unlinked Cases among the Community by Press Release Date (left panel) and by Symptom Onset or Notification Date⁶ (right panel)

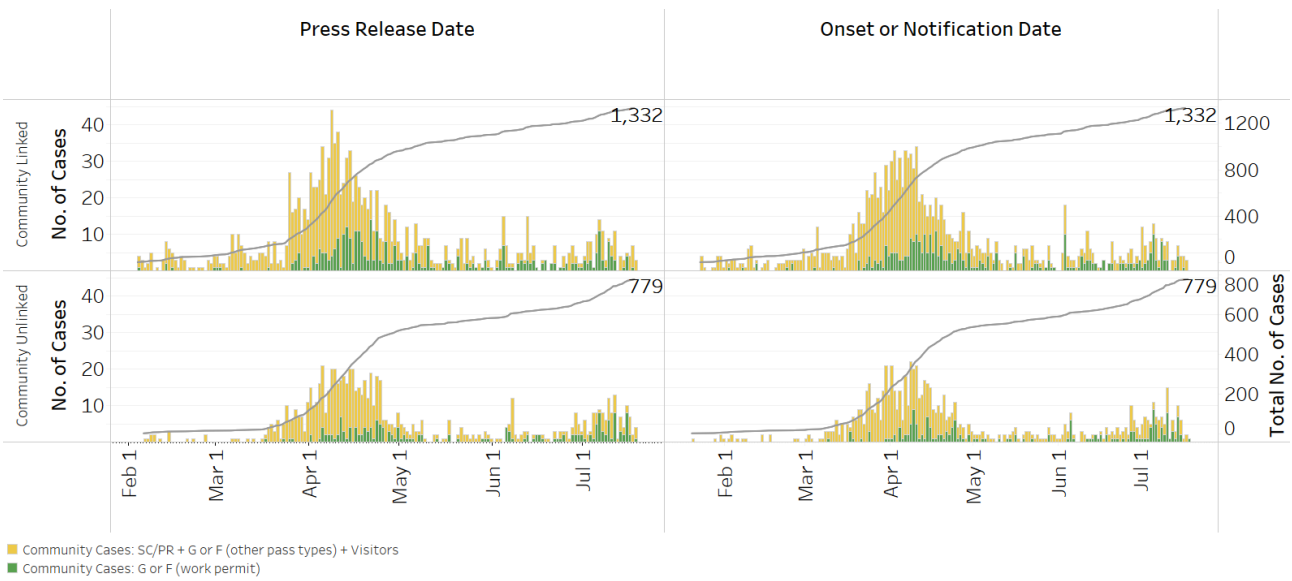
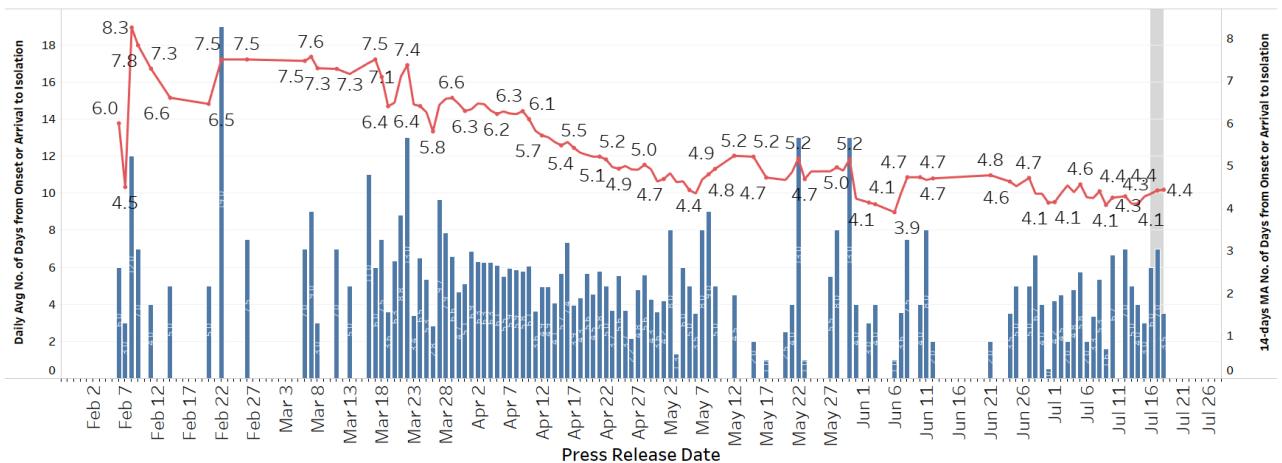


Figure 1.5: Average Number of Days from Onset of Symptoms to Isolation (QO, MOH contact, notification or admission) for Community Unlinked Cases in Each Day⁷



Line represents the 14-day moving average; Bar represents the daily average⁸

⁶ Date of notification was used for cases that did not display any symptoms. The numbers with onset in the past few days may see an increase as more cases are notified.

⁷ Area in grey demarcates the data points for the past 3 days where some cases are still pending investigation. The bar chart shows the daily average number of days from onset date to isolation, while the line chart shows the moving average for the past 14 days. Both charts exclude cases with missing onset dates in the computation of the average.

⁸ Asymptomatic community unlinked cases are not reflected in this chart. Community unlinked cases with symptoms who are isolated on the same day that symptoms occurred would have an isolation time of 0.

(2) Number of COVID-19 Cases in Hospitals and Community Care Facilities**Figure 2.1:** Summary of Confirmed Cases by Status in the Past 14 Days

Press Release Date	Currently Admitted in Hospitals				In Care Facilities ⁹	Total Recovered		Total Demised	Total
	ICU			General Wards		Completed Isolation	Discharged from Hospital		
	SC/PR	Others	Total						
5-Jul	2	0	2	210	4,121	38,627	1,814	26	44,800
6-Jul	1	1	2	206	4,032	38,892	1,825	26	44,983
7-Jul	1	0	1	218	3,893	39,171	1,831	26	45,140
8-Jul	1	0	1	213*	3,734	39,482	1,841	26	45,297*
9-Jul	1	0	1	196	3,554	39,793	1,852	26	45,422
10-Jul	1	0	1	202	3,603*	39,925	1,855	26	45,612*
11-Jul	1	0	1	191	3,538	40,151	1,875	26	45,782
12-Jul	1	0	1	180	3,468	40,401	1,884	26	45,960
13-Jul	1	0	1	165	3,549	40,653	1,888	26	46,282
14-Jul	0	0	0	161	3,704	40,842	1,895	27	46,629
15-Jul	0	0	0	159	3,704	41,081	1,907	27	46,878
16-Jul	0	0	0	146	3,697	41,339	1,917	27	47,126
17-Jul	0	0	0	165	3,684	41,654	1,923	27	47,453
18-Jul	0	0	0	169	3,626	41,906	1,927	27	47,655

* 1 case on each day were removed after further investigations revealed that they did not fulfil the confirmed case definition.

⁹ Community Care Facilities (i.e. D'Resort, EXPO, Changi Exhibition Centre, Big Box), Private Hospitals (i.e. Concord International Hospital, Mt Elizabeth Hospital, Gleneagles Hospital, Mt Elizabeth Novena Hospital, Parkway East Hospital), Community Hospitals (i.e. Bright Vision Hospital, St. Andrew's Community Hospital, Jurong Community Hospital) and other care facilities.

(3) Number of Stay-Home-Notice (SHN) Issued

Figure 3.1: Daily Number of SHN issued

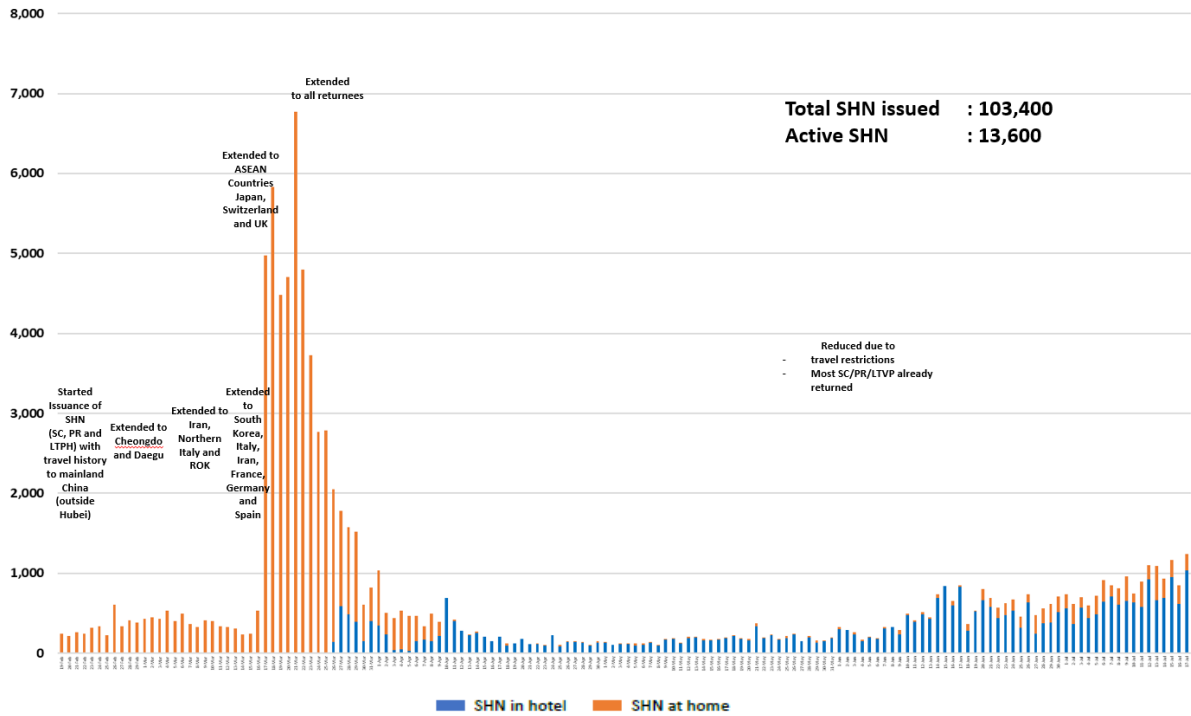
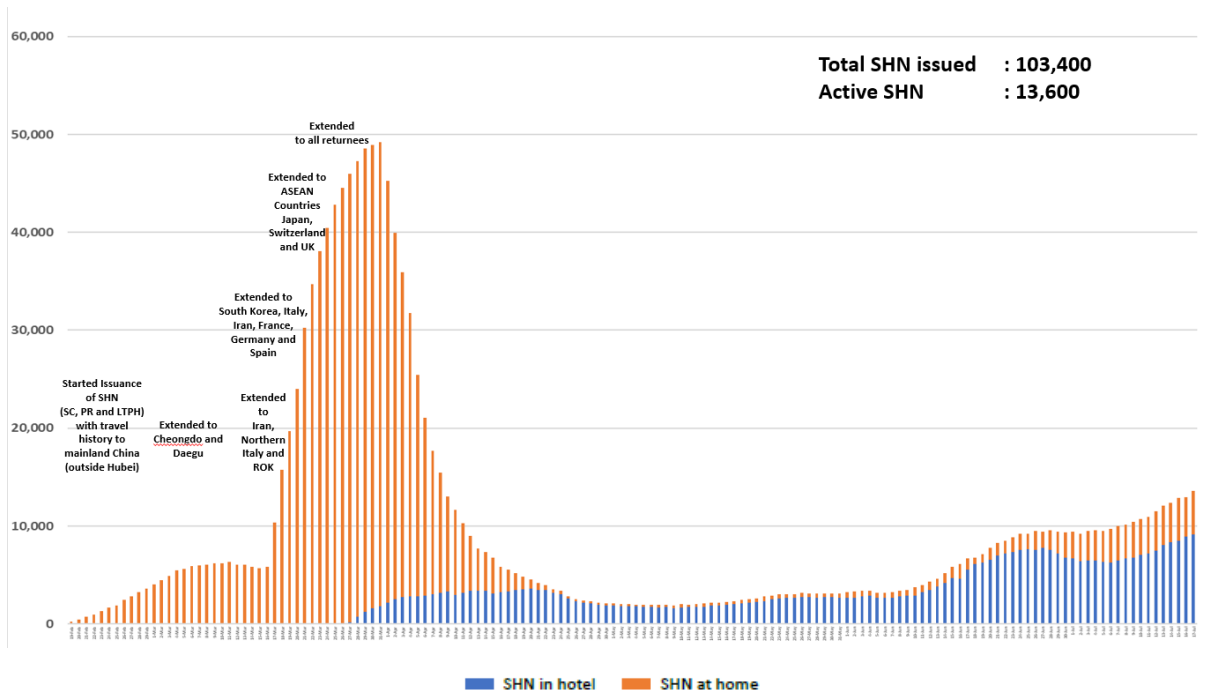


Figure 3.2: Active Stock Number of SHN (Home) and SHN (Hotel)



(4) Number of Quarantine Order (QO) Issued

Figure 4.1: Daily Number of QOs Issued

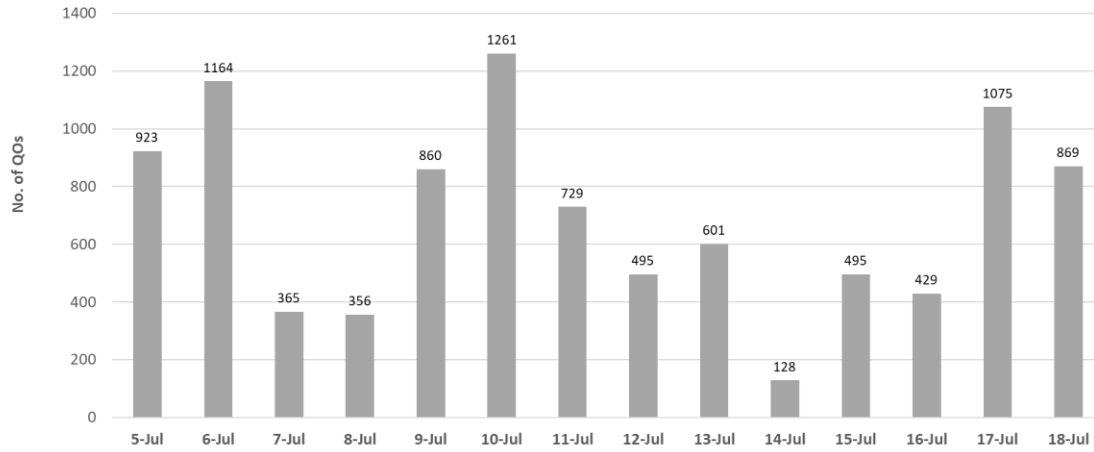


Figure 4.2: Active Number of Persons Under Quarantine (PUQs)

