

**19 June 2020 Daily Report on COVID-19****(1) Number of COVID-19 Cases****Figure 1.1:** Number of Cases Reported over the Past 14 Days

Press Release Date	Imported	Non-Imported Cases														All Cases
		Community Cases <sup>1</sup>										Dorm Residents				
		Linked Cases					Unlinked Cases <sup>2</sup>					Sub-Total	Incidence Rate (per 100,000)	No. of Cases	Incidence Rate (per 100,000)	
		SC/PR	G or F (work permit)	G or F (other pass types) <sup>3</sup>	Visitor	Sub-Total	SC/PR	G or F (work permit)	G or F (other pass types) <sup>4</sup>	Visitor	Sub-Total					
Before 6-Jun	580	740	245	138	4	1,127	420	106	65	4	595	1,722	-	34,881	-	37,183
6-Jun	0	1	0	0	0	1	2	4	0	0	6	7	0.13	337	100	344
7-Jun	0	0	2	1	0	3	10	0	1	0	11	14	0.26	369	110	383
8-Jun	0	0	0	0	0	0	1	0	1	0	2	2	0.037	384	120	386
9-Jun	0	0	1	3	0	4	0	1	1	0	2	6	0.11	212	66	218
10-Jun	0	2	3	0	0	5	1	0	1	0	2	7	0.13	444	140	451
11-Jun	0	0	2	1	0	3	1	1	1	0	3	6	0.11	416	130	422
12-Jun	0	7	4	4	0	15	1	1	1	0	3	18	0.33	445	140	463
13-Jun	0	1	2	1	0	4	1	0	0	0	1	5	0.093	342	110	347
14-Jun	1	3	1	1	0	5	1	3	0	0	4	9	0.17	397	120	407
15-Jun	0	0	1	0	0	1	0	2	0	0	2	3	0.056	211	65	214
16-Jun	0	0	0	0	0	0	0	2	0	0	2	2	0.037	149	46	151
17-Jun	0	1	2	0	0	3	1	1	0	0	2	5	0.093	242	75	247
18-Jun	0	0	2	0	0	2	1	1	0	0	2	4	0.074	253	78	257
19-Jun	0	0	0	0	0	0	0	0	0	1	1	1	0.019	141	44	142
Total since start of outbreak	581	755	265	149	4	1,173	440	122	71	5	638	1,811	-	39,223	-	41,615
Population at risk <sup>4</sup>												5,381,000		323,000		5,704,000
Prevalence												0.03%		12.14%		0.73%

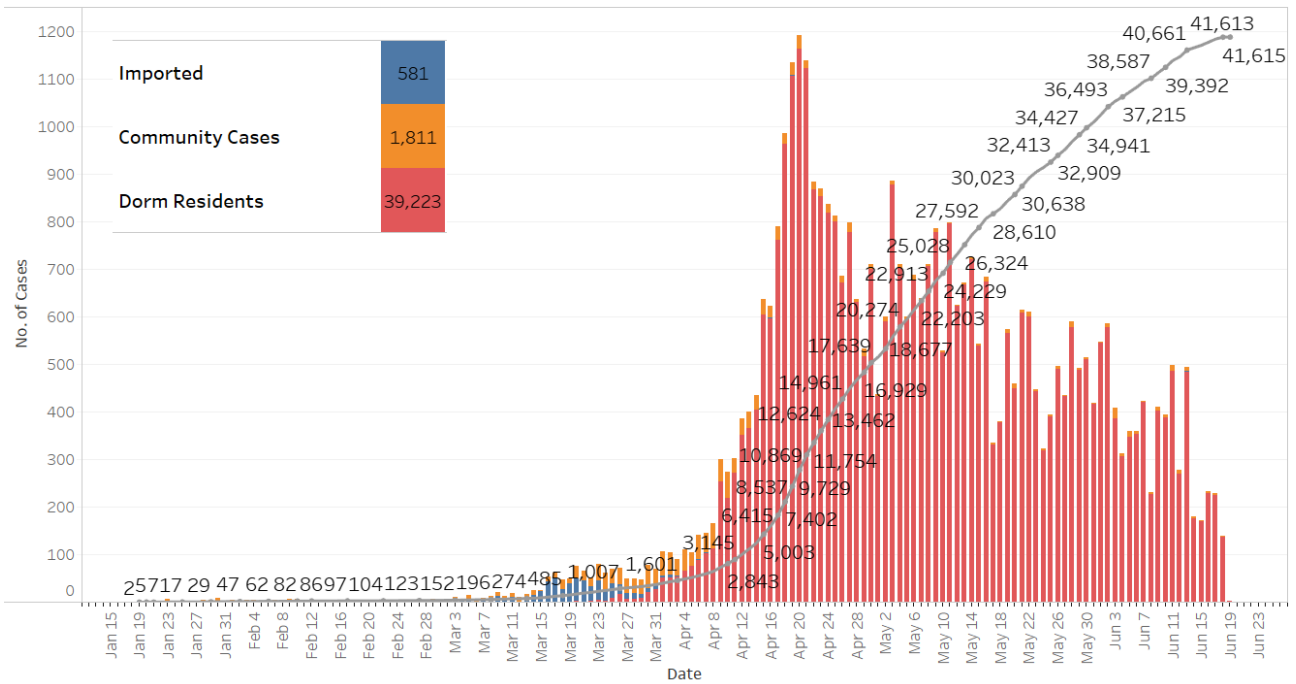
<sup>1</sup> Previously we had tracked the work permit holders living outside dormitories as a separate category, and put a large number of these workers on Stay Home Notices (SHN). The SHN for these workers has since expired. Hence we have now updated the definition of "Cases in the Community" to include all cases (including amongst work permit holders) that are detected outside of the dormitories.

<sup>2</sup> Includes cases pending epi-investigation.

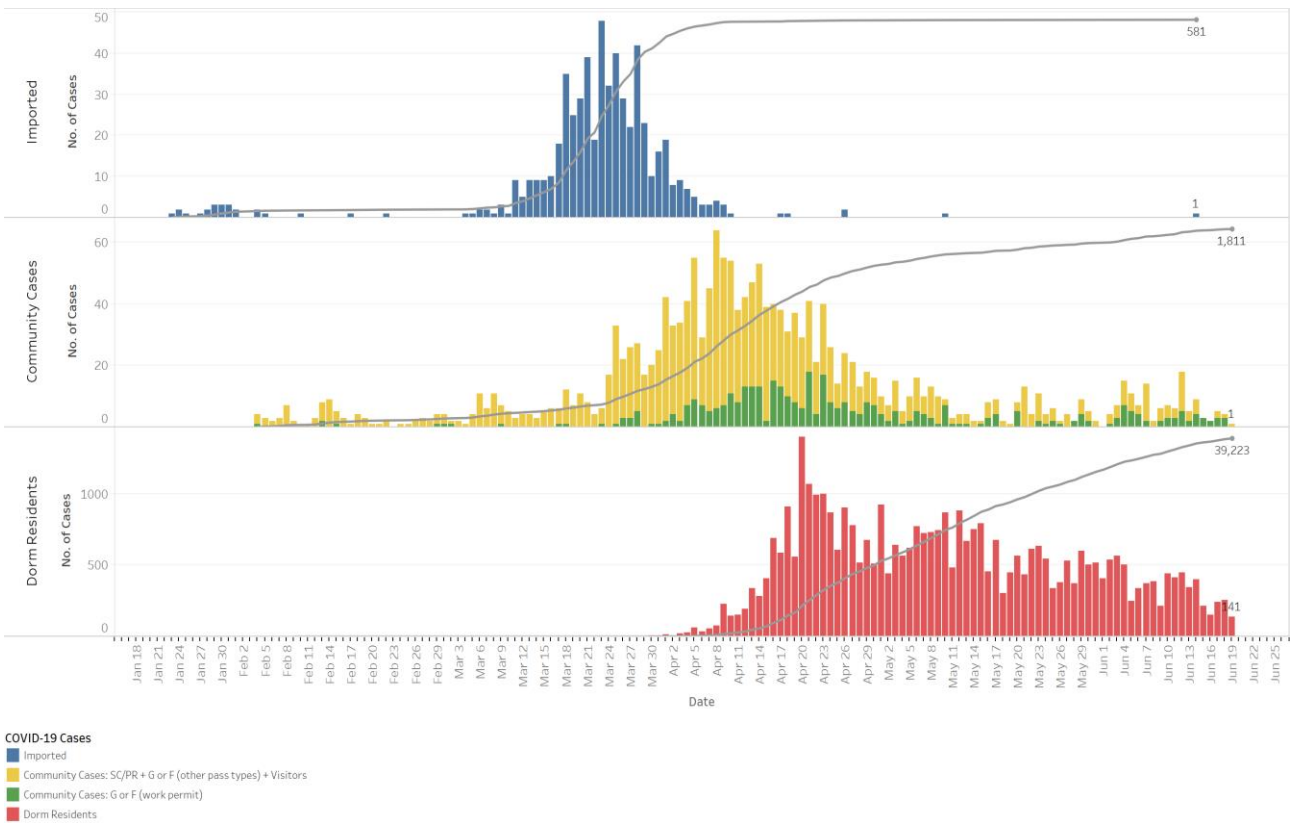
<sup>3</sup> Includes Training Work Permit (TWP) holders.

<sup>4</sup> Population at risk for community cases includes SC/PRs and work pass holders not residing in dormitories. Source: MOM and Singstat.

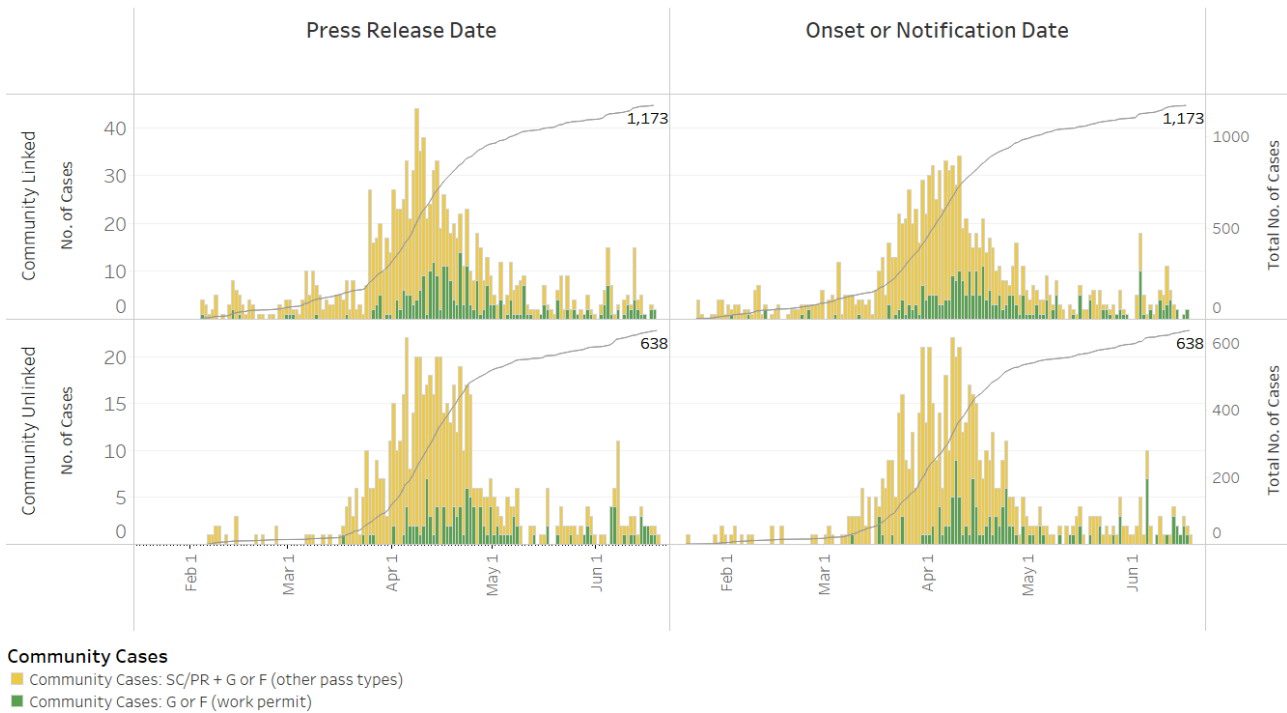
**Figure 1.2:** Epidemic Curve of the COVID-19 Outbreak by Press Release Date



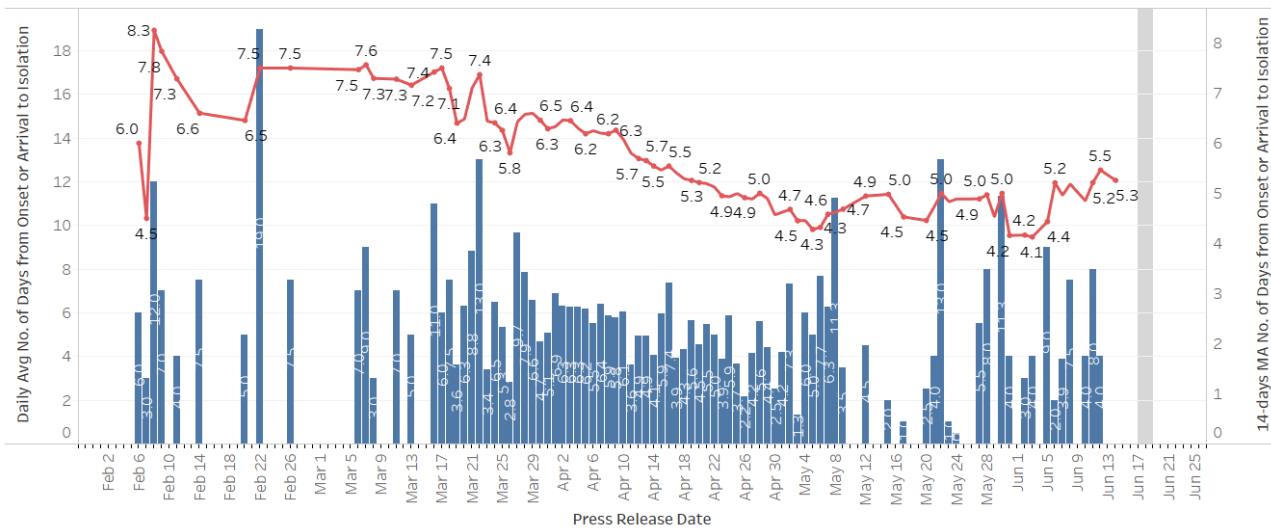
**Figure 1.3:** Epidemic Curve of the COVID-19 Outbreak by Press Release Date



**Figure 1.4:** Epidemic Curve of Linked and Unlinked Cases among the Community by Press Release Date (left panel) and by Symptom Onset or Notification Date<sup>5</sup> (right panel)



**Figure 1.5:** Average Number of Days from Onset of Symptoms to Isolation (QO, MOH contact, notification or admission) for Community Unlinked Cases in Each Day<sup>6</sup>



*Line represents the 14-day moving average; Bar represents the daily average*

<sup>5</sup> Date of notification was used for cases that did not display any symptoms. The numbers with onset in the past few days may see an increase as more cases are notified.

<sup>6</sup> Area in grey demarcates the data points for the past 3 days where some cases are still pending investigation. The bar chart shows the daily average number of days from onset date to isolation, while the line chart shows the moving average for the past 14 days. Both charts exclude cases with missing onset dates in the computation of the average.

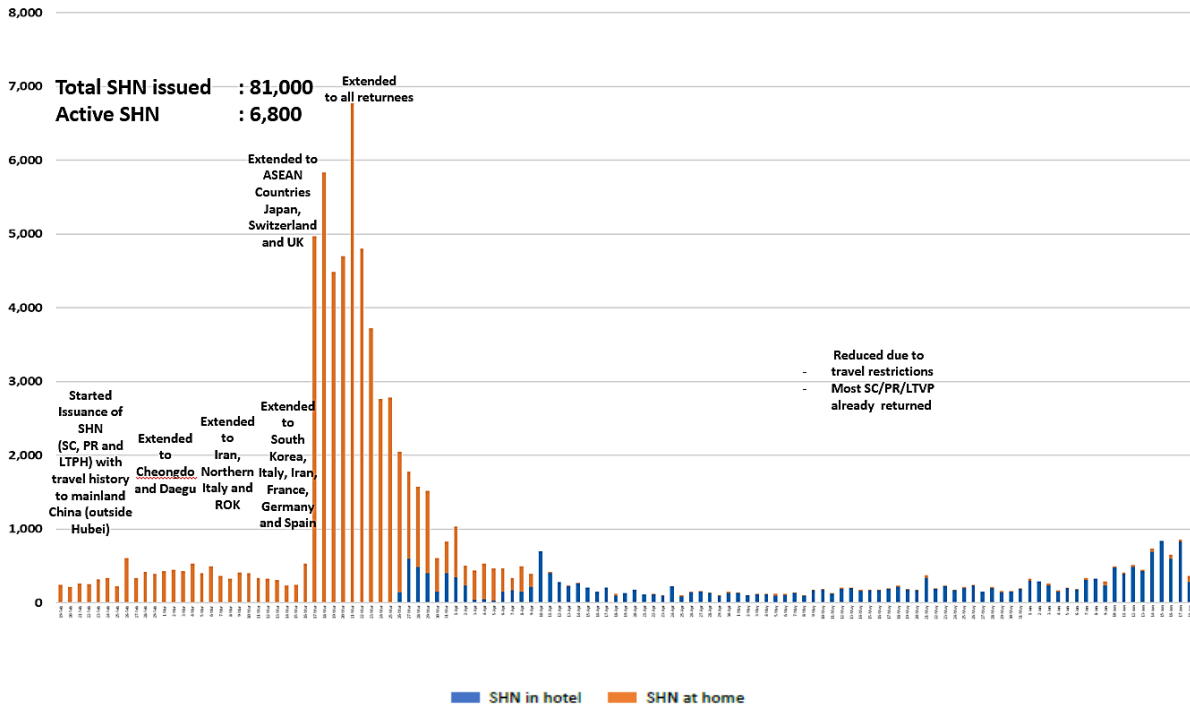
**(2) Number of COVID-19 Cases in Hospitals and Community Care Facilities****Figure 2.1:** Summary of Confirmed Cases by Status in the Past 14 Days

Press Release Date	Currently Admitted in Hospitals		In Care Facilities <sup>7</sup>	Total Recovered		Total Demised	Total
	ICU	General Wards		Completed Isolation	Discharged from Hospital		
6-Jun	4	304	12,635	23,041	1,518	25	<b>37,527</b>
7-Jun	3	292	12,704	23,361	1,525	25	<b>37,910</b>
8-Jun	4	265	12,634	23,823	1,545	25	<b>38,296</b>
9-Jun	3	245	12,364	24,316	1,561	25	<b>38,514</b>
10-Jun	3	220	12,185	24,948	1,584	25	<b>38,965</b>
11-Jun	2	225	11,849	25,689	1,597	25	<b>39,387</b>
12-Jun	2	237	11,546	26,434	1,606	25	<b>39,850</b>
13-Jun	1	227	11,135	27,191	1,617	26	<b>40,197</b>
14-Jun	2	236	10,751	27,961	1,628	26	<b>40,604</b>
15-Jun	2	241	10,183	28,731	1,635	26	<b>40,818</b>
16-Jun	2	267	9,511	29,516	1,647	26	<b>40,969</b>
17-Jun	2	255	8,995	30,277	1,661	26	<b>41,216</b>
18-Jun	2	223	8,510	31,046	1,666	26	<b>41,473</b>
19-Jun	2	210	7,918	31,781	1,678	26	<b>41,615</b>

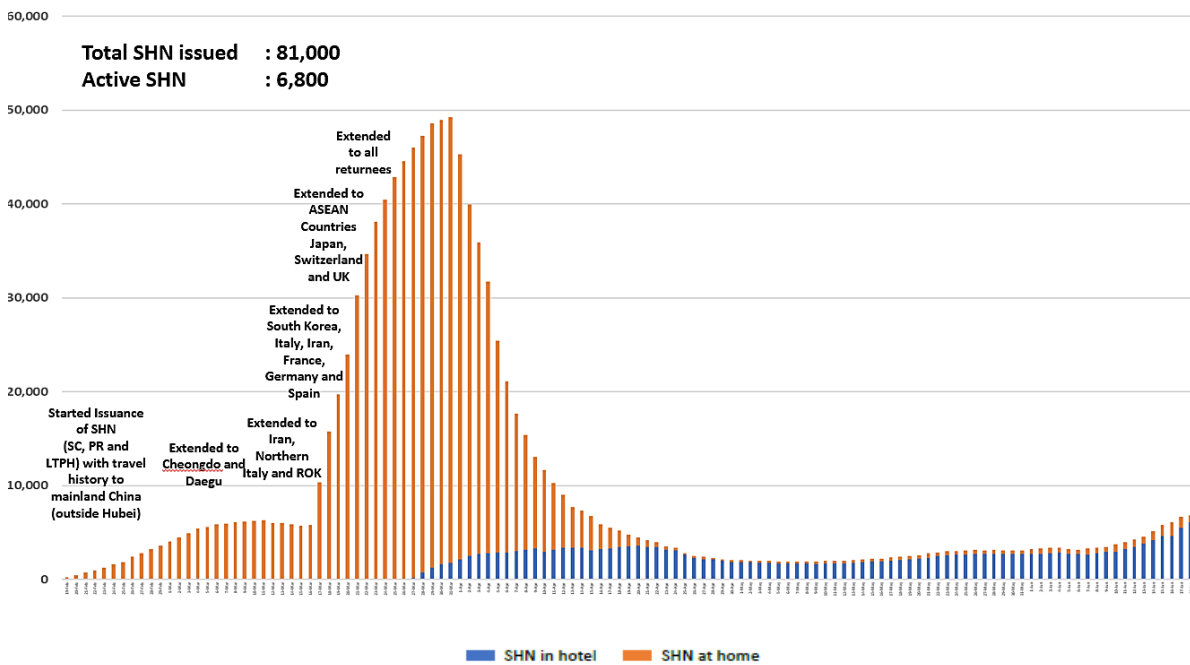
<sup>7</sup> Community Care Facilities (i.e. D'Resort, EXPO, Changi Exhibition Centre, Tuas South), Private Hospitals (i.e. Concord International Hospital, Mt Elizabeth Hospital, Gleneagles Hospital, Mt Alvernia Hospital, Mt Elizabeth Novena Hospital, Parkway East Hospital, Farrer Park Hospital), Community Hospitals (i.e. Bright Vision Hospital, St. Andrew's Community Hospital, Yishun Community Hospital, Jurong Community Hospital, Sengkang Community Hospital) and other care facilities.

### (3) Number of Stay-Home-Notice (SHN) Issued

**Figure 3.1:** Daily Number of SHN issued

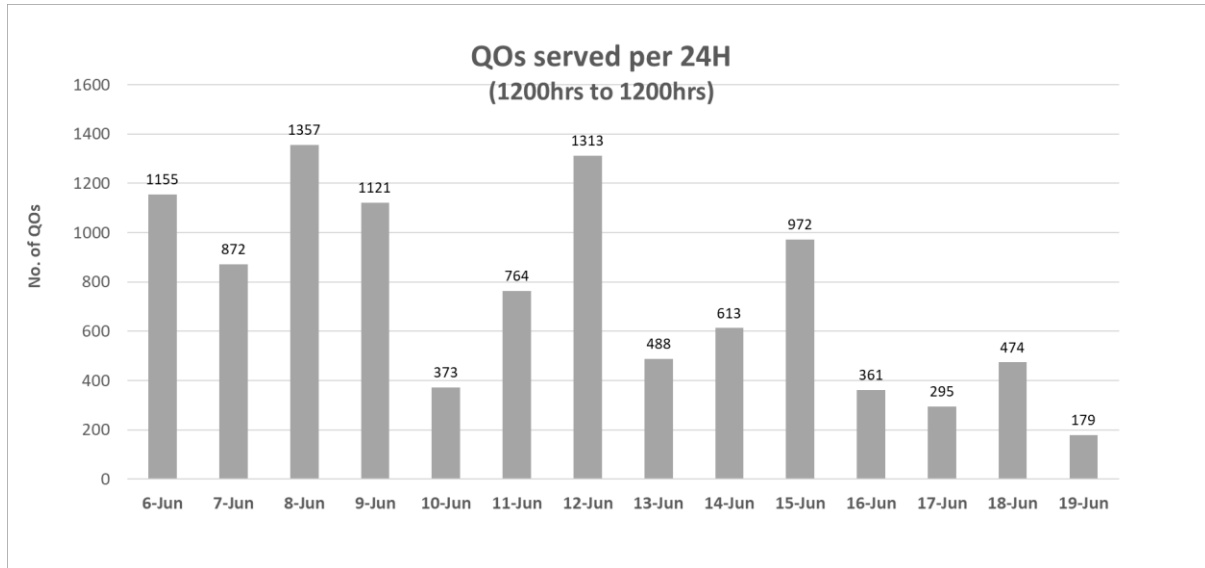


**Figure 3.2:** Active Stock Number of SHN (Home) and SHN (Hotel)

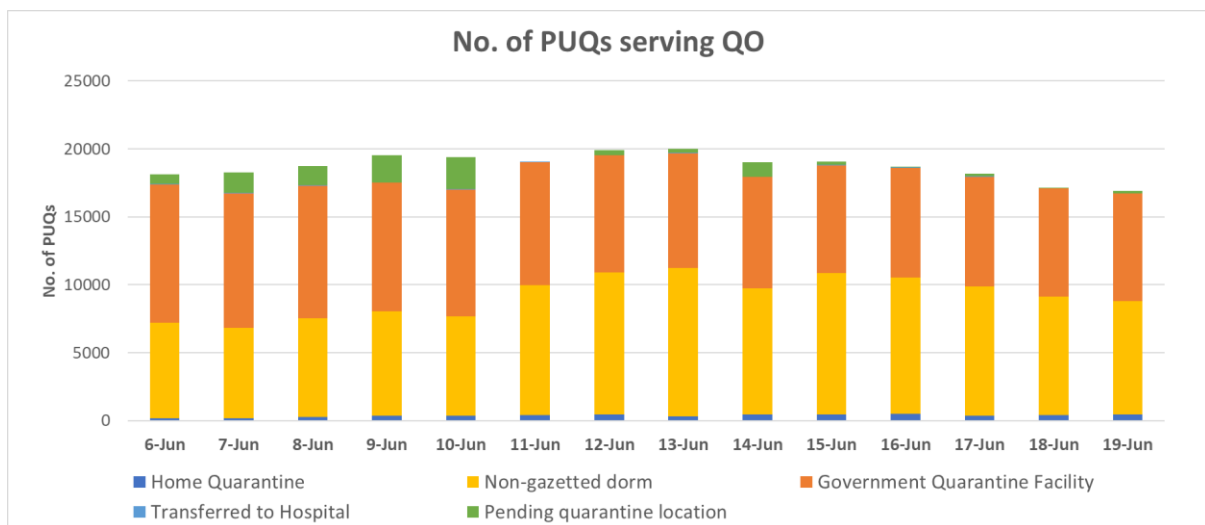


**(4) Number of Quarantine Order (QO) Issued**

**Figure 4.1:** Daily Number of QOs Issued



**Figure 4.2:** Active Number of Persons Under Quarantine (PUQs)<sup>8</sup>



<sup>8</sup> The number of PUQs at GQFs has been revised to align with Foreign Manpower Sub-Group & Tourists and Locals Sub-Group GQF Occupancy Status figures reported by MND.