

20 June 2020 Daily Report on COVID-19**(1) Number of COVID-19 Cases****Figure 1.1:** Number of Cases Reported over the Past 14 Days

Press Release Date	Imported	Non-Imported Cases														All Cases
		Community Cases ¹												Dorm Residents		
		Linked Cases					Unlinked Cases ²					Sub-Total	Incidence Rate (per 100,000)	No. of Cases	Incidence Rate (per 100,000)	
		SC/PR	G or F (work permit)	G or F (other pass types) ³	Visitor	Sub-Total	SC/PR	G or F (work permit)	G or F (other pass types) ⁴	Visitor	Sub-Total					
Before 7-Jun	580	741	245	138	4	1,128	422	110	65	4	601	1,729	-	35,218	-	37,527
7-Jun	0	0	2	1	0	3	10	0	1	0	11	14	0.26	369	110	383
8-Jun	0	0	0	0	0	0	1	0	1	0	2	2	0.037	384	120	386
9-Jun	0	0	2	3	0	5	0	0	1	0	1	6	0.11	212	66	218
10-Jun	0	2	3	0	0	5	1	0	1	0	2	7	0.13	444	140	451
11-Jun	0	0	2	1	0	3	1	1	1	0	3	6	0.11	416	130	422
12-Jun	0	7	3	4	0	14	1	2	1	0	4	18	0.33	445	140	463
13-Jun	0	1	2	1	0	4	1	0	0	0	1	5	0.093	342	110	347
14-Jun	1	3	1	1	0	5	1	3	0	0	4	9	0.17	397	120	407
15-Jun	0	0	1	0	0	1	0	2	0	0	2	3	0.056	211	65	214
16-Jun	0	0	0	0	0	0	0	2	0	0	2	2	0.037	149	46	151
17-Jun	0	1	2	0	0	3	1	1	0	0	2	5	0.093	242	75	247
18-Jun	0	0	3	0	0	3	1	0	0	0	1	4	0.074	253	78	257
19-Jun	0	0	0	0	0	0	0	0	0	1	1	1	0.019	141	44	142
20-Jun	0	0	1	0	0	1	0	1	0	0	1	2	0.037	216	67	218
Total since start of outbreak	581	755	267	149	4	1,175	440	122	71	5	638	1,813	-	39,439	-	41,833
Population at risk ⁴												5,381,000		323,000		5,704,000
Prevalence												0.03%		12.21%		0.73%

¹ Previously we had tracked the work permit holders living outside dormitories as a separate category, and put a large number of these workers on Stay Home Notices (SHN). The SHN for these workers has since expired. Hence we have now updated the definition of "Cases in the Community" to include all cases (including amongst work permit holders) that are detected outside of the dormitories.

² Includes cases pending epi-investigation.

³ Includes Training Work Permit (TWP) holders.

⁴ Population at risk for community cases includes SC/PRs and work pass holders not residing in dormitories. Source: MOM and Singstat.

Figure 1.2: Epidemic Curve of the COVID-19 Outbreak by Press Release Date

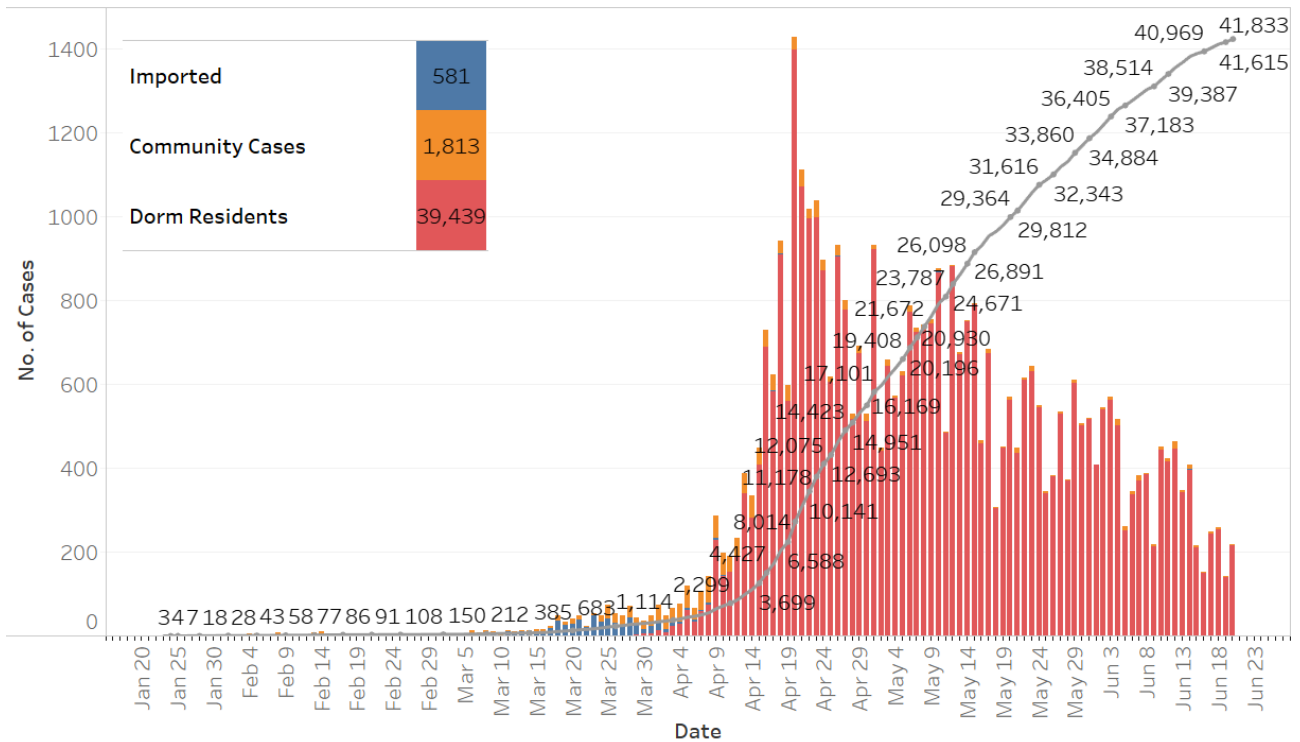
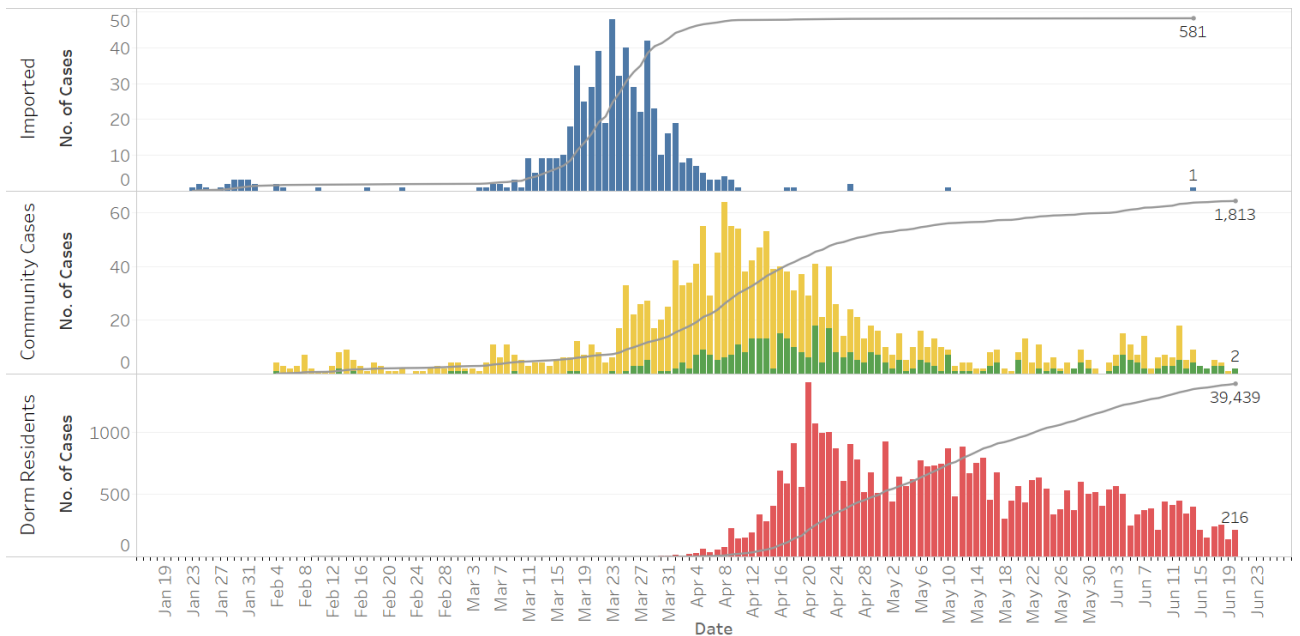


Figure 1.3: Epidemic Curve of the COVID-19 Outbreak by Press Release Date



COVID-19 Cases

- Imported
- Community Cases: SC/PR + G or F (other pass types) + Visitors
- Community Cases: G or F (work permit)
- Dorm Residents

Figure 1.4: Epidemic Curve of Linked and Unlinked Cases among the Community by Press Release Date (left panel) and by Symptom Onset or Notification Date⁵ (right panel)

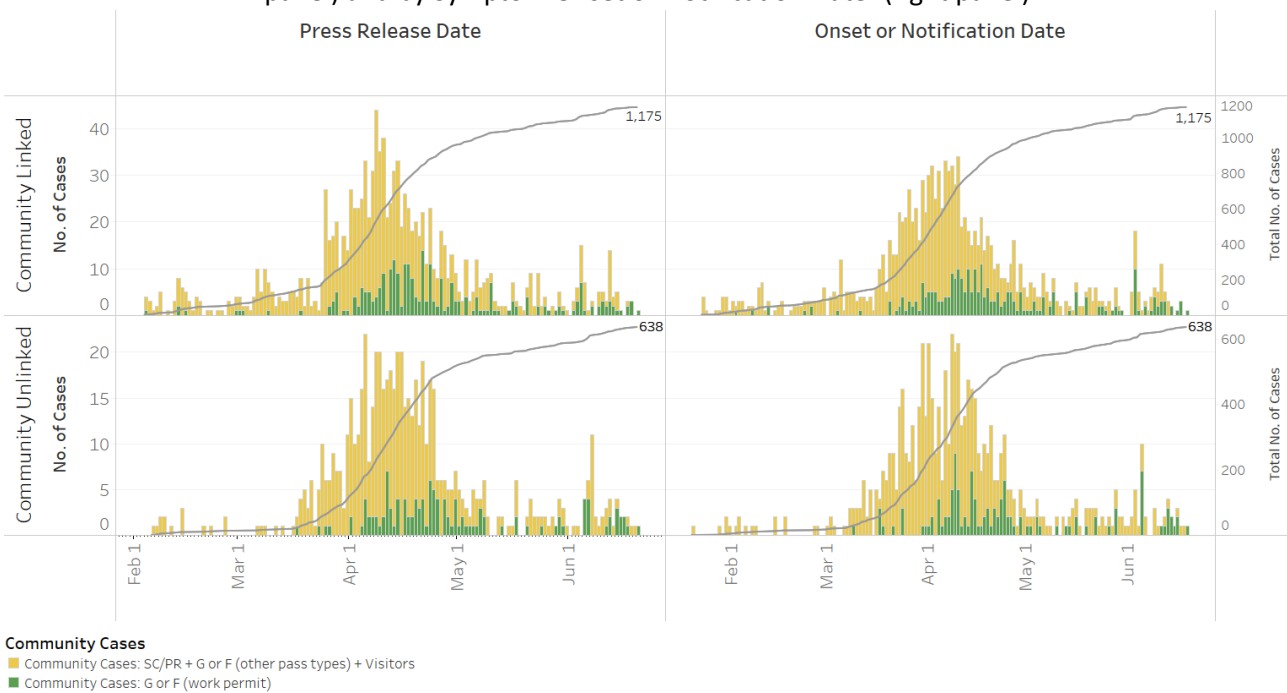
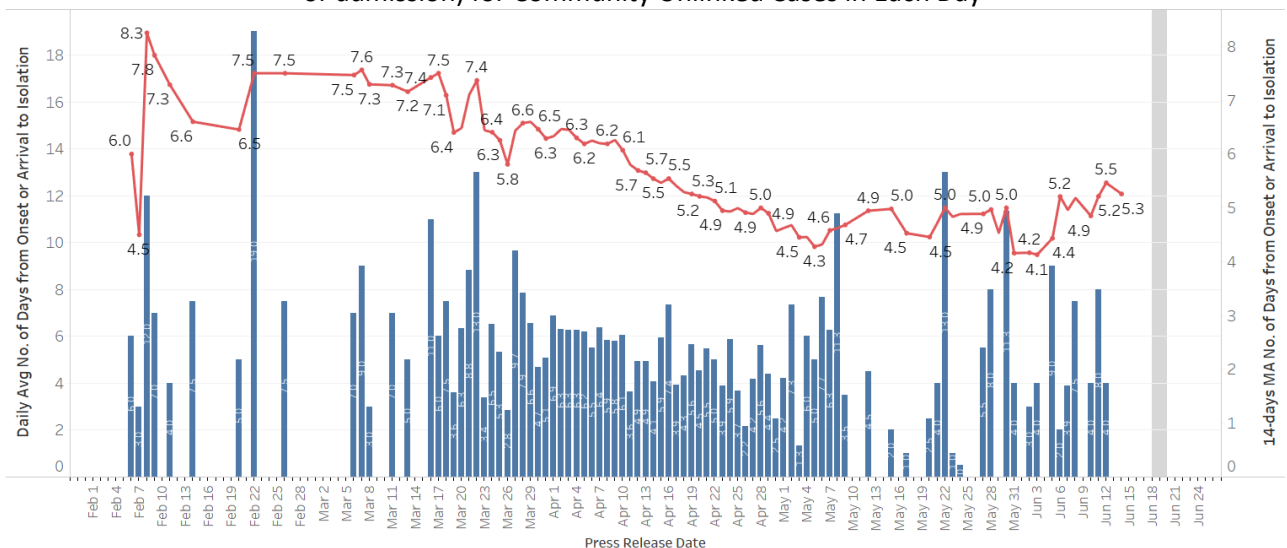


Figure 1.5: Average Number of Days from Onset of Symptoms to Isolation (QO, MOH contact, notification or admission) for Community Unlinked Cases in Each Day⁶



Line represents the 14-day moving average; Bar represents the daily average

⁵ Date of notification was used for cases that did not display any symptoms. The numbers with onset in the past few days may see an increase as more cases are notified.

⁶ Area in grey demarcates the data points for the past 3 days where some cases are still pending investigation. The bar chart shows the daily average number of days from onset date to isolation, while the line chart shows the moving average for the past 14 days. Both charts exclude cases with missing onset dates in the computation of the average.

(2) Number of COVID-19 Cases in Hospitals and Community Care Facilities**Figure 2.1:** Summary of Confirmed Cases by Status in the Past 14 Days

Press Release Date	Currently Admitted in Hospitals		In Care Facilities ⁷	Total Recovered		Total Demised	Total
	ICU	General Wards		Completed Isolation	Discharged from Hospital		
7-Jun	3	292	12,704	23,361	1,525	25	37,910
8-Jun	4	265	12,634	23,823	1,545	25	38,296
9-Jun	3	245	12,364	24,316	1,561	25	38,514
10-Jun	3	220	12,185	24,948	1,584	25	38,965
11-Jun	2	225	11,849	25,689	1,597	25	39,387
12-Jun	2	237	11,546	26,434	1,606	25	39,850
13-Jun	1	227	11,135	27,191	1,617	26	40,197
14-Jun	2	236	10,751	27,961	1,628	26	40,604
15-Jun	2	241	10,183	28,731	1,635	26	40,818
16-Jun	2	267	9,511	29,516	1,647	26	40,969
17-Jun	2	255	8,995	30,277	1,661	26	41,216
18-Jun	2	223	8,510	31,046	1,666	26	41,473
19-Jun	2	210	7,918	31,781	1,678	26	41,615
20-Jun	1	184	7,398	32,540	1,684	26	41,833

⁷ Community Care Facilities (i.e. D'Resort, EXPO, Changi Exhibition Centre, Tuas South), Private Hospitals (i.e. Concord International Hospital, Mt Elizabeth Hospital, Gleneagles Hospital, Mt Elizabeth Novena Hospital, Parkway East Hospital), Community Hospitals (i.e. Bright Vision Hospital, St. Andrew's Community Hospital, Yishun Community Hospital, Jurong Community Hospital, Sengkang Community Hospital) and other care facilities.

(3) Number of Stay-Home-Notice (SHN) Issued

Figure 3.1: Daily Number of SHN issued

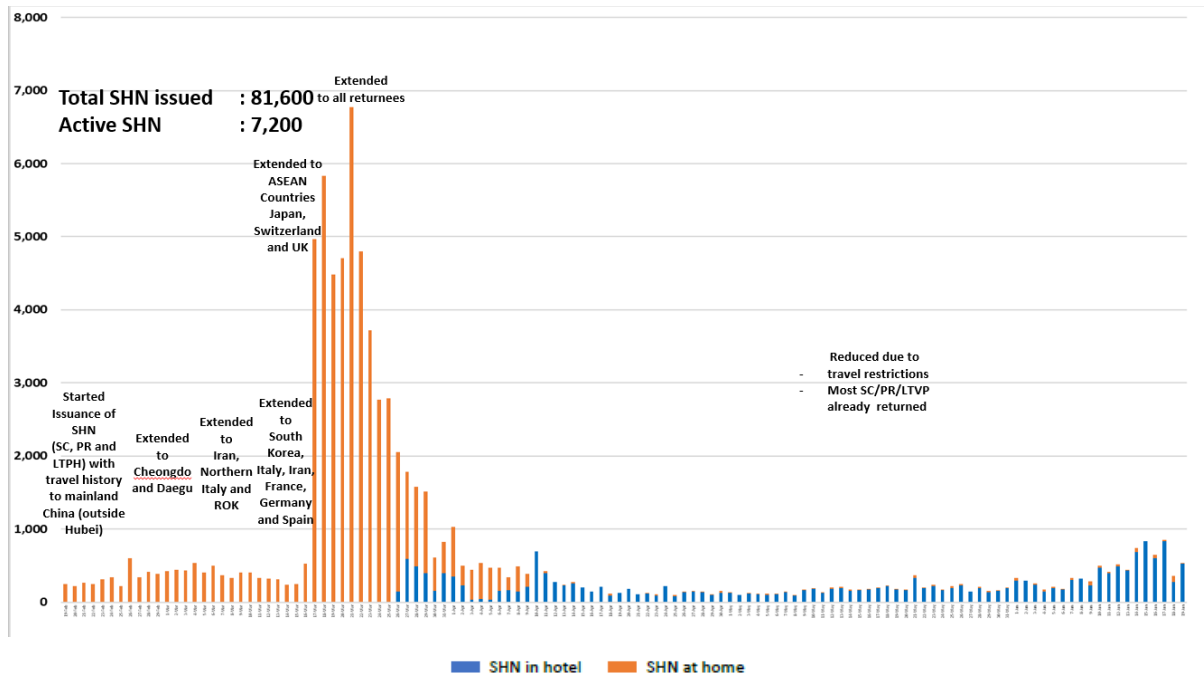
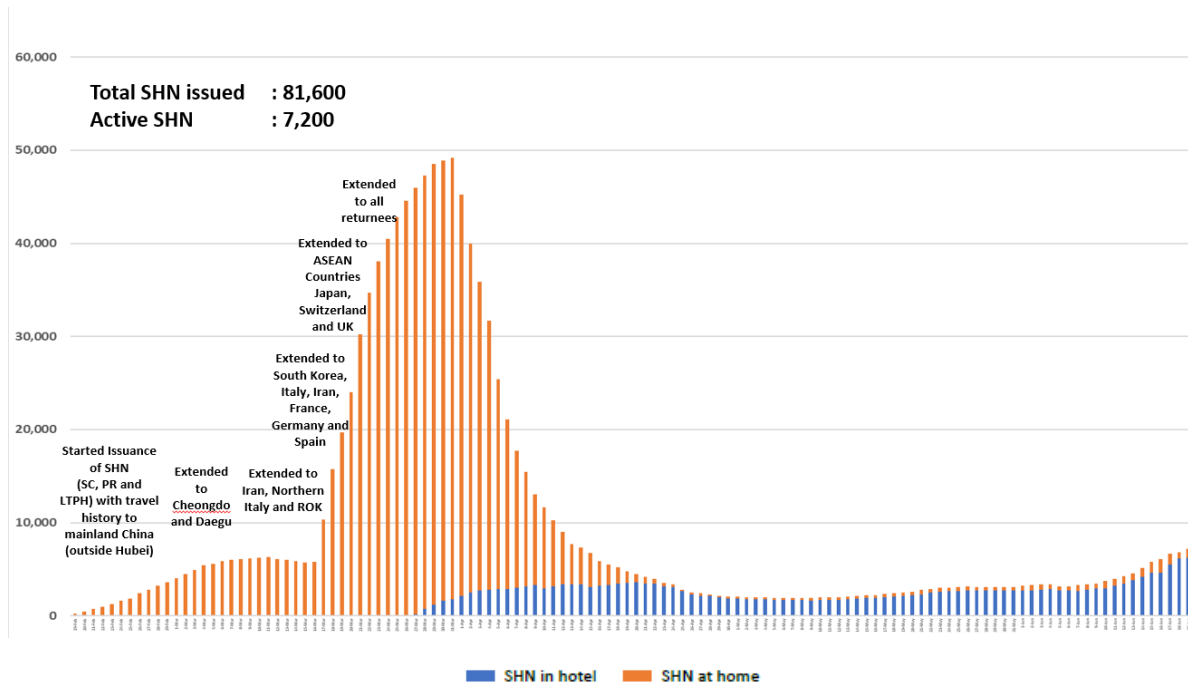


Figure 3.2: Active Stock Number of SHN (Home) and SHN (Hotel)



(4) Number of Quarantine Order (QO) Issued

Figure 4.1: Daily Number of QOs Issued

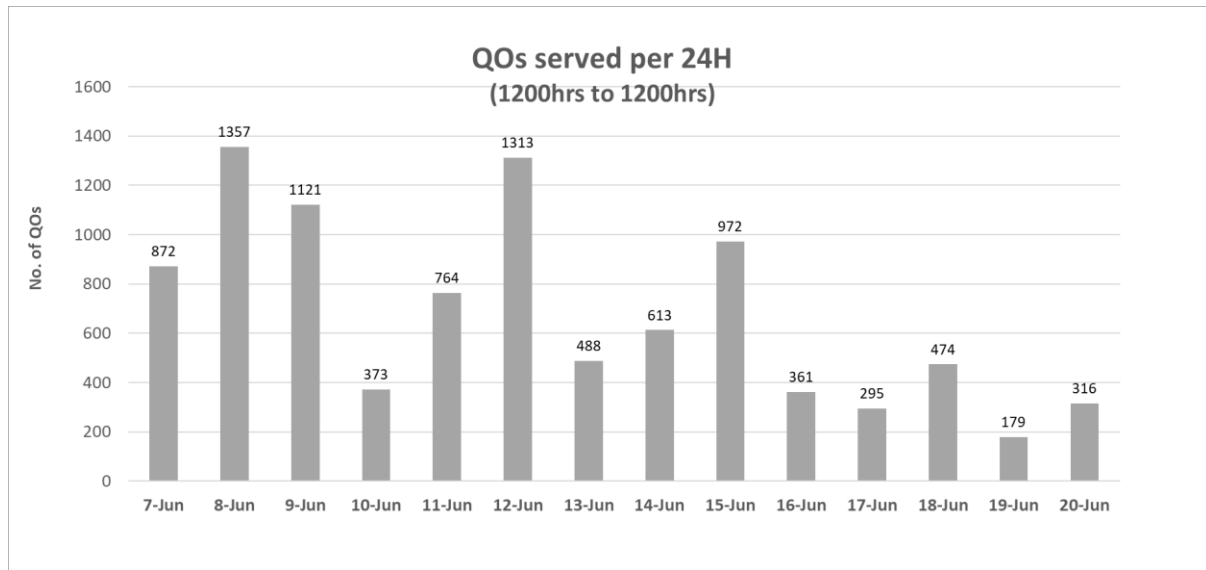
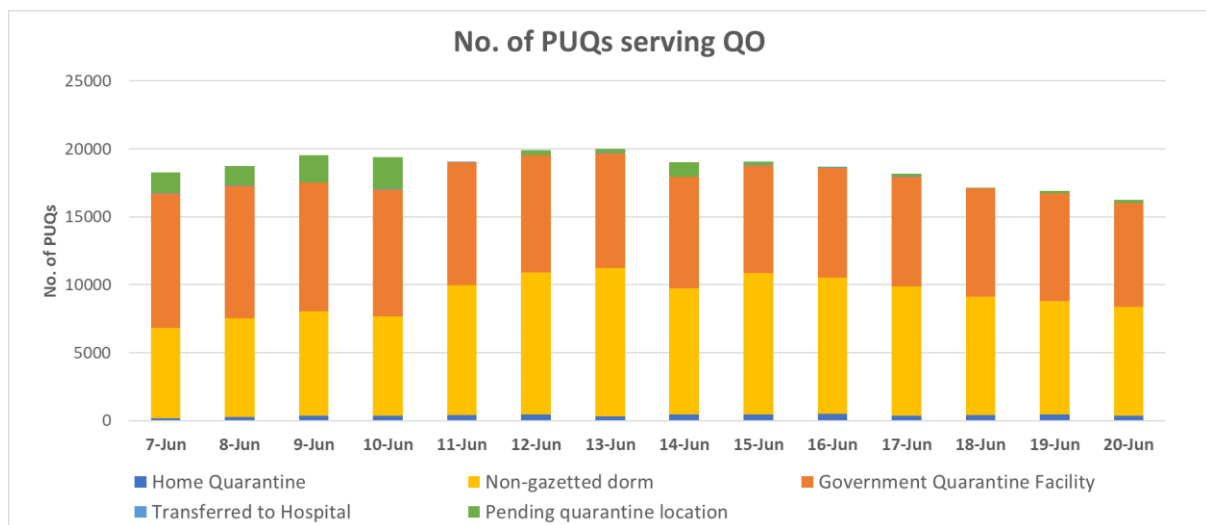


Figure 4.2: Active Number of Persons Under Quarantine (PUQs)⁸



⁸ The number of PUQs at GQFs has been revised to align with Foreign Manpower Sub-Group & Tourists and Locals Sub-Group GQF Occupancy Status figures reported by MND.