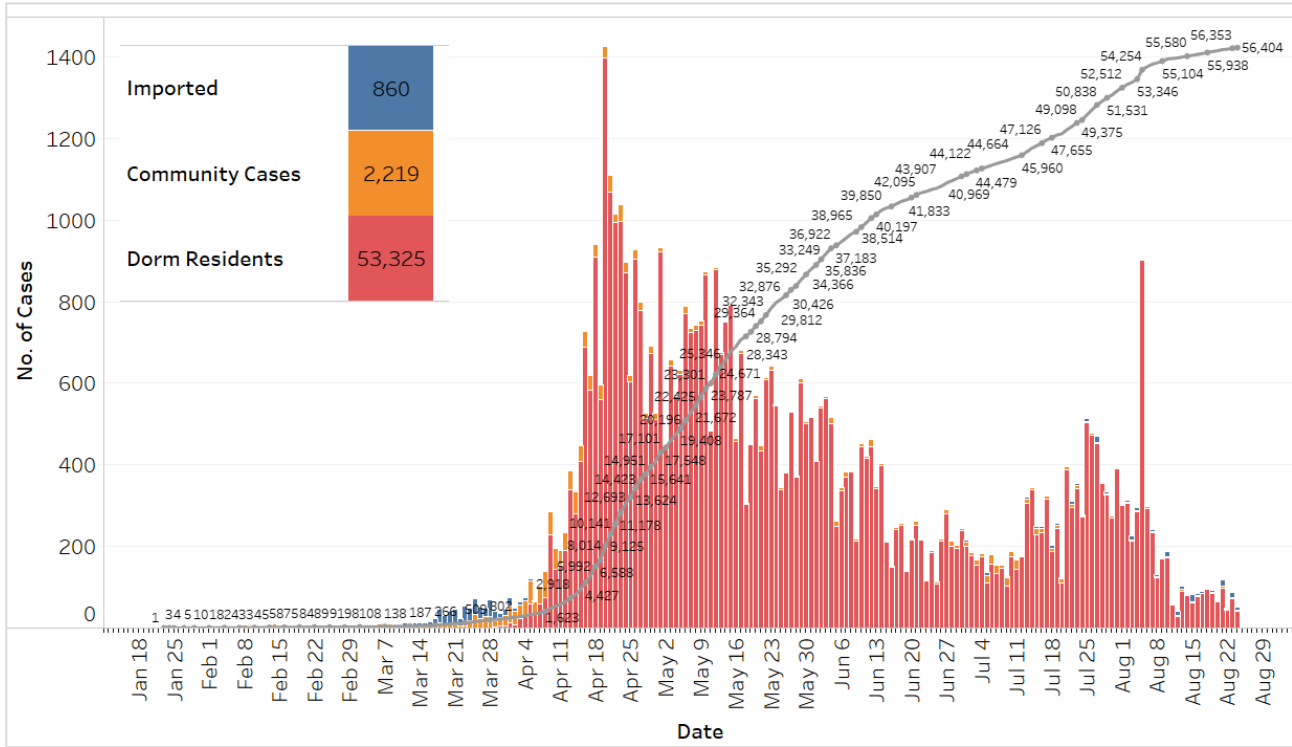


**24 August 2020 Daily Report on COVID-19****(1) Number of COVID-19 Cases****Figure 1.1:** Breakdown of New Confirmed Cases in the Past 14 Days

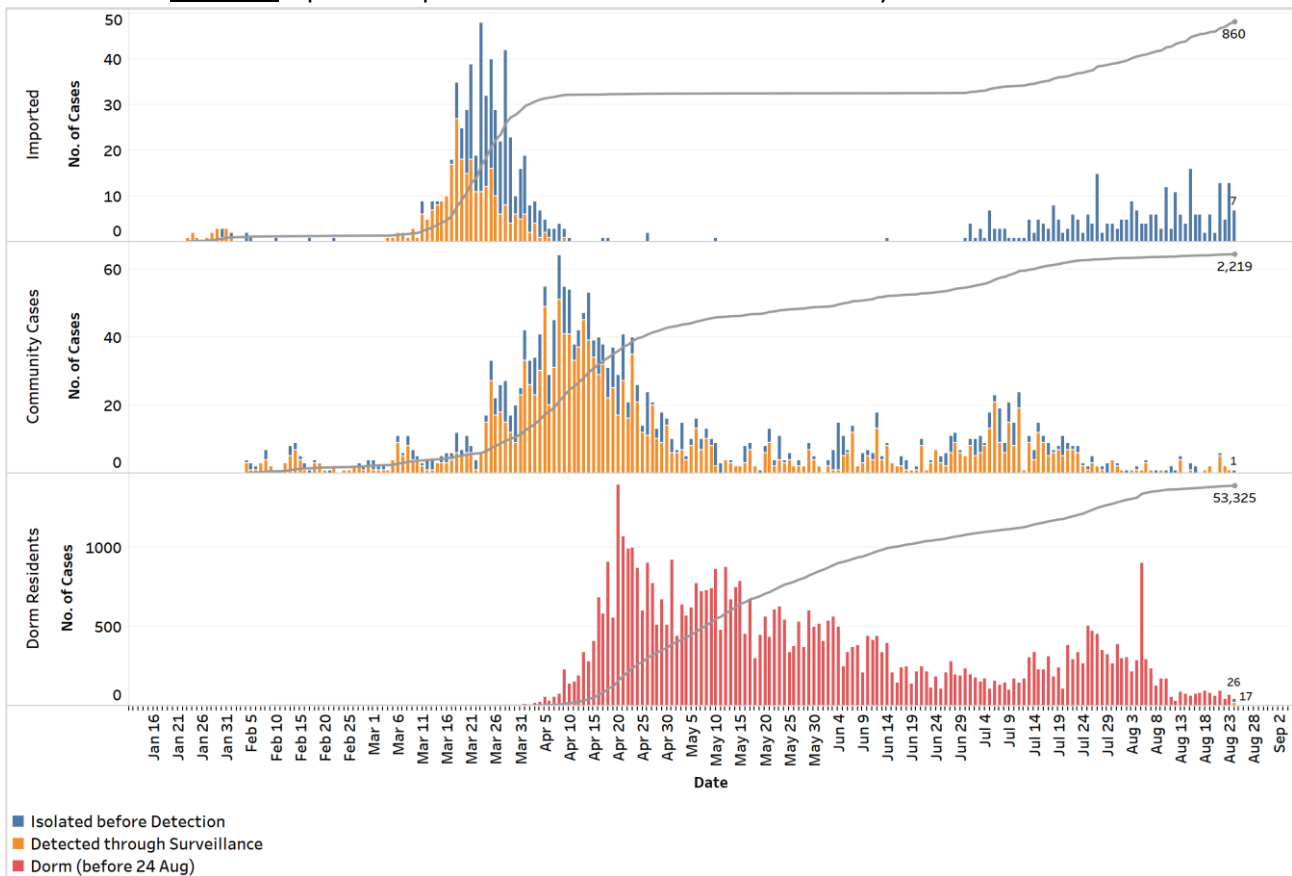
Press Release Date	Imported			Non-Imported Cases													All Cases	
				Community Cases								Dorm Residents <sup>1,2</sup>						
	Isolated	Not on SHN <sup>3</sup>	Sub-Total	Isolated before Detection				Detected through Surveillance				Sub-Total	Incidence Rate <sup>4</sup> (per 100,000)	Isolated before Detection	Detected through Surveillance	No. of Cases		Incidence Rate <sup>4</sup> (per 100,000)
				SC/PR	G or F	Visitor	Sub-Total	SC/PR	G or F	Visitor	Sub-Total							
Before 11-Aug	488	272	760	344	253	1	598	988	598	9	1,595	2,193	-	52,339		52,339	-	55,292
11-Aug	3	0	3	2	0	0	2	0	0	0	0	2	0.037	56		56	17	61
12-Aug	11	0	11	1	0	0	1	0	0	0	0	1	0.019	30		30	9.3	42
13-Aug	6	0	6	1	0	0	1	0	4	0	4	5	0.093	91		91	28	102
14-Aug	4	0	4	0	0	0	0	0	0	0	0	0	0	79		79	24	83
15-Aug	16	0	16	1	1	0	2	1	0	0	1	3	0.056	62		62	19	81
16-Aug	6	0	6	1	1	0	2	0	0	0	0	2	0.037	78		78	24	86
17-Aug	6	0	6	0	0	0	0	0	0	0	0	0	0	85		85	26	91
18-Aug	2	0	2	0	0	0	0	1	0	0	1	1	0.019	97		97	30	100
19-Aug	6	0	6	0	0	0	0	0	2	0	2	2	0.037	85		85	26	93
20-Aug	2	0	2	0	0	0	0	0	0	0	0	0	0	66		66	20	68
21-Aug	13	0	13	1	0	0	1	2	3	0	5	6	0.11	98		98	30	117
22-Aug	5	0	5	0	0	0	0	2	0	0	2	2	0.037	43		43	13	50
23-Aug	13	0	13	0	0	0	0	0	1	0	1	1	0.019	73		73	23	87
24-Aug	7	0	7	1	0	0	1	0	0	0	0	1	0.019	26	17	43	13	51
Total since start of outbreak	588	272	860	352	255	1	608	994	608	9	1,611	2,219	-	53,299		53,325	-	56,404
Population at risk												5,381,000				323,000		5,704,000
Prevalence												0.04%				16.51%		0.99%

<sup>1</sup> Includes PRs and visitors residing in dorms.<sup>2</sup> Breakdown of dorm cases into those detected through surveillance and those isolated before detection is not available before 24 Aug.<sup>3</sup> All of these cases were reported before early Apr 2020, and constitute the first wave of imported cases.<sup>4</sup> Incidence rates are rounded to two significant figures.

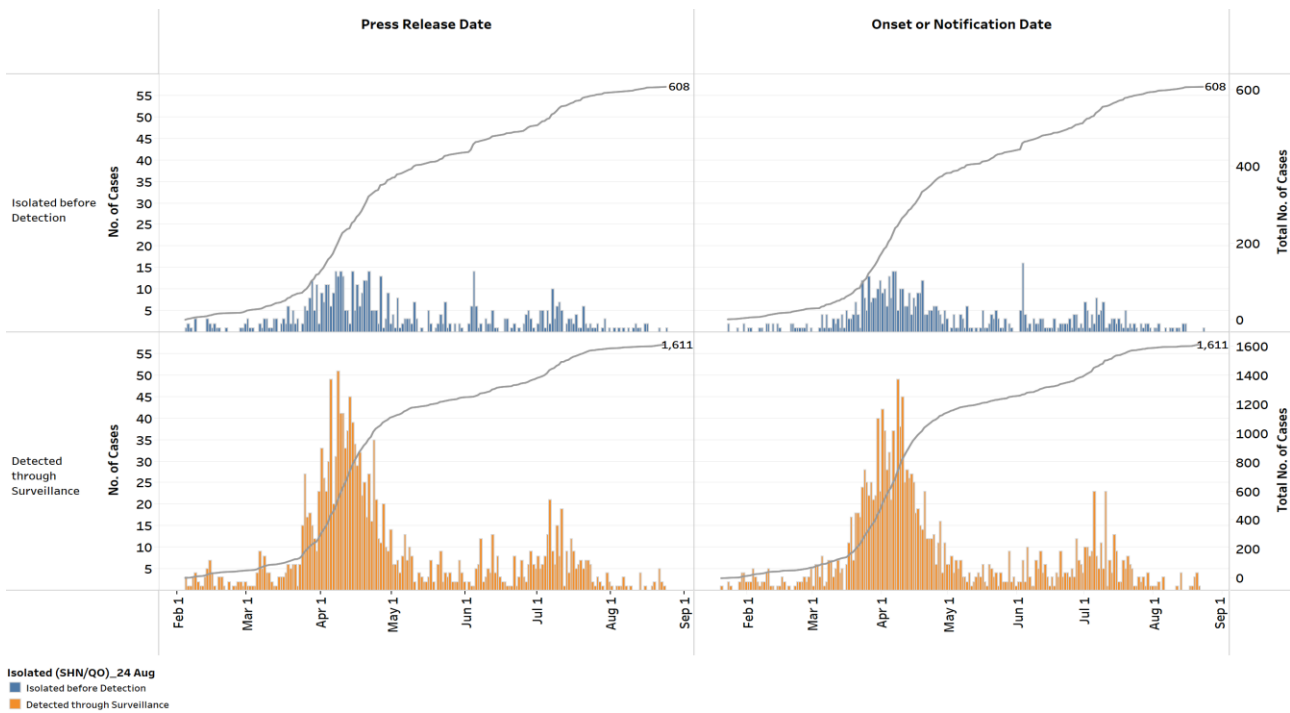
**Figure 1.2:** Epidemic Curve of the COVID-19 Outbreak by Press Release Date



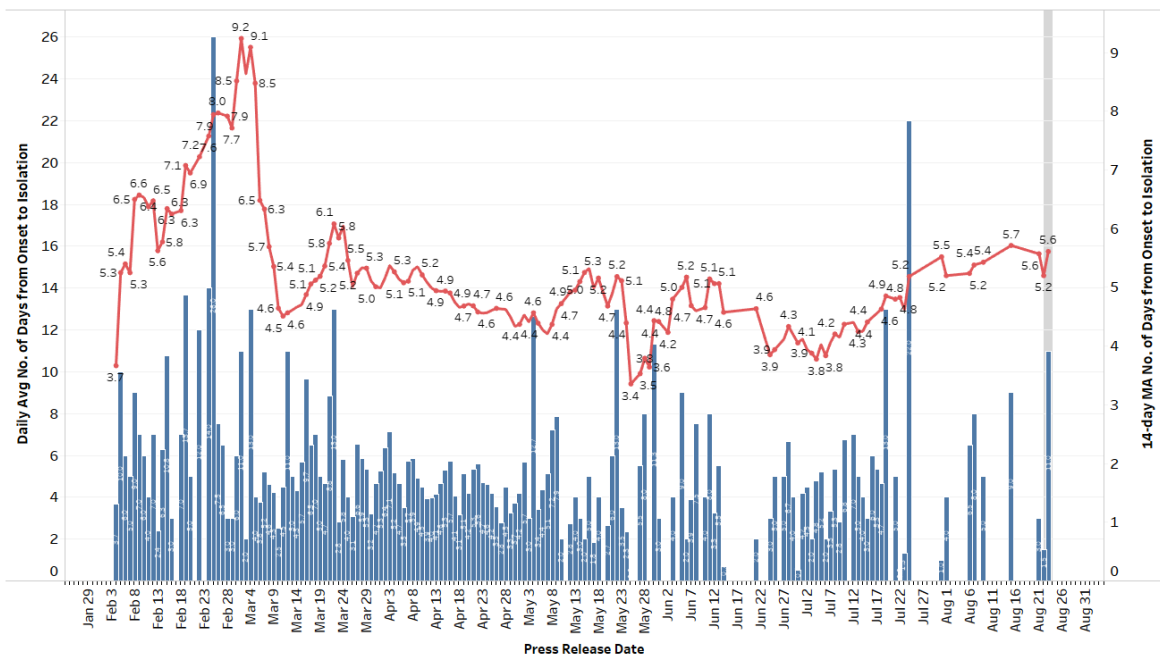
**Figure 1.3:** Epidemic Split Curve of the COVID-19 Outbreak by Press Release Date



**Figure 1.4:** Epidemic Curve of Community Cases by Press Release Date (left panel) and by Symptom Onset or Notification Date<sup>5</sup> (right panel)



**Figure 1.5:** Average Number of Days from Onset of Symptoms to Isolation (QO, hospital admission or notification to MOH) for Community Cases Detected through Surveillance in Each Day<sup>6</sup>



*Line represents the 14-day moving average; Bar represents the daily average<sup>7</sup>*

<sup>5</sup> Date of notification was used for cases that did not display any symptoms. The numbers with onset in the past few days may see an increase as more cases are notified.

<sup>6</sup> Area in grey demarcates the data points for the past 3 days where some cases are still pending investigation. The bar chart shows the daily average number of days from onset date to isolation, while the line chart shows the moving average for the past 14 days. Both charts exclude cases with missing onset dates in the computation of the average.

<sup>7</sup> Asymptomatic community unlinked cases are not reflected in this chart. Community unlinked cases with symptoms who are isolated on the same day that symptoms occurred would have an isolation time of 0.

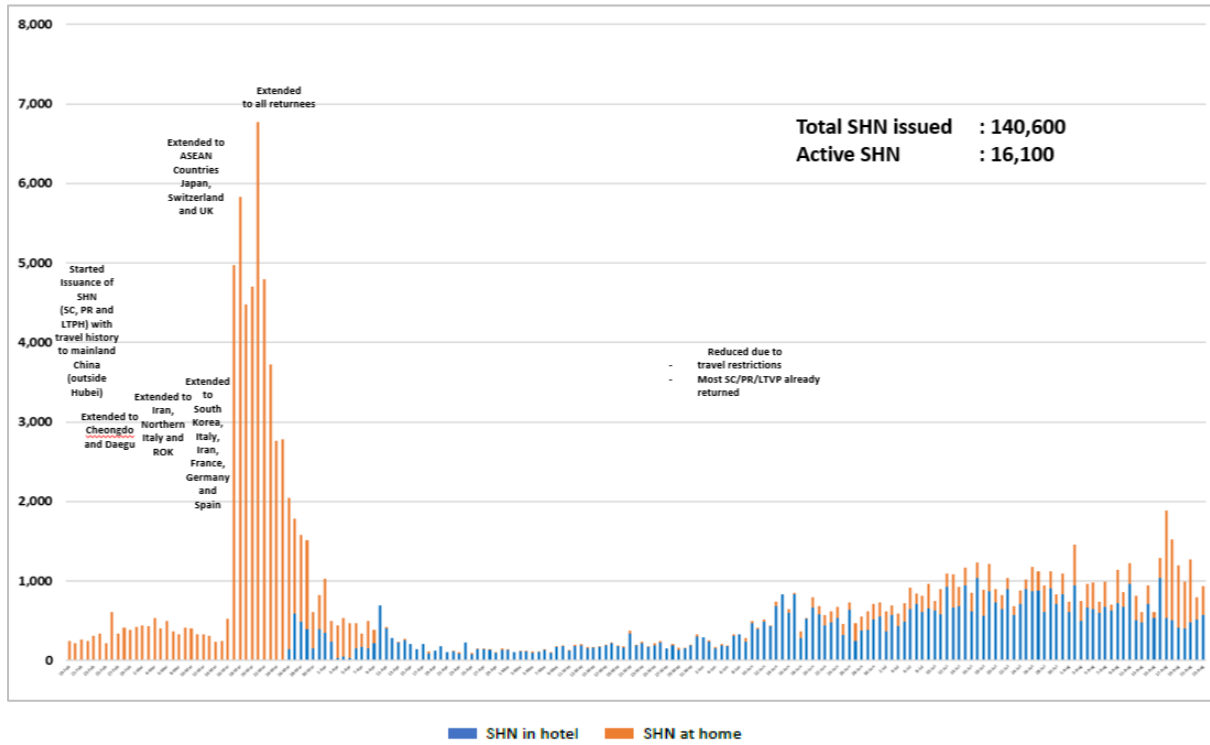
**(2) Number of COVID-19 Cases in Hospitals and Community Care Facilities****Figure 2.1:** Summary of Confirmed Cases by Status in the Past 14 Days

Press Release Date	Currently Admitted in Hospitals		In Care Facilities <sup>8</sup>	Total Recovered		Total Demised	Total
	ICU	General Wards		Completed Isolation	Discharged from Hospital		
11-Aug	0	104	5,094	47,960	2,168	27	<b>55,353</b>
12-Aug	0	92	4,756	48,341	2,179	27	<b>55,395</b>
13-Aug	0	91	4,643	48,552	2,184	27	<b>55,497</b>
14-Aug	0	79	4,425	48,856	2,193	27	<b>55,580</b>
15-Aug	0	83	4,030	49,326	2,195	27	<b>55,661</b>
16-Aug	0	82	3,685	49,746	2,207	27	<b>55,747</b>
17-Aug	0	82	3,379	50,142	2,208	27	<b>55,838</b>
18-Aug	0	88	3,290	50,323	2,210	27	<b>55,938</b>
19-Aug	0	87	3,107	50,597	2,213	27	<b>56,031</b>
20-Aug	0	75	2,878	50,901	2,218	27	<b>56,099</b>
21-Aug	0	72	2,466	51,427	2,224	27	<b>56,216</b>
22-Aug	0	81	2,238	51,691	2,229	27	<b>56,266</b>
23-Aug	0	76	2,086	51,929	2,235	27	<b>56,353</b>
24-Aug	0	84	1,706	52,347	2,240	27	<b>56,404</b>

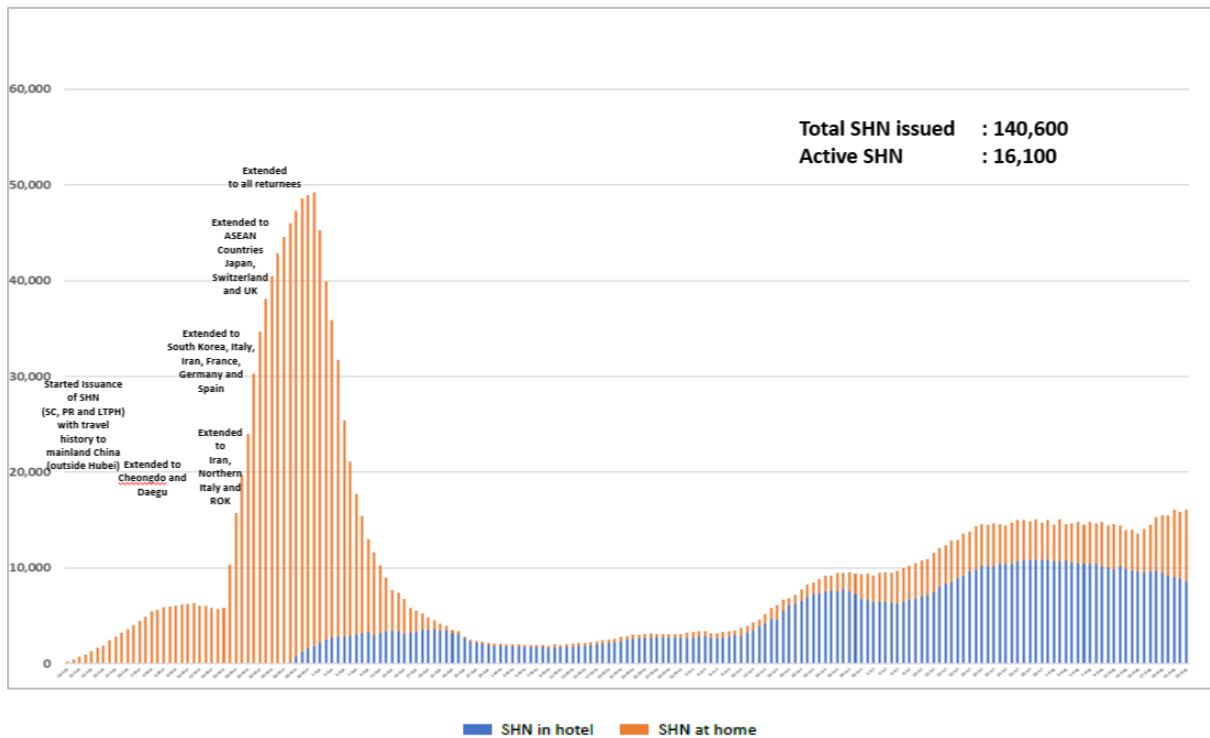
<sup>8</sup> Community Care Facilities (i.e. D'Resort, EXPO, Changi Exhibition Centre, Big Box), Private Hospitals (i.e. Concord International Hospital, Mt Elizabeth Hospital, Gleneagles Hospital, Mt Elizabeth Novena Hospital, Parkway East Hospital), Community Hospitals (i.e. Bright Vision Hospital, St. Andrew's Community Hospital, Jurong Community Hospital) and other care facilities.

### (3) Number of Stay-Home-Notice (SHN) Issued

**Figure 3.1:** Daily Number of SHN issued

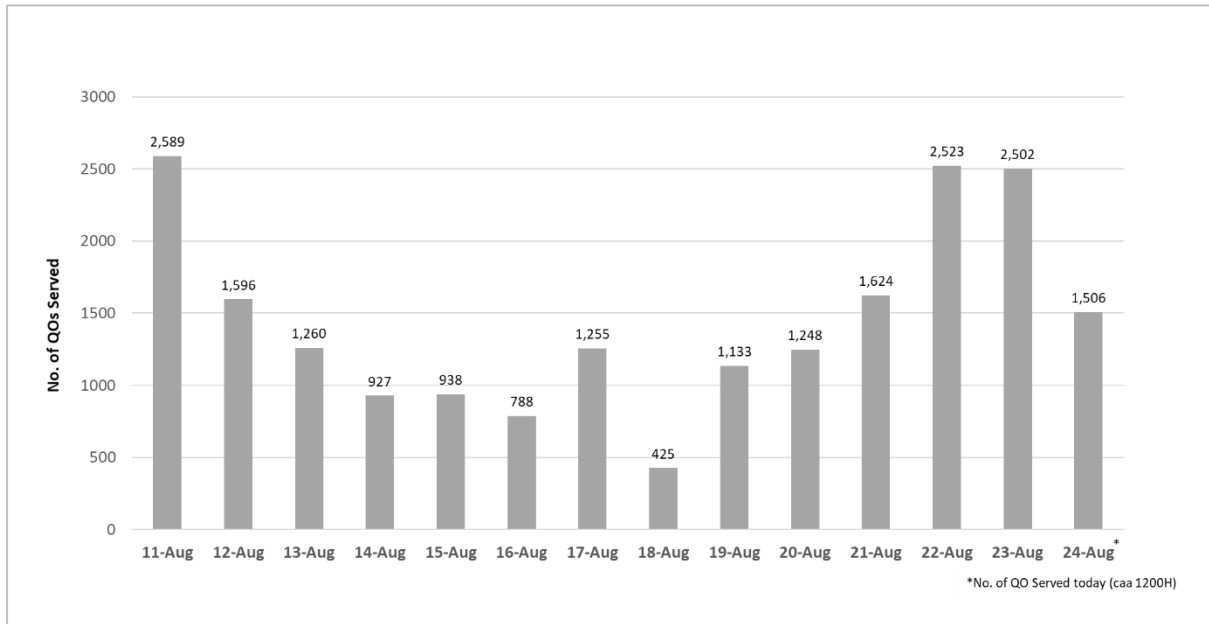


**Figure 3.2:** Active Stock Number of SHN (Home) and SHN (Hotel)



**(4) Number of Quarantine Order (QO) Issued**

**Figure 4.1:** Daily Number of QOs Issued



**Figure 4.2:** Active Number of Persons Under Quarantine (PUQs)

