

27 May 2020 Daily Report on COVID-19**(1) Number of COVID-19 Cases****Figure 1.1:** Number of Cases Reported over the Past 14 Days

Press Release Date	Imported	Non-Imported Cases														All Cases
		Community Cases ¹												Dorm Residents		
		Linked Cases					Unlinked Cases ²					Sub-Total	Incidence Rate (per 100,000)	No. of Cases	Incidence Rate (per 100,000)	
		SC/PR	G or F (work permit)	G or F (other pass types)	Visitor	Sub-Total	SC/PR	G or F (work permit)	G or F (other pass types)	Visitor	Sub-Total					
Before 14-May	580	681	206	121	4	1,012	412	105	64	4	585	1,597	-	23,169	-	25,346
14-May	0	2	0	0	0	2	0	0	0	0	0	2	0.037	750	230	752
15-May	0	0	1	0	0	1	1	0	0	0	1	2	0.037	791	240	793
16-May	0	4	3	0	0	7	0	0	1	0	1	8	0.15	457	140	465
17-May	0	1	2	0	0	3	3	2	1	0	6	9	0.17	673	210	682
18-May	0	2	0	0	0	2	0	0	0	0	0	2	0.037	303	94	305
19-May	0	1	0	0	0	1	0	0	0	0	0	1	0.019	450	140	451
20-May	0	2	4	0	0	6	0	1	1	0	2	8	0.15	562	170	570
21-May	0	9	0	0	0	9	4	0	0	0	4	13	0.24	435	130	448
22-May	0	2	0	0	0	2	2	0	0	0	2	4	0.074	610	190	614
23-May	0	4	2	2	0	8	2	0	1	0	3	11	0.20	631	200	642
24-May	0	2	0	0	0	2	1	1	0	0	2	4	0.074	544	170	548
25-May	0	2	2	0	0	4	2	0	0	0	2	6	0.11	338	100	344
26-May	0	0	1	0	0	1	1	0	0	0	1	2	0.037	381	120	383
27-May	0	2	0	0	0	2	1	0	1	0	2	4	0.074	529	160	533
Total since start of outbreak	580	714	221	123	4	1,062	429	109	69	4	611	1,673	-	30,623	-	32,876
Population at risk ³												5,381,000		323,000		5,704,000
Prevalence												0.03%		9.48%		0.58%

¹ Previously we had tracked the work permit holders living outside dormitories as a separate category, and put a large number of these workers on Stay Home Notices (SHN). The SHN for these workers has since expired. Hence we have now updated the definition of "Cases in the Community" to include all cases (including amongst work permit holders) that are detected outside of the dormitories.

² Includes cases pending epi-investigation.

³ Population at risk for community cases includes SC/PRs and work pass holders not residing in dormitories. Source: MOM and Singstat.

Figure 1.2: Epidemic Curve of the COVID-19 Outbreak by Press Release Date

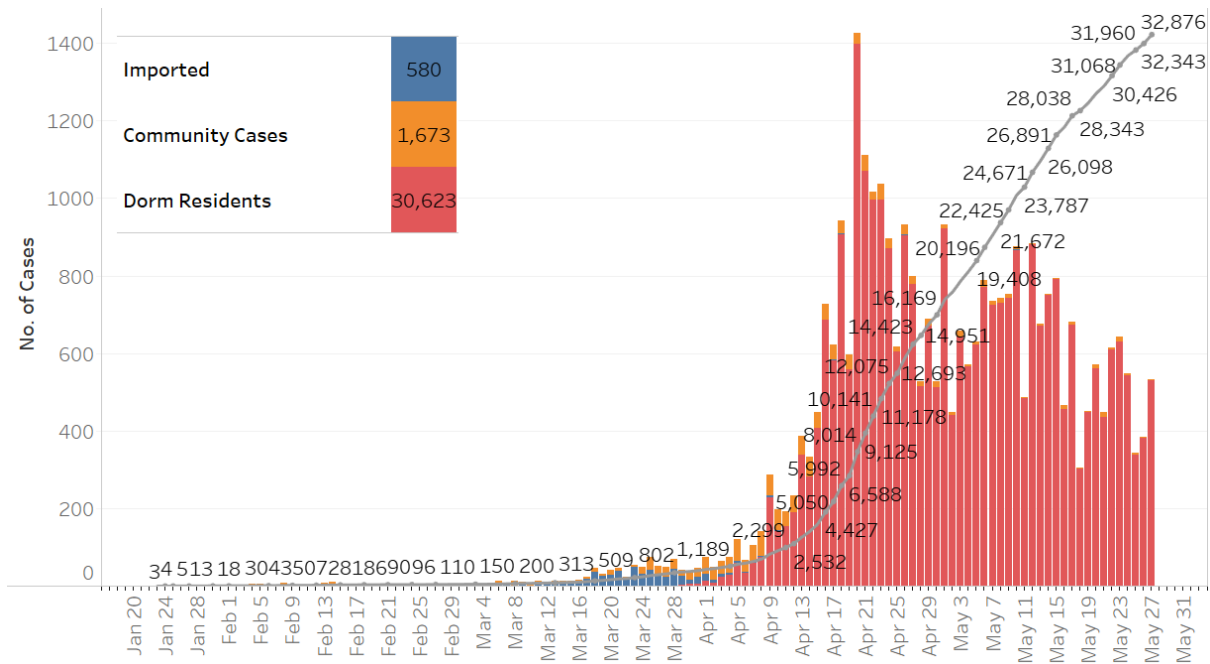


Figure 1.3: Epidemic Curve of the COVID-19 Outbreak by Press Release Date

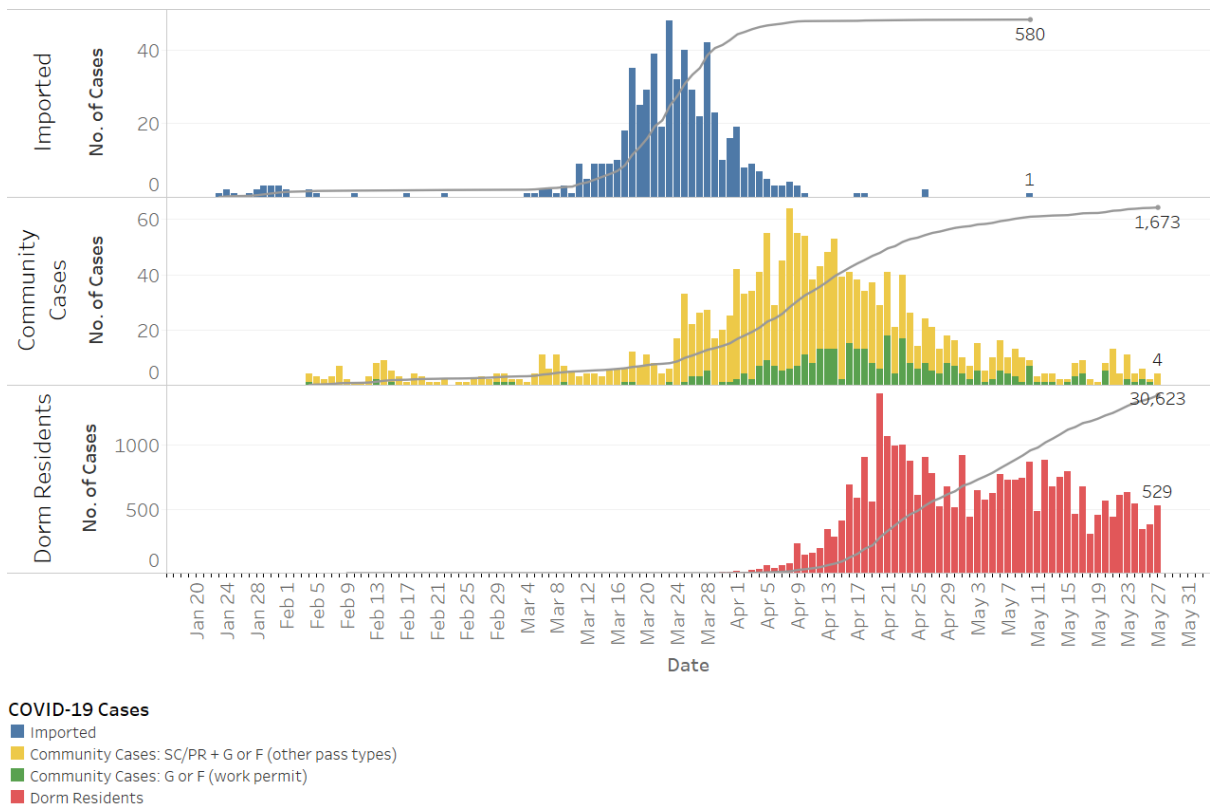


Figure 1.4: Epidemic Curve of Linked and Unlinked Cases among the Community by Press Release Date (left panel) and by Symptom Onset or Notification Date⁴ (right panel)

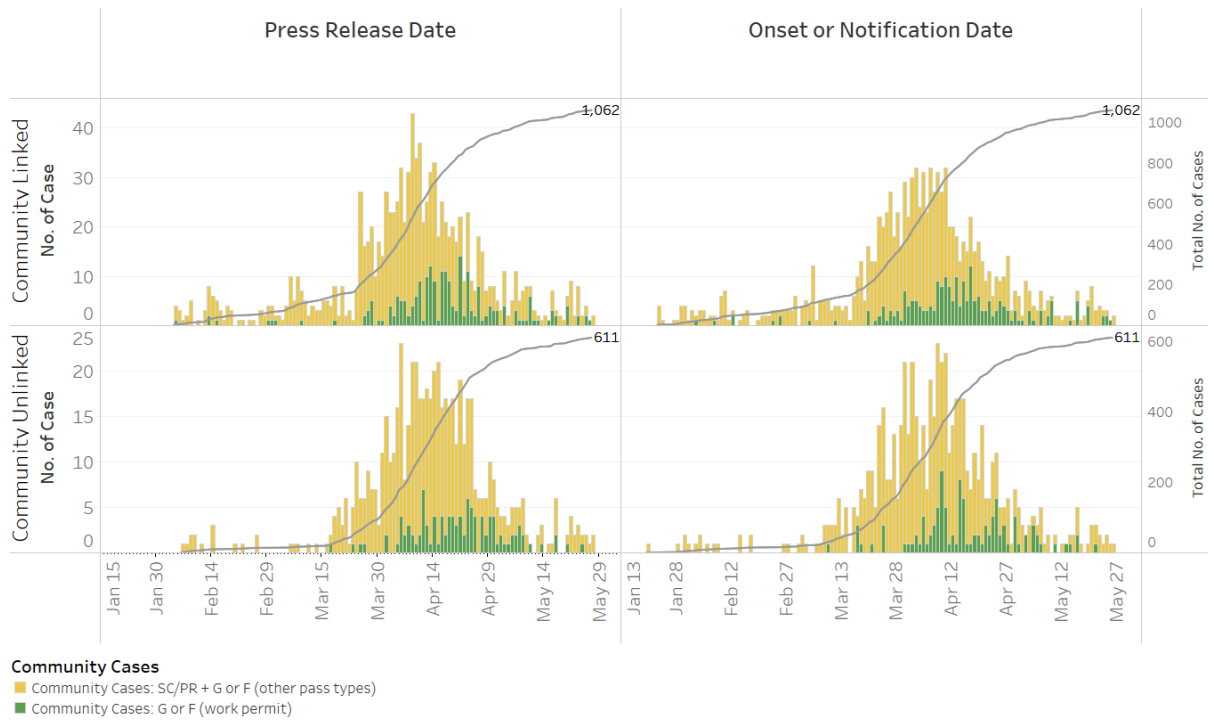
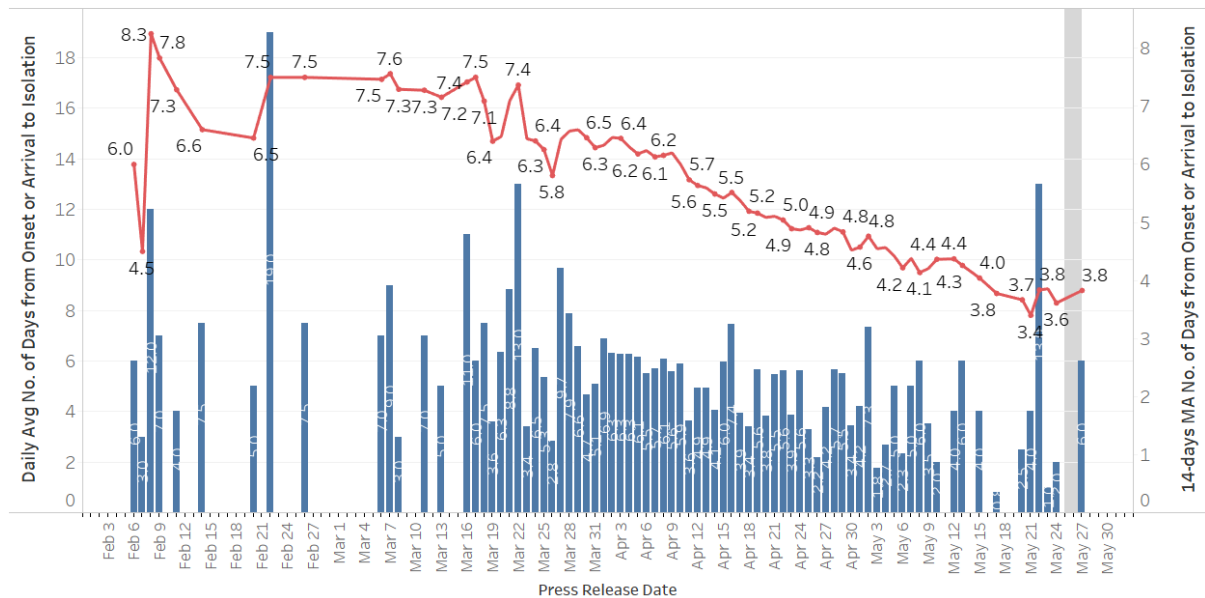


Figure 1.5: Average Number of Days from Onset of Symptoms to Isolation (QO, MOH contact, notification or admission) for Community Unlinked Cases in Each Day⁵



Line represents the 14-day moving average; Bar represents the daily average⁶

⁴ Date of notification was used for cases that did not display any symptoms. The numbers with onset in the past few days may see an increase as more cases are notified.

⁵ Area in grey demarcates the data points for the past 3 days where some cases are still pending investigation. The bar chart shows the daily average number of days from onset date to isolation, while the line chart shows the moving average for the past 14 days. Both charts exclude cases with missing onset dates in the computation of the average.

⁶ The daily average of 13.0 on 22 May is attributed to a single case who had onset of symptoms on 8 May and was isolated on 21 May.

(2) Number of COVID-19 Cases in Hospitals and Community Care Facilities**Figure 2.1:** Summary of Confirmed Cases by Status in the Past 14 Days

Press Release Date	Currently Admitted in Hospitals		In Care Facilities ⁷	Total Recovered		Total Demised	Total
	ICU	General Wards		Completed Isolation	Discharged from Hospital		
14-May	20	1,052	19,032	4,978	995	21	26,098
15-May	18	1,106	18,498	6,229	1,019	21	26,891
16-May	16	1,095	17,881	7,309	1,033	22	27,356
17-May	16	1,194	17,466	8,286	1,054	22	28,038
18-May	12	1,024	17,450	8,776	1,059	22	28,343
19-May	10	994	17,403	9,284	1,081	22	28,794
20-May	11	943	17,181	10,110	1,097	22	29,364
21-May	10	891	16,771	11,017	1,100	23	29,812
22-May	8	790	16,650	11,833	1,122	23	30,426
23-May	8	703	16,452	12,731	1,151	23	31,068
24-May	8	682	16,027	13,686	1,190	23	31,616
25-May	8	599	15,592	14,521	1,217	23	31,960
26-May	8	577	15,291	15,203	1,241	23	32,343
27-May	7	518	15,052	16,007	1,269	23	32,876

⁷ Community Care Facilities (i.e. D'Resort, EXPO, Changi Exhibition Centre, Tuas South), Private Hospitals (i.e. Concord International Hospital, Mt Elizabeth Hospital, Gleneagles Hospital, Mt Alvernia Hospital, Mt Elizabeth Novena Hospital, Parkway East Hospital, Farrer Park Hospital), Community Hospitals (i.e. Bright Vision Hospital, St. Andrew's Community Hospital, Yishun Community Hospital, Jurong Community Hospital, Sengkang Community Hospital) and other care facilities.

(3) Number of Stay-Home-Notice (SHN) Issued

Figure 3.1: Daily Number of SHN issued

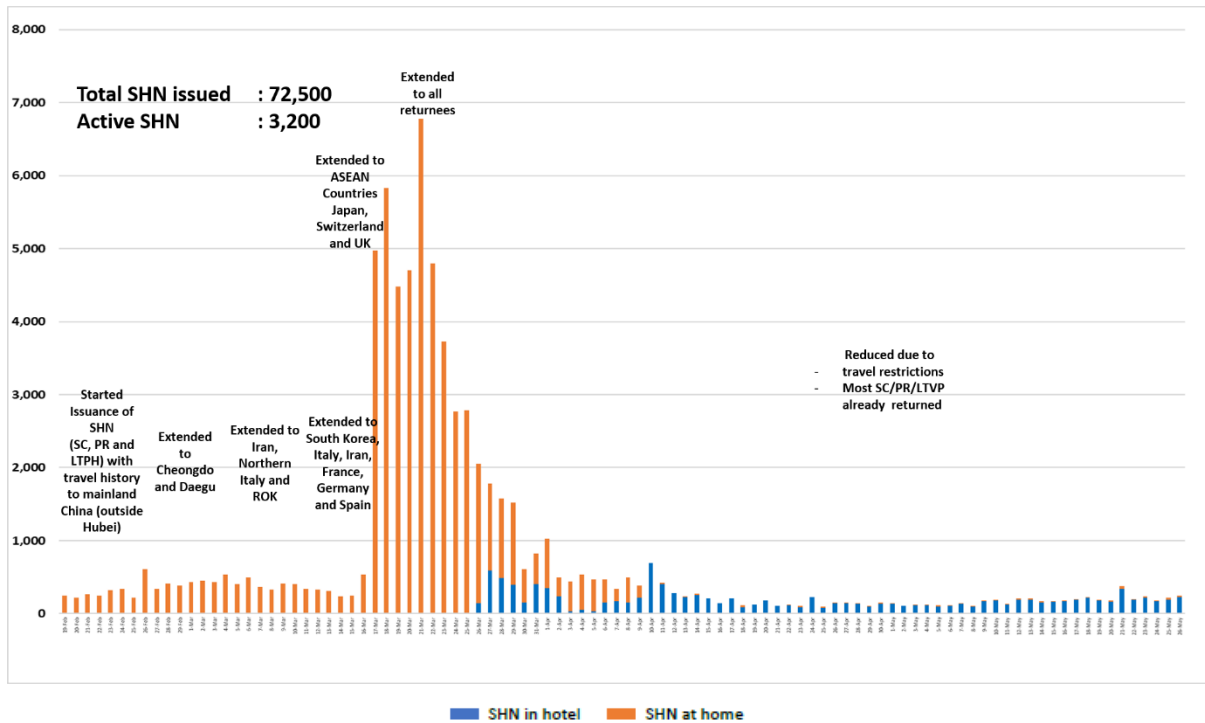
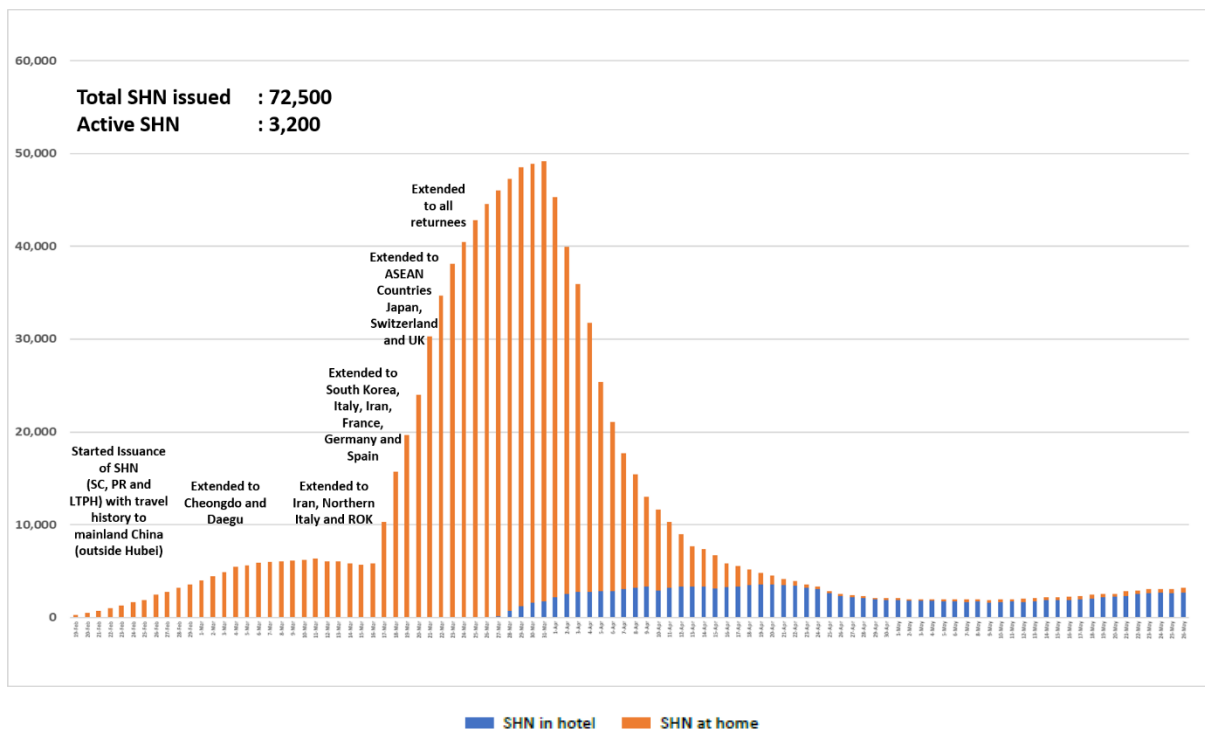


Figure 3.2: Active Stock Number of SHN (Home) and SHN (Hotel)



(4) Number of Quarantine Order (QO) Issued

Figure 4.1: Daily Number of QOs Issued

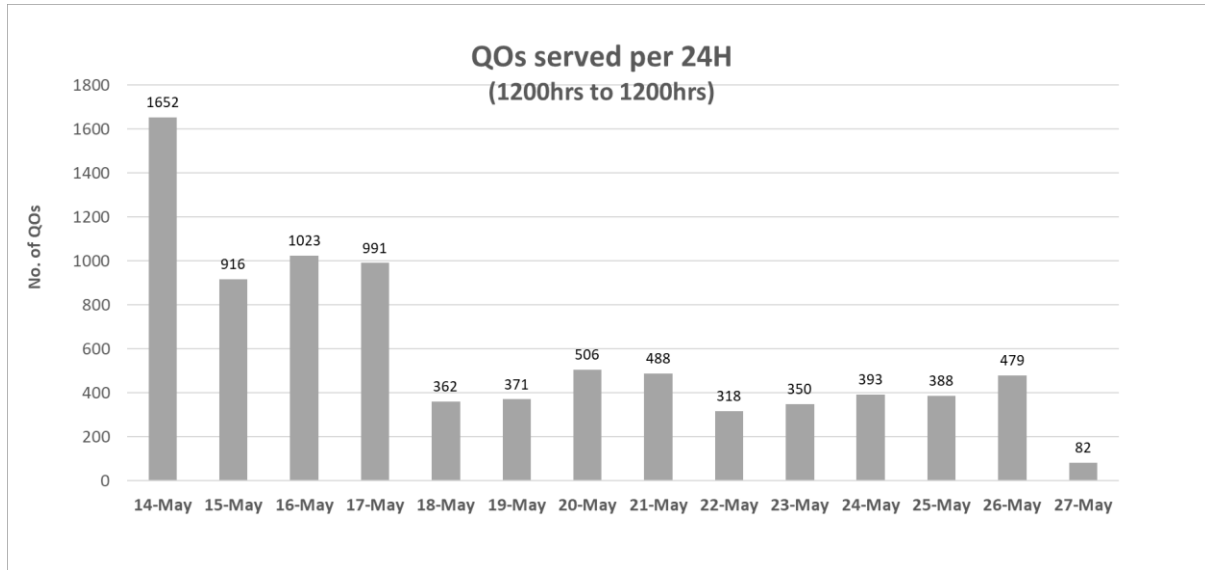


Figure 4.2: Active Number of Persons Under Quarantine (PUQs)

