

**3 July 2020 Daily Report on COVID-19****(1) Number of COVID-19 Cases****Figure 1.1:** Number of Cases Reported over the Past 14 Days

Press Release Date	Imported	Non-Imported Cases														All Cases
		Community Cases <sup>1</sup>										Dorm Residents				
		Linked Cases					Unlinked Cases <sup>2</sup>					Sub-Total	Incidence Rate (per 100,000)	No. of Cases	Incidence Rate (per 100,000)	
		SC/PR	G or F (work permit)	G or F (other pass types) <sup>3</sup>	Visitor	Sub-Total	SC/PR	G or F (work permit)	G or F (other pass types) <sup>4</sup>	Visitor	Sub-Total					
Before 20-Jun	581	756	274	150	4	1,184	439	113	70	5	627	1,811	-	39,223	-	41,615
20-Jun	0	0	1	0	0	1	0	1	0	0	1	2	0.037	216	67	218
21-Jun	0	1	2	4	0	7	2	1	0	0	3	10	0.19	252	78	262
22-Jun	0	0	0	0	0	0	0	1	0	0	1	1	0.019	217	67	218
23-Jun	0	0	1	0	0	1	1	1	1	0	3	4	0.074	115	36	119
24-Jun	0	1	1	2	0	4	1	2	0	0	3	7	0.13	184	57	191
25-Jun	0	0	2	0	0	2	1	0	2	0	3	5	0.093	108	33	113
26-Jun	0	4	0	1	0	5	1	0	0	0	1	6	0.11	213	66	219
27-Jun	0	4	1	1	0	6	1	3	1	0	5	11	0.20	280	87	291
28-Jun	0	2	2	0	0	4	4	2	2	0	8	12	0.22	201	62	213
29-Jun	0	1	1	0	0	2	3	1	0	0	4	6	0.11	196	61	202
30-Jun	1	1	1	0	0	2	1	2	0	0	3	5	0.093	240	74	246
1-Jul	4	1	3	0	0	4	5	1	0	0	6	10	0.19	201	62	215
2-Jul	1	6	2	0	0	8	2	0	0	0	2	10	0.19	177	55	188
3-Jul	3	3	3	2	0	8	0	2	1	0	3	11	0.20	155	48	169
Total since start of outbreak	590	780	294	160	4	1,238	461	130	77	5	673	1,911	-	41,978	-	44,479
Population at risk <sup>4</sup>												5,381,000		323,000		5,704,000
Prevalence												0.04%		13.00%		0.78%

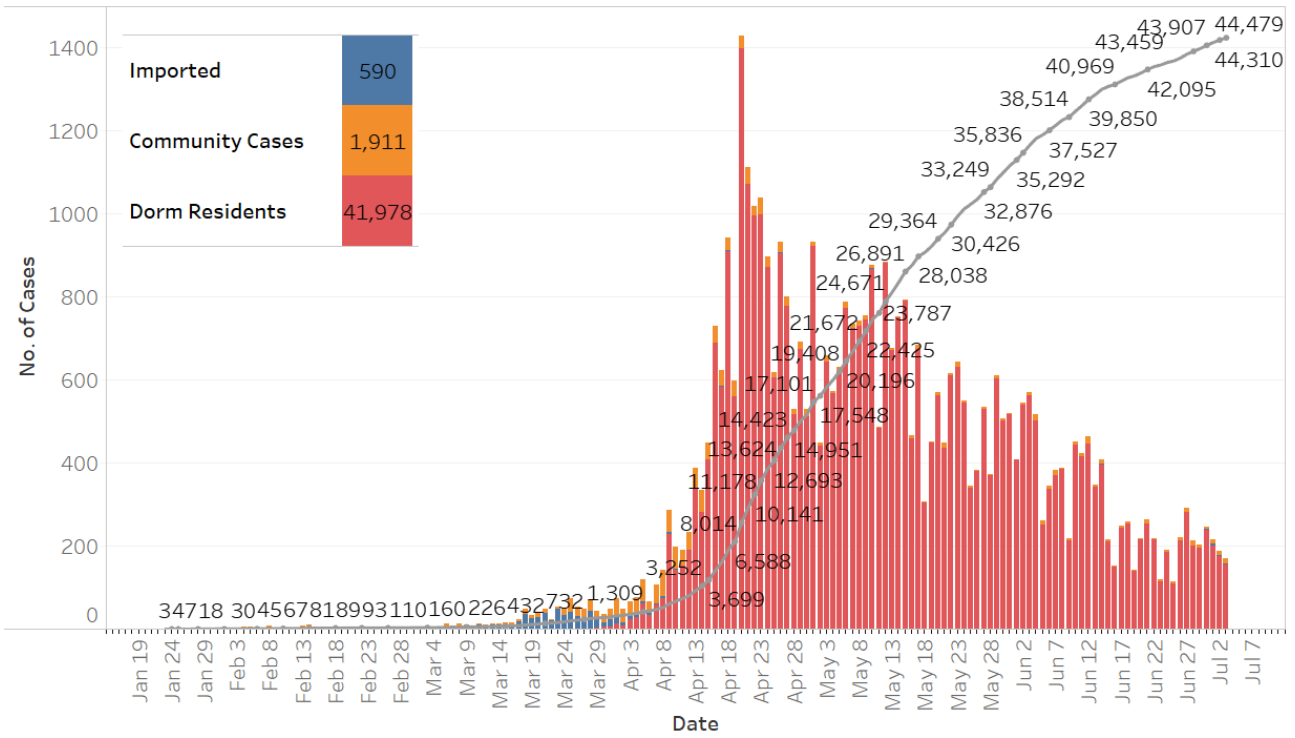
<sup>1</sup> Previously we had tracked the work permit holders living outside dormitories as a separate category, and put a large number of these workers on Stay Home Notices (SHN). The SHN for these workers has since expired. Hence we have now updated the definition of "Cases in the Community" to include all cases (including amongst work permit holders) that are detected outside of the dormitories.

<sup>2</sup> Includes cases pending epi-investigation.

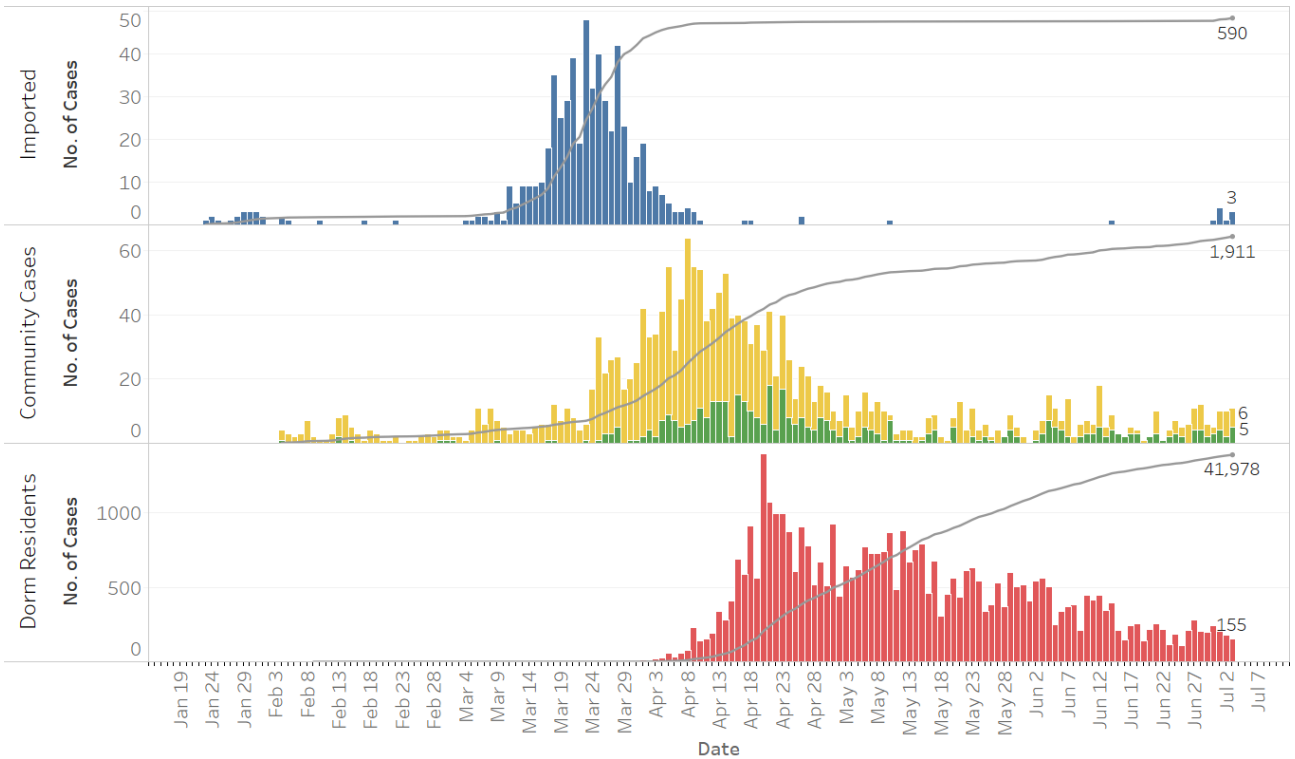
<sup>3</sup> Includes Training Work Permit (TWP) holders.

<sup>4</sup> Population at risk for community cases includes SC/PRs and work pass holders not residing in dormitories. Source: MOM and Singstat.

**Figure 1.2:** Epidemic Curve of the COVID-19 Outbreak by Press Release Date

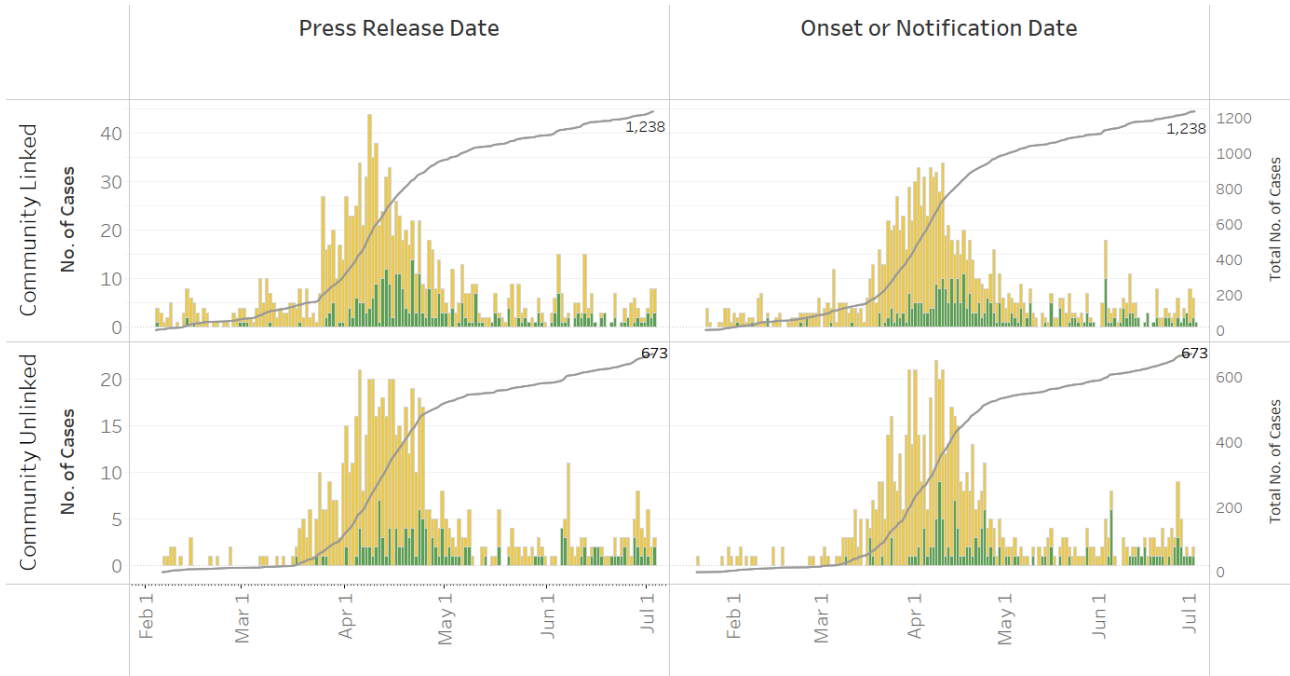


**Figure 1.3:** Epidemic Curve of the COVID-19 Outbreak by Press Release Date



**COVID-19 Cases**  
 ■ Imported  
 ■ Community Cases: SC/PR + G or F (other pass types) + Visitors  
 ■ Community Cases: G or F (work permit)  
 ■ Dorm Residents

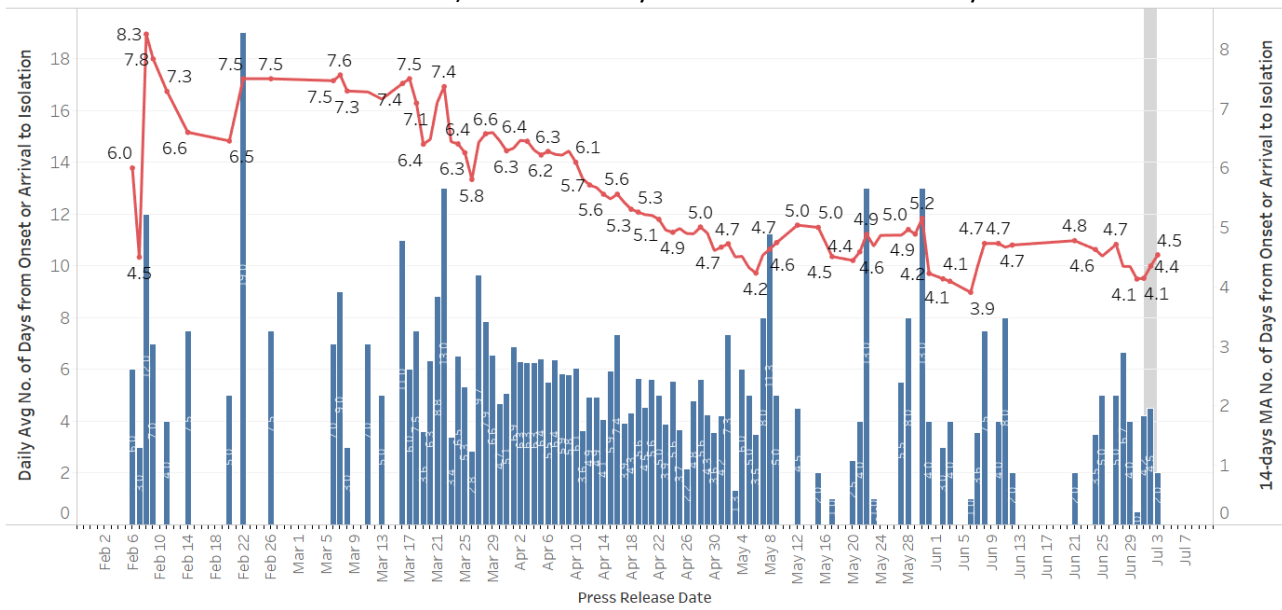
**Figure 1.4:** Epidemic Curve of Linked and Unlinked Cases among the Community by Press Release Date (left panel) and by Symptom Onset or Notification Date<sup>5</sup> (right panel)



**Community Cases**  
 ■ Community Cases: SC/PR + G or F (other pass types) + Visitors  
 ■ Community Cases: G or F (work permit)

<sup>5</sup> Date of notification was used for cases that did not display any symptoms. The numbers with onset in the past few days may see an increase as more cases are notified.

**Figure 1.5:** Average Number of Days from Onset of Symptoms to Isolation (QO, MOH contact, notification or admission) for Community Unlinked Cases in Each Day<sup>6</sup>



Line represents the 14-day moving average; Bar represents the daily average<sup>7</sup>

<sup>6</sup> Area in grey demarcates the data points for the past 3 days where some cases are still pending investigation. The bar chart shows the daily average number of days from onset date to isolation, while the line chart shows the moving average for the past 14 days. Both charts exclude cases with missing onset dates in the computation of the average.

<sup>7</sup> Asymptomatic community unlinked cases are not reflected in this chart. Community unlinked cases with symptoms who are isolated on the same day that symptoms occurred would have an isolation time of 0.

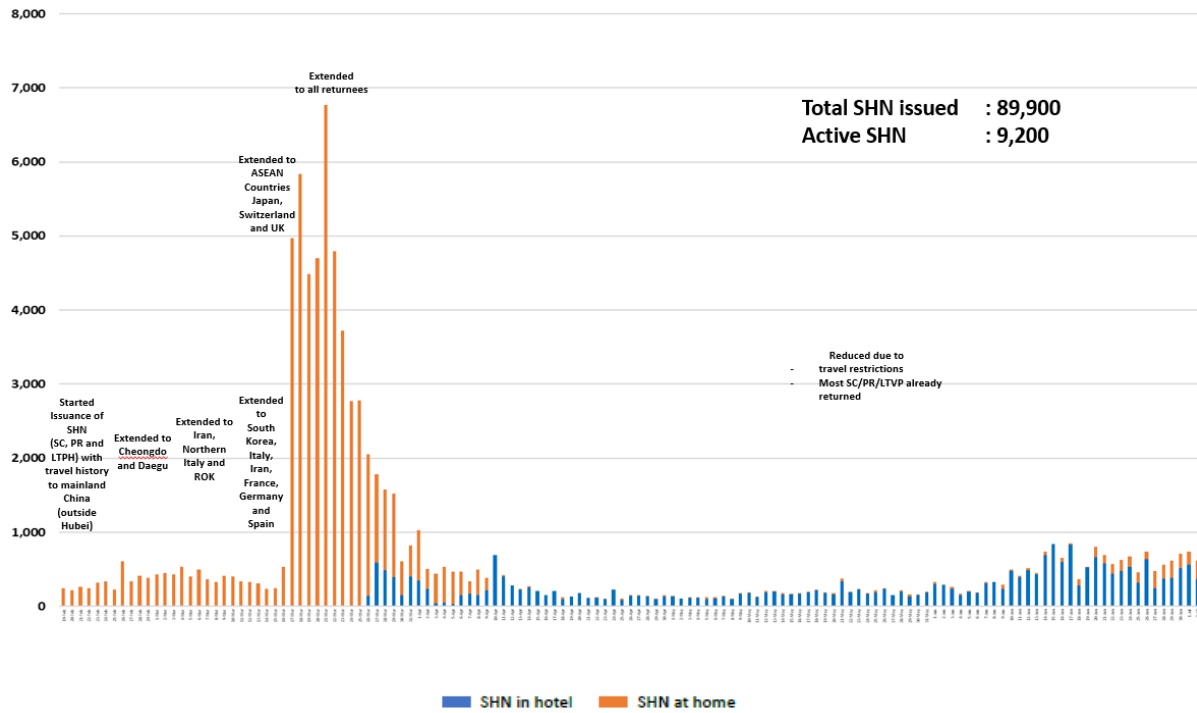
**(2) Number of COVID-19 Cases in Hospitals and Community Care Facilities****Figure 2.1:** Summary of Confirmed Cases by Status in the Past 14 Days

Press Release Date	Currently Admitted in Hospitals		In Care Facilities <sup>8</sup>	Total Recovered		Total Demised	Total
	ICU	General Wards		Completed Isolation	Discharged from Hospital		
20-Jun	1	184	7,398	32,540	1,684	26	<b>41,833</b>
21-Jun	1	178	6,948	33,247	1,695	26	<b>42,095</b>
22-Jun	1	199	6,497	33,882	1,708	26	<b>42,313</b>
23-Jun	1	191	6,219	34,283	1,712	26	<b>42,432</b>
24-Jun	1	188	6,109	34,582	1,717	26	<b>42,623</b>
25-Jun	1	188	5,917	34,886	1,718	26	<b>42,736</b>
26-Jun	1	182	5,921	35,095	1,730	26	<b>42,955</b>
27-Jun	1	173	5,883	35,429	1,734	26	<b>43,246</b>
28-Jun	1	183	5,741	35,756	1,752	26	<b>43,459</b>
29-Jun	1	196	5,453	36,224	1,761	26	<b>43,661</b>
30-Jun	1	214	5,166	36,734	1,766	26	<b>43,907</b>
1-Jul	1	208	4,876	37,238	1,773	26	<b>44,122</b>
2-Jul	1	200	4,654	37,645	1,784	26	<b>44,310</b>
3-Jul	1	222	4,461	37,980	1,789	26	<b>44,479</b>

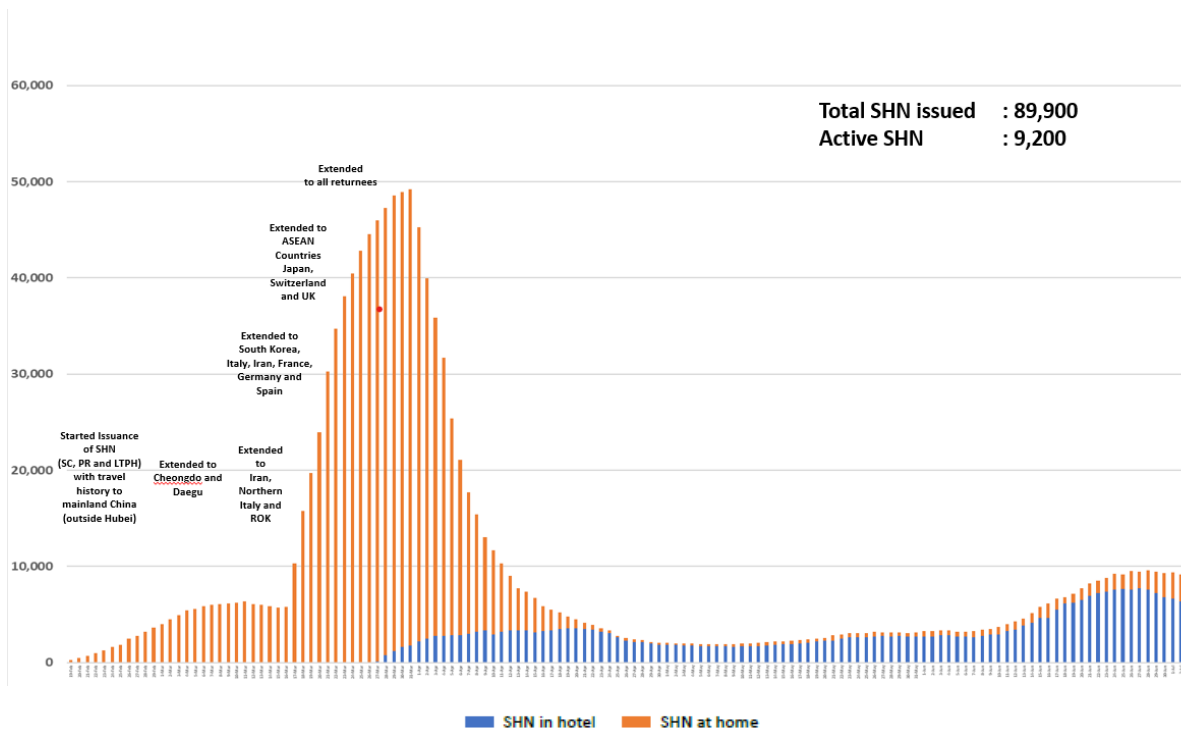
<sup>8</sup> Community Care/Recovery Facilities (i.e. D'Resort, EXPO, Changi Exhibition Centre, Tuas South), Private Hospitals (i.e. Concord International Hospital, Mt Elizabeth Hospital, Gleneagles Hospital, Mt Elizabeth Novena Hospital, Parkway East Hospital), Community Hospitals (i.e. Bright Vision Hospital, St. Andrew's Community Hospital, Jurong Community Hospital) and other care facilities.

### (3) Number of Stay-Home-Notice (SHN) Issued

**Figure 3.1:** Daily Number of SHN issued

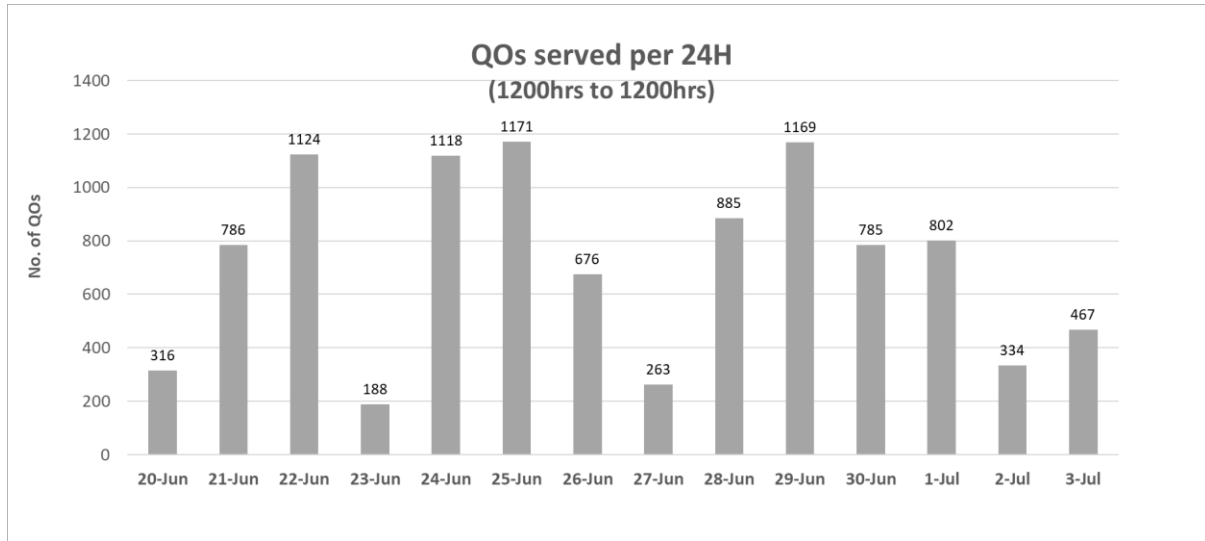


**Figure 3.2:** Active Stock Number of SHN (Home) and SHN (Hotel)



**(4) Number of Quarantine Order (QO) Issued**

**Figure 4.1:** Daily Number of QOs Issued



**Figure 4.2:** Active Number of Persons Under Quarantine (PUQs)

