

**3 June 2020 Daily Report on COVID-19****(1) Number of COVID-19 Cases****Figure 1.1:** Number of Cases Reported over the Past 14 Days

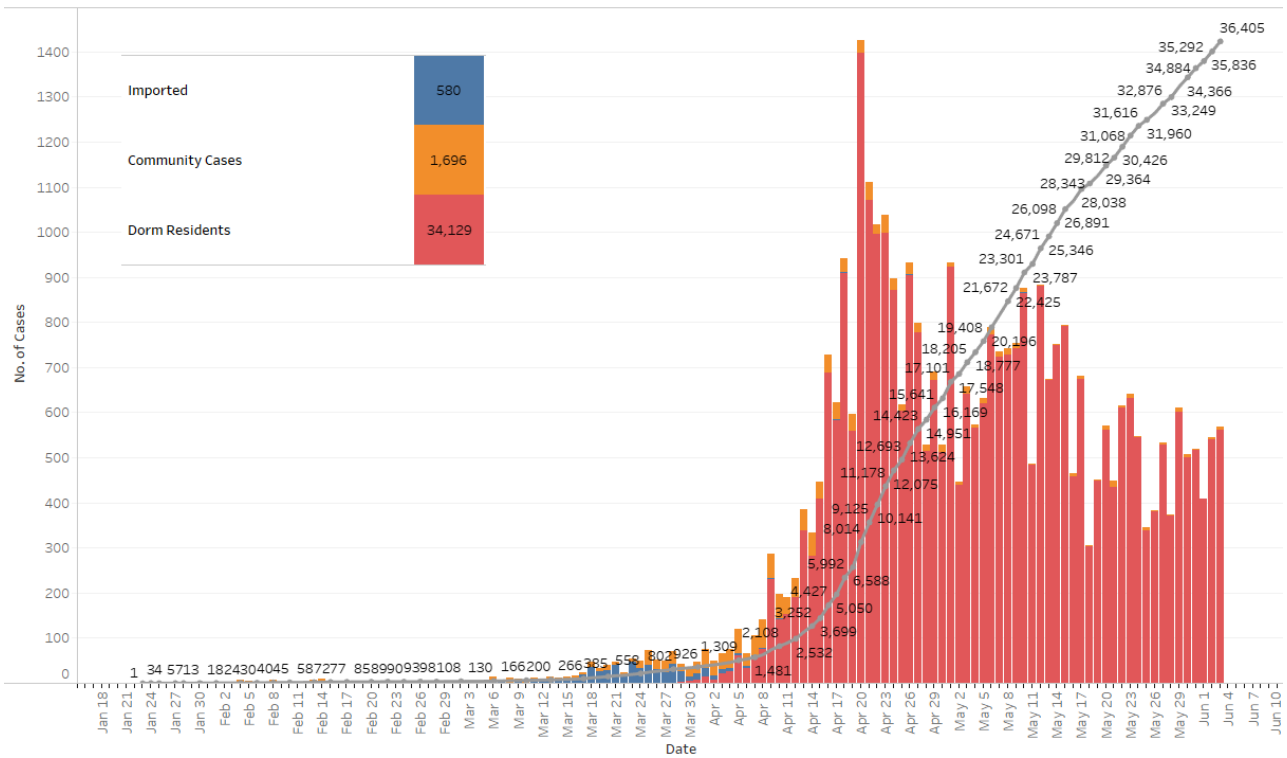
Press Release Date	Imported	Non-Imported Cases														All Cases
		Community Cases <sup>1</sup>										Dorm Residents				
		Linked Cases					Unlinked Cases <sup>2</sup>					Sub-Total	Incidence Rate (per 100,000)	No. of Cases	Incidence Rate (per 100,000)	
		SC/PR	G or F (work permit)	G or F (other pass types)	Visitor	Sub-Total	SC/PR	G or F (work permit)	G or F (other pass types)	Visitor	Sub-Total					
Before 21-May	580	697	221	121	4	1,043	412	100	64	4	580	1,623	-	27,161	-	29,364
21-May	0	9	0	0	0	9	4	0	0	0	4	13	0.24	435	130	448
22-May	0	2	0	0	0	2	2	0	0	0	2	4	0.074	610	190	614
23-May	0	4	2	2	0	8	2	0	1	0	3	11	0.20	631	200	642
24-May	0	2	0	0	0	2	1	1	0	0	2	4	0.074	544	170	548
25-May	0	2	2	0	0	4	2	0	0	0	2	6	0.11	338	100	344
26-May	0	0	1	0	0	1	1	0	0	0	1	2	0.037	381	120	383
27-May	0	2	0	0	0	2	1	0	1	0	2	4	0.074	529	160	533
28-May	0	0	0	0	0	0	0	2	0	0	2	2	0.037	371	110	373
29-May	0	2	2	1	0	5	1	2	1	0	4	9	0.17	602	190	611
30-May	0	0	1	1	0	2	2	1	0	0	3	5	0.093	501	160	506
31-May	0	0	0	0	0	0	2	0	0	0	2	2	0.037	516	160	518
01-Jun	0	0	0	0	0	0	0	0	0	0	0	0	0	408	130	408
02-Jun	0	1	1	1	0	3	0	0	1	0	1	4	0.074	540	170	544
03-Jun	0	0	3	3	0	6	1	0	0	0	1	7	0.13	562	170	569
Total since start of outbreak	580	721	233	129	4	1,087	431	106	68	4	609	1,696	-	34,129	-	36,405
Population at risk <sup>3</sup>												5,381,000		323,000		5,704,000
Prevalence												0.03%		10.57%		0.64%

<sup>1</sup> Previously we had tracked the work permit holders living outside dormitories as a separate category, and put a large number of these workers on Stay Home Notices (SHN). The SHN for these workers has since expired. Hence we have now updated the definition of "Cases in the Community" to include all cases (including amongst work permit holders) that are detected outside of the dormitories.

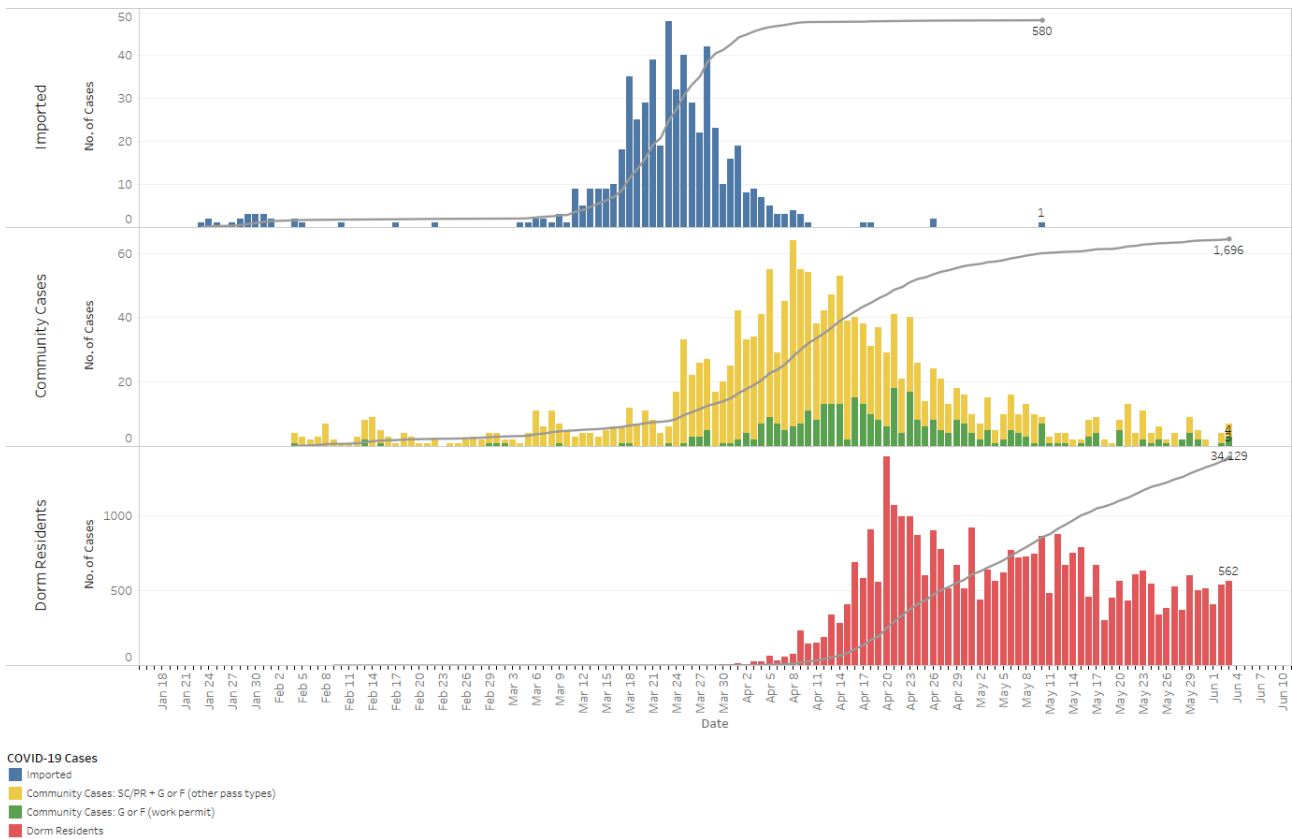
<sup>2</sup> Includes cases pending epi-investigation.

<sup>3</sup> Population at risk for community cases includes SC/PRs and work pass holders not residing in dormitories. Source: MOM and Singstat.

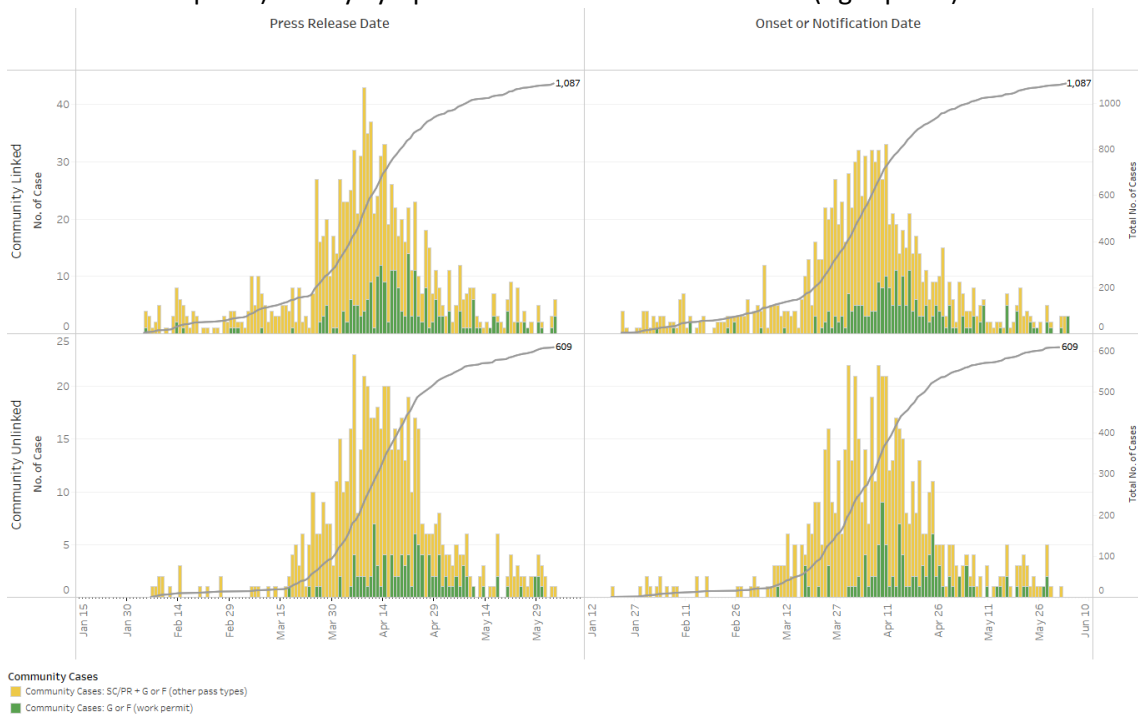
**Figure 1.2:** Epidemic Curve of the COVID-19 Outbreak by Press Release Date



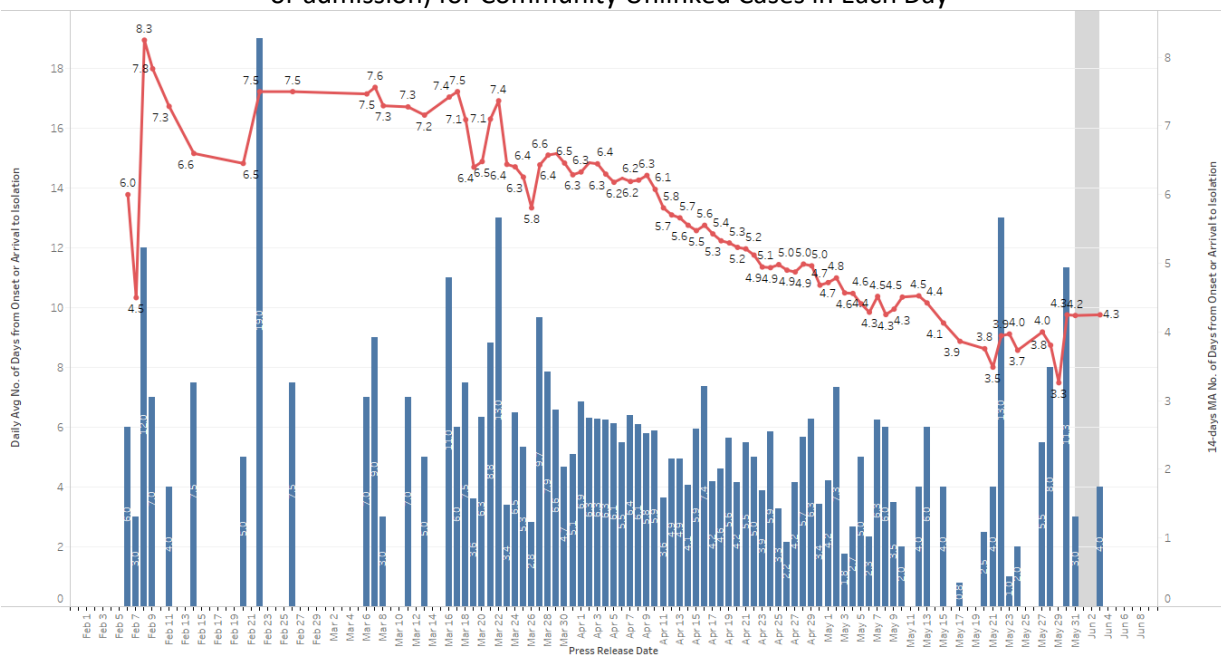
**Figure 1.3:** Epidemic Curve of the COVID-19 Outbreak by Press Release Date



**Figure 1.4:** Epidemic Curve of Linked and Unlinked Cases among the Community by Press Release Date (left panel) and by Symptom Onset or Notification Date<sup>4</sup> (right panel)



**Figure 1.5:** Average Number of Days from Onset of Symptoms to Isolation (QO, MOH contact, notification or admission) for Community Unlinked Cases in Each Day<sup>5</sup>



Line represents the 14-day moving average; Bar represents the daily average<sup>6</sup>

<sup>4</sup> Date of notification was used for cases that did not display any symptoms. The numbers with onset in the past few days may see an increase as more cases are notified.

<sup>5</sup> Area in grey demarcates the data points for the past 3 days where some cases are still pending investigation. The bar chart shows the daily average number of days from onset date to isolation, while the line chart shows the moving average for the past 14 days. Both charts exclude cases with missing onset dates in the computation of the average.

<sup>6</sup> The daily average of 13.0 on 22 May is attributed to a single case who had onset of symptoms on 8 May and was isolated on 21 May.

**(2) Number of COVID-19 Cases in Hospitals and Community Care Facilities****Figure 2.1:** Summary of Confirmed Cases by Status in the Past 14 Days

Press Release Date	Currently Admitted in Hospitals		In Care Facilities <sup>7</sup>	Total Recovered		Total Demised	Total
	ICU	General Wards		Completed Isolation	Discharged from Hospital		
21-May	10	891	16,771	11,017	1,100	23	<b>29,812</b>
22-May	8	790	16,650	11,833	1,122	23	<b>30,426</b>
23-May	8	703	16,452	12,731	1,151	23	<b>31,068</b>
24-May	8	682	16,027	13,686	1,190	23	<b>31,616</b>
25-May	8	599	15,592	14,521	1,217	23	<b>31,960</b>
26-May	8	577	15,291	15,203	1,241	23	<b>32,343</b>
27-May	7	518	15,052	16,007	1,269	23	<b>32,876</b>
28-May	7	503	14,422	16,996	1,298	23	<b>33,249</b>
29-May	8	453	13,745	18,298	1,333	23	<b>33,860</b>
30-May	7	367	13,242	19,305	1,422	23	<b>34,366</b>
31-May	8	313	12,841	20,245	1,454	23	<b>34,884</b>
1-Jun	7	337	12,458	21,004	1,462	24	<b>35,292</b>
2-Jun	6	325	12,306	21,706	1,469	24	<b>35,836</b>
3-Jun	5	329	12,465	22,089	1,493	24	<b>36,405</b>

<sup>7</sup> Community Care Facilities (i.e. D'Resort, EXPO, Changi Exhibition Centre, Tuas South), Private Hospitals (i.e. Concord International Hospital, Mt Elizabeth Hospital, Gleneagles Hospital, Mt Alvernia Hospital, Mt Elizabeth Novena Hospital, Parkway East Hospital, Farrer Park Hospital), Community Hospitals (i.e. Bright Vision Hospital, St. Andrew's Community Hospital, Yishun Community Hospital, Jurong Community Hospital, Sengkang Community Hospital) and other care facilities.

(3) Number of Stay-Home-Notice (SHN) Issued

Figure 3.1: Daily Number of SHN issued

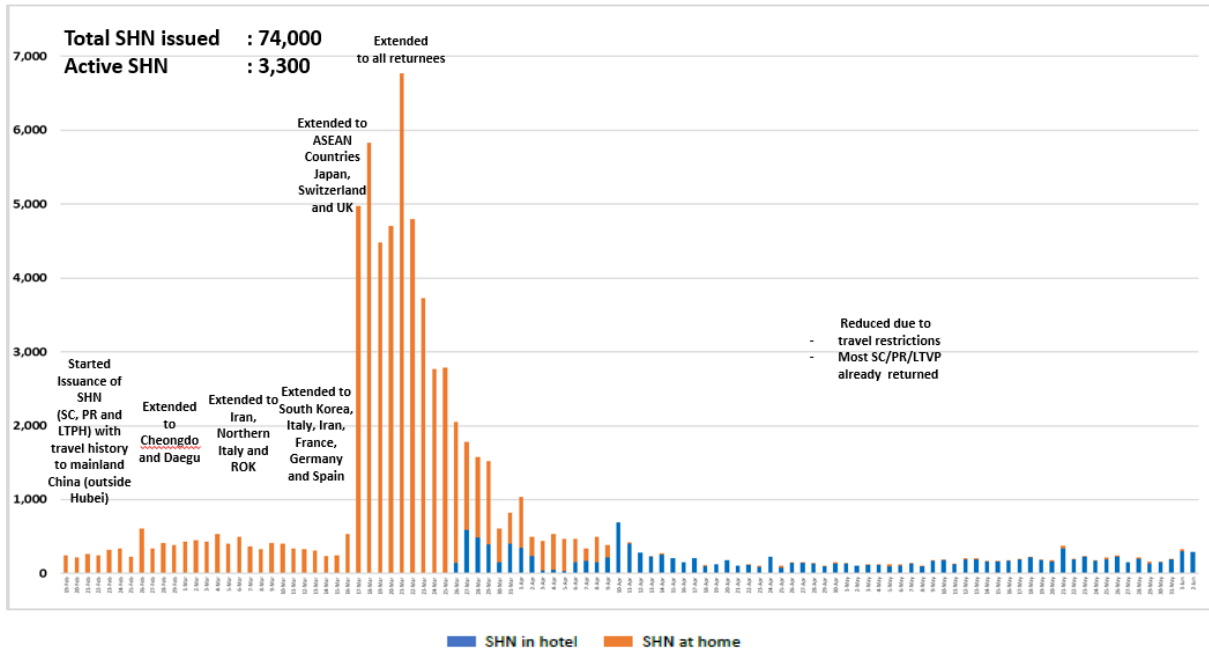
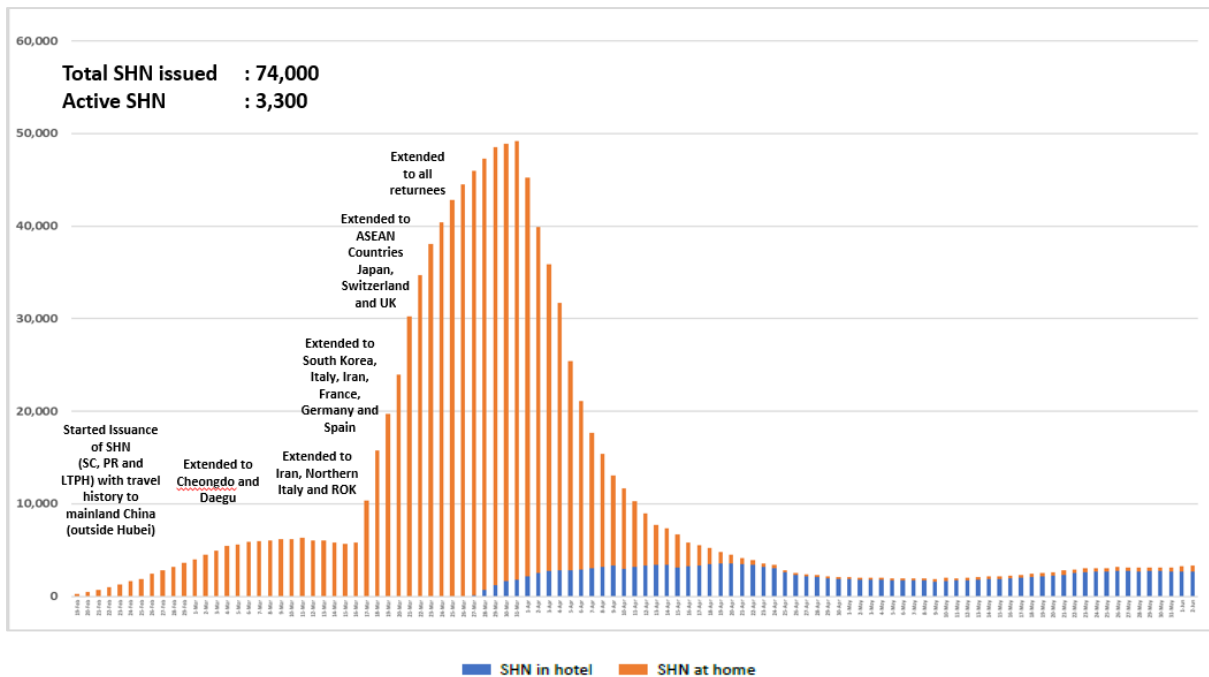
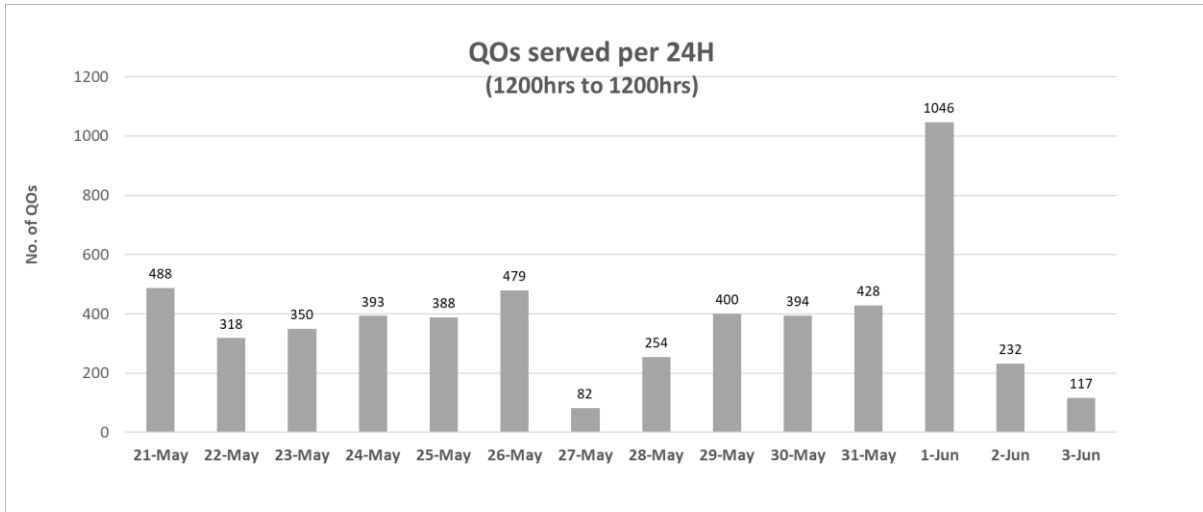


Figure 3.2: Active Stock Number of SHN (Home) and SHN (Hotel)



**(4) Number of Quarantine Order (QO) Issued**

**Figure 4.1:** Daily Number of QOs Issued



**Figure 4.2:** Active Number of Persons Under Quarantine (PUQs)

