


Revised subsidies for Specialist Outpatient Clinic care from 1 January 2023

Subsidy tiers at Specialist Outpatient Clinics (SOCs) have been revised for patients with a PCHI above \$3,300. These patients will now be eligible for subsidies of up to 40%.

These changes will allow resources to be distributed to those who are in greater need.



PCHI	Subsidy for Singapore Citizens
No PCHI	AV≤\$13k: 70% \$13k<AV≤\$21k: 50% AV>\$21k: 30%
\$0<PCHI≤\$1,200	70%
\$1,200<PCHI≤\$2,000	60%
\$2,000<PCHI≤\$3,300	50%
\$3,300<PCHI≤\$6,500	40%
PCHI>\$6,500	30%

Option for private acute inpatient and day surgery patients to select subsidised SOC follow-up care from 1 January 2023

Eligible private acute inpatient and day surgery patients can now opt for subsidised SOC follow-up care.

Accessible, affordable, better

The Ministry of Health is committed to ensuring that healthcare remains affordable for all Singaporeans.

Patients who require financial assistance after government subsidies, insurance and MediSave can continue to apply for financial assistance schemes through medical social workers.

For more information, please visit <https://go.gov.sg/whathss>



Ministry of Health (MOH) has introduced changes to the means-tested subsidy frameworks to ensure subsidies are better targeted at those who need it more.

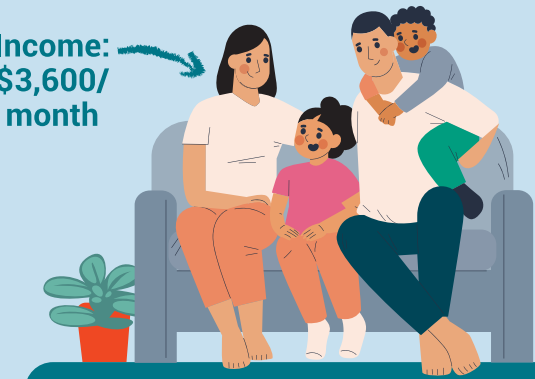
These improvements apply to inpatient care at acute and community hospitals, day surgeries, as well as specialist outpatient clinic care.

Using Per Capita Household Income (PCHI) for inpatient means-testing

Previously, means-testing was based on a patient's individual monthly income.

A breadwinner supporting a family of four would have received the same subsidies as someone with a similar income supporting a smaller family of two.

Moving forward, the use of PCHI will better reflect the means of a patient as it considers the overall financial resources of the household.



There are 4 people in this household

$$\text{PCHI} = \frac{\$3,600}{4} = \$900$$

New subsidy framework for acute inpatient care and day surgeries from 1 November 2022

A single, common subsidy framework has been applied to B2 and C wards, as well as day surgeries.

Previously, subsidies for day surgeries were not means-tested. Under the new common subsidy framework, patients will receive means-tested subsidies for day surgeries.

Patients were previously eligible for acute inpatient subsidies of 50% to 65% for B2 wards, and 65% to 80% for C wards.

Moving forward, patients in both B2 and C wards can receive subsidies of up to 80% based on their PCHI.



PCHI	Subsidy for Singapore Citizens
No PCHI	AV≤\$13k: 80% AV>\$13k: 50%
\$0<PCHI≤\$1,800	80%
\$1,800<PCHI≤\$2,000	75%
\$2,000<PCHI≤\$2,200	70%
\$2,200<PCHI≤\$2,500	65%
\$2,500<PCHI≤\$2,800	60%
\$2,800<PCHI≤\$3,100	55%
PCHI>\$3,100	50%

Annual Value (AV) is the estimated gross annual rent of a property if it were to be rented out, excluding furnishings and maintenance fees. It is determined by IRAS.

For more info, please visit <https://go.gov.sg/whatav>

Higher subsidies for community hospital sub-acute and rehabilitation services from 1 November 2022

There are also enhanced subsidies for sub-acute care and rehabilitation services at community hospitals.



PCHI	Subsidy for Singapore Citizens
No PCHI	AV≤\$13k: 80% AV>\$13k: 30%
\$0<PCHI≤\$1,200	80%
\$1,200<PCHI≤\$2,000	70%
\$2,000<PCHI≤\$2,200	60%
\$2,200<PCHI≤\$2,800	50%
\$2,800<PCHI≤\$3,300	40%
PCHI>\$3,300	30%

Enhanced Medication Assistance Fund (MAF) subsidies from 1 September 2022

Patients with a PCHI between \$2,800 and \$6,500 are now eligible for a subsidy of up to 50%.

More cancer drugs are now included in the list of drugs supported by MAF. This helps to ensure that clinically-proven and cost-effective drugs remain affordable for Singaporeans.