

A SAFE SINGAPORE

**Phase
1**

**Phase
2**

**Phase
3**

Safe Re-opening
Gradual re-opening
of some activities

Safe Transition
Broader re-opening of
social and economic activities

Safe Nation

Phase 1 - Safe Re-opening from 2 June 2020



Safe Workplaces

Some businesses re-open with Safe Management measures.



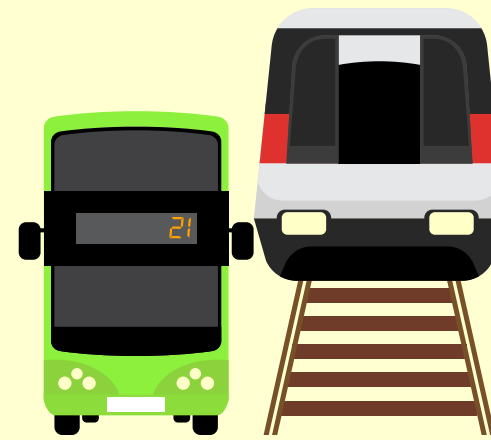
Safe Homes

Households can receive 2 visitors per day - must be children and/or grandchildren from the same household.



Safe Schools

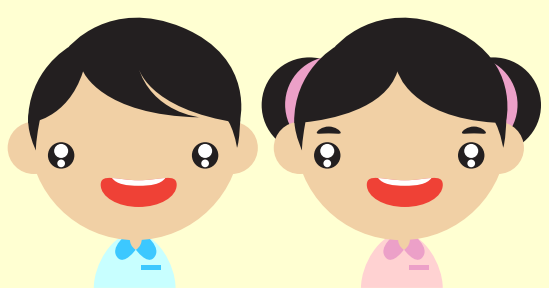
Primary and secondary school graduating cohorts attend school daily. Other students alternate between Home-Based Learning (HBL) and school.



Safe Commuting

All must wear mask. Avoid talking and maintain good personal hygiene.

Safe Community



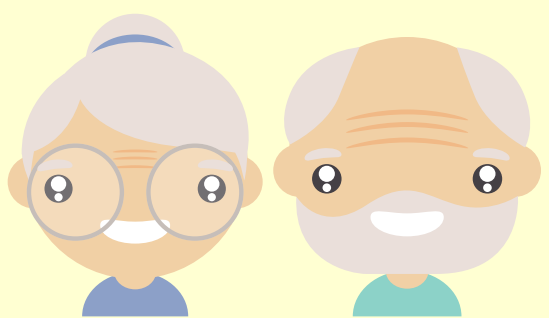
Care Arrangements for Children

Preschools will gradually re-open; fully by 10 June 2020. Student Care Centres will also resume.



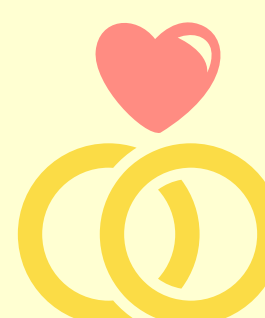
Places of worship

Re-open for private worship only.



Support for Seniors

Senior Activity Centres will gradually resume some activities in a safe and controlled manner to help seniors with little or no social support.



Marriage solemnisations

Can take place in-person, with 10 people in attendance.



Wear a mask when outside home
Check in and out with **SafeEntry** when required



Do not spread rumours

Get the latest on COVID-19 by signing up for the Gov.sg WhatsApp channel (www.go.gov.sg/whatsapp). The service is available in English, Chinese, Malay and Tamil.



A SAFE SINGAPORE

Phase
1

Phase
2

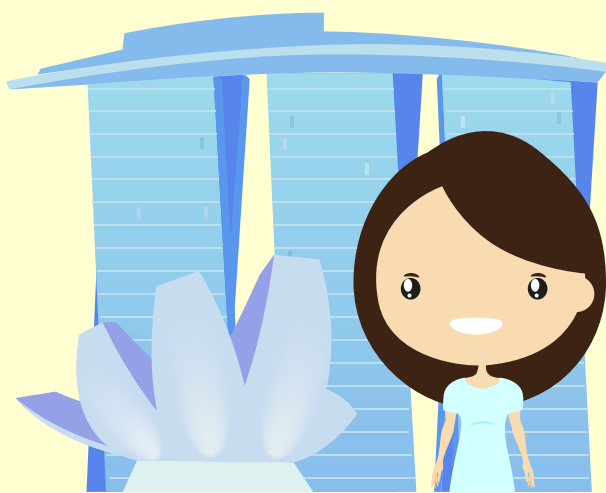
Phase
3

Safe Re-opening
Gradual re-opening
of some activities

Safe Transition
Broader re-opening of
social and economic activities

Safe Nation

Phase 2 - Safe Transition



Economy

More businesses will re-open, starting with F&B dine-in, retail outlets, gyms and fitness studios, tuition and enrichment centres. All must have safe management measures.



School

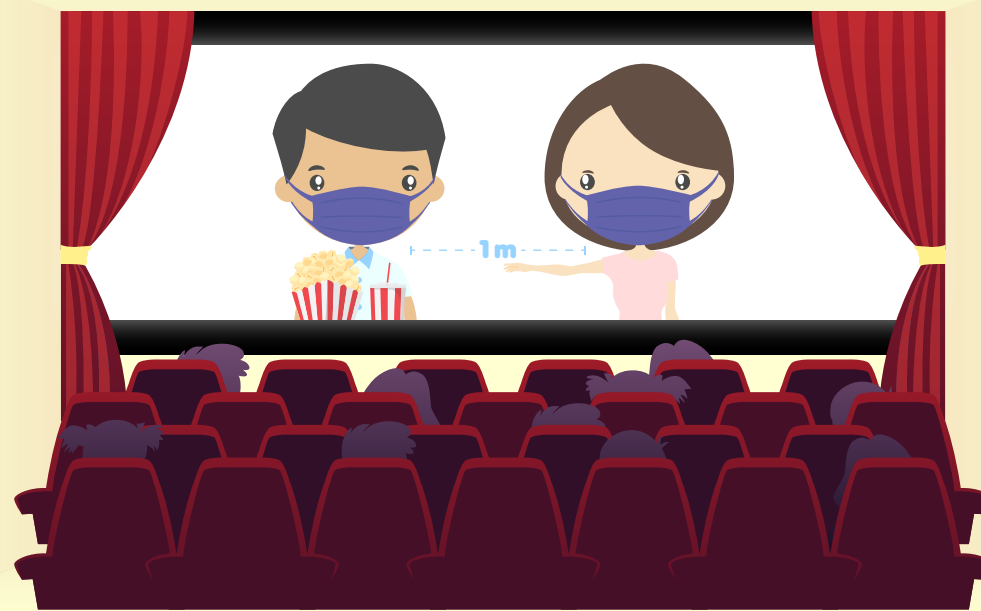
All students will return to school. Institutes of Higher Learning (IHLs) will increase the number of students back on campus at any one time for face-to-face learning.



Community

Sports, recreation and outdoor facilities will re-open, with safe management practices.

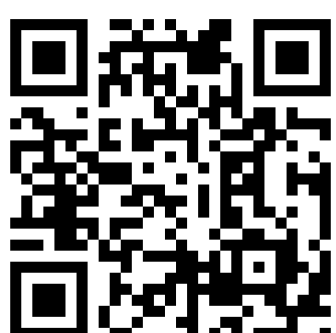
Phase 3 - Safe Nation



Social, cultural, religious and business gatherings or events would have resumed, with limited crowd sizes to prevent large clusters from arising.



Wear a mask when outside home
Check in and out with **SafeEntry** when required



Do not spread rumours

Get the latest on COVID-19 by signing up for the Gov.sg WhatsApp channel (www.go.gov.sg/whatsapp). The service is available in English, Chinese, Malay and Tamil.

