

Summary of Local COVID-19 Situation

Figure 1: Number of Community Unlinked and Linked Cases¹

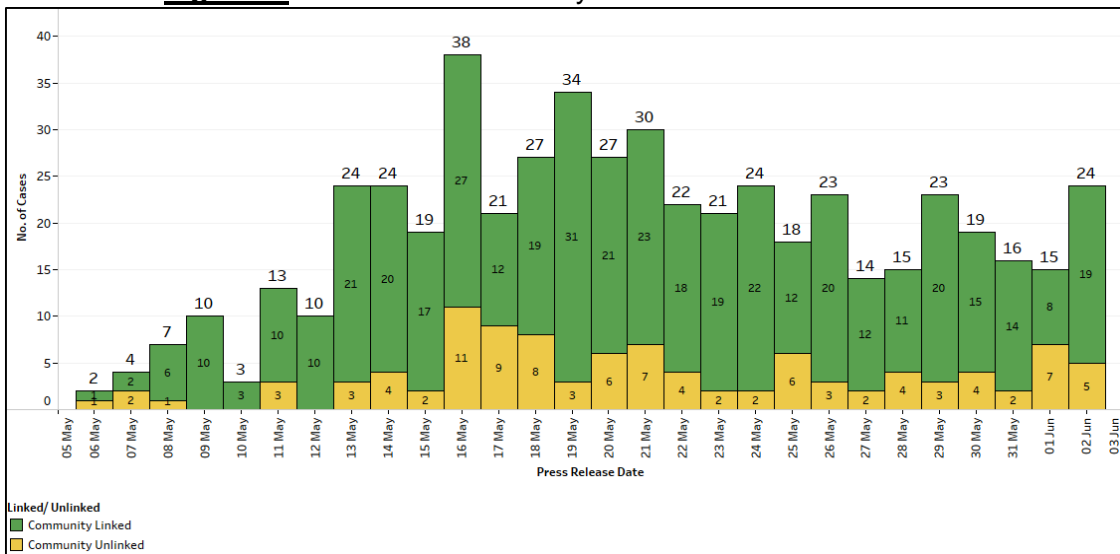
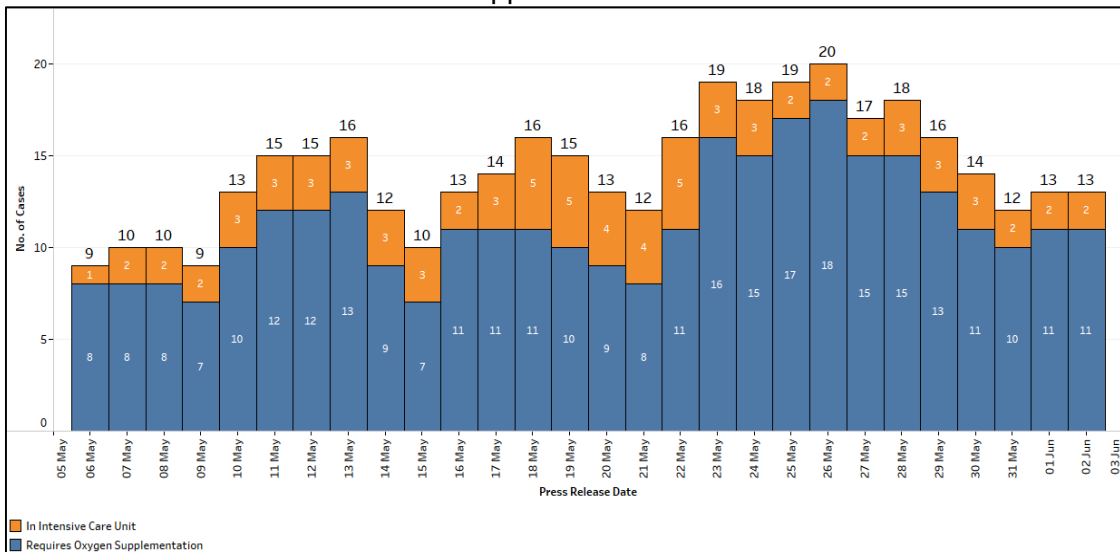


Figure 2: Number of Active Cases in Intensive Care Unit or Requiring Oxygen Supplementation



¹ Incorporates re-classifications of earlier reported cases.

Open Clusters

Epidemiological investigations and contact tracing have uncovered links between cases.

- i. 5 of the confirmed cases (Cases 63924, 63949, 63950, 63961 and 63962) are linked to the MINDSville@Napiri cluster with the most recent cases (Cases 63949, 63850, 63961 and 63962) linked to the cluster on 1 June. Case 63924 is a 37 year-old female Singaporean who is a resident at MINDSville@Napiri. She was confirmed to have COVID-19 infection on 31 May.
- ii. 3 of the confirmed cases (Cases 63941, 63963 and 63966) are linked to the Case 63941 cluster on 1 June. Case 63941 is a 36 year-old female Vietnam national who is a homemaker. She was confirmed to have COVID-19 infection on 1 June.
- iii. 6 of the confirmed cases (Cases 63887, 63908, 63920, 63928, 63940 and 63947) are linked to the Case 63887 cluster with the most recent cases (Case 63947) linked to the cluster on 31 May, and Case 63940 linked to the cluster on 1 June. Case 63887 is a 65 year-old female Singaporean who is a homemaker. She was confirmed to have COVID-19 infection on 30 May.
- iv. 25 of the confirmed cases (Cases 63507, 63677, 63740, 63760, 63761, 63765, 63798, 63799, 63802, 63830, 63831, 63832, 63836, 63837, 63839, 63842, 63843, 63898, 63905, 63906, 63907, 63929, 63952, 63953 and 63970) are linked to the Hong Ye Group cleaners cluster with the most recent cases (Cases 63952 and 63953) linked to the cluster on 1 June, and Case 63970 linked to the cluster on 2 June. Case 63507 is a 31 year-old male Singaporean who is employed by Hong Ye Group Pte Ltd as a cleaner at Changi Business Park. He was confirmed to have COVID-19 infection on 19 May.
- v. 15 of the confirmed cases (Cases 63160, 63253, 63294, 63300, 63426, 63427, 63428, 63491, 63522, 63526, 63680, 63731, 63751, 63826 and 63943) are linked to the Changi Prison Complex cluster, with the most recent case (Case 63943) linked to the cluster on 1 June. Case 63160 is a 39 year-old male China national who is employed by SATS Food Services Pte Ltd as a chef at Changi Prison Complex. He was confirmed to have COVID-19 infection on 13 May.
- vi. 10 of the confirmed cases (Cases 63853, 63854, 63874, 63883, 63884, 63885, 63886, 63896, 63903 and 63958) are linked to the NTUC Foodfare (308 Anchorvale Road) cluster with the most recent case (Case 63958) linked to the cluster on 1 June. Case 63853 is a 33 year-old male Malaysia national who works as a kitchen assistant at Hua Zai Eating House Pte Ltd. He was confirmed to have COVID-19 infection on 29 May.
- vii. 10 of the confirmed cases (Cases 63806, 63827, 63847, 63848, 63875, 63876, 63951, 63954, 63955 and 63968) are linked to the Case 63806 cluster with the most recent cases (Cases 63951, 63954 and 63955) linked to the cluster on 1 June, and Case 63968 linked to the cluster on 2 June. Case 63806 is a 49 year-old male Singapore Permanent Resident who works as a manager at Success Consultancy Pte Ltd. He was confirmed to have COVID-19 infection on 28 May.
- viii. 7 of the confirmed cases (Cases 63725, 63742, 63775, 63777, 63846, 63881 and 63960) are linked to the Chevy's Bar and Bistro cluster with the most recent case (Case 63960) linked to the cluster on 1 June. Case 63725 is a 58 year-old female Singaporean who works at Chevy's Bar and Bistro. She was confirmed to have COVID-19 infection on 25 May.

- ix. 3 of the confirmed cases (Cases 63399, 63900 and 63917) are linked to the Case 63399 cluster with the most recent case (Case 63917) linked to the cluster on 31 May. Case 63399 is a 35 year-old male Malaysia national who is a kitchen crew at Kota Zheng Zong Bak Kut Teh (Serangoon Gardens). He was confirmed to have COVID-19 infection on 17 May.
- x. 3 of the confirmed cases (Cases 63743, 63859 and 63938) are linked to the Case 63743 cluster with the most recent case (Case 63938) linked to the cluster on 1 June. Case 63743 is a 24 year-old male Malaysia national who works at McDonald's (The Woodgrove). He was confirmed to have COVID-19 infection on 26 May.
- xi. 4 of the confirmed cases (Cases 63721, 63748, 63752 and 63933) are linked to the Tektronix cluster with the most recent case (Case 63933) linked to the cluster on 31 May. Case 63721 is a 50 year-old male Singaporean who works as an engineer at Tektronix Southeast Asia Pte Ltd. He was confirmed to have COVID-19 infection on 24 May.
- xii. 7 of the confirmed cases (Case 63660, 63661, 63701, 63702, 63703, 63904 and 63923) are linked to Case 63660 cluster with the most recent case (Case 63923) linked to the cluster on 31 May. Case 63660 is a 31 year-old male Singaporean who works as a property agent with ERA Realty Network Pte Ltd. He was confirmed to have COVID-19 infection on 23 May.
- xiii. 3 of the confirmed cases (Cases 63844, 63890 and 63899) are linked to Case 63844 cluster with the most recent cases (Case 63890 and 63899) linked to the cluster on 30 May. Case 63844 is a 49 year-old female Singaporean who works as executive at Eng Soon Chair & Table Hire Service. She was confirmed to have COVID-19 infection on 28 May.
- xiv. 4 of the confirmed cases (Cases 63714, 63747, 63794 and 63909) are linked to the Case 63714 cluster with the most recent case (Case 63909) linked to the cluster on 30 May. Case 63714 is a 74 year-old male Singaporean who is a retiree. He was confirmed to have COVID-19 infection on 24 May.
- xv. 6 of the confirmed cases (Cases 63708, 63709, 63746, 63756, 63894 and 63895) are linked to the Case 63708 cluster with the most recent cases (Cases 63894 and 63895) linked to the cluster on 30 May. Case 63708 is a 15 year-old male Singaporean who is a student at Westwood Secondary School. He was confirmed to have COVID-19 infection on 24 May.
- xvi. 4 of the confirmed cases (Cases 63757, 63862, 63863 and 63864) are linked to the Case 63757 cluster with the most recent cases (Cases 63862, 63863 and 63864) linked to the cluster on 29 May. Case 63757 is a 67 year-old male Singaporean who is a retiree. He was confirmed to have COVID-19 infection on 26 May.
- xvii. 63 of the confirmed cases (Cases 62933, 63037, 63273, 63275, 63276, 63277, 63304, 63306, 63318, 63357, 63363, 63381, 63393, 63406, 63408, 63417, 63448, 63453, 63462, 63463, 63469, 63470, 63471, 63472, 63488, 63508, 63509, 63510, 63520, 63524, 63559, 63560, 63570, 63571, 63577, 63578, 63588, 63591, 63593, 63597, 63598, 63600, 63606, 63607, 63620, 63652, 63653, 63664, 63665, 63675, 63678, 63704, 63707, 63722, 63724, 63728, 63729, 63733, 63734, 63735, 63829, 63849 and 63882) are linked to the JEM/ Westgate cluster with the most recent case (Case 63882) linked to the cluster on 30 May. Case 62933 is a 53 year-old female Singaporean who works as a cleaner at Park Avenue Rochester. She was confirmed to have COVID-19 infection on 7 May.

- xviii. 20 of the confirmed cases (Cases 63534, 63535, 63569, 63603, 63624, 63629, 63668, 63669, 63676, 63682, 63694, 63713, 63717, 63726, 63732, 63791, 63793, 63796, 63834 and 63871) are linked to the McDonald's delivery riders cluster with the most recent case (Case 63871) linked to the cluster on 29 May. Case 63534 is a 27 year-old male Malaysia national who works as a delivery rider for IVIC Logistic Pte Ltd and McDonald's (Bedok Reservoir). He was confirmed to have COVID-19 infection on 20 May.
- xix. 5 of the confirmed cases (Cases 63446, 63656, 63773, 63866 and 63867) are linked to the Case 63446 cluster with the most recent cases (Cases 63866 and 63867) linked to the cluster on 29 May. Case 63446 is a 28 year-old male Singaporean who works as an engineer at Patec Pte Ltd. He was confirmed to have COVID-19 infection on 18 May.
- xx. 6 of the confirmed cases (Cases 63319, 63434, 63435, 63436, 63860 and 63861) are linked to the Case 63319 cluster, with the most recent cases (Cases 63860 and 63861) linked to the cluster on 29 May. Case 63319 is a 77 year-old female Singaporean who is a homemaker. She was confirmed to have COVID-19 infection on 15 May.
- xxi. 3 of the confirmed cases (Cases 63466, 63618 and 63804) are linked to the Case 63466 cluster with the most recent case (Case 63804) linked to the cluster on 27 May. Case 63466 is a 59 year-old female Singaporean who works at Mary Fashion and Trading. She was confirmed to have COVID-19 infection on 19 May.
- xxii. 7 of the confirmed cases (Cases 63335, 63460, 63523, 63579, 63758, 63759 and 63762) are linked to the Pacific Law Corporation cluster with the most recent cases (Case 63758, 63759 and 63762) linked to the cluster on 26 May. Case 63335 is a 57 year-old female Singaporean who works as an administrative personnel at Pacific Law Corporation. She was confirmed to have COVID-19 infection on 16 May.
- xxiii. 4 of the confirmed cases (Cases 63515, 63612, 63654 and 63741) are linked to the Case 63515 cluster with the most recent case (Case 63741) linked to the cluster on 25 May. Case 63515 is a 34 year-old male Singaporean who works as a technician at Singapore Refining Company Pte Ltd. He was confirmed to have COVID-19 infection on 20 May.
- xxiv. 5 of the confirmed cases (Case 63622, 63696, 63697, 63698, and 63723) are linked to the Harvest @ Woodlands dormitory cluster with the most recent case (Case 63723) linked to the cluster on 24 May. Case 63622 is a 46 year-old male Malaysia national who works as a construction worker at H&W Communications Pte Ltd. He was confirmed to have COVID-19 infection on 22 May.
- xxv. 32 of the confirmed cases (Cases 63131, 63184, 63185, 63186, 63187, 63188, 63251, 63259, 63268, 63279, 63281, 63282, 63285, 63288, 63296, 63297, 63298, 63325, 63337, 63353, 63386, 63390, 63391, 63400, 63422, 63424, 63438, 63481, 63663, 63667, 63706 and 63736) are linked to the Learning Point cluster, with the most recent case (Case 63736) linked to the cluster on 25 May. Case 63131 is a 50 year-old female Singaporean who works as a tutor at Learning Point. She was confirmed to have COVID-19 infection on 12 May.
- xxvi. 8 of the confirmed cases (Cases 63236, 63349, 63370, 63421, 63506, 63621, 63641 and 63727) are linked to the Case 63236 cluster, with the most recent case (Case 63727) linked to the cluster on 25 May. Case 63236 is a 53 year-old male Singaporean who works as a personal chauffeur. He was confirmed to have COVID-19 infection on 14 May.
- xxvii. 7 of the confirmed cases (Cases 63317, 63320, 63350, 63439, 63610, 63679 and 63739) are linked to the Marina Bay Sands Casino dealer cluster, with the most recent case (Case

63739) linked to the cluster on 25 May. Case 63317 is a 36 year-old male Malaysia national who works as a dealer at Marina Bay Sands Casino. He was confirmed to have COVID-19 infection on 16 May.

- xxviii. 3 of the confirmed cases (Cases 63543, 63551 and 63700) are linked to Case 63543 cluster with the most recent case (Case 63700) linked to the cluster on 24 May. Case 63543 is a 40 year-old male Singaporean who works as an operations personnel at The Meatery SG. He was confirmed to have COVID-19 infection on 21 May.
- xxix. 6 of the confirmed cases (Cases 63479, 63485, 63533, 63592, 63627 and 63699) are linked to the Case 63479 cluster with the most recent case (Case 63699) linked to the cluster on 23 May. Case 63479 is a 49 year-old female Singapore Permanent Resident who is a homemaker. She was confirmed to have COVID-19 infection on 20 May.
- xxx. 48 of the confirmed cases (Cases 62541, 62557, 62561, 62567, 62568, 62573, 62574, 62582, 62599, 62615, 62635, 62643, 62648, 62680, 62687, 62697, 62713, 62714, 62715, 62717, 62721, 62722, 62723, 62724, 62731, 62732, 62754, 62781, 62784, 62786, 62787, 62790, 62791, 62794, 62795, 62801, 62803, 62807, 62808, 62816, 63007, 63008, 63009, 63104, 63168, 63248, 63617 and 63630) are linked to the Tan Tock Seng Hospital cluster, with the most recent case (Case 63630) linked to the cluster on 23 May. Case 62541 is a 46 year-old female who is a nurse at Tan Tock Seng Hospital, and was deployed at Ward 9D, a general ward. She was confirmed to have COVID-19 infection on 27 April.
- xxxi. 4 of the confirmed cases (Case 63376, 63476, 63537 and 63681) are linked to Case 63376 cluster with the most recent case (Case 63681) linked to the cluster on 24 May. Case 63376 is a 46 year-old female Singaporean who is an investment banker at DBS. She was confirmed to have COVID-19 infection on 17 May.
- xxxii. 3 of the confirmed cases (Cases 63392, 63517 and 63601) are linked to the Case 63392 cluster with the most recent case (Case 63601) linked to the cluster on 22 May. Case 63392 is a 39 year-old female Singaporean who is a manager at Corner Stone Global Partners Pte Ltd. She was confirmed to have COVID-19 infection on 17 May.
- xxxiii. 108 of the confirmed cases (Cases 62873, 62940, 62941, 62942, 62945, 62971, 62972, 62998, 63005, 63015, 63026, 63047, 63055, 63059, 63060, 63061, 63070, 63071, 63072, 63074, 63084, 63091, 63094, 63095, 63096, 63097, 63098, 63100, 63109, 63115, 63117, 63118, 63119, 63120, 63122, 63125, 63126, 63128, 63129, 63132, 63135, 63136, 63138, 63139, 63140, 63141, 63146, 63148, 63149, 63150, 63165, 63167, 63169, 63177, 63178, 63179, 63180, 63181, 63191, 63192, 63194, 63195, 63219, 63221, 63235, 63238, 63239, 63240, 63242, 63243, 63252, 63255, 63256, 63257, 63269, 63270, 63291, 63305, 63316, 63324, 63343, 63344, 63346, 63347, 63351, 63382, 63387, 63389, 63416, 63423, 63431, 63444, 63445, 63447, 63452, 63458, 63459, 63464, 63473, 63474, 63518, 63519, 63528, 63553, 63586, 63605, 63615 and 63616) are linked to the Changi Airport Terminal 3 cluster, with the most recent cases (Cases 63605, 63615 and 63616) linked to the cluster on 22 May. Case 62873 is an 88 year-old male Singaporean who is employed by Ramky Cleantech Services Pte Ltd as a cleaner deployed at Changi Airport Terminal 3. He was confirmed to have COVID-19 infection on 5 May.
- xxxiv. 3 of the confirmed cases (Cases 63290, 63383 and 63384) are linked to the Case 63290 cluster, with the most recent cases (Cases 63383 and 63384) linked to the cluster on 17 May. Case 63290 is a 64 year-old female Singapore Permanent Resident who is currently unemployed. She was confirmed to have COVID-19 infection on 15 May.
- xxxv. 3 of the confirmed cases (Cases 63414, 63584 and 63585) are linked to the Case 63414 cluster with the most recent cases (Cases 63584 and 63585) linked to the cluster on 21

May. Case 63414 is a 40 year-old male Singaporean who works as a vending machine loader at Warburg Pte Ltd, and a food delivery rider for Deliveroo and Grab. He was confirmed to have COVID-19 infection on 18 May.

- xxxvi. 3 of the confirmed cases (Cases 63513, 63516 and 63572) are linked to the Case 63516 cluster with the most recent case (Case 63572) linked to the cluster on 21 May. Case 63516 is a 28 year-old female Singaporean who is a homemaker. She was confirmed to have COVID-19 infection on 20 May.
- xxxvii. 3 of the confirmed cases (Cases 63487, 63574 and 63581) are linked to the Case 63487 cluster with the most recent cases (Cases 63574 and 63581) linked to the cluster on 21 May. Case 63487 is a 19 year-old female Malaysia national who is a student at Singapore Polytechnic. She was confirmed to have COVID-19 infection on 19 May.
- xxxviii. 9 of the confirmed cases (Cases 63271, 63278, 63412, 63425, 63442, 63461, 63468, 63477 and 63511) are linked to the Jin Tai Tong Food Industries cluster, with the most recent case (Case 63511) linked to the cluster on 20 May. Case 63271 is a 55 year-old male Singaporean who works as a warehouse assistant at Jin Tai Mart. He was confirmed to have COVID-19 infection on 15 May.
- xxxix. 3 of the confirmed cases (Cases 63336, 63388 and 63440) are linked to the Case 63336 cluster, with the most recent case (Case 63440) linked to the cluster on 18 May. Case 63336 is a 22 year-old female Singaporean who works at Invade Industry Pte Ltd. She was confirmed to have COVID-19 infection on 16 May.
- xl. 3 of the confirmed cases (Cases 63292, 63455 and 63456) are linked to the Case 63292 cluster, with the most recent cases (Cases 63455 and 63456) linked to the cluster on 19 May. Case 63292 is a 29 year-old male Singaporean who works as a digital web designer. He was confirmed to have COVID-19 infection on 15 May.
- xli. 4 of the confirmed cases (Cases 63166, 63241, 63280 and 63365) are linked to the WOK HEY cluster, with the most recent case (Case 63365) linked to the cluster on 17 May. Case 63166 is a 22 year-old male Singaporean who works as a cook at WOK HEY (White Sands). He was confirmed to have COVID-19 infection on 13 May.
- xlii. 3 of the confirmed cases (Cases 62969, 63083 and 63092) are linked to the Grab cluster, with the most recent case (Case 63092) linked to the cluster on 11 May. Case 62969 is a 38 year-old male Singaporean who works as a private hire car driver with Grab. He was confirmed to have COVID-19 infection on 8 May.
- xliii. 7 of the confirmed cases (Cases 62113, 62348, 62349, 62350, 62365, 62485 and 63078) are linked to the MT ALLI cluster, with the most recent case (Case 63078) linked to the cluster on 10 May. Case 62113 is a 39 year-old Indonesian national who is a sea crew on board bunker tanker MT ALLI, and was confirmed to have COVID-19 infection on 16 April.
- xliv. 5 of the confirmed cases (Cases 62824, 62877, 62906, 62938 and 62939) are linked to the Pasir Panjang Terminal cluster, with the most recent cases (Case 62938 and 62939) linked to the cluster on 7 May. Case 62824 is a 59 year-old male Singaporean who is employed by GKE Express Logistics Pte Ltd as a trailer truck driver at Brani Terminal and Pasir Panjang Terminal. He was confirmed to have COVID-19 infection on 4 May.

Summary of Cases in the Community

	Case Number	Date of Confirmation	Onset date	Age (years)	Gender	Nationality	Exposure	Key Places Visited after Symptoms Onset/ Swab (for asymptomatic cases)	Links/ Cluster
*	63939	1 Jun	Asymptomatic	22	F	Myanmar	Local unlinked		
#	63940	1 Jun	Asymptomatic	93	F	SC	Local linked		Case 63887 cluster
*	63941	1 Jun	29 May	36	F	Vietnam	Local unlinked		Case 63941 cluster
#	63943	1 Jun	Asymptomatic	46	M	SC	Local linked		Changi Prison Complex cluster
#	63947	31 May	Asymptomatic	28	M	SC	Local linked		Case 63887 cluster
#	63949	1 Jun	29 May	30	F	Philippines	Local linked		MINDSville@Napiri cluster
#	63950	1 Jun	31 May	55	F	SC	Local linked		MINDSville@Napiri cluster
#	63951	1 Jun	Asymptomatic	61	M	SC	Local linked		Case 63806 cluster
#	63952	1 Jun	Asymptomatic	52	F	SC	Local linked		Hong Ye Group cleaners cluster
#	63953	1 Jun	Asymptomatic	4	M	SC	Local linked		Hong Ye Group cleaners cluster
#	63954	1 Jun	Asymptomatic	36	F	PR	Local linked		Case 63806 cluster
#	63955	1 Jun	29 May	61	F	SC	Local linked		Case 63806 cluster
#	63958	1 Jun	29 May	20	F	Vietnam	Local linked		NTUC Foodfare (308 Anchorvale Road) cluster
#	63960	1 Jun	28 May	30	F	Malaysia	Local linked		Chevy's Bar and Bistro cluster
#	63961	1 Jun	1 Jun	64	F	SC	Local linked		MINDSville@Napiri cluster

	Case Number	Date of Confirmation	Onset date	Age (years)	Gender	Nationality	Exposure	Key Places Visited after Symptoms Onset/ Swab (for asymptomatic cases)	Links/ Cluster
#	63962	1 Jun	1 Jun	47	F	SC	Local linked		MINDSville@Napiri cluster
#	63963	1 Jun	17 May	3	M	SC	Local linked		Case 63941 cluster
*	63964	1 Jun	30 May	61	F	SC	Local unlinked		
#	63966	1 Jun	28 May	71	F	SC	Local linked		Case 63941 cluster
*	63968	2 Jun	31 May	39	M	SC	Local linked		Case 63806 cluster
#	63969	2 Jun	29 May	24	M	Malaysia	Local linked	Atatcutz	Contact of Case 63936
#	63970	2 Jun	31 May	9	M	SC	Local linked		Hong Ye Group cleaners cluster
*	63971	2 Jun	29 May	43	F	SC	Local unlinked		
*	63973	2 Jun	Asymptomatic	80	F	SC	Local unlinked		

Cases marked (#) had already been quarantined earlier.

Cases marked (*) were detected as a result of our proactive screening and surveillance.

Summary of Imported Cases

	Case Number	Date of Confirmation	Onset date	Age (years)	Gender	Nationality	Travel History	Exposure	Links	Cluster
~	63944	1 Jun	Asymptomatic	43	F	SC	India	Imported		
~	63945	1 Jun	Asymptomatic	41	M	PR	India	Imported		
~	63946	1 Jun	Asymptomatic	39	F	PR	India	Imported		
~	63956	1 Jun	30 May	6	F	PR	India	Imported	Contact of Cases 63490 and 63901	
~	63957	1 Jun	Asymptomatic	34	M	India (Long-Term Visit Pass holder)	India	Imported		
~	63959	1 Jun	1 Jun	57	M	SC	UAE	Imported		
~	63965	1 Jun	Asymptomatic	62	M	PR	India	Imported		

Cases marked (~) had already been placed on Stay-Home Notice upon arrival in Singapore.

Public Places Visited by Cases in the Community during Infectious Period²

Date	Time	Location (Address)
19 to 21 May	0800h to 2200h	Westgate (3 Gateway Drive)
19 to 21 May	0930h to 2130h	Holland Piazza (3 Lorong Liput) <ul style="list-style-type: none"> Tiger Sugar
19 May	1030h to 2000h	Westgate (3 Westgate Drive) <ul style="list-style-type: none"> Fun Toast
19 to 30 May	1320h to 1530h	NTUC FairPrice (301 Yishun Avenue 2)
19 May	1420h to 1500h	Health Management Centre (809 French Road)
19 May	1420h to 1525h	Woodlands Civic Centre (900 South Woodlands Drive) <ul style="list-style-type: none"> Workforce Singapore's Careers Connect
19 May	1430h to 1535h	NTUC FairPrice (301 Yishun Avenue 2)
19 May	1515h to 1550h	Causeway Point (1 Woodlands Square) <ul style="list-style-type: none"> Tonkotsu Hototogisu
19 May	1520h to 2100h	Westgate (3 Gateway Drive) <ul style="list-style-type: none"> Pizza Hut
19 May	1600h to 2300h	Punggol Plaza (168 Punggol Field)
19 to 20 May	1600h to 0020h	Resorts World Sentosa Casino (8 Sentosa Gateway)
19 May	1745h to 1830h	Westgate (3 Gateway Drive) <ul style="list-style-type: none"> RedMan by Phoon Huat
20 May	0810h to 1255h	Resorts World Sentosa Casino (8 Sentosa Gateway)
20 May	1150h to 1225h	Prime Supermarket (373 Bukit Batok Street 31)
20 May	1340h to 1510h	Kaki Bukit Recreation Centre (7 Kaki Bukit Avenue 3) <ul style="list-style-type: none"> POSB Account Services Centre
20 May	1420h to 1520h	ION Orchard (2 Orchard Turn) <ul style="list-style-type: none"> FLNT at 1-ATICO
20 May	1510h to 2100h	Westgate (3 Gateway Drive) <ul style="list-style-type: none"> Pizza Hut
20 May	1600h to 2300h	Punggol Plaza (168 Punggol Field)
20 May	1700h to 2200h	Poke Theory (238 Thomson Road)
20 May	1730h to 1820h	Chinatown Point (133 New Bridge Road)
20 May	1820h to 1920h	Rains Foot Massage (6 Hougang Avenue 3)

² Excludes residence, workplaces, healthcare facilities and public transport. This list will be updated on a rolling 14-days basis, i.e. one incubation period, and as epidemiological investigations progress.

Date	Time	Location (Address)
21 May	0845h to 0915h	Quan Shui Wet Market (156 Bukit Batok Street 11)
21 May	0915h to 0950h	Le Quest Mall (4 Bukit Batok Street 41) <ul style="list-style-type: none"> FairPrice Finest
21 May	1030h to 1100h	Sri Murugan Hill Temple (931 Upper Bukit Timah Road)
21 May	1100h to 1600h	Punggol Plaza (168 Punggol Field)
21 May	1100h to 2100h	Indobowl and Royz et Vous (37 & 39 Sultan Gate)
21 May	1105h to 1155h	Al Forno (East Coast) Pte Ltd (400 East Coast Road)
21 May	1415h to 1500h	POSB Bukit Batok Central Branch (636 Bukit Batok Central)
21 May	1445h to 2100h	Westgate (3 Gateway Drive) <ul style="list-style-type: none"> Pizza Hut
21 May	1515h to 1600h	JEM (50 Jurong Gateway Road) <ul style="list-style-type: none"> FairPrice Xtra
21 May	1600h to 1635h	Da Jin Factory Building (362 Upper Paya Lebar Road)
21 May	1720h to 1750h	PLQ Mall (10 Paya Lebar Road)
21 May	1720h to 1755h	NTP+ (151 Lorong Chuan) <ul style="list-style-type: none"> The Social Alley, Singapore
21 May	1810h to 1940h	Parkway Parade (80 Marine Parade Road)
21 May	1820h to 1900h	Keat Hong Shopping Centre (253 Choa Chu Kang Avenue 1) <ul style="list-style-type: none"> KFC
21 May	1905h to 1940h	VivoCity (1 HarbourFront Walk) <ul style="list-style-type: none"> DAISO
21 May	1940h to 2010h	VivoCity (1 HarbourFront Walk) <ul style="list-style-type: none"> Toys"R"Us
21 May	2010h to 2110h	Bukit Batok Golf Range (2 Bukit Batok West Avenue 7)
21 May	2100h to 2130h	Boon Lay Shopping Centre (221 Boon Lay Place) <ul style="list-style-type: none"> NTUC FairPrice
22 May	0000h to 0400h	The Woodgrove (30 Woodlands Avenue 1) <ul style="list-style-type: none"> McDonald's
22 May	0740h to 2000h	West Mall (1 Bukit Batok Central Link) <ul style="list-style-type: none"> Subway
22 May	1220h to 1300h	Hup Choon Eating House (1 Binjai Park)
22 May	1230h to 1300h	NTUC FairPrice (1 Jalan Bukit Merah)
22 May	1435h to 1510h	Sunshine Place (475 Choa Chu Kang Avenue 3) <ul style="list-style-type: none"> Giant Supermarket

Date	Time	Location (Address)
22 May	1500h to 2100h	Westgate (3 Gateway Drive) <ul style="list-style-type: none"> • Pizza Hut
22 May	1515h to 1620h	Joo Chiat Complex (1 Joo Chiat Road)
22 May	1520h to 1625h	Mustafa Centre (145 Syed Alwi Road)
22 May	1530h to 1630h	Bukit Timah Plaza (1 Jalan Anak Bukit) <ul style="list-style-type: none"> • FairPrice Finest
22 May	1605h to 1700h	KINEX (11 Tanjong Katong Road) <ul style="list-style-type: none"> • Eccellente by HAO Mart
22 May	1620h to 1655h	Le Quest Mall (4 Bukit Batok Street 41) <ul style="list-style-type: none"> • FairPrice Finest
22 May	1705h to 1740h	Lucky Plaza (304 Orchard Road)
22 May	1710h to 1800h	Hafary Pte Ltd (560 Balestier Road)
22 May	1730h to 1800h	Bukit Timah Plaza (1 Jalan Anak Bukit) <ul style="list-style-type: none"> • FairPrice Finest
22 May	1900h to 2015h	Lemongrass (476 Upper Serangoon View)
23 May	0815h to 0920h	Sheng Siong Supermarket (108 McNair Road)
23 May	1100h to 1225h	Jurong Point (1 Jurong West Central 2)
23 May	1100h to 2100h	Indobowl and Royz et Vous (37 & 39 Sultan Gate)
23 May	1430h to 1535h	NTUC FairPrice (301 Yishun Avenue 2)
23 May	1755h to 1830h	Changi City Point (5 Changi Business Park Central 1)
23 May	1955h to 2030h	NEX (23 Serangoon Central) <ul style="list-style-type: none"> • FairPrice Xtra
24 May	0600h to 1500h	The Woodgrove (30 Woodlands Avenue 1) <ul style="list-style-type: none"> • McDonald's
24 May	0600h to 1900h	Food Hub (455 Sengkang West Avenue)
24 May	1000h to 2200h	Hougang Green Shopping Mall (21 Hougang Street 51) <ul style="list-style-type: none"> • Fu Fa Food Court
24 May	1230h to 1300h	D'FoodStop@ABC (2 Jalan Bukit Merah)
24 May	1235h to 1310h	NTUC FairPrice (30 Bendemeer Road)
24 May	1535h to 1640h	Funan (107 North Bridge Road) <ul style="list-style-type: none"> • Popsical
24 May	2025h to 2100h	Causeway Point (1 Woodlands Square)
25 May	0600h to 1900h	Food Hub (455 Sengkang West Avenue)
25 May	0920h to 1000h	Sheng Siong Supermarket (108 McNair Road)
25 May	1000h to 2200h	Hougang Green Shopping Mall (21 Hougang Street 51) <ul style="list-style-type: none"> • Fu Fa Food Court

Date	Time	Location (Address)
25 May	1230h to 1430h	Beauty World Centre (144 Upper Bukit Timah Road) <ul style="list-style-type: none"> Beauty World Thai Massage
25 May	1500h to 1550h	Tradehub 21 (18 Boon Lay Way) <ul style="list-style-type: none"> Rodalink Jurong East Bicycle Megastore
25 May	1535h to 1630h	Sheng Siong Supermarket (455 Sengkang West Avenue)
26 May	0900h to 1700h	Sri Murugan Trading Pte Ltd (308 Anchorvale Road)
26 May	0900h to 2100h	NTUC Foodfare (308 Anchorvale Road)
26 May	0905h to 1200h	McDonald's (293 Yishun Street 22)
26 May	1000h to 2200h	Hougang Green Shopping Mall (21 Hougang Street 51) <ul style="list-style-type: none"> Fu Fa Food Court
26 May	1130h to 2100h	Tiong Bahru Plaza (298 Tiong Bahru Road) <ul style="list-style-type: none"> 328 Katong Laksa
26 May	1355h to 1700h	VivoCity (1 HarbourFront Walk)
26 May	1400h to 1430h	New Trendy Salon LLP (84 Redhill Lane)
26 May	1430h to 1500h	One Commonwealth (1 Commonwealth Lane) <ul style="list-style-type: none"> Passion Bike
26 May	1430h to 1535h	NTUC FairPrice (301 Yishun Avenue 2)
26 May	1630h to 1700h	Yuhua Village Market and Food Centre (254 Jurong East Street 24)
26 May	1710h to 1740h	Giant (256 Bangkit Road)
26 May	1850h to 2025h	Decathlon – Singapore Lab (230 Stadium Boulevard)
26 May	2100h to 2130h	Wenxintang Spa (316B Ang Mo Kio Street 31)
26 May	2115h to 2220h	People's Park Centre (101 Upper Cross Street)
27 to 31 May	0000h to 2359h	Tuas Amenity Centre (71 Pioneer Road)
27 May	0600h to 2100h	NTUC Foodfare (308 Anchorvale Road)
27 May	0630h to 2200h	Hougang Green Shopping Mall (21 Hougang Street 51) <ul style="list-style-type: none"> Fu Fa Food Court
27 May	0750h to 0820h	Sheng Siong Supermarket (417 Fernvale Link)
27 May	0905h to 1030h	Bukit Merah Community Centre (4000 Jalan Bukit Merah)
27 May	0915h to 1400h	LeVel 33 (8 Marina Boulevard)
27 May	0600h to 1900h	Food Hub (455 Seng Kang West Avenue)
27 May	1100h to 2230h	Chop Joo Hiong Eating House (237 Serangoon Avenue 3)
27 May	1125h to 2035h	Tiong Bahru Plaza (298 Tiong Bahru Road) <ul style="list-style-type: none"> 328 Katong Laksa
27 May	1605h to 1805h	Health Management Centre (809 French Road)

Date	Time	Location (Address)
27 May	1630h to 1700h	Yuhua Village Market and Food Centre (254 Jurong East Street 24)
27 May	1700h to 1730h	Sheng Siong Supermarket (200 Woodlands Industrial Park E7)
27 May	1725h to 1825h	GP Motoring (282 Macpherson Road)
27 May	2230h to 2300h	Atatzcutz Singapore (348 Bedok Road)
28 May	0600h to 2100h	NTUC Foodfare (308 Anchorvale Road)
28 May	0630h to 2200h	Hougang Green Shopping Mall (21 Hougang Street 51) <ul style="list-style-type: none"> Fu Fa Food Court
28 May	1010h to 1155h	Carole Unisex Salon (620 Hougang Avenue 8)
28 May	1100h to 2200h	Hougang Green Shopping Mall (21 Hougang Street 51) <ul style="list-style-type: none"> Pizza Hut
28 May	1300h to 1340h	Masjid Jamek Queenstown (946 Margaret Drive)
28 May	1615h to 1650h	Sheng Siong Supermarket (455 Sengkang West Avenue)
28 May	1955h to 2055h	Seletar Mall (33 Sengkang West Avenue) <ul style="list-style-type: none"> NTUC FairPrice
28 May	1955h to 2105h	The Seletar Mall (33 Sengkang West Avenue)
29 May	0110h to 0530h	Marina Bay Sands Casino (10 Bayfront Avenue)
29 May	0600h to 1300h	NTUC Foodfare (308 Anchorvale Road)
29 May	0630h to 1300h	Hougang Green Shopping Mall (21 Hougang Street 51) <ul style="list-style-type: none"> Fu Fa Food Court
29 May	1020h to 1100h	The Seletar Mall (33 Sengkang West Avenue)
29 May	1255h to 2225h	NTUC Foodfare (476D Upper Serangoon View)
29 May	1315h to 1500h	Chien Chi Tow Healthcare (78 Redhill Lane)
29 May	1555h to 1645h	Peninsula Plaza Singapore (111 North Bridge Road)
29 May	1820h to 2000h	VivoCity (1 HarbourFront Walk) <ul style="list-style-type: none"> FairPrice Xtra
29 May	1840h to 1950h	ESR BizPark@Chai Chee (750A Chai Chee Road) <ul style="list-style-type: none"> Decathlon
29 May	2030h to 2115h	Plaza Singapura (68 Orchard Road)
29 May	2030h to 2055h	Plaza Singapura (68 Orchard Road) <ul style="list-style-type: none"> Cold Storage
30 May	0940h to 1630h	NTUC Foodfare (476D Upper Serangoon View)
30 May	1100h to 2200h	Hougang Green Shopping Mall (21 Hougang Street 51) <ul style="list-style-type: none"> Pizza Hut
30 May	1200h to 1300h	Bugis Street (3 New Bugis Street)

Date	Time	Location (Address)
30 May	1800h to 1900h	Hong Yang Health Products & Foot Reflexology Centre (38 Beo Crescent)
30 to 31 May	2005h to 0005h	Marina Bay Sands Casino (10 Bayfront Avenue)

Note: Public places marked with (*) were visited by cases linked to the Tan Tock Seng Hospital cluster during their likely infectious period.

Those who had been identified as close contacts of confirmed cases would already have been notified by MOH.

As a precautionary measure, persons who had been at these locations during the specified timings should monitor their health closely for 14 days from their date of visit. They should see a doctor promptly if they develop symptoms of acute respiratory infection (such as cough, sore throat and runny nose), as well as fever and loss of taste or smell, and inform the doctor of their exposure history.

Individuals may access the SafeEntry Location Matching Self-Check service via the TraceTogether App or at <https://weryouthere.safeentry.gov.sg> to check whether they were at these locations during the specified timings, based on their own SafeEntry records.

There is no need to avoid places where confirmed cases of COVID-19 have been. The National Environment Agency will engage the management of affected premises to provide guidance on cleaning and disinfection.