

**15 March 2021 Daily Report on COVID-19****(1) Number of COVID-19 Cases****Figure 1.1:** Breakdown of New Confirmed Cases in the Past 14 Days

Press Release Date	Imported			Non-Imported Cases													All Cases		
	Isolated before Detection	Detected through Surveillance <sup>2</sup>	Sub-Total	Community Cases								Dorm Residents <sup>1</sup>							
				Isolated before Detection <sup>3</sup>				Detected through Surveillance <sup>4</sup>				Sub-Total	Incidence Rate <sup>5</sup> (per 100,000)	Isolated before Detection <sup>3</sup>	Detected through Surveillance <sup>4</sup>	No. of Cases		Incidence Rate <sup>5</sup> (per 100,000)	
				SC/PR	G or F	Visitor	Sub-Total	SC/PR	G or F	Visitor	Sub-Total								
Before 2-Mar	2,803	310	3,113	384	271	2	657	1,014	643	10	1,667	2,324	-	54,511		54,511	-	59,948	
2-Mar	8	0	8	0	0	0	0	0	0	0	0	0	0	0	0	0	0	0	8
3-Mar	21	0	21	0	0	0	0	2	0	0	2	2	0.037	0	0	0	0	0	23
4-Mar	18	0	18	1	0	0	1	0	0	0	0	1	0.019	0	0	0	0	19	
5-Mar	9	0	9	0	0	0	0	0	0	0	0	0	0	0	0	0	0	9	
6-Mar	11	1	12	0	0	0	0	0	1	0	1	1	0.019	0	0	0	0	13	
7-Mar	13	0	13	0	0	0	0	0	0	0	0	0	0	0	0	0	0	13	
8-Mar	13	0	13	0	0	0	0	0	0	0	0	0	0	0	0	0	0	13	
9-Mar	6	0	6	0	0	0	0	0	0	0	0	0	0	0	0	0	0	6	
10-Mar	10	0	10	0	0	0	0	0	0	0	0	0	0	0	0	0	0	10	
11-Mar	7	0	7	0	0	0	0	0	1	0	1	1	0.019	0	0	0	0	8	
12-Mar	9	0	9	0	0	0	0	0	1	0	1	1	0.019	0	0	0	0	10	
13-Mar	8	0	8	0	0	0	0	0	0	0	0	0	0	0	0	0	0	8	
14-Mar	17	0	17	0	0	0	0	0	0	0	0	0	0	0	0	0	0	17	
15-Mar	12	0	12	0	0	0	0	0	0	0	0	0	0	0	0	0	0	12	
Total since start of outbreak	2,965	311	3,276	385	271	2	658	1,016	646	10	1,672	2,330	-	54,511		54,511	-	60,117	
Population at risk												5,381,000				323,000		5,704,000	
Prevalence												0.04%				16.88%		1.05%	

**Notes**

<sup>1</sup> Includes PRs and visitors residing in dorms. Breakdown of dorm cases into those detected through surveillance and those isolated before detection is not available before 24 Aug.

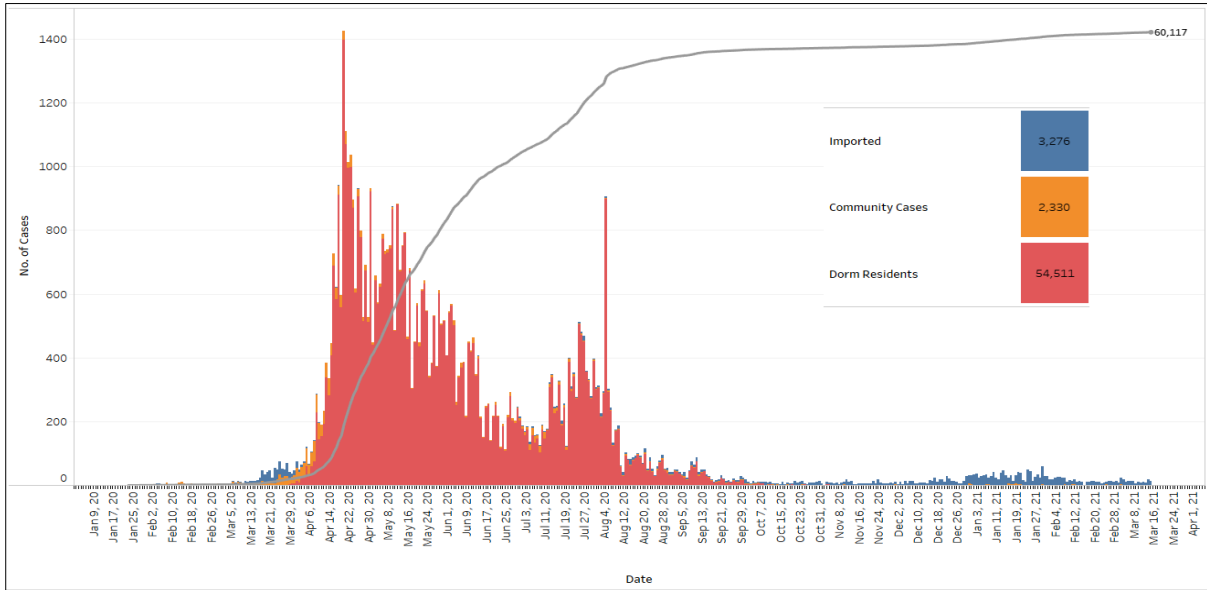
<sup>2</sup> 272 cases were reported before early Apr, and constitute the 1<sup>st</sup> wave of imported cases.

<sup>3</sup> Cases who were already quarantined and tested during quarantine to determine their status.

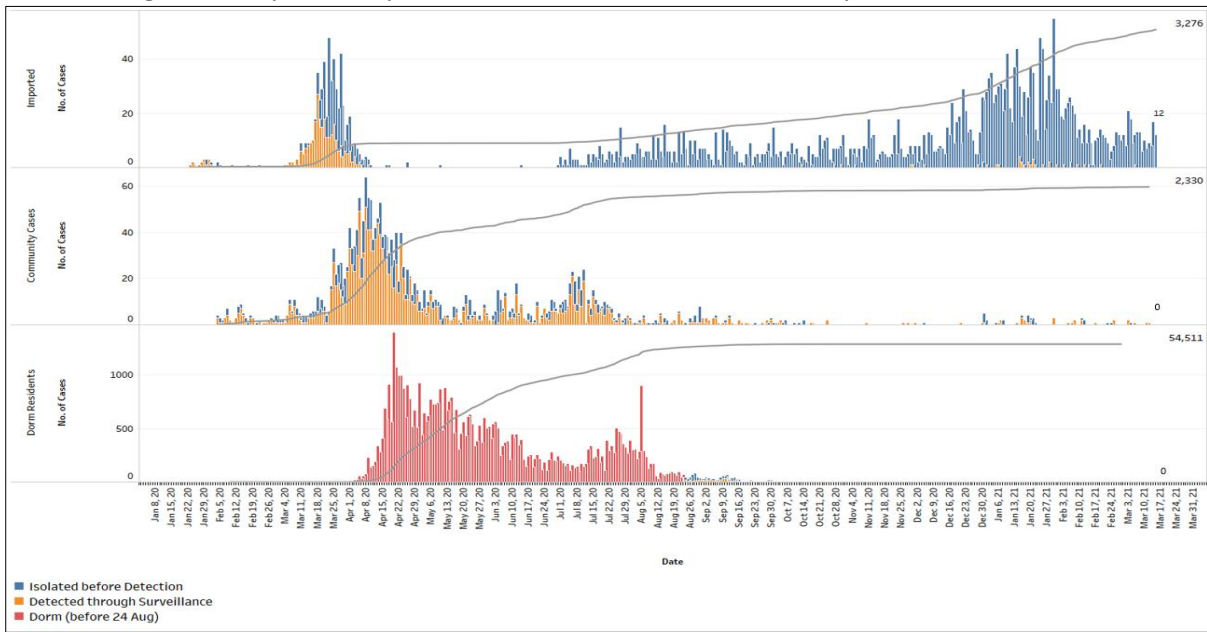
<sup>4</sup> Cases who were identified through surveillance testing, such as the bi-weekly Rostered Routine Testing (RRT) of at-risk workers and testing of those with Acute Respiratory Illness (ARI) symptoms.

<sup>5</sup> Incidence rates are rounded to two significant figures.

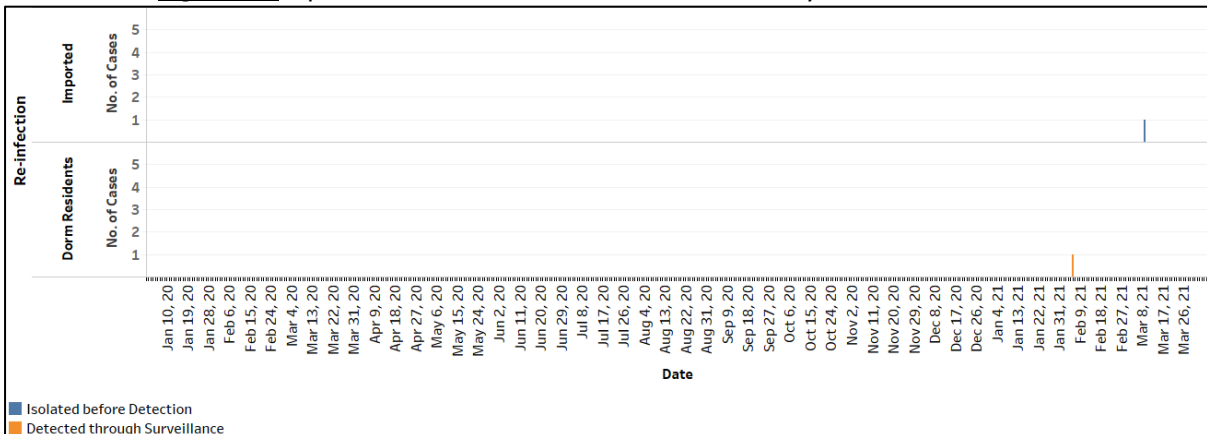
**Figure 1.2:** Epidemic Curve of the COVID-19 Outbreak by Press Release Date



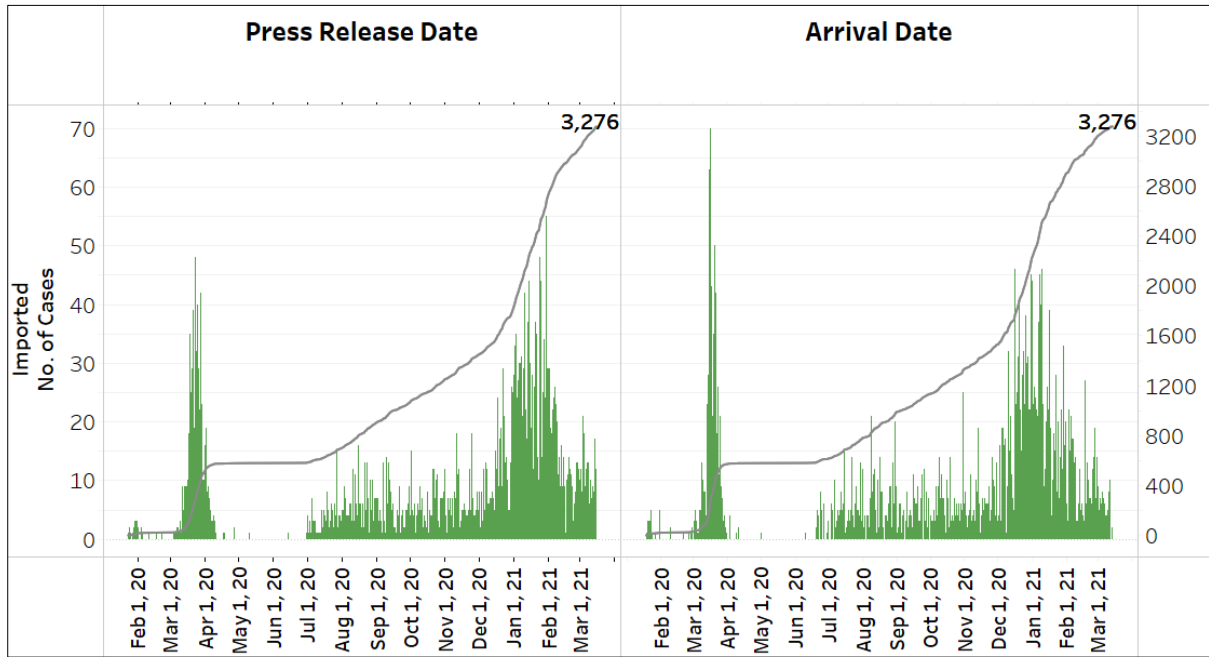
**Figure 1.3:** Epidemic Split Curve of the COVID-19 Outbreak by Press Release Date



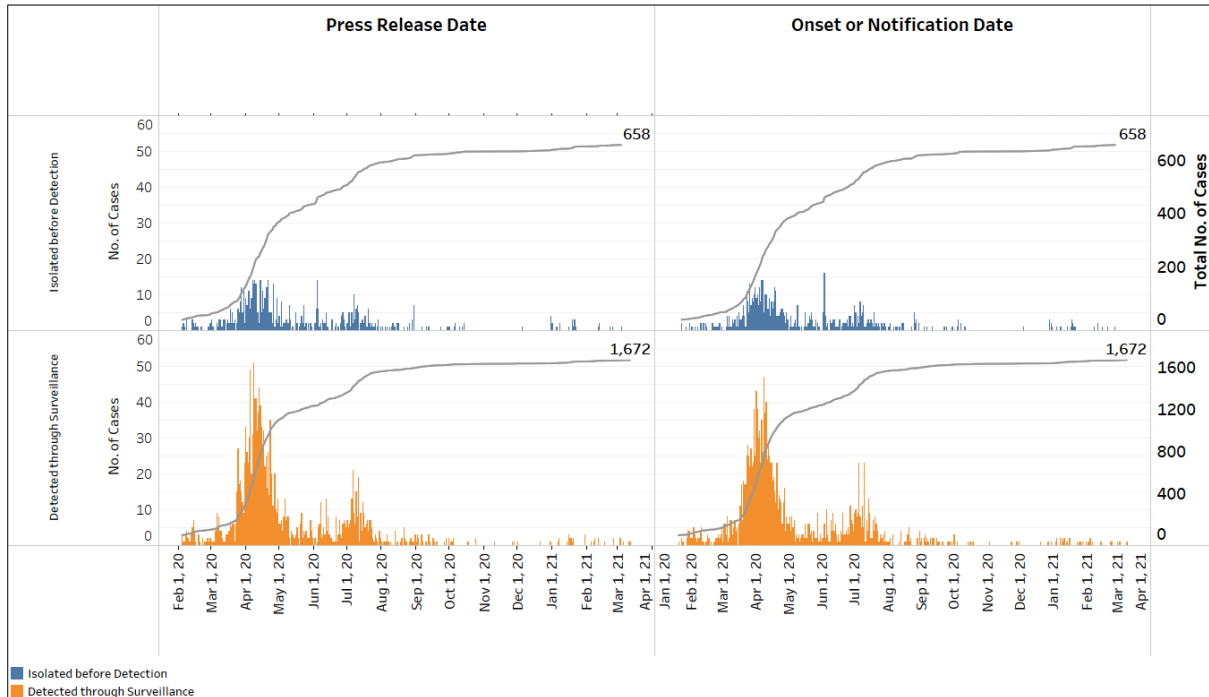
**Figure 1.4:** Epidemic Curve of COVID-19 Re-infection by Press Release Date



**Figure 1.5:** Epidemic Curve of Imported Cases by Press Release Date (left panel) and Arrival Date (right panel)

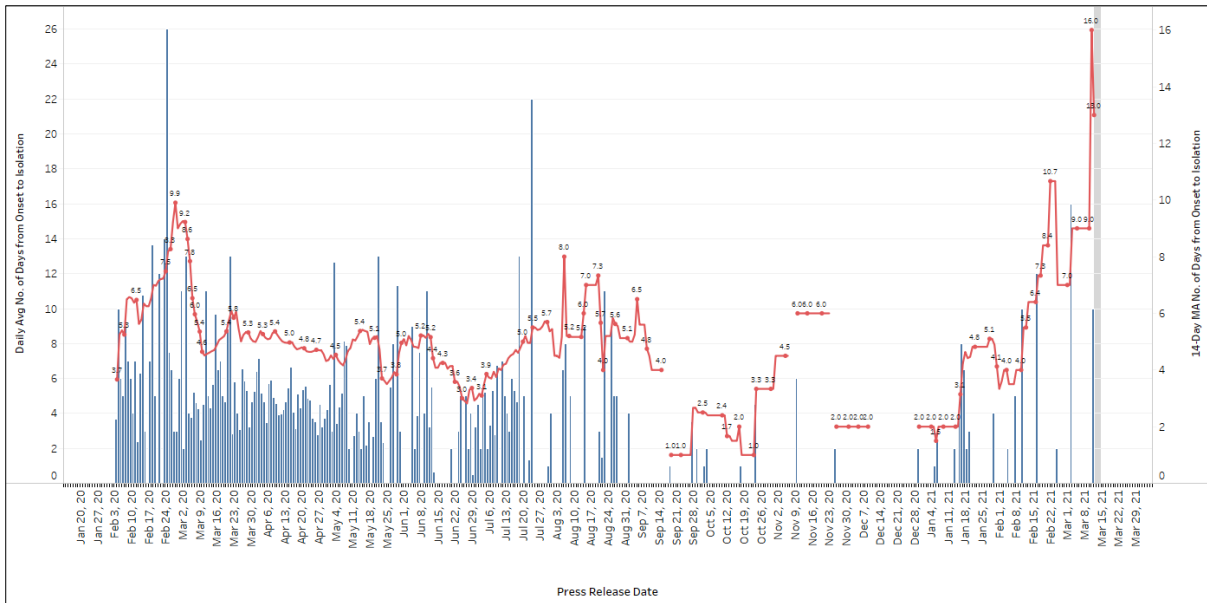


**Figure 1.6:** Epidemic Curve of Community Cases by Press Release Date (left panel) and by Symptom Onset or Notification Date<sup>6</sup> (right panel)



**Figure 1.7:** Average Number of Days from Onset of Symptoms to Isolation (QO, hospital admission or notification to MOH) for Community Cases Detected through Surveillance in Each Day

<sup>6</sup> Date of notification was used for cases that did not display any symptoms. The numbers with onset in the past few days may see an increase as more cases are notified.



Line represents the 14-day moving average; Bar represents the daily average<sup>7</sup>

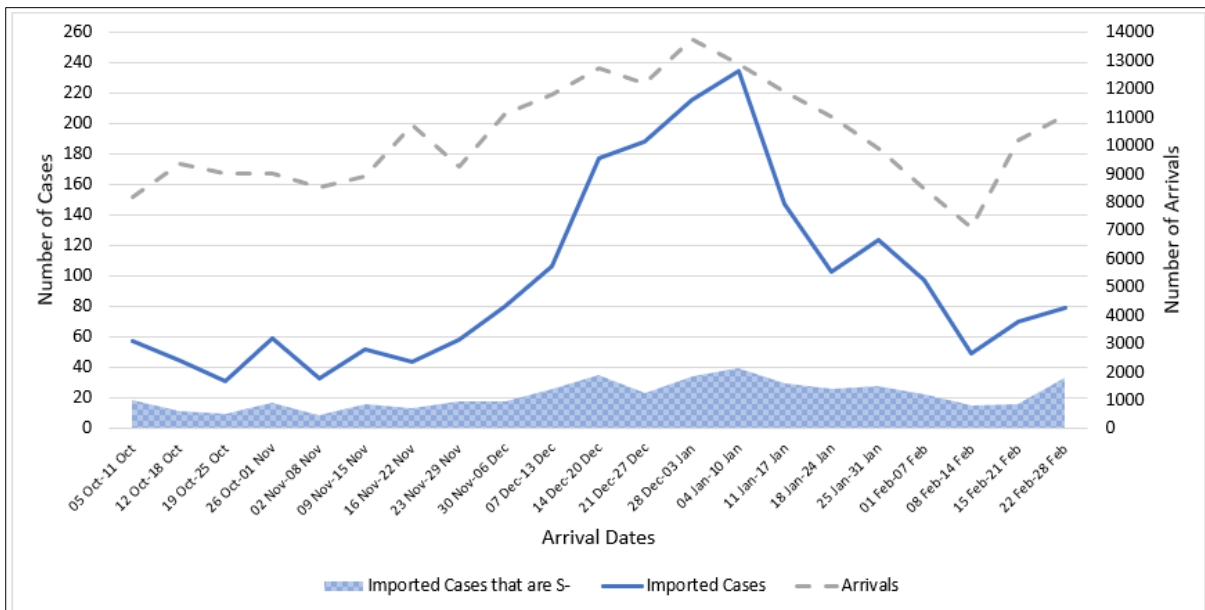
<sup>7</sup> Area in grey demarcates data points for the past 3 days where some cases may still be pending epidemiological investigation. The bar graph shows the daily average number of days from symptoms onset to isolation, while the line graph shows the moving average for the past 14 days. Both graphs exclude cases with no onset date (asymptomatic) in the computation of the average. Community cases with symptoms who are isolated on the same day that symptoms occurred would have an isolation time of 0. There is a gap in the line graph from 16 to 18 Sep as there are no symptomatic cases in the preceding 14 days.

(2) Imported COVID-19 Cases

Figure 2.1: Serology and Symptom Status of Imported Cases Reported from 3 Mar to 9 Mar

Symptoms	S+	S-	Not Serology Tested	Pending Serology Result	Total No. of Cases
Asymptomatic	60	29	0	0	89
Symptomatic	2	3	0	0	5
<b>Total</b>	<b>62</b>	<b>32</b>	<b>0</b>	<b>0</b>	<b>94</b>

Figure 2.2: Weekly Total Number of Imported Cases, Imported Cases that are S- and Arrivals from 5 Oct 20 to 28 Feb 21<sup>8</sup>



<sup>8</sup> Data from the past 2 weeks are excluded as arrivals on SHN who arrived in the past 2 weeks may not have their SHN exit test results yet. "Imported Cases that are S-" comprises imported cases who are (a) serology negative; or (b) not tested for serology. "Imported Cases with Ct values 30 and below" have low Ct values which are suggestive of high viral load. Notwithstanding, Ct values should be interpreted with caution along with other epidemiological and clinical factors.

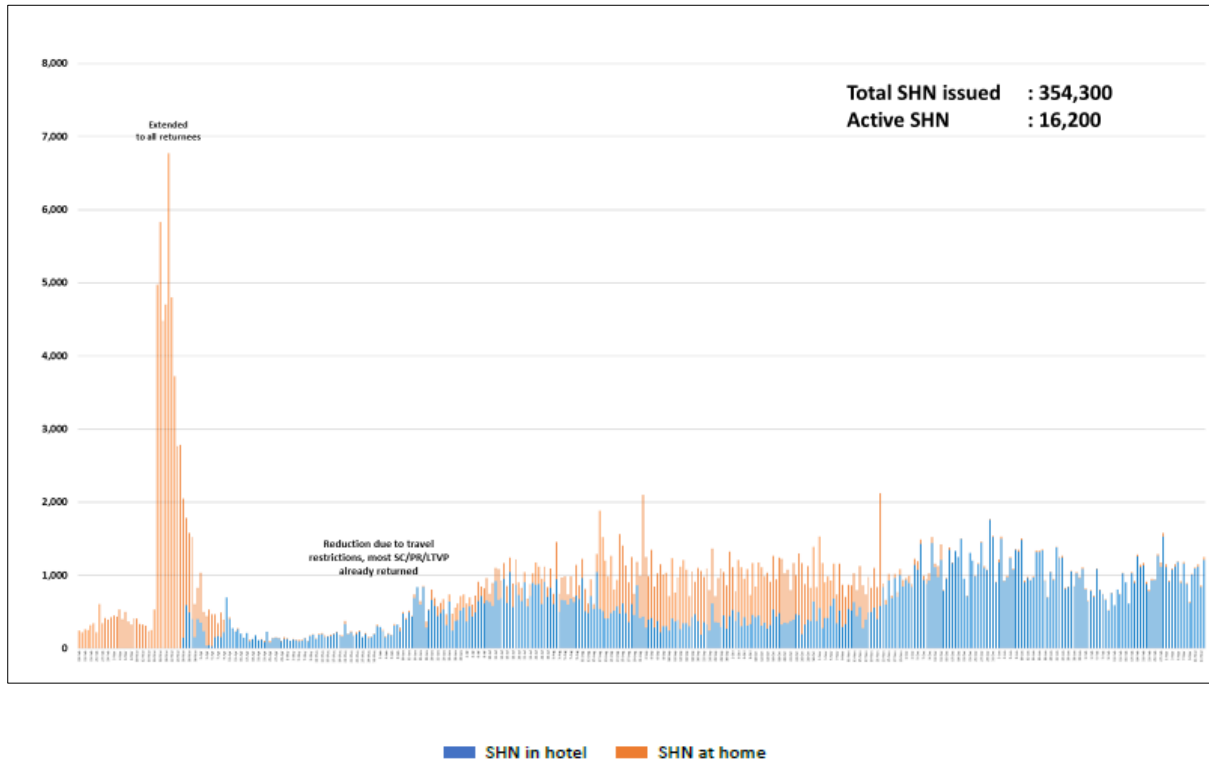
**(3) Number of COVID-19 Cases in Hospitals and Community Care Facilities****Figure 3.1:** Summary of Confirmed Cases by Status in the Past 14 Days

Press Release Date	Currently Admitted in Hospitals		In Care Facilities <sup>9</sup>	Total Recovered		Total Demised	Total
	ICU	General Wards		Completed Isolation	Discharged from Hospital		
2-Mar	1	18	66	56,708	3,134	29	59,956
3-Mar	1	17	83	56,714	3,135	29	59,979
4-Mar	1	23	88	56,721	3,136	29	59,998
5-Mar	1	16	91	56,731	3,139	29	60,007
6-Mar	1	21	90	56,737	3,142	29	60,020
7-Mar	1	23	86	56,746	3,148	29	60,033
8-Mar	1	20	96	56,750	3,150	29	60,046
9-Mar	1	20	97	56,754	3,151	29	60,052
10-Mar	1	24	97	56,760	3,151	29	60,062
11-Mar	1	20	81	56,785	3,154	29	60,070
12-Mar	1	20	80	56,793	3,157	29	60,080
13-Mar	0	17	80	56,804	3,157	30	60,088
14-Mar	0	17	90	56,807	3,161	30	60,105
15-Mar	0	20	93	56,812	3,162	30	60,117

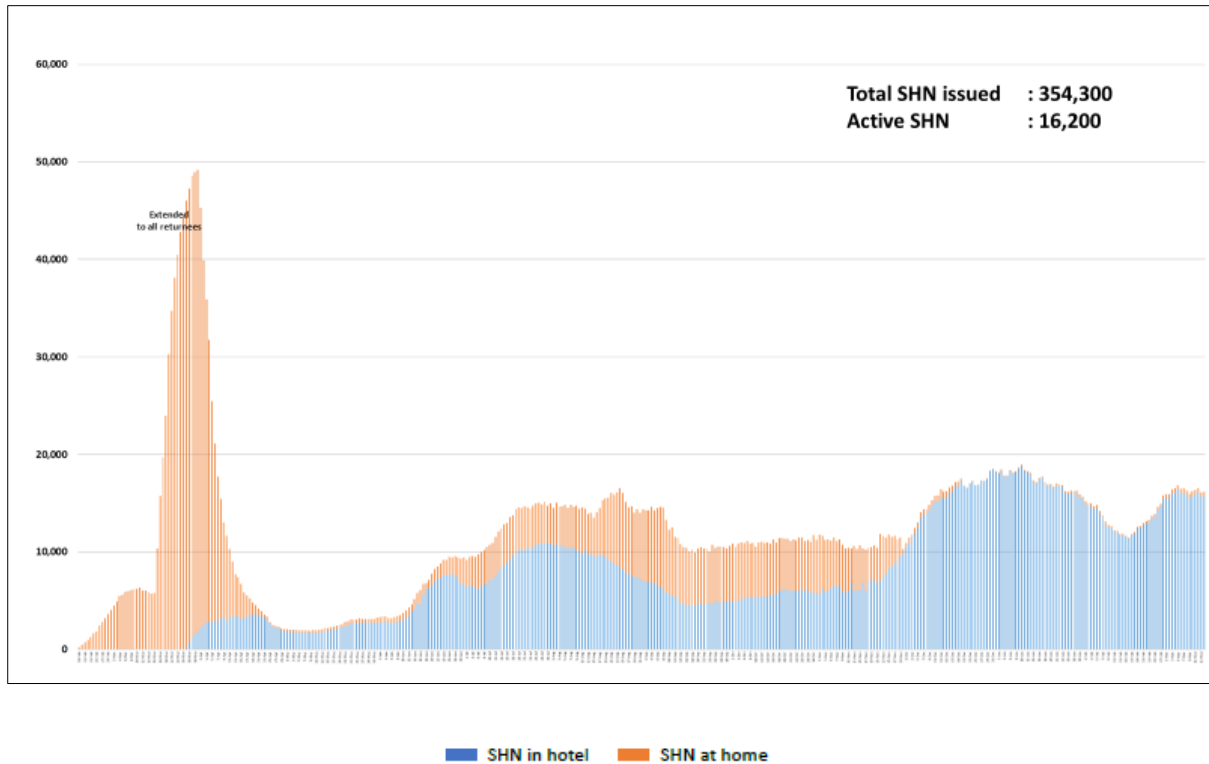
<sup>9</sup> Community Care Facilities (i.e. D'Resort, EXPO, Tuas South), Private Hospitals (i.e. Concord International Hospital, Mt Elizabeth Hospital, Gleneagles Hospital, Mt Elizabeth Novena Hospital, Parkway East Hospital), Community Hospitals (i.e. Bright Vision Hospital) and other care facilities.

#### (4) Number of Stay-Home-Notice (SHN) Issued

**Figure 4.1:** Daily Number of SHN issued (19 Feb 2020 to 14 Mar 2021)

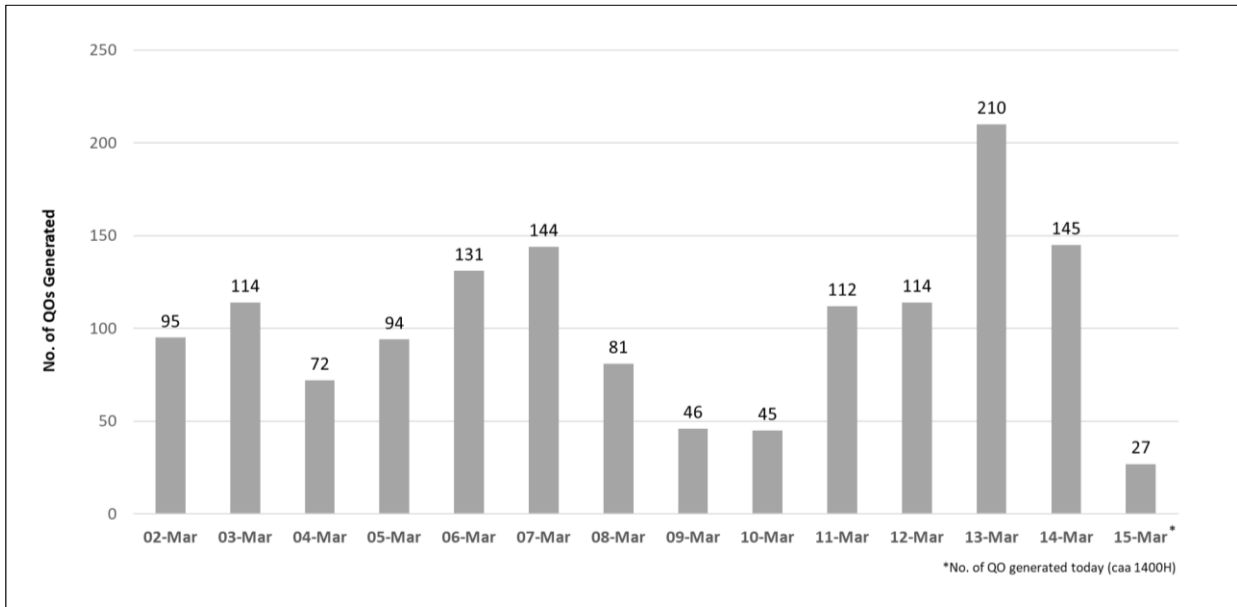


**Figure 4.2:** Active Stock Number of SHN (Home) and SHN (Hotel) (19 Feb 2020 to 14 Mar 2021)



**(5) Number of Quarantine Orders (QO) Issued**

**Figure 5.1:** Daily Number of QOs Issued



**Figure 5.2:** Active Number of Persons Under Quarantine (PUQs)

