

28 May 2021 Daily Report on COVID-19**(1) Number of COVID-19 Cases****Figure 1.1:** Breakdown of New Confirmed Cases in the Past 14 Days

Press Release Date	Imported			Non-Imported Cases														All Cases
	Isolated before Detection	Detected through Surveillance ²	Sub-Total	Community Cases								Dorm Residents ¹						
				Isolated before Detection ³				Detected through Surveillance ⁴				Sub-Total	Incidence Rate ⁵ (per 100,000)	Isolated before Detection ³	Detected through Surveillance ⁴	No. of Cases	Incidence Rate ⁵ (per 100,000)	
				SC/PR	G or F	Visitor	Sub-Total	SC/PR	G or F	Visitor	Sub-Total							
Before 15-May	4,159	325	4,484	450	301	4	755	1,074	664	10	1,748	2,503	-	54,518		54,518	-	61,505
15-May	12	0	12	11	0	0	11	5	3	0	8	19	0.35	0	0	0	0	31
16-May	11	0	11	11	2	0	13	15	10	0	25	38	0.71	0	0	0	0	49
17-May	7	0	7	4	2	0	6	13	2	0	15	21	0.39	0	0	0	0	28
18-May	11	0	11	9	5	0	14	10	3	0	13	27	0.50	0	0	0	0	38
19-May	4	0	4	23	5	0	28	4	2	0	6	34	0.63	0	0	0	0	38
20-May	14	0	14	12	3	0	15	9	3	0	12	27	0.50	0	0	0	0	41
21-May	10	0	10	13	4	0	17	9	4	0	13	30	0.56	0	0	0	0	40
22-May	7	0	7	10	2	0	12	4	6	0	10	22	0.41	0	0	0	0	29
23-May	3	0	3	9	3	0	12	4	5	0	9	21	0.39	0	1	1	0.31	25
24-May	12	0	12	8	4	0	12	8	4	0	12	24	0.45	0	0	0	0	36
25-May	8	1	9	7	1	0	8	6	4	0	10	18	0.33	0	3	3	0.93	30
26-May	2	0	2	9	4	0	13	8	2	0	10	23	0.43	1	0	1	0.31	26
27-May	8	1	9	12	0	0	12	2	0	0	2	14	0.26	0	1	1	0.31	24
28-May	15	0	15	6	2	0	8	6	1	0	7	15	0.28	0	0	0	0	30
Total since start of outbreak	4,283	327	4,610	594	338	4	936	1,177	713	10	1,900	2,836	-	54,524		54,524	-	61,970
Population at risk												5,381,000				323,000		5,704,000
Prevalence												0.05%				16.88%		1.09%

Notes

¹ Includes PRs and visitors residing in dorms. Breakdown of dorm cases into those detected through surveillance and those isolated before detection is not available before 24 Aug.

² 272 cases were reported before early Apr, and constitute the 1st wave of imported cases.

³ Cases who were already quarantined and tested during quarantine to determine their status.

⁴ Cases who were identified through surveillance testing, such as the bi-weekly Rostered Routine Testing (RRT) of at-risk workers and testing of those with Acute Respiratory Illness (ARI) symptoms.

⁵ Incidence rates are rounded to two significant figures.

Figure 1.2: Epidemic Curve of the COVID-19 Outbreak by Press Release Date

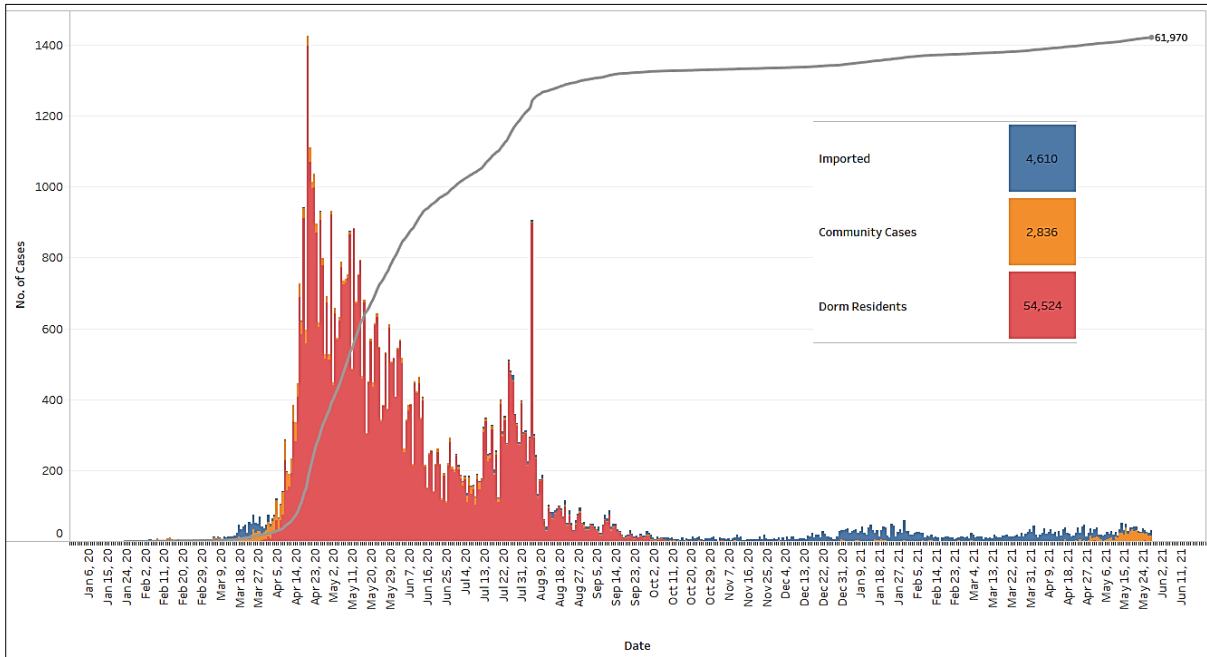


Figure 1.3: Epidemic Split Curve of the COVID-19 Outbreak by Press Release Date

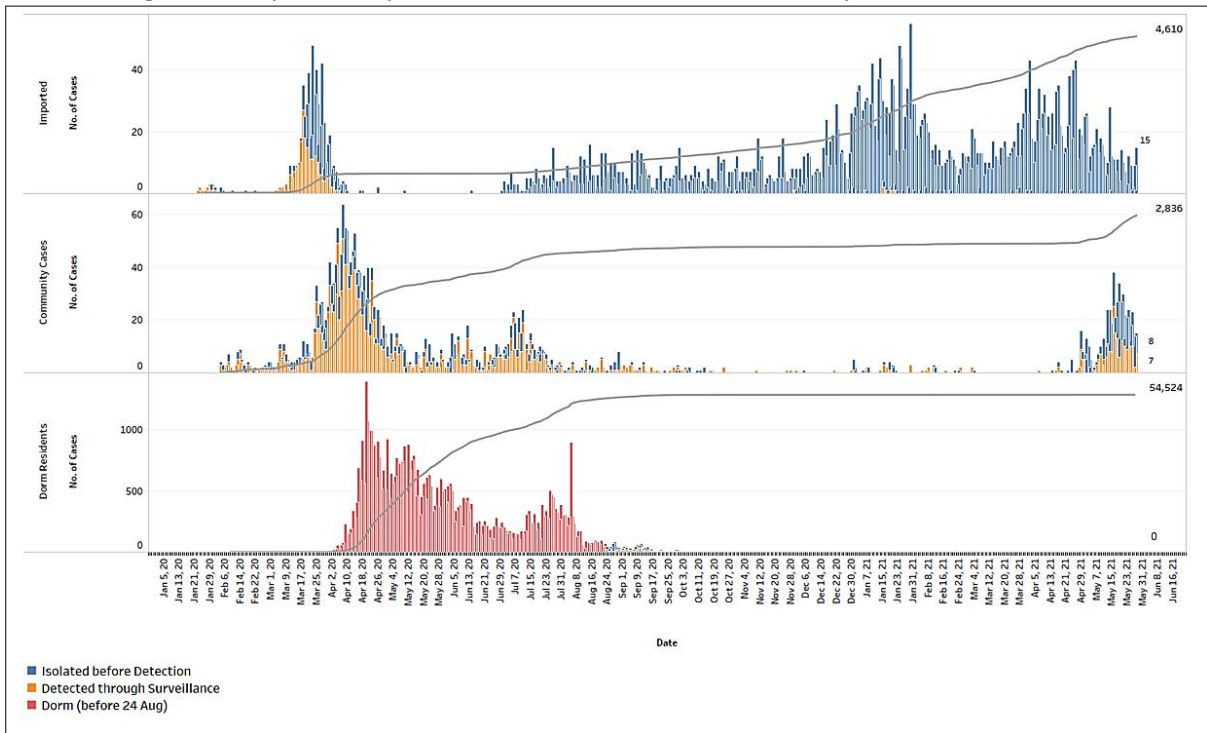


Figure 1.4: Epidemic Curve of COVID-19 Re-infections by Press Release Date

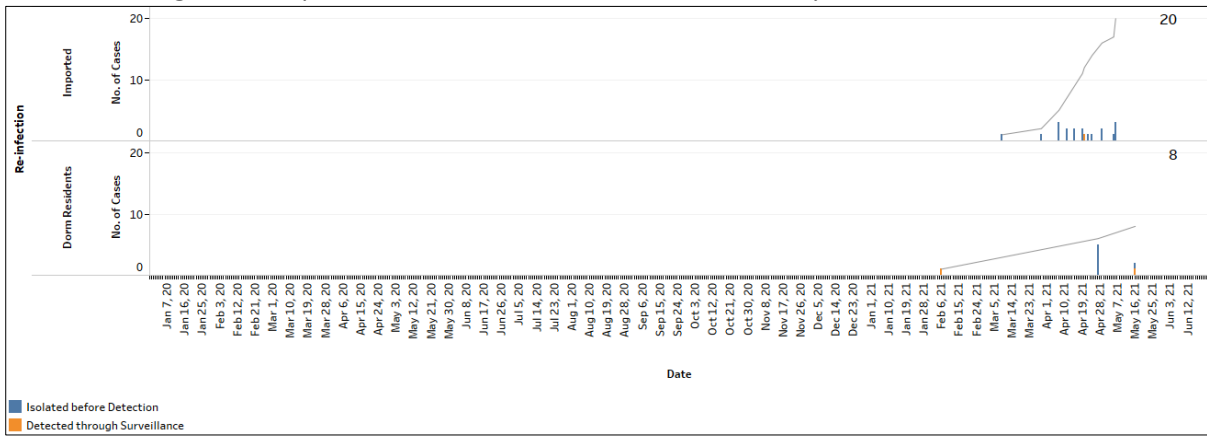


Figure 1.5: Epidemic Curve of Imported Cases by Press Release Date (left panel) and Arrival Date (right panel)

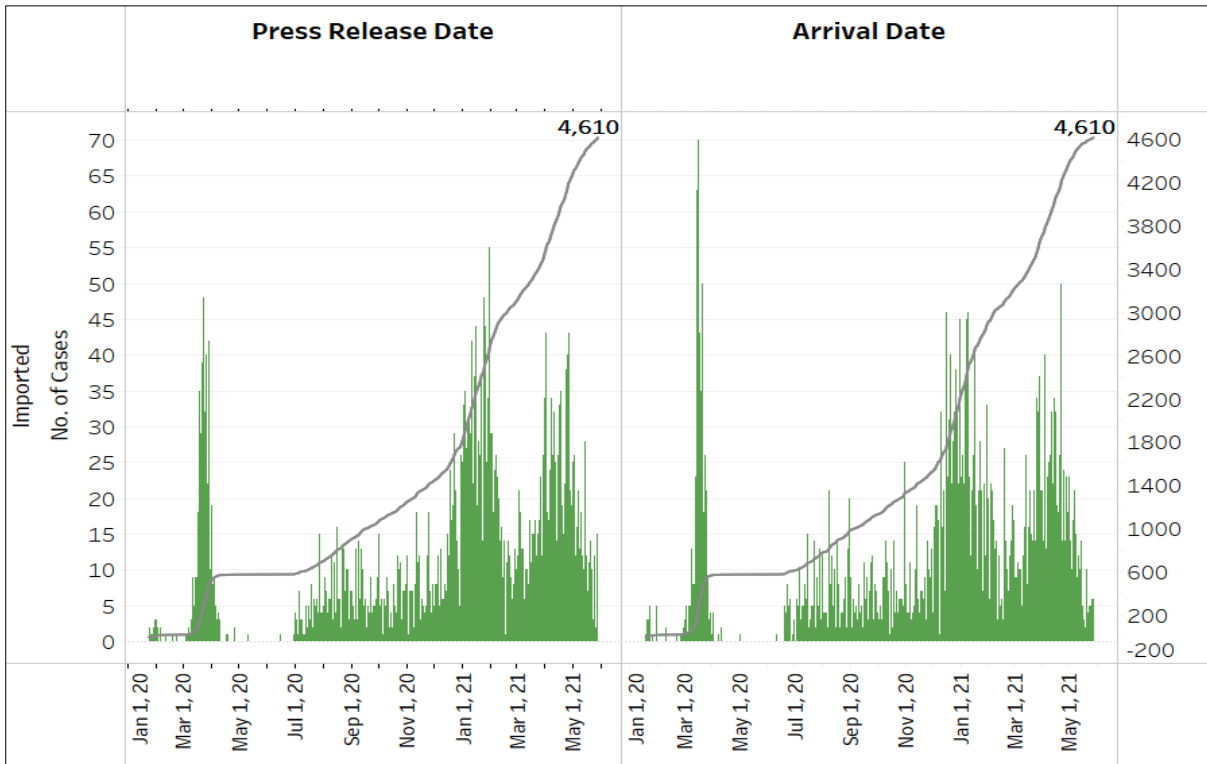


Figure 1.6: Epidemic Curve of Community Cases by Press Release Date (left panel) and by Symptom Onset or Notification Date⁶ (right panel)

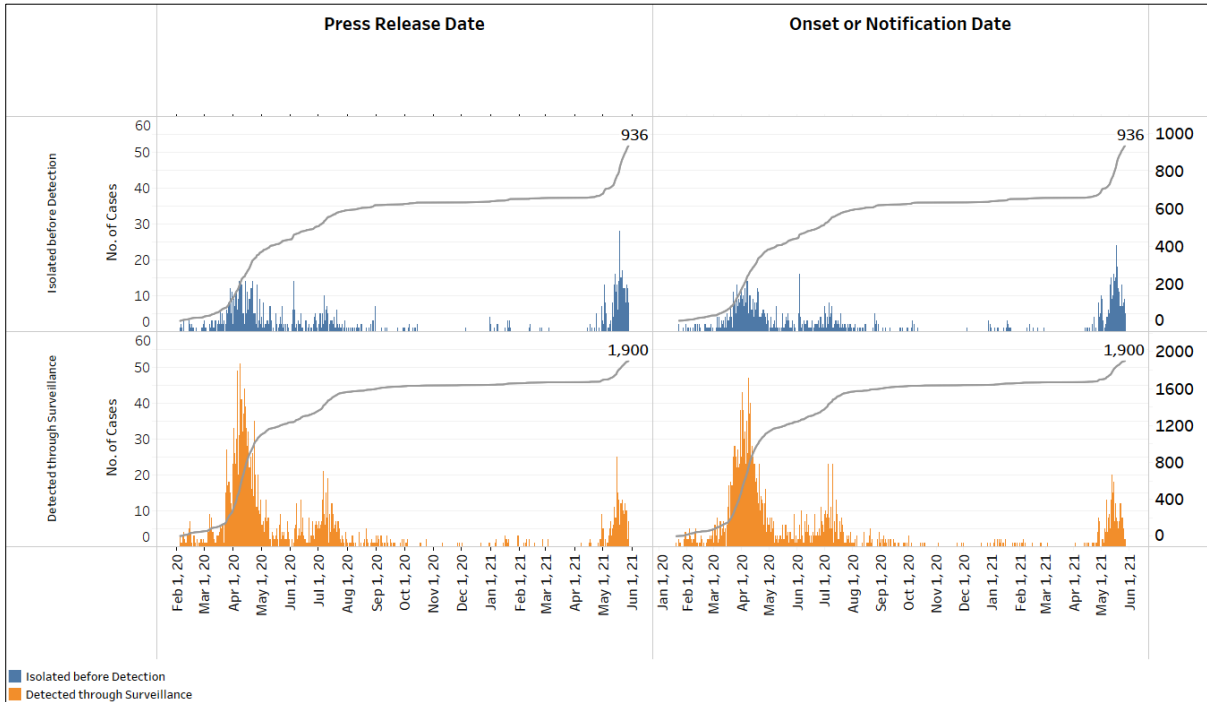
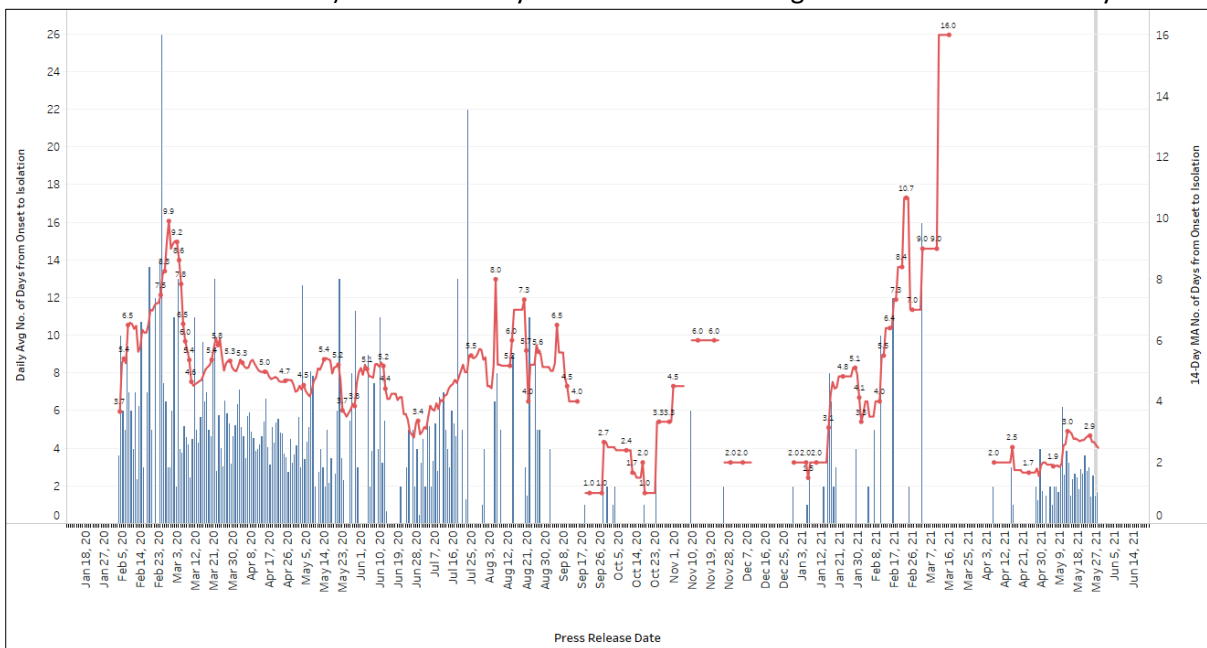


Figure 1.7: Average Number of Days from Onset of Symptoms to Isolation (QO, hospital admission or notification to MOH) for Community Cases Detected through Surveillance in Each Day



Line represents the 14-day moving average; Bar represents the daily average⁷

⁶ Date of notification was used for cases that did not display any symptoms. The numbers with onset in the past few days may see an increase as more cases are notified.

⁷ Area in grey demarcates data points for the past 3 days where some cases may still be pending epidemiological investigation. The bar graph shows the daily average number of days from symptoms onset to isolation, while the line graph shows the moving average for the past 14 days. Both graphs exclude cases with no onset date (asymptomatic) in the computation of the average. Community cases with symptoms who are isolated on the same day that symptoms occurred would have an isolation time of 0. There is a gap in the line graph from 16 to 18 Sep as there are no symptomatic cases in the preceding 14 days.

Figure 1.8: Weekly Reclassifications of Previously Reported Cases (*next update will be on 31 May*)

	Imported	Community Linked	Community Unlinked	Dorm Residents	Total
Total number of cases as at 17 May	4,507	1,733	855	54,518	61,613
Cases reported 18 May - 24 May	61	145	40	1	247
Net reclassifications of previously reported cases, incorporated 18 May - 24 May	6	23	-29	0	0
Total number of cases as at 24 May	4,574	1,901	866	54,519	61,860

Case Number	PR date	Occupation	Link Reclassification	Rationale for Link Reclassification
61508	3 Apr 21	Foreign Domestic Worker	Community Unlinked → Imported (Myanmar) - Overseas infection	Case has recent travel history to Myanmar. She is likely an intermittent shedder previously infected overseas.
61822	11 Apr 21	Stevedore	Dorm Unlinked → Dorm Linked (Vessel)	Case is linked to the vessel which he worked on in the D-14 period.
61988	16 Apr 21	Caregiver	Community Unlinked → Imported (Indonesia) - Overseas infection	Case has recent travel history to Indonesia. He is likely an intermittent shedder previously infected overseas.
61993	16 Apr 21	Senior Research Fellow	Community Unlinked → Community Linked (Case 61863)	Case is phylogenetically linked to Case 61863, an imported case who stayed at the same quarantine facility as the case.
62113	18 Apr 21	Cargo Officer	Community Unlinked → Community Linked (Vessel)	Case is linked to the vessel which he worked on in the D-14 period.
62200	21 Apr 21	Senior system engineer	Community Unlinked → Imported (India) - Overseas infection	Case has recent travel history to India. He is likely an intermittent shedder previously infected overseas.
62285	23 Apr 21	Vessel Crew	Community Unlinked → Imported (Indonesia) - Overseas infection	Case has recent travel history to Indonesia. He is likely an intermittent shedder previously infected overseas.

Case Number	PR date	Occupation	Link Reclassification	Rationale for Link Reclassification
62294	23 Apr 21	Foreign Military Mechanic	Community Unlinked → Imported (Indonesia) - Overseas infection	Case has recent travel history to Indonesia. He is likely an intermittent shedder previously infected overseas.
62553	29 Apr 21	Cleaner	Community Unlinked → Community Linked (Case 62064 and Tuas CCF cluster)	Case is the index of the cluster linked to his workplace, Tuas CCF. His phylogenetic results are similar to Case 62064, who stayed at Tuas CCF.
62627	30 Apr 21	Undergraduate	Community Unlinked → Imported (India) - Overseas infection	Case has recent travel history to India. He is likely an intermittent shedder previously infected overseas.
62933	7 May 21	Cleaner	Community Unlinked → Community Linked (Case 62830 and Cluster 62933)	Case is the index of the cluster linked to his workplace, Park Avenue Rochester. His phylogenetic results are similar to Case 62830, who stayed at the hotel.
63037	9 May 21	Kitchen Assistant	Community Unlinked → Community Linked (Cluster 62933)	Case lives in the same block as 62933. Both cases are phylogenetically linked.
63096	12 May 21	Nurse	Community Unlinked → Community Linked (Cluster 62873)	Case is phylogenetically linked to Cluster 62873, whose index case is a cleaner at Changi Airport Terminal 3.
63120	13 May 21	Housewife	Community Unlinked → Community Linked (Cluster 62873)	Case is phylogenetically linked to Cluster 62873, whose index case is a cleaner at Changi Airport Terminal 3.
63273	16 May 21	Factory Worker	Community Unlinked → Community Linked (Cluster 62933)	Case is the previously unlinked index of SMS IMFOCOMM cluster (7 cases). Case visited JEM/Westgate in the period between 6 May and their symptom onset date. Part of 62933's phylogenetic cluster.
63275	16 May 21	Auxiliary Police	Community Unlinked → Community Linked (Cluster 62933)	Case worked at Westgate in the period between 6 May and their symptom onset date. Part of 62933's phylogenetic cluster.

Case Number	PR date	Occupation	Link Reclassification	Rationale for Link Reclassification
63276	16 May 21	Accountant	Community Unlinked → Community Linked (Cluster 62933)	Case visited JEM/Westgate in the period between 6 May and their symptom onset date. Part of 62933's phylogenetic cluster. 63406 is linked to case.
63277	16 May 21	Polytechnic Student	Community Unlinked → Community Linked (Cluster 62933)	Case worked at Westgate in the period between 6 May and their symptom onset date. Part of 62933's phylogenetic cluster
63304	16 May 21	Sales Representative	Community Unlinked → Community Linked (Cluster 62933)	Previously unlinked index of cluster 63304 (3 cases). Case visited JEM/Westgate in the period between 6 May and their symptom onset date. Part of 62933's phylogenetic cluster.
63306	16 May 21	Restaurant Owner	Community Unlinked → Community Linked (Cluster 62933)	Case visited JEM/Westgate in the period between 6 May and their symptom onset date. Part of 62933's phylogenetic cluster.
63347	17 May 21	Office Cleaner	Community Unlinked → Community Linked to Cluster 62873	Case was likely infected by husband(63459) who works in Terminal 3 as an Aviation Security Officer.
63357	17 May 21	IT Engineer	Community Unlinked → Community Linked (Cluster 62933)	Previously unlinked index of cluster 63357 (16 cases). Case visited JEM/Westgate in the period between 6 May and their symptom onset date. Part of 62933's phylogenetic cluster.
63382	18 May 21	Retiree	Community Unlinked → Community Linked to Cluster 62873	Case was likely infected by housemate(63458) who works as a lounge attendant in Terminal 3 Ambassador Transit Lounge.
63412	18 May 21	General Worker	Community Unlinked → Community Linked to Cluster 63271	Case works at at Jin Tai Tong Food Industries Pte. Ltd.
63417	18 May 21	Bank Analyst	Community Unlinked → Community Linked (Cluster 62933)	Case visited JEM/Westgate in the period between 6 May and their symptom onset date. 63508 was linked to him.

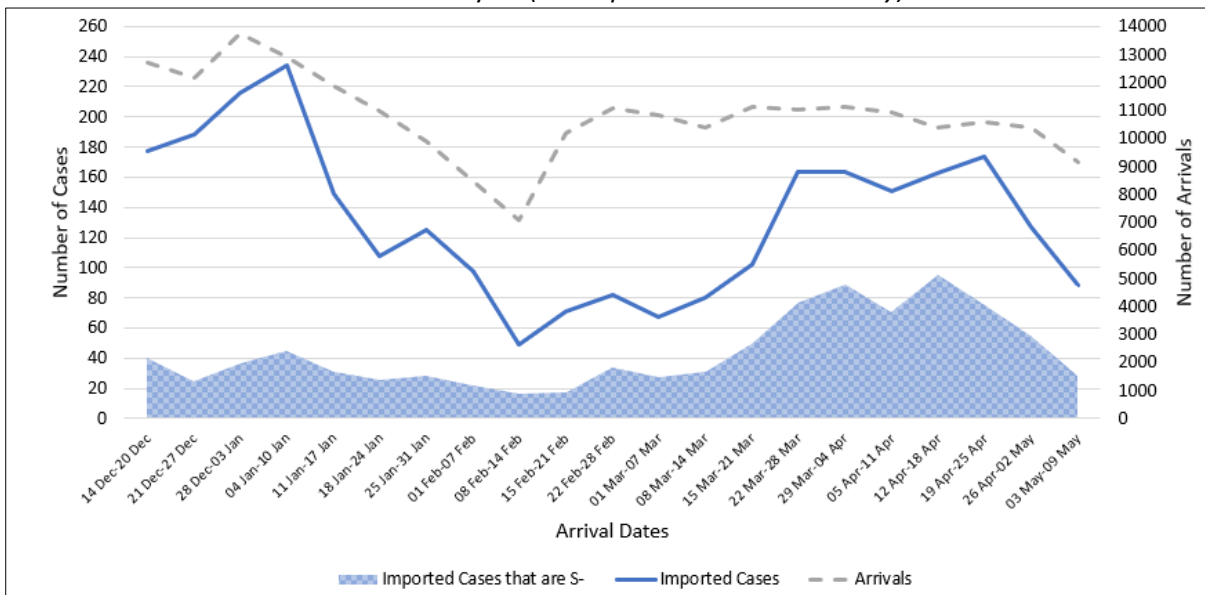
Case Number	PR date	Occupation	Link Reclassification	Rationale for Link Reclassification
63453	20 May 21	Safe Distancing Ambassador	Community Unlinked → Community Linked (Cluster 62933)	Case worked at Westgate in the period between 6 May and their symptom onset date.
63510	21 May 21	Salesperson	Community Unlinked → Community Linked (Cluster 62933)	Case worked at Westgate in the period between 6 May and their symptom onset date.
63588	22 May 21	Network Engineer	Community Unlinked → Community Linked (Cluster 62933)	Case visited JEM/Westgate in the period between 6 May and their symptom onset date.
63591	22 May 21	Warehouse Manager	Community Unlinked → Community Linked (Cluster 62933)	Case visited JEM/Westgate in the period between 6 May and their symptom onset date.
63593	22 May 21	Kitchen Assistant	Community Unlinked → Community Linked (Cluster 62933)	Case worked at JEM/Westgate in the period between 6 May and their symptom onset date.

(2) Imported COVID-19 Cases

Figure 2.1: Serology and Symptom Status of Imported Cases Reported from 15 May to 21 May

Symptoms	S+	S-	Not Serology Tested	Pending Serology Result	Total No. of Cases
Asymptomatic	57	8	0	1	66
Symptomatic	1	2	0	0	3
Total	58	10	0	1	69

Figure 2.2: Weekly Total Number of Imported Cases, Imported Cases that are S- and Arrivals from 14 Dec 20 to 9 May 21 (next update will be on 31 May)⁸



⁸ Data from the past 2 weeks are excluded as arrivals on SHN who arrived in the past 2 weeks may not have their SHN exit test results yet. "Imported Cases that are S-" comprises imported cases who are (a) serology negative; or (b) not tested for serology. "Imported Cases with Ct values 30 and below" have low Ct values which are suggestive of high viral load. Notwithstanding, Ct values should be interpreted with caution along with other epidemiological and clinical factors.

(3) Number of COVID-19 Cases in Hospitals and Community Care Facilities**Figure 3.1:** Summary of Confirmed Cases by Status in the Past 14 Days

Press Release Date	Currently Admitted in Hospitals		In Care Facilities ⁹	Total Recovered		Total Demised	Total
	ICU	General Wards		Completed Isolation	Discharged from Hospital		
15-May	3	187	253	57,708	3,354	31	61,536
16-May	2	205	243	57,741	3,363	31	61,585
17-May	3	210	246	57,754	3,369	31	61,613
18-May	5	215	266	57,765	3,369	31	61,651
19-May	5	216	254	57,807	3,376	31	61,689
20-May	4	236	229	57,852	3,377	32	61,730
21-May	4	245	247	57,861	3,381	32	61,770
22-May	5	250	235	57,893	3,384	32	61,799
23-May	3	239	256	57,903	3,391	32	61,824
24-May	3	241	268	57,920	3,396	32	61,860
25-May	2	248	279	57,932	3,397	32	61,890
26-May	2	240	282	57,953	3,407	32	61,916
27-May	2	243	291	57,965	3,407	32	61,940
28-May	3	238	290	57,993	3,414	32	61,970

⁹ Community Care Facilities (i.e. D'Resort, EXPO, Tuas South), Private Hospitals (i.e. Concord International Hospital, Mt Elizabeth Hospital, Gleneagles Hospital, Mt Elizabeth Novena Hospital, Parkway East Hospital), Community Hospitals (i.e. Bright Vision Hospital) and other care facilities.

(4) Number of Stay-Home-Notice (SHN) Issued

Figure 4.1: Daily Number of SHN issued (19 Feb 2020 to 27 May 2021)

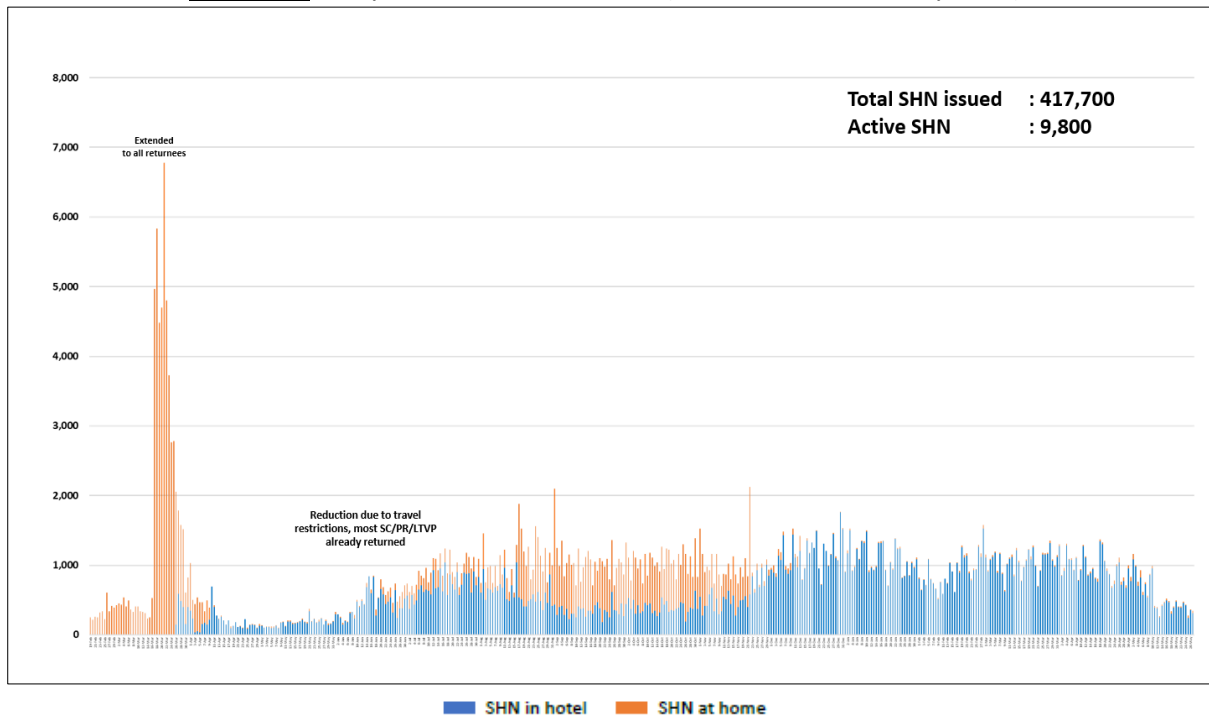
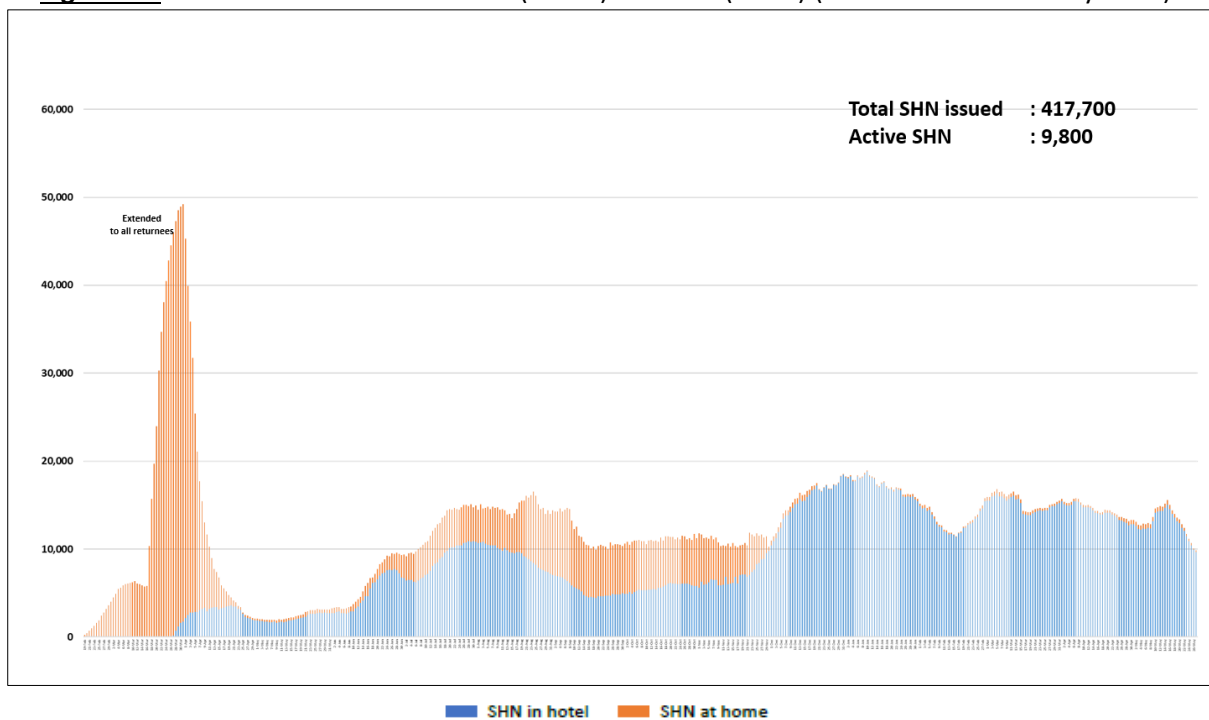


Figure 4.2: Active Stock Number of SHN (Home) and SHN (Hotel) (19 Feb 2020 to 27 May 2021)



(5) Number of Quarantine Orders (QO) Generated

Figure 5.1: Daily Number of QOs Generated

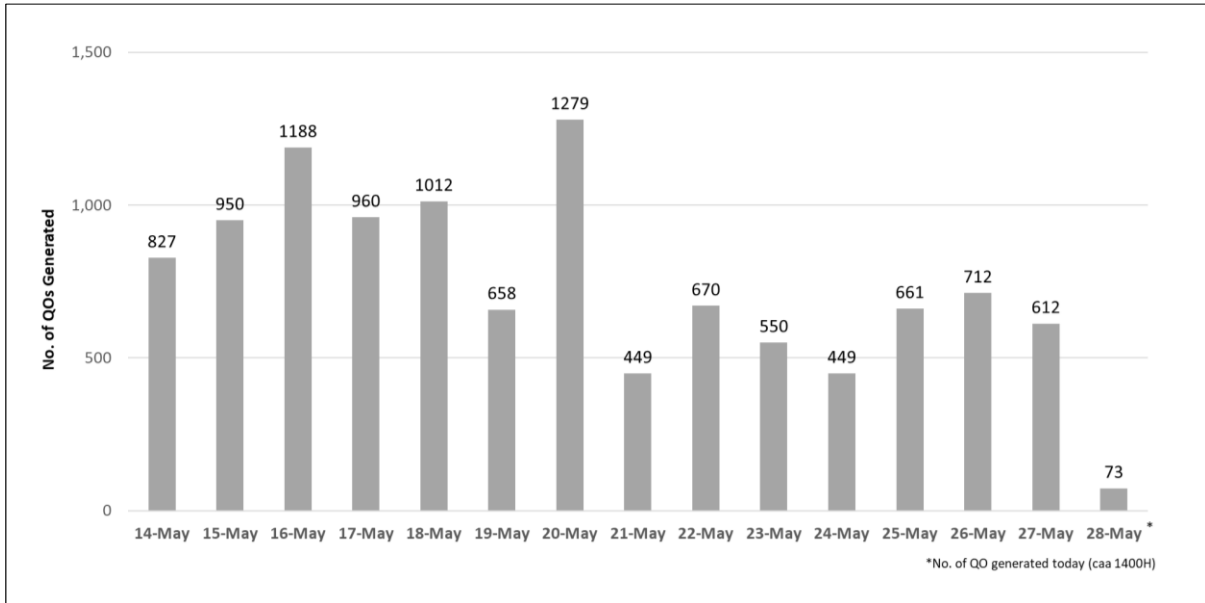


Figure 5.2: Active Number of Persons Under Quarantine (PUQs)

