

**23 July 2021 Daily Report on COVID-19****(1) Number of COVID-19 Cases****Figure 1.1:** Breakdown of New Confirmed Cases in the Past 14 Days

Press Release Date	Imported			Non-Imported Cases														All Cases	
	Isolated before Detection	Detected through Surveillance <sup>2</sup>	Sub-Total	Community Cases								Dorm Residents <sup>1</sup>							
				Isolated before Detection <sup>3</sup>				Detected through Surveillance <sup>4</sup>				Sub-Total	Incidence Rate <sup>5</sup> (per 100,000)	Isolated before Detection <sup>3</sup>	Detected through Surveillance <sup>4</sup>	No. of Cases	Incidence Rate <sup>5</sup> (per 100,000)		
				SC/PR	G or F	Visitor	Sub-Total	SC/PR	G or F	Visitor	Sub-Total								
Before 10-Jul	4,548	330	4,878	786	395	9	1,190	1,308	763	12	2,083	3,273	-	54,527		54,527	-	62,678	
10-Jul	6	0	6	0	0	0	0	0	0	0	0	0	0	0	0	0	0	0	6
11-Jul	7	0	7	0	0	0	0	0	1	0	1	1	0.019	0	0	0	0	0	8
12-Jul	18	0	18	5	0	0	5	2	0	1	3	8	0.15	0	0	0	0	0	26
13-Jul	7	0	7	4	1	0	5	6	3	5	14	19	0.35	0	0	0	0	0	26
14-Jul	4	0	4	13	2	2	17	20	13	6	39	56	1	0	0	0	0	0	60
15-Jul	5	1	6	12	3	2	17	14	7	4	25	42	0.78	0	0	0	0	0	48
16-Jul	8	1	9	16	7	1	24	16	11	1	28	52	0.97	0	0	0	0	0	61
17-Jul	8	0	8	21	9	3	33	22	5	0	27	60	1.1	0	0	0	0	0	68
18-Jul	4	0	4	20	9	0	29	38	16	4	58	87	1.6	1	0	1	0.31	92	
19-Jul	7	2	9	28	16	0	44	88	30	1	119	163	3	0	0	0	0	172	
20-Jul	13	0	13	37	44	0	81	68	32	1	101	182	3.4	0	0	0	0	195	
21-Jul	2	0	2	43	37	0	80	83	15	1	99	179	3.3	0	0	0	0	181	
22-Jul	8	0	8	41	16	1	58	81	20	1	102	160	3	1	1	2	0.62	170	
23-Jul	3	0	3	42	22	0	64	47	18	1	66	130	2.4	0	0	0	0	133	
Total since start of outbreak	4,648	334	4,982	1,068	561	18	1,647	1,793	934	38	2,765	4,412	-	54,530		54,530	-	63,924	
Population at risk												5,381,000				323,000		5,704,000	
Prevalence												0.08%				16.88%		1.12%	

**Notes**

<sup>1</sup> Includes PRs and visitors residing in dorms. Breakdown of dorm cases into those detected through surveillance and those isolated before detection is not available before 24 Aug.

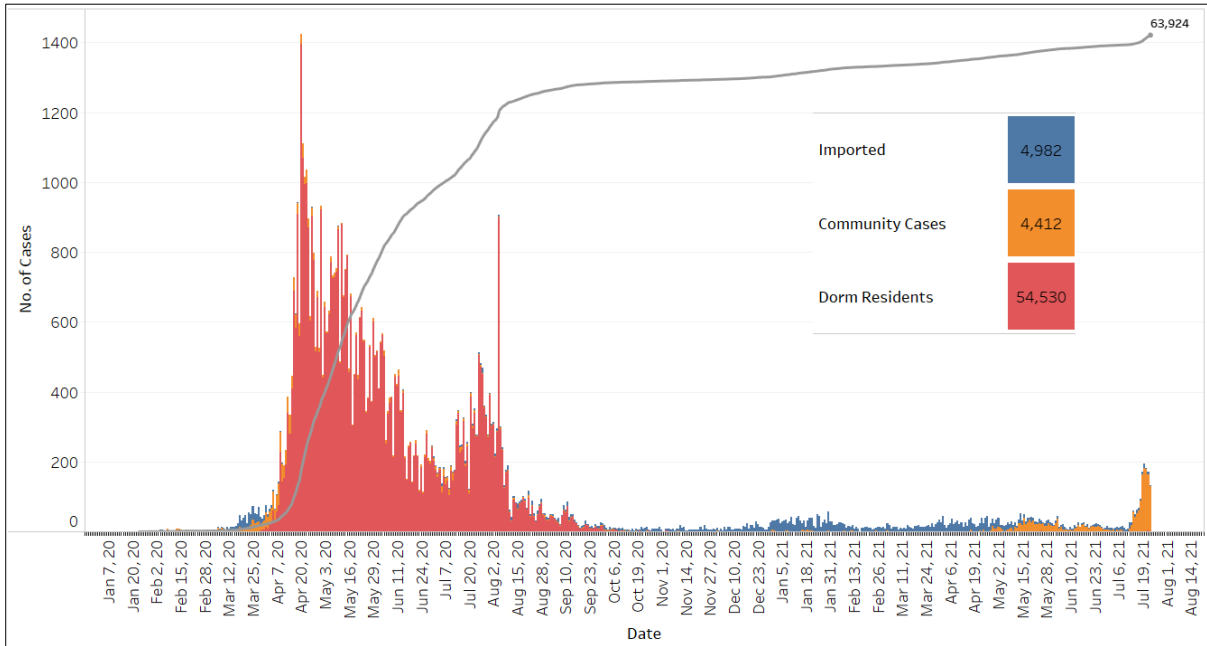
<sup>2</sup> 272 cases were reported before early Apr, and constitute the 1<sup>st</sup> wave of imported cases.

<sup>3</sup> Cases who were already quarantined and tested during quarantine to determine their status.

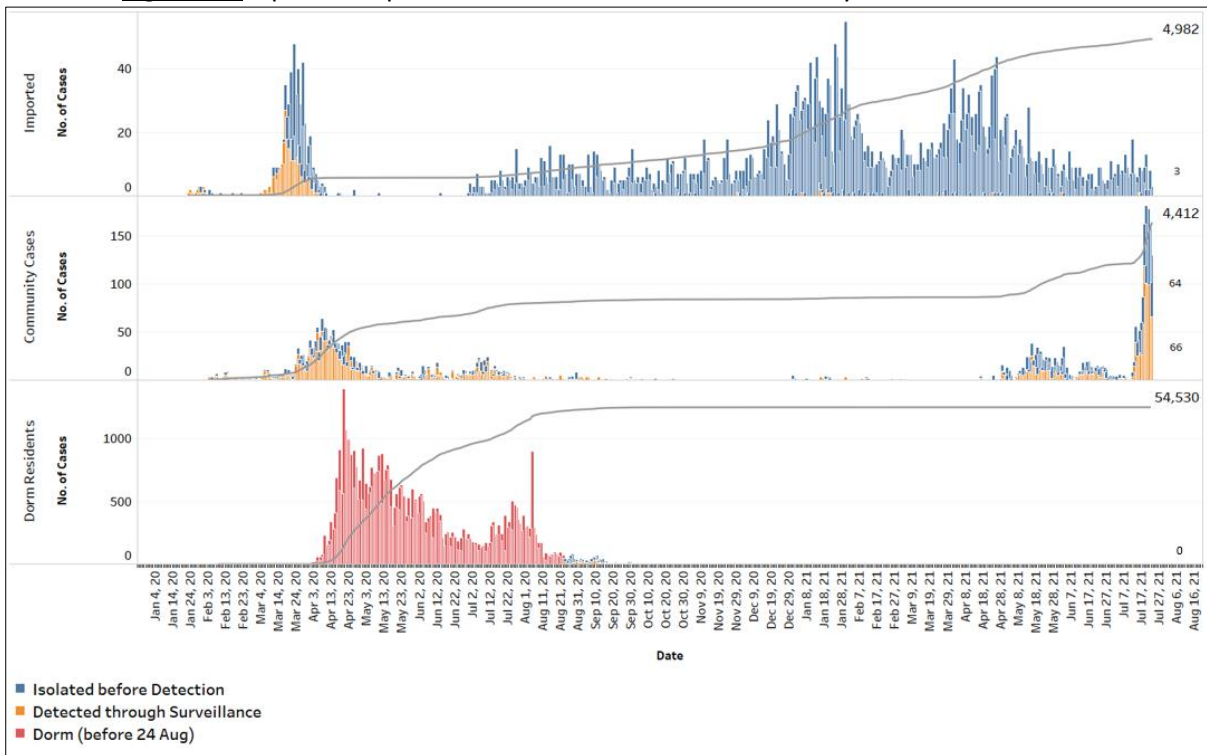
<sup>4</sup> Cases who were identified through surveillance testing, such as the bi-weekly Rostered Routine Testing (RRT) of at-risk workers and testing of those with Acute Respiratory Illness (ARI) symptoms.

<sup>5</sup> Incidence rates are rounded to two significant figures.

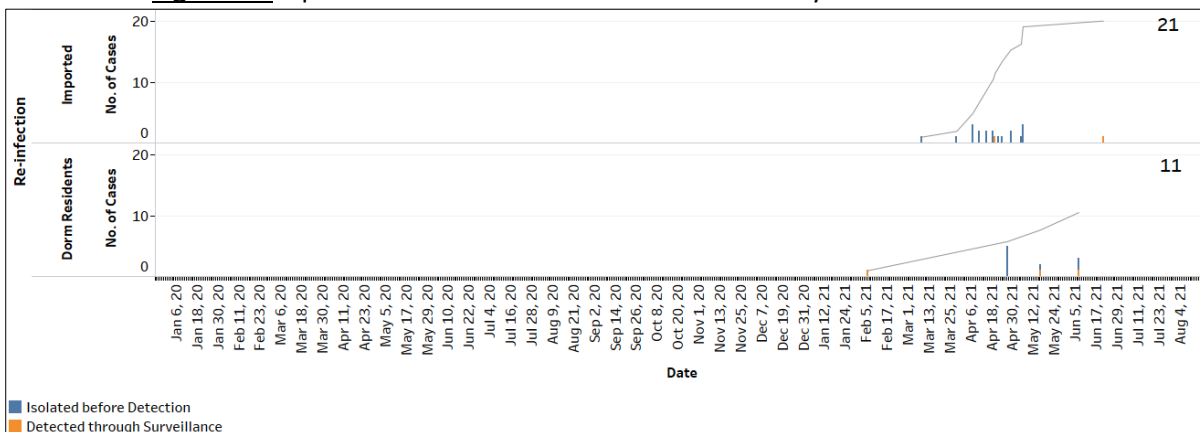
**Figure 1.2:** Epidemic Curve of the COVID-19 Outbreak by Press Release Date



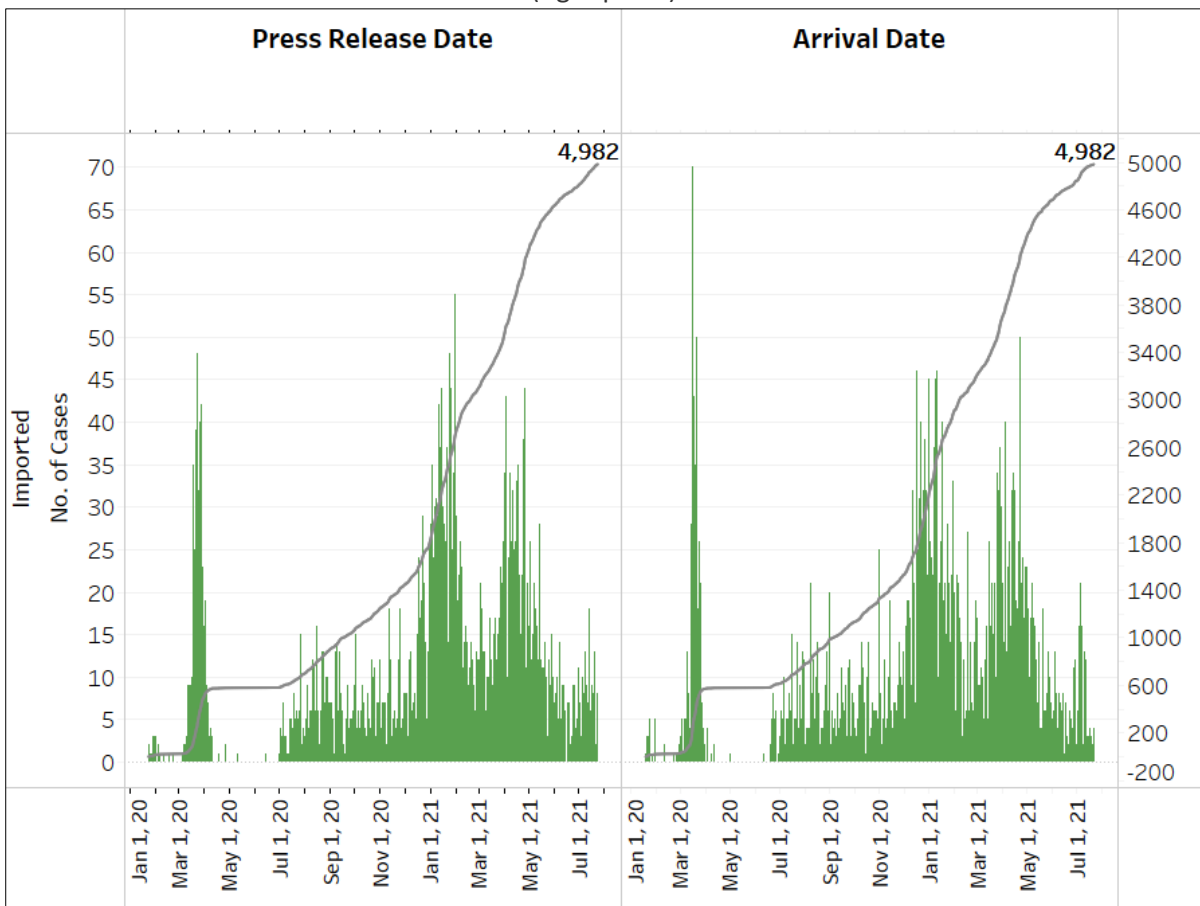
**Figure 1.3:** Epidemic Split Curve of the COVID-19 Outbreak by Press Release Date



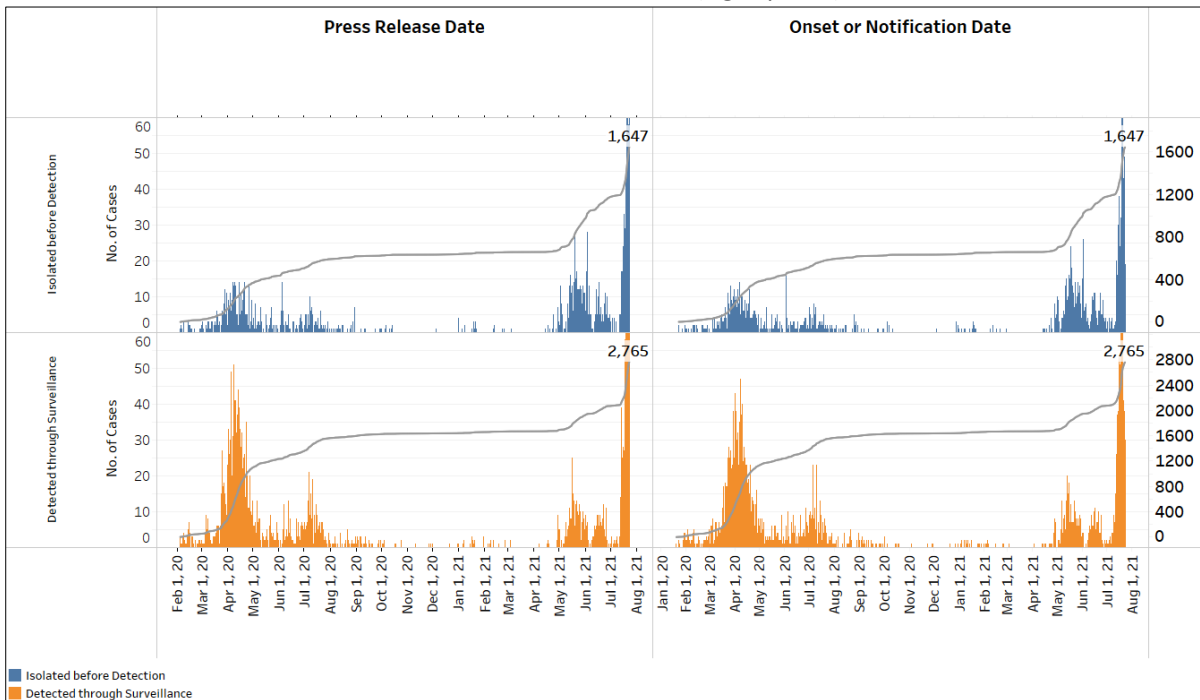
**Figure 1.4:** Epidemic Curve of COVID-19 Re-infections by Press Release Date



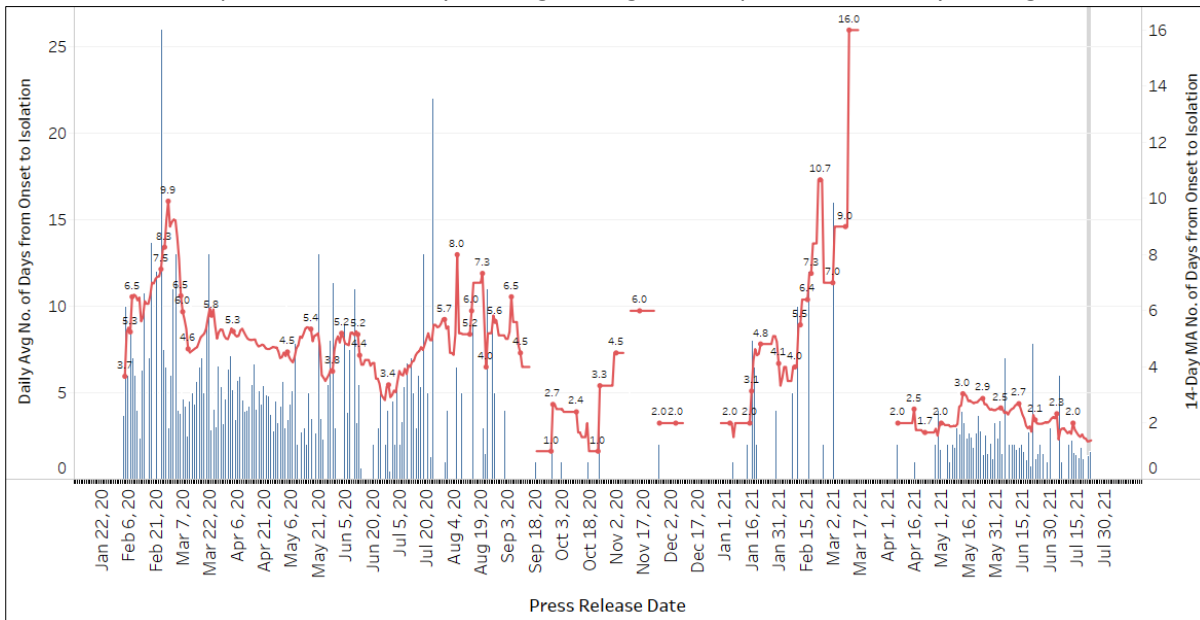
**Figure 1.5:** Epidemic Curve of Imported Cases by Press Release Date (left panel) and Arrival Date (right panel)



**Figure 1.6:** Epidemic Curve of Community Cases by Press Release Date (left panel) and by Symptom Onset or Notification Date<sup>6</sup> (right panel)



**Figure 1.7:** Average Number of Days from Onset of Symptoms to Isolation (QO, hospital admission or notification to MOH) for Community Cases Detected through Surveillance in Each Day  
Line represents the 14-day moving average; Bar represents the daily average<sup>7</sup>



<sup>6</sup> Date of notification was used for cases that did not display any symptoms. The numbers with onset in the past few days may see an increase as more cases are notified.

<sup>7</sup> Area in grey demarcates data points for the past 3 days where some cases may still be pending epidemiological investigation. The bar graph shows the daily average number of days from symptoms onset to isolation, while the line graph shows the moving average for the past 14 days. Both graphs exclude cases with no onset date (asymptomatic) in the computation of the average. Community cases with symptoms who are isolated on the same day that symptoms occurred would have an isolation time of 0. There is a gap in the line graph from 16 to 18 Sep as there are no symptomatic cases in the preceding 14 days.

**Figure 1.8:** Weekly Reclassifications of Previously Reported Cases (next update will be on 26 Jul)

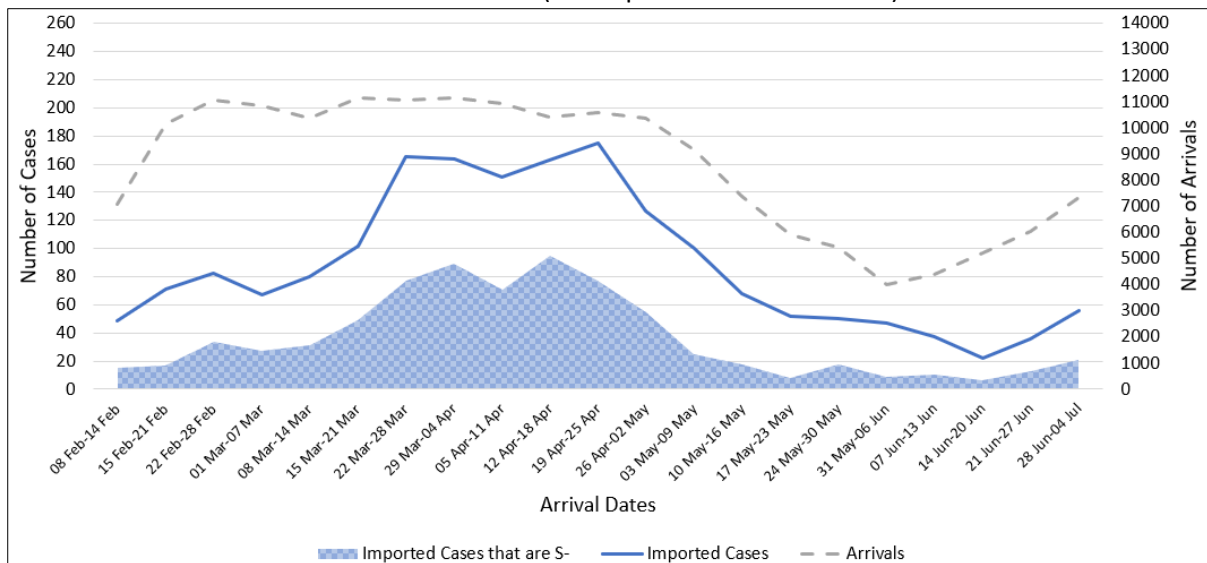
	<b>Imported</b>	<b>Community Linked</b>	<b>Community Unlinked</b>	<b>Dorm Residents</b>	<b>Total</b>
<b>Total number of cases as at 12 Jul</b>	4,909	2,357	925	54,527	<b>62,718</b>
<b>Cases reported 13 Jul - 19 Jul</b>	46	433	47	1	<b>527</b>
<b>Net reclassifications of previously reported cases, incorporated 13 Jul - 19 Jul</b>	0	7	-7	0	<b>0</b>
<b>Total number of cases as at 19 Jul</b>	4,955	2,797	965	54,528	<b>63,245</b>

(2) Imported COVID 19 Cases

**Figure 2.1:** Serology and Symptom Status of Imported Cases Reported from 10 Jul to 16 Jul

Symptoms	S+	S-	Not Serology Tested	Pending Serology Result	Total No. of Cases
Asymptomatic	20	19	0	2	41
Symptomatic	3	13	0	0	16
<b>Total</b>	<b>23</b>	<b>32</b>	<b>0</b>	<b>2</b>	<b>57</b>

**Figure 2.2:** Weekly Total Number of Imported Cases, Imported Cases that are S- and Arrivals from 29 Mar 21 to 4 Jul 21<sup>8</sup> (next update will be on 26 Jul)



<sup>8</sup> Data from the past 2 weeks are excluded as cases on SHN who arrived in the past 2 weeks may not have their test results yet. "Imported Cases that are S-" comprises imported cases who are (a) serology negative; or (b) not tested for serology.

**(3) Number of COVID 19 Cases in Hospitals and Community Care Facilities****Figure 3.1:** Summary of Confirmed Cases by Status in the Past 14 Days

Press Release Date	Currently Admitted in Hospitals		In Care Facilities <sup>9</sup>	Total Recovered		Total Demised	Total
	ICU	General Wards		Completed Isolation	Discharged from Hospital		
10-Jul	2	74	175	58,717	3,680	36	<b>62,684</b>
11-Jul	2	75	165	58,728	3,686	36	<b>62,692</b>
12-Jul	2	78	170	58,744	3,688	36	<b>62,718</b>
13-Jul	2	92	161	58,761	3,692	36	<b>62,744</b>
14-Jul	1	124	176	58,773	3,694	36	<b>62,804</b>
15-Jul	1	179	155	58,783	3,698	36	<b>62,852</b>
16-Jul	1	183	195	58,794	3,704	36	<b>62,913</b>
17-Jul	1	195	237	58,805	3,707	36	<b>62,981</b>
18-Jul	1	242	268	58,813	3,713	36	<b>63,073</b>
19-Jul	1	288	388	58,816	3,716	36	<b>63,245</b>
20-Jul	1	331	529	58,826	3,717	36	<b>63,440</b>
21-Jul	1	378	646	58,837	3,723	36	<b>63,621</b>
22-Jul	1	414	764	58,852	3,724	36	<b>63,791</b>
23-Jul	2	445	854	58,860	3,727	36	<b>63,924</b>

<sup>9</sup> Community Care Facilities (i.e. D'Resort, EXPO, Tuas South), Private Hospitals (i.e. Concord International Hospital, Mt Elizabeth Hospital, Gleneagles Hospital, Mt Elizabeth Novena Hospital, Parkway East Hospital), Community Hospitals (i.e. Bright Vision Hospital) and other care facilities.

(4) Number of Stay Home Notice (SHN) Issued

Figure 4.1: Daily Number of SHN issued (19 Feb 2020 to 22 Jul 2021)

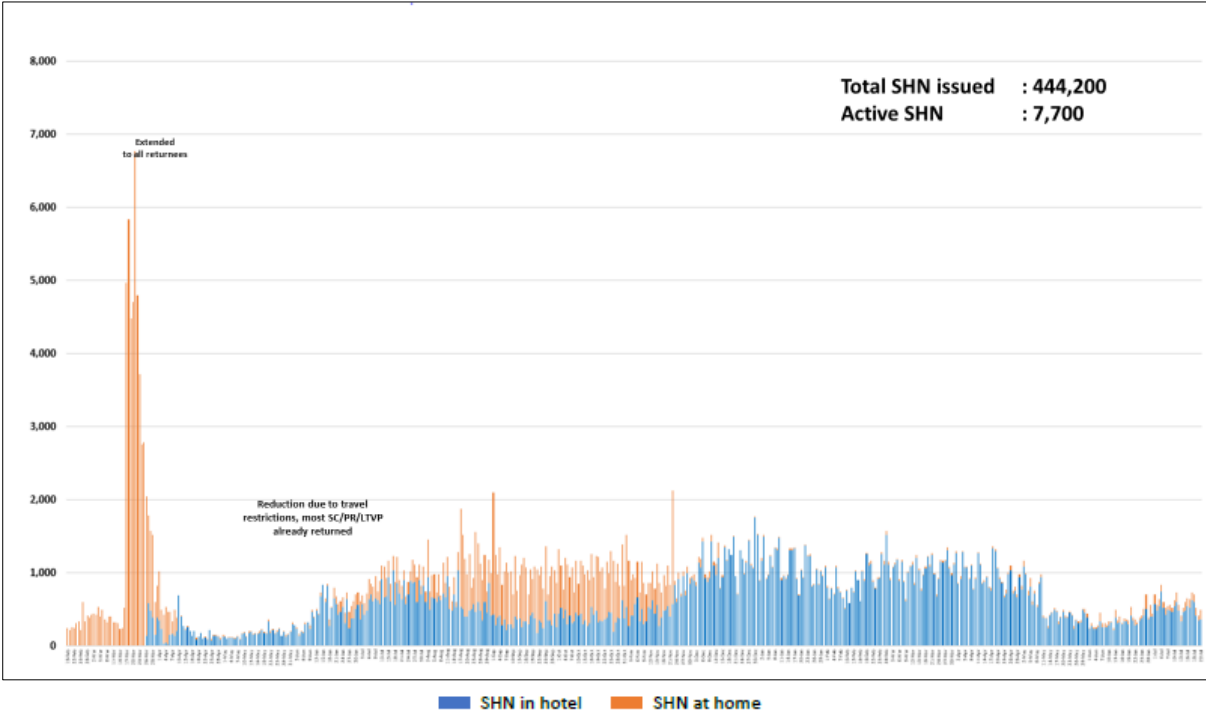
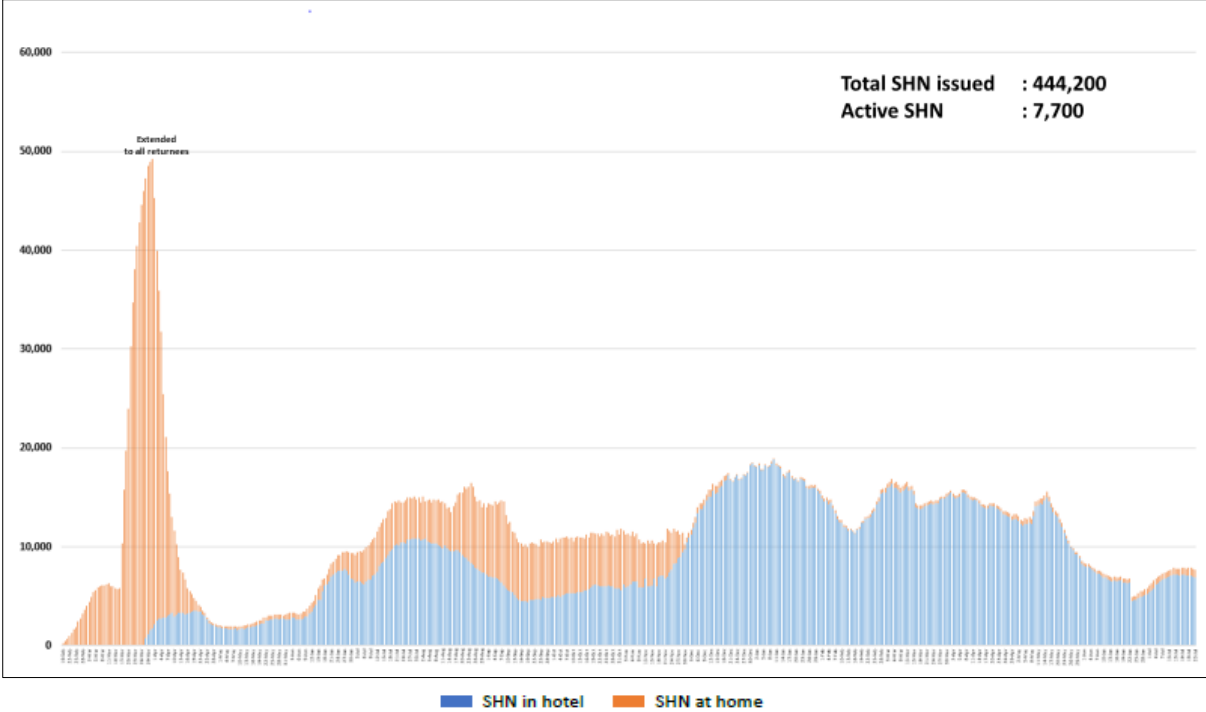


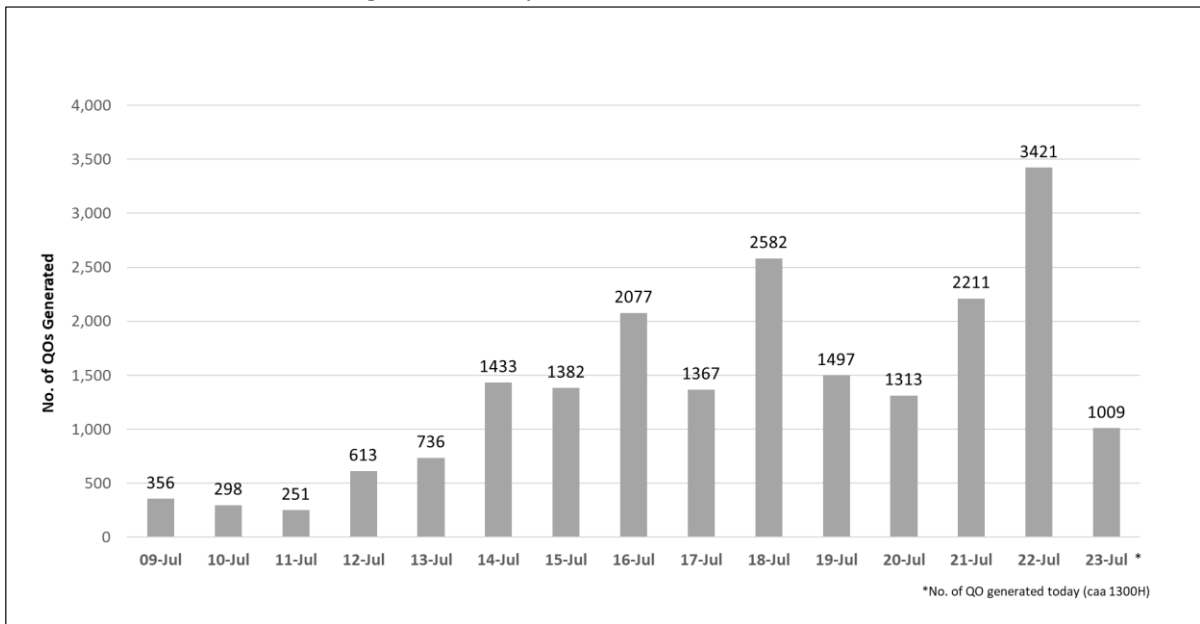
Figure 4.2: Active Stock Number of SHN (Home) and SHN (Hotel) (19 Feb 2020 to 22 Jul 2021)





**(5) Number of Quarantine Orders (QO) Generated**

**Figure 5.1:** Daily Number of QOs Generated



**Figure 5.2:** Active Number of Persons Under Quarantine (PUQs)

