

9 November 2022 Weekly Report on COVID-19

Figure 1: Daily Number of Local Cases (12 Oct – 8 Nov)

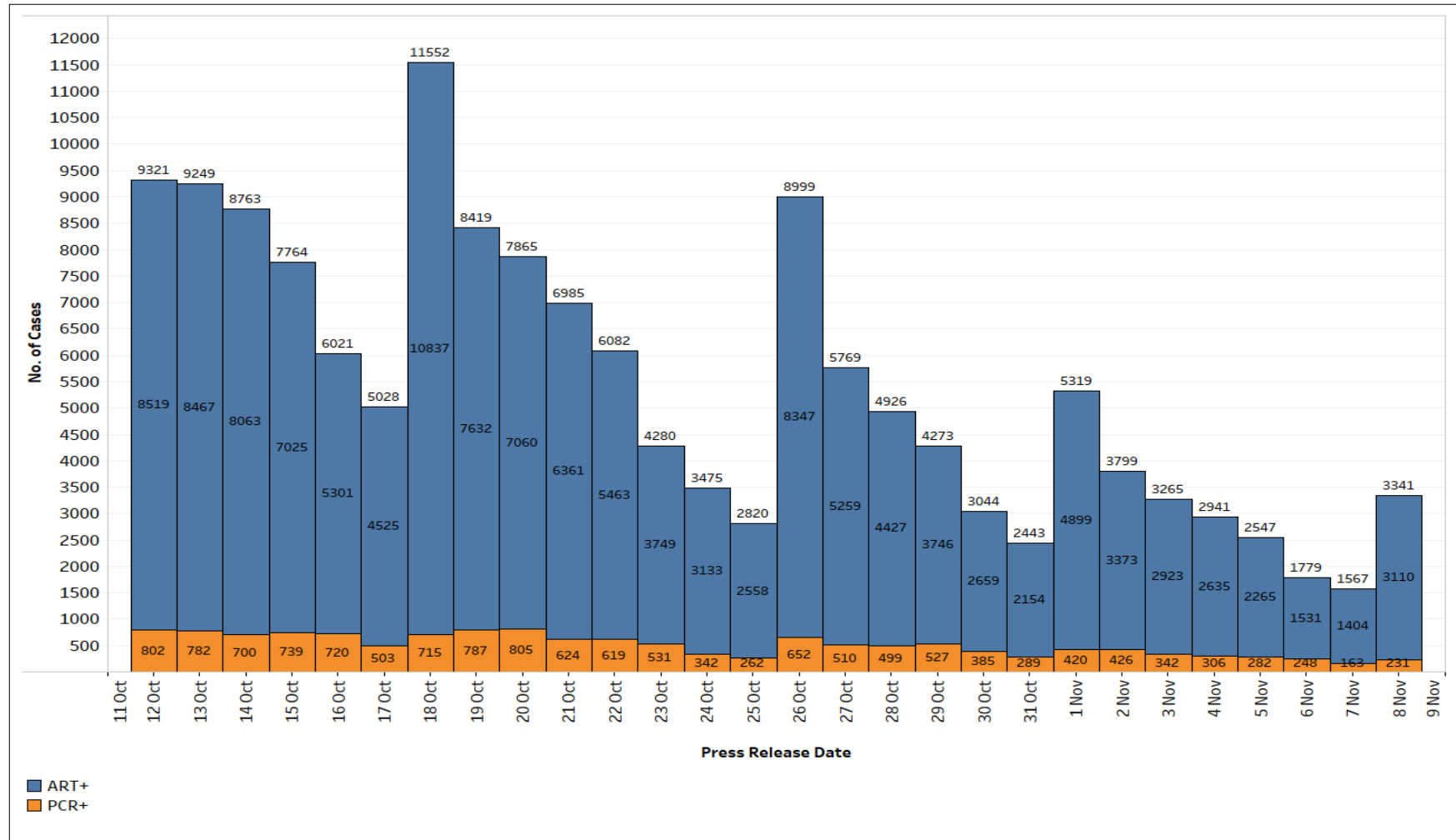


Figure 2: 7-day Moving Average Local Cases by day (12 Oct – 8 Nov)

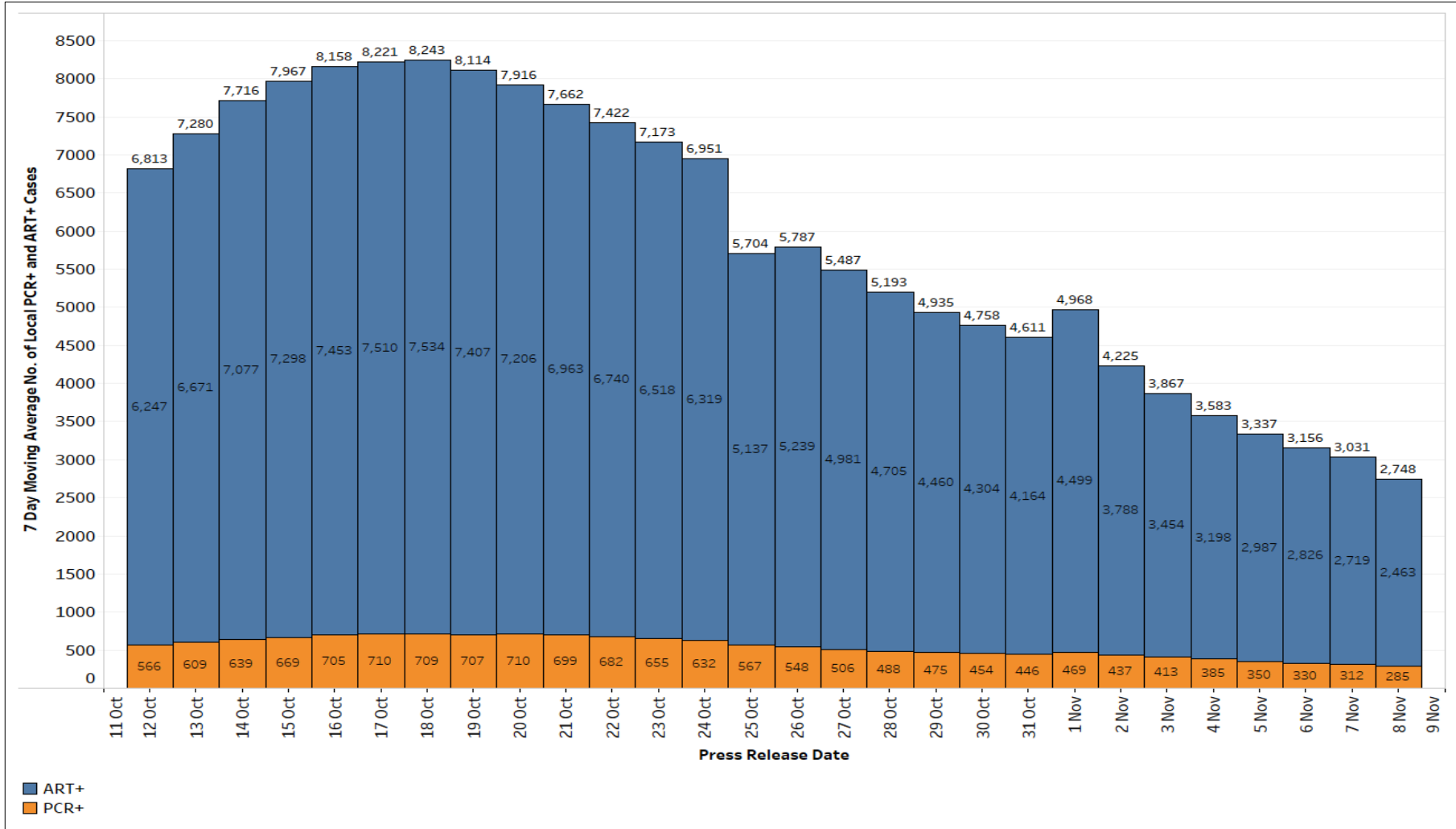


Figure 3: COVID-19 Patients Needing Oxygen Supplementation, ICU Care or Died, by Age Groups (12 Oct – 8 Nov)

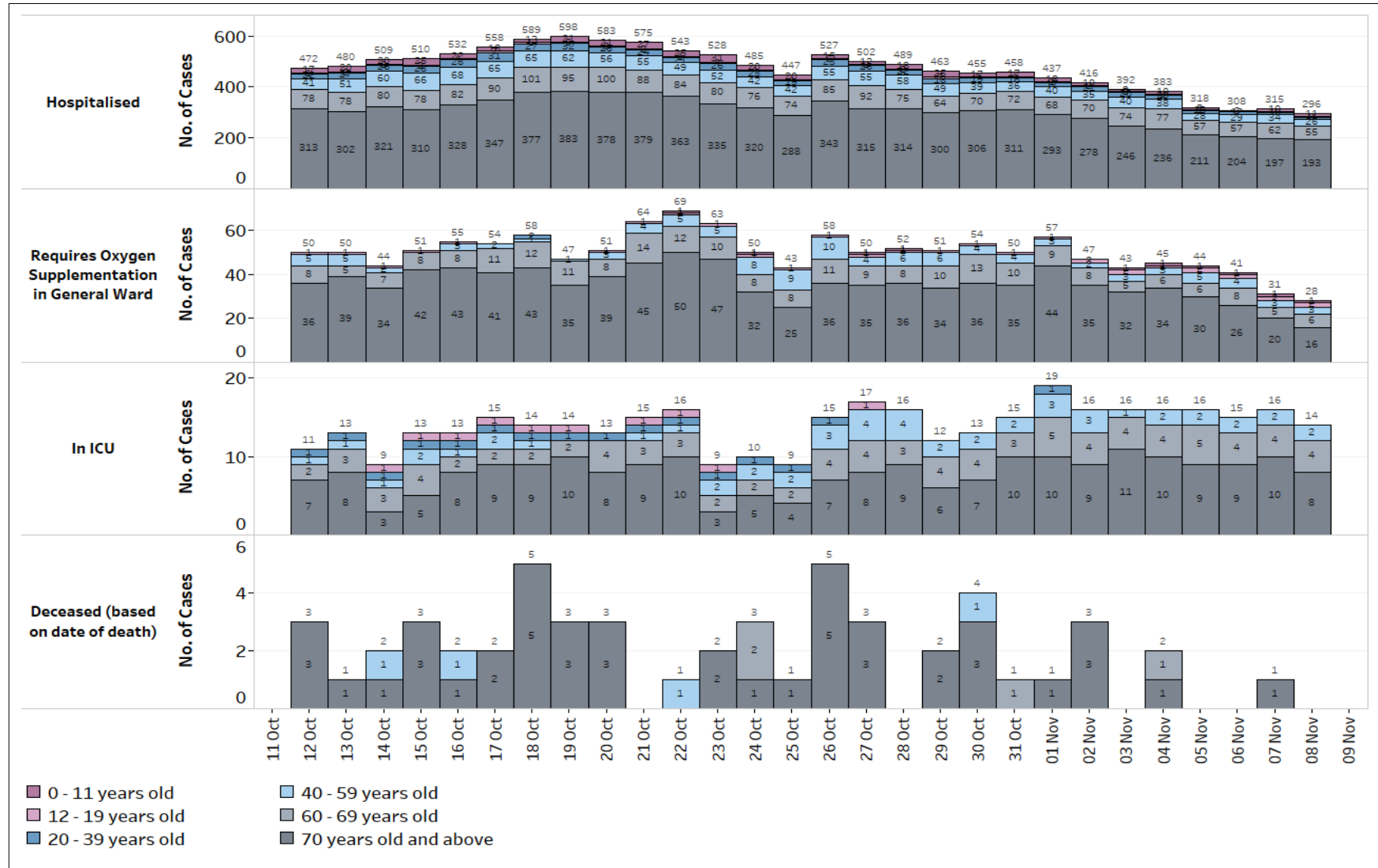
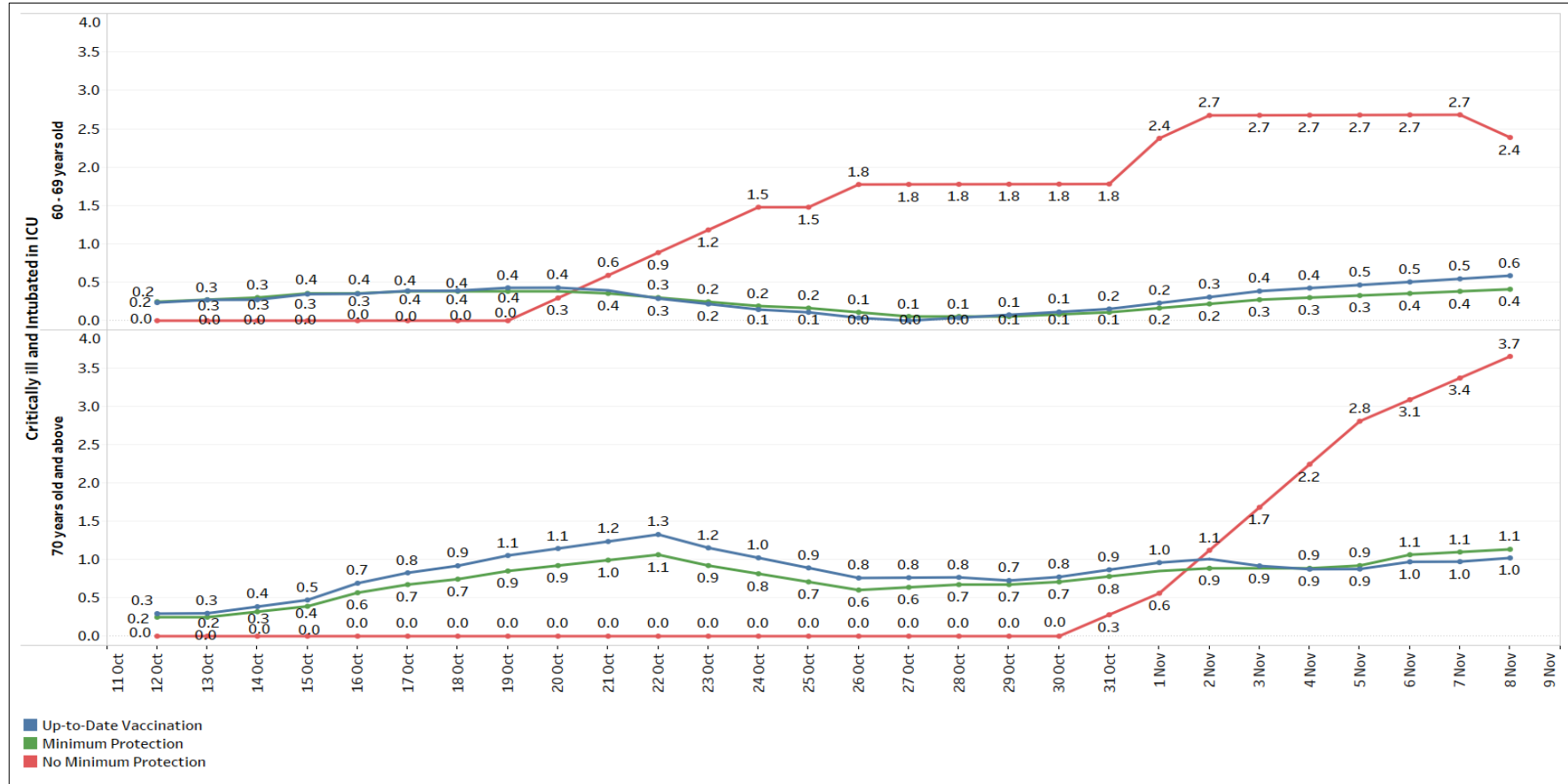
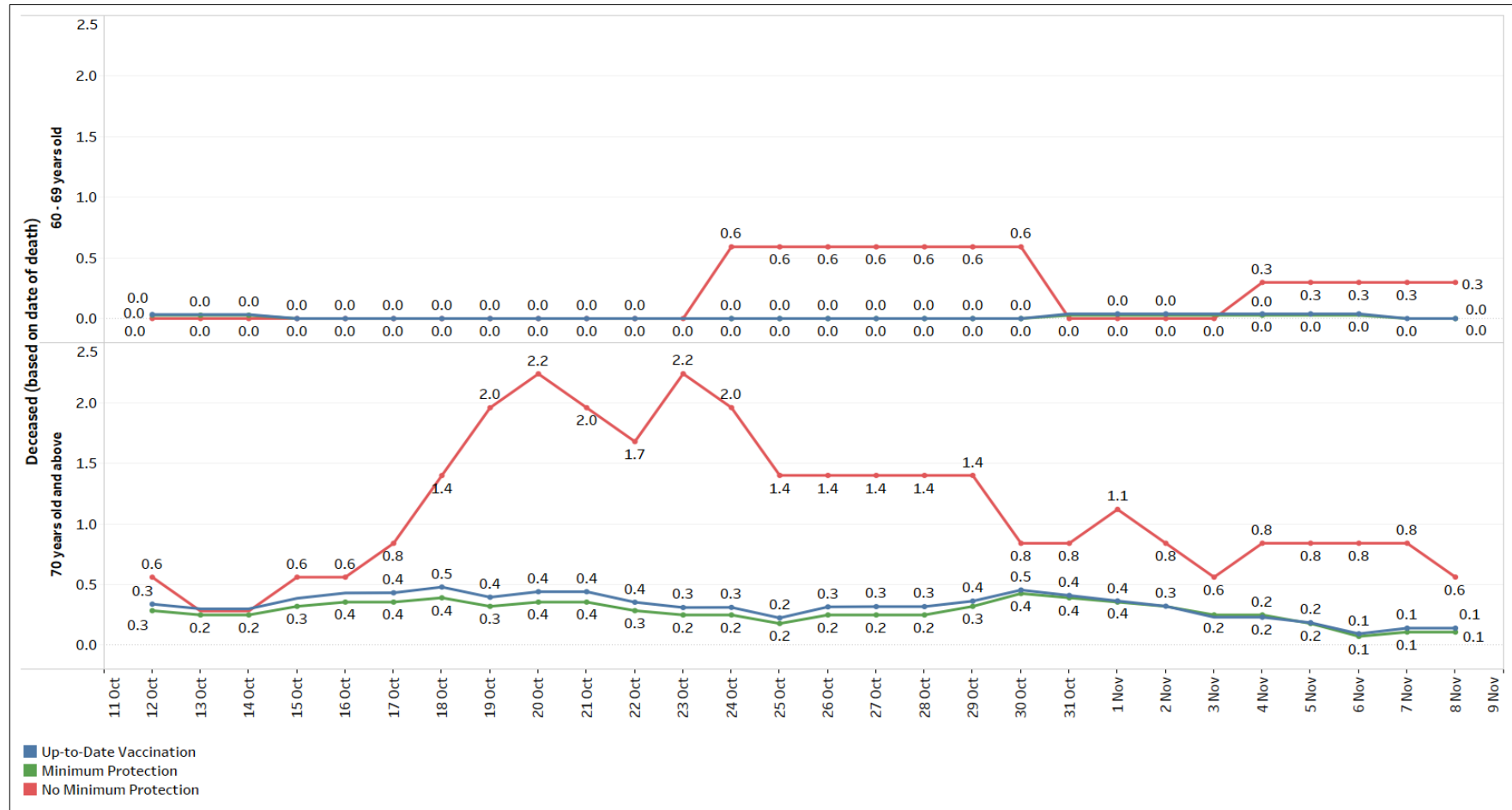


Figure 4: 7-Day Moving Average Number of Active Cases between 60 – 69, and 70 years old and above that are Critically ill and Intubated in ICU, per 100,000 Population by Vaccination Status¹ (12 Oct – 8 Nov)



¹ Vaccination categories have been updated with the new definitions as follows: (i) Minimum Protection: Individuals aged 5 years and above are considered to have minimum protection if they have completed three mRNA or Novavax/Nuvaxovid doses, or four Sinovac CoronaVac doses; and (ii) Up-to-Date Vaccination: Individuals are considered up to date with their COVID 19 vaccination if they have received at least the minimum protection and their last vaccine dose was received within the past one year.

Figure 5: 7-Day Moving Average Number of Deaths Among Cases between 60 – 69, and 70 years old and above, per 100,000 Population by Vaccination² Status (12 Oct – 8 Nov)



² Vaccination categories have been updated with the new definitions as follows: (i) Minimum Protection: Individuals aged 5 years and above are considered to have minimum protection if they have completed three mRNA or Novavax/Nuvaxovid doses, or four Sinovac CoronaVac doses; and (ii) Up-to-Date Vaccination: Individuals are considered up to date with their COVID 19 vaccination if they have received at least the minimum protection and their last vaccine dose was received within the past one year.

Figure 6: Number and Week-on-Week Ratio of General Wards O2 + ICU (Intubated + Close Monitoring) Cases (12 Oct – 8 Nov)

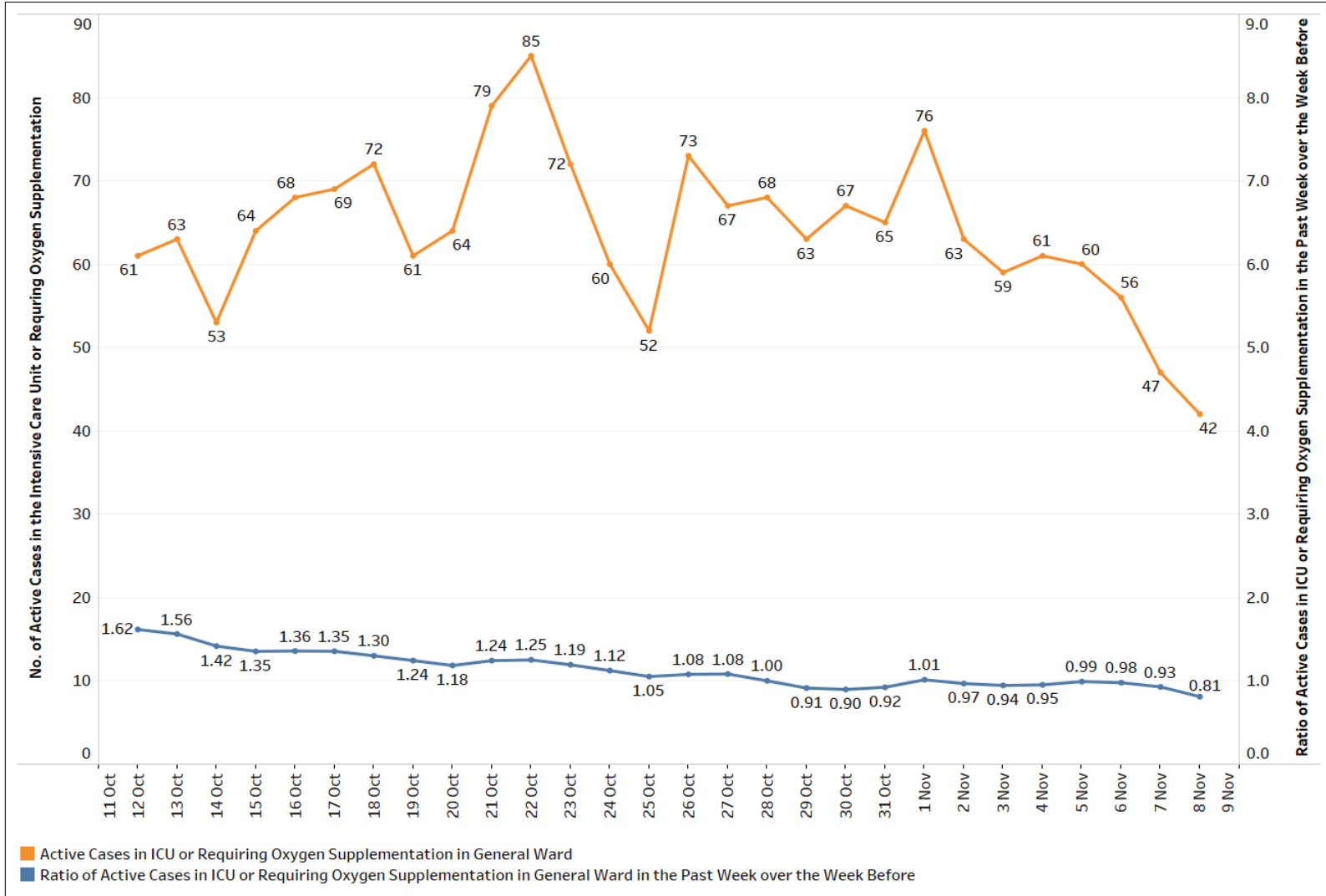


Figure 7: Number and Week-on-Week Ratio of ICU (Intubated + Close Monitoring) Cases (12 Oct – 8 Nov)

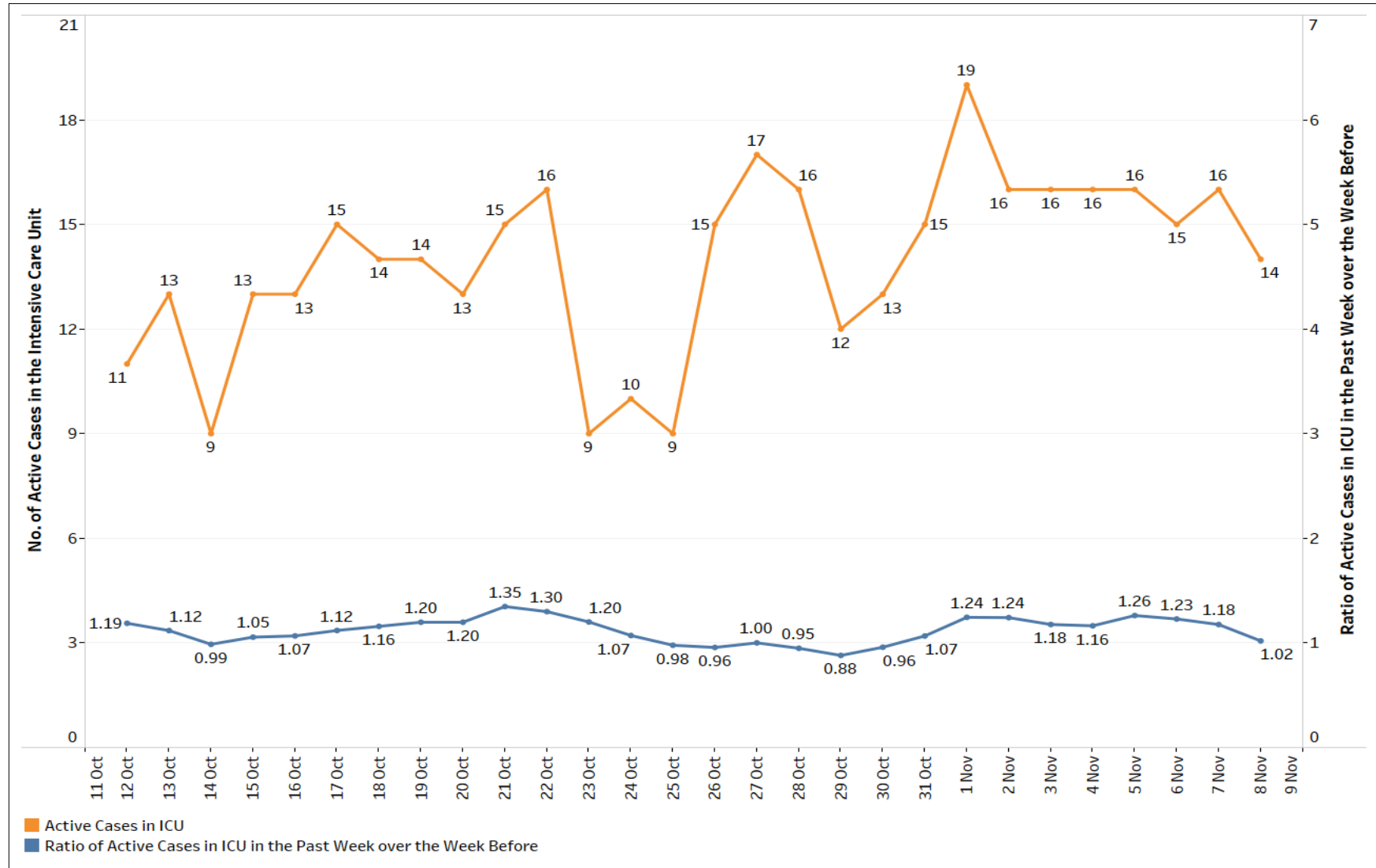


Figure 8: Deaths, Admissions into ICU and Discharges from ICU
Among Local Cases by Notification Date (12 Oct – 8 Nov)

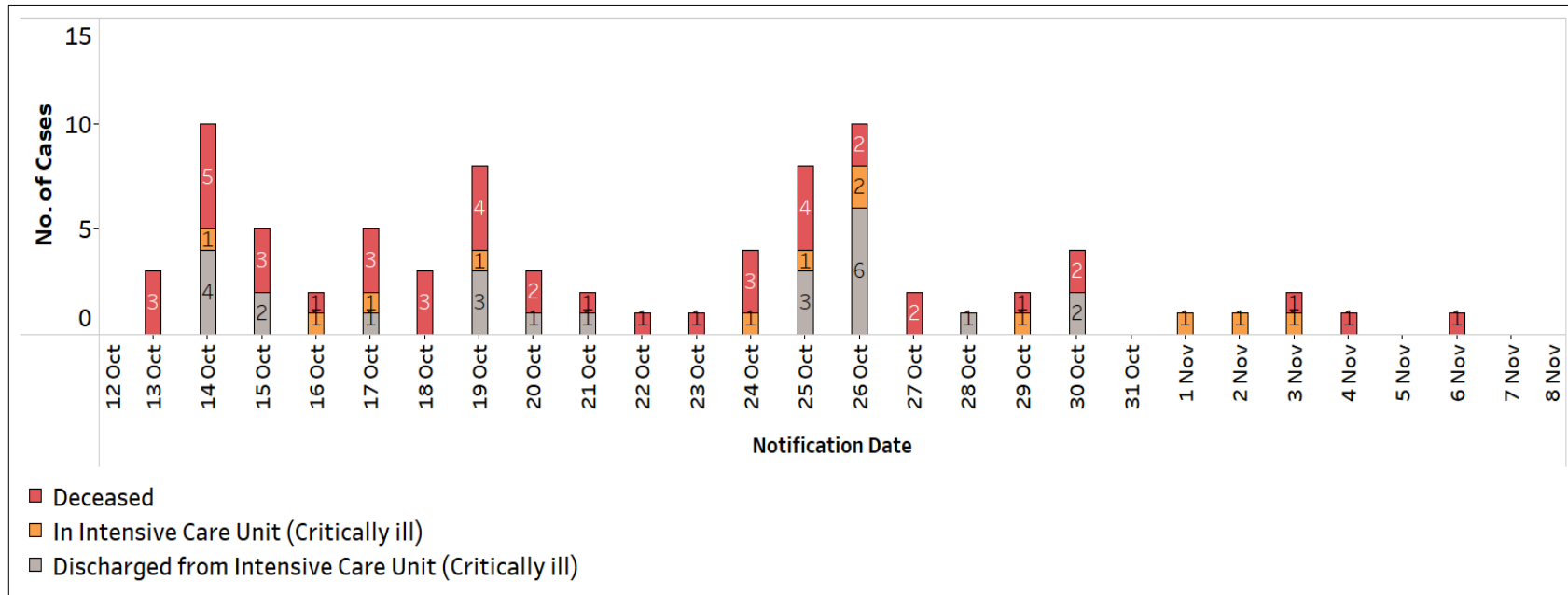


Figure 9: COVID-19 Cases and Virus Level in Wastewater over time (1 Jul 2021 – 6 Nov 2022)

The line graph (in black) reflects the daily 3-day moving average (3DMA) of the wastewater COVID-19 virus levels from all testing sites in the community. The stacked area chart (in pink) reflects the daily number of COVID-19 cases reported in the community.

