

**11 November 2020 Daily Report on COVID-19****(1) Number of COVID-19 Cases****Figure 1.1:** Breakdown of New Confirmed Cases in the Past 14 Days

Press Release Date	Imported			Non-Imported Cases														All Cases	
				Community Cases								Dorm Residents <sup>1</sup>							
	Isolated before Detection	Detected through Surveillance <sup>2</sup>	Sub-Total	Isolated before Detection <sup>3</sup>				Detected through Surveillance <sup>4</sup>				Sub-Total	Incidence Rate <sup>5</sup> (per 100,000)	Isolated before Detection <sup>3</sup>	Detected through Surveillance <sup>4</sup>	No. of Cases	Incidence Rate <sup>5</sup> (per 100,000)		
				SC/PR	G or F	Visitor	Sub-Total	SC/PR	G or F	Visitor	Sub-Total								
Before 29-Oct	950	273	1,223	367	265	1	633	990	635	10	1,635	2,268	-	54,496		54,496	-	57,987	
29-Oct	7	0	7	0	0	0	0	0	0	0	0	0	0	0	0	0	0	0	7
30-Oct	7	0	7	0	0	0	0	1	0	0	1	1	0.019	1	0	1	0.31	9	
31-Oct	12	0	12	0	0	0	0	0	0	0	0	0	0	0	0	0	0	12	
1-Nov	4	0	4	0	0	0	0	0	0	0	0	0	0	0	0	0	0	4	
2-Nov	1	0	1	0	0	0	0	0	0	0	0	0	0	0	0	0	0	1	
3-Nov	7	0	7	0	0	0	0	0	0	0	0	0	0	0	2	2	0.62	9	
4-Nov	5	0	5	0	0	0	0	0	0	0	0	0	0	0	2	2	0.62	7	
5-Nov	6	0	6	0	0	0	0	0	0	1	1	1	0.019	0	0	0	0	7	
6-Nov	4	0	4	0	0	0	0	0	0	0	0	0	0	0	0	0	0	4	
7-Nov	7	0	7	0	0	0	0	0	0	0	0	0	0	0	0	0	0	7	
8-Nov	2	0	2	0	0	0	0	0	0	0	0	0	0	0	0	0	0	2	
9-Nov	8	0	8	0	0	0	0	0	0	0	0	0	0	0	0	0	0	8	
10-Nov	7	0	7	0	0	0	0	0	1	0	1	1	0.019	0	1	1	0.31	9	
11-Nov	18	0	18	0	0	0	0	0	0	0	0	0	0	0	0	0	0	18	
Total since start of outbreak	1,045	273	1,318	367	265	1	633	991	636	11	1,638	2,271	-	54,502		54,502	-	58,091	
Population at risk												5,381,000				323,000		5,704,000	
Prevalence												0.04%				16.87%		1.02%	

**Notes**

<sup>1</sup> Includes PRs and visitors residing in dorms. Breakdown of dorm cases into those detected through surveillance and those isolated before detection is not available before 24 Aug.

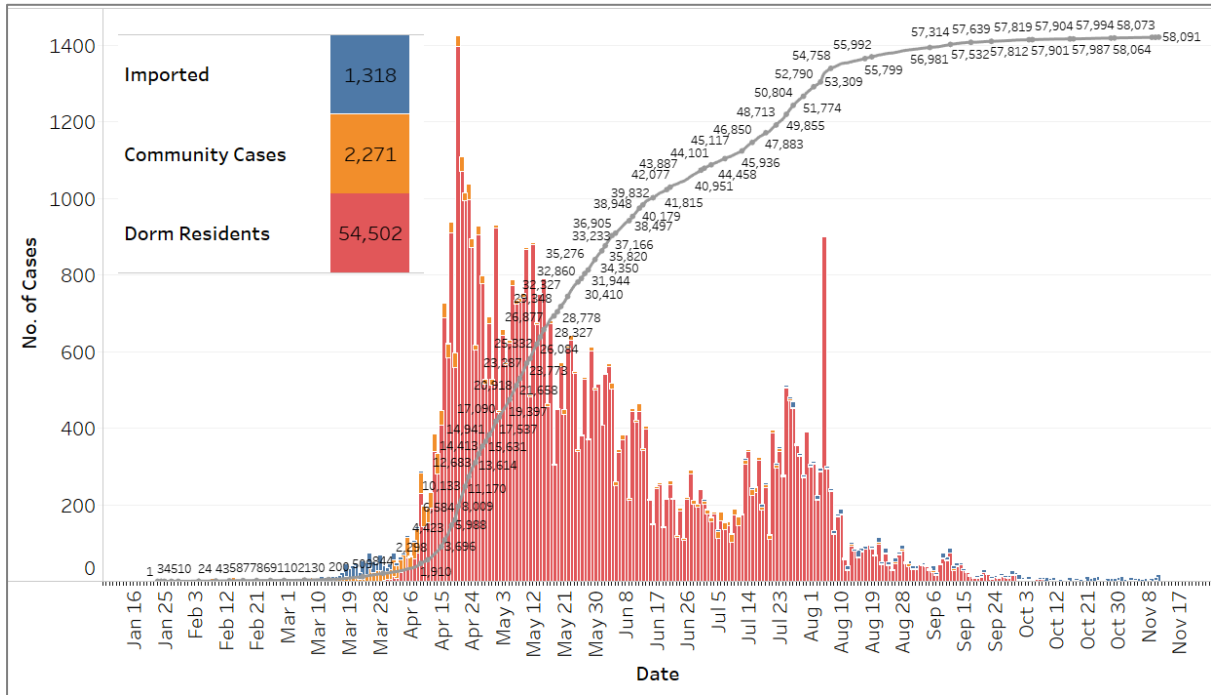
<sup>2</sup> 272 cases were reported before early Apr, and constitute the 1<sup>st</sup> wave of imported cases. 1 case in Oct tested negative during his 14-day SHN and was subsequently identified as a positive case through a pre-departure swab test.

<sup>3</sup> Cases who were already quarantined and tested during quarantine to determine their status.

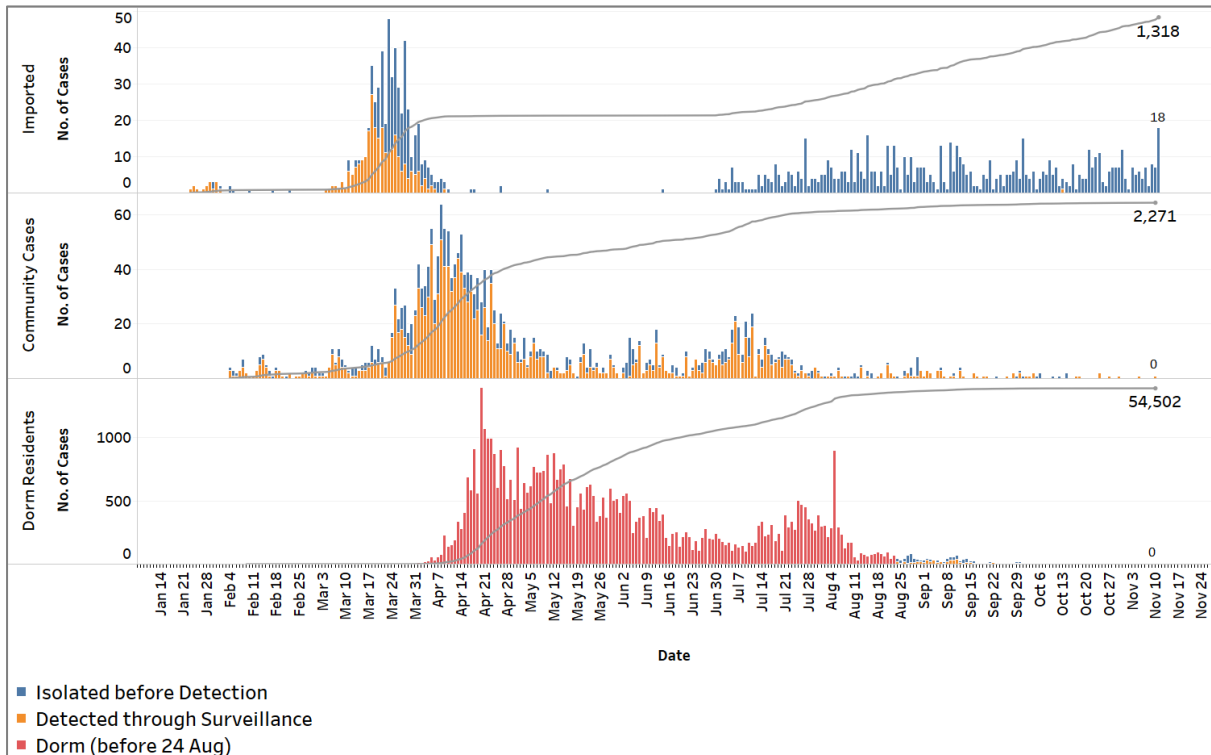
<sup>4</sup> Cases who were identified through surveillance testing, such as the bi-weekly Rostered Routine Testing (RRT) of at-risk workers and testing of those with Acute Respiratory Illness (ARI) symptoms.

<sup>5</sup> Incidence rates are rounded to two significant figures.

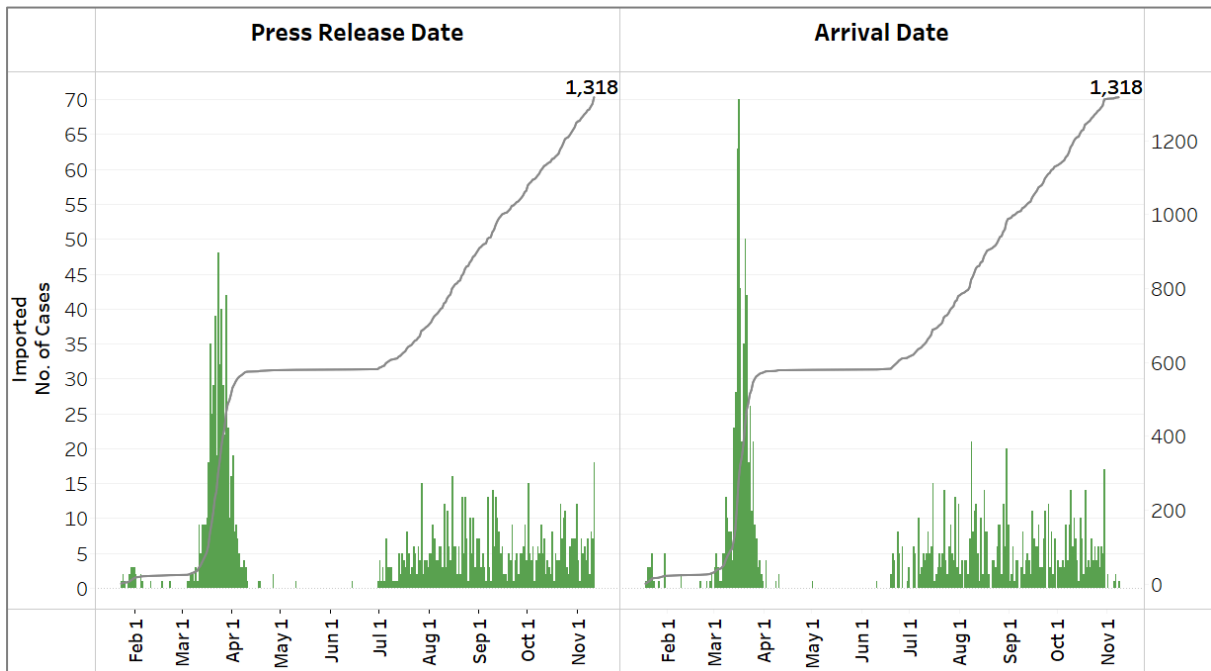
**Figure 1.2:** Epidemic Curve of the COVID-19 Outbreak by Press Release Date



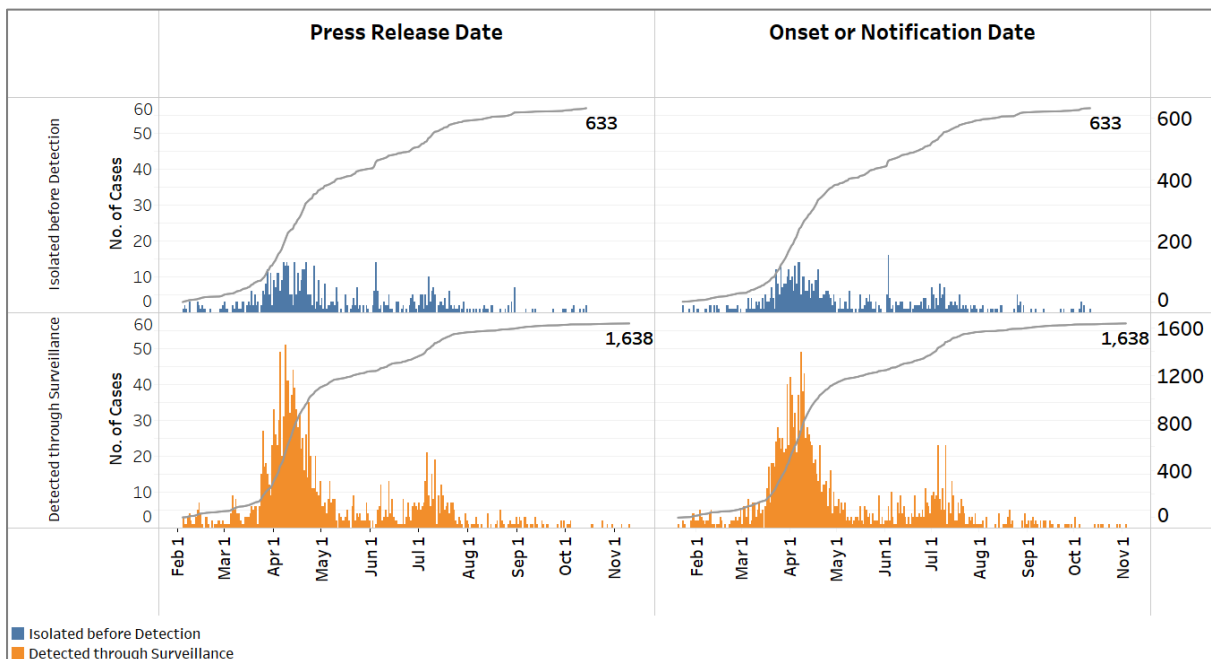
**Figure 1.3:** Epidemic Split Curve of the COVID-19 Outbreak by Press Release Date



**Figure 1.4:** Epidemic Curve of Imported Cases by Press Release Date (left panel) and Arrival Date (right panel)

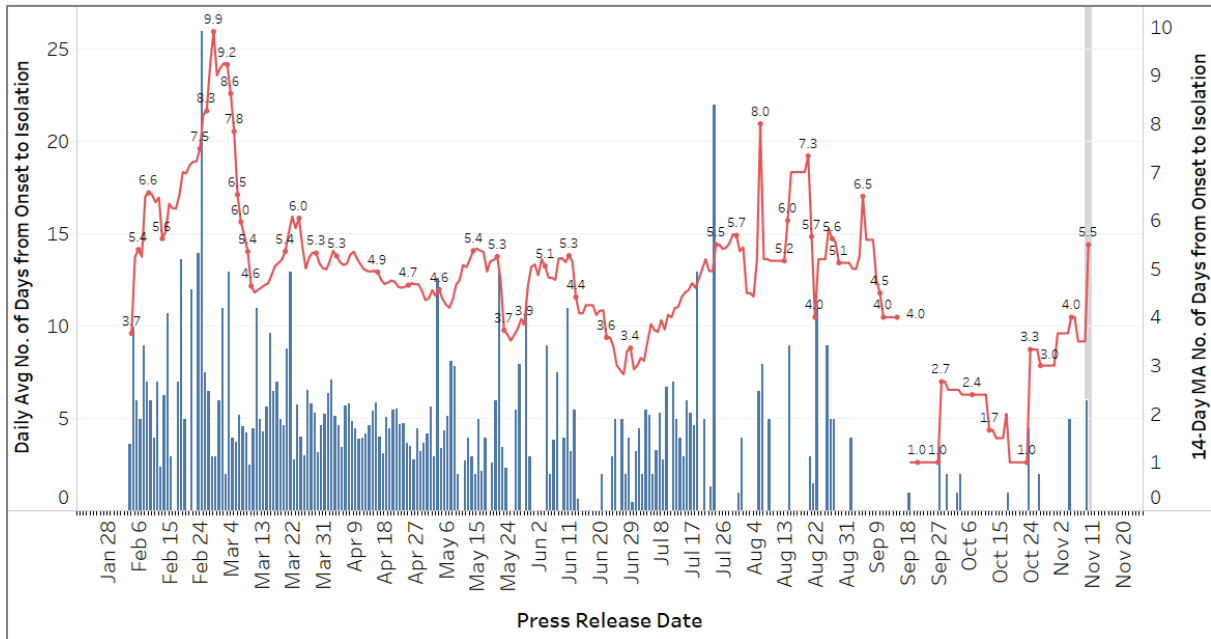


**Figure 1.5:** Epidemic Curve of Community Cases by Press Release Date (left panel) and by Symptom Onset or Notification Date<sup>1</sup> (right panel)



<sup>1</sup> Date of notification was used for cases that did not display any symptoms. The numbers with onset in the past few days may see an increase as more cases are notified.

**Figure 1.6:** Average Number of Days from Onset of Symptoms to Isolation (QO, hospital admission or notification to MOH) for Community Cases Detected through Surveillance in Each Day



*Line represents the 14-day moving average; Bar represents the daily average<sup>2</sup>*

<sup>2</sup> Area in grey demarcates data points for the past 3 days where some cases may still be pending epidemiological investigation. The bar graph shows the daily average number of days from symptoms onset to isolation, while the line graph shows the moving average for the past 14 days. Both graphs exclude cases with no onset date (asymptomatic) in the computation of the average. Community cases with symptoms who are isolated on the same day that symptoms occurred would have an isolation time of 0. There is a gap in the line graph from 16 to 18 Sep as there are no symptomatic cases in the preceding 14 days.

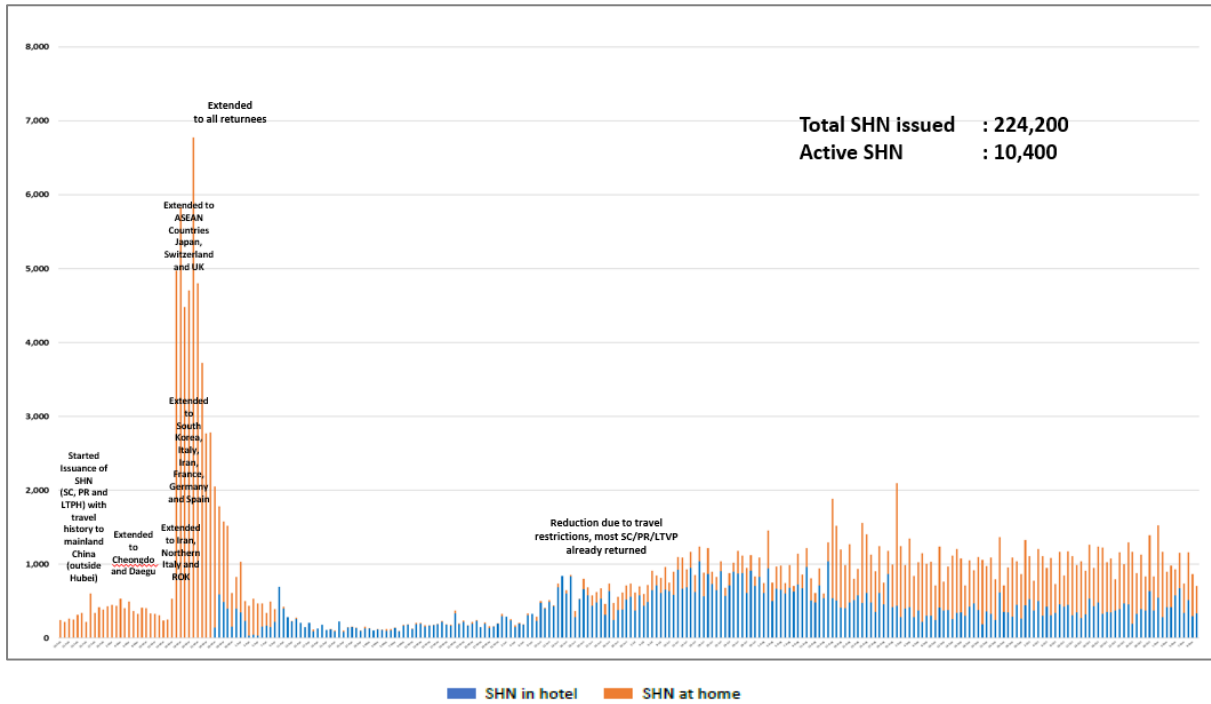
**(2) Number of COVID-19 Cases in Hospitals and Community Care Facilities****Figure 2.1:** Summary of Confirmed Cases by Status in the Past 14 Days

Press Release Date	Currently Admitted in Hospitals		In Care Facilities <sup>3</sup>	Total Recovered		Total Demised	Total
	ICU	General Wards		Completed Isolation	Discharged from Hospital		
29-Oct	0	37	30	55,317	2,582	28	57,994
30-Oct	0	42	24	55,326	2,583	28	58,003
31-Oct	0	42	32	55,327	2,586	28	58,015
1-Nov	0	46	21	55,331	2,593	28	58,019
2-Nov	0	46	22	55,331	2,593	28	58,020
3-Nov	0	38	26	55,334	2,603	28	58,029
4-Nov	0	44	26	55,335	2,603	28	58,036
5-Nov	0	40	26	55,339	2,610	28	58,043
6-Nov	0	36	24	55,343	2,616	28	58,047
7-Nov	0	34	24	55,345	2,623	28	58,054
8-Nov	0	33	20	55,348	2,627	28	58,056
9-Nov	0	34	21	55,353	2,628	28	58,064
10-Nov	0	40	20	55,355	2,630	28	58,073
11-Nov	0	33	40	55,358	2,632	28	58,091

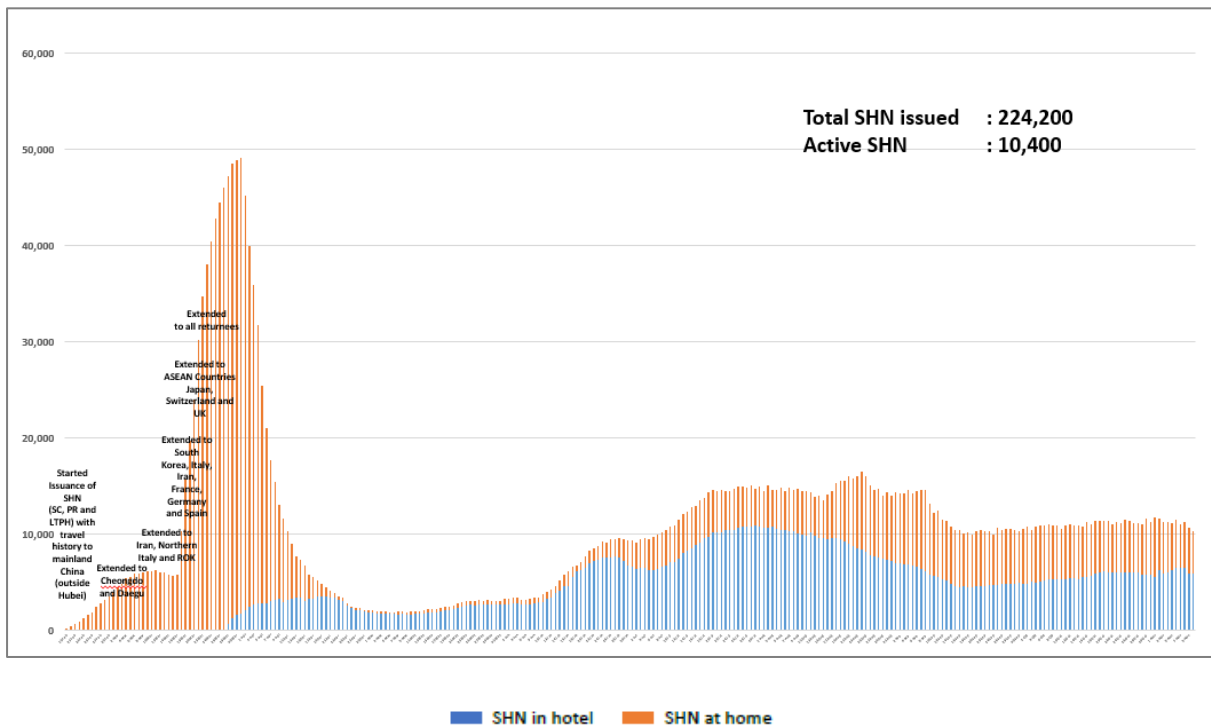
<sup>3</sup> Community Care Facilities (i.e. D'Resort, EXPO), Private Hospitals (i.e. Concord International Hospital, Mt Elizabeth Hospital, Gleneagles Hospital, Mt Elizabeth Novena Hospital, Parkway East Hospital), Community Hospitals (i.e. Bright Vision Hospital) and other care facilities.

**(3) Number of Stay-Home-Notice (SHN) Issued**

**Figure 3.1:** Daily Number of SHN issued

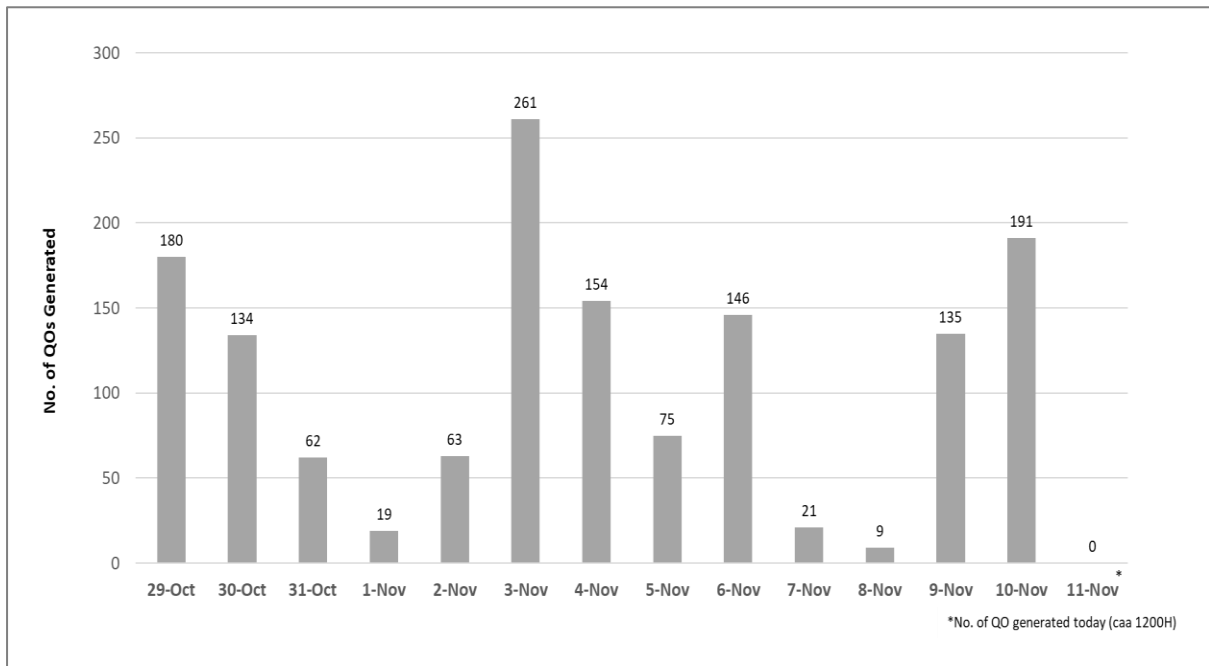


**Figure 3.2:** Active Stock Number of SHN (Home) and SHN (Hotel)



**(4) Number of Quarantine Orders (QO) Issued**

**Figure 4.1:** Daily Number of QOs Issued



**Figure 4.2:** Active Number of Persons Under Quarantine (PUQs)

