



	E Week 40			Cumulative first 40 Week		
	2023*	2022	Median 2018 -2022	2023	2022	Median 2018 -2022
FOOD/WATER-BORNE DISEASES						
Acute Hepatitis A	0	0	0	34	14	14
Acute Hepatitis E	0	0	0	41	26	37
Campylobacteriosis	6	6	8	334	487	367
Cholera	0	0	0	0	7	2
Paratyphoid	0	0	0	8	7	9
Polioyelitis	0	0	0	0	0	0
Salmonellosis	19	27	31	983	1060	1213
Typhoid	2	0	0	49	61	31
VECTOR-BORNE DISEASES						
Chikungunya Fever	1	1	0	9	19	12
Dengue Fever	267	397	243	7664	28468	12528
Dengue Haemorrhagic Fever	1	0	0	7	38	38
Japanese Encephalitis	0	0	0	0	0	7
Leptospirosis	2	1	1	50	37	23
Malaria	1	0	0	18	11	13
Murine Typhus	4	0	0	12	7	7
Nipah Virus Infection	0	0	0	0	0	0
Plague	0	0	0	0	0	0
Yellow Fever	0	0	0	0	0	0
Zika Virus Infection	0	0	0	26	1	1
AIR/DROPLET-BORNE DISEASES						
Avian Influenza	0	0	0	0	0	0
Diphtheria	0	0	0	0	0	0
Ebola Virus Disease	0	0	0	0	0	0
<i>Haemophilus influenzae</i> type b	0	1	0	0	2	2
Legionellosis	0	0	0	13	20	16
Measles	0	0	0	6	2	10
Melioidosis	1	0	0	30	22	25
Meningococcal Disease	0	0	0	3	2	6
Middle East Respiratory Syndrome [^]	0	0	0	0	0	0
Mpox [#]	2	0	NA	14	19	NA
Mumps	3	4	5	133	132	215
Pertussis	1	0	0	14	0	11
Pneumococcal Disease (Invasive)	5	1	2	107	39	39
Rubella	0	0	0	0	0	0
Severe Acute Respiratory Syndrome	0	0	0	0	0	0
Tetanus	0	0	0	1	0	0
OTHER DISEASES						
Acute Hepatitis B	1	0	1	27	25	31
Acute Hepatitis C	1	1	0	13	15	13
Botulism	0	0	0	0	0	0
POLYCLINIC ATTENDANCES - AVERAGE DAILY NUMBER						
Acute Upper Respiratory Infections	2480	2865	2619			NA
Acute Conjunctivitis	65	46	46			NA
Acute Diarrhoea	378	340	340			NA
Chickenpox	3	3	5			NA
Hand, Foot And Mouth Disease	15	21	NA			NA
HIV/STI/TB NOTIFICATIONS						
	2023	AUGUST		Cumulative 2023		
HIV/AIDS	11			136		
Legally Notifiable STIs	247			2467		
Tuberculosis	126			829		

* Provisional figures

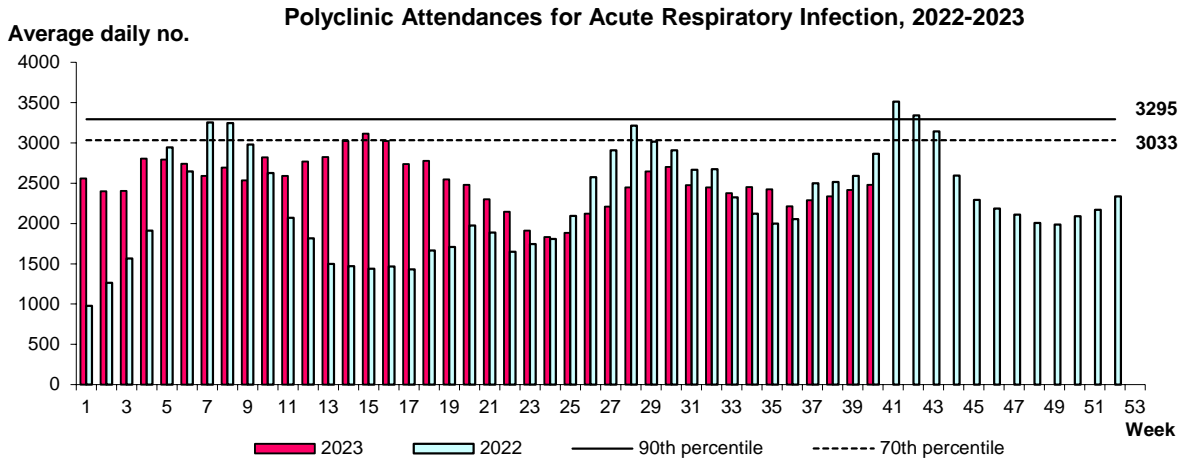
Added to the list of notifiable diseases as of 30 Jun 2022.

[^] With effect from E-week 27, 2023, only confirmed cases of MERS will be reported, instead of the number of persons tested.

Influenza Situation in Singapore 2023

Influenza indicators for E-week 40 (1 - 7 Oct 2023) are as follows:

The average daily number of patients seeking treatment in the polyclinics for ARI is 2480 (over 5.5 working days) in E-week 40.

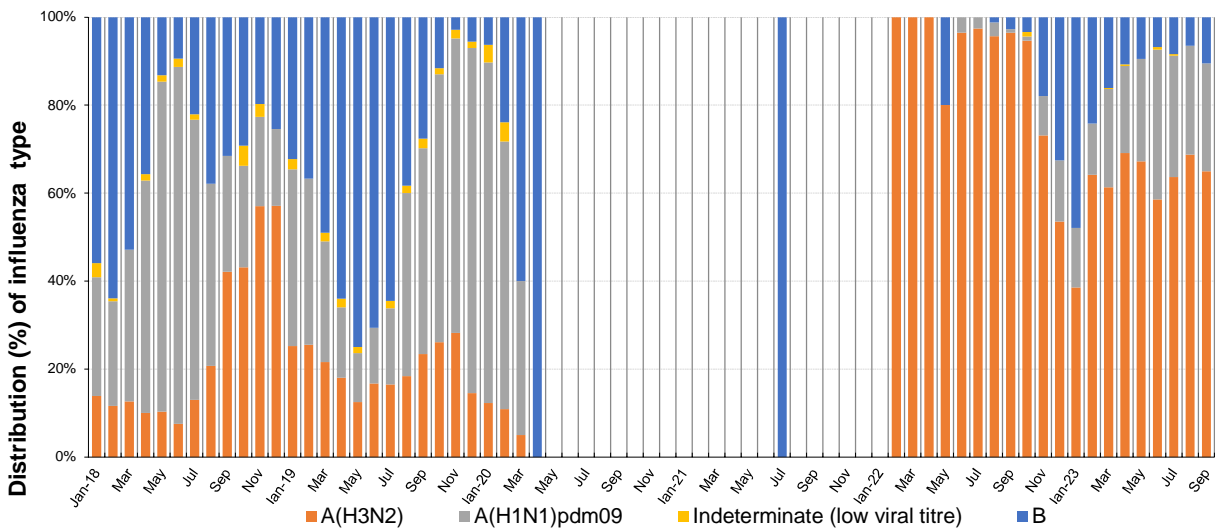


The proportion of patients with influenza-like illness (ILI) among the polyclinic attendances for ARI is 0.4%.

The overall positivity rate for influenza among ILI samples (n= 1303) in the community was 20.9% in the past 4 weeks.

Of the 294 specimens tested positive for influenza in Sep 2023, 191 were positive for Influenza A(H3N2) (65%), 72 were positive for Influenza A(pH1N1) (24%), and 31 were positive for Influenza B (11%).

Monthly Influenza Surveillance

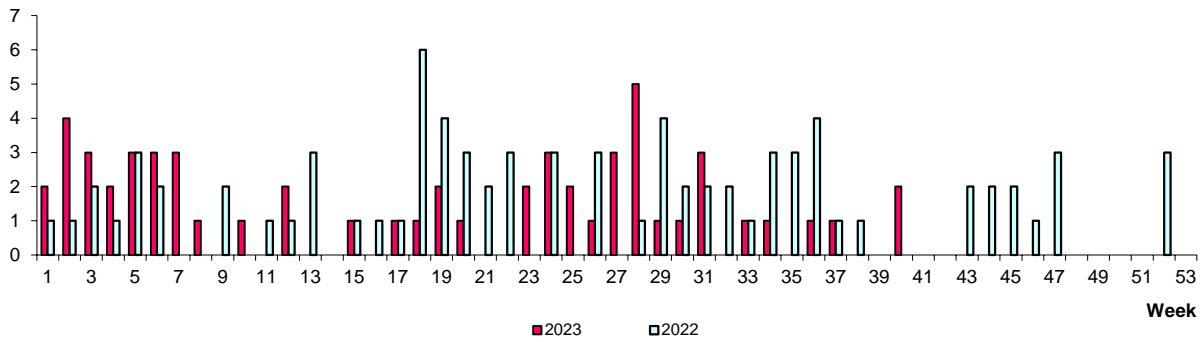


Based on influenza-like illness (ILI) samples from GPs and polyclinics

WEEKLY INCIDENCE OF FOOD/WATER-BORNE DISEASES, 2022-2023

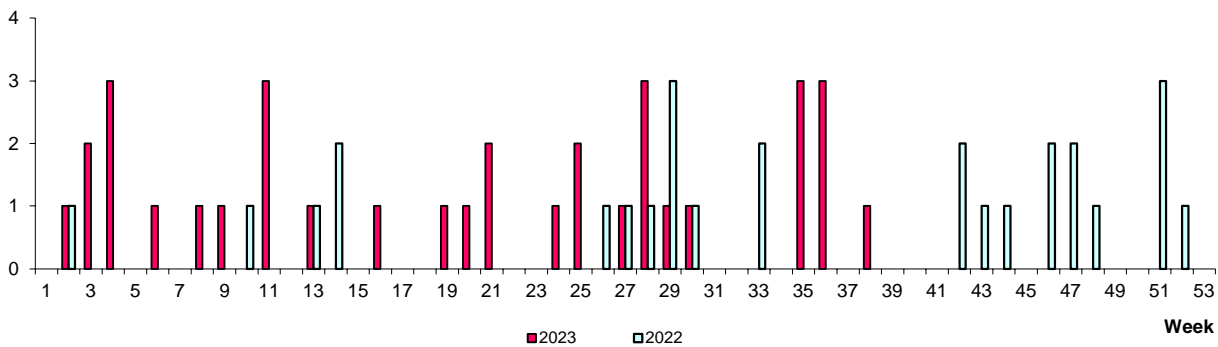
No. of Cases

Paratyphoid/Typhoid



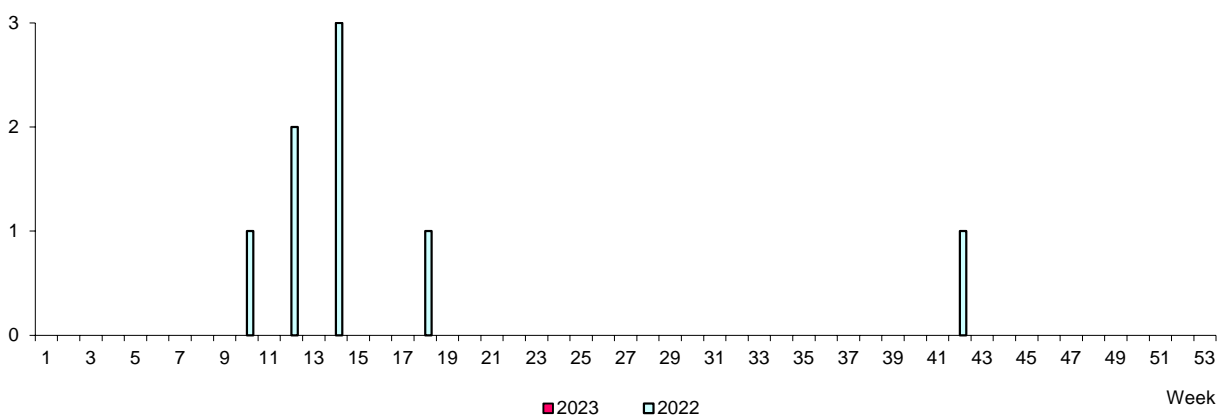
No. of Cases

Acute Hepatitis A



No. of Cases

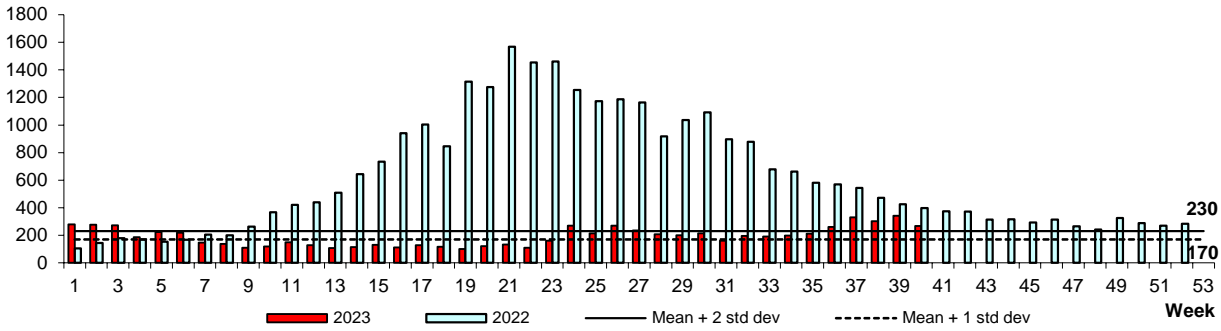
Cholera



WEEKLY INCIDENCE OF VECTOR-BORNE DISEASES, 2022-2023

Dengue Fever/Dengue Haemorrhagic Fever

No. of Cases



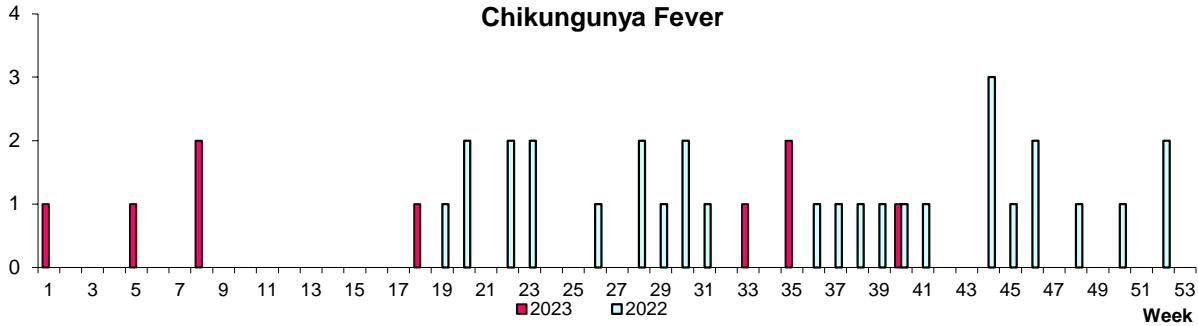
The number of dengue notifications was 268 in E-week 40.

The number of hospital admissions increased to 50 in E-week 40, compared to 44 in E-week 39.

Preliminary results of all positive dengue samples serotyped in Sep 2023 showed DEN-1, DEN-2, DEN-3 and DEN-4 at 13.7%, 67.9%, 7.1%, 11.3% respectively.

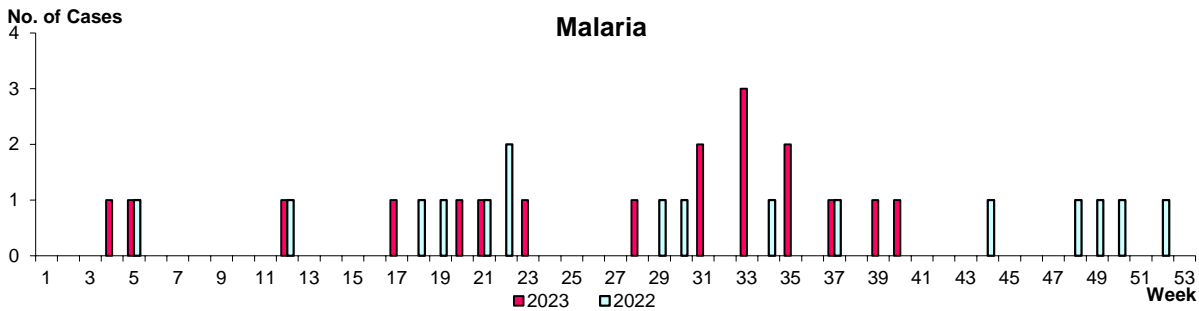
No. of Cases

Chikungunya Fever



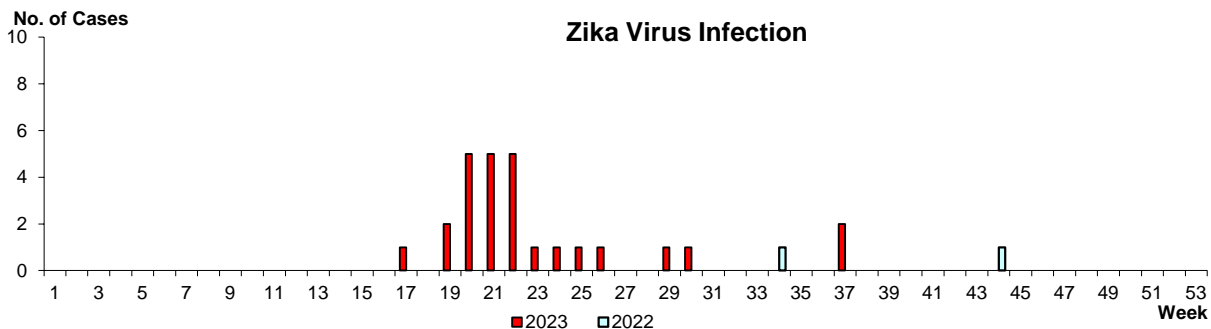
No. of Cases

Malaria

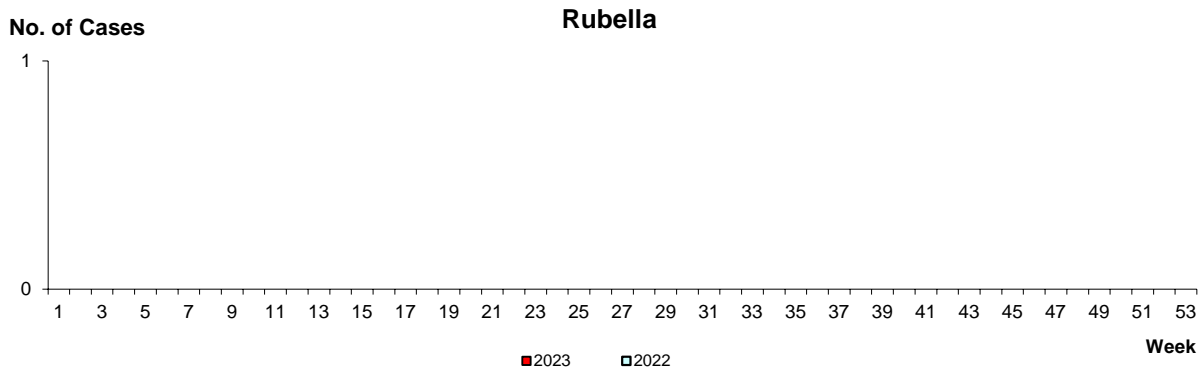
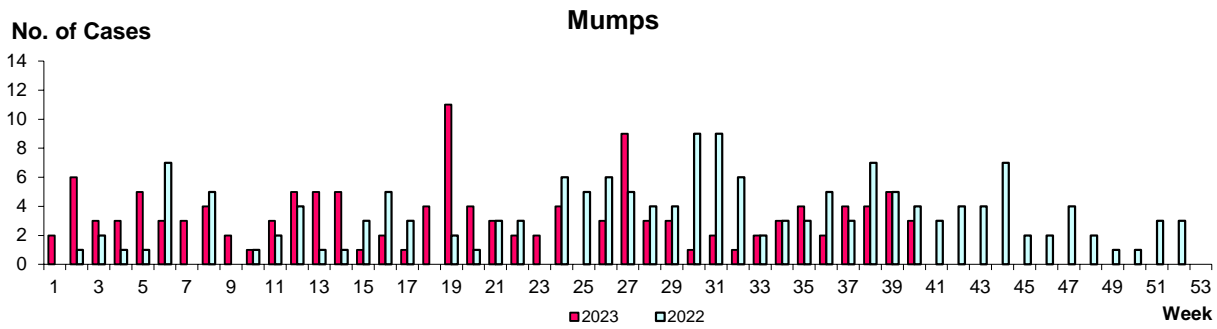
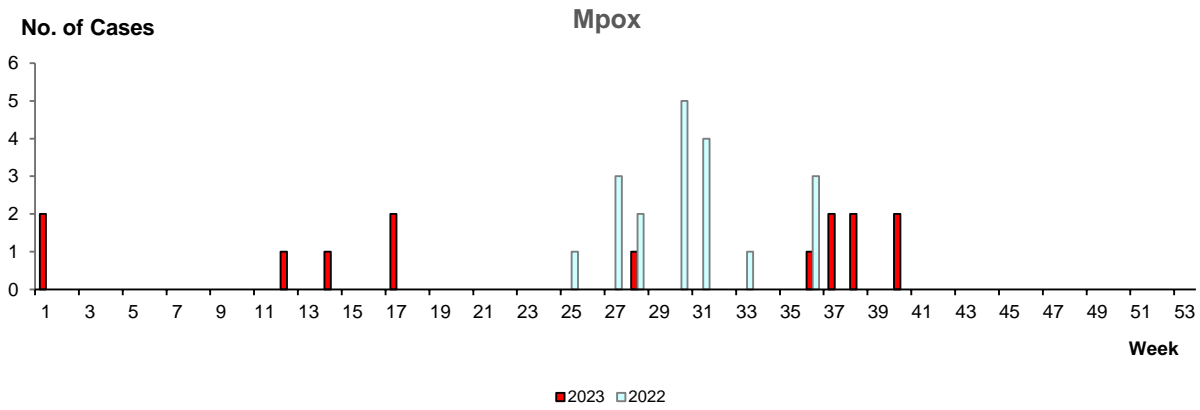
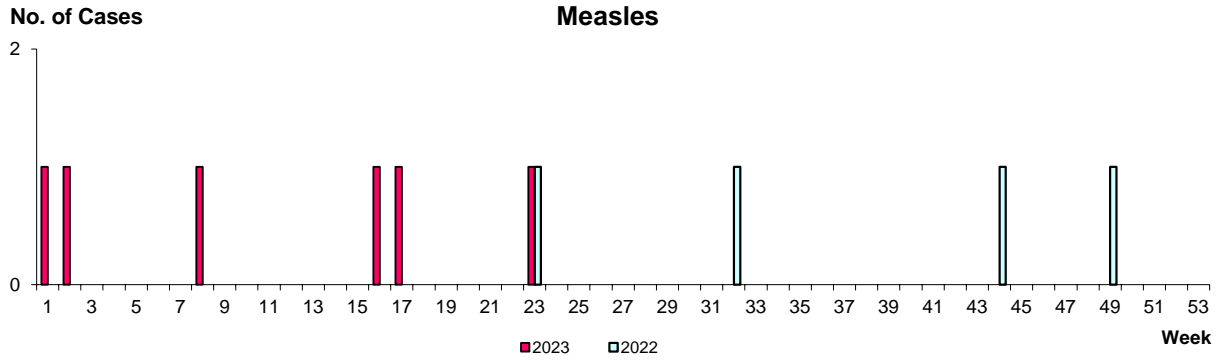


No. of Cases

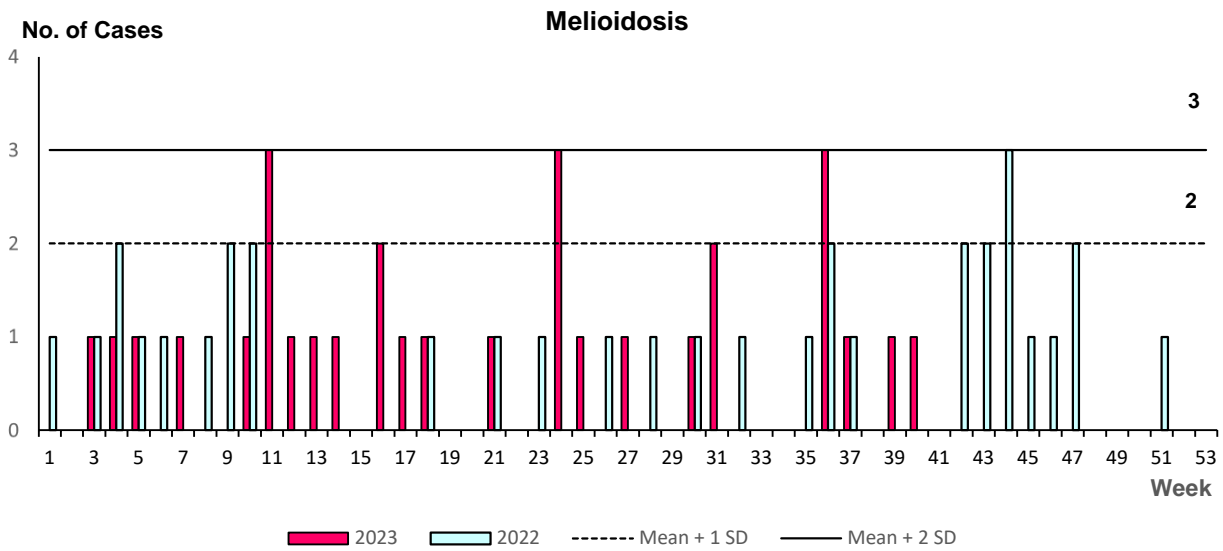
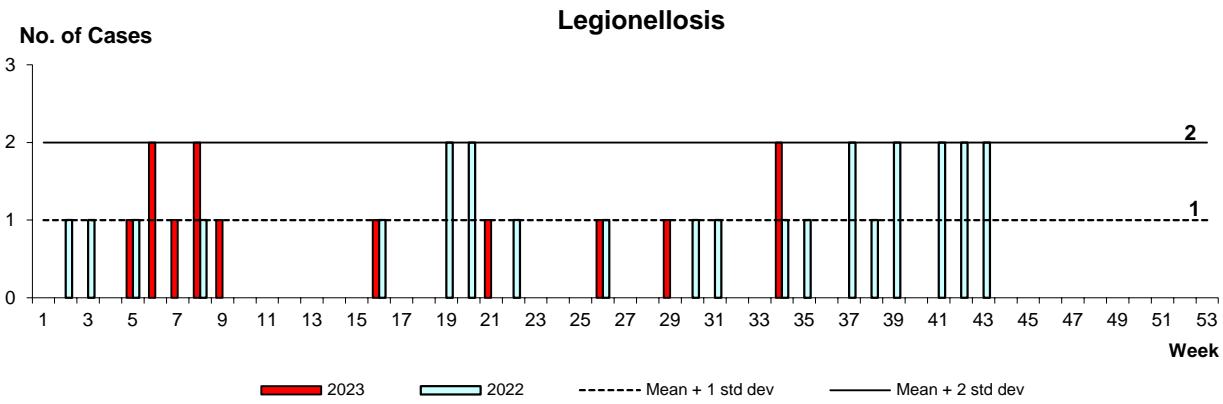
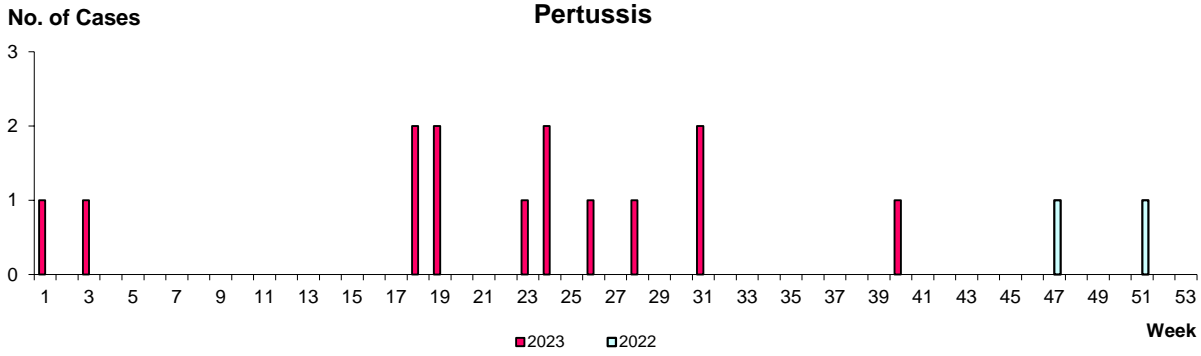
Zika Virus Infection



WEEKLY INCIDENCE OF AIR/DROPLET-BORNE DISEASES, 2022-2023



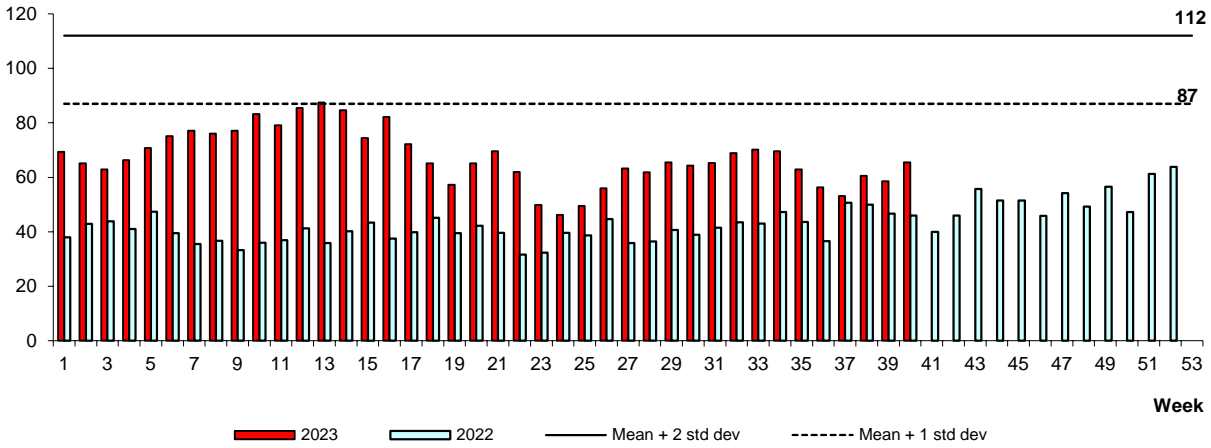
WEEKLY INCIDENCE OF AIR/DROPLET-BORNE DISEASES, 2022-2023



POLYCLINIC ATTENDANCES, 2022-2023

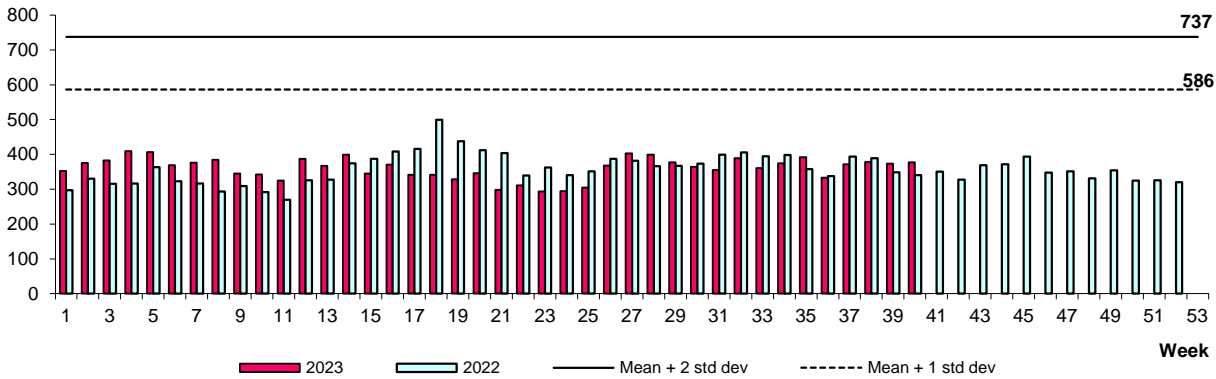
Conjunctivitis

Average daily no.



Diarrhoeal Illness

Average daily no.



Hand, Foot & Mouth Disease

Average daily no.

