



WEEKLY INFECTIOUS DISEASE BULLETIN
EPIDEMIOLOGICAL WEEK 35 26 Aug - 1 Sep 2018

	E Week 35			Cumulative first		35 Weeks
	2018*	2017	Median 2013 -2017	2018	2017	Median 2013 -2017
FOOD/WATER-BORNE DISEASES						
Acute Hepatitis A	2	0	1	53	57	56
Acute Hepatitis E	0	3	0	39	51	46
Campylobacteriosis	9	13	11	268	303	295
Cholera	0	0	0	2	1	1
Paratyphoid	0	0	0	12	14	16
Poliomyelitis	0	0	0	0	0	0
Salmonellosis	23	39	37	1070	1376	1321
Typhoid	1	1	1	28	45	45
VECTOR-BORNE DISEASES						
Chikungunya Fever	0	0	1	6	19	26
Dengue Fever	76	33	308	1855	1908	11285
Dengue Haemorrhagic Fever	0	0	0	20	12	17
Japanese Encephalitis [^]	0	0	NA	0	0	NA
Leptospirosis [^]	0	0	NA	0	36	NA
Malaria	0	3	2	21	25	33
Murine Typhus [^]	0	0	NA	1	0	NA
Nipah virus infection	0	0	0	0	0	0
Plague	0	0	0	0	0	0
Yellow Fever	0	0	0	0	0	0
Zika Virus Infection	0	1	NA	1	65	NA
AIR/DROPLET-BORNE DISEASES						
Avian Influenza	0	0	NA	0	0	NA
Diphtheria	0	0	0	0	1	0
Ebola Virus Disease	0	0	NA	0	0	NA
<i>Haemophilus influenzae</i> type b	0	0	0	3	6	5
Hand, Foot And Mouth Disease	681	760	761	31015	24250	19927
Legionellosis	1	0	0	13	12	12
Measles	2	1	2	29	53	53
Melioidosis	1	2	0	20	35	30
Meningococcal Disease	0	0	0	6	5	4
Mumps	9	12	12	351	357	341
Pertussis	0	5	1	81	44	35
Pneumococcal Disease (invasive)	4	4	3	89	114	100
Rubella	1	0	0	8	12	14
Severe acute respiratory syndrome	0	0	0	0	0	0
Tetanus [^]	0	0	0	1	0	
OTHER DISEASES						
Acute hepatitis B	0	1	1	32	26	35
Acute hepatitis C	0	0	0	10	11	8
Botulism [^]	0	0	NA	1	0	NA
MERS-CoV						
Suspect cases tested	2	NA	NA	104	85	NA
Other patients tested	1	NA	NA	52	72	NA
POLYCLINIC ATTENDANCES - AVERAGE DAILY NUMBER						
Acute upper respiratory infections	2519	2502	2502			NA
Acute conjunctivitis	76	81	82			NA
Acute Diarrhoea	566	481	501			NA
Chickenpox	10	17	NA			NA
HIV/STI/TB NOTIFICATIONS						
	2018	Jul		Cumulative 2018		
HIV/AIDS		33		182		
Legally Notifiable STIs		945		5964		
Tuberculosis		143		940		

* Preliminary figures, subject to revision when more information is available.

[^] Added to the list of notifiable diseases as of 28 Sep 2016.

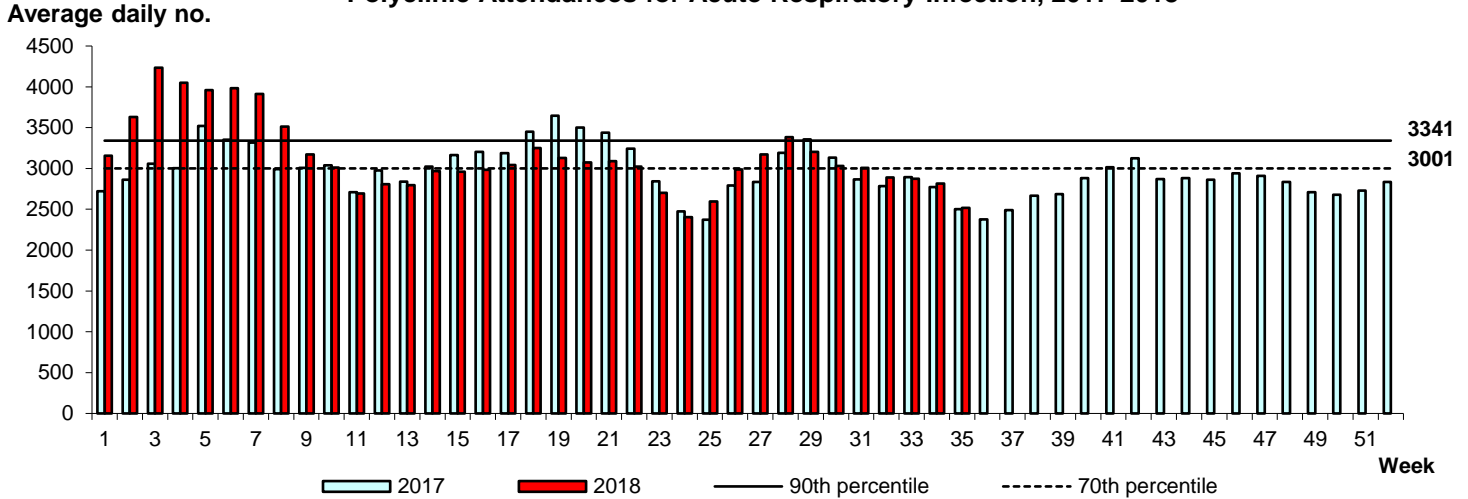
Updated case counts due to change in case definitions w.e.f. 1 Jan 2018

Influenza Situation in Singapore 2018

Influenza indicators for E-week 35 (26 Aug - 1 Sep 2018) are as follows:

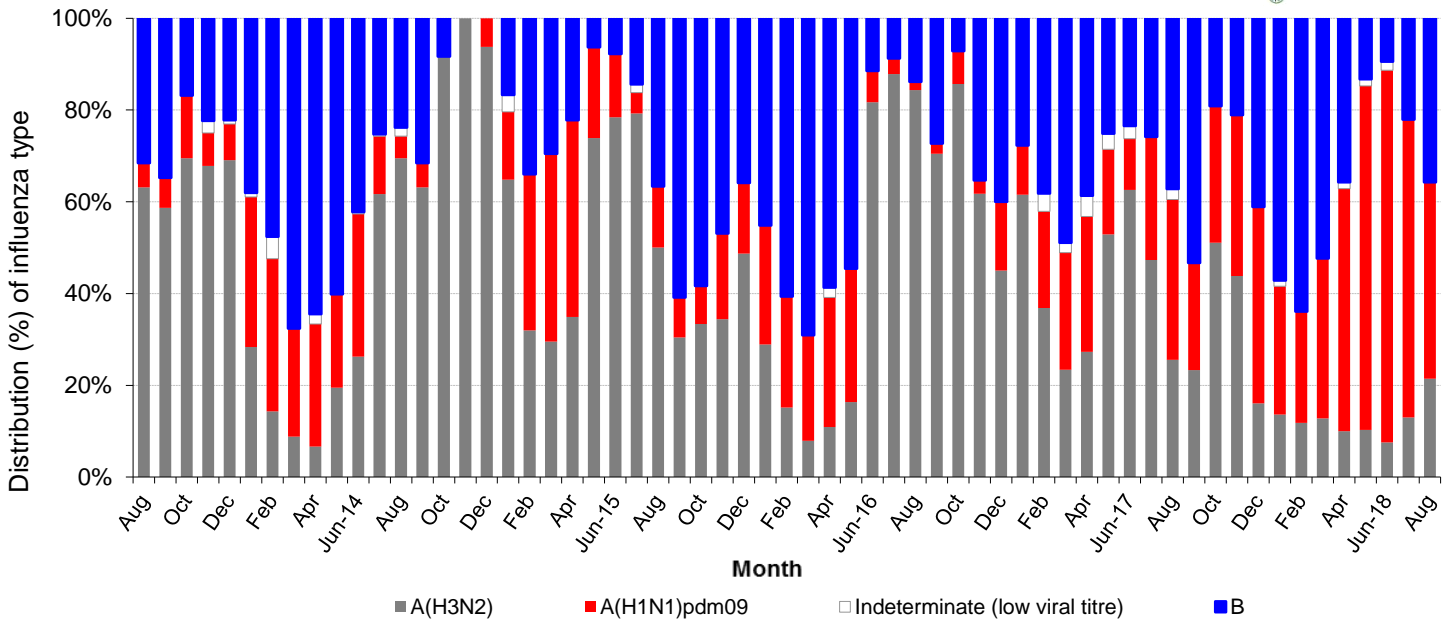
The average daily number of patients seeking treatment in the polyclinics for ARI decreased from 2,816 (over 4.5 working days) in E-week 34 to 2,519 (over 5.5 working days) in E-week 35.

Polyclinic Attendances for Acute Respiratory Infection, 2017-2018



The proportion of patients with influenza-like illness (ILI) among the polyclinic attendances for ARI is 1.6%. The overall positivity rate for influenza among ILI samples (n=138) in the community was 16.7% in the past 4 weeks. Of the specimens tested positive for influenza in Aug 2018, these were positive for influenza A(H1N1)pdm09 (42.9%), influenza B (35.7%) and influenza A(H3N2) (21.4%).

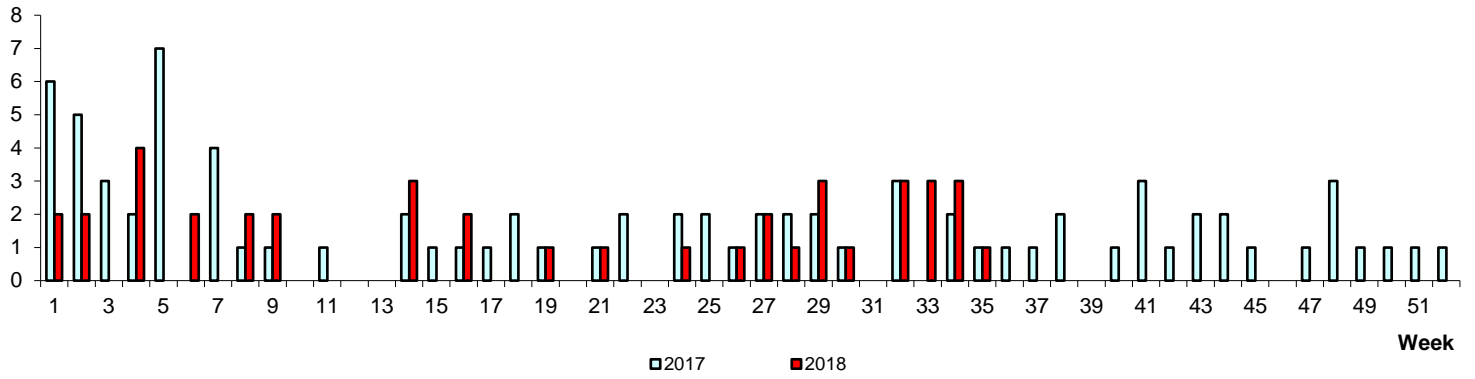
Monthly Influenza Surveillance



WEEKLY INCIDENCE OF FOOD/WATER-BORNE DISEASES, 2017-2018

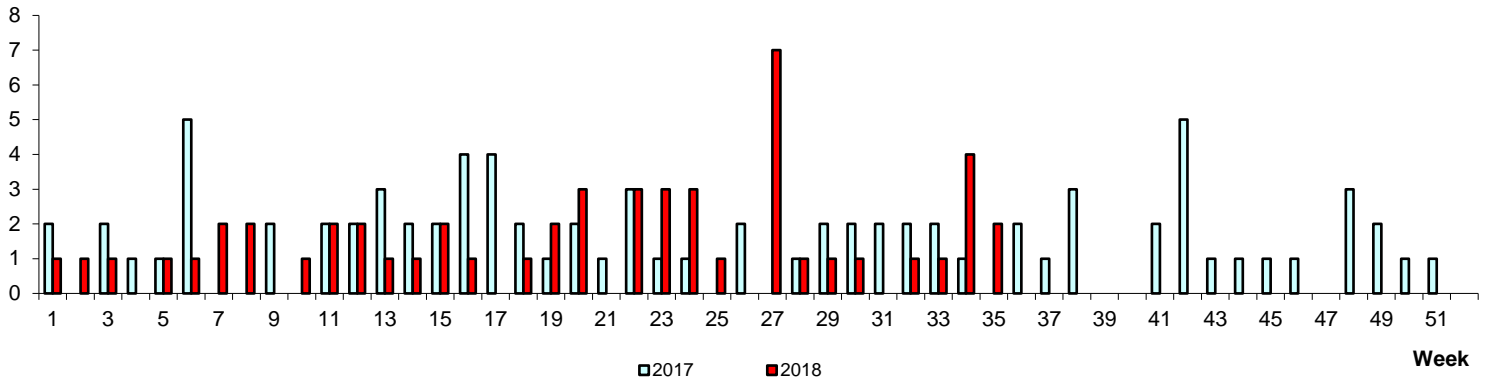
No. of Cases

Paratyphoid/Typhoid



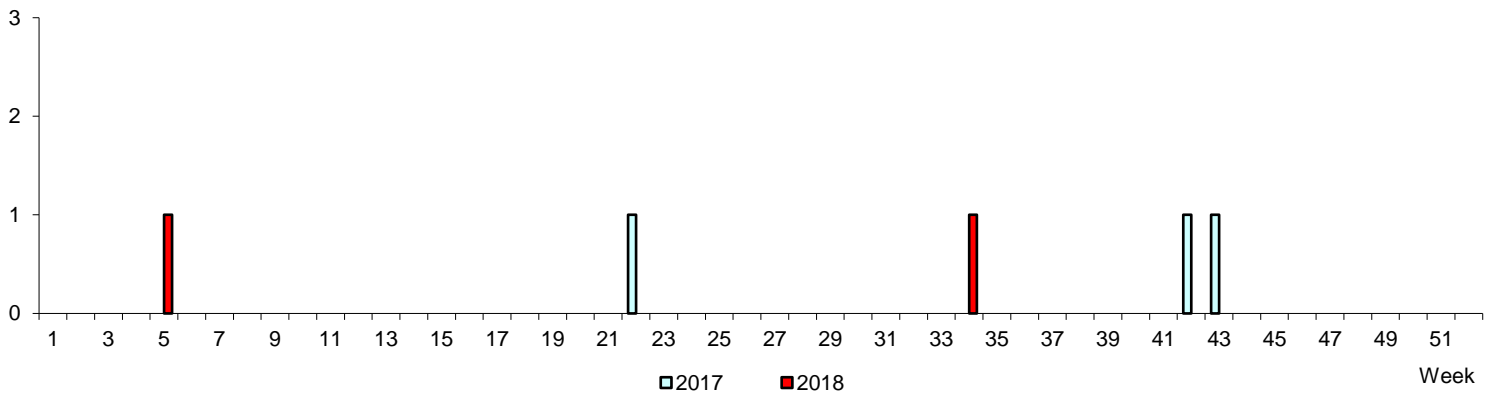
No. of Cases

Acute Hepatitis A



No. of Cases

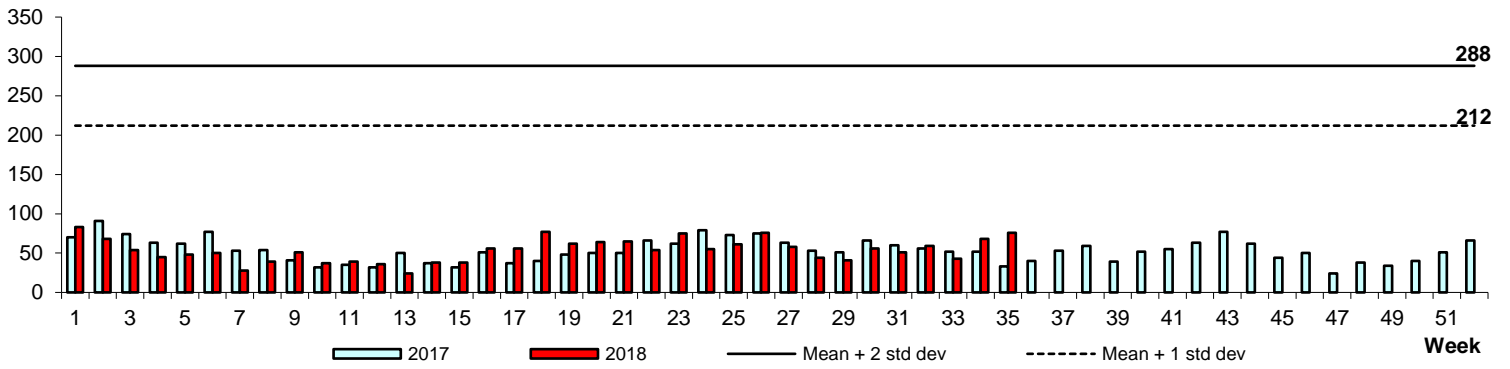
Cholera



WEEKLY INCIDENCE OF VECTOR-BORNE DISEASES, 2017-2018

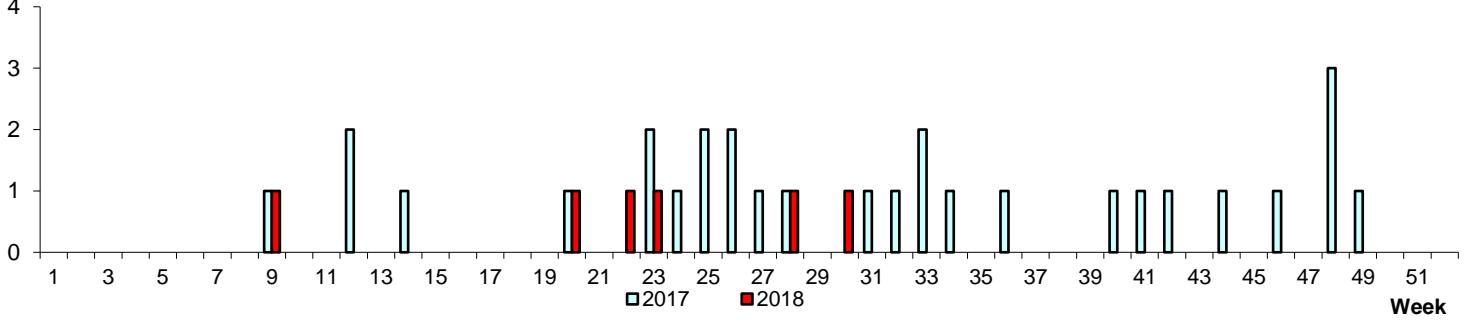
Dengue Fever/Dengue Haemorrhagic Fever

No. of Cases



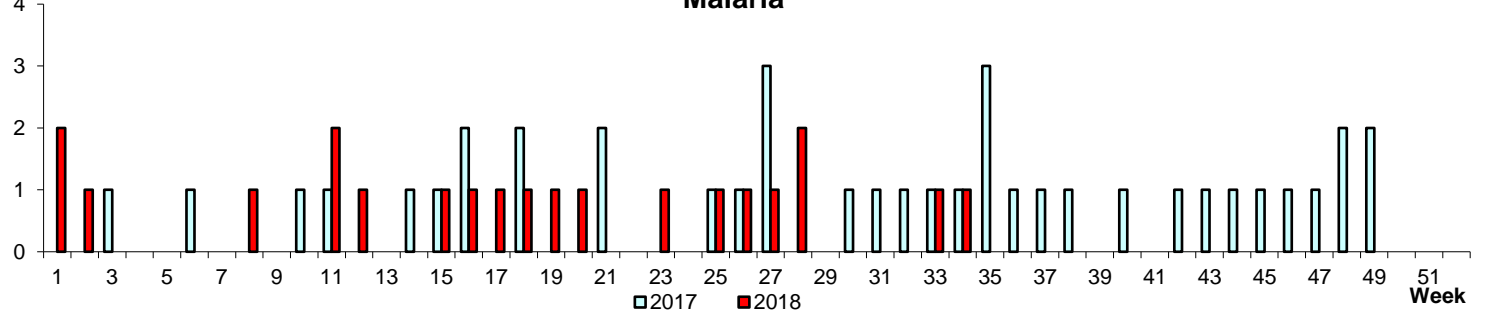
Chikungunya Fever

No. of Cases



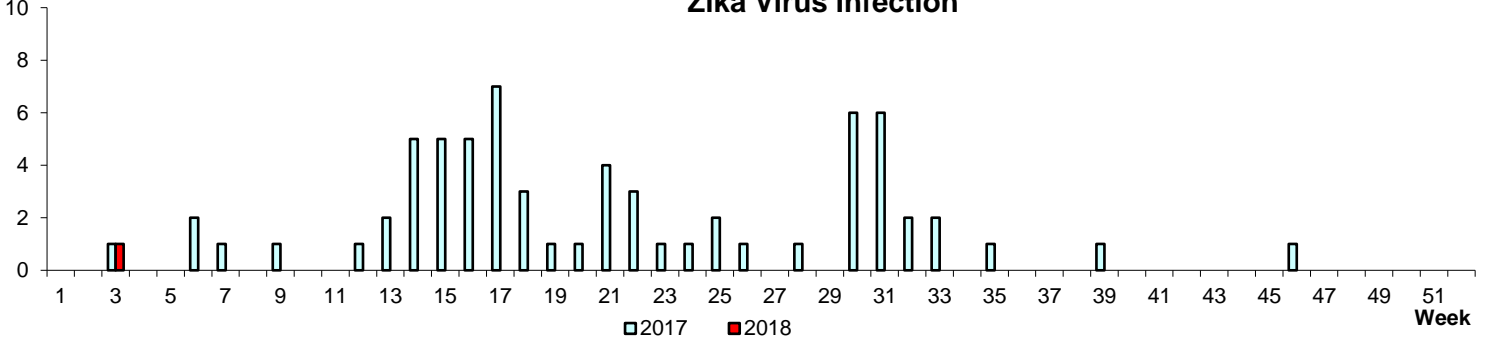
Malaria

No. of Cases



Zika Virus Infection

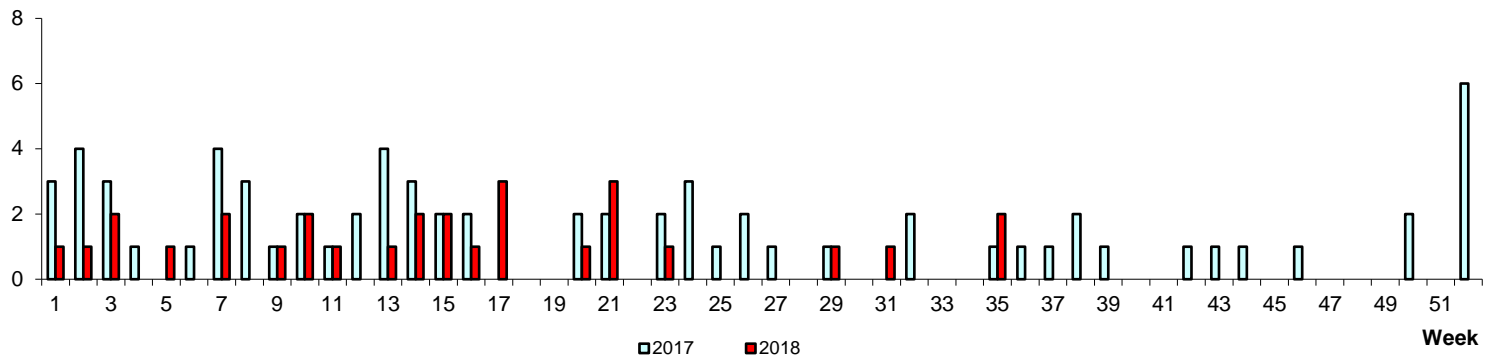
No. of Cases



WEEKLY INCIDENCE OF AIR/DROPLET-BORNE DISEASES, 2017-2018

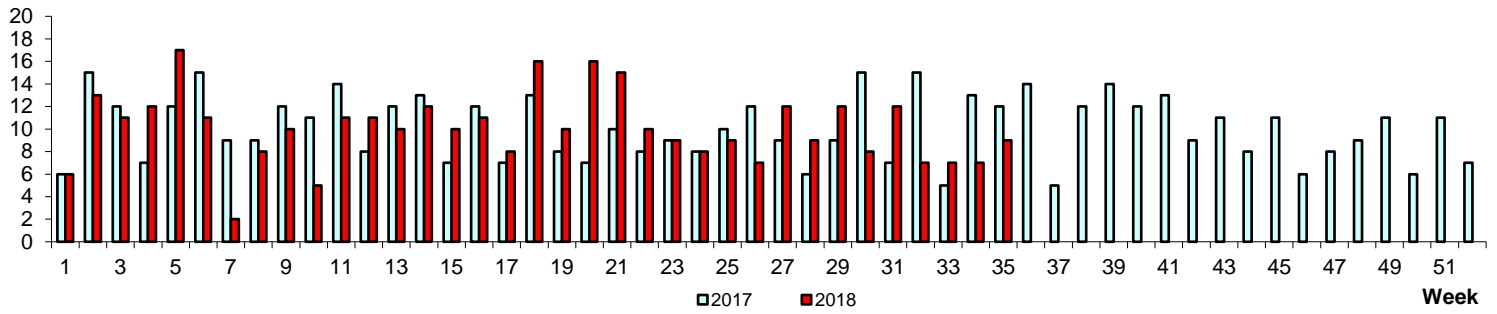
No. of Cases

Measles



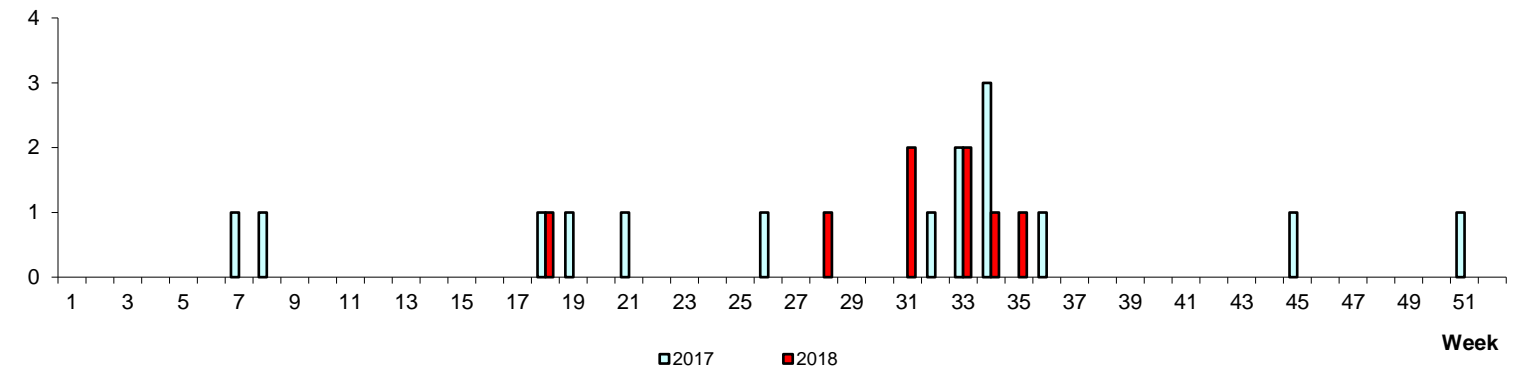
No. of Cases

Mumps



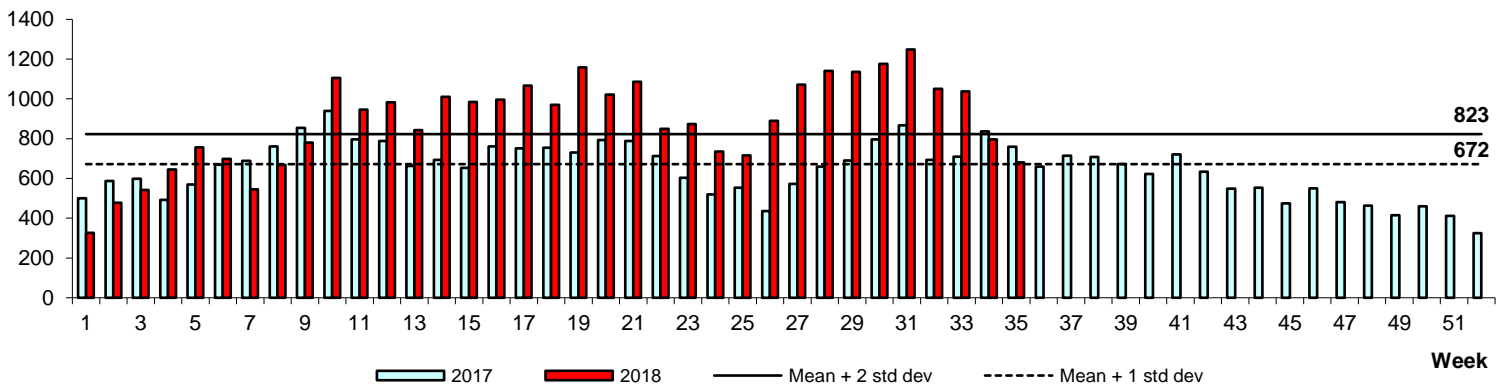
No. of Cases

Rubella



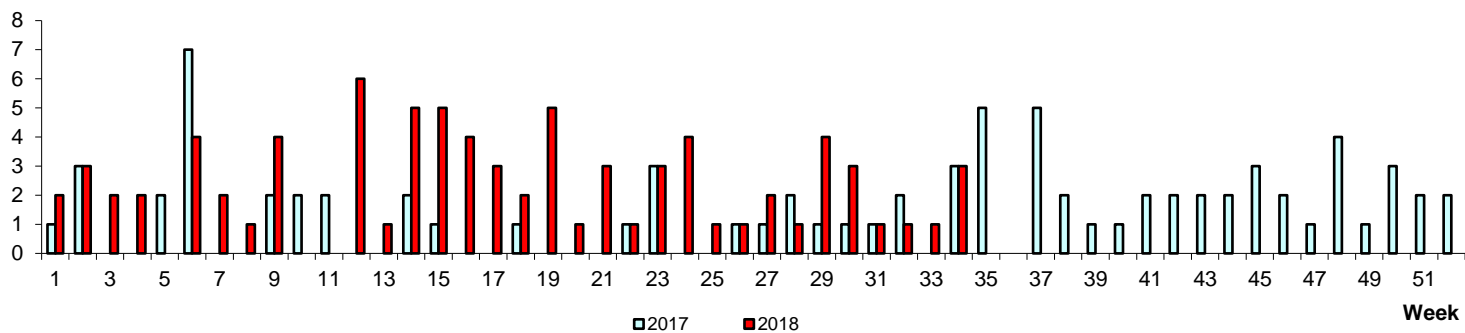
Hand, Foot & Mouth Disease

No. of Cases



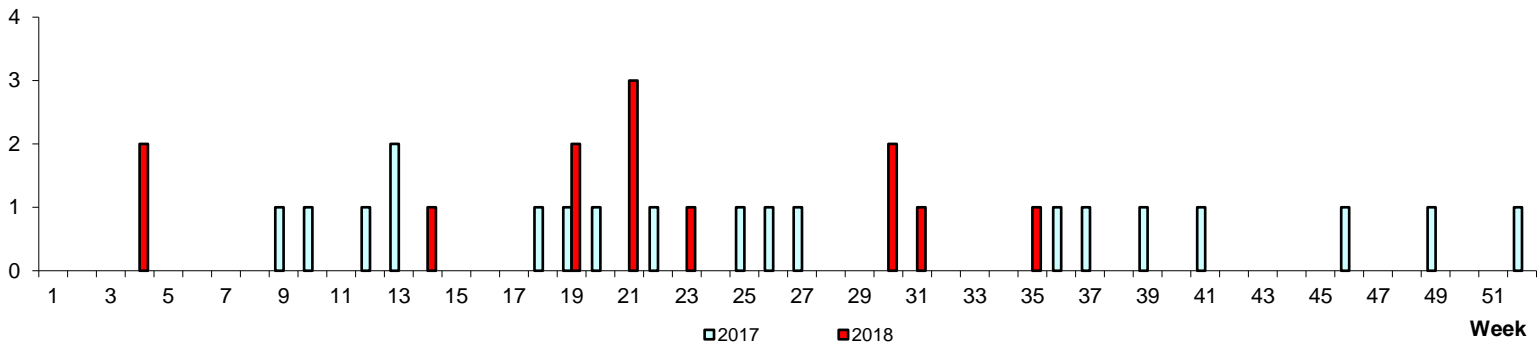
No. of Cases

Pertussis



No. of Cases

Legionellosis



POLYCLINIC ATTENDANCES, 2017-2018

