



WEEKLY INFECTIOUS DISEASE BULLETIN
EPIDEMIOLOGICAL WEEK 39 23 - 29 Sep 2018

| | E Week 39 | | | Cumulative first 39 Weeks | | |
|--|-----------|------|----------------------|---------------------------|-------|----------------------|
| | 2018* | 2017 | Median 2013 -2017 | 2018 | 2017 | Median 2013 -2017 |
| FOOD/WATER-BORNE DISEASES | | | | | | |
| Acute Hepatitis A | 1 | 0 | 0 | 56 | 63 | 62 |
| Acute Hepatitis E | 0 | 0 | 1 | 45 | 60 | 49 |
| Campylobacteriosis | 11 | 17 | 8 | 308 | 356 | 347 |
| Cholera | 0 | 0 | 0 | 2 | 1 | 1 |
| Paratyphoid | 1 | 0 | 0 | 13 | 16 | 18 |
| Poliomyelitis | 0 | 0 | 0 | 0 | 0 | 0 |
| Salmonellosis | 28 | 27 | 39 | 1201 | 1529 | 1472 |
| Typhoid | 1 | 0 | 0 | 31 | 47 | 47 |
| VECTOR-BORNE DISEASES | | | | | | |
| Chikungunya Fever | 0 | 0 | 1 | 6 | 20 | 31 |
| Dengue Fever | 40 | 39 | 257 | 2081 | 2098 | 12008 |
| Dengue Haemorrhagic Fever | 0 | 0 | 0 | 21 | 13 | 19 |
| Japanese Encephalitis [^] | 0 | 0 | NA | 0 | 0 | NA |
| Leptospirosis [^] | 0 | 1 | NA | 32 | 40 | NA |
| Malaria | 2 | 0 | 0 | 24 | 28 | 40 |
| Murine Typhus [^] | 0 | 0 | NA | 9 | 0 | NA |
| Nipah virus infection | 0 | 0 | 0 | 0 | 0 | 0 |
| Plague | 0 | 0 | 0 | 0 | 0 | 0 |
| Yellow Fever | 0 | 0 | 0 | 0 | 0 | 0 |
| Zika Virus Infection | 0 | 1 | NA | 1 | 66 | NA |
| AIR/DROPLET-BORNE DISEASES | | | | | | |
| Avian Influenza | 0 | 0 | NA | 0 | 0 | NA |
| Diphtheria | 0 | 0 | 0 | 0 | 2 | 0 |
| Ebola Virus Disease | 0 | 0 | NA | 0 | 0 | NA |
| <i>Haemophilus influenzae</i> type b | 0 | 0 | 0 | 3 | 6 | 5 |
| Hand, Foot And Mouth Disease | 622 | 672 | 672 | 33276 | 27004 | 21592 |
| Legionellosis | 2 | 1 | 0 | 16 | 15 | 15 |
| Measles | 0 | 1 | 2 | 29 | 58 | 58 |
| Melioidosis | 0 | 1 | 1 | 22 | 38 | 34 |
| Meningococcal Disease | 0 | 0 | 0 | 6 | 6 | 4 |
| Mumps | 8 | 14 | 12 | 381 | 402 | 395 |
| Pertussis | 2 | 1 | 1 | 85 | 52 | 41 |
| Pneumococcal Disease (invasive) | 2 | 4 | 1 | 100 | 125 | 112 |
| Rubella | 1 | 0 | 0 | 10 | 13 | 15 |
| Severe acute respiratory syndrome | 0 | 0 | 0 | 0 | 0 | 0 |
| Tetanus [^] | 0 | 0 | 0 | 1 | 0 | |
| OTHER DISEASES | | | | | | |
| Acute hepatitis B | 1 | 2 | 1 | 35 | 30 | 40 |
| Acute hepatitis C | 1 | 0 | 0 | 11 | 13 | 9 |
| Botulism [^] | 0 | 0 | NA | 1 | 0 | NA |
| MERS-CoV | | | | | | |
| Suspect cases tested | 2 | NA | NA | 128 | 100 | NA |
| Other patients tested | 2 | NA | NA | 69 | 85 | NA |
| POLYCLINIC ATTENDANCES - AVERAGE DAILY NUMBER | | | | | | |
| Acute upper respiratory infections | 2767 | 2686 | 2384 | | | NA |
| Acute conjunctivitis | 79 | 80 | 91 | | | NA |
| Acute Diarrhoea | 571 | 483 | 483 | | | NA |
| Chickenpox | 15 | 10 | NA | | | NA |
| HIV/STI/TB NOTIFICATIONS | | | | | | |
| HIV/AIDS | 2018 | Aug | | Cumulative 2018 | | |
| | 22 | | | 204 | | |
| Legally Notifiable STIs | 850 | | | 6814 | | |
| Tuberculosis | 161 | | | 1086 | | |

* Preliminary figures, subject to revision when more information is available.

[^] Added to the list of notifiable diseases as of 28 Sep 2016.

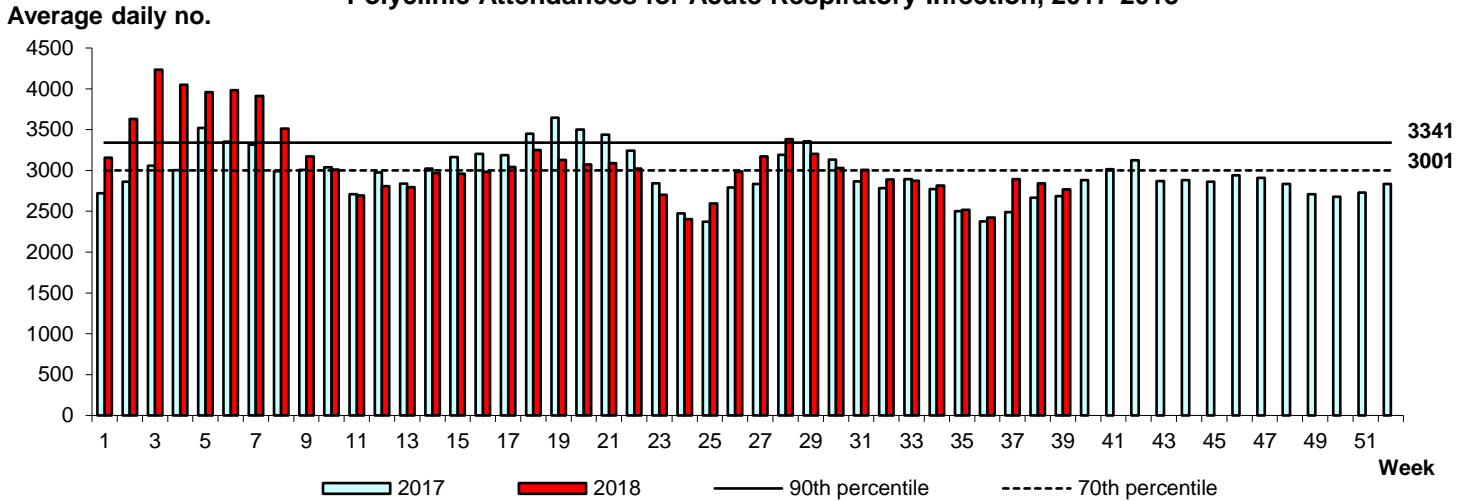
Updated case counts due to change in case definitions w.e.f. 1 Jan 2018

Influenza Situation in Singapore 2018

Influenza indicators for E-week 39 (23 - 29 Sep 2018) are as follows:

The average daily number of patients seeking treatment in the polyclinics for ARI is 2767 (over 5.5 working days) in E-week 39.

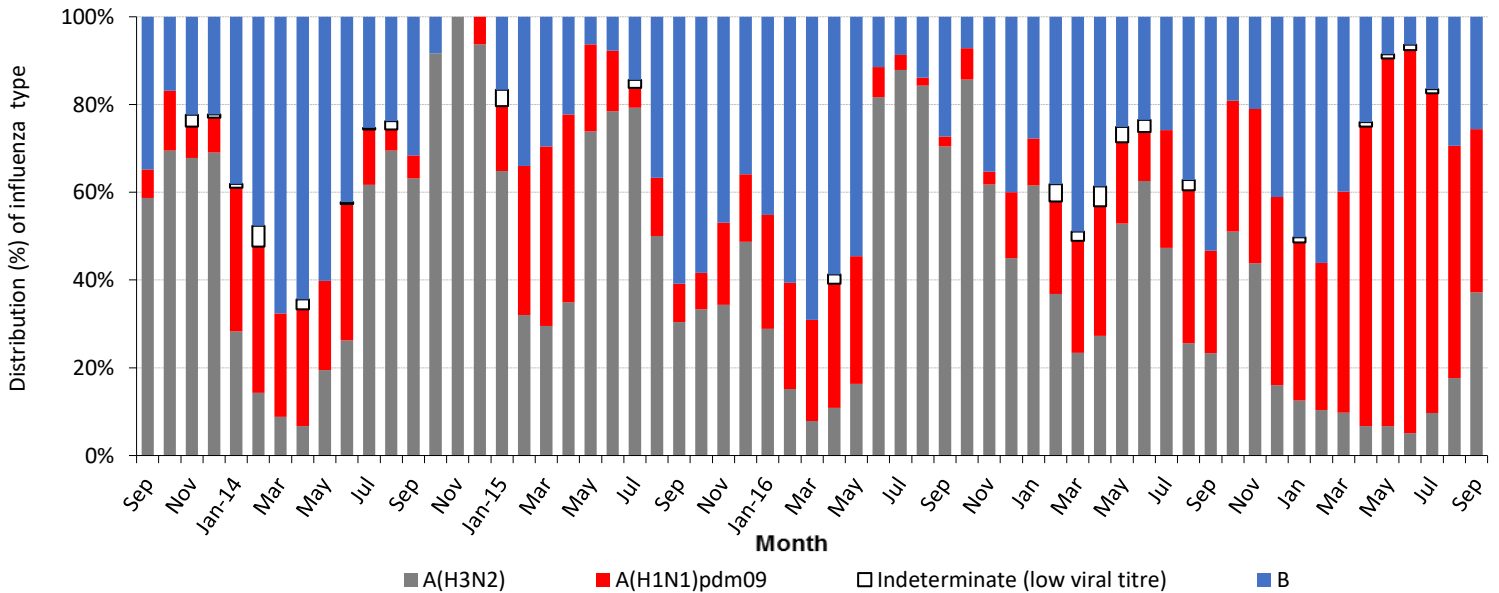
Polyclinic Attendances for Acute Respiratory Infection, 2017-2018



The proportion of patients with influenza-like illness (ILI) among the polyclinic attendances for ARI is 1.7%.

The overall positivity rate for influenza among ILI samples (n=186) in the community was 19.9% in the past 4 weeks. Of the specimens tested positive for influenza in Sep 2018, these were positive for influenza A(H1N1) pdm09 (37.2%), influenza A (H3N2) (37.2%) and influenza B (25.6%)

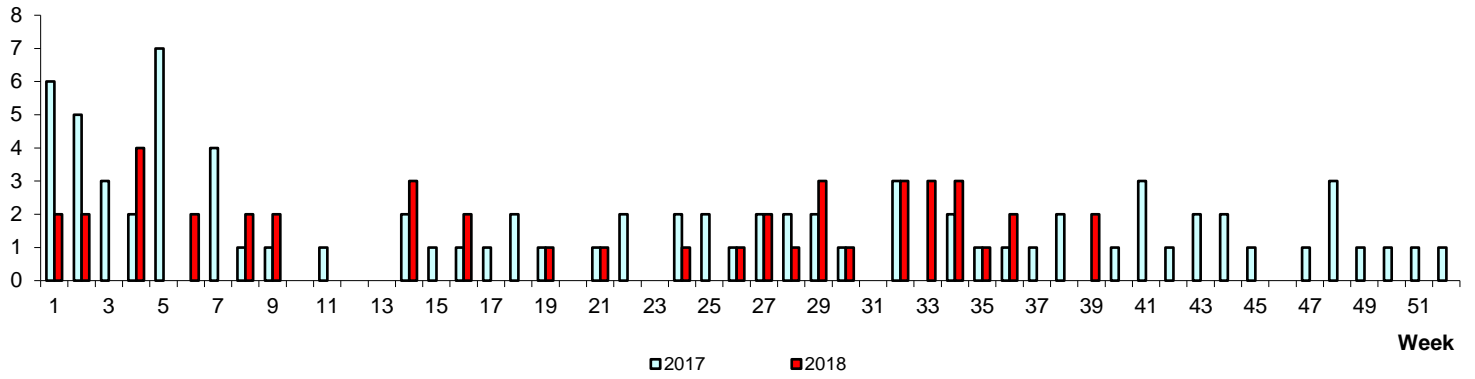
Monthly Influenza Surveillance



WEEKLY INCIDENCE OF FOOD/WATER-BORNE DISEASES, 2017-2018

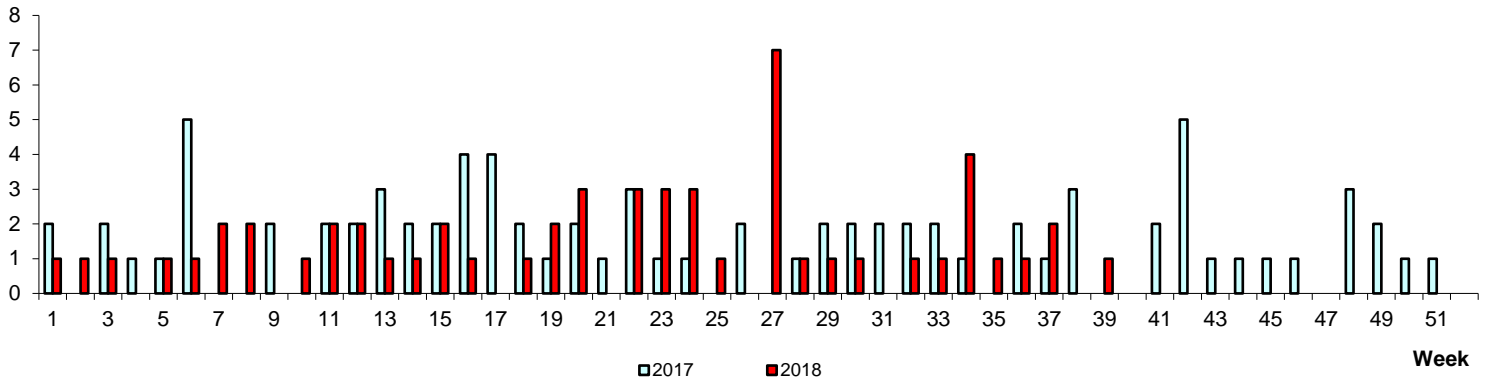
No. of Cases

Paratyphoid/Typhoid



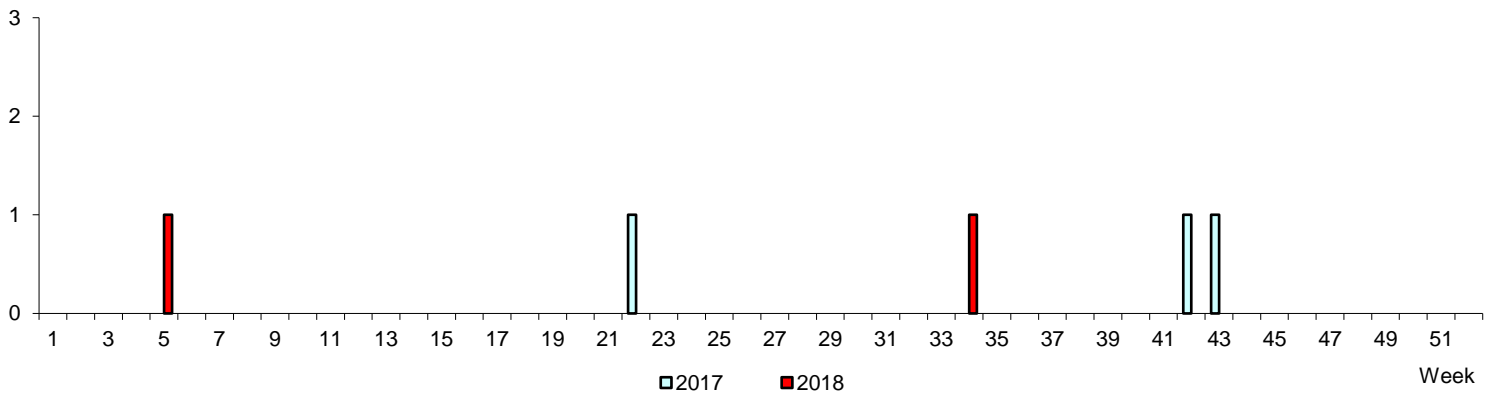
No. of Cases

Acute Hepatitis A



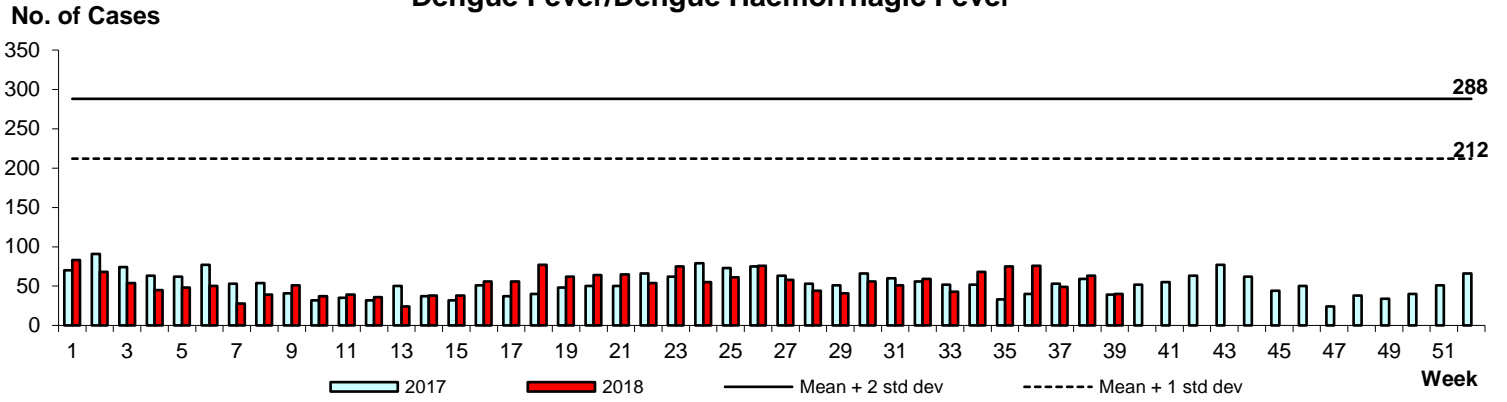
No. of Cases

Cholera

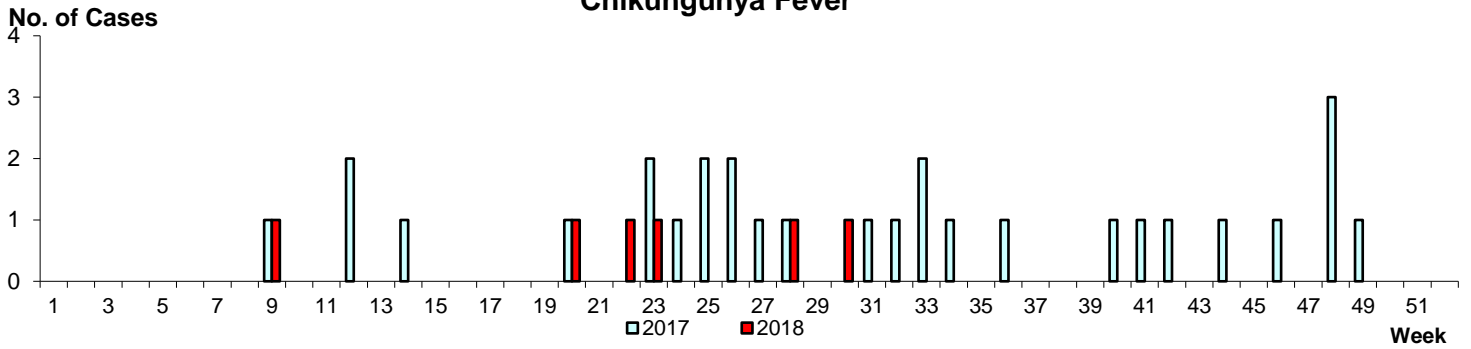


WEEKLY INCIDENCE OF VECTOR-BORNE DISEASES, 2017-2018

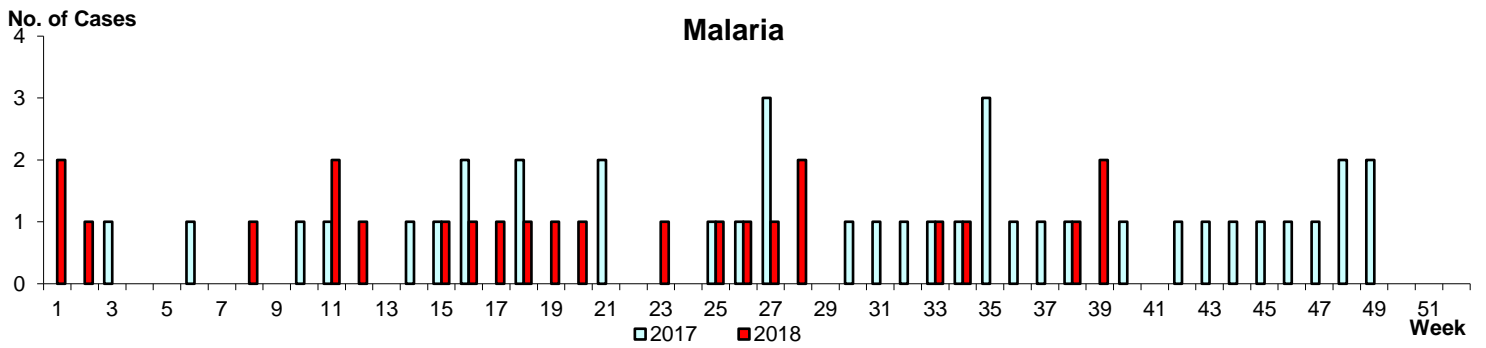
Dengue Fever/Dengue Haemorrhagic Fever



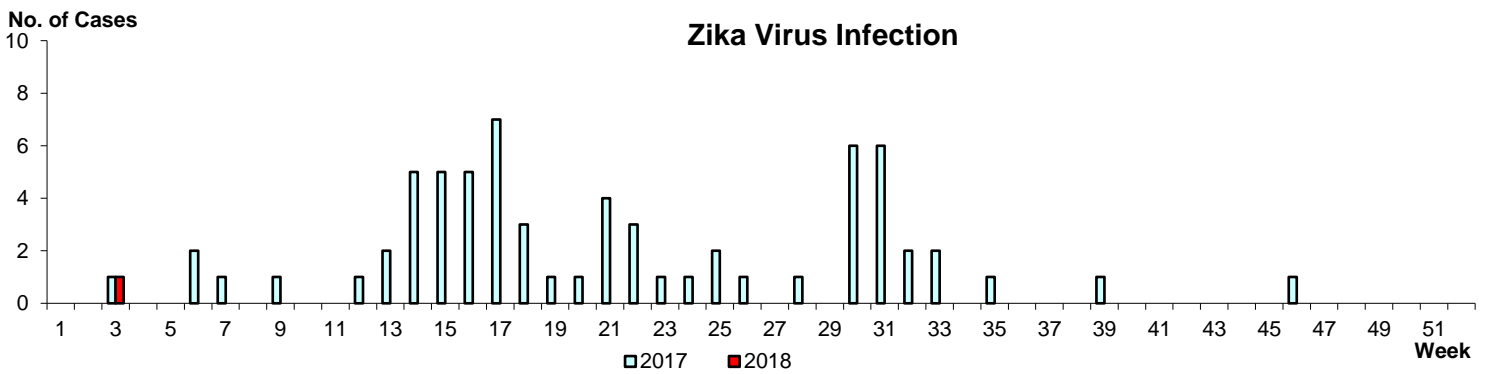
Chikungunya Fever



Malaria



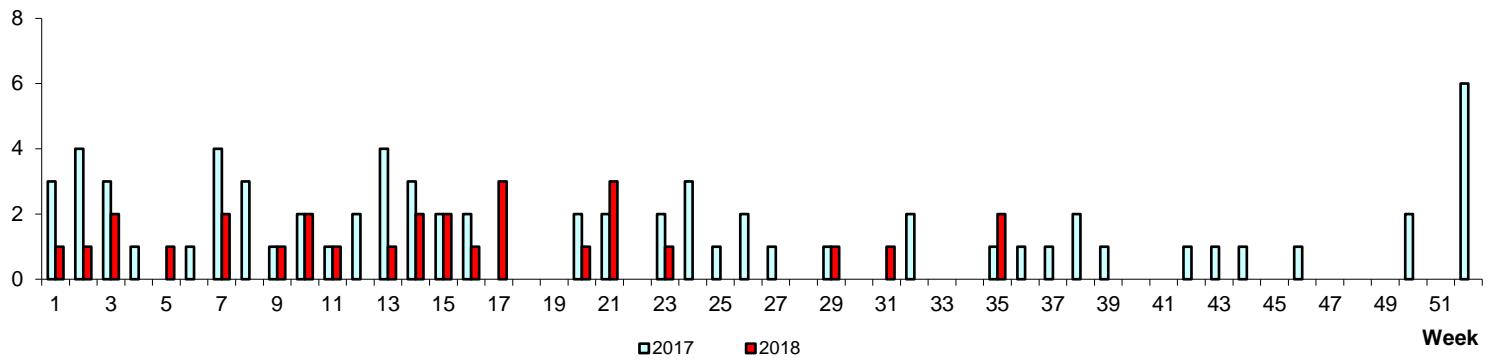
Zika Virus Infection



WEEKLY INCIDENCE OF AIR/DROPLET-BORNE DISEASES, 2017-2018

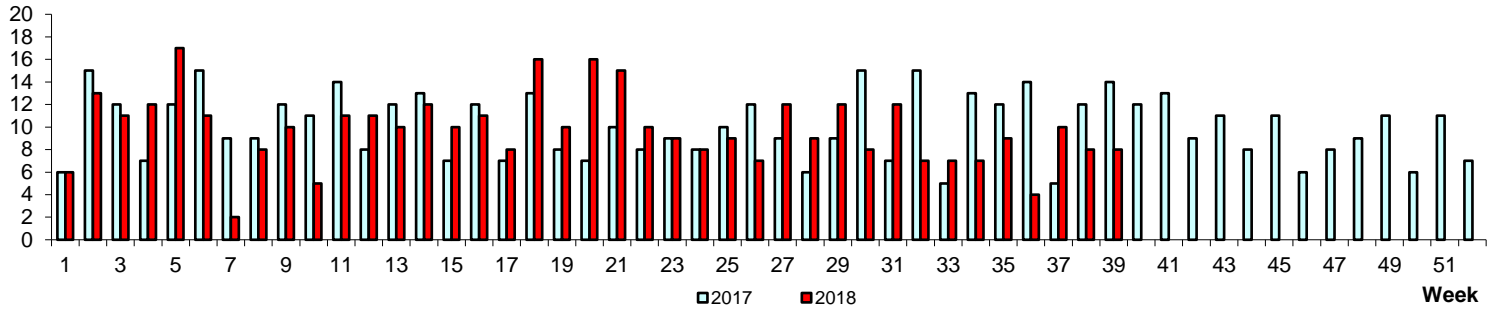
No. of Cases

Measles



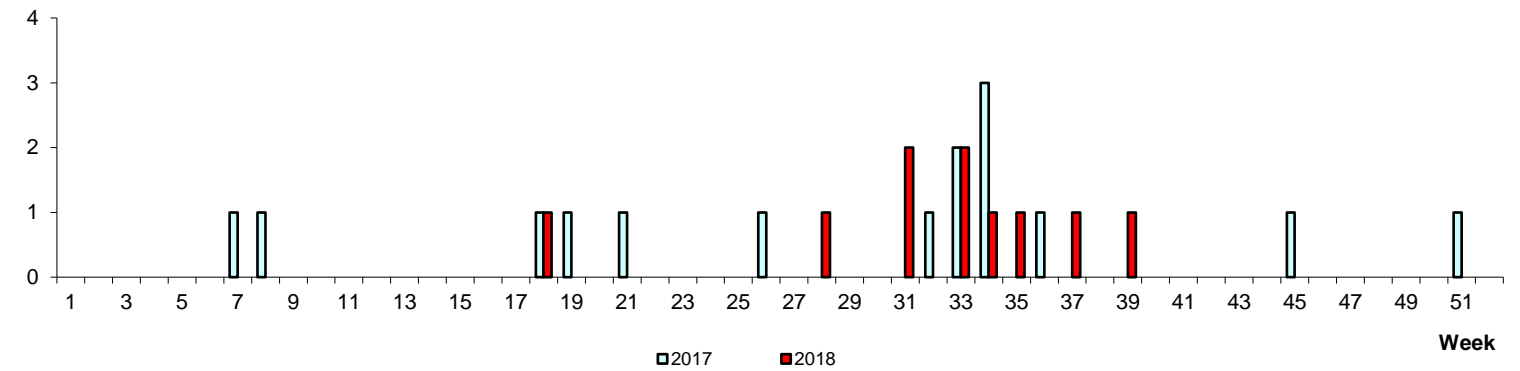
No. of Cases

Mumps



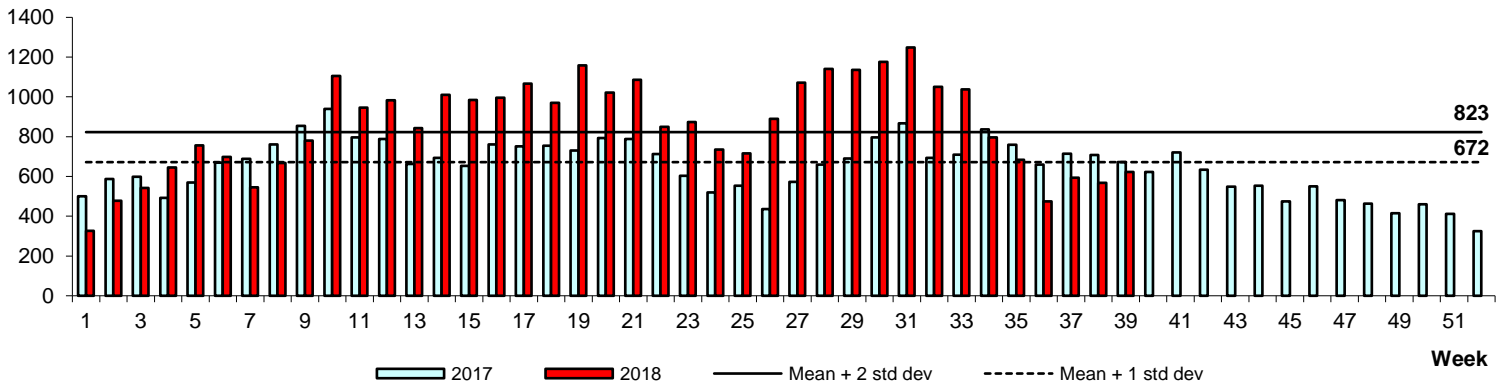
No. of Cases

Rubella



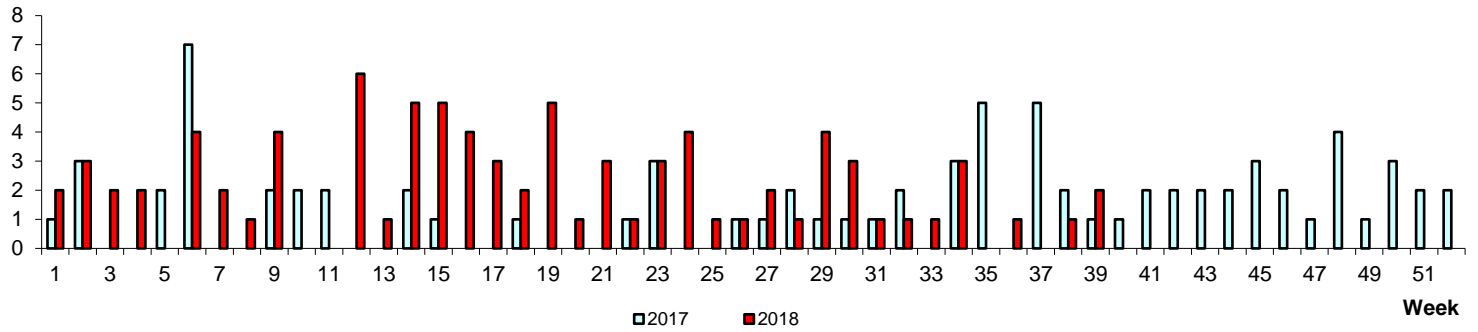
Hand, Foot & Mouth Disease

No. of Cases



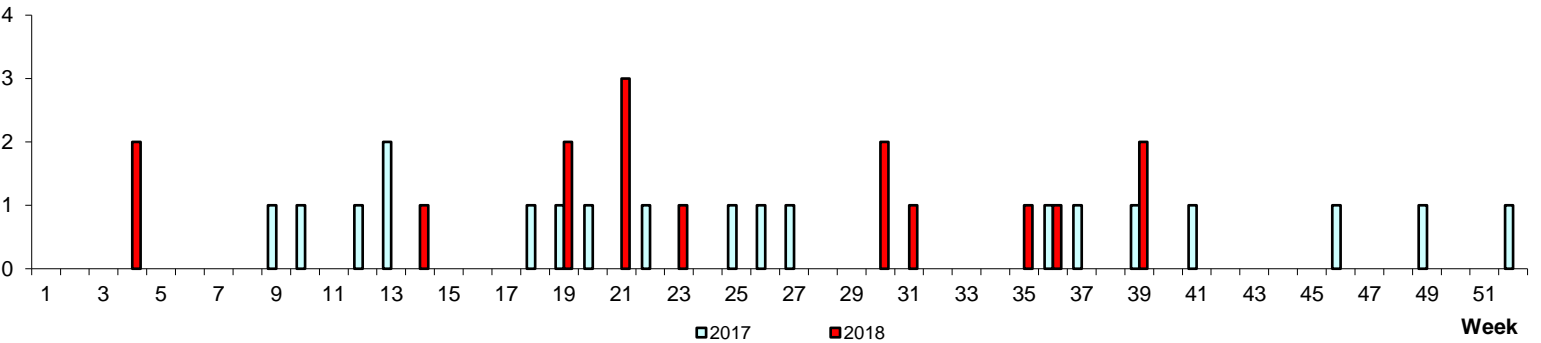
No. of Cases

Pertussis



No. of Cases

Legionellosis



POLYCLINIC ATTENDANCES, 2017-2018

