



WEEKLY INFECTIOUS DISEASE BULLETIN  
EPIDEMIOLOGICAL WEEK 43 18 - 24 Oct 2020

	E Week 43			Cumulative first		43 Weeks
	2020*	2019	Median 2015 -2019	2020	2019	Median 2015 -2019
<b>FOOD/WATER-BORNE DISEASES</b>						
Acute Hepatitis A	0	2	1	23	54	54
Acute Hepatitis E	1	1	2	38	30	49
Campylobacteriosis	10	4	10	391	393	375
Cholera	0	0	0	0	2	2
Paratyphoid	0	0	0	10	9	16
Poliomyelitis	0	0	0	0	0	0
Salmonellosis	24	36	37	1290	1714	1671
Typhoid	0	1	1	30	63	42
<b>VECTOR-BORNE DISEASES</b>						
Chikungunya Fever	0	1	0	12	52	28
Dengue Fever	563	241	82	32442	13234	8510
Dengue Haemorrhagic Fever	2	1	0	52	81	23
Japanese Encephalitis <sup>^</sup>	0	0	NA	0	0	NA
Leptospirosis <sup>^</sup>	3	1	NA	27	17	NA
Malaria	0	0	0	13	23	27
Murine Typhus <sup>^</sup>	0	0	NA	5	5	NA
Nipah virus infection	0	0	0	0	0	0
Plague	0	0	0	0	0	0
Yellow Fever	0	0	0	0	0	0
Zika Virus Infection	0	1	NA	1	12	NA
<b>AIR/DROPLET-BORNE DISEASES</b>						
Avian Influenza	0	0	NA	0	0	NA
Diphtheria	0	0	0	0	0	0
Ebola Virus Disease	0	0	NA	0	0	NA
<i>Haemophilus influenzae</i> type b	0	0	0	1	3	3
Legionellosis	0	0	0	12	17	16
Measles	0	0	1	12	149	60
Melioidosis	1	0	1	27	35	38
Meningococcal Disease	0	0	0	7	6	6
Mumps	9	11	11	238	347	412
Pertussis	0	1	1	11	59	59
Pneumococcal Disease (invasive)	0	1	3	40	113	115
Rubella	0	0	0	1	0	11
Severe acute respiratory syndrome	0	0	0	0	0	0
Tetanus <sup>^</sup>	0	0	0	0	0	
<b>OTHER DISEASES</b>						
Acute hepatitis B	0	1	1	34	32	37
Acute hepatitis C	0	1	1	13	16	17
Botulism <sup>^</sup>	0	0	NA	1	0	NA
<b>MERS-CoV</b>						
Suspect cases tested	0	2	NA	71	126	NA
Other patients tested	0	2	NA	36	83	NA
<b>POLYCLINIC ATTENDANCES - AVERAGE DAILY NUMBER</b>						
Acute upper respiratory infections	778	2952	2869			NA
Acute conjunctivitis	48	78	79			NA
Acute Diarrhoea	297	585	558			NA
Chickenpox	5	9	NA			NA
Hand, Foot And Mouth Disease	3	23	NA			NA
<b>HIV/STI/TB NOTIFICATIONS</b>						
	2020	Sep		Cumulative 2020		
HIV/AIDS	19			187		
Legally Notifiable STIs*	265			1939		
Tuberculosis	154			1013		

\* Preliminary figures, subject to revision when more information is available.

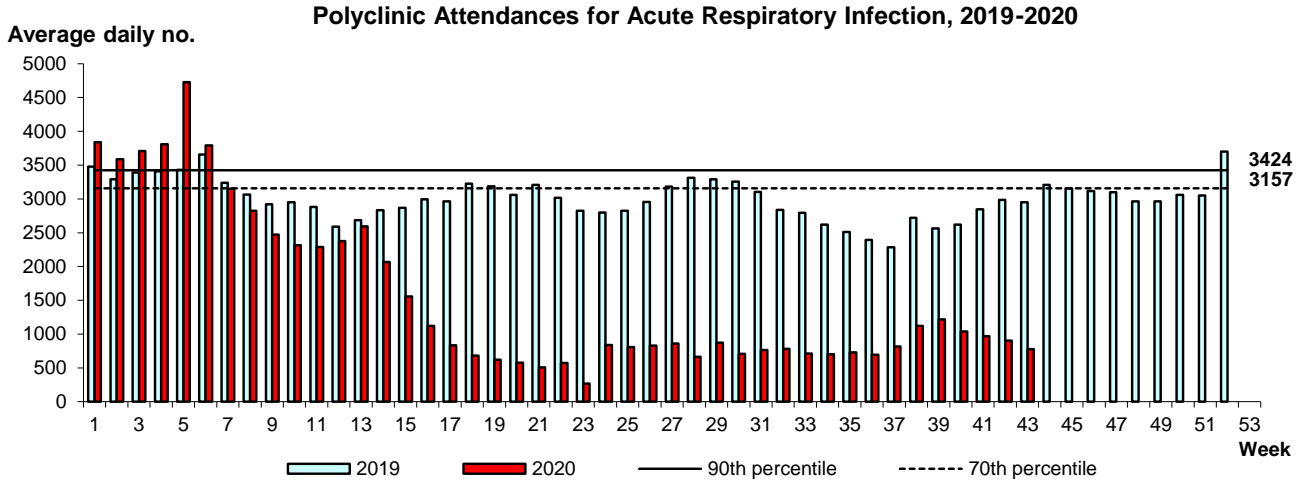
<sup>^</sup> Added to the list of notifiable diseases as of 28 Sep 2016.

Updated case counts due to change in case definitions w.e.f. 1 Jan 2018

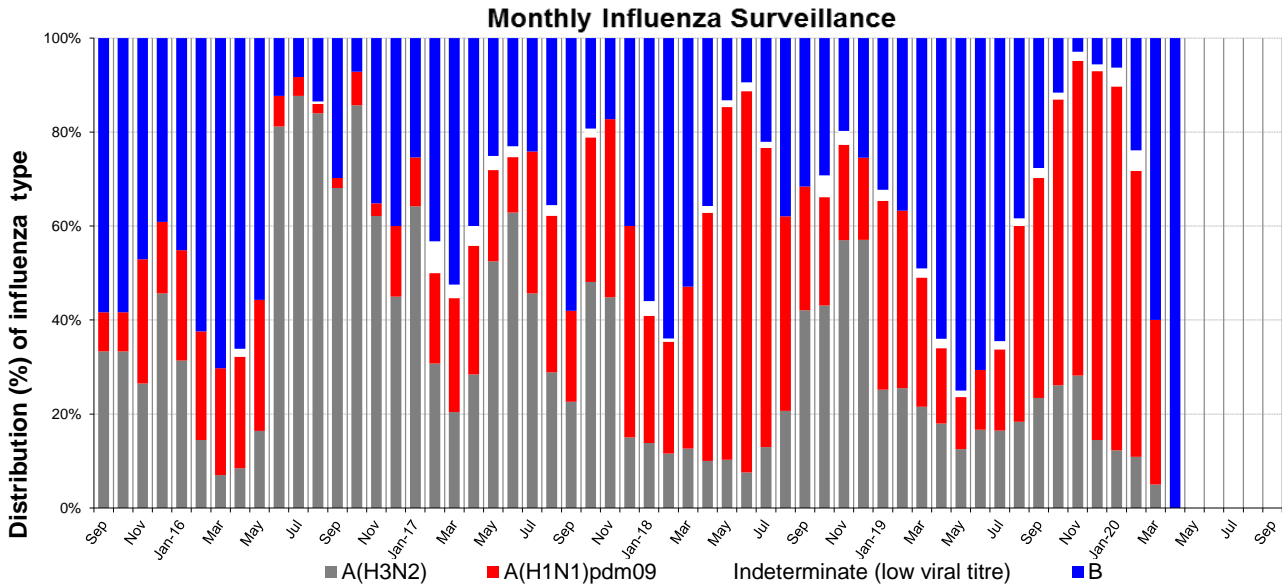
## Influenza Situation in Singapore 2020

Influenza indicators for E-week 43 (18 - 24 Oct 2020) are as follows:

The average daily number of patients seeking treatment in the polyclinics for ARI is 778 (over 5.5 working days) in E-week 43.



The proportion of patients with influenza-like illness (ILI) among the polyclinic attendances for ARI is 1.8%.  
 The overall positivity rate for influenza among ILI samples (n=222) in the community was 0.0% in the past 4 weeks.  
 There were no Influenza positive surveillance samples in Sep 2020.

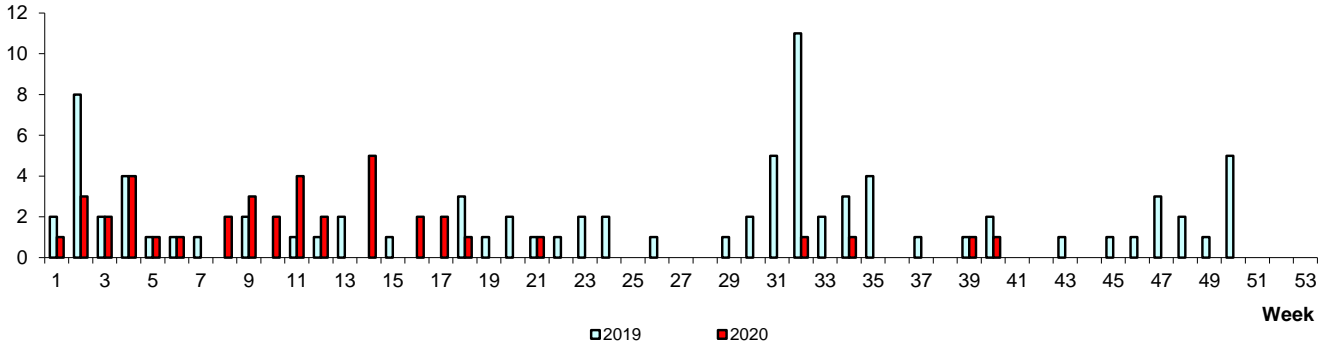


Based on influenza-like illness (ILI) samples from GPs and polyclinics

WEEKLY INCIDENCE OF FOOD/WATER-BORNE DISEASES, 2019-2020

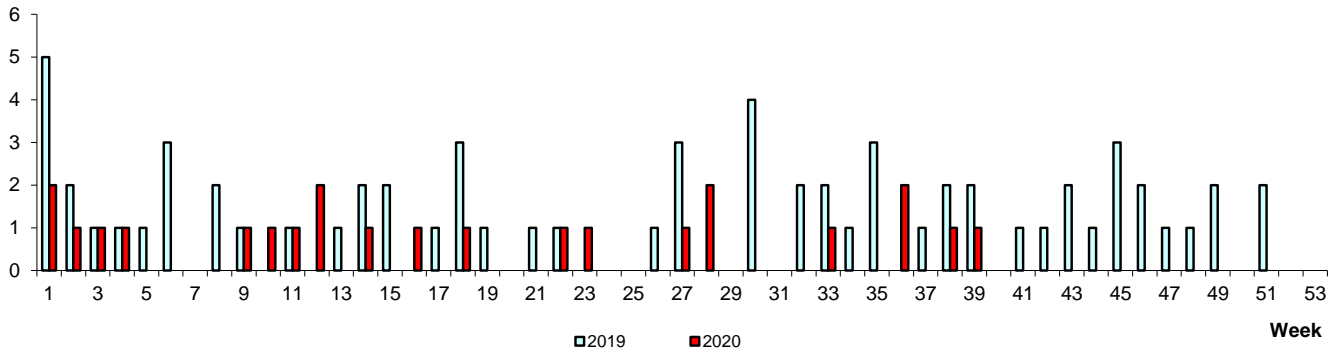
No. of Cases

Paratyphoid/Typhoid



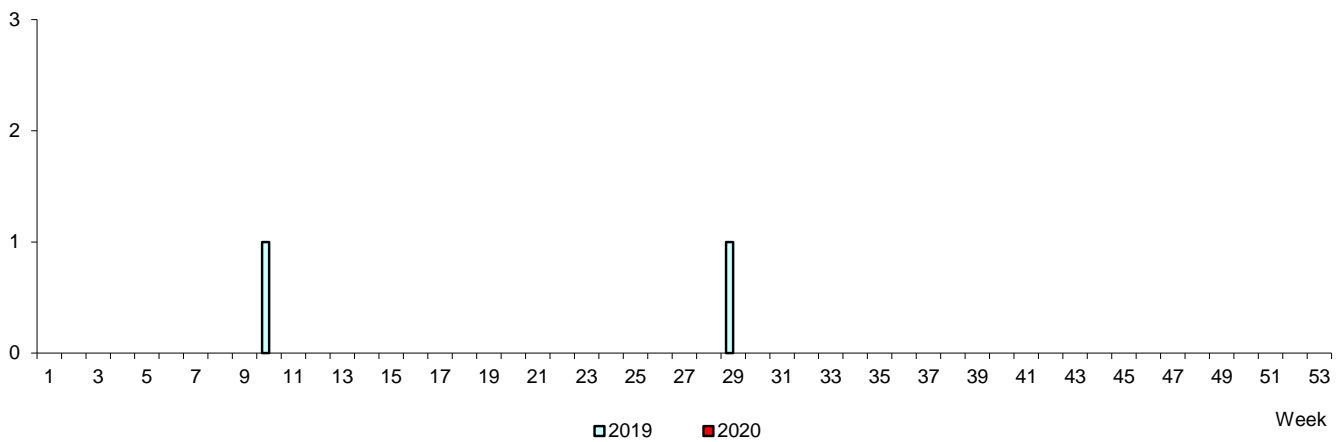
No. of Cases

Acute Hepatitis A



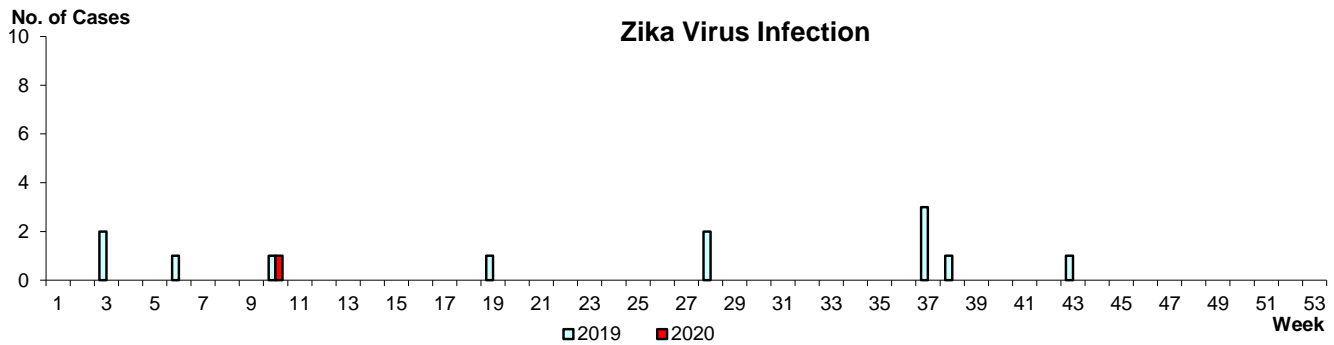
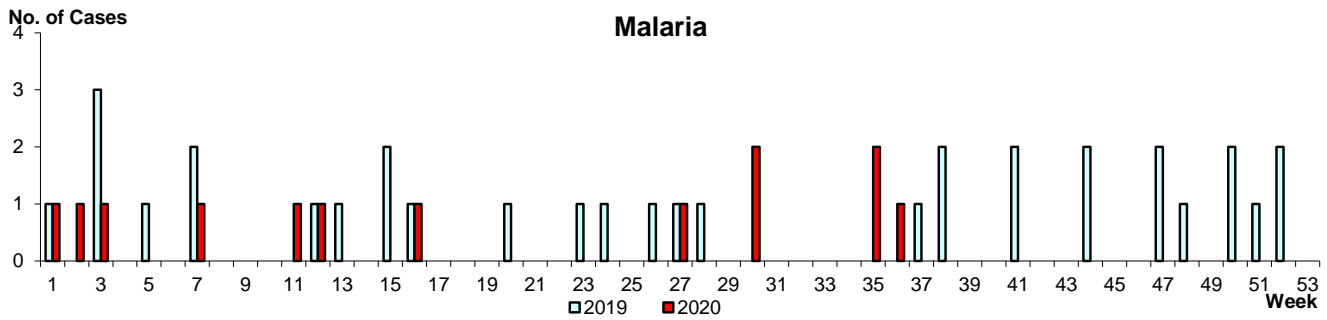
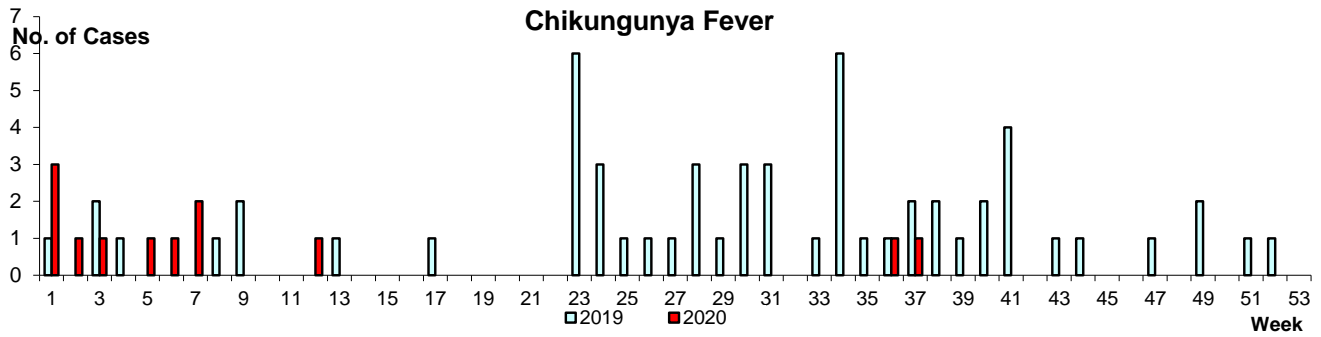
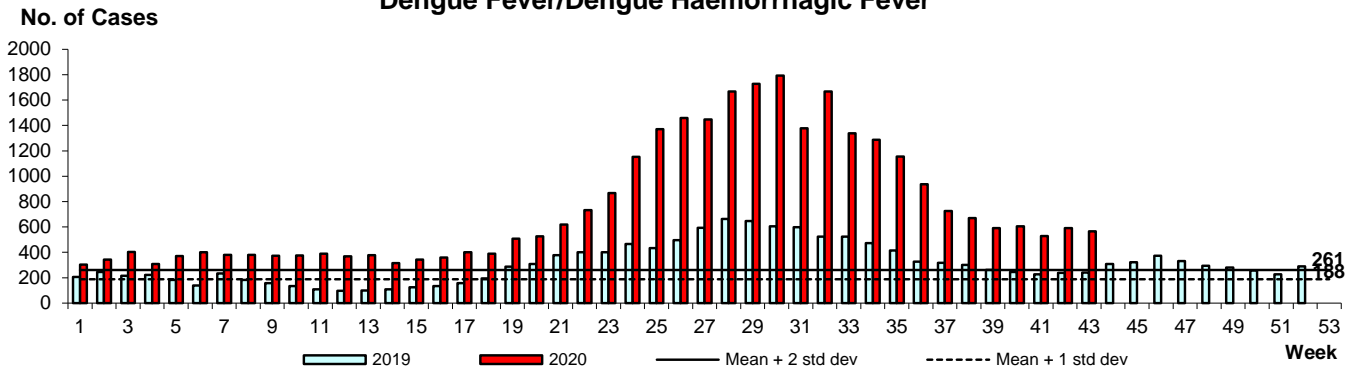
No. of Cases

Cholera

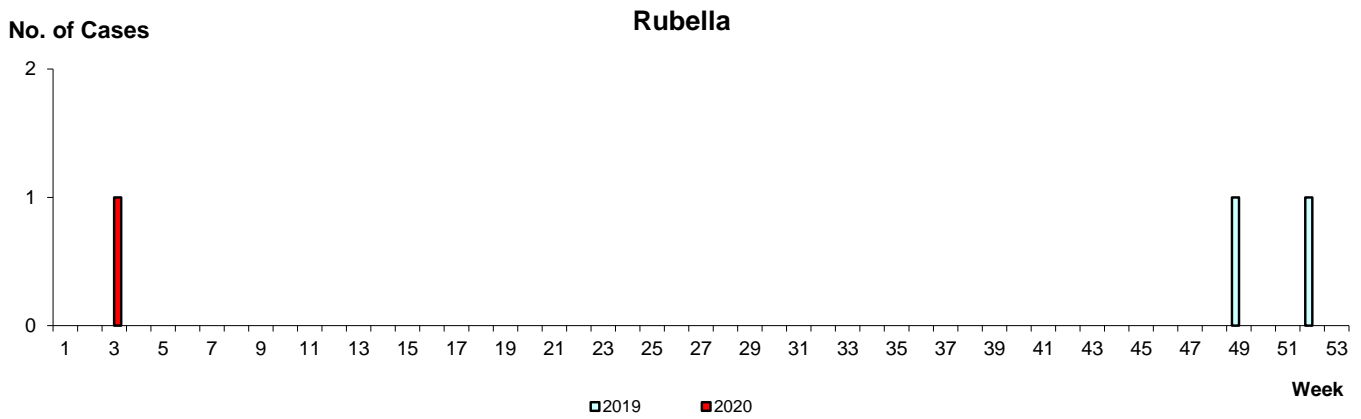
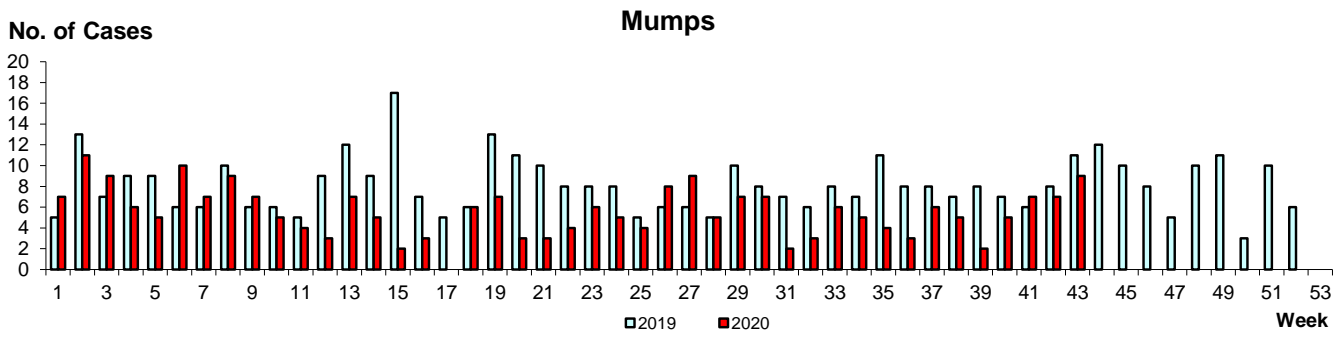
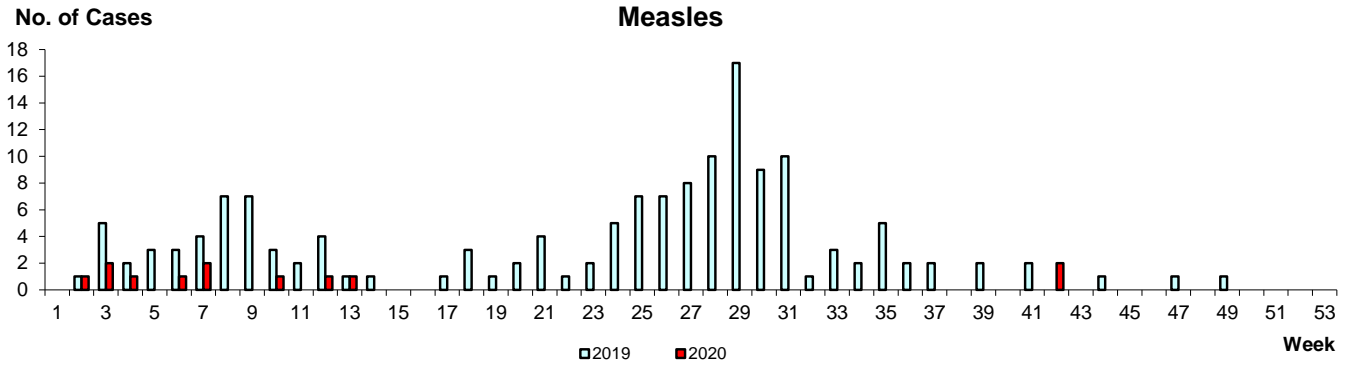


WEEKLY INCIDENCE OF VECTOR-BORNE DISEASES, 2019-2020

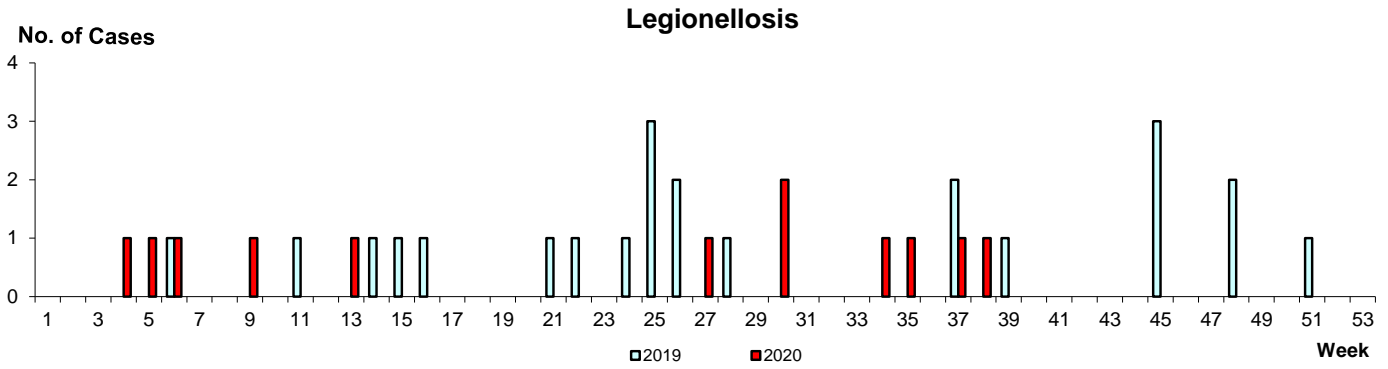
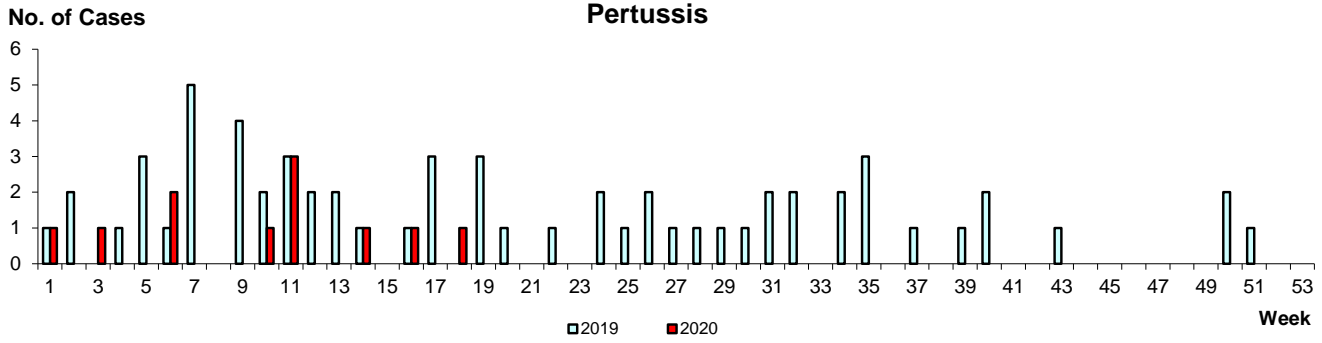
Dengue Fever/Dengue Haemorrhagic Fever



WEEKLY INCIDENCE OF AIR/DROPLET-BORNE DISEASES, 2019-2020

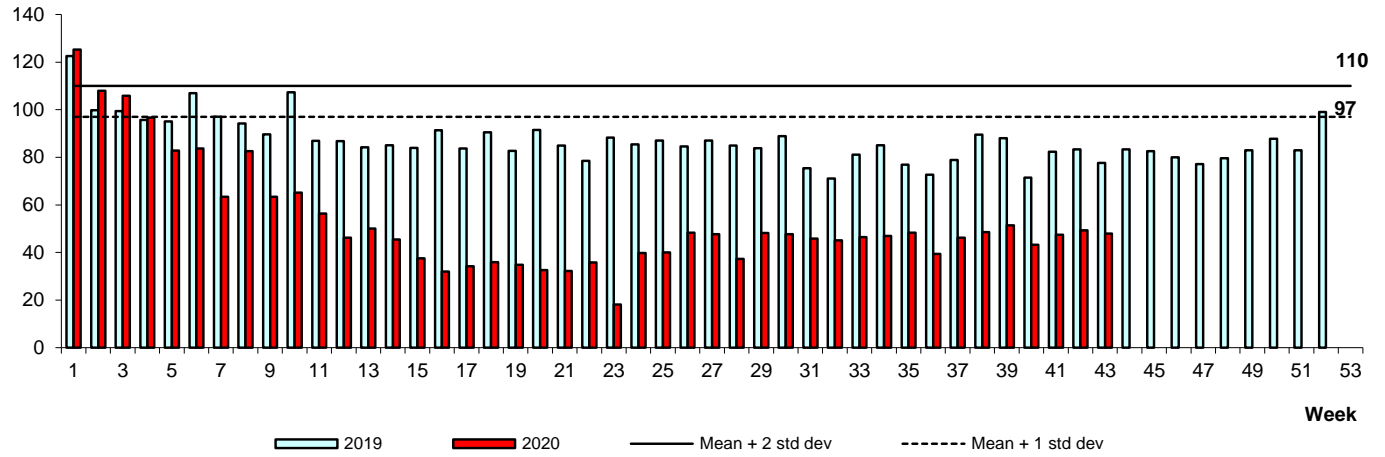


WEEKLY INCIDENCE OF AIR/DROPLET-BORNE DISEASES, 2019-2020



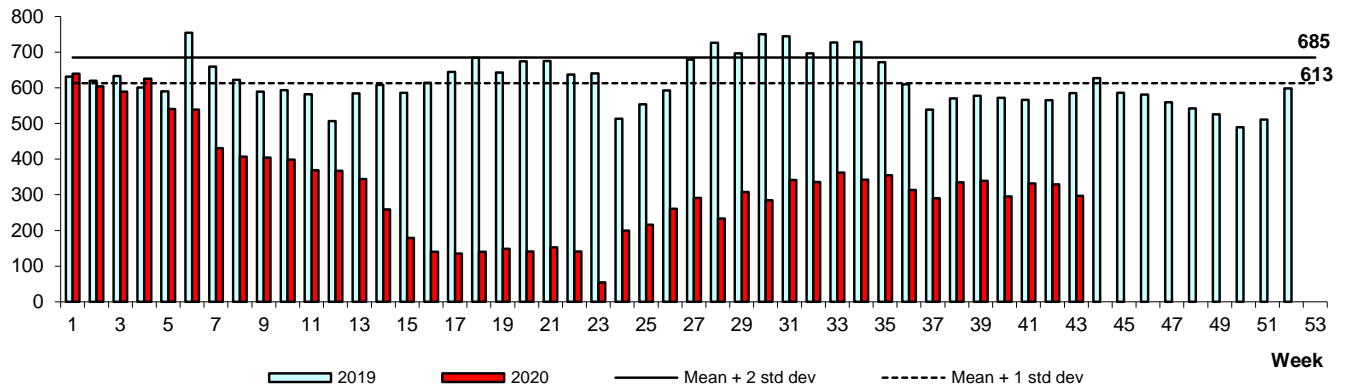
### Conjunctivitis

Average daily no.



### Diarrhoeal Illness

Average daily no.



### Hand, Foot & Mouth Disease

Average daily no.

