

31 July 2020 Daily Report on COVID-19**(1) Number of COVID-19 Cases****Figure 1.1:** Number of Cases Reported over the Past 14 Days

Press Release Date	Imported	Non-Imported Cases														All Cases
		Community Cases ¹										Dorm Residents ²				
		Linked Cases					Unlinked Cases ³					Sub-Total	Incidence Rate ⁴ (per 100,000)	No. of Cases	Incidence Rate ⁴ (per 100,000)	
		SC/PR	G or F (work permit)	G or F (other pass types) ⁵	Visitor	Sub-Total	SC/PR	G or F (work permit)	G or F (other pass types) ⁵	Visitor	Sub-Total					
Before 18-Jul	630	813	344	178	4	1,339	485	172	103	5	765	2,104	-	44,719	-	47,453
18-Jul	8	3	0	1	0	4	2	1	0	0	3	7	0.13	187	58	202
19-Jul	5	1	2	0	0	3	1	3	1	0	5	8	0.15	244	76	257
20-Jul	2	2	4	0	0	6	3	1	1	0	5	11	0.20	110	34	123
21-Jul	3	1	1	1	0	3	0	4	2	0	6	9	0.17	387	120	399
22-Jul	6	2	1	0	0	3	1	1	3	0	5	8	0.15	296	92	310
23-Jul	5	2	0	0	0	2	2	4	0	0	6	8	0.15	341	110	354
24-Jul	2	0	2	0	0	2	0	1	0	0	1	3	0.056	272	84	277
25-Jul	6	0	1	0	0	1	0	1	0	0	1	2	0.037	505	160	513
26-Jul	4	0	2	0	0	2	0	2	1	0	3	5	0.093	472	150	481
27-Jul	15	1	0	1	0	2	0	0	0	0	0	2	0.037	452	140	469
28-Jul	2	0	0	1	0	1	0	0	1	0	1	2	0.037	355	110	359
29-Jul	4	2	0	1	0	3	0	0	0	0	0	3	0.056	327	100	334
30-Jul	4	1	3	0	0	4	0	0	0	0	0	4	0.074	270	84	278
31-Jul	3	0	0	1	0	1	0	1	1	0	2	3	0.056	390	120	396
Total since start of outbreak	699	828	360	184	4	1,376	494	191	113	5	803	2,179	-	49,327	-	52,205
Population at risk												5,381,000		323,000		5,704,000
Prevalence												0.04%		15.27%		0.92%

¹ Previously we had tracked the work permit holders living outside dormitories as a separate category, and put a large number of these workers on Stay Home Notices (SHN). The SHN for these workers has since expired. Hence we have now updated the definition of "Cases in the Community" to include all cases (including amongst work permit holders) that are detected outside of the dormitories.

² Includes PR residing in dorms.

³ Includes cases pending epi-investigation.

⁴ Incidence rates are rounded to two significant figures.

⁵ Includes Training Work Permit (TWP) holders.

Figure 1.2: Epidemic Curve of the COVID-19 Outbreak by Press Release Date

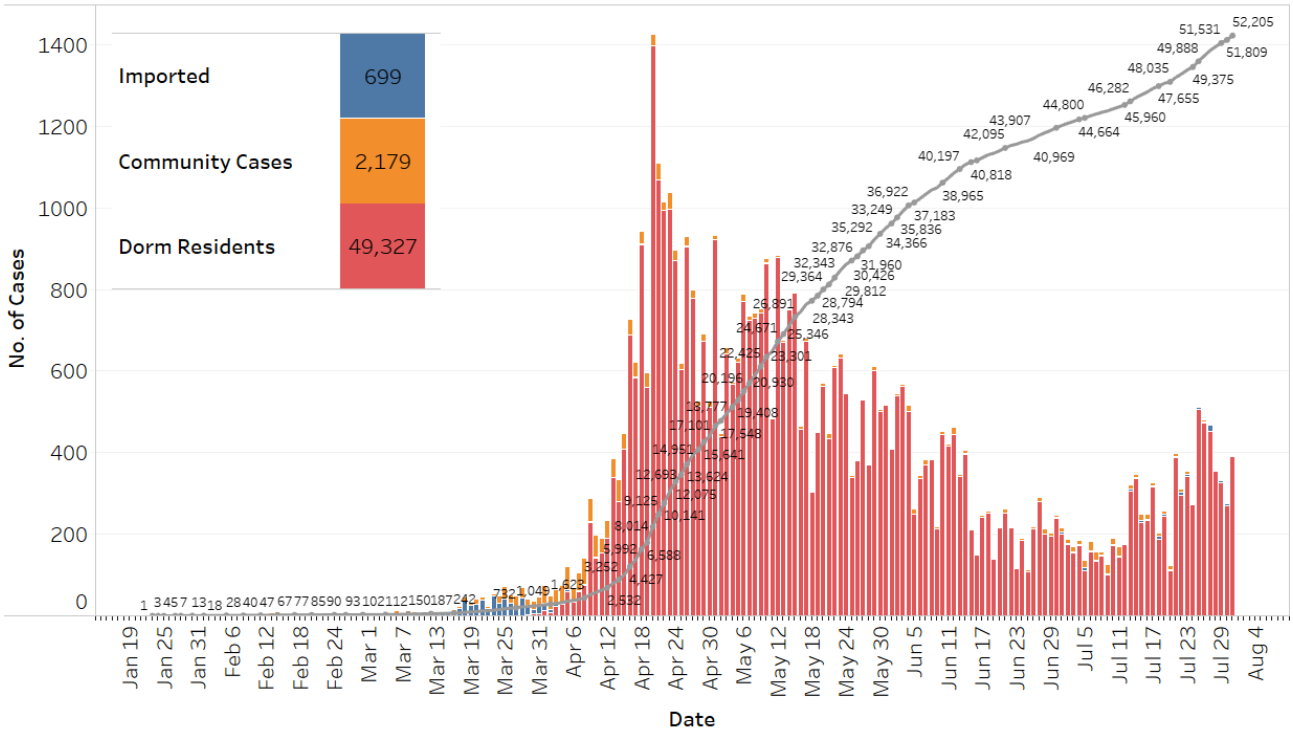
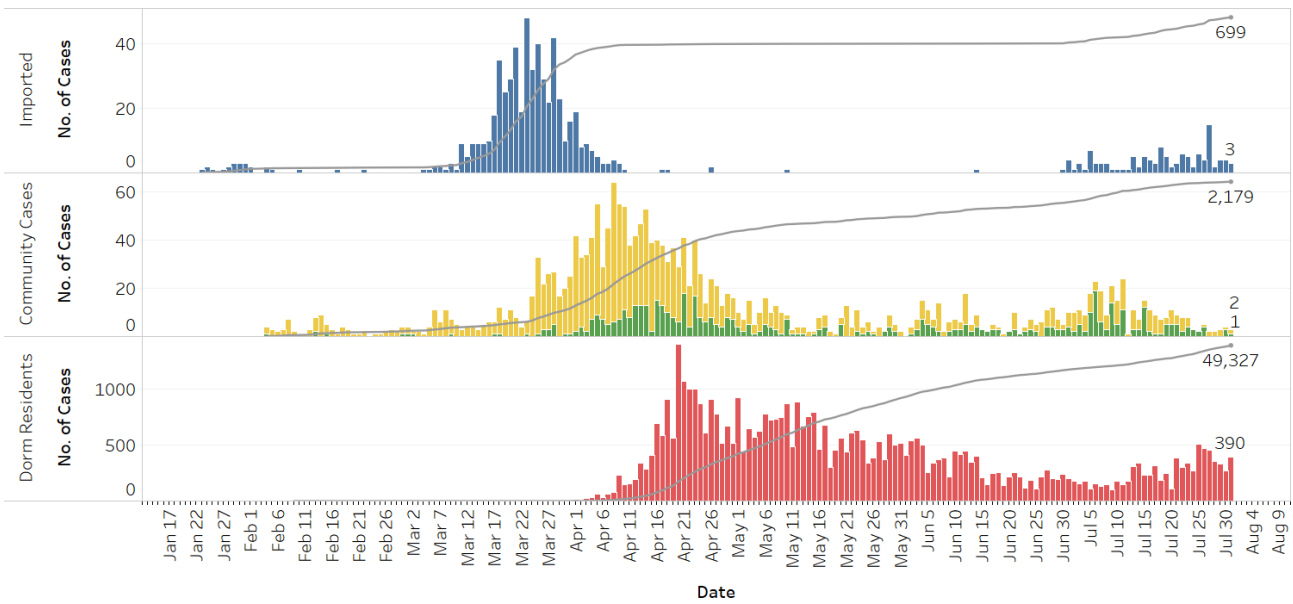


Figure 1.3: Epidemic Curve of the COVID-19 Outbreak by Press Release Date



COVID-19 Cases

- Imported
- Community Cases: SC/PR + G or F (other pass types) + Visitors
- Community Cases: G or F (work permit)
- Dorm Residents

Figure 1.4: Epidemic Curve of Linked and Unlinked Cases among the Community by Press Release Date (left panel) and by Symptom Onset or Notification Date⁶ (right panel)

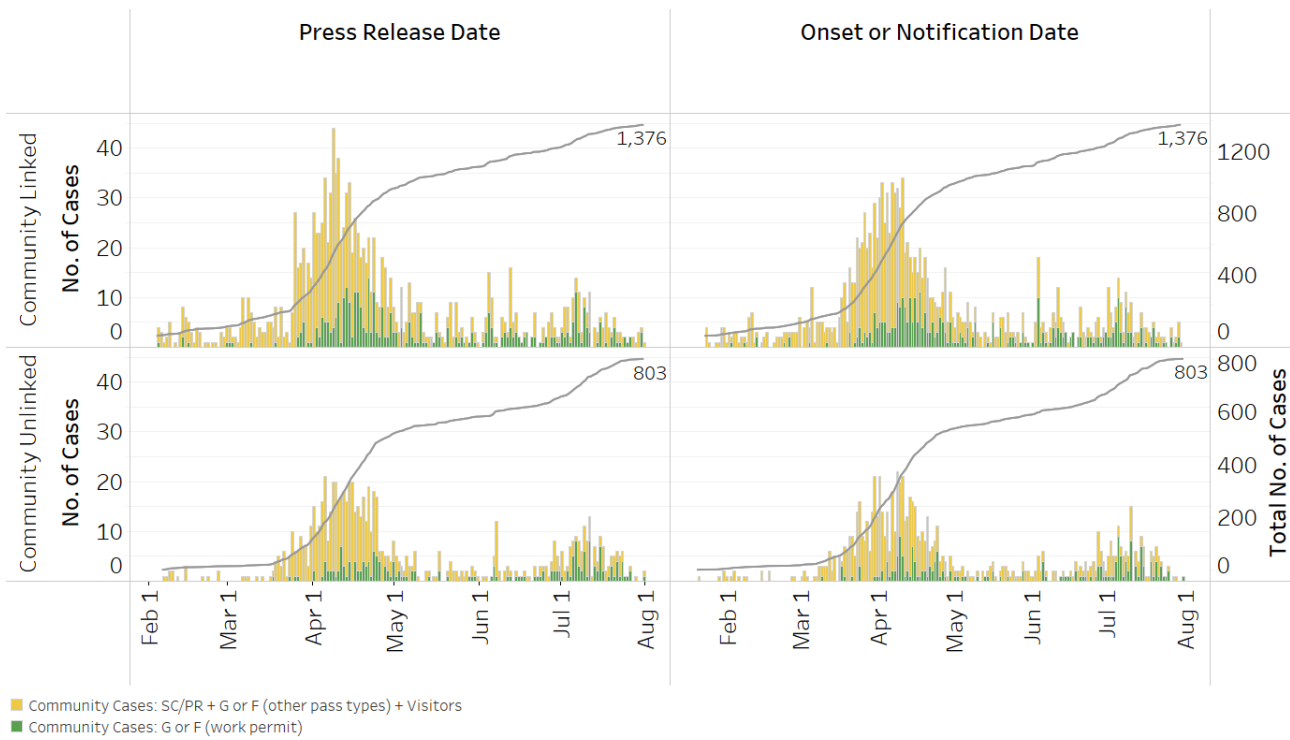
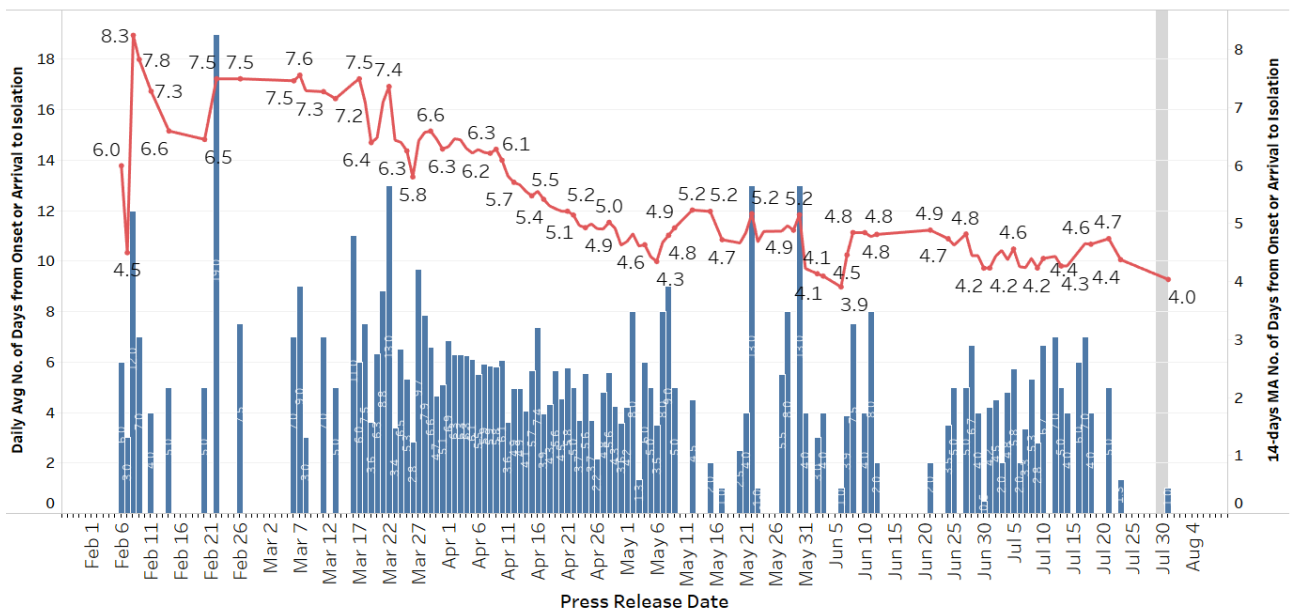


Figure 1.5: Average Number of Days from Onset of Symptoms to Isolation (QO, MOH contact, notification or admission) for Community Unlinked Cases in Each Day⁷



Line represents the 14-day moving average; Bar represents the daily average⁸

⁷ Date of notification was used for cases that did not display any symptoms. The numbers with onset in the past few days may see an increase as more cases are notified.

⁸ Area in grey demarcates the data points for the past 3 days where some cases are still pending investigation. The bar chart shows the daily average number of days from onset date to isolation, while the line chart shows the moving average for the past 14 days. Both charts exclude cases with missing onset dates in the computation of the average.

⁹ Asymptomatic community unlinked cases are not reflected in this chart. Community unlinked cases with symptoms who are isolated on the same day that symptoms occurred would have an isolation time of 0.

Number of COVID-19 Cases in Hospitals and Community Care Facilities

Figure 2.1: Summary of Confirmed Cases by Status in the Past 14 Days

Press Release Date	Currently Admitted in Hospitals		In Care Facilities ⁹	Total Recovered		Total Demised	Total
	ICU	General Wards		Completed Isolation	Discharged from Hospital		
18-Jul	0	169	3,626	41,906	1,927	27	47,655
19-Jul	0	181	3,618	42,156	1,930	27	47,912
20-Jul	0	183	3,454	42,436	1,935	27	48,035
21-Jul	0	170	3,653	42,642	1,942	27	48,434
22-Jul	0	150	3,772	42,839	1,956	27	48,744
23-Jul	0	137	3,919	43,048	1,967	27	49,098
24-Jul	0	157	4,019	43,186	1,986	27	49,375
25-Jul	0	148	4,361	43,357	1,995	27	49,888
26-Jul	0	173	4,648	43,518	2,003	27	50,369
27-Jul	0	179	4,940	43,686	2,006	27	50,838
28-Jul	0	185	5,092	43,875	2,018	27	51,197
29-Jul	0	184	5,222	44,071	2,027	27	51,531
30-Jul	0	148	5,326	44,264	2,044	27	51,809
31-Jul	0	136	5,551	44,436	2,055	27	52,205

⁹ Community Care Facilities (i.e. D'Resort, EXPO, Changi Exhibition Centre, Big Box), Private Hospitals (i.e. Concord International Hospital, Mt Elizabeth Hospital, Gleneagles Hospital, Mt Elizabeth Novena Hospital, Parkway East Hospital), Community Hospitals (i.e. Bright Vision Hospital, St. Andrew's Community Hospital, Jurong Community Hospital) and other care facilities.

(2) Number of Stay-Home-Notice (SHN) Issued

Figure 3.1: Daily Number of SHN issued

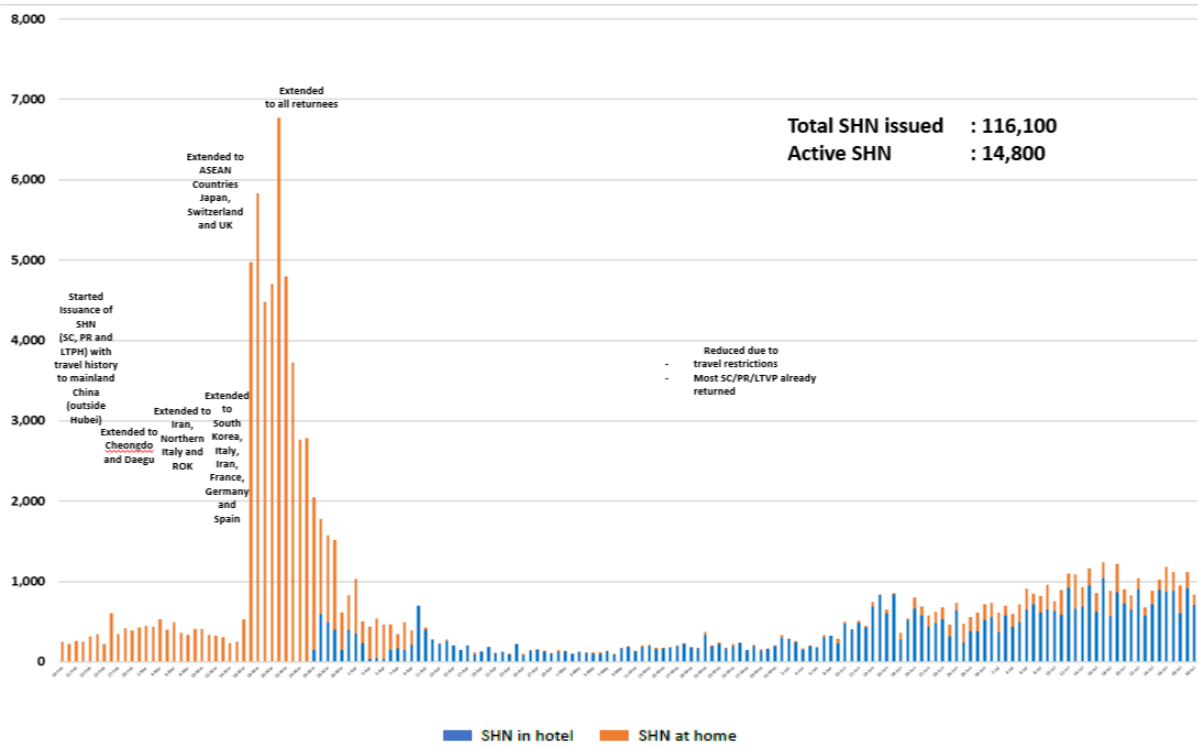
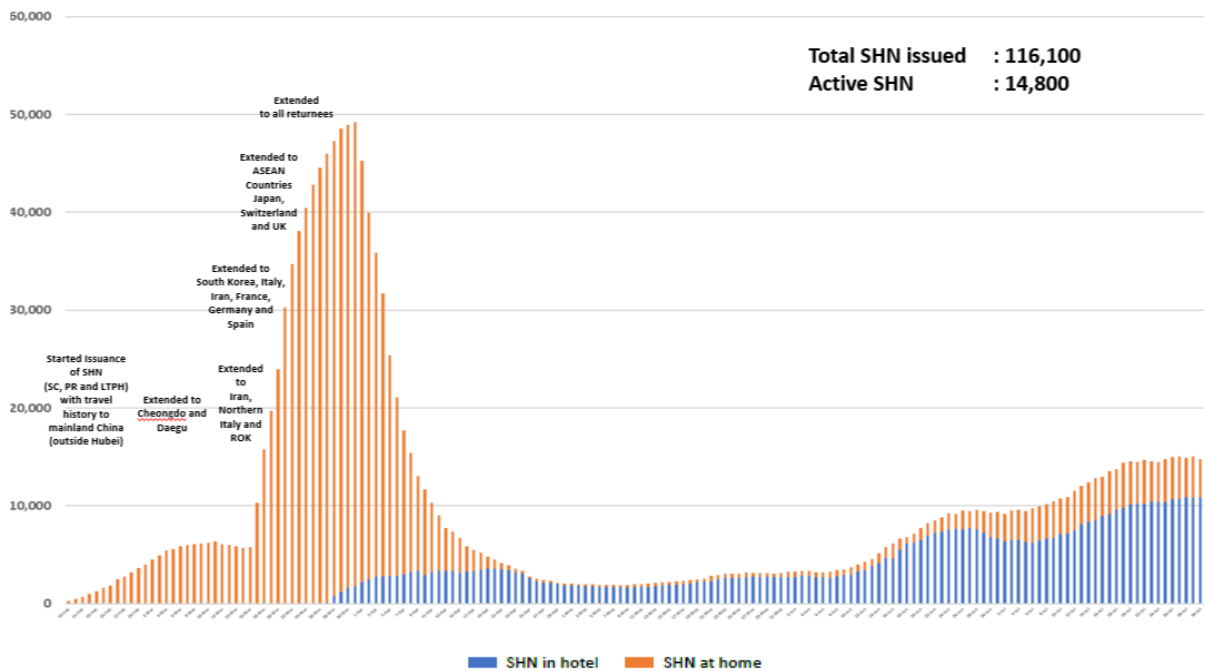
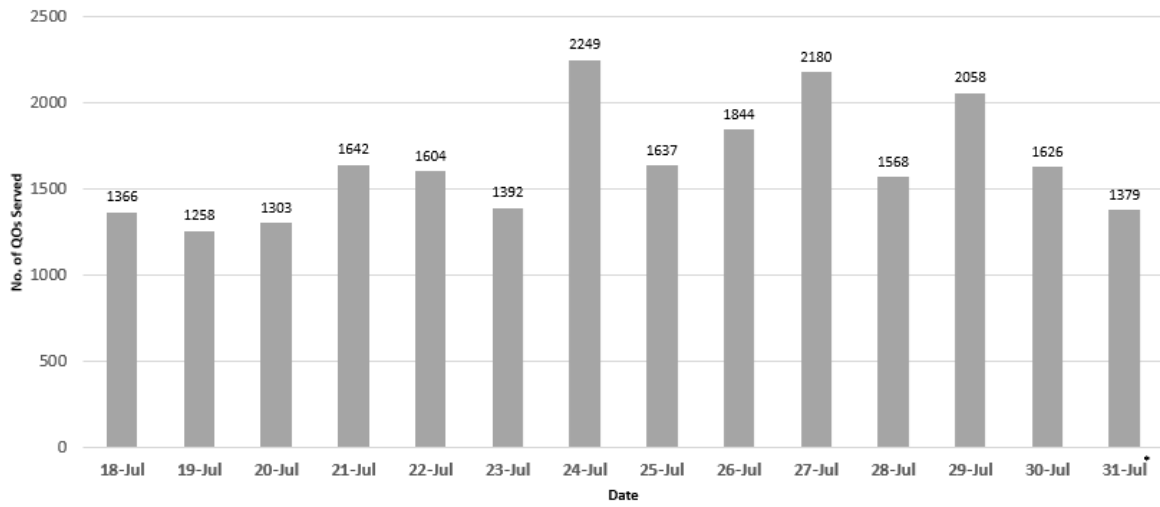


Figure 3.2: Active Stock Number of SHN (Home) and SHN (Hotel)



(3) Number of Quarantine Order (QO) Issued

Figure 4.1: Daily Number of QOs Issued



* No. of QO Served today is up to 1100H

Figure 4.2: Active Number of Persons Under Quarantine (PUQs)

