

**6 September 2020 Daily Report on COVID-19**

**(1) Number of COVID-19 Cases**

**Figure 1.1:** Breakdown of New Confirmed Cases in the Past 14 Days

Press Release Date	Imported			Non-Imported Cases														All Cases
	Isolated	Not Isolated <sup>3</sup>	Sub-Total	Community Cases								Dorm Residents <sup>1,2</sup>						
				Isolated before Detection <sup>4</sup>				Detected through Surveillance <sup>5</sup>				Sub-Total	Incidence Rate <sup>6</sup> (per 100,000)	Isolated before Detection <sup>6</sup>	Detected through Surveillance <sup>7</sup>	No. of Cases	Incidence Rate <sup>8</sup> (per 100,000)	
				SC/PR	G or F	Visitor	Sub-Total	SC/PR	G or F	Visitor	Sub-Total							
Before 24-Aug	581	272	853	351	253	1	605	978	602	9	1,589	2,194	-	53,266		53,266	-	56,313
24-Aug	7	0	7	1	0	0	1	0	0	0	0	1	0.019	26	17	43	13	51
25-Aug	1	0	1	0	0	0	0	0	0	0	0	0	0	26	4	30	9.3	31
26-Aug	10	0	10	0	2	0	2	1	0	0	1	3	0.056	29	18	47	15	60
27-Aug	5	0	5	0	0	0	0	2	0	0	2	2	0.037	66	4	70	22	77
28-Aug	10	0	10	3	0	0	3	1	0	0	1	4	0.074	70	10	80	25	94
29-Aug	3	0	3	0	0	0	0	0	1	0	1	1	0.019	37	10	47	15	51
30-Aug	7	0	7	7	0	0	7	0	1	0	1	8	0.15	22	16	38	12	53
31-Aug	7	0	7	0	0	0	0	0	3	0	3	3	0.056	15	16	31	9.6	41
1-Sep	7	0	7	0	0	0	0	0	1	0	1	1	0.019	22	10	32	9.9	40
2-Sep	3	0	3	0	0	0	0	1	2	0	3	3	0.056	14	29	43	13	49
3-Sep	5	0	5	0	0	0	0	1	1	0	2	2	0.037	22	19	41	13	48
4-Sep	3	0	3	0	0	0	0	0	0	0	0	0	0	5	32	37	11	40
5-Sep	2	0	2	0	0	0	0	1	2	0	3	3	0.056	14	15	29	9	34
6-Sep	13	0	13	0	0	0	0	0	4	0	4	4	0.074	5	18	23	7.1	40
Total since start of outbreak	664	272	936	362	255	1	618	985	617	9	1,611	2,229	-	53,857		53,857	-	57,022
Population at risk												5,381,000				323,000		5,704,000
Prevalence												0.04%				16.67%		1.00%

<sup>1</sup> Includes PRs and visitors residing in dorms.

<sup>2</sup> Breakdown of dorm cases into those detected through surveillance and those isolated before detection is not available before 24 Aug.

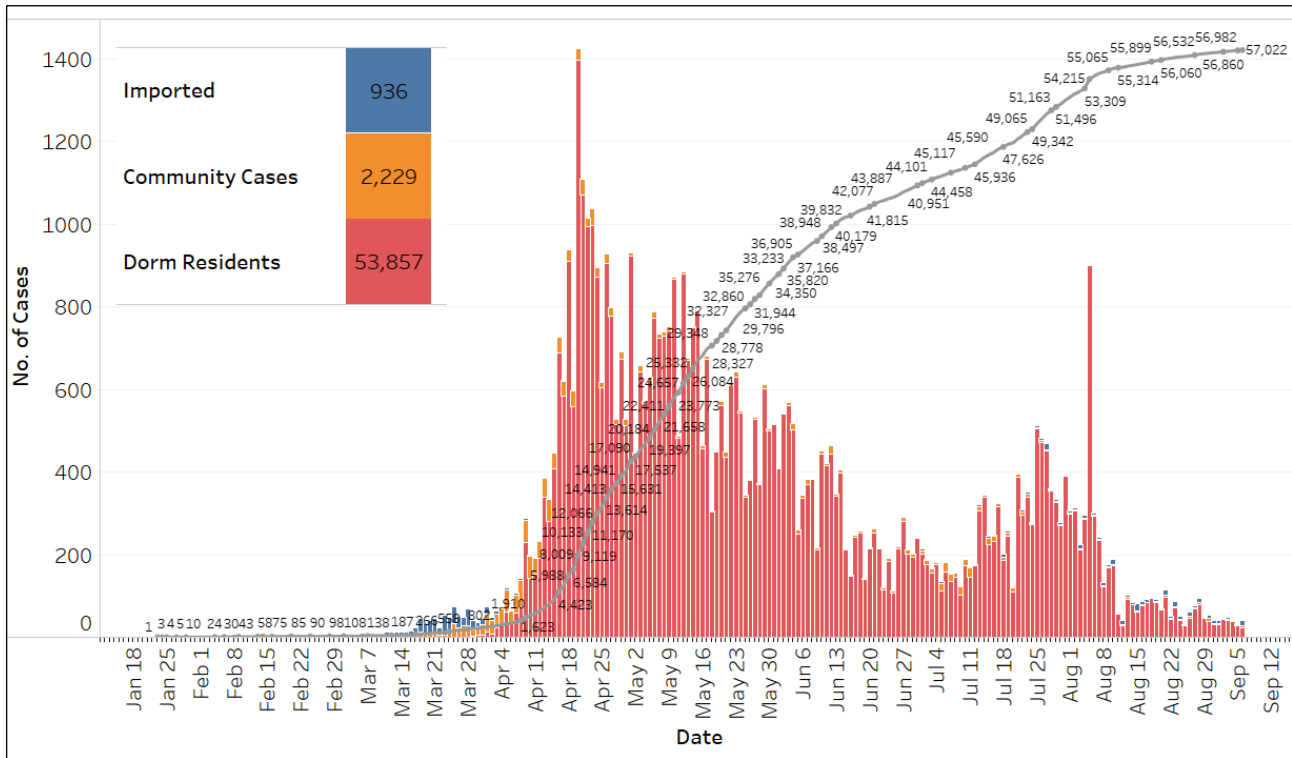
<sup>3</sup> All of these cases were reported before early Apr, and constitute the first wave of imported cases.

<sup>4</sup> Cases who were already quarantined and tested during quarantine to determine their status.

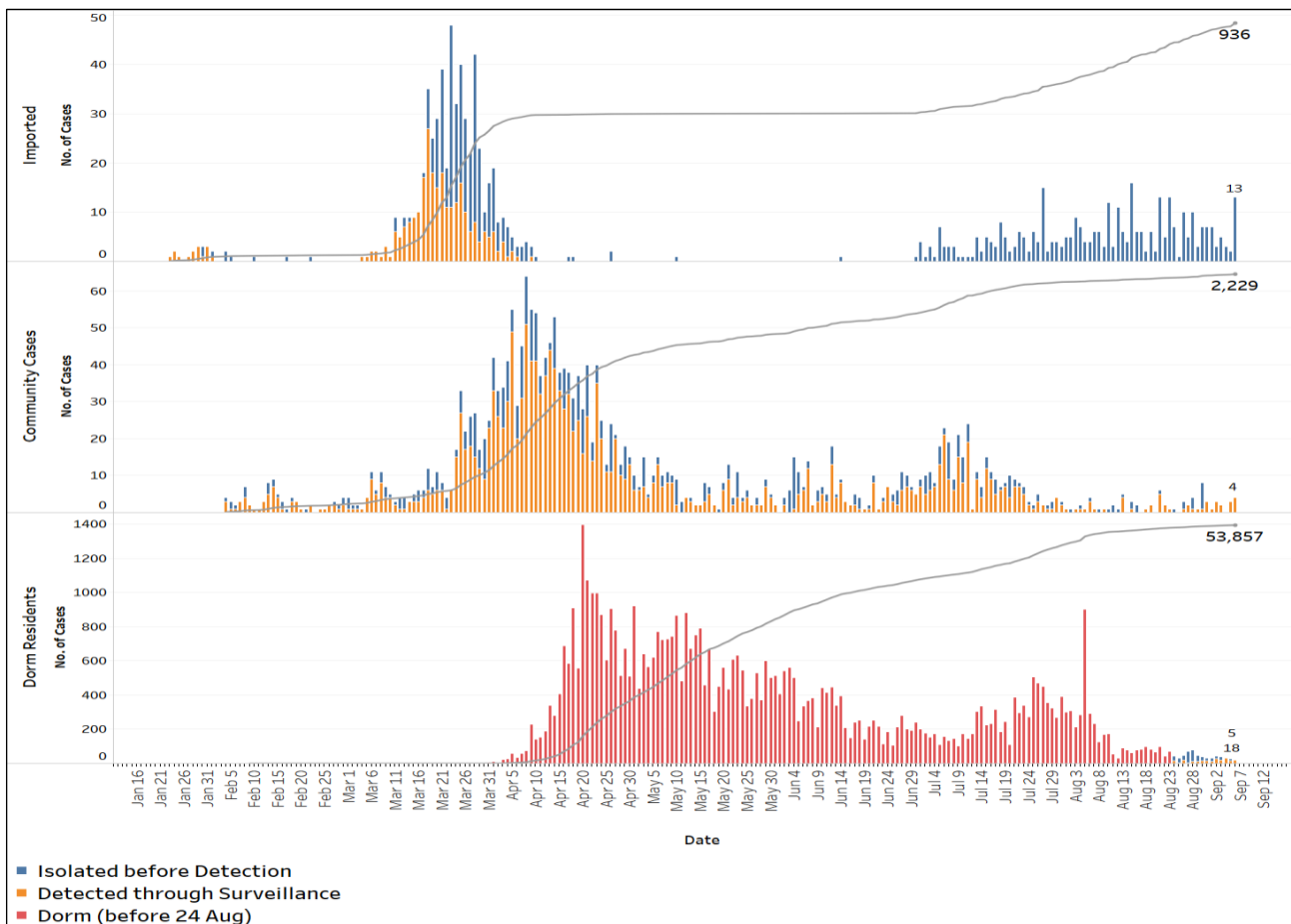
<sup>5</sup> Cases who were identified through surveillance testing, such as the bi-weekly Rostered Routine Testing (RRT) of at-risk workers and testing of those with Acute Respiratory Illness (ARI) symptoms.

<sup>6</sup> Incidence rates are rounded to two significant figures.

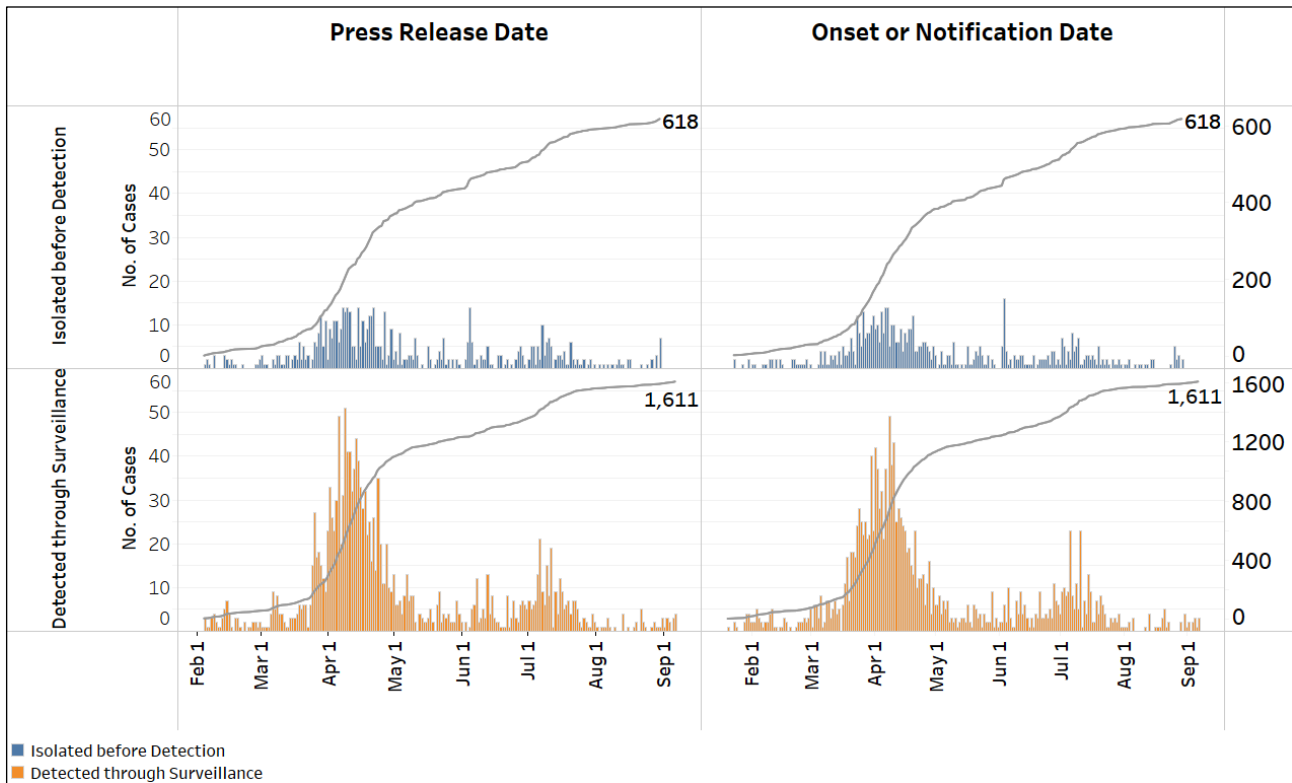
**Figure 1.2:** Epidemic Curve of the COVID-19 Outbreak by Press Release Date



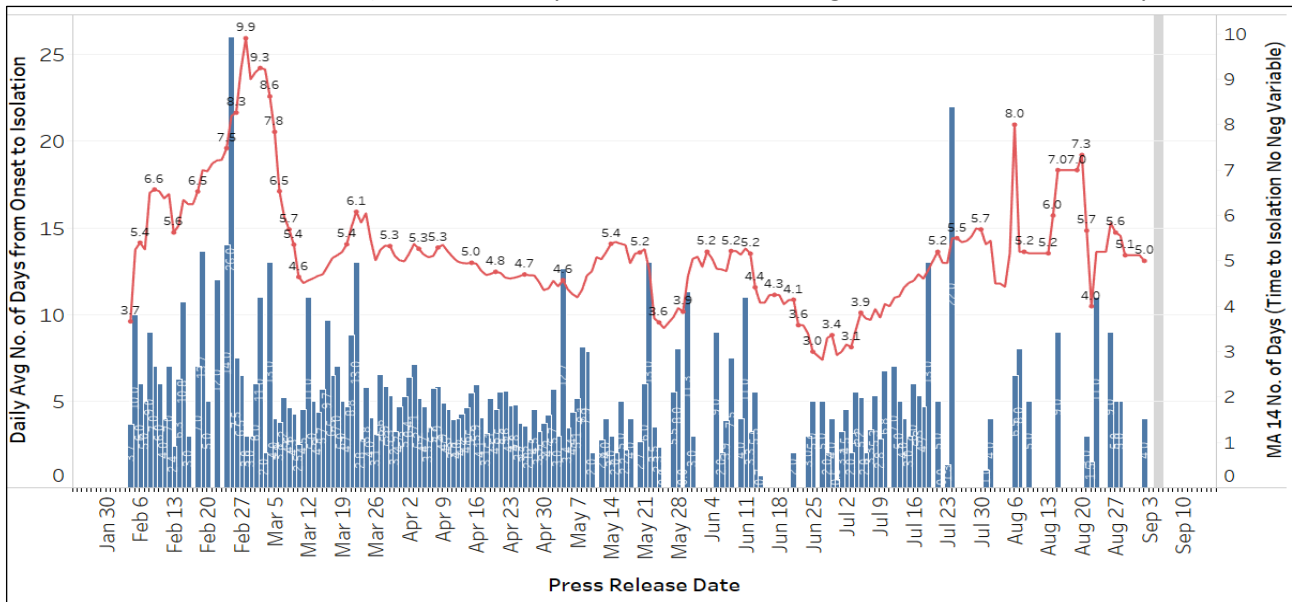
**Figure 1.3:** Epidemic Split Curve of the COVID-19 Outbreak by Press Release Date



**Figure 1.4:** Epidemic Curve of Community Cases by Press Release Date (left panel) and by Symptom Onset or Notification Date<sup>7</sup> (right panel)



**Figure 1.5:** Average Number of Days from Onset of Symptoms to Isolation (QO, hospital admission or notification to MOH) for Community Cases Detected through Surveillance in Each Day<sup>8</sup>



*Line represents the 14-day moving average; Bar represents the daily average<sup>9</sup>*

<sup>7</sup> Date of notification was used for cases that did not display any symptoms. The numbers with onset in the past few days may see an increase as more cases are notified.

<sup>8</sup> Area in grey demarcates the data points for the past 3 days where some cases are still pending investigation. The bar chart shows the daily average number of days from onset date to isolation, while the line chart shows the moving average for the past 14 days. Both charts exclude cases with missing onset dates in the computation of the average.

<sup>9</sup> Asymptomatic community unlinked cases are not reflected in this chart. Community unlinked cases with symptoms who are isolated on the same day that symptoms occurred would have an isolation time of 0.

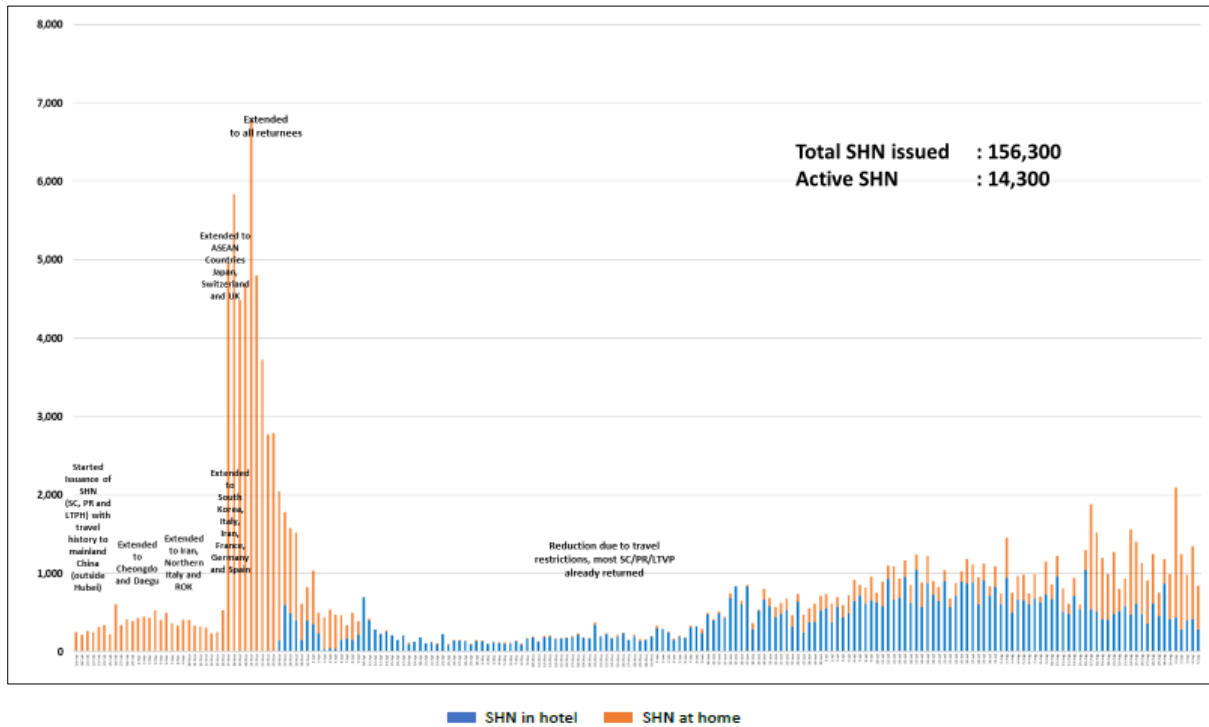
**(2) Number of COVID-19 Cases in Hospitals and Community Care Facilities****Figure 2.1:** Summary of Confirmed Cases by Status in the Past 14 Days

Press Release Date	Currently Admitted in Hospitals		In Care Facilities <sup>10</sup>	Total Recovered		Total Demised	Total
	ICU	General Wards		Completed Isolation	Discharged from Hospital		
24-Aug	0	84	1,707	52,347	2,239	27	<b>56,404</b>
25-Aug	0	78	1,514	52,564	2,252	27	<b>56,435</b>
26-Aug	0	65	1,432	52,708	2,263	27	<b>56,495</b>
27-Aug	0	66	1,340	52,871	2,268	27	<b>56,572</b>
28-Aug	0	71	1,231	53,066	2,271	27	<b>56,666</b>
29-Aug	0	70	1,173	53,166	2,281	27	<b>56,717</b>
30-Aug	0	74	1,084	53,300	2,286	27	<b>56,771</b>
31-Aug	0	78	1,049	53,366	2,292	27	<b>56,812</b>
1-Sep	0	86	990	53,455	2,294	27	<b>56,852</b>
2-Sep	0	75	867	53,592	2,299	27	<b>56,860</b>
3-Sep	0	52	801	53,712	2,316	27	<b>56,908</b>
4-Sep	0	51	696	53,852	2,322	27	<b>56,948</b>
5-Sep	0	50	638	53,942	2,325	27	<b>56,982</b>
6-Sep	0	51	611	53,998	2,335	27	<b>57,022</b>

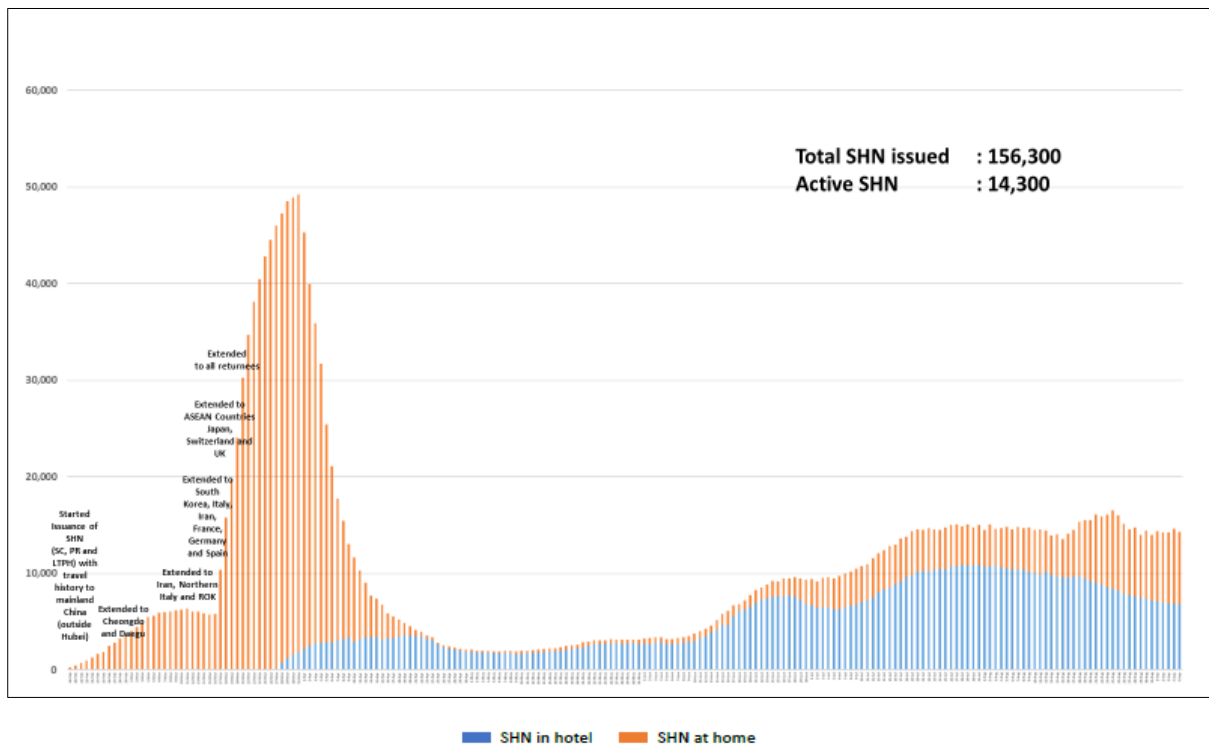
<sup>10</sup> Community Care Facilities (i.e. D'Resort, EXPO, Big Box), Private Hospitals (i.e. Concord International Hospital, Mt Elizabeth Hospital, Gleneagles Hospital, Mt Elizabeth Novena Hospital, Parkway East Hospital), Community Hospitals (i.e. Bright Vision Hospital, St. Andrew's Community Hospital, Jurong Community Hospital) and other care facilities.

### (3) Number of Stay-Home-Notice (SHN) Issued

**Figure 3.1:** Daily Number of SHN issued

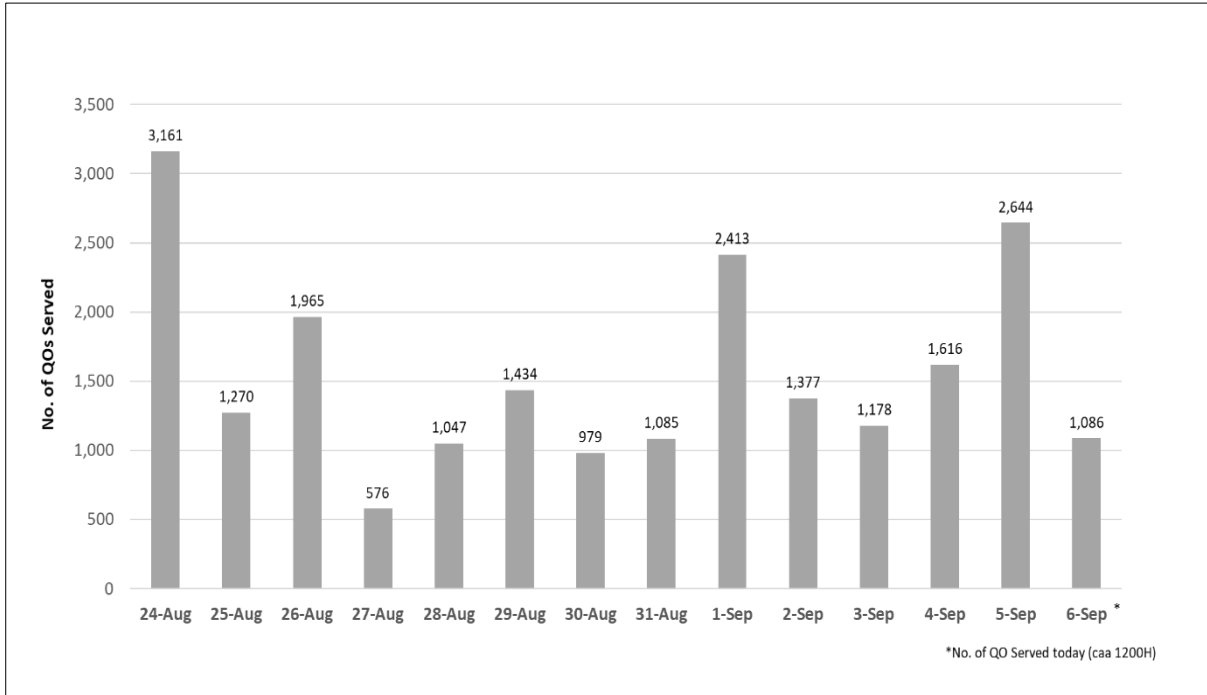


**Figure 3.2:** Active Stock Number of SHN (Home) and SHN (Hotel)



**(4) Number of Quarantine Order (QO) Issued**

**Figure 4.1:** Daily Number of QOs Issued



**Figure 4.2:** Active Number of Persons Under Quarantine (PUQs)

