

8 September 2020 Daily Report on COVID-19

(1) Number of COVID-19 Cases

Figure 1.1: Breakdown of New Confirmed Cases in the Past 14 Days

Press Release Date	Imported			Non-Imported Cases														All Cases
				Community Cases								Dorm Residents ^{1,2}						
	Isolated	Not Isolated ³	Sub-Total	Isolated before Detection ⁴				Detected through Surveillance ⁵				Sub-Total	Incidence Rate ⁶ (per 100,000)	Isolated before Detection ⁶	Detected through Surveillance ⁶	No. of Cases	Incidence Rate ⁷ (per 100,000)	
				SC/PR	G or F	Visitor	Sub-Total	SC/PR	G or F	Visitor	Sub-Total							
Before 26-Aug	589	272	861	352	254	1	607	978	601	9	1,588	2,195	-	53,339		53,339	-	56,395
26-Aug	10	0	10	0	2	0	2	1	0	0	1	3	0.056	29	18	47	15	60
27-Aug	5	0	5	0	0	0	0	2	0	0	2	2	0.037	66	4	70	22	77
28-Aug	10	0	10	3	0	0	3	1	0	0	1	4	0.074	70	10	80	25	94
29-Aug	3	0	3	0	0	0	0	0	1	0	1	1	0.019	37	10	47	15	51
30-Aug	7	0	7	7	0	0	7	0	1	0	1	8	0.15	22	16	38	12	53
31-Aug	7	0	7	0	0	0	0	0	3	0	3	3	0.056	15	16	31	9.6	41
1-Sep	7	0	7	0	0	0	0	0	1	0	1	1	0.019	22	10	32	9.9	40
2-Sep	3	0	3	0	0	0	0	1	2	0	3	3	0.056	14	29	43	13	49
3-Sep	5	0	5	0	0	0	0	1	1	0	2	2	0.037	22	19	41	13	48
4-Sep	3	0	3	0	0	0	0	0	0	0	0	0	0	5	32	37	11	40
5-Sep	2	0	2	0	0	0	0	1	2	0	3	3	0.056	14	15	29	9.0	34
6-Sep	13	0	13	0	1	0	1	0	3	0	3	4	0.074	5	18	23	7.1	40
7-Sep	3	0	3	0	0	0	0	0	1	0	1	1	0.019	9	9.0	18	5.6	22
8-Sep	1	0	1	0	0	0	0	0	0	0	0	0	0	25	21	46	14	47
Total since start of outbreak	668	272	940	362	257	1	620	985	616	9	1,610	2,230	-	53,921		53,921	-	57,091
Population at risk												5,381,000				323,000		5,704,000
Prevalence												0.04%				16.69%		1.00%

¹ Includes PRs and visitors residing in dorms.

² Breakdown of dorm cases into those detected through surveillance and those isolated before detection is not available before 24 Aug.

³ All of these cases were reported before early Apr, and constitute the first wave of imported cases.

⁴ Cases who were already quarantined and tested during quarantine to determine their status.

⁵ Cases who were identified through surveillance testing, such as the bi-weekly Rostered Routine Testing (RRT) of at-risk workers and testing of those with Acute Respiratory Illness (ARI) symptoms.

⁶ Incidence rates are rounded to two significant figures.

Figure 1.2: Epidemic Curve of the COVID-19 Outbreak by Press Release Date

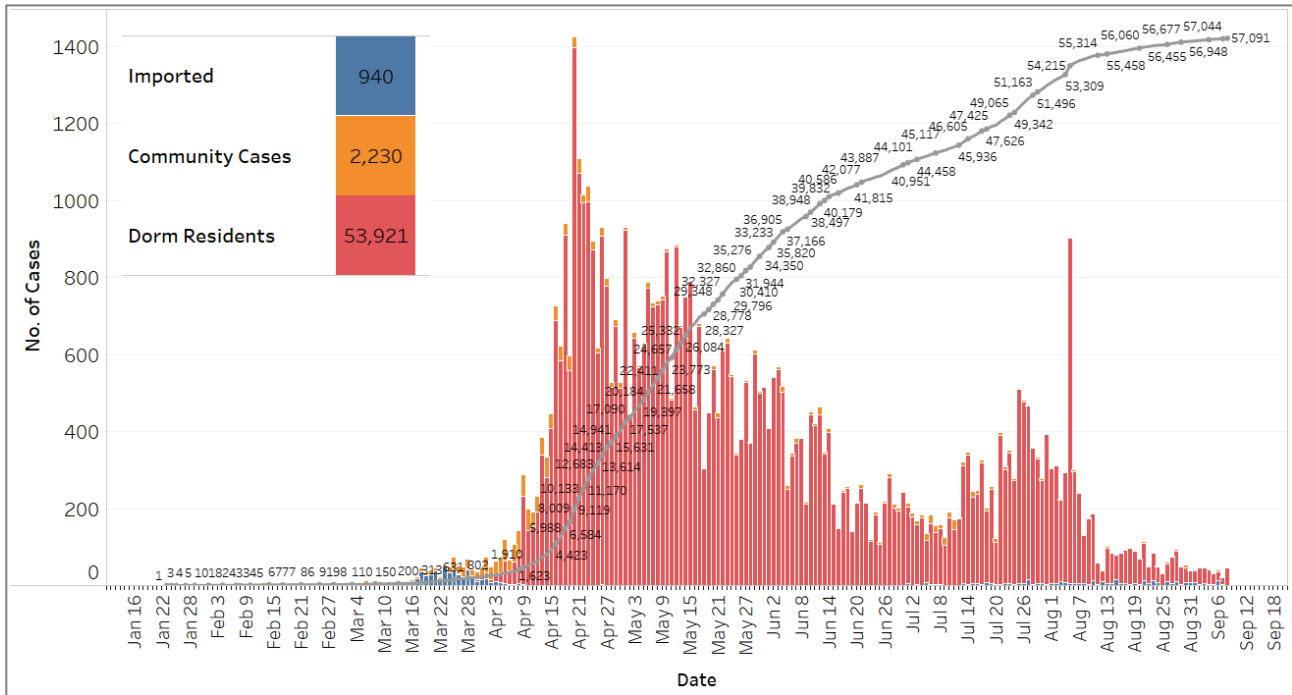


Figure 1.3: Epidemic Split Curve of the COVID-19 Outbreak by Press Release Date

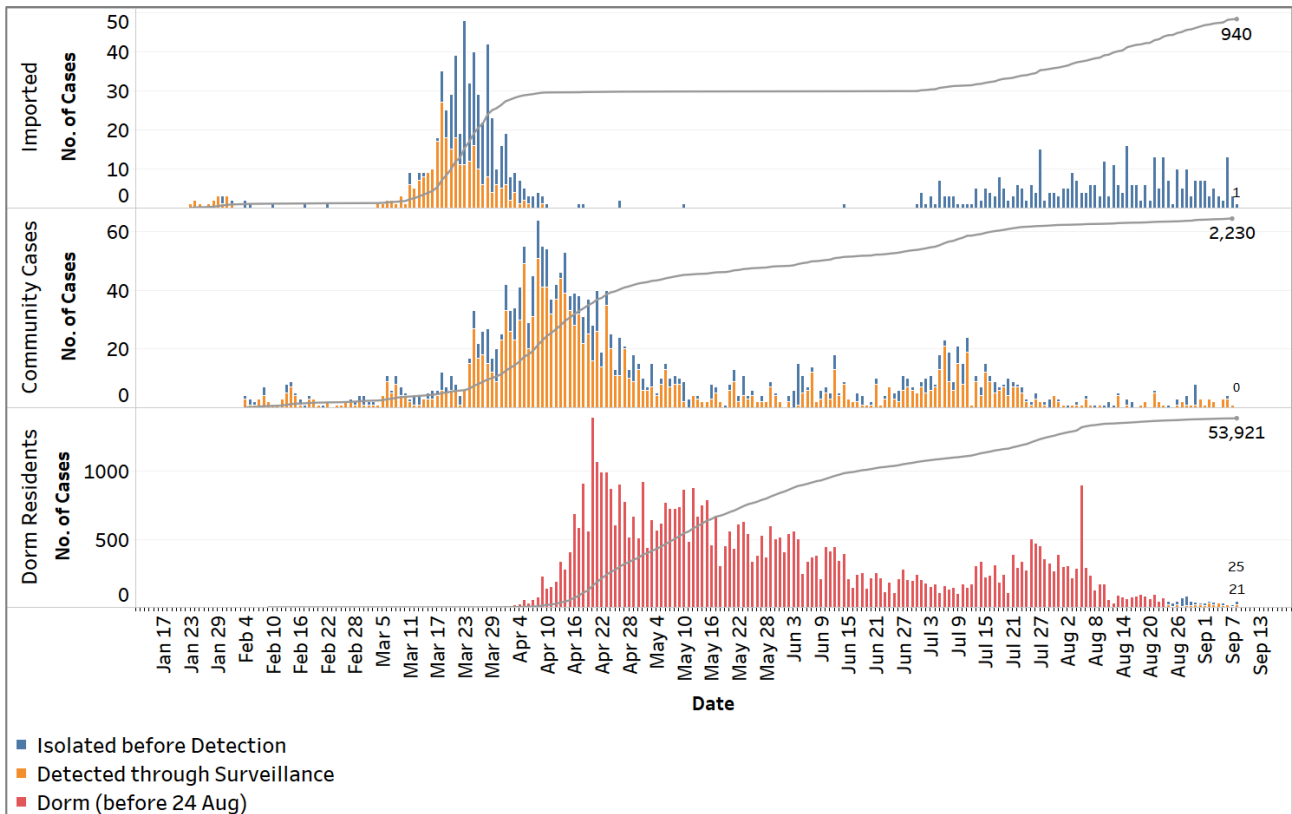


Figure 1.4: Epidemic Curve of Imported Cases by Press Release Date (left panel) and Arrival Date (right panel)

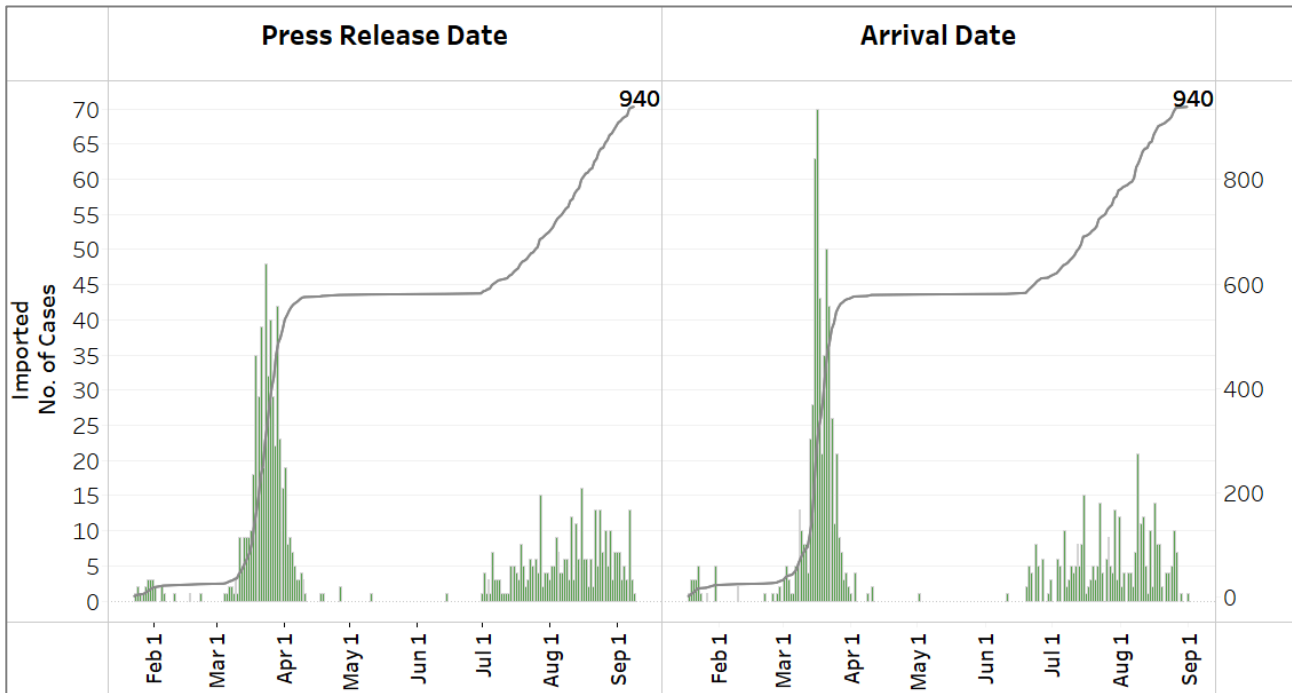
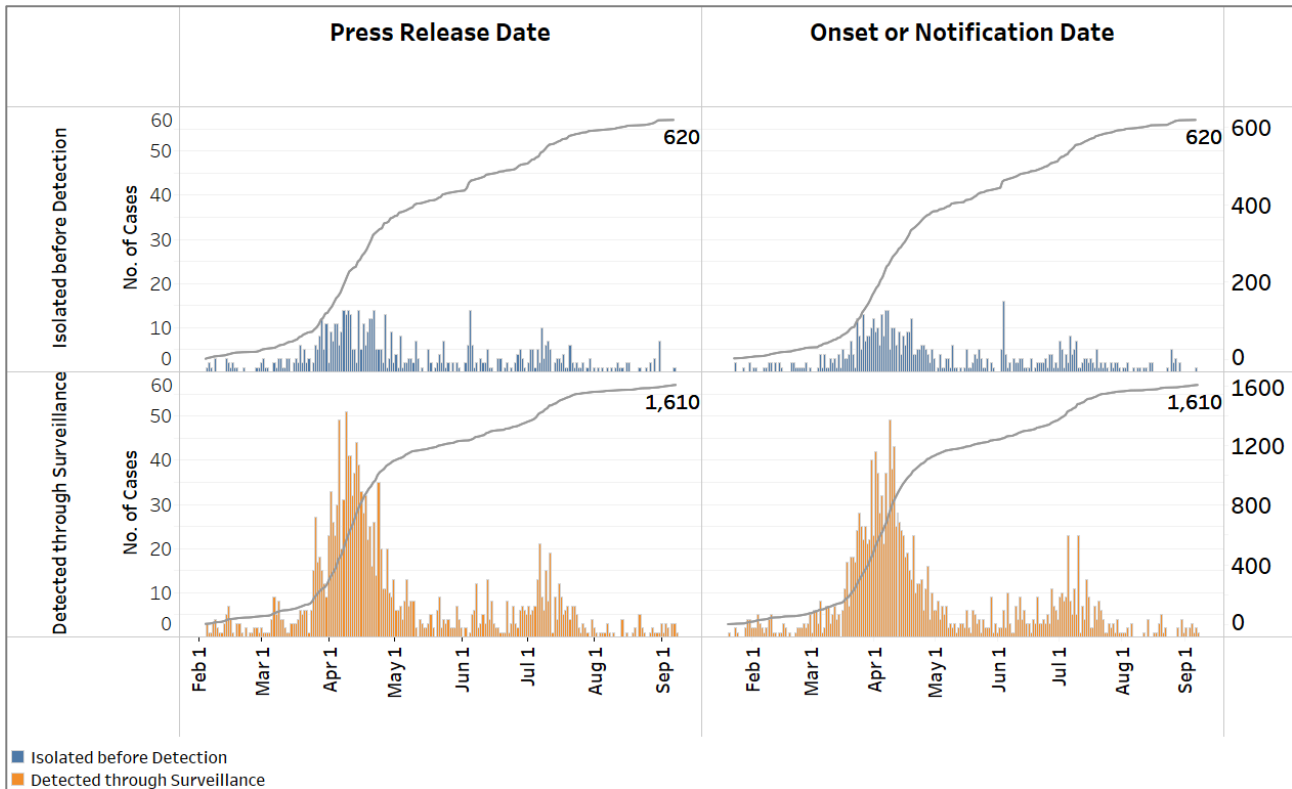
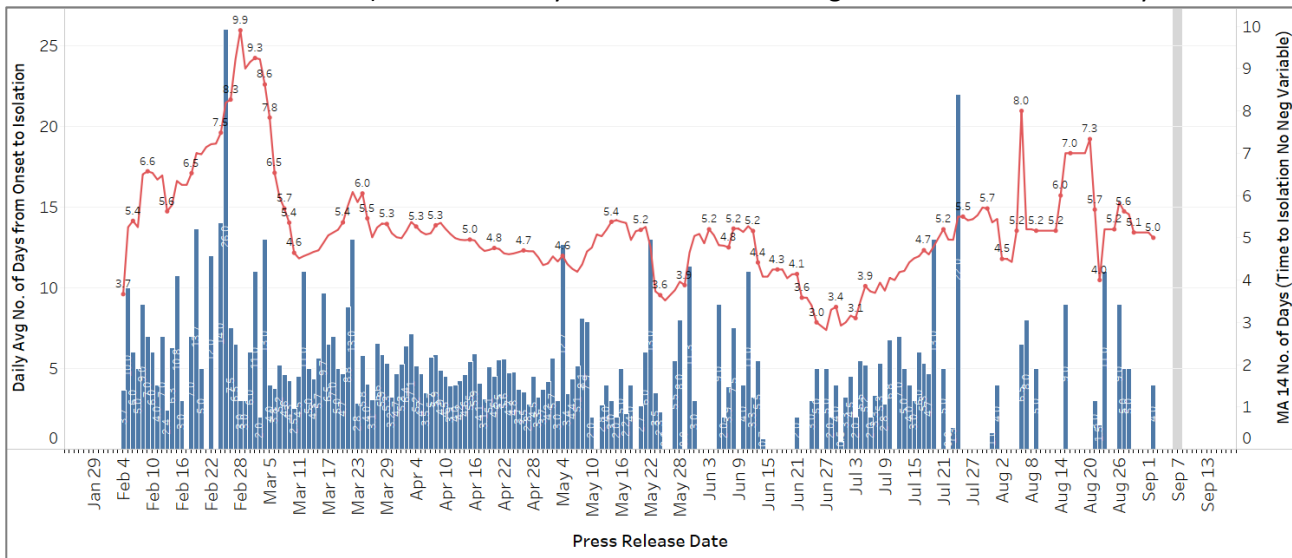


Figure 1.5: Epidemic Curve of Community Cases by Press Release Date (left panel) and by Symptom Onset or Notification Date⁷ (right panel)



⁷ Date of notification was used for cases that did not display any symptoms. The numbers with onset in the past few days may see an increase as more cases are notified.

Figure 1.6: Average Number of Days from Onset of Symptoms to Isolation (QO, hospital admission or notification to MOH) for Community Cases Detected through Surveillance in Each Day⁸



Line represents the 14-day moving average; Bar represents the daily average⁹

⁸ Area in grey demarcates the data points for the past 3 days where some cases are still pending investigation. The bar chart shows the daily average number of days from onset date to isolation, while the line chart shows the moving average for the past 14 days. Both charts exclude cases with missing onset dates in the computation of the average.

⁹ Asymptomatic community unlinked cases are not reflected in this chart. Community unlinked cases with symptoms who are isolated on the same day that symptoms occurred would have an isolation time of 0.

(2) Number of COVID-19 Cases in Hospitals and Community Care Facilities

Figure 2.1: Summary of Confirmed Cases by Status in the Past 14 Days

Press Release Date	Currently Admitted in Hospitals		In Care Facilities ¹⁰	Total Recovered		Total Demised	Total
	ICU	General Wards		Completed Isolation	Discharged from Hospital		
26-Aug	0	65	1,432	52,708	2,263	27	56,495
27-Aug	0	66	1,340	52,871	2,268	27	56,572
28-Aug	0	71	1,231	53,066	2,271	27	56,666
29-Aug	0	70	1,173	53,166	2,281	27	56,717
30-Aug	0	74	1,084	53,300	2,286	27	56,771
31-Aug	0	78	1,049	53,366	2,292	27	56,812
1-Sep	0	86	990	53,455	2,294	27	56,852
2-Sep	0	75	867	53,592	2,299	27	56,860
3-Sep	0	52	801	53,712	2,316	27	56,908
4-Sep	0	51	696	53,852	2,322	27	56,948
5-Sep	0	50	638	53,942	2,325	27	56,982
6-Sep	0	51	611	53,998	2,335	27	57,022
7-Sep	0	51	558	54,068	2,340	27	57,044
8-Sep	0	48	555	54,117	2,344	27	57,091

¹⁰ Community Care Facilities (i.e. D'Resort, EXPO, Big Box), Private Hospitals (i.e. Concord International Hospital, Mt Elizabeth Hospital, Gleneagles Hospital, Mt Elizabeth Novena Hospital, Parkway East Hospital), Community Hospitals (i.e. Bright Vision Hospital, St. Andrew's Community Hospital, Jurong Community Hospital) and other care facilities.

(3) Number of Stay-Home-Notice (SHN) Issued

Figure 3.1: Daily Number of SHN issued

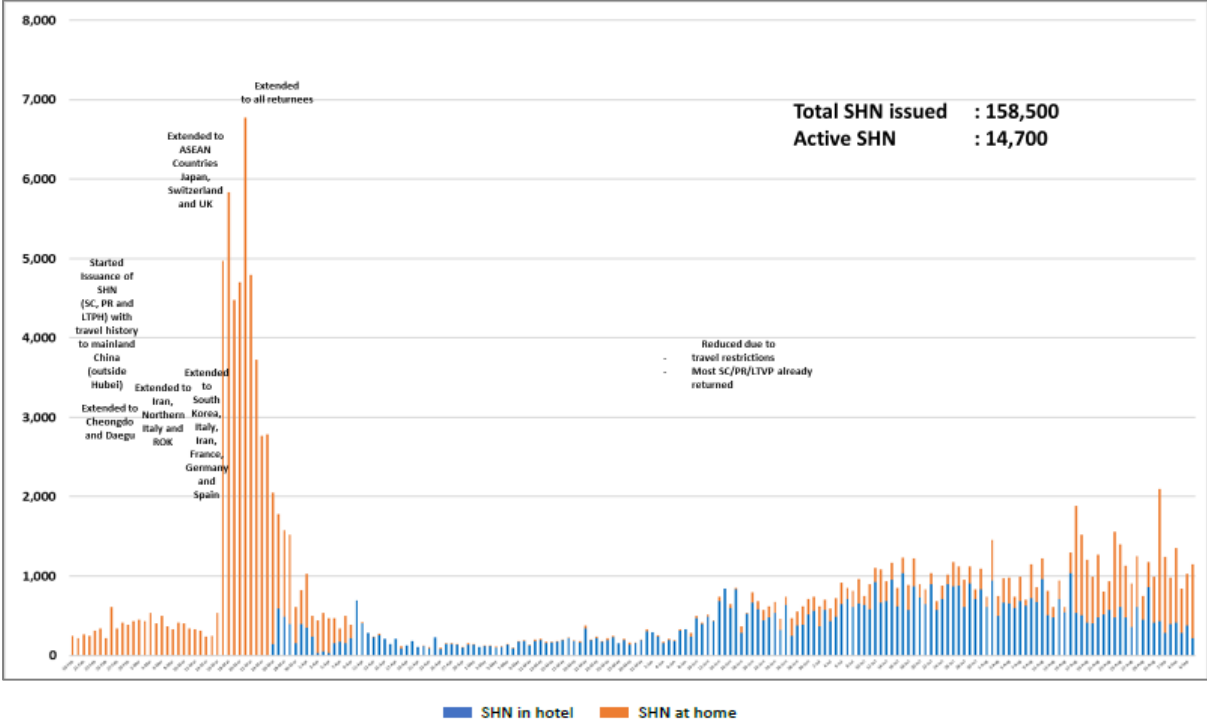
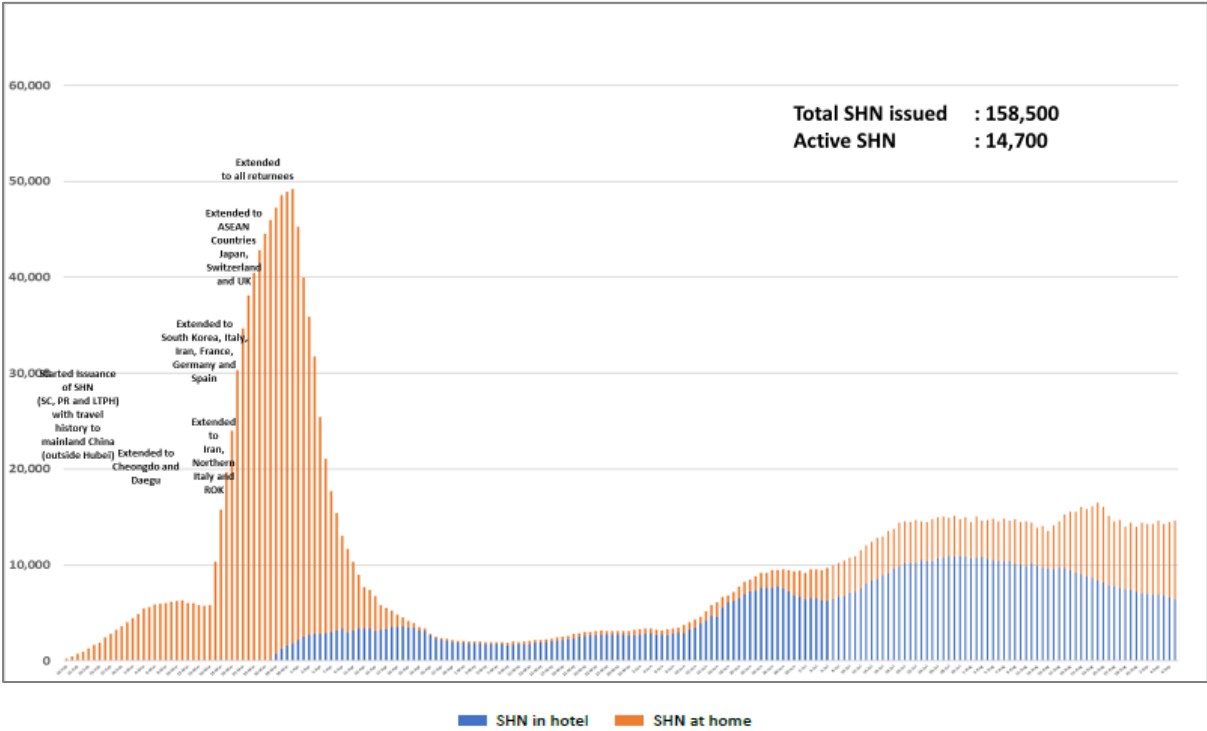


Figure 3.2: Active Stock Number of SHN (Home) and SHN (Hotel)



(4) Number of Quarantine Order (QO) Issued

Figure 4.1: Daily Number of QOs Issued

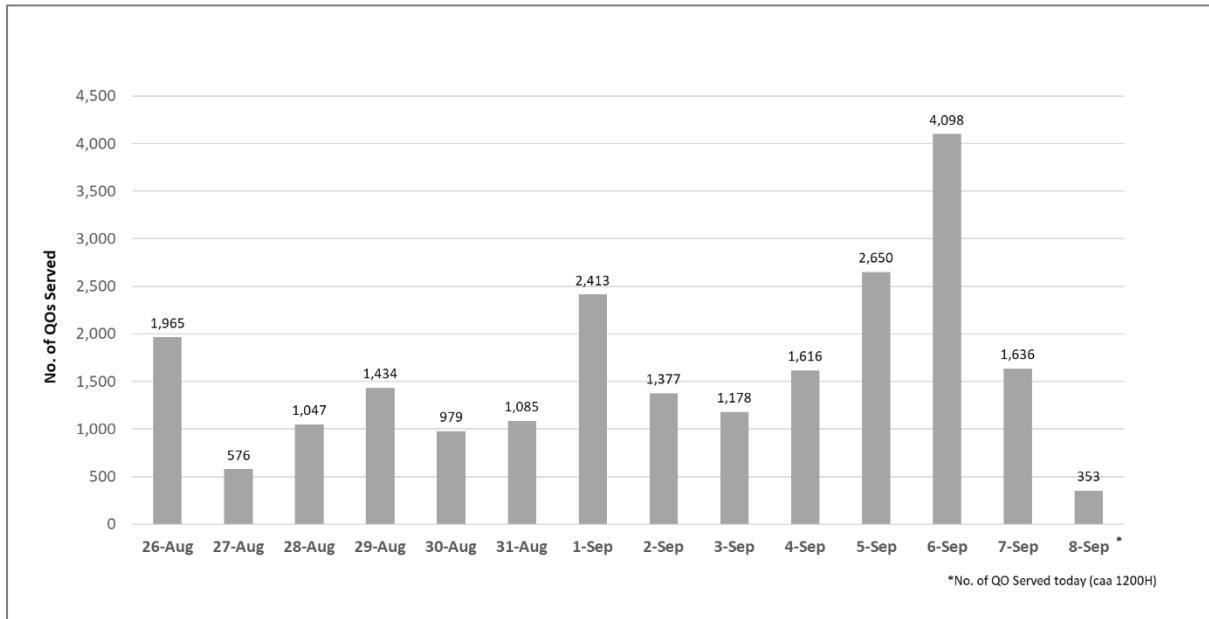


Figure 4.2: Active Number of Persons Under Quarantine (PUQs)

