

13 September 2020 Daily Report on COVID-19**(1) Number of COVID-19 Cases****Figure 1.1:** Breakdown of New Confirmed Cases in the Past 14 Days

| Press Release Date | Imported | | | Non-Imported Cases | | | | | | | | | | | | | All Cases | |
|-------------------------------|----------|---------------------------|-----------|--|--------|---------|-----------|--|--------|---------|-----------|-------------------------------|---|--|--|--------------|-----------|---|
| | Isolated | Not Isolated ³ | Sub-Total | Community Cases | | | | | | | | Dorm Residents ^{1,2} | | | | | | |
| | | | | Isolated before Detection ⁴ | | | | Detected through Surveillance ⁵ | | | | Sub-Total | Incidence Rate ⁶ (per 100,000) | Isolated before Detection ⁴ | Detected through Surveillance ⁵ | No. of Cases | | Incidence Rate ⁶ (per 100,000) |
| | | | | SC/PR | G or F | Visitor | Sub-Total | SC/PR | G or F | Visitor | Sub-Total | | | | | | | |
| Before 31-Aug | 624 | 272 | 896 | 362 | 256 | 1 | 619 | 982 | 603 | 9 | 1,594 | 2,213 | - | 53,621 | | 53,621 | - | 56,730 |
| 31-Aug | 7 | 0 | 7 | 0 | 0 | 0 | 0 | 0 | 3 | 0 | 3 | 3 | 0.056 | 15 | 16 | 31 | 9.6 | 41 |
| 1-Sep | 7 | 0 | 7 | 0 | 0 | 0 | 0 | 0 | 1 | 0 | 1 | 1 | 0.019 | 22 | 10 | 32 | 9.9 | 40 |
| 2-Sep | 3 | 0 | 3 | 0 | 0 | 0 | 0 | 1 | 2 | 0 | 3 | 3 | 0.056 | 14 | 29 | 43 | 13 | 49 |
| 3-Sep | 5 | 0 | 5 | 0 | 0 | 0 | 0 | 1 | 1 | 0 | 2 | 2 | 0.037 | 22 | 19 | 41 | 13 | 48 |
| 4-Sep | 3 | 0 | 3 | 0 | 0 | 0 | 0 | 0 | 0 | 0 | 0 | 0 | 0 | 5 | 32 | 37 | 11 | 40 |
| 5-Sep | 2 | 0 | 2 | 0 | 0 | 0 | 0 | 1 | 2 | 0 | 3 | 3 | 0.056 | 14 | 15 | 29 | 9.0 | 34 |
| 6-Sep | 13 | 0 | 13 | 0 | 1 | 0 | 1 | 0 | 3 | 0 | 3 | 4 | 0.074 | 5 | 18 | 23 | 7.1 | 40 |
| 7-Sep | 3 | 0 | 3 | 0 | 0 | 0 | 0 | 0 | 1 | 0 | 1 | 1 | 0.019 | 9 | 9 | 18 | 5.6 | 22 |
| 8-Sep | 1 | 0 | 1 | 0 | 0 | 0 | 0 | 0 | 0 | 0 | 0 | 0 | 0 | 25 | 21 | 46 | 14 | 47 |
| 9-Sep | 14 | 0 | 14 | 0 | 0 | 0 | 0 | 0 | 1 | 0 | 1 | 1 | 0.019 | 29 | 31 | 60 | 19 | 75 |
| 10-Sep | 6 | 0 | 6 | 1 | 0 | 0 | 1 | 0 | 1 | 0 | 1 | 2 | 0.037 | 26 | 29 | 55 | 17 | 63 |
| 11-Sep | 13 | 0 | 13 | 0 | 0 | 0 | 0 | 0 | 0 | 0 | 0 | 0 | 0 | 34 | 39 | 73 | 23 | 86 |
| 12-Sep | 10 | 0 | 10 | 0 | 1 | 0 | 1 | 1 | 2 | 0 | 3 | 4 | 0.074 | 16 | 12 | 28 | 8.7 | 42 |
| 13-Sep | 8 | 0 | 8 | 0 | 0 | 0 | 0 | 0 | 1 | 0 | 1 | 1 | 0.019 | 31 | 9 | 40 | 12 | 49 |
| Total since start of outbreak | 719 | 272 | 991 | 363 | 258 | 1 | 622 | 986 | 621 | 9 | 1,616 | 2,238 | - | 54,177 | | 54,177 | - | 57,406 |
| Population at risk | | | | | | | | | | | | 5,381,000 | | | | 323,000 | | 5,704,000 |
| Prevalence | | | | | | | | | | | | 0.04% | | | | 16.77% | | 1.01% |

¹ Includes PRs and visitors residing in dorms.² Breakdown of dorm cases into those detected through surveillance and those isolated before detection is not available before 24 Aug.³ All of these cases were reported before early Apr, and constitute the first wave of imported cases.⁴ Cases who were already quarantined and tested during quarantine to determine their status.⁵ Cases who were identified through surveillance testing, such as the bi-weekly Rostered Routine Testing (RRT) of at-risk workers and testing of those with Acute Respiratory Illness (ARI) symptoms.⁶ Incidence rates are rounded to two significant figures.

Figure 1.2: Epidemic Curve of the COVID-19 Outbreak by Press Release Date

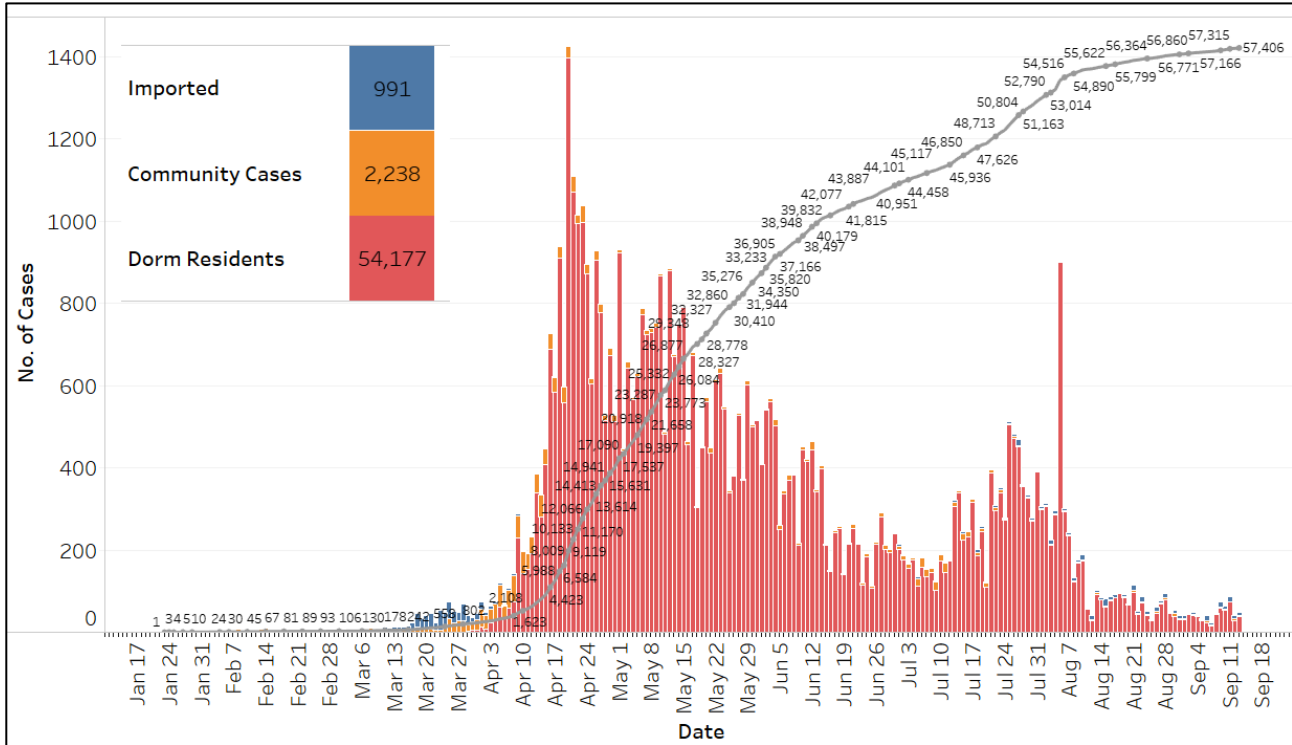


Figure 1.3: Epidemic Split Curve of the COVID-19 Outbreak by Press Release Date

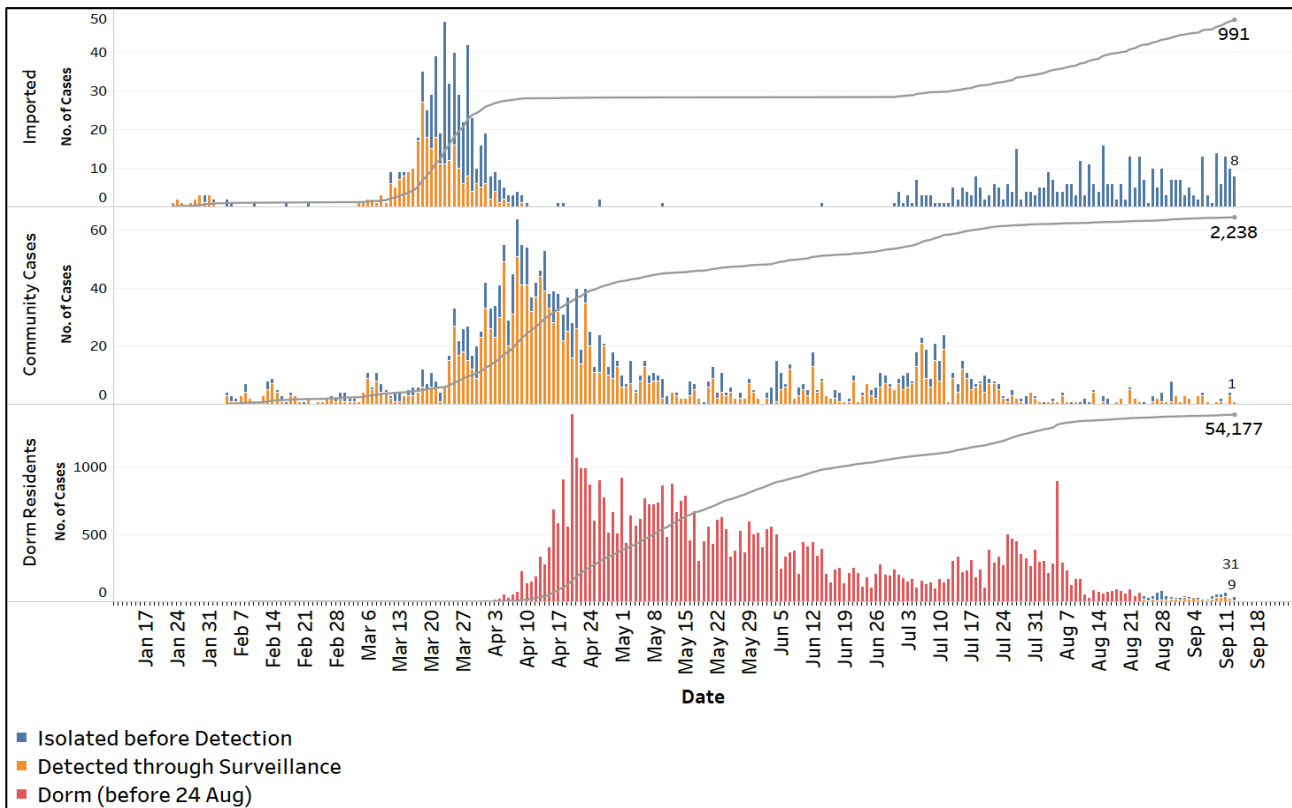


Figure 1.4: Epidemic Curve of Imported Cases by Press Release Date (left panel) and Arrival Date (right panel)

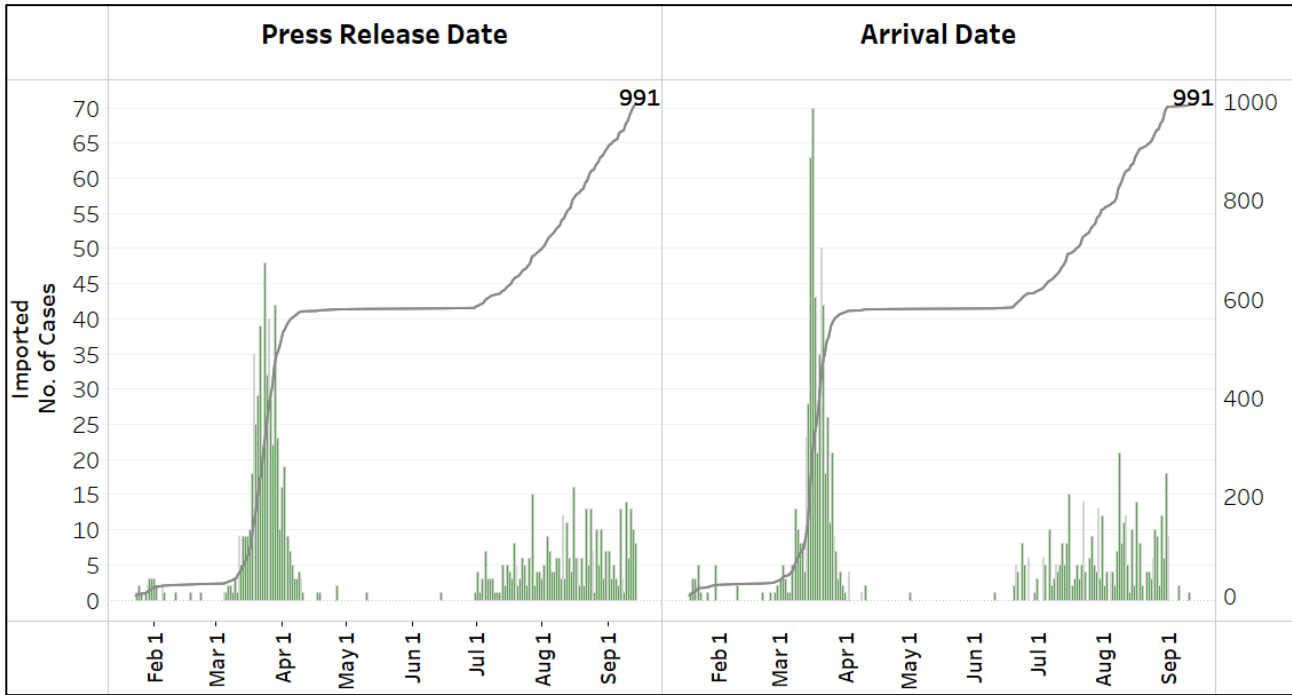
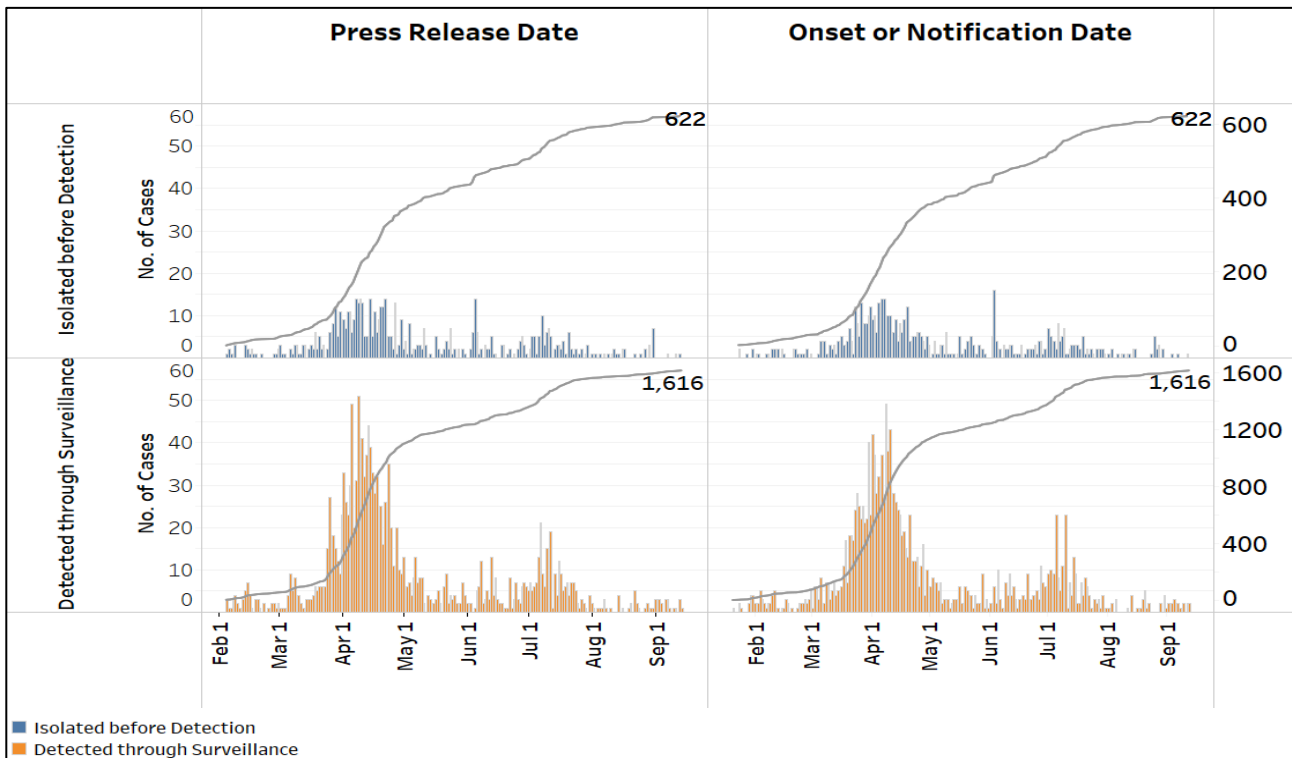
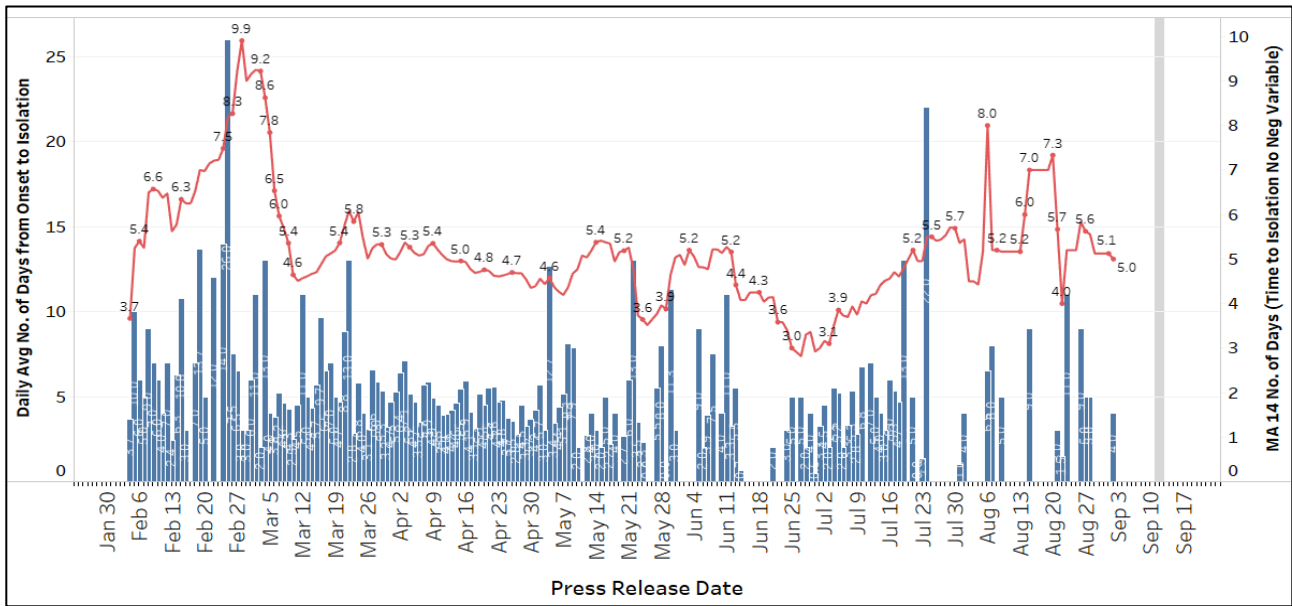


Figure 1.5: Epidemic Curve of Community Cases by Press Release Date (left panel) and by Symptom Onset or Notification Date⁷ (right panel)



⁷ Date of notification was used for cases that did not display any symptoms. The numbers with onset in the past few days may see an increase as more cases are notified.

Figure 1.6: Average Number of Days from Onset of Symptoms to Isolation (QO, hospital admission or notification to MOH) for Community Cases Detected through Surveillance in Each Day⁸



Line represents the 14-day moving average; Bar represents the daily average⁹

⁸ Area in grey demarcates the data points for the past 3 days where some cases are still pending investigation. The bar chart shows the daily average number of days from onset date to isolation, while the line chart shows the moving average for the past 14 days. Both charts exclude cases with missing onset dates in the computation of the average.

⁹ Asymptomatic community unlinked cases are not reflected in this chart. Community unlinked cases with symptoms who are isolated on the same day that symptoms occurred would have an isolation time of 0. There are no community cases detected through surveillance who are symptomatic after 2 Sep.

(2) Number of COVID-19 Cases in Hospitals and Community Care Facilities**Figure 2.1:** Summary of Confirmed Cases by Status in the Past 14 Days

| Press Release Date | Currently Admitted in Hospitals | | In Care Facilities ¹⁰ | Total Recovered | | Total Demised | Total |
|--------------------|---------------------------------|---------------|----------------------------------|---------------------|--------------------------|---------------|--------|
| | ICU | General Wards | | Completed Isolation | Discharged from Hospital | | |
| 31-Aug | 0 | 78 | 1,049 | 53,366 | 2,292 | 27 | 56,812 |
| 1-Sep | 0 | 86 | 990 | 53,455 | 2,294 | 27 | 56,852 |
| 2-Sep | 0 | 75 | 867 | 53,592 | 2,299 | 27 | 56,860 |
| 3-Sep | 0 | 52 | 801 | 53,712 | 2,316 | 27 | 56,908 |
| 4-Sep | 0 | 51 | 696 | 53,852 | 2,322 | 27 | 56,948 |
| 5-Sep | 0 | 50 | 638 | 53,942 | 2,325 | 27 | 56,982 |
| 6-Sep | 0 | 51 | 611 | 53,998 | 2,335 | 27 | 57,022 |
| 7-Sep | 0 | 51 | 558 | 54,068 | 2,340 | 27 | 57,044 |
| 8-Sep | 0 | 48 | 555 | 54,117 | 2,344 | 27 | 57,091 |
| 9-Sep | 0 | 34 | 613 | 54,136 | 2,356 | 27 | 57,166 |
| 10-Sep | 0 | 47 | 597 | 54,200 | 2,358 | 27 | 57,229 |
| 11-Sep | 0 | 49 | 632 | 54,243 | 2,364 | 27 | 57,315 |
| 12-Sep | 0 | 54 | 577 | 54,328 | 2,371 | 27 | 57,357 |
| 13-Sep | 0 | 60 | 555 | 54,387 | 2,377 | 27 | 57,406 |

¹⁰ Community Care Facilities (i.e. D'Resort, EXPO, Big Box), Private Hospitals (i.e. Concord International Hospital, Mt Elizabeth Hospital, Gleneagles Hospital, Mt Elizabeth Novena Hospital, Parkway East Hospital), Community Hospitals (i.e. Bright Vision Hospital, St. Andrew's Community Hospital) and other care facilities.

(3) Number of Stay-Home-Notice (SHN) Issued

Figure 3.1: Daily Number of SHN issued

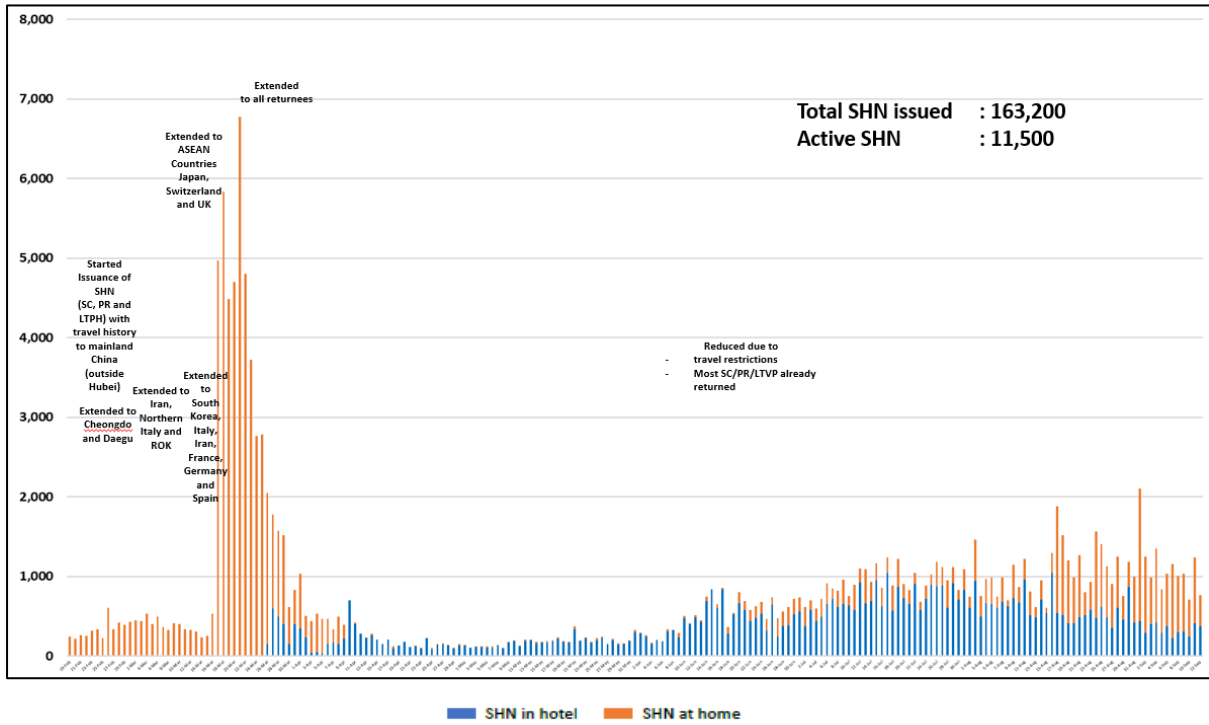
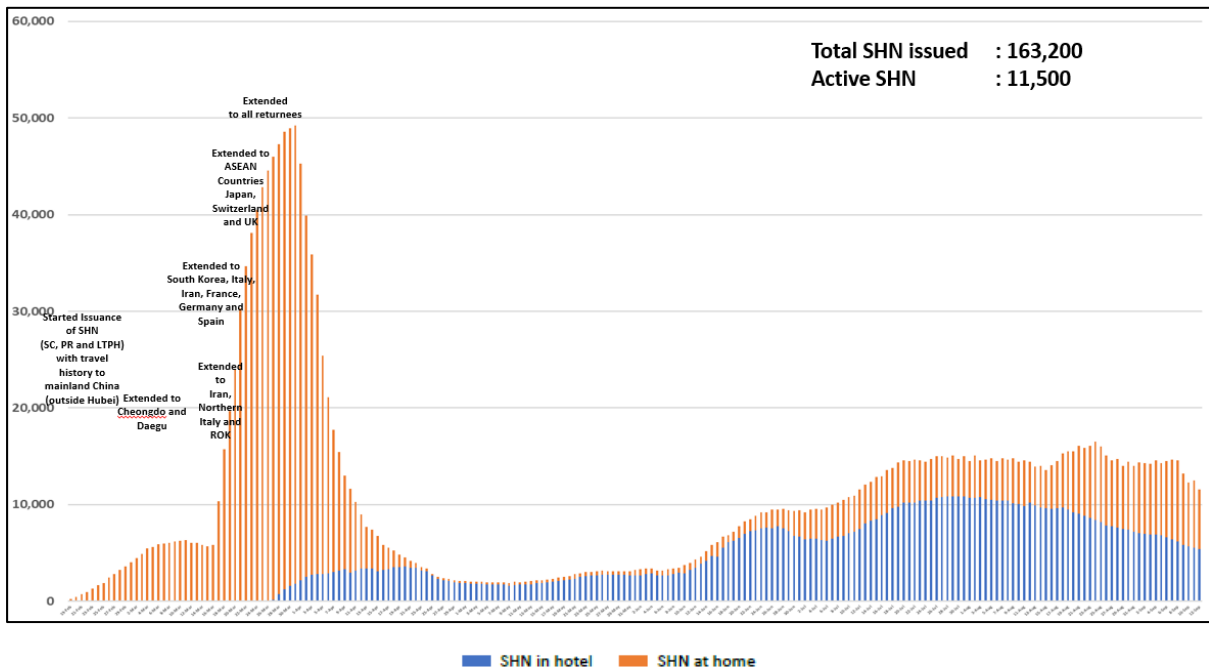


Figure 3.2: Active Stock Number of SHN (Home) and SHN (Hotel)



(4) Number of Quarantine Order (QO) Issued

Figure 4.1: Daily Number of QOs Issued

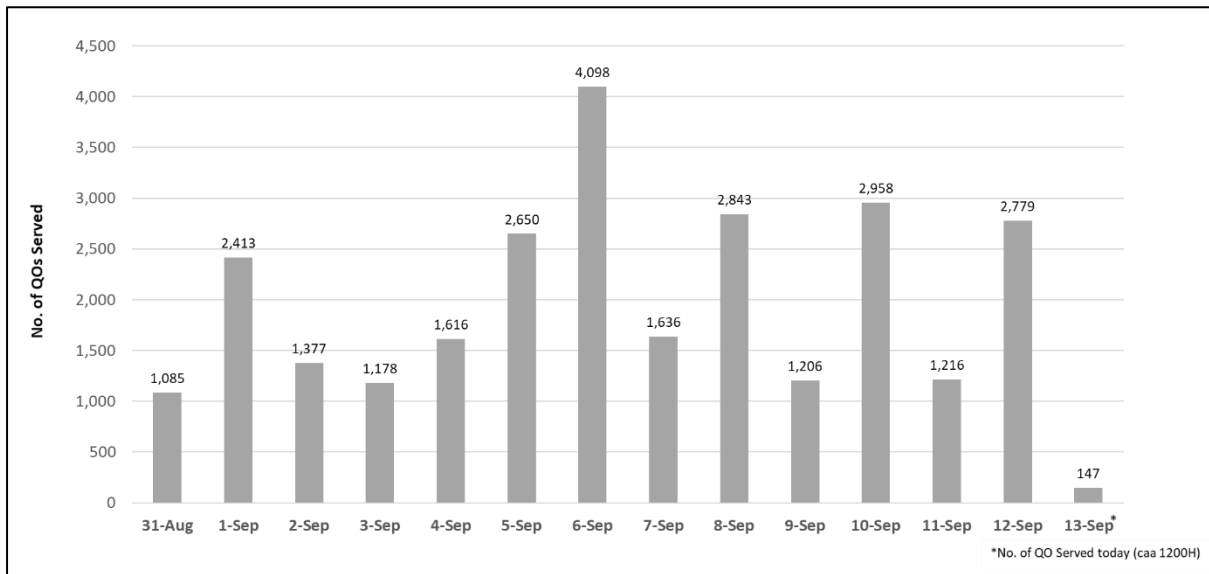


Figure 4.2: Active Number of Persons Under Quarantine (PUQs)

