

18 September 2020 Daily Report on COVID-19**(1) Number of COVID-19 Cases****Figure 1.1:** Breakdown of New Confirmed Cases in the Past 14 Days

Press Release Date	Imported			Non-Imported Cases														All Cases
	Isolated	Not Isolated ³	Sub-Total	Community Cases								Dorm Residents ^{1,2}						
				Isolated before Detection ⁴				Detected through Surveillance ⁵				Sub-Total	Incidence Rate ⁶ (per 100,000)	Isolated before Detection ⁴	Detected through Surveillance ⁵	No. of Cases	Incidence Rate ⁶ (per 100,000)	
				SC/PR	G or F	Visitor	Sub-Total	SC/PR	G or F	Visitor	Sub-Total							
Before 5-Sep	649	272	921	362	256	1	619	984	610	9	1,603	2,222	-	53,805		53,805	-	56,948
5-Sep	1	0	1	0	0	0	0	1	2	0	3	3	0.056	14	15	29	9.0	33
6-Sep	13	0	13	0	1	0	1	0	3	0	3	4	0.074	5	18	23	7.1	40
7-Sep	3	0	3	0	0	0	0	0	1	0	1	1	0.019	9	9	18	5.6	22
8-Sep	1	0	1	0	0	0	0	0	0	0	0	0	0	25	21	46	14	47
9-Sep	14	0	14	0	0	0	0	0	1	0	1	1	0.019	29	31	60	19	75
10-Sep	6	0	6	1	0	0	1	0	1	0	1	2	0.037	26	29	55	17	63
11-Sep	13	0	13	0	0	0	0	0	0	0	0	0	0	34	39	73	23	86
12-Sep	10	0	10	0	1	0	1	1	2	0	3	4	0.074	16	12	28	8.7	42
13-Sep	8	0	8	0	0	0	0	0	1	0	1	1	0.019	31	9	40	12	49
14-Sep	5	0	5	0	0	0	0	0	0	0	0	0	0	29	14	43	13	48
15-Sep	6	0	6	0	0	0	0	0	0	0	0	0	0	13	15	28	8.7	34
16-Sep	2	0	2	0	0	0	0	0	2	0	2	2	0.037	17	6	23	7.1	27
17-Sep	2	0	2	0	0	0	0	0	1	0	1	1	0.019	10	5	15	4.6	18
18-Sep	1	0	1	0	0	0	0	1	0	0	1	1	0.019	5	4	9	2.8	11
Total since start of outbreak	734	272	1,006	363	258	1	622	987	624	9	1,620	2,242	-	54,295		54,295	-	57,543
Population at risk												5,381,000				323,000		5,704,000
Prevalence												0.04%				16.81%		1.01%

¹ Includes PRs and visitors residing in dorms.² Breakdown of dorm cases into those detected through surveillance and those isolated before detection is not available before 24 Aug.³ All of these cases were reported before early Apr, and constitute the first wave of imported cases.⁴ Cases who were already quarantined and tested during quarantine to determine their status.⁵ Cases who were identified through surveillance testing, such as the bi-weekly Rostered Routine Testing (RRT) of at-risk workers and testing of those with Acute Respiratory Illness (ARI) symptoms.⁶ Incidence rates are rounded to two significant figures.

Figure 1.2: Epidemic Curve of the COVID-19 Outbreak by Press Release Date

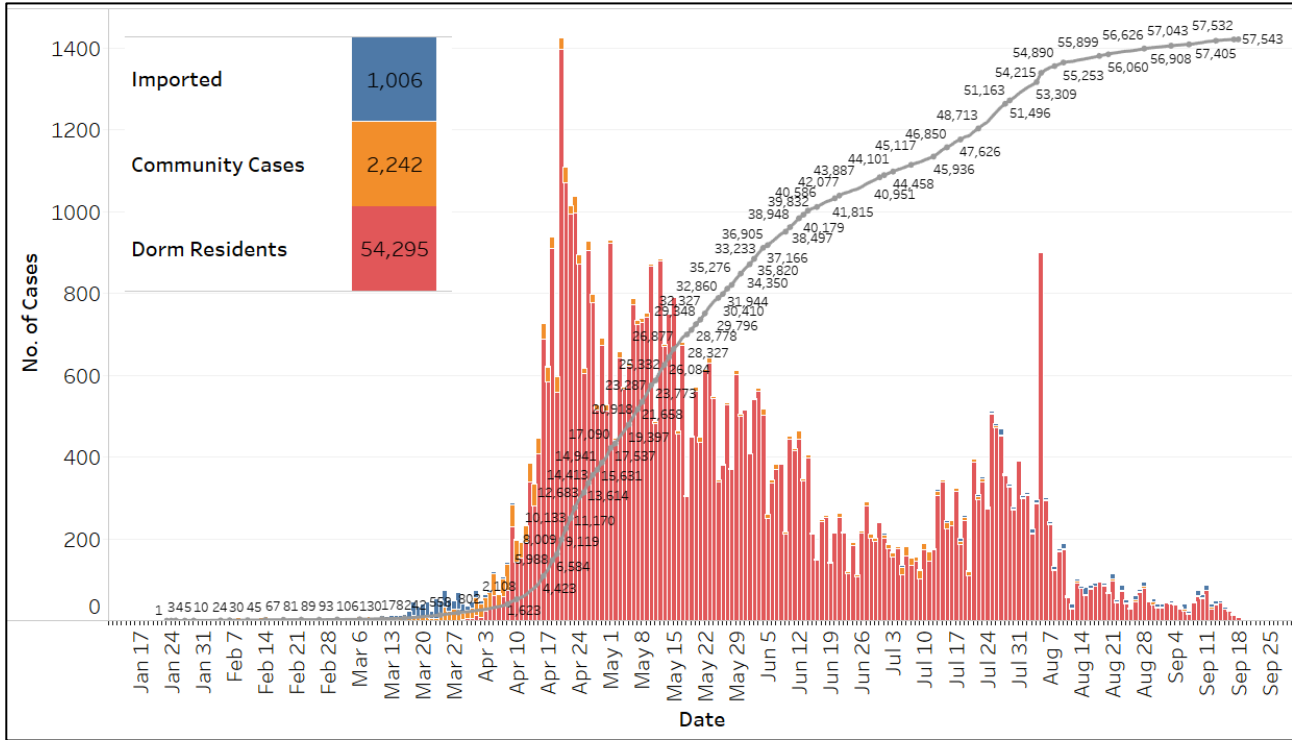


Figure 1.3: Epidemic Split Curve of the COVID-19 Outbreak by Press Release Date

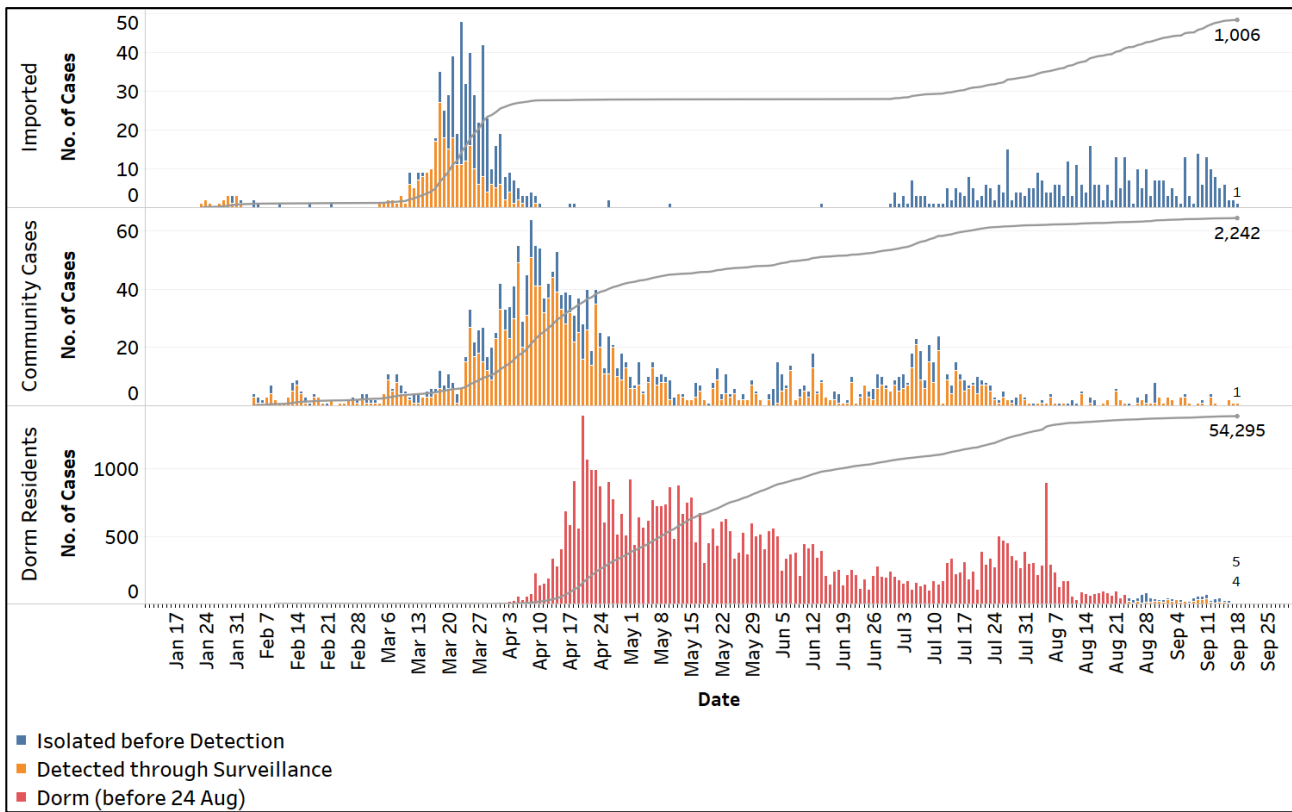


Figure 1.4: Epidemic Curve of Imported Cases by Press Release Date (left panel) and Arrival Date (right panel)

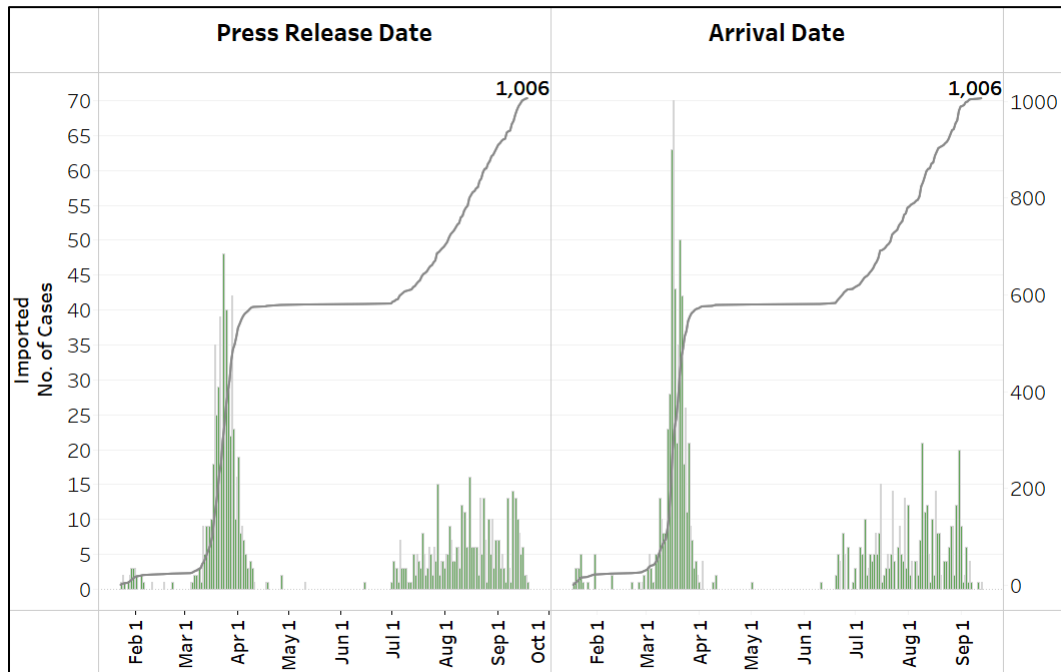
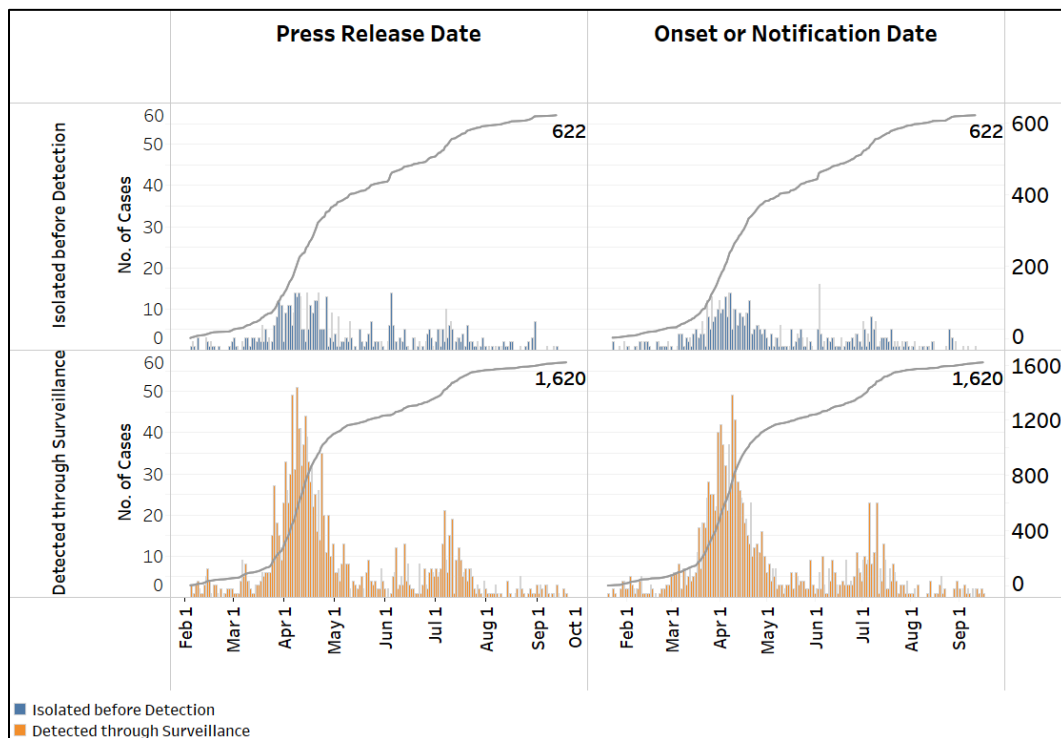
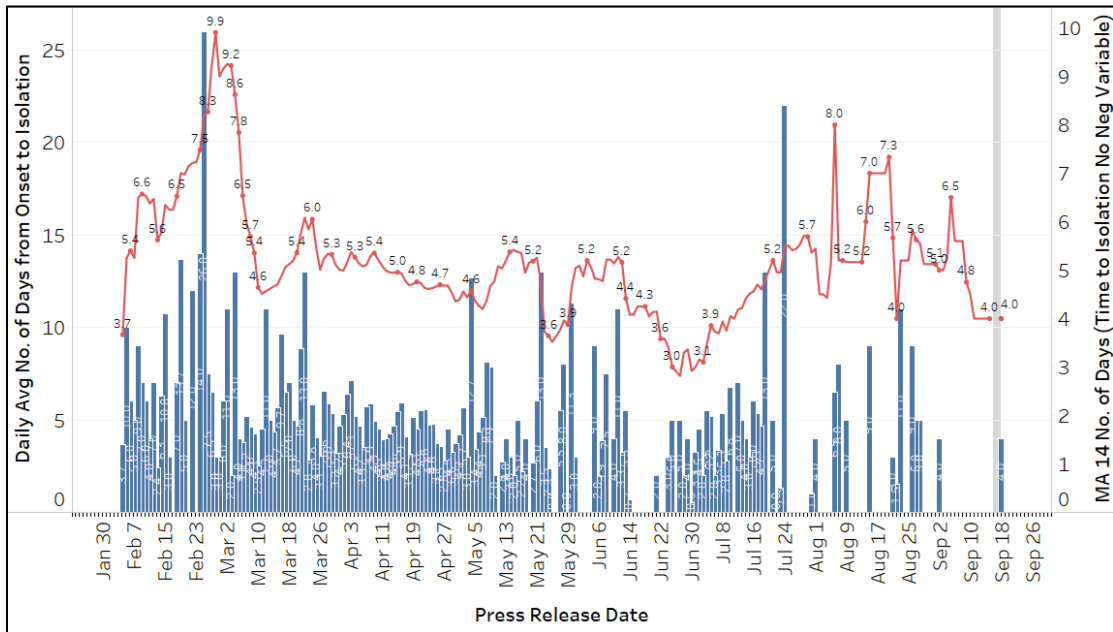


Figure 1.5: Epidemic Curve of Community Cases by Press Release Date (left panel) and by Symptom Onset or Notification Date⁷ (right panel)



⁷ Date of notification was used for cases that did not display any symptoms. The numbers with onset in the past few days may see an increase as more cases are notified.

Figure 1.6: Average Number of Days from Onset of Symptoms to Isolation (QO, hospital admission or notification to MOH) for Community Cases Detected through Surveillance in Each Day⁸



Line represents the 14-day moving average; Bar represents the daily average⁹

⁸ Area in grey demarcates data points for the past 3 days where some cases may still be pending epidemiological investigation. The bar graph shows the daily average number of days from symptoms onset to isolation, while the line graph shows the moving average for the past 14 days. Both graphs exclude cases with no onset date (asymptomatic) in the computation of the average.

⁹ Asymptomatic community cases are not reflected in this chart. Community cases with symptoms who are isolated on the same day that symptoms occurred would have an isolation time of 0.

(2) Number of COVID-19 Cases in Hospitals and Community Care Facilities**Figure 2.1:** Summary of Confirmed Cases by Status in the Past 14 Days

Press Release Date	Currently Admitted in Hospitals		In Care Facilities ¹⁰	Total Recovered		Total Demised	Total
	ICU	General Wards		Completed Isolation	Discharged from Hospital		
5-Sep	0	50	638	53,942	2,325	27	56,982
6-Sep	0	51	611	53,998	2,335	27	57,022
7-Sep	0	51	558	54,068	2,340	27	57,044
8-Sep	0	48	555	54,117	2,344	27	57,091
9-Sep	0	34	613	54,136	2,356	27	57,166
10-Sep	0	47	597	54,200	2,358	27	57,229
11-Sep	0	49	632	54,243	2,364	27	57,315
12-Sep	0	54	577	54,328	2,371	27	57,357
13-Sep	0	60	555	54,387	2,377	27	57,406
14-Sep	0	53	572	54,415	2,387	27	57,454
15-Sep	0	51	526	54,495	2,389	27	57,488
16-Sep	0	42	490	54,556	2,399	27	57,514
17-Sep	0	43	423	54,634	2,405	27	57,532
18-Sep	0	38	407	54,658	2,413	27	57,543

¹⁰ Community Care Facilities (i.e. D'Resort, EXPO, Big Box), Private Hospitals (i.e. Concord International Hospital, Mt Elizabeth Hospital, Gleneagles Hospital, Mt Elizabeth Novena Hospital, Parkway East Hospital), Community Hospitals (i.e. Bright Vision Hospital, St. Andrew's Community Hospital) and other care facilities.

(3) Number of Stay-Home-Notice (SHN) Issued

Figure 3.1: Daily Number of SHN issued

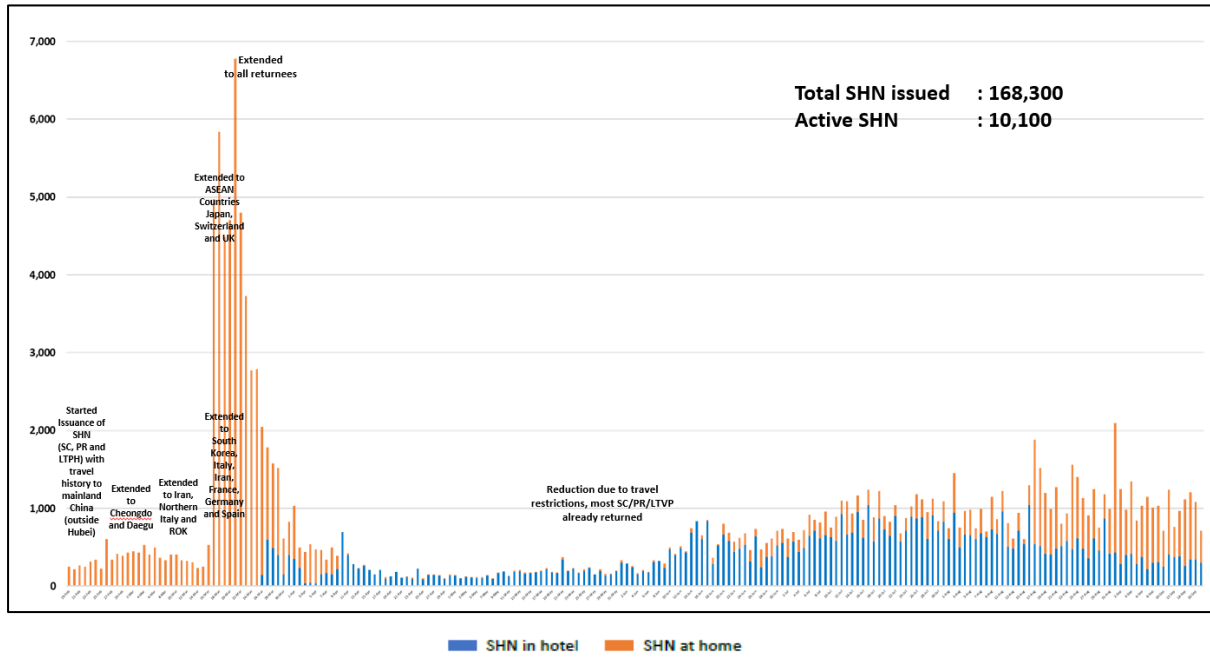
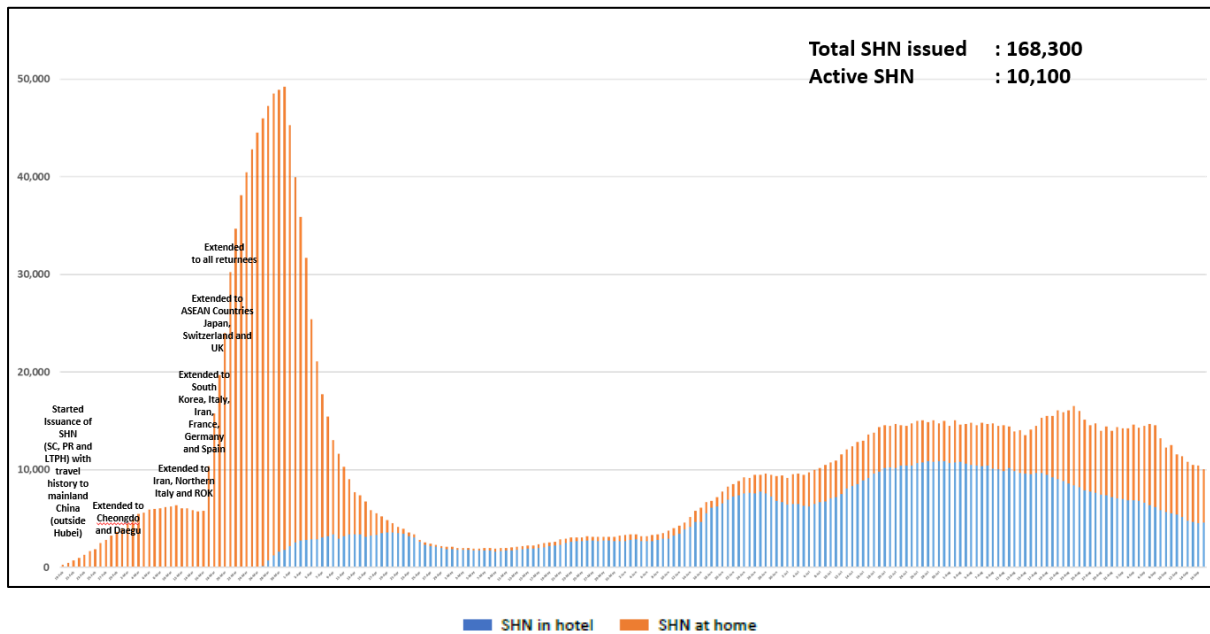


Figure 3.2: Active Stock Number of SHN (Home) and SHN (Hotel)



(4) Number of Quarantine Order (QO) Issued

Figure 4.1: Daily Number of QOs Issued

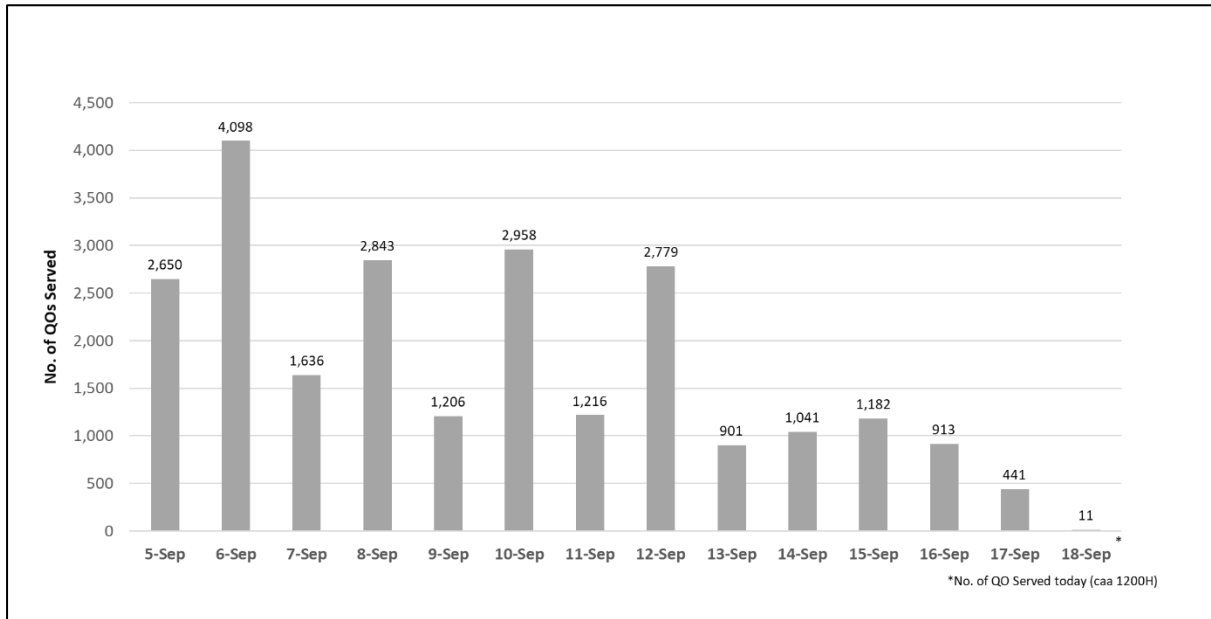


Figure 4.2: Active Number of Persons Under Quarantine (PUQs)

