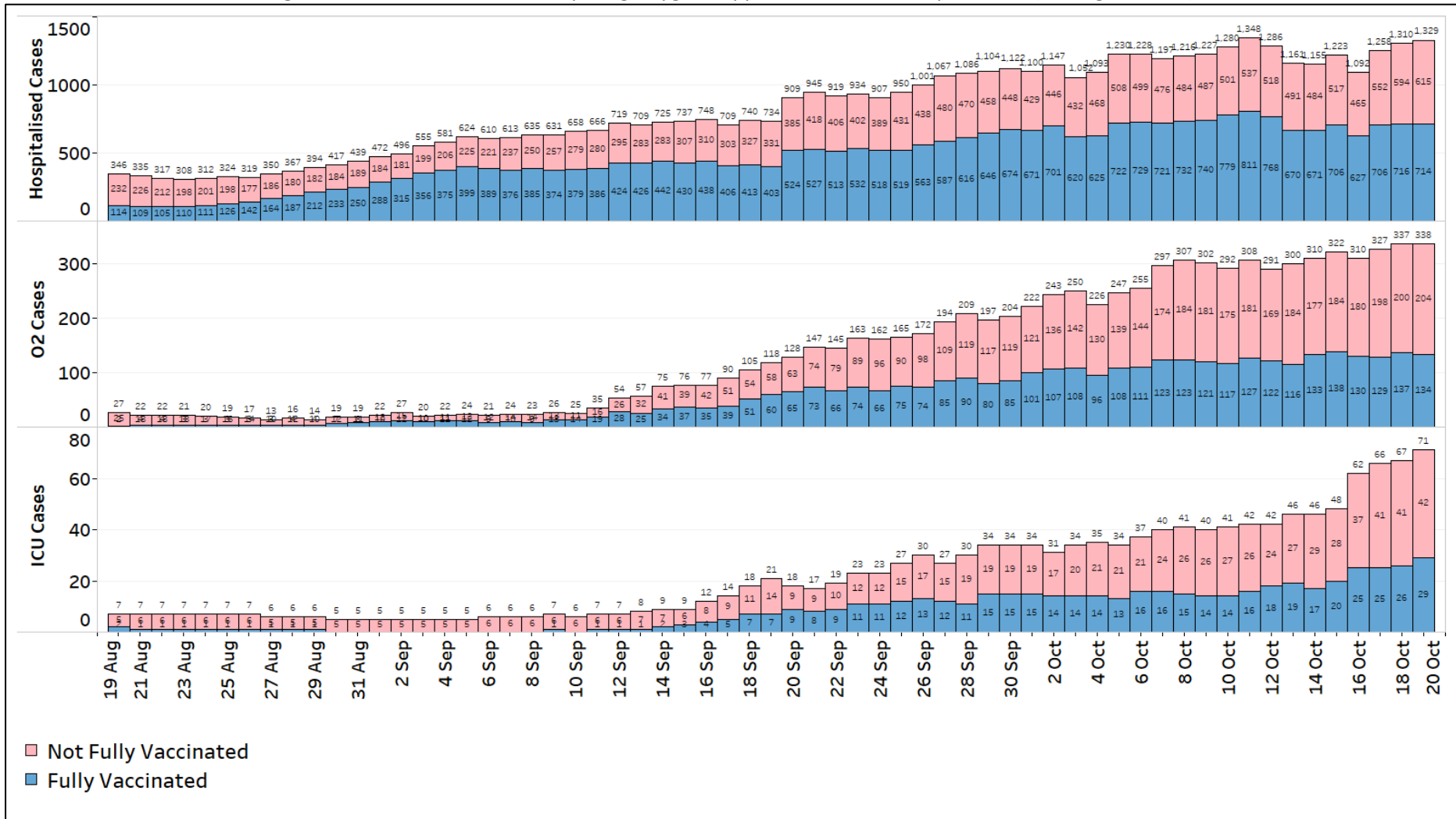




**Figure 2:** Active Cases in ICU, Requiring Oxygen Supplementation or Hospitalised<sup>1</sup> (20 Aug – 19 Oct)



<sup>1</sup> Not fully vaccinated status includes persons who are partially vaccinated and completely unvaccinated.

**Figure 3:** Deaths, Admissions into ICU and Discharges from ICU Among Local Cases by Notification Date

