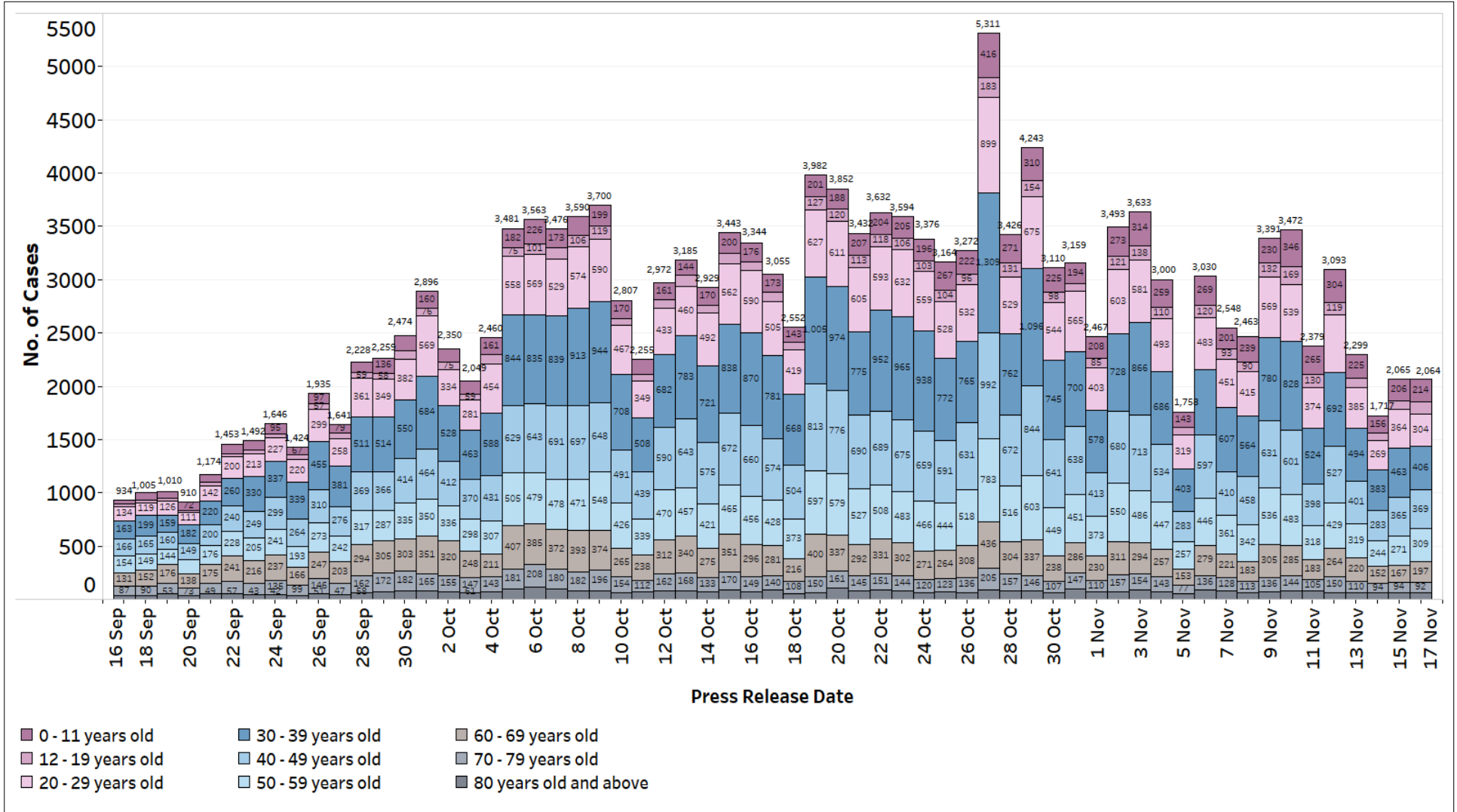
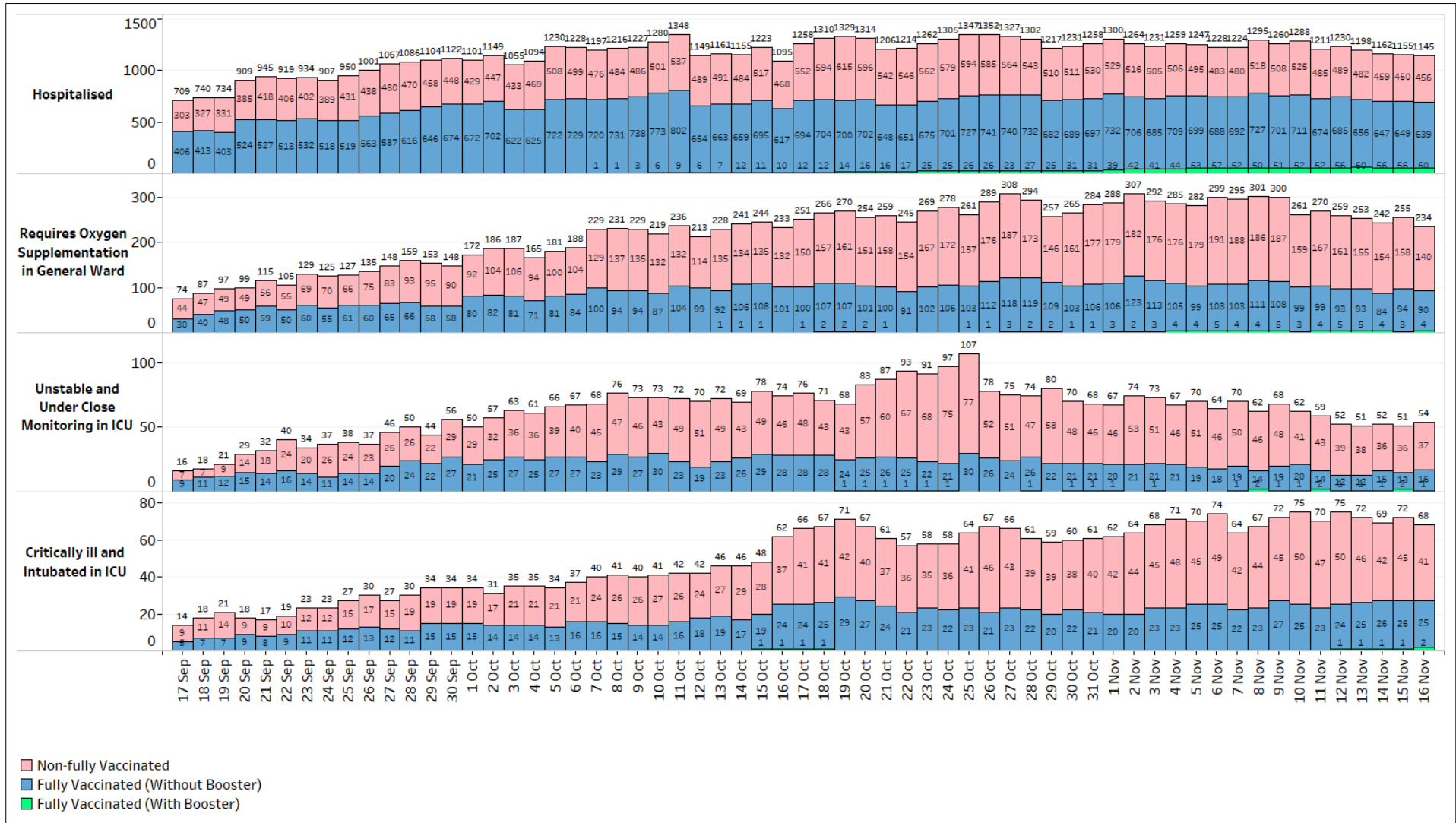


**16 November 2021 Daily Report on COVID-19**

**Figure 1: Number of Local Cases by Age (17 Sep – 16 Nov)**

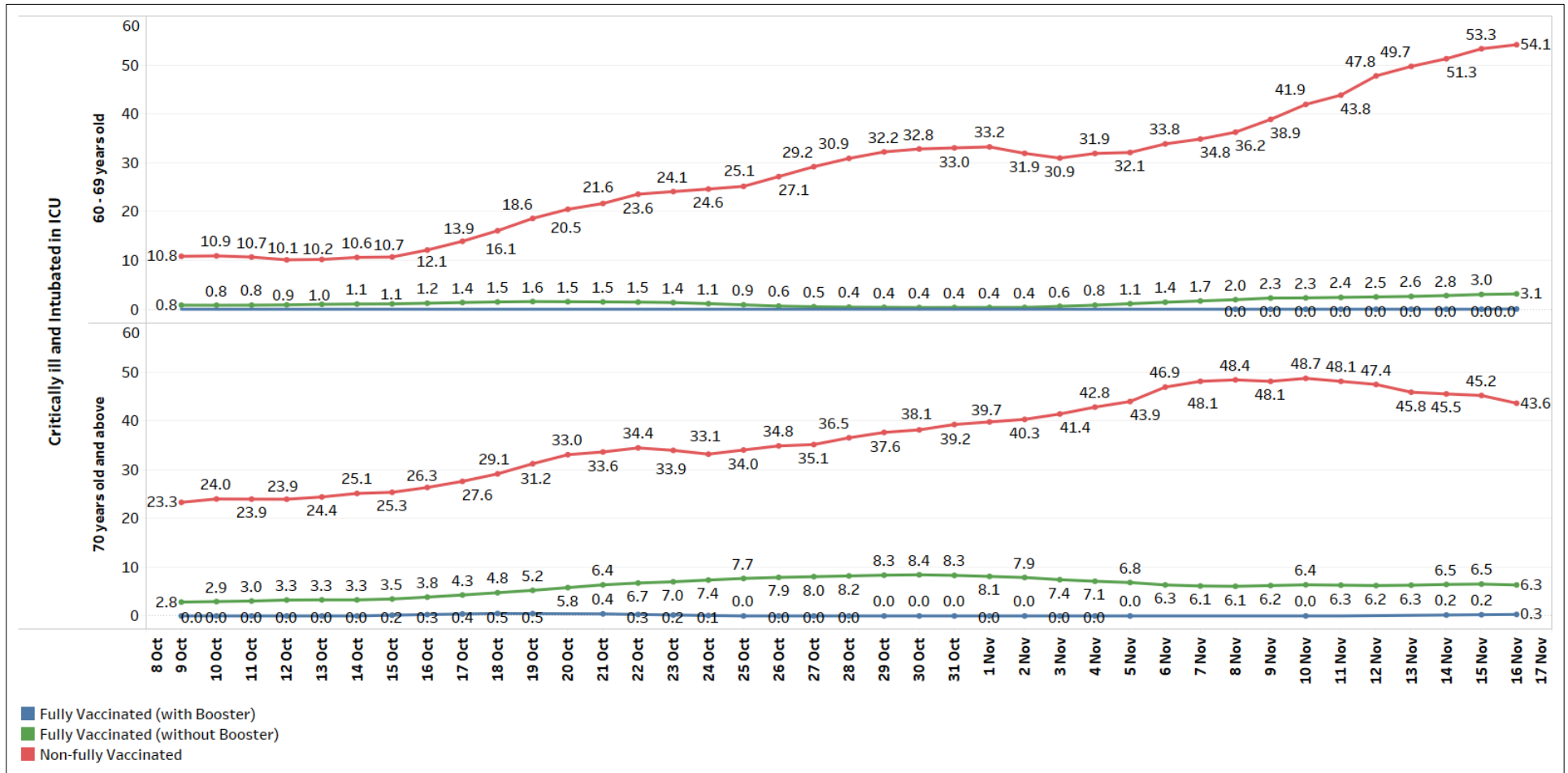


**Figure 2: Active Cases in ICU, Requiring Oxygen Supplementation or Hospitalised<sup>1</sup> (17 Sep – 16 Nov)**

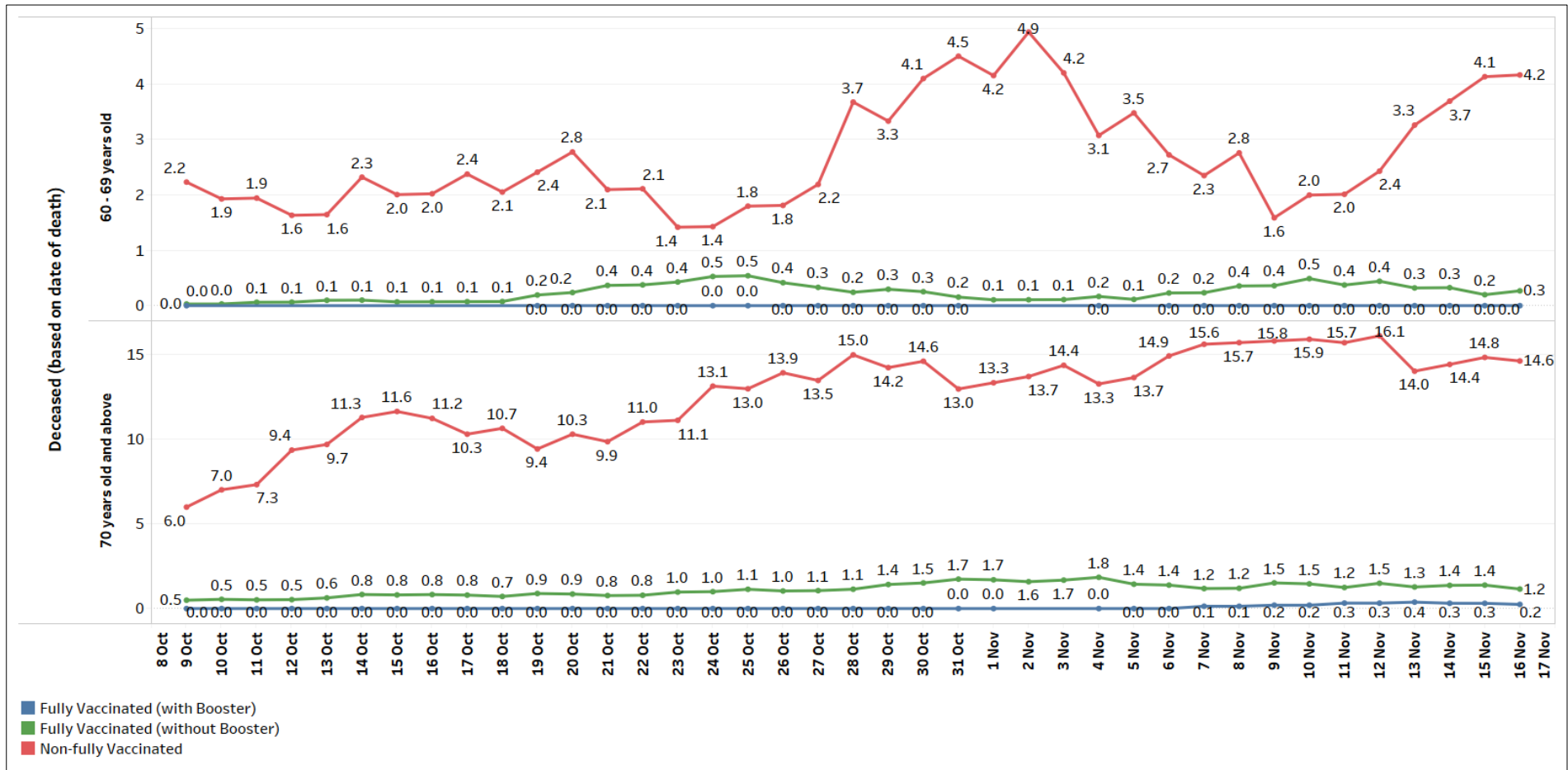


<sup>1</sup> Non-fully vaccinated status includes persons who are partially vaccinated and completely unvaccinated.

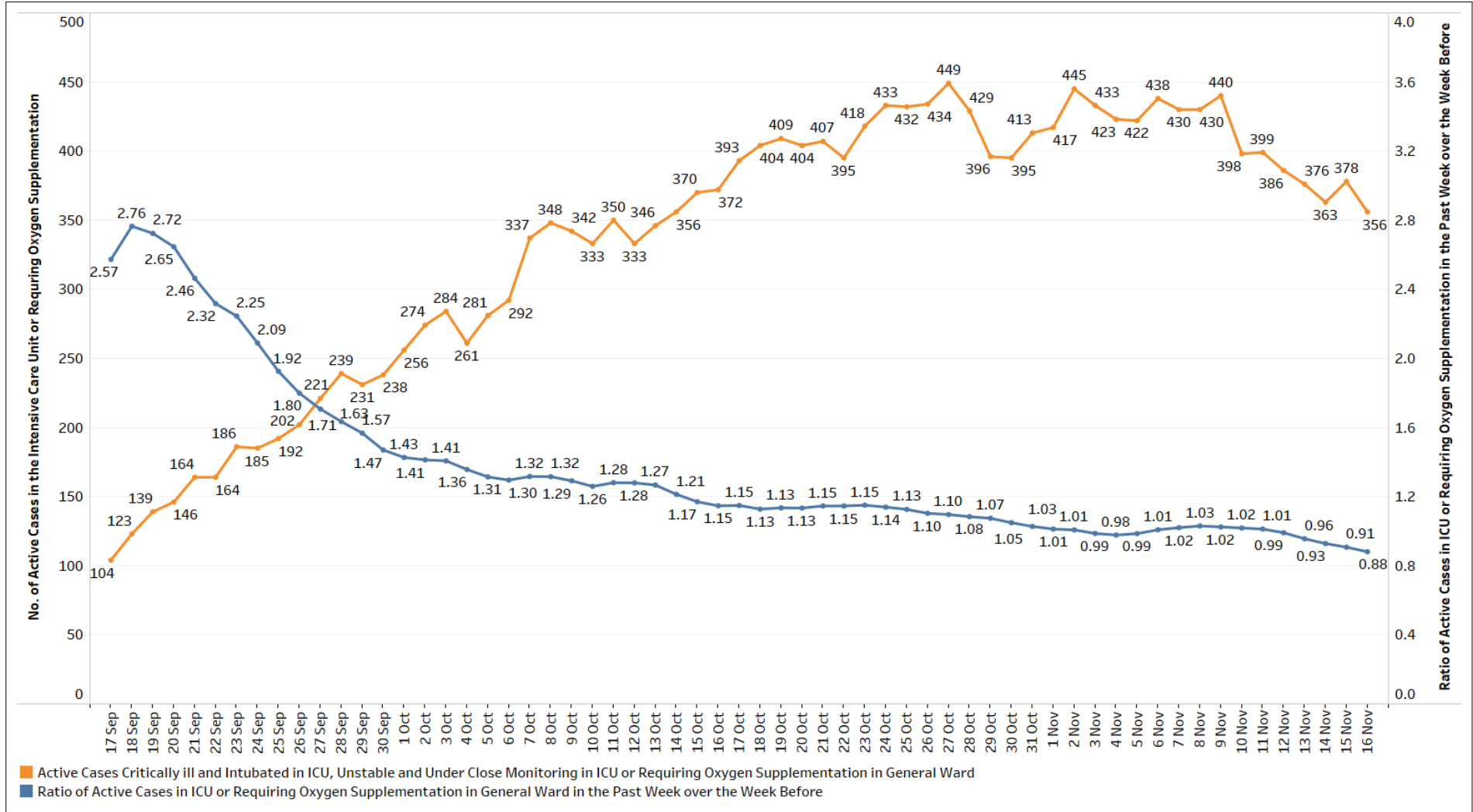
**Figure 3:** 7-Day Moving Average of Number of Active Cases between 60 – 69, and 70 years old and Above that are Critically ill and Intubated in ICU, per 100,000 Population by Vaccination Status (9 Oct – 16 Nov)



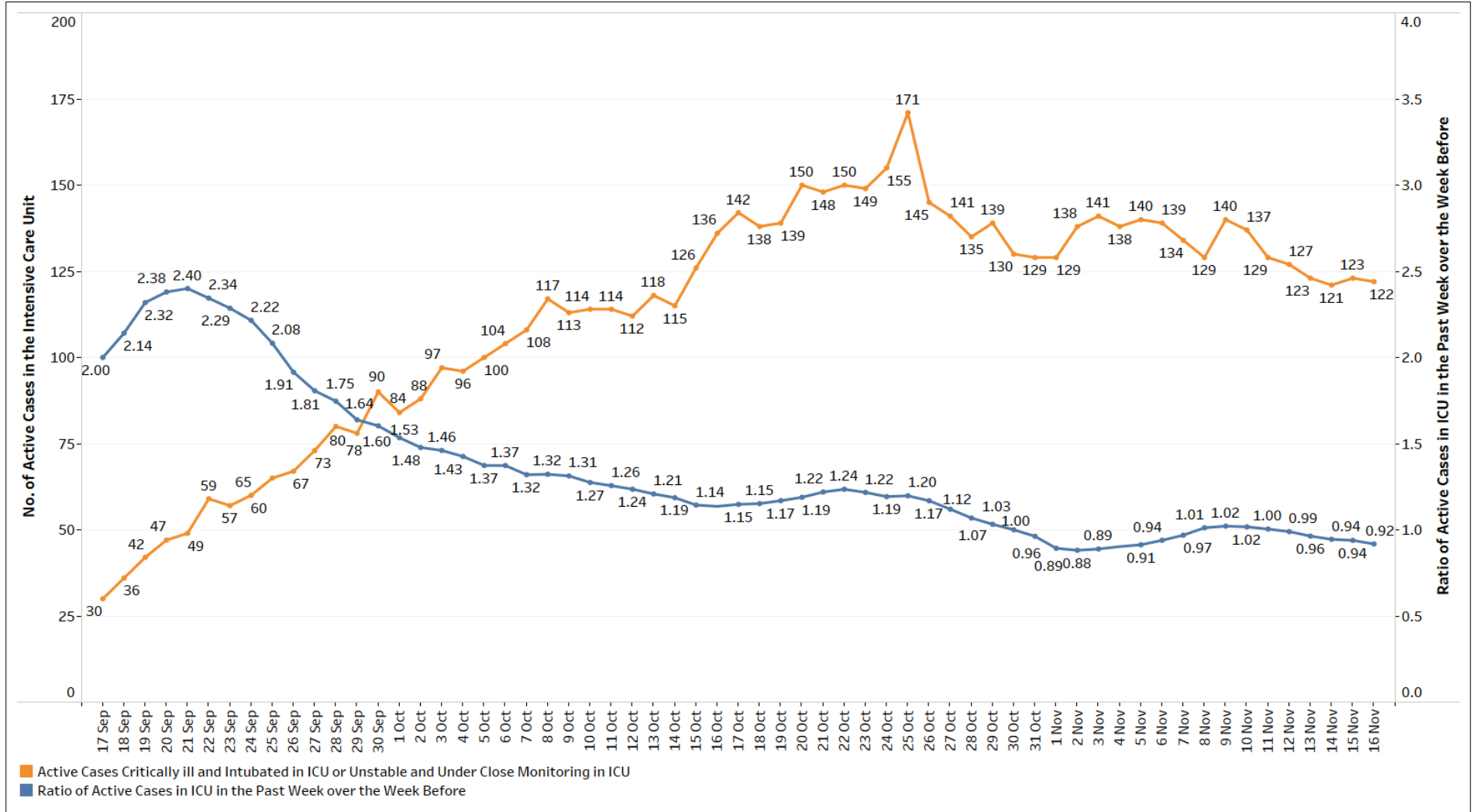
**Figure 4:** 7-Day Moving Average of Number of Deaths between 60 – 69, and 70 years old and Above, per 100,000 Population by Vaccination Status (9 Oct – 16 Nov)



**Figure 5: General Wards O2 + ICU (Intubated + Close Monitoring), Number of Cases and Week-on-Week Ratio of Cases (17 Sep – 16 Nov)**



**Figure 6:** ICU (Intubated + Close Monitoring), Number of Cases and Week-on-Week Ratio of Cases (17 Sep – 16 Nov)



**Figure 7:** Deaths, Admissions into ICU and Discharges from ICU Among Local Cases by Notification Date

