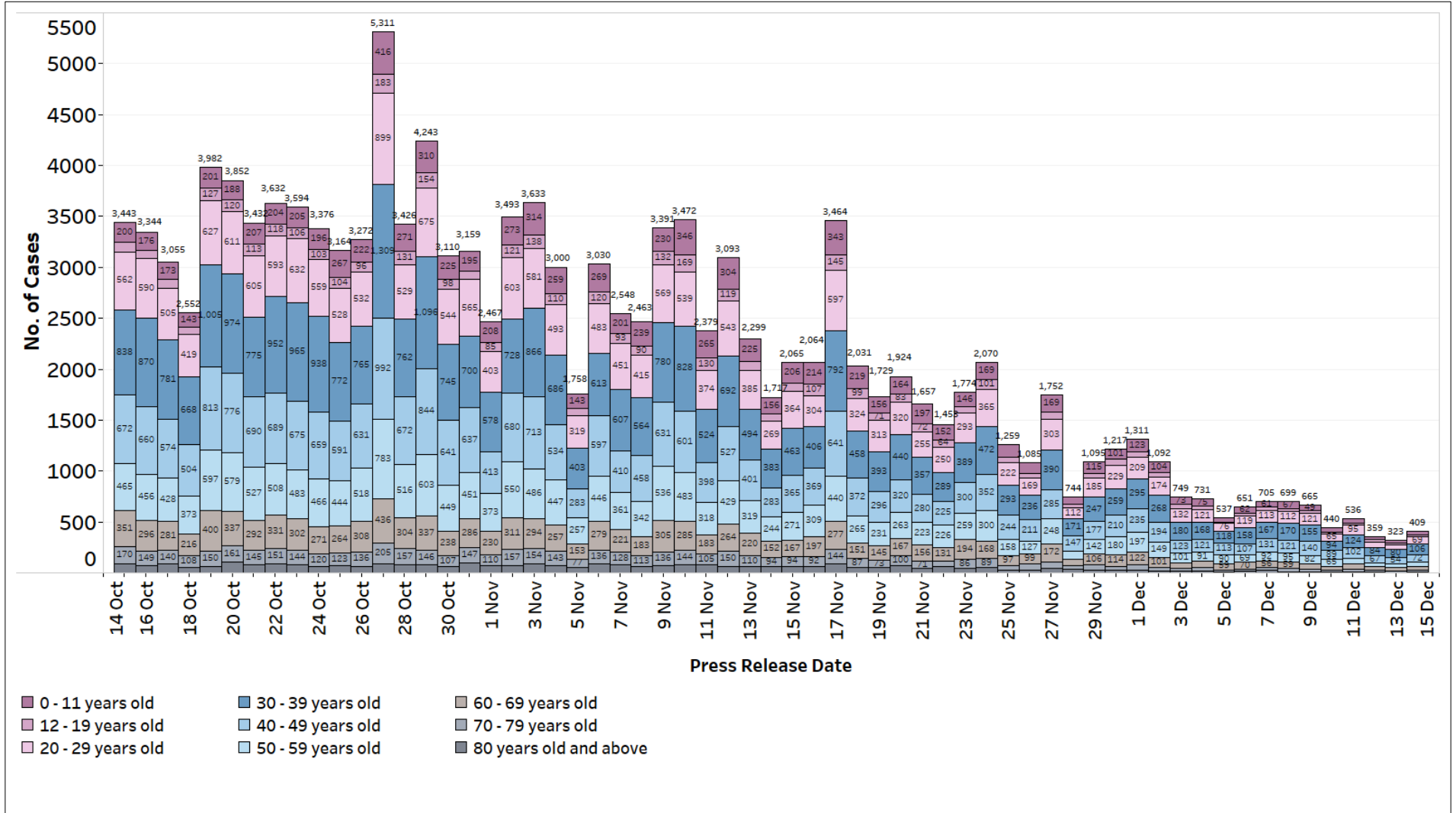
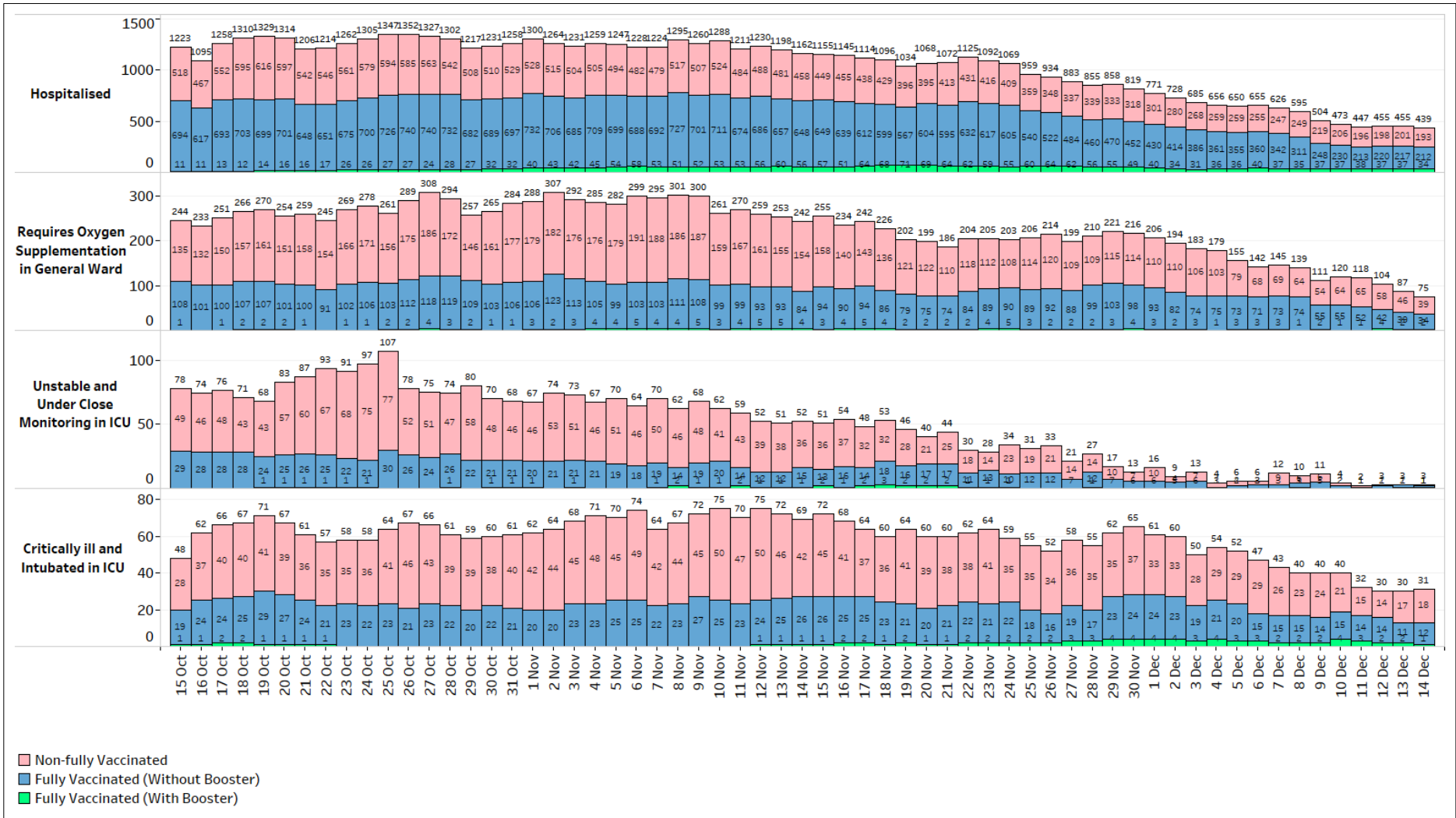


### 14 December 2021 Daily Report on COVID-19

**Figure 1:** Number of Local Cases by Age (15 Oct – 14 Dec)

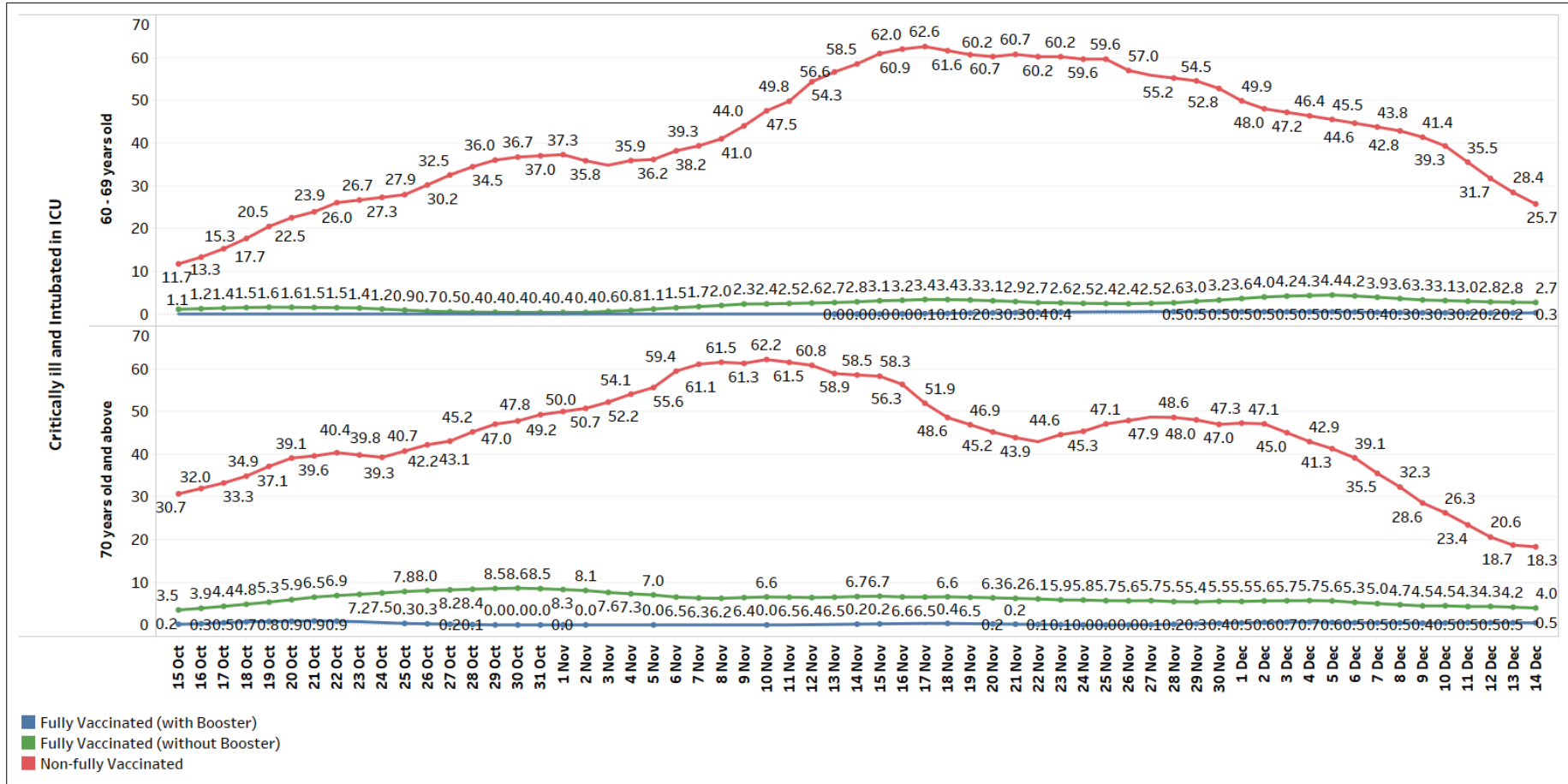


**Figure 2: Active Cases in ICU, Requiring Oxygen Supplementation or Hospitalised<sup>1</sup> (15 Oct – 14 Dec)**



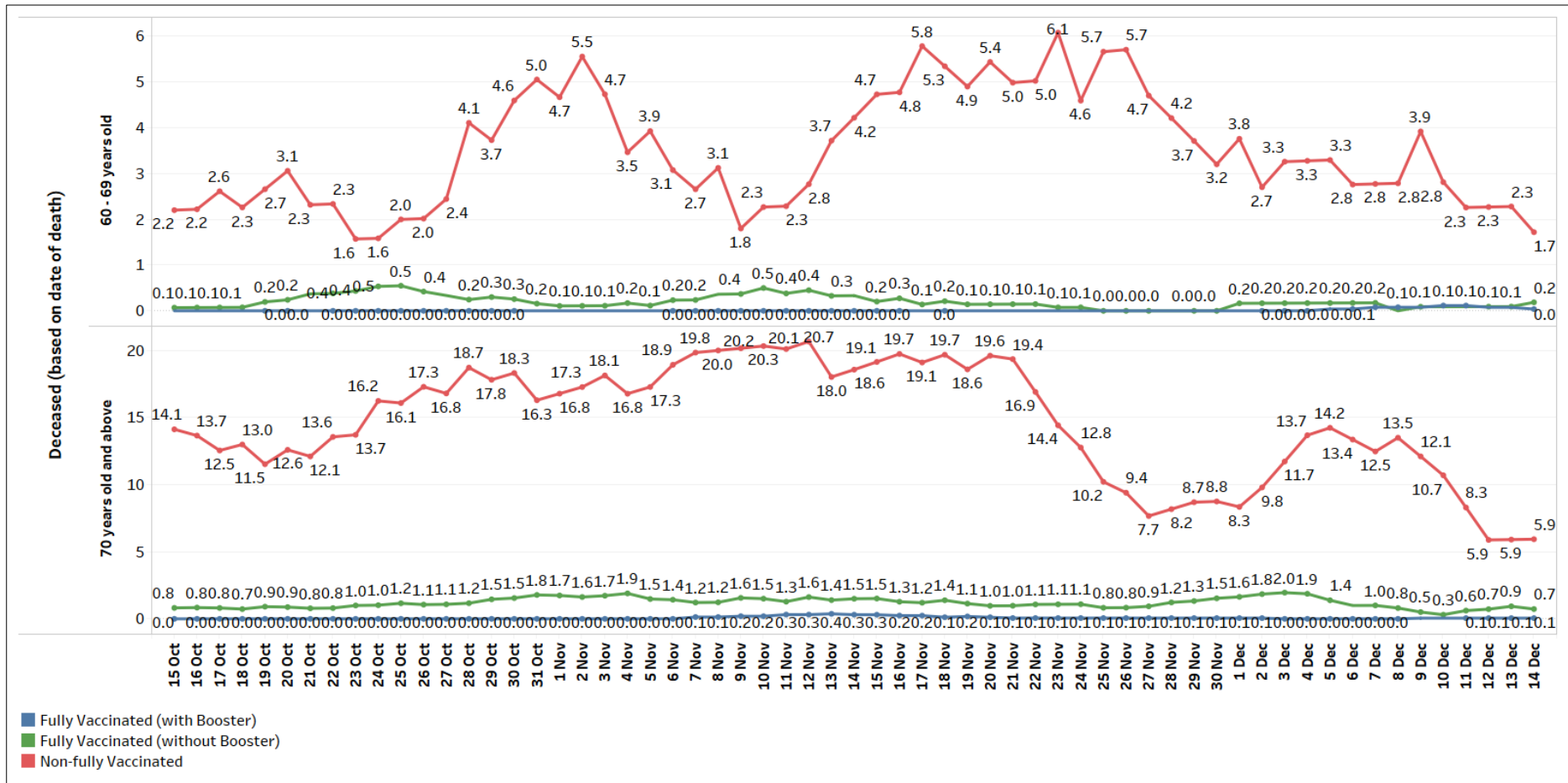
<sup>1</sup> Non-fully vaccinated status includes persons who are partially vaccinated and completely unvaccinated

**Figure 3:** 7-Day Moving Average of Number of Active Cases between 60 – 69, and 70 years old and Above that are Critically ill and Intubated in ICU, per 100,000 Population by Vaccination Status<sup>2</sup> (15 Oct – 14 Dec)



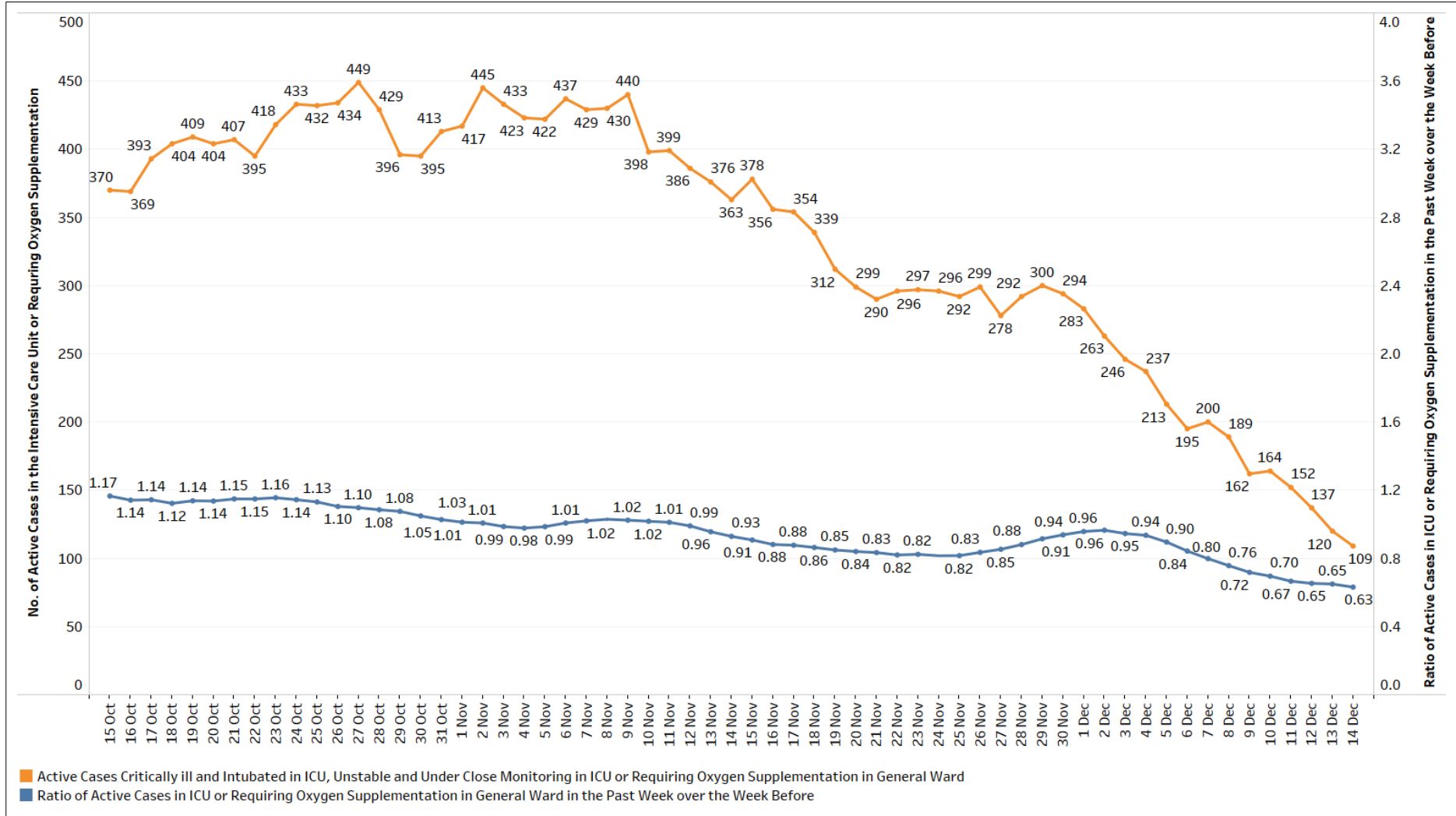
<sup>2</sup> The incidence charts have been updated based on the revised population numbers used to track the vaccination uptake to take into account changes in the population over the months. This resulted in an upward revision in the incidence rates amongst the non-fully vaccinated due to the downward revision in non-fully vaccinated numbers with the population update.

**Figure 4:** 7-Day Moving Average of Number of Deaths between 60 – 69, and 70 years old and Above, per 100,000 Population by Vaccination Status<sup>3</sup>  
(15 Oct – 14 Dec)

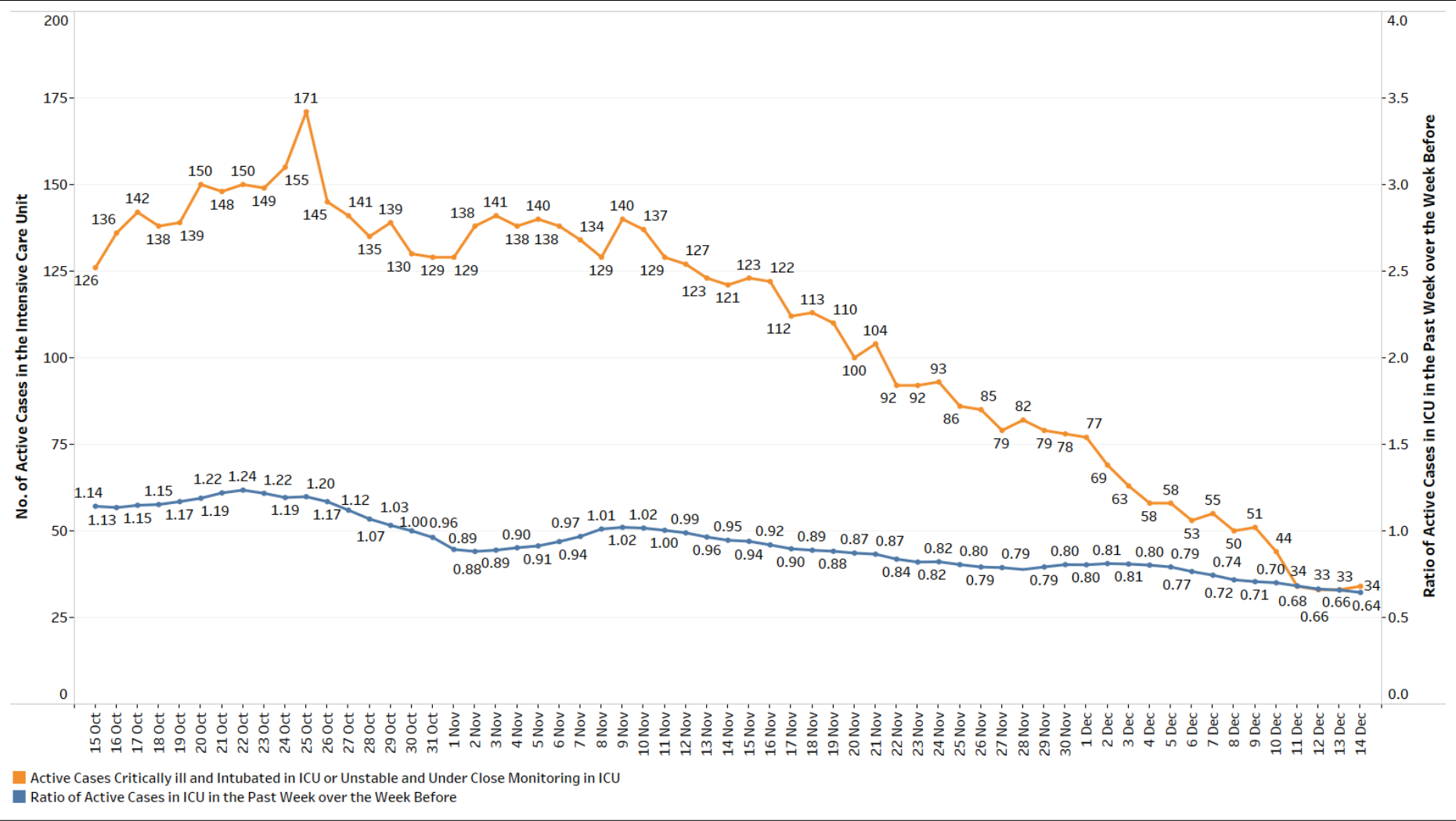


<sup>3</sup> The incidence charts have been updated based on the revised population numbers used to track the vaccination uptake to take into account changes in the population over the months. This resulted in an upward revision in the incidence rates amongst the non-fully vaccinated due to the downward revision in non-fully vaccinated numbers with the population update.

**Figure 5:** General Wards O2 + ICU (Intubated + Close Monitoring), Number of Cases and Week-on-Week Ratio of Cases (15 Oct – 14 Dec)



**Figure 6:** ICU (Intubated + Close Monitoring), Number of Cases and Week-on-Week Ratio of Cases (15 Oct – 14 Dec)



**Figure 7:** Deaths, Admissions into ICU and Discharges from ICU Among Local Cases by Notification Date

