

**19 February 2021 Daily Report on COVID-19****(1) Number of COVID-19 Cases****Figure 1.1:** Breakdown of New Confirmed Cases in the Past 14 Days

Press Release Date	Imported			Non-Imported Cases													All Cases		
				Community Cases								Dorm Residents <sup>1</sup>							
	Isolated before Detection	Detected through Surveillance <sup>2</sup>	Sub-Total	Isolated before Detection <sup>3</sup>				Detected through Surveillance <sup>4</sup>				Sub-Total	Incidence Rate <sup>5</sup> (per 100,000)	Isolated before Detection <sup>3</sup>	Detected through Surveillance <sup>4</sup>	No. of Cases		Incidence Rate <sup>5</sup> (per 100,000)	
				SC/PR	G or F	Visitor	Sub-Total	SC/PR	G or F	Visitor	Sub-Total								
Before 6-Feb	2,525	302	2,827	380	270	2	652	1,009	642	10	1,661	2,313	-	54,509		54,509	-	59,649	
6-Feb	24	2	26	0	0	0	0	0	0	0	0	0	0	0	0	0	0	0	26
7-Feb	23	0	23	0	0	0	0	1	0	0	1	1	0.019	0	0	0	0	0	24
8-Feb	20	0	20	0	0	0	0	1	1	0	2	2	0.037	0	0	0	0	0	22
9-Feb	10	1	11	0	0	0	0	0	0	0	0	0	0	0	0	0	0	0	11
10-Feb	14	0	14	0	0	0	0	0	0	0	0	0	0	0	1	1	0.31	15	
11-Feb	9	0	9	1	0	0	1	2	0	0	2	3	0.056	0	0	0	0	12	
12-Feb	15	1	16	2	0	0	2	0	0	0	0	2	0.037	0	0	0	0	18	
13-Feb	9	0	9	0	0	0	0	0	0	0	0	0	0	0	0	0	0	9	
14-Feb	13	1	14	0	0	0	0	0	0	0	0	0	0	0	0	0	0	14	
15-Feb	9	0	9	0	0	0	0	0	0	0	0	0	0	0	0	0	0	9	
16-Feb	1	0	1	0	0	0	0	0	0	0	0	0	0	0	0	0	0	1	
17-Feb	10	0	10	0	0	0	0	1	0	0	1	1	0.019	0	0	0	0	11	
18-Feb	11	0	11	0	0	0	0	0	0	0	0	0	0	0	0	0	0	11	
19-Feb	13	1	14	0	0	0	0	0	0	0	0	0	0	0	0	0	0	14	
Total since start of outbreak	2,706	308	3,014	383	270	2	655	1,014	643	10	1,667	2,322	-	54,510		54,510	-	59,846	
Population at risk												5,381,000				323,000		5,704,000	
Prevalence												0.04%				16.88%		1.05%	

**Notes**

<sup>1</sup> Includes PRs and visitors residing in dorms. Breakdown of dorm cases into those detected through surveillance and those isolated before detection is not available before 24 Aug.

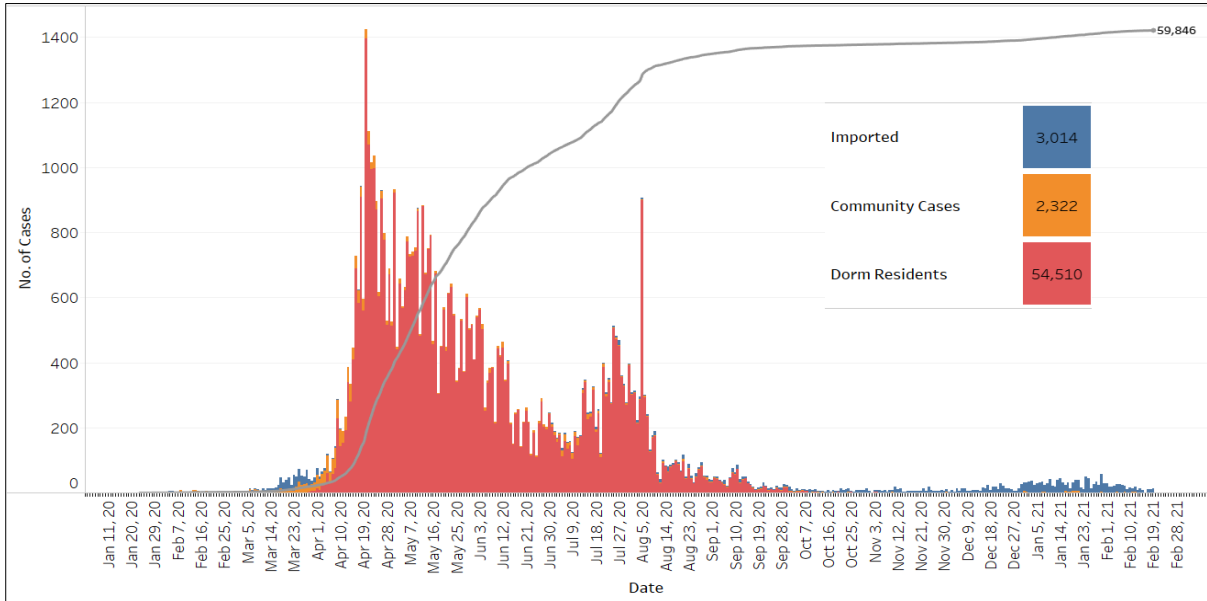
<sup>2</sup> 272 cases were reported before early Apr, and constitute the 1<sup>st</sup> wave of imported cases.

<sup>3</sup> Cases who were already quarantined and tested during quarantine to determine their status.

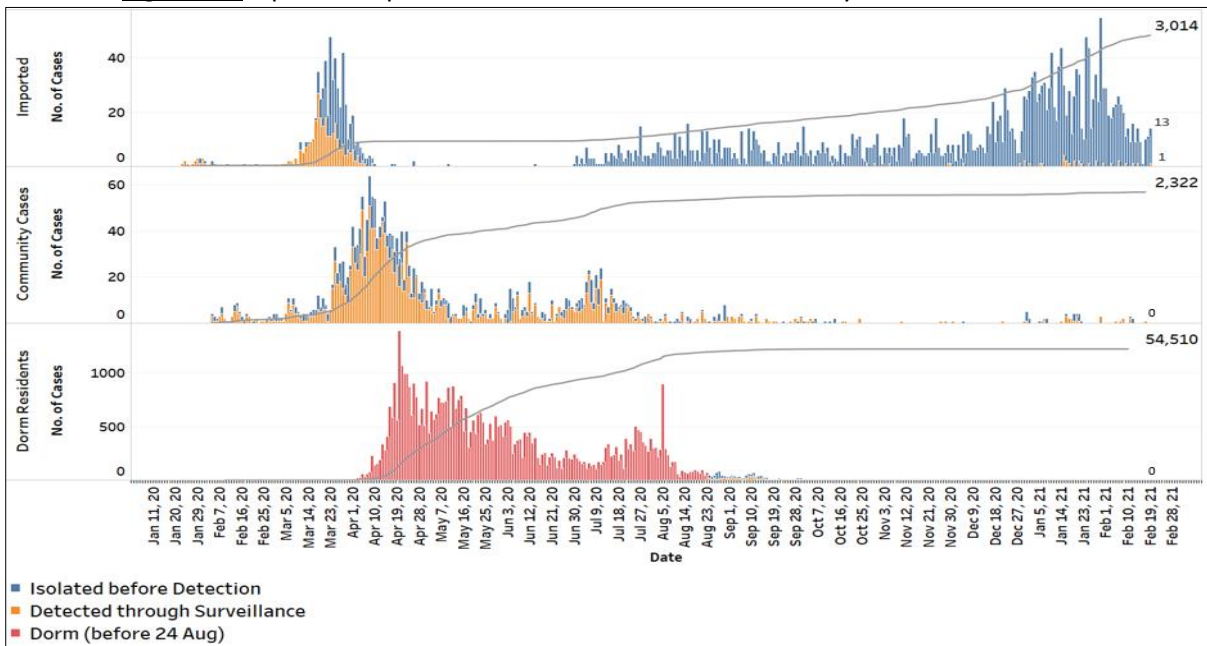
<sup>4</sup> Cases who were identified through surveillance testing, such as the bi-weekly Rostered Routine Testing (RRT) of at-risk workers and testing of those with Acute Respiratory Illness (ARI) symptoms.

<sup>5</sup> Incidence rates are rounded to two significant figures.

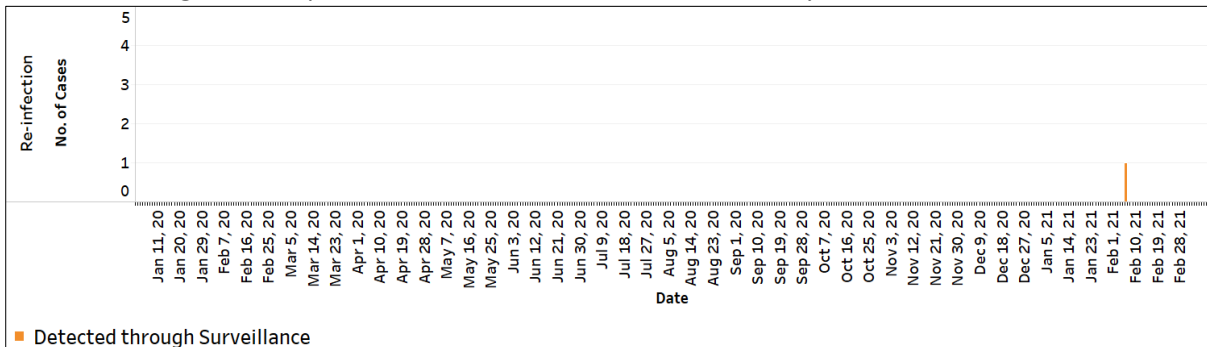
**Figure 1.2:** Epidemic Curve of the COVID-19 Outbreak by Press Release Date



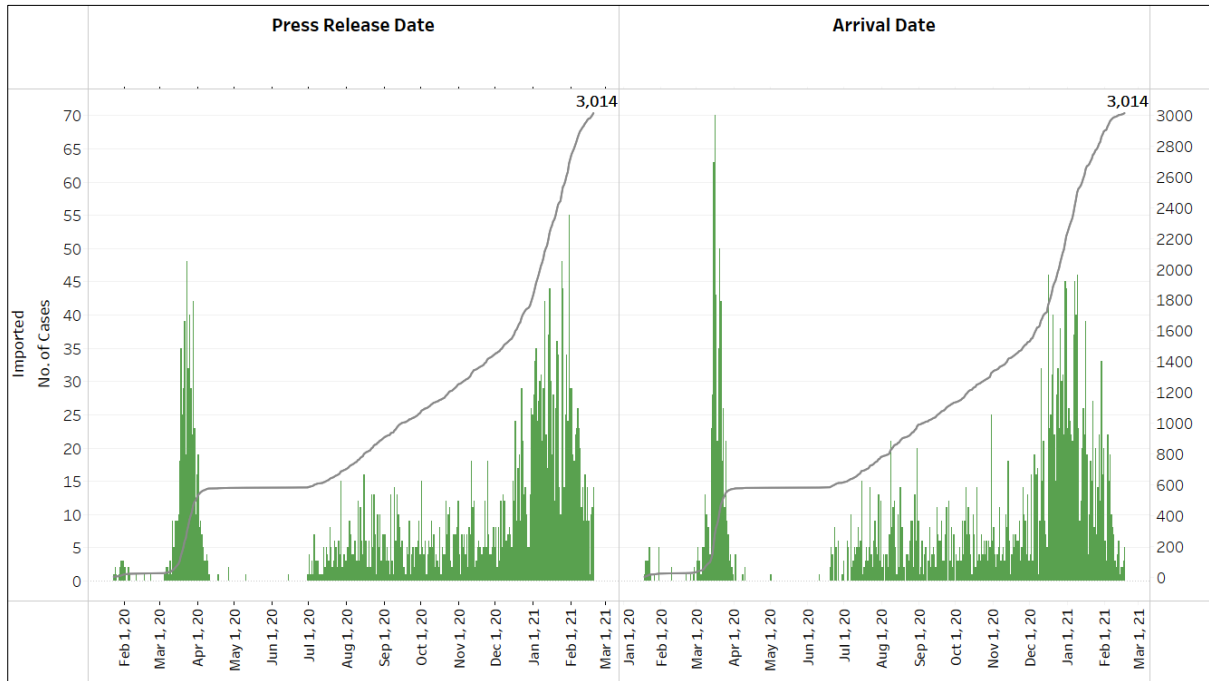
**Figure 1.3:** Epidemic Split Curve of the COVID-19 Outbreak by Press Release Date



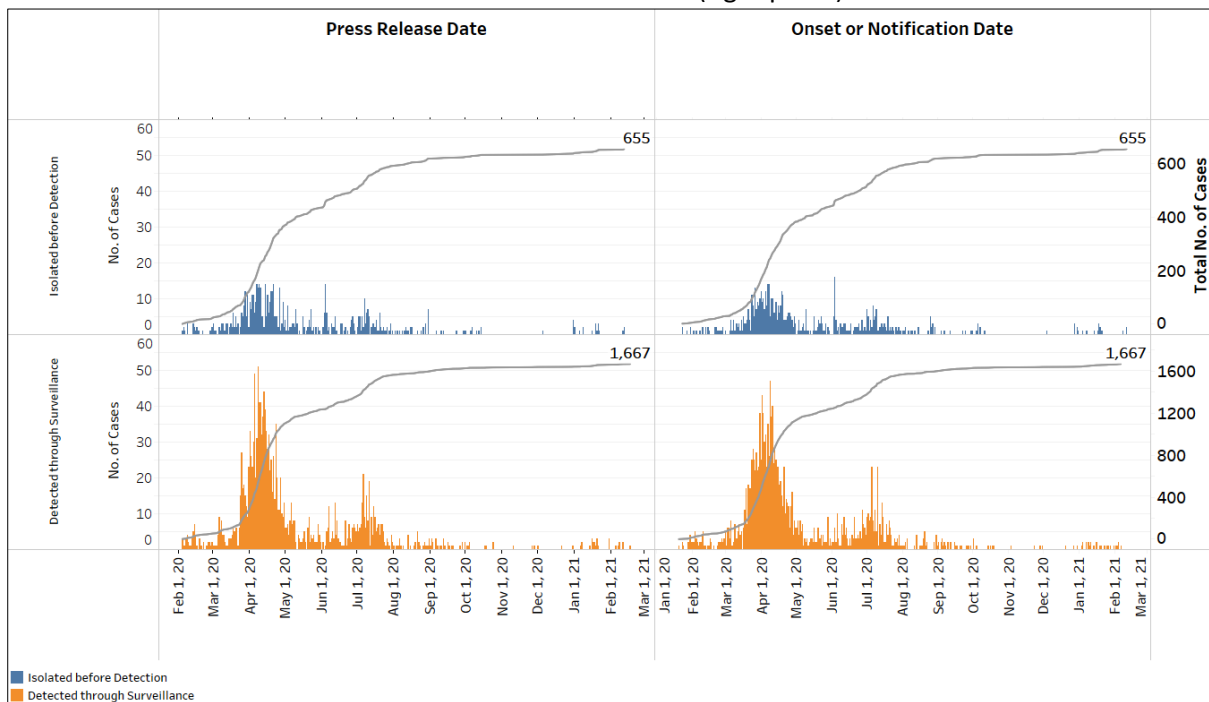
**Figure 1.4:** Epidemic Curve of COVID-19 Re-infection by Press Release Date



**Figure 1.5:** Epidemic Curve of Imported Cases by Press Release Date (left panel) and Arrival Date (right panel)

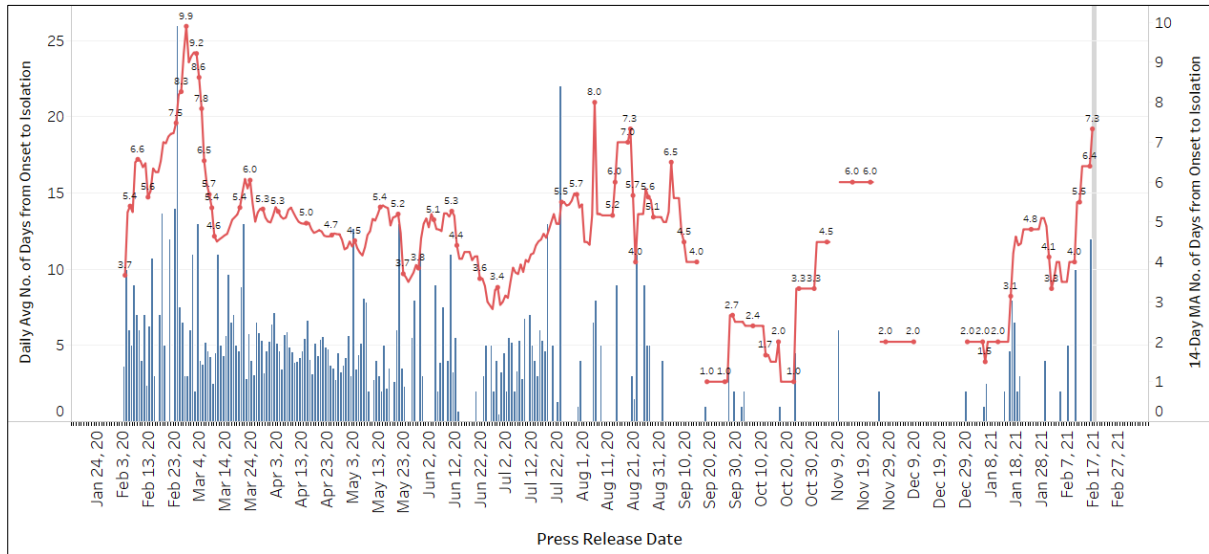


**Figure 1.6:** Epidemic Curve of Community Cases by Press Release Date (left panel) and by Symptom Onset or Notification Date<sup>6</sup> (right panel)



<sup>6</sup> Date of notification was used for cases that did not display any symptoms. The numbers with onset in the past few days may see an increase as more cases are notified.

**Figure 1.7:** Average Number of Days from Onset of Symptoms to Isolation (QO, hospital admission or notification to MOH) for Community Cases Detected through Surveillance in Each Day



Line represents the 14-day moving average; Bar represents the daily average<sup>7</sup>

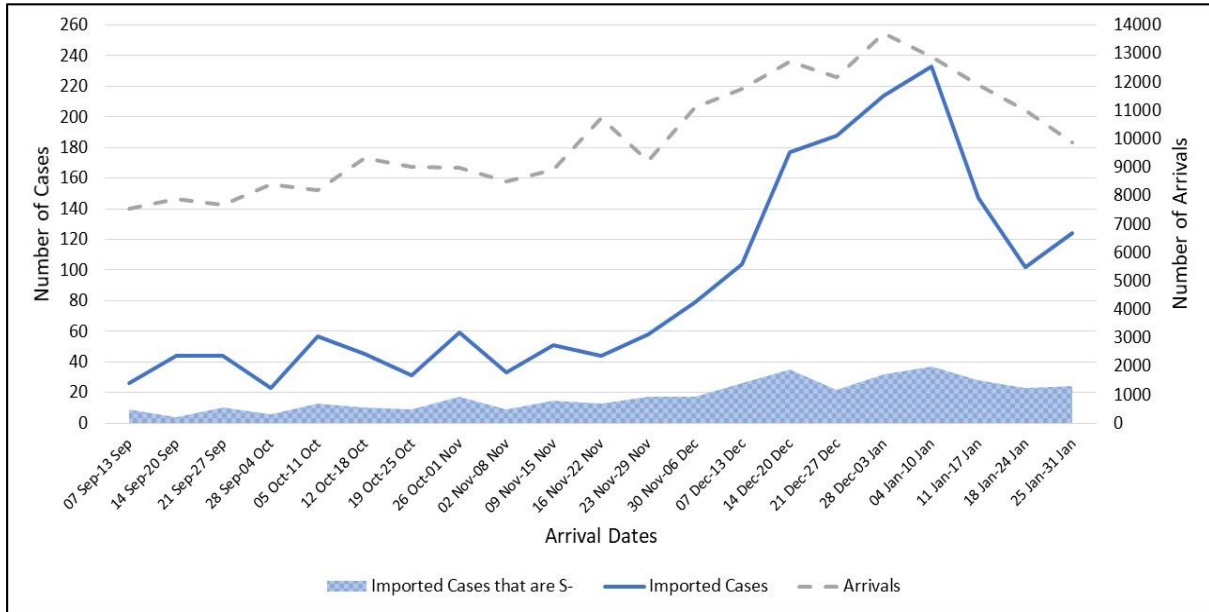
<sup>7</sup> Area in grey demarcates data points for the past 3 days where some cases may still be pending epidemiological investigation. The bar graph shows the daily average number of days from symptoms onset to isolation, while the line graph shows the moving average for the past 14 days. Both graphs exclude cases with no onset date (asymptomatic) in the computation of the average. Community cases with symptoms who are isolated on the same day that symptoms occurred would have an isolation time of 0. There is a gap in the line graph from 16 to 18 Sep as there are no symptomatic cases in the preceding 14 days.

**(2) Imported COVID-19 Cases**

**Figure 2.1:** Serology and Symptom Status of Imported Cases Reported from 6 Feb to 12 Feb

Symptoms	S+	S-	Not Serology Tested	Pending Serology Result	Total No. of Cases
Asymptomatic	79	23	0	5	<b>107</b>
Symptomatic	7	5	0	0	<b>12</b>
<b>Total</b>	<b>86</b>	<b>28</b>	<b>0</b>	<b>5</b>	<b>119</b>

**Figure 2.2:** Weekly Total Number of Imported Cases, Imported Cases that are S- and Arrivals from 7 Sep 20 to 31 Jan 21<sup>8</sup> (next update will be on 22 Feb)



<sup>8</sup> Data from the past 2 weeks are excluded as arrivals on SHN who arrived in the past 2 weeks may not have their SHN exit test results yet. "Imported Cases that are S-" comprises imported cases who are (a) serology negative; or (b) not tested for serology.

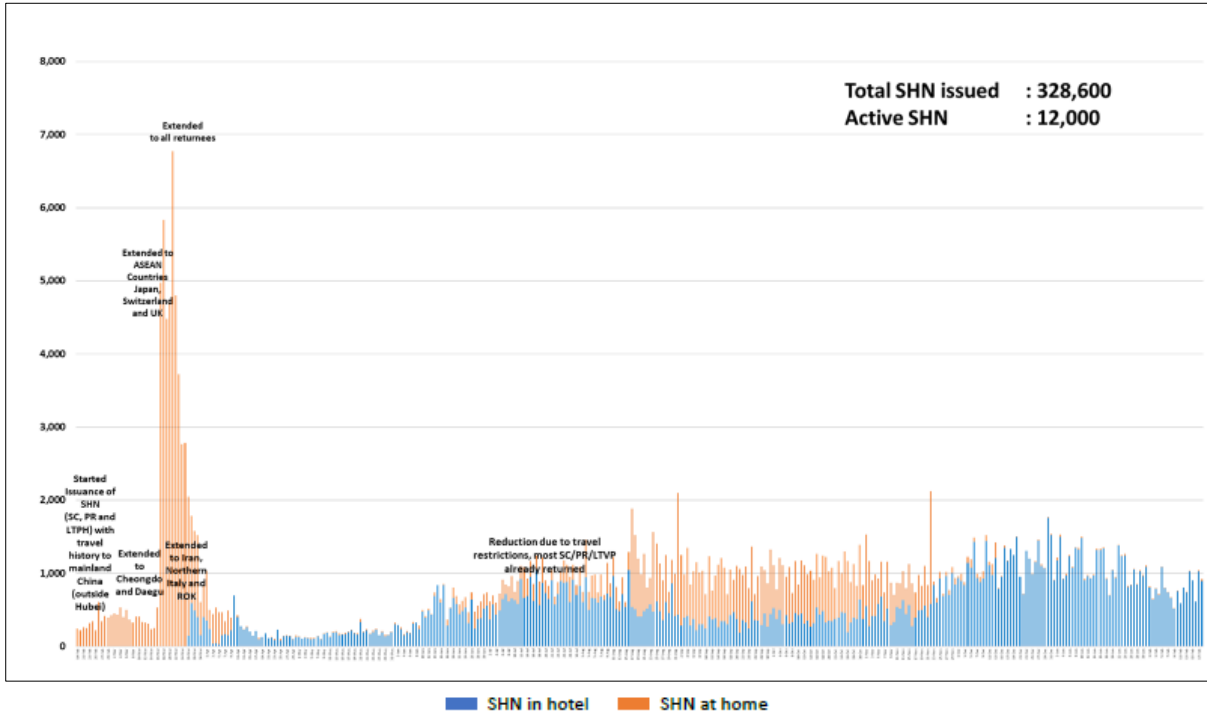
**(3) Number of COVID-19 Cases in Hospitals and Community Care Facilities****Figure 3.1:** Summary of Confirmed Cases by Status in the Past 14 Days

Press Release Date	Currently Admitted in Hospitals		In Care Facilities <sup>9</sup>	Total Recovered		Total Demised	Total
	ICU	General Wards		Completed Isolation	Discharged from Hospital		
6-Feb	1	38	202	56,342	3,063	29	<b>59,675</b>
7-Feb	1	35	201	56,369	3,064	29	<b>59,699</b>
8-Feb	1	43	164	56,416	3,068	29	<b>59,721</b>
9-Feb	1	39	157	56,434	3,072	29	<b>59,732</b>
10-Feb	1	35	156	56,449	3,077	29	<b>59,747</b>
11-Feb	1	32	139	56,475	3,083	29	<b>59,759</b>
12-Feb	1	30	148	56,486	3,083	29	<b>59,777</b>
13-Feb	1	33	119	56,517	3,087	29	<b>59,786</b>
14-Feb	1	31	118	56,532	3,089	29	<b>59,800</b>
15-Feb	1	35	103	56,551	3,090	29	<b>59,809</b>
16-Feb	1	29	90	56,567	3,094	29	<b>59,810</b>
17-Feb	1	24	91	56,580	3,096	29	<b>59,821</b>
18-Feb	1	19	104	56,580	3,099	29	<b>59,832</b>
19-Feb	1	19	100	56,595	3,102	29	<b>59,846</b>

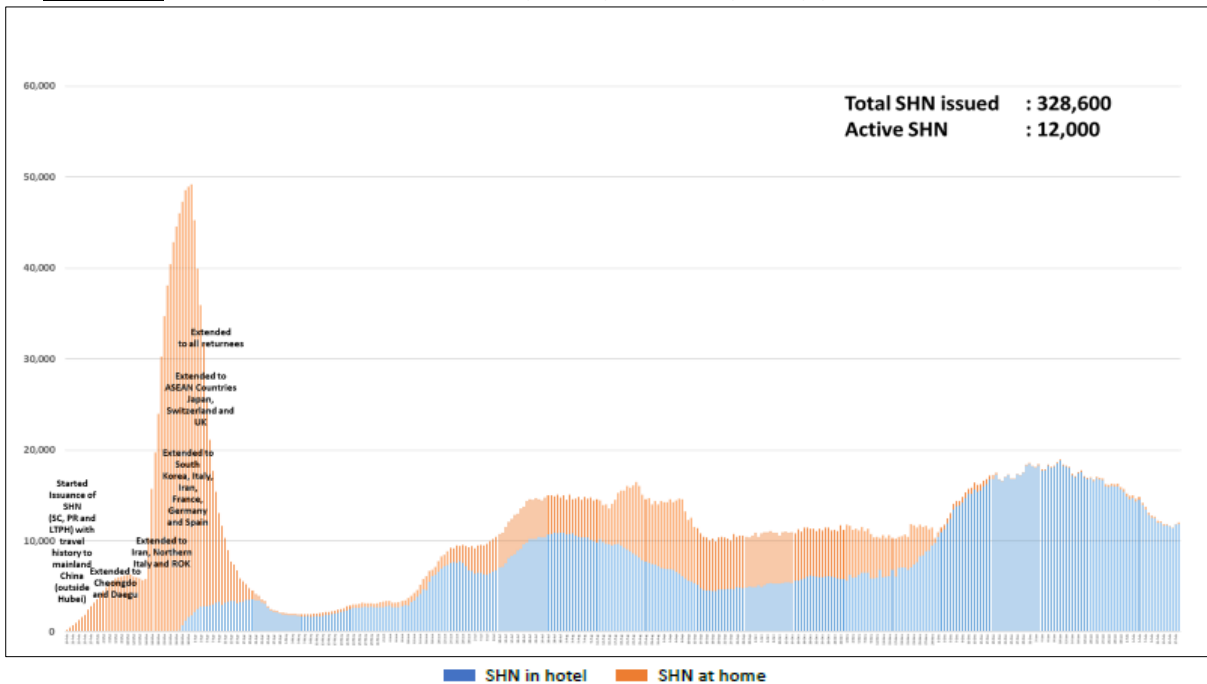
<sup>9</sup> Community Care Facilities (i.e. D'Resort, EXPO, Tuas South), Private Hospitals (i.e. Concord International Hospital, Mt Elizabeth Hospital, Gleneagles Hospital, Mt Elizabeth Novena Hospital, Parkway East Hospital), Community Hospitals (i.e. Bright Vision Hospital) and other care facilities.

**(4) Number of Stay-Home-Notice (SHN) Issued**

**Figure 4.1:** Daily Number of SHN issued (19 Feb 2020 to 18 Feb 2021)

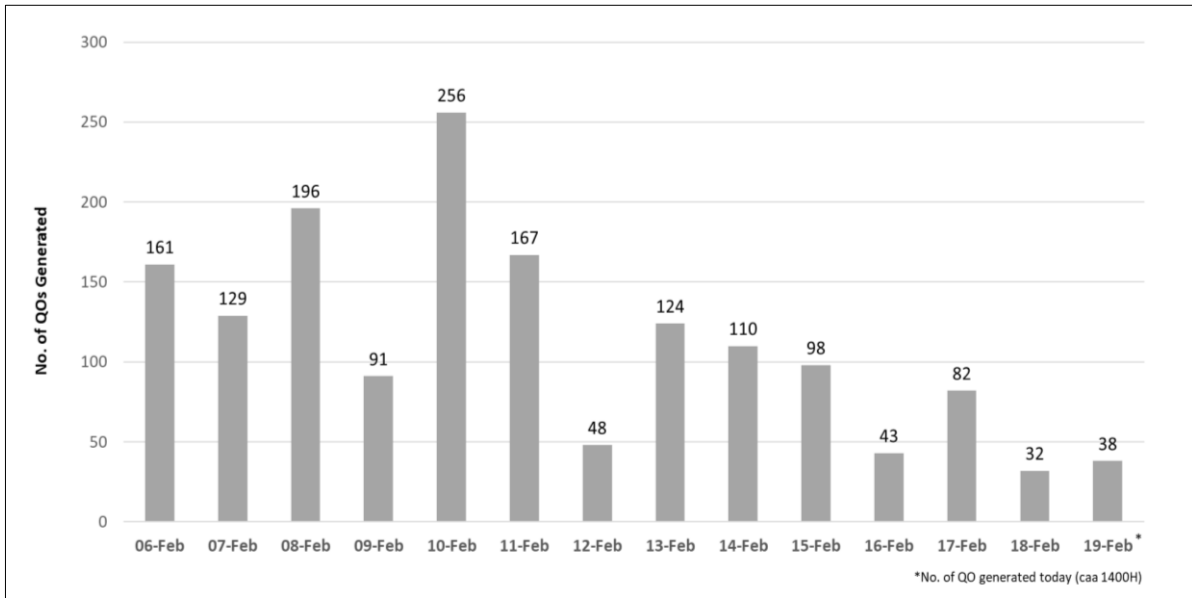


**Figure 4.2:** Active Stock Number of SHN (Home) and SHN (Hotel) (19 Feb 2020 to 18 Feb 2021)



**(5) Number of Quarantine Orders (QO) Issued**

**Figure 5.1:** Daily Number of QOs Issued



**Figure 5.2:** Active Number of Persons Under Quarantine (PUQs)

