

12 April 2021 Daily Report on COVID-19

(1) Number of COVID-19 Cases

Figure 1.1: Breakdown of New Confirmed Cases in the Past 14 Days

Press Release Date	Imported			Non-Imported Cases														All Cases	
	Isolated before Detection	Detected through Surveillance ²	Sub-Total	Community Cases								Dorm Residents ¹							
				Isolated before Detection ³				Detected through Surveillance ⁴				Sub-Total	Incidence Rate ⁵ (per 100,000)	Isolated before Detection ³	Detected through Surveillance ⁴	No. of Cases	Incidence Rate ⁵ (per 100,000)		
				SC/PR	G or F	Visitor	Sub-Total	SC/PR	G or F	Visitor	Sub-Total								
Before 30-Mar	3,166	315	3,481	385	271	2	658	1,017	644	10	1,671	2,329	-	54,511		54,511	-	60,321	
30-Mar	26	0	26	0	0	0	0	0	0	0	0	0	0	0	0	0	0	0	26
31-Mar	33	0	33	0	0	0	0	1	0	0	1	1	0.019	0	0	0	0	0	34
1-Apr	26	0	26	0	0	0	0	0	0	0	0	0	0	0	0	0	0	0	26
2-Apr	42	1	43	0	0	0	0	0	0	0	0	0	0	0	0	0	0	0	43
3-Apr	17	0	17	0	0	0	0	0	1	0	1	1	0.019	0	0	0	0	0	18
4-Apr	10	0	10	0	0	0	0	0	0	0	0	0	0	0	0	0	0	0	10
5-Apr	17	0	17	0	0	0	0	0	0	0	0	0	0	0	0	0	0	0	17
6-Apr	24	0	24	0	0	0	0	0	0	0	0	0	0	0	0	0	0	0	24
7-Apr	34	0	34	0	0	0	0	0	1	0	1	1	0.019	0	0	0	0	0	35
8-Apr	21	0	21	0	0	0	0	0	0	0	0	0	0	0	0	0	0	0	21
9-Apr	26	0	26	0	0	0	0	0	0	0	0	0	0	0	0	0	0	0	26
10-Apr	31	0	31	0	0	0	0	0	0	1	1	1	0.019	0	0	0	0	0	32
11-Apr	19	0	19	0	0	0	0	0	0	0	0	0	0	0	1	1	0.31	20	
12-Apr	25	0	25	0	0	0	0	0	0	0	0	0	0	0	0	0	0	0	25
Total since start of outbreak	3,517	316	3,833	385	271	2	658	1,018	646	11	1,675	2,333	-	54,512		54,512	-	60,678	
Population at risk												5,381,000				323,000		5,704,000	
Prevalence												0.04%				16.88%		1.06%	

Notes

¹ Includes PRs and visitors residing in dorms. Breakdown of dorm cases into those detected through surveillance and those isolated before detection is not available before 24 Aug.

² 272 cases were reported before early Apr, and constitute the 1st wave of imported cases.

³ Cases who were already quarantined and tested during quarantine to determine their status.

⁴ Cases who were identified through surveillance testing, such as the bi-weekly Rostered Routine Testing (RRT) of at-risk workers and testing of those with Acute Respiratory Illness (ARI) symptoms.

⁵ Incidence rates are rounded to two significant figures.

Figure 1.2: Epidemic Curve of the COVID-19 Outbreak by Press Release Date

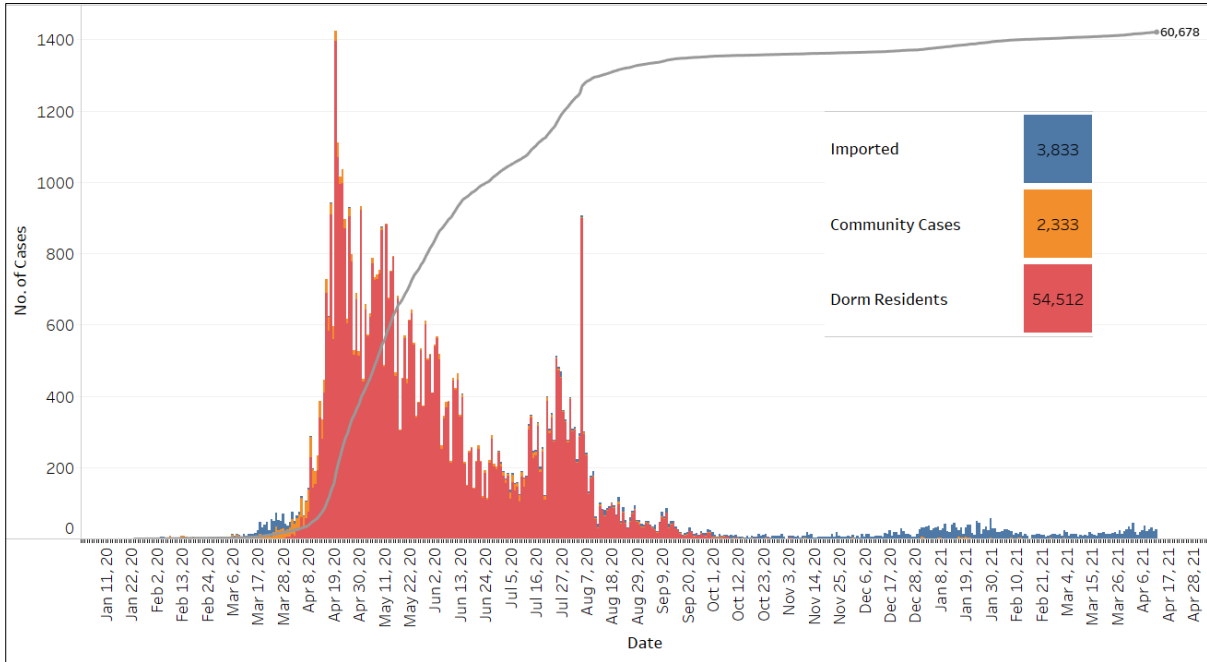


Figure 1.3: Epidemic Split Curve of the COVID-19 Outbreak by Press Release Date

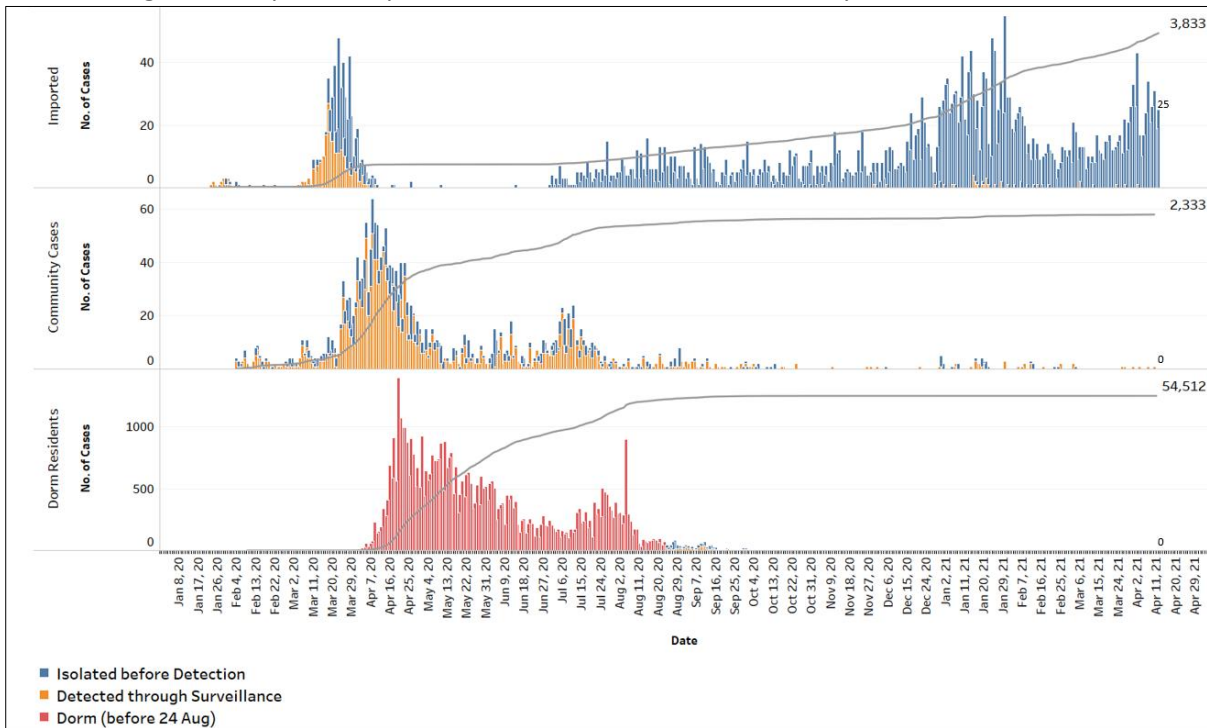


Figure 1.4: Epidemic Curve of COVID-19 Re-infections by Press Release Date

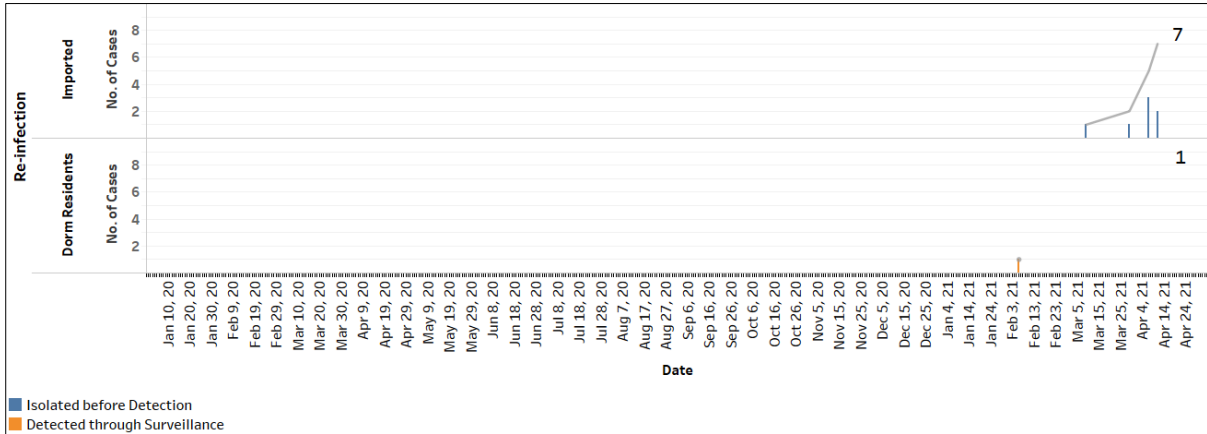


Figure 1.5: Epidemic Curve of Imported Cases by Press Release Date (left panel) and Arrival Date (right panel)

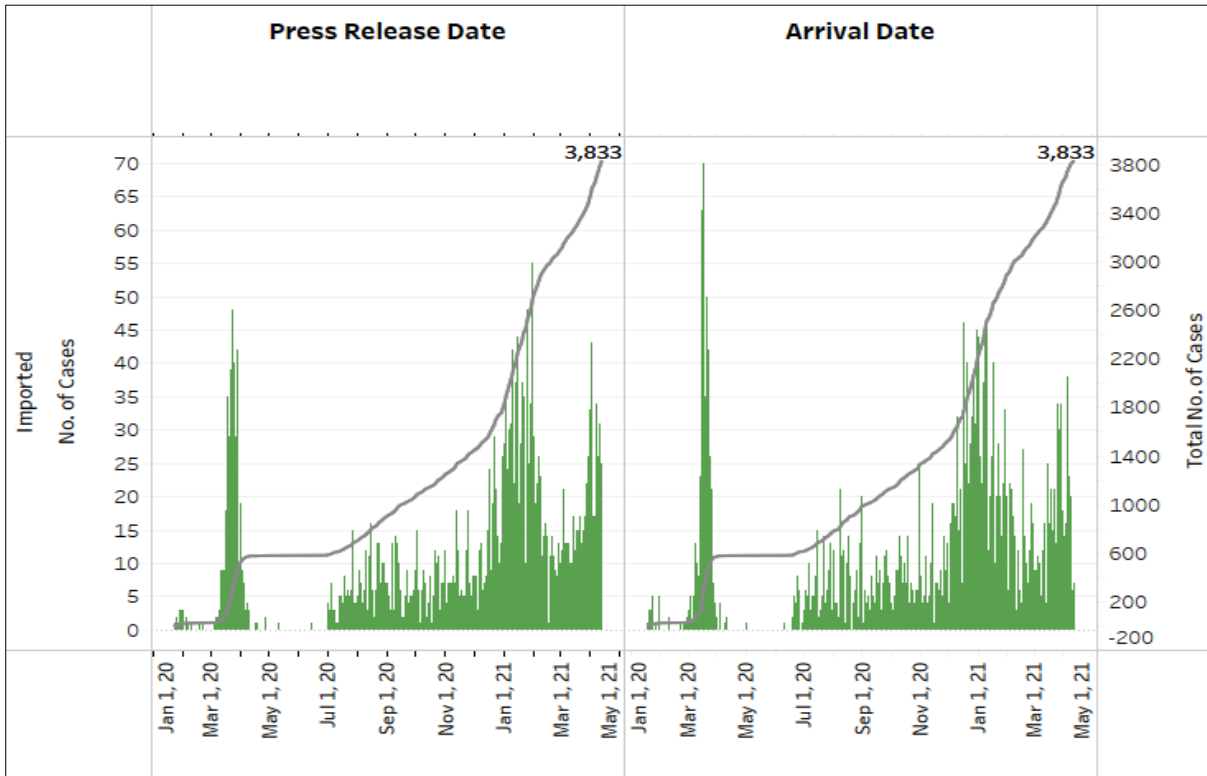


Figure 1.6: Epidemic Curve of Community Cases by Press Release Date (left panel) and by Symptom Onset or Notification Date⁶ (right panel)

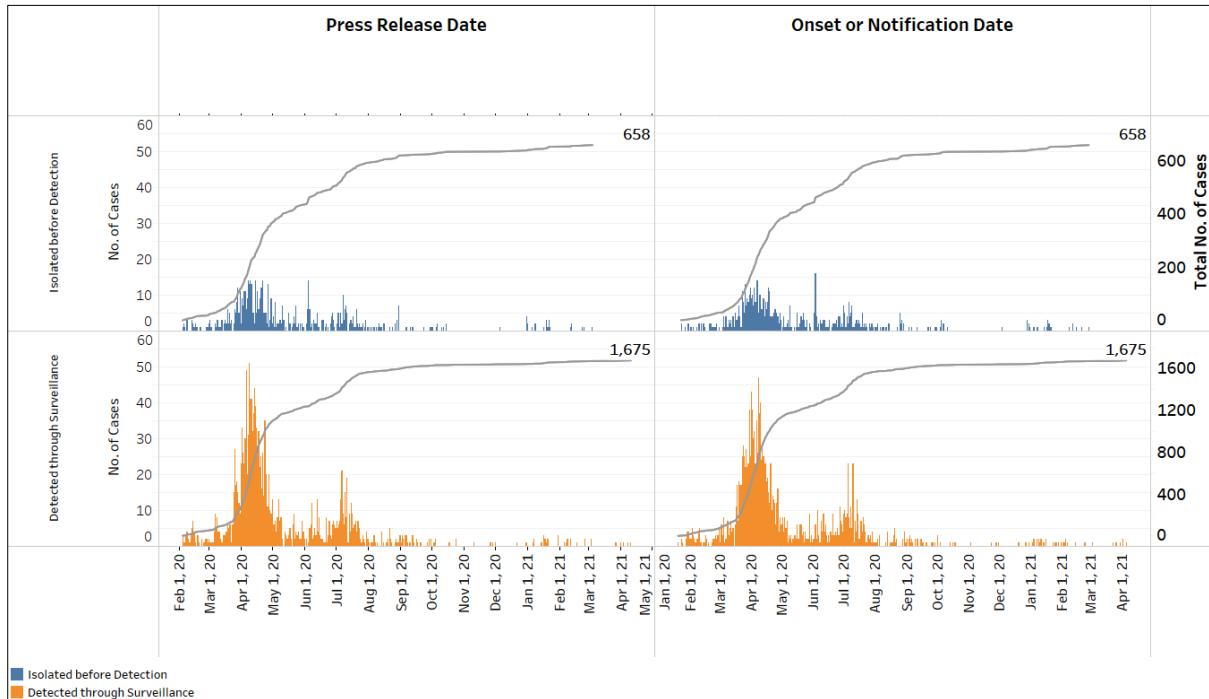
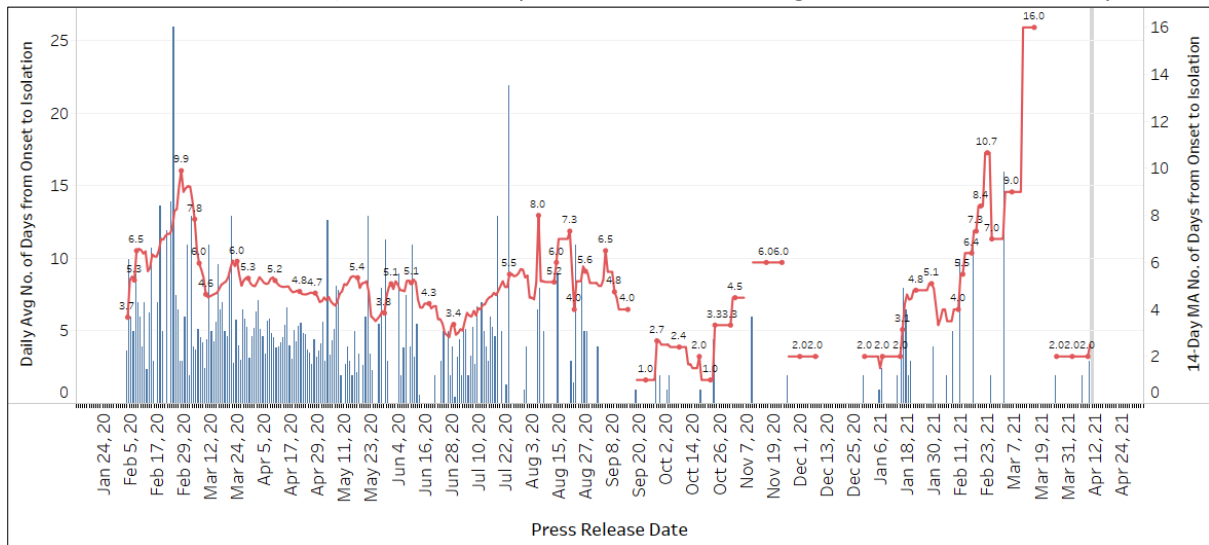


Figure 1.7: Average Number of Days from Onset of Symptoms to Isolation (QO, hospital admission or notification to MOH) for Community Cases Detected through Surveillance in Each Day



Line represents the 14-day moving average; Bar represents the daily average⁷

⁶ Date of notification was used for cases that did not display any symptoms. The numbers with onset in the past few days may see an increase as more cases are notified.

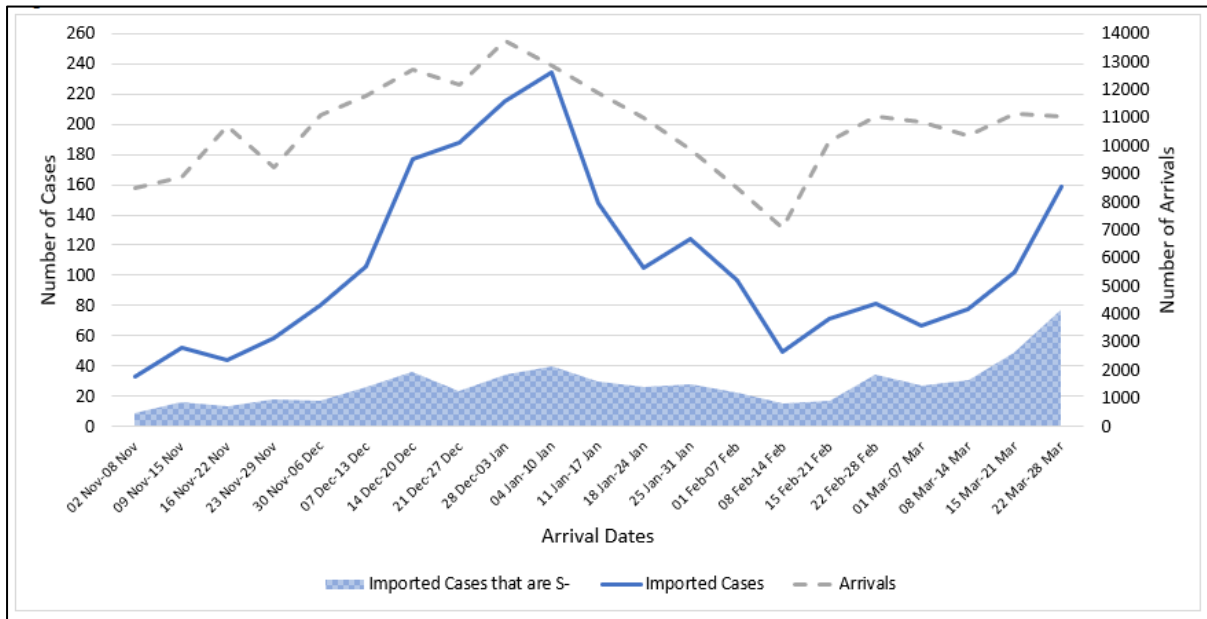
⁷ Area in grey demarcates data points for the past 3 days where some cases may still be pending epidemiological investigation. The bar graph shows the daily average number of days from symptoms onset to isolation, while the line graph shows the moving average for the past 14 days. Both graphs exclude cases with no onset date (asymptomatic) in the computation of the average. Community cases with symptoms who are isolated on the same day that symptoms occurred would have an isolation time of 0. There is a gap in the line graph from 16 to 18 Sep as there are no symptomatic cases in the preceding 14 days.

(2) Imported COVID-19 Cases

Figure 2.1: Serology and Symptom Status of Imported Cases Reported from 30 Mar to 05 Apr

Symptoms	S+	S-	Not Serology Tested	Pending Serology Result	Total No. of Cases
Asymptomatic	80	76	0	5	161
Symptomatic	1	10	0	0	11
Total	81	86	0	5	172

Figure 2.2: Weekly Total Number of Imported Cases, Imported Cases that are S- and Arrivals from 02 Nov 20 to 28 Mar 21



(3) Number of COVID-19 Cases in Hospitals and Community Care Facilities**Figure 3.1:** Summary of Confirmed Cases by Status in the Past 14 Days

Press Release Date	Currently Admitted in Hospitals		In Care Facilities ⁸	Total Recovered		Total Demised	Total
	ICU	General Wards		Completed Isolation	Discharged from Hospital		
30-Mar	1	36	142	56,950	3,188	30	60,347
31-Mar	1	36	165	56,957	3,192	30	60,381
1-Apr	1	37	178	56,967	3,194	30	60,407
2-Apr	1	39	204	56,980	3,196	30	60,450
3-Apr	1	40	212	56,989	3,196	30	60,468
4-Apr	1	39	206	57,004	3,198	30	60,478
5-Apr	1	45	205	57,014	3,200	30	60,495
6-Apr	1	47	202	57,037	3,202	30	60,519
7-Apr	1	45	218	57,054	3,206	30	60,554
8-Apr	1	42	218	57,074	3,210	30	60,575
9-Apr	1	43	223	57,090	3,214	30	60,601
10-Apr	1	44	236	57,106	3,216	30	60,633
11-Apr	1	57	230	57,118	3,217	30	60,653
12-Apr	1	55	235	57,135	3,222	30	60,678

⁸ Community Care Facilities (i.e. D'Resort, EXPO, Tuas South), Private Hospitals (i.e. Concord International Hospital, Mt Elizabeth Hospital, Gleneagles Hospital, Mt Elizabeth Novena Hospital, Parkway East Hospital), Community Hospitals (i.e. Bright Vision Hospital) and other care facilities.

(4) Number of Stay-Home-Notice (SHN) Issued

Figure 4.1: Daily Number of SHN issued (19 Feb 2020 to 11 Apr 2021)

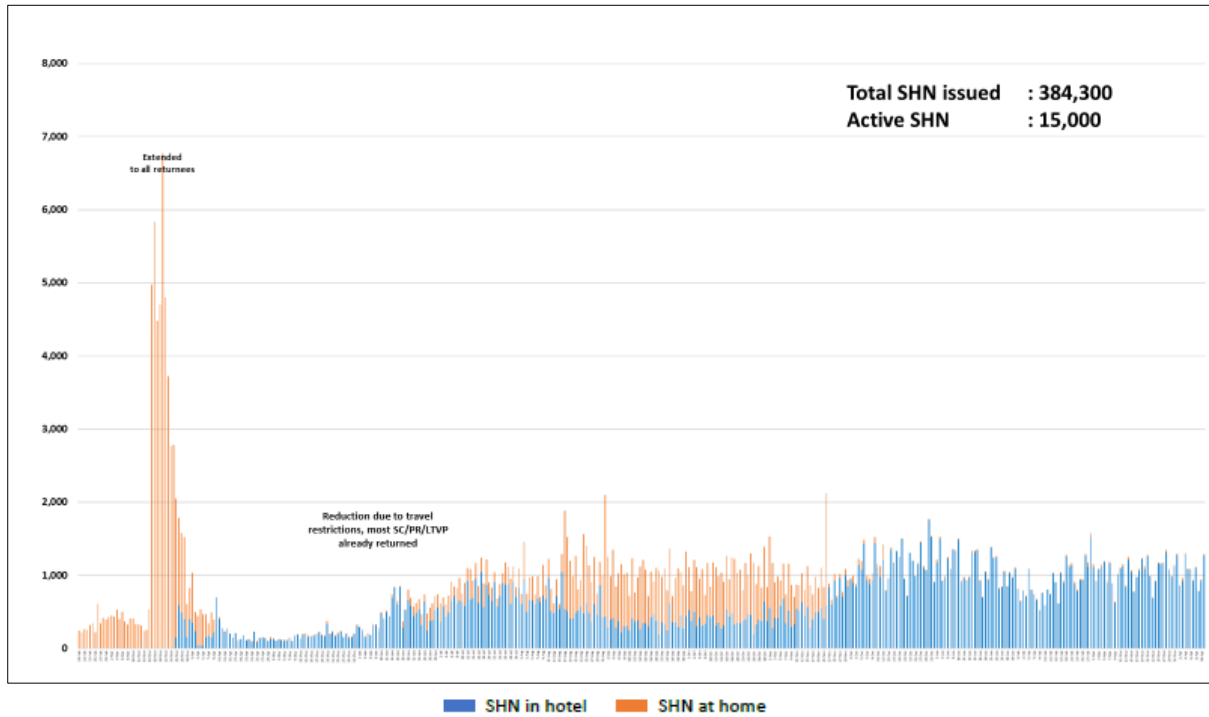
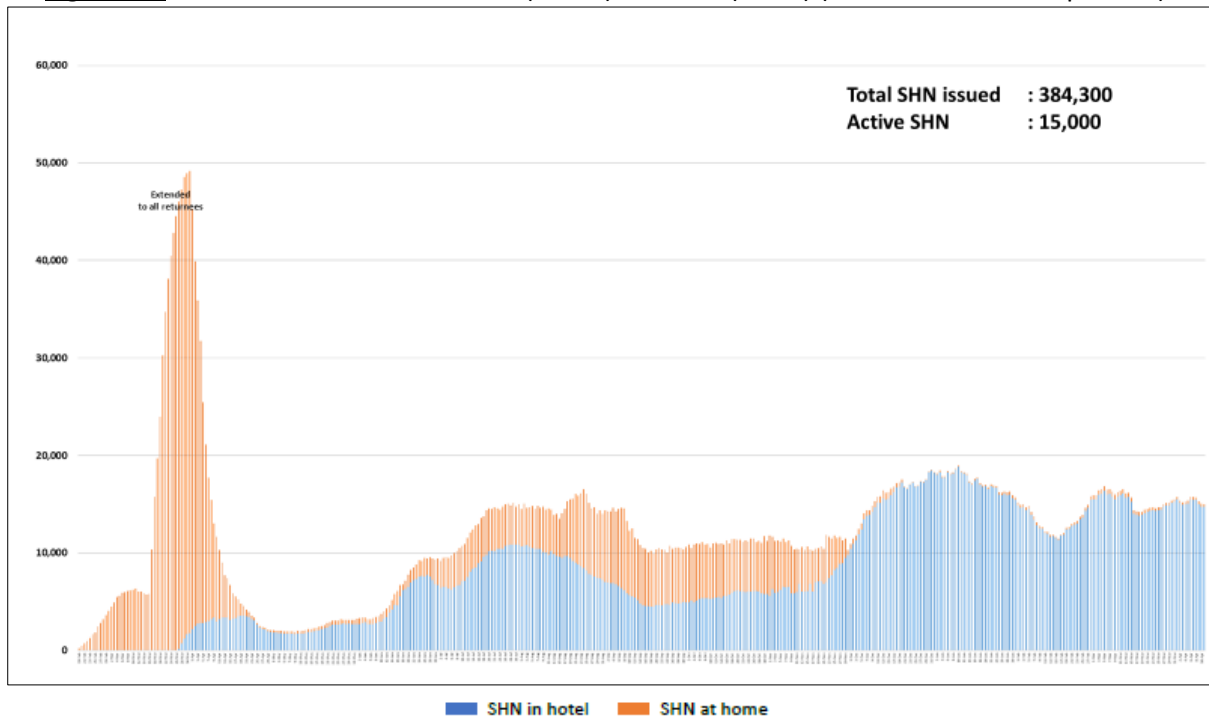


Figure 4.2: Active Stock Number of SHN (Home) and SHN (Hotel) (19 Feb 2020 to 11 Apr 2021)



(5) Number of Quarantine Orders (QO) Generated

Figure 5.1: Daily Number of QOs Generated

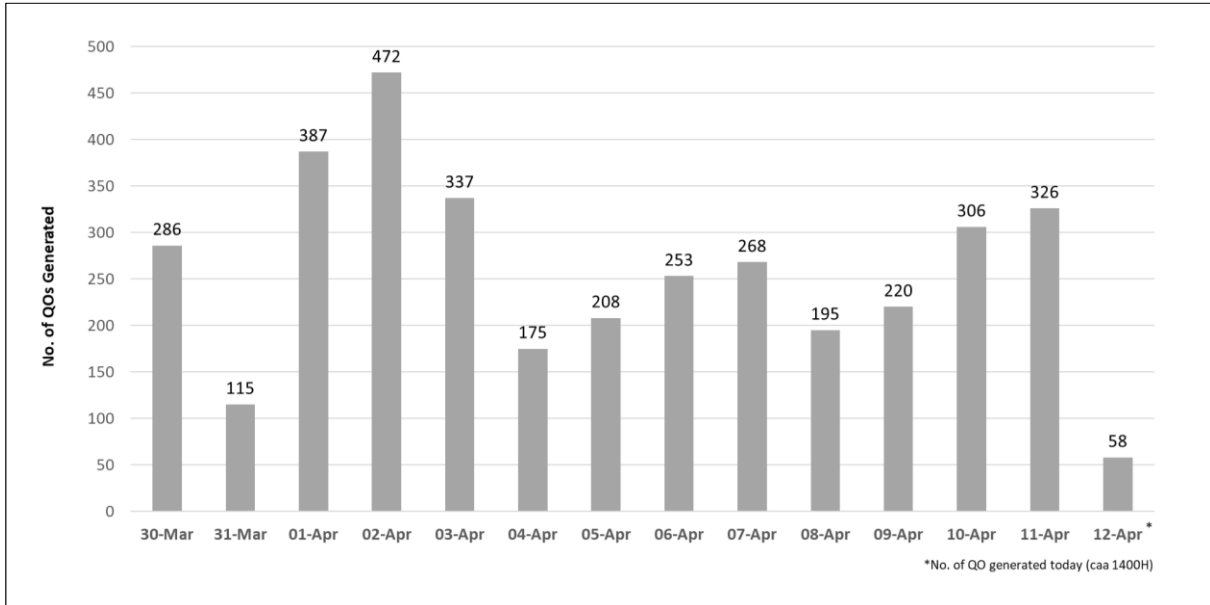


Figure 5.2: Active Number of Persons Under Quarantine (PUQs)

