

20 April 2021 Daily Report on COVID-19**(1) Number of COVID-19 Cases****Figure 1.1:** Breakdown of New Confirmed Cases in the Past 14 Days

Press Release Date	Imported			Non-Imported Cases														All Cases
				Community Cases								Dorm Residents ¹						
	Isolated before Detection	Detected through Surveillance ²	Sub-Total	Isolated before Detection ³				Detected through Surveillance ⁴				Sub-Total	Incidence Rate ⁵ (per 100,000)	Isolated before Detection ³	Detected through Surveillance ⁴	No. of Cases	Incidence Rate ⁵ (per 100,000)	
				SC/PR	G or F	Visitor	Sub-Total	SC/PR	G or F	Visitor	Sub-Total							
Before 7-Apr	3,361	317	3,678	385	271	2	658	1,017	645	10	1,672	2,330	-	54,511		54,511	-	60,519
7-Apr	34	0	34	0	0	0	0	0	1	0	1	1	0.019	0	0	0	0	35
8-Apr	21	0	21	0	0	0	0	0	0	0	0	0	0	0	0	0	0	21
9-Apr	26	0	26	0	0	0	0	0	0	0	0	0	0	0	0	0	0	26
10-Apr	31	0	31	0	0	0	0	0	0	1	1	1	0.019	0	0	0	0	32
11-Apr	19	0	19	0	0	0	0	0	0	0	0	0	0	0	1	1	0.31	20
12-Apr	25	0	25	0	0	0	0	0	0	0	0	0	0	0	0	0	0	25
13-Apr	14	0	14	0	0	0	0	0	0	0	0	0	0	0	0	0	0	14
14-Apr	26	0	26	0	0	1	1	0	0	0	0	1	0.019	0	0	0	0	27
15-Apr	16	0	16	0	0	0	0	0	0	0	0	0	0	0	0	0	0	16
16-Apr	32	0	32	0	0	0	0	0	1	1	2	2	0.037	0	0	0	0	34
17-Apr	35	0	35	0	2	0	2	2	0	0	2	4	0.074	0	0	0	0	39
18-Apr	21	1	22	0	0	0	0	0	1	0	1	1	0.019	0	0	0	0	23
19-Apr	19	0	19	1	0	0	1	0	0	0	0	1	0.019	0	0	0	0	20
20-Apr	13	0	13	0	0	0	0	0	0	0	0	0	0	0	1	1	0.31	14
Total since start of outbreak	3,693	318	4,011	386	273	3	662	1,019	648	12	1,679	2,341	-	54,513		54,513	-	60,865
Population at risk												5,381,000				323,000		5,704,000
Prevalence												0.04%				16.88%		1.07%

Notes

¹ Includes PRs and visitors residing in dorms. Breakdown of dorm cases into those detected through surveillance and those isolated before detection is not available before 24 Aug.

² 272 cases were reported before early Apr, and constitute the 1st wave of imported cases.

³ Cases who were already quarantined and tested during quarantine to determine their status.

⁴ Cases who were identified through surveillance testing, such as the bi-weekly Rostered Routine Testing (RRT) of at-risk workers and testing of those with Acute Respiratory Illness (ARI) symptoms.

⁵ Incidence rates are rounded to two significant figures.

Figure 1.2: Epidemic Curve of the COVID-19 Outbreak by Press Release Date

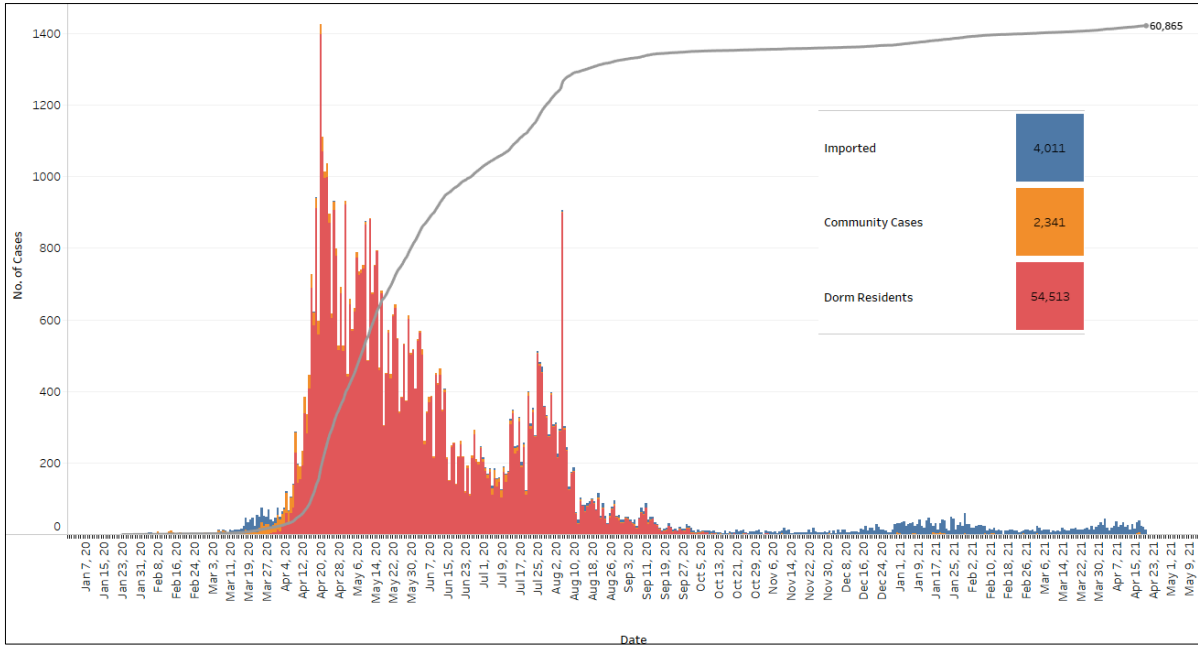


Figure 1.3: Epidemic Split Curve of the COVID-19 Outbreak by Press Release Date

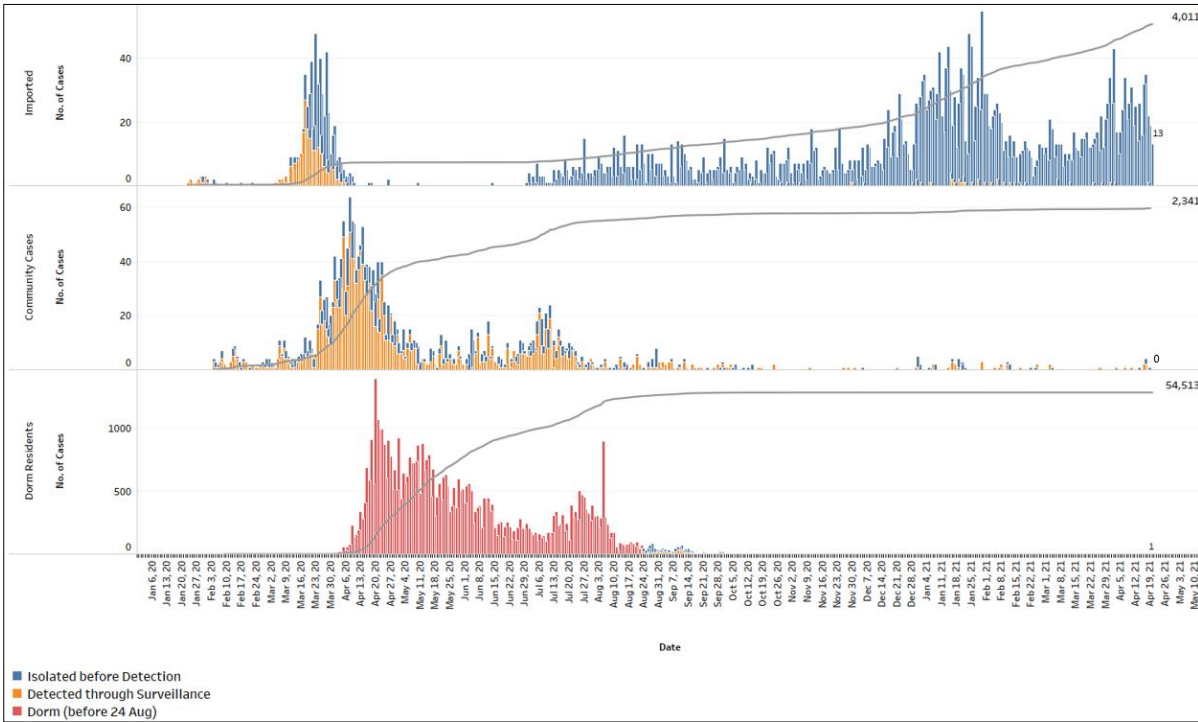


Figure 1.4: Epidemic Curve of COVID-19 Re-infections by Press Release Date

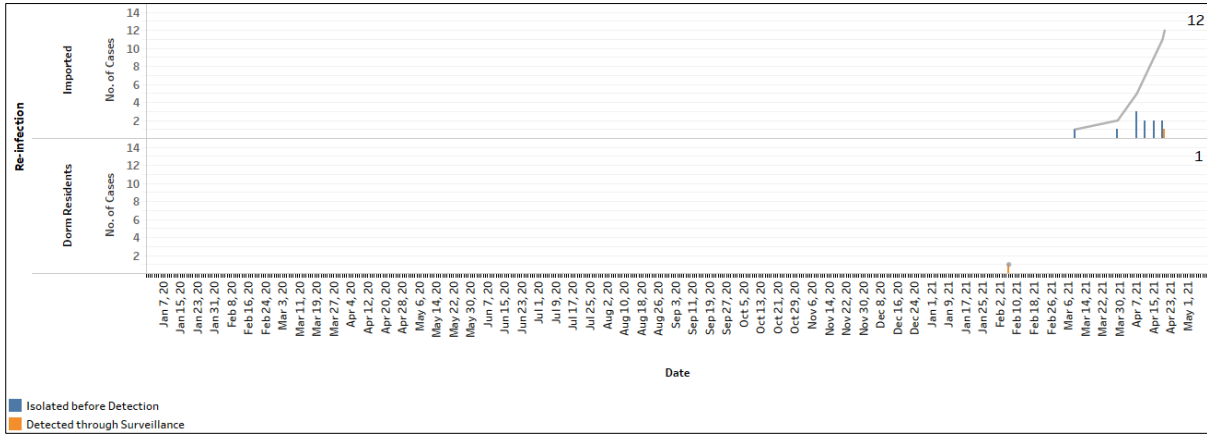


Figure 1.5: Epidemic Curve of Imported Cases by Press Release Date (left panel) and Arrival Date (right panel)

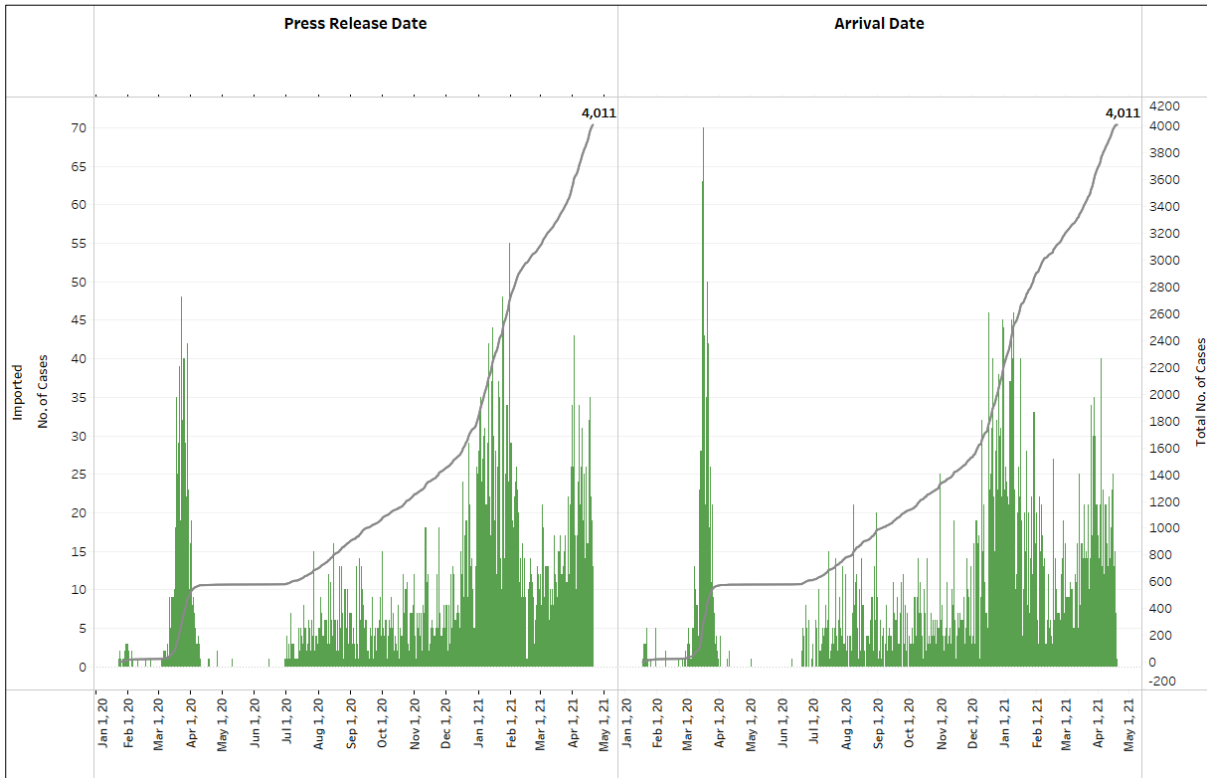


Figure 1.6: Epidemic Curve of Community Cases by Press Release Date (left panel) and by Symptom Onset or Notification Date⁶ (right panel)

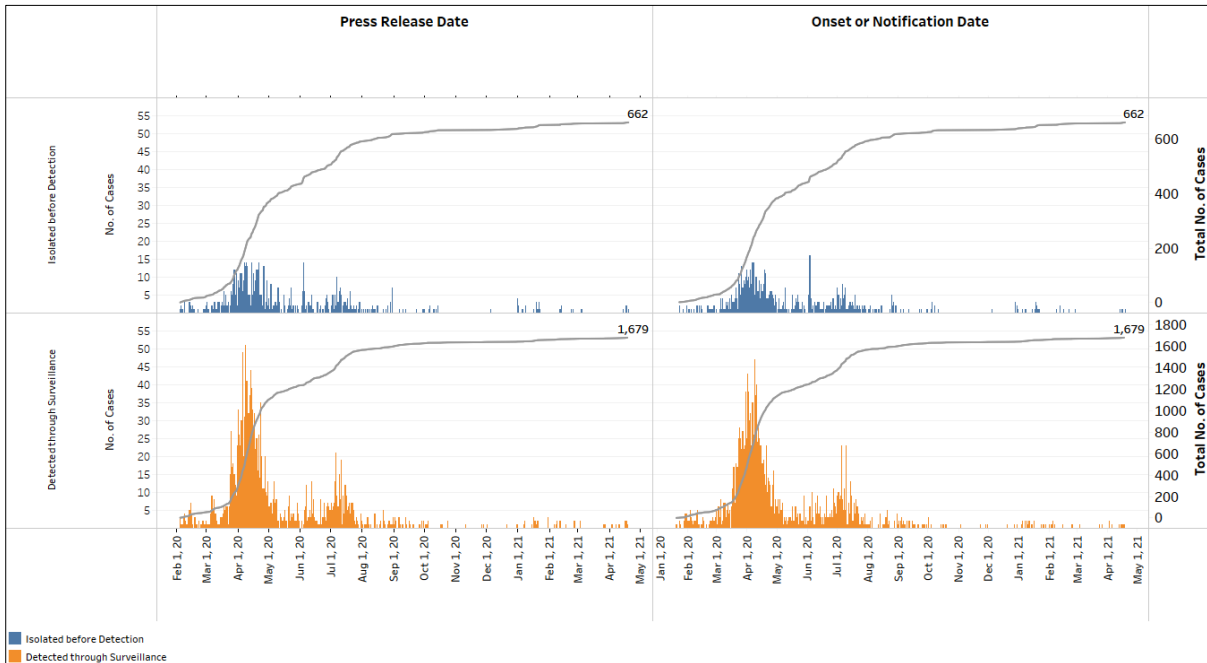
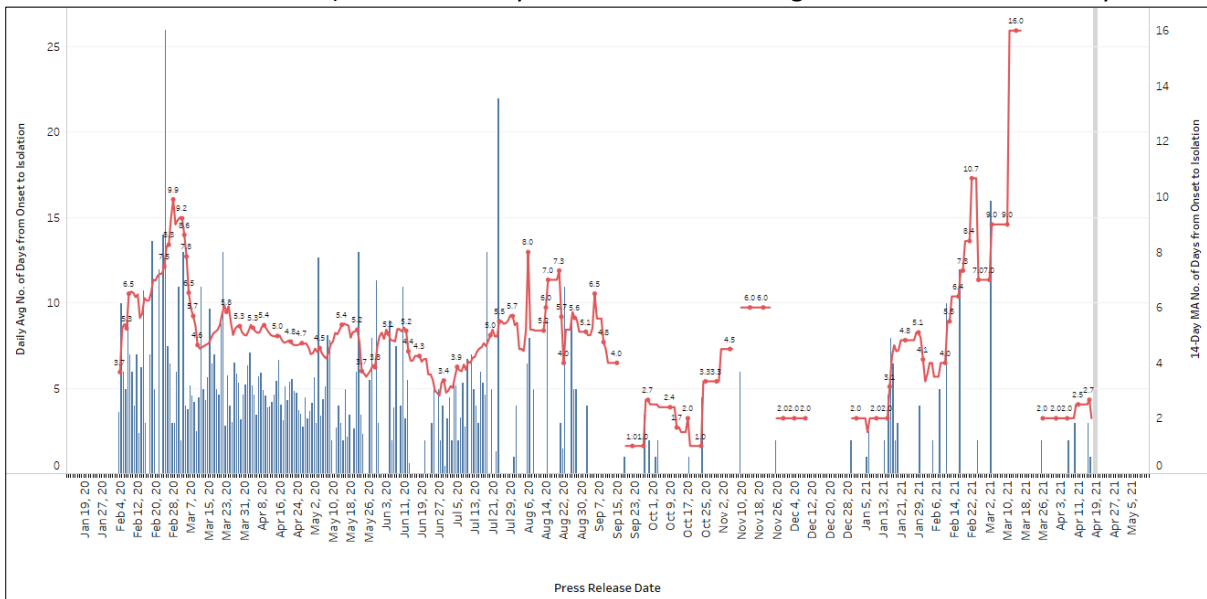


Figure 1.7: Average Number of Days from Onset of Symptoms to Isolation (QO, hospital admission or notification to MOH) for Community Cases Detected through Surveillance in Each Day



Line represents the 14-day moving average; Bar represents the daily average⁷

⁶ Date of notification was used for cases that did not display any symptoms. The numbers with onset in the past few days may see an increase as more cases are notified.

⁷ Area in grey demarcates data points for the past 3 days where some cases may still be pending epidemiological investigation. The bar graph shows the daily average number of days from symptoms onset to isolation, while the line graph shows the moving average for the past 14 days. Both graphs exclude cases with no onset date (asymptomatic) in the computation of the average. Community cases with symptoms who are isolated on the same day that symptoms occurred would have an isolation time of 0. There is a gap in the line graph from 16 to 18 Sep as there are no symptomatic cases in the preceding 14 days.

Figure 1.8: Weekly Reclassifications of Previously Reported Cases (*next update will be on 26 Apr*)

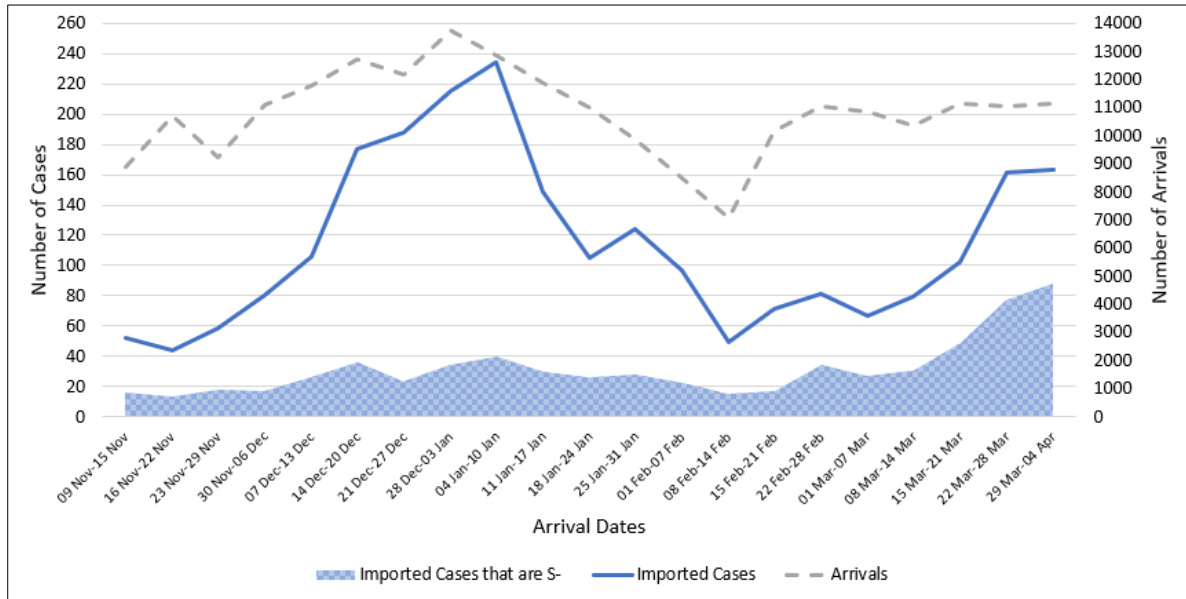
	Imported	Community Linked	Community Unlinked	Dorm Residents	Total
Total number of cases as at 12 Apr	3,833	1,537	796	54,512	60,678
Cases reported 13 Apr - 19 Apr	164	4	5	0	173
Net reclassifications of previously reported cases, incorporated 13 Apr - 19 Apr	1	0	-1	0	0
Total number of cases as at 19 Apr	3,998	1,541	800	54,512	60,851
Case Number	PR date	Occupation	Link Reclassification	Rationale for Link Reclassification	
61369	31 Mar 21	Overseas Student	Community Unlinked → Imported (UK) - Overseas infection	Case has recent travel history to UK. He is likely an intermittent shedder previously infected overseas.	

(2) Imported COVID-19 Cases

Figure 2.1: Serology and Symptom Status of Imported Cases Reported from 07 Apr to 13 Apr

Symptoms	S+	S-	Not Serology Tested	Pending Serology Result	Total No. of Cases
Asymptomatic	74	68	0	7	149
Symptomatic	4	15	0	2	21
Total	78	83	0	9	170

Figure 2.2: Weekly Total Number of Imported Cases, Imported Cases that are S- and Arrivals from 09 Nov 20 to 04 Apr 21 (next update will be on 26 Apr)⁸



⁸ Data from the past 2 weeks are excluded as arrivals on SHN who arrived in the past 2 weeks may not have their SHN exit test results yet. "Imported Cases that are S-" comprises imported cases who are (a) serology negative; or (b) not tested for serology. "Imported Cases with Ct values 30 and below" have low Ct values which are suggestive of high viral load. Notwithstanding, Ct values should be interpreted with caution along with other epidemiological and clinical factors.

(3) Number of COVID-19 Cases in Hospitals and Community Care Facilities**Figure 3.1:** Summary of Confirmed Cases by Status in the Past 14 Days

Press Release Date	Currently Admitted in Hospitals		In Care Facilities ⁹	Total Recovered		Total Demised	Total
	ICU	General Wards		Completed Isolation	Discharged from Hospital		
7-Apr	1	45	218	57,054	3,206	30	60,554
8-Apr	1	42	218	57,074	3,210	30	60,575
9-Apr	1	43	223	57,090	3,214	30	60,601
10-Apr	1	44	236	57,106	3,216	30	60,633
11-Apr	1	57	230	57,118	3,217	30	60,653
12-Apr	1	55	235	57,135	3,222	30	60,678
13-Apr	1	60	227	57,146	3,228	30	60,692
14-Apr	2	59	236	57,161	3,231	30	60,719
15-Apr	2	55	231	57,183	3,234	30	60,735
16-Apr	2	49	242	57,209	3,237	30	60,769
17-Apr	2	60	253	57,224	3,239	30	60,808
18-Apr	2	66	248	57,241	3,244	30	60,831
19-Apr	1	78	239	57,256	3,247	30	60,851
20-Apr	1	73	221	57,288	3,252	30	60,865

⁹ Community Care Facilities (i.e. D'Resort, EXPO, Tuas South), Private Hospitals (i.e. Concord International Hospital, Mt Elizabeth Hospital, Gleneagles Hospital, Mt Elizabeth Novena Hospital, Parkway East Hospital), Community Hospitals (i.e. Bright Vision Hospital) and other care facilities.

(4) Number of Stay-Home-Notice (SHN) Issued

Figure 4.1: Daily Number of SHN issued (19 Feb 2020 to 19 Apr 2021)

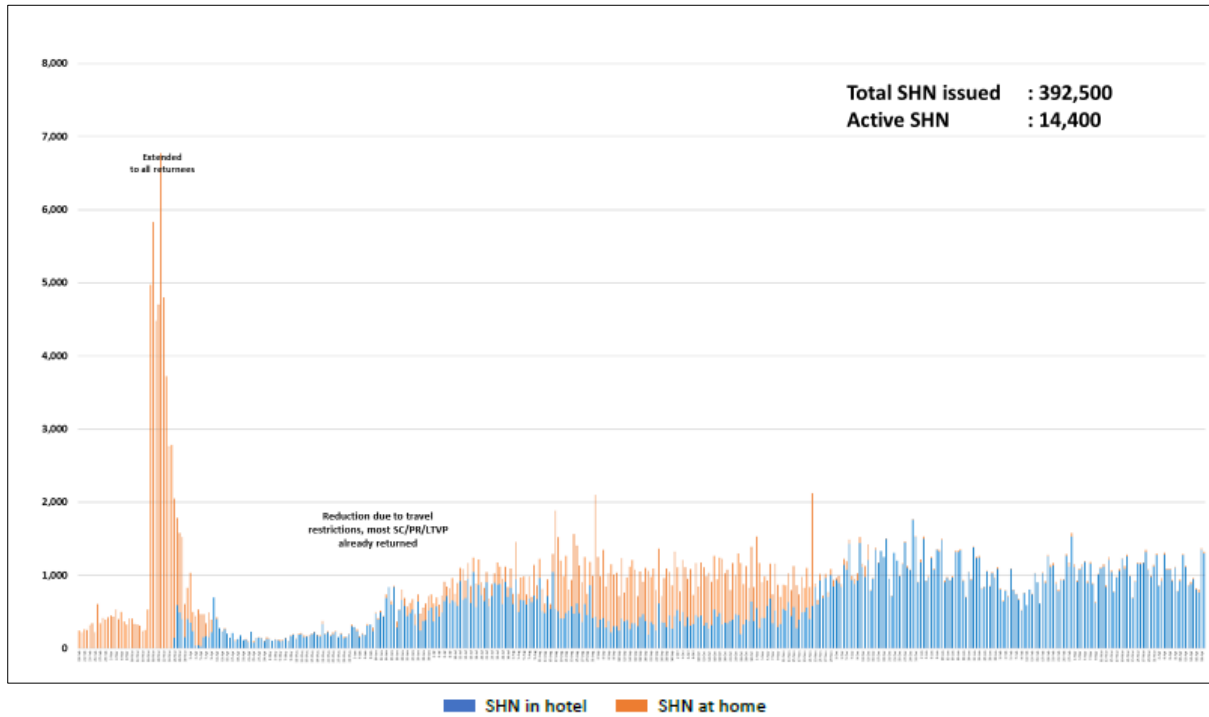
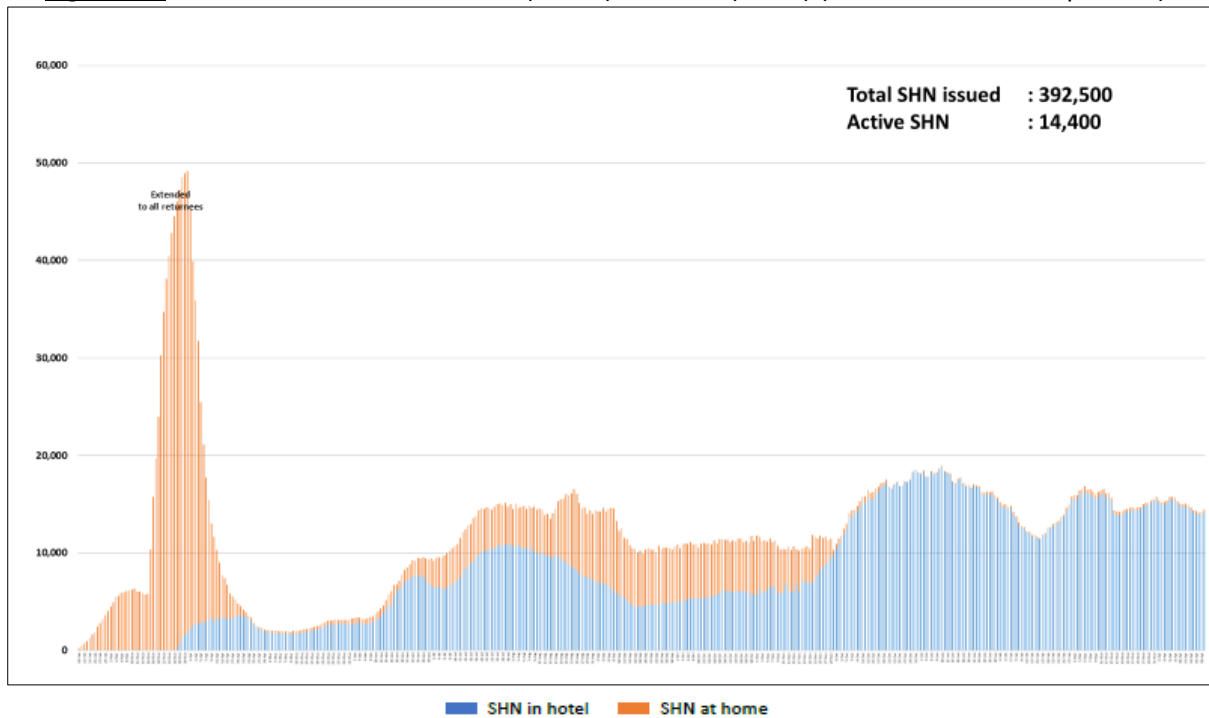


Figure 4.2: Active Stock Number of SHN (Home) and SHN (Hotel) (19 Feb 2020 to 19 Apr 2021)



(5) Number of Quarantine Orders (QO) Generated

Figure 5.1: Daily Number of QOs Generated

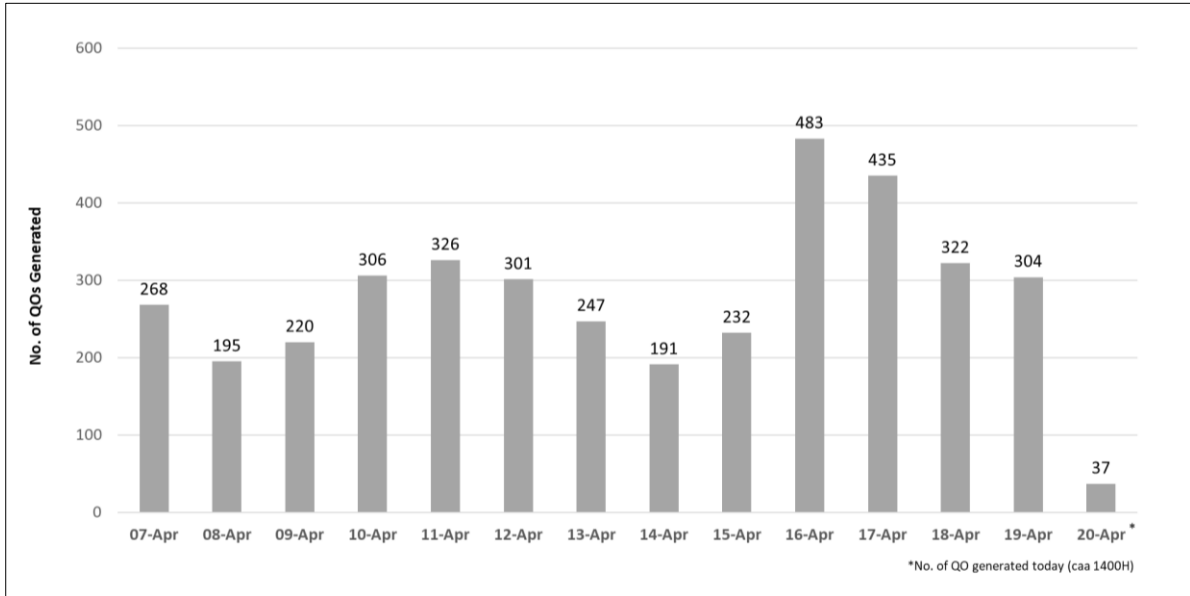


Figure 5.2: Active Number of Persons Under Quarantine (PUQs)

