

25 June 2021 Daily Report on COVID-19**(1) Number of COVID-19 Cases****Figure 1.1:** Breakdown of New Confirmed Cases in the Past 14 Days

Press Release Date	Imported			Non-Imported Cases														All Cases
				Community Cases								Dorm Residents ¹						
	Isolated before Detection	Detected through Surveillance ²	Sub-Total	Isolated before Detection ³				Detected through Surveillance ⁴				Sub-Total	Incidence Rate ⁵ (per 100,000)	Isolated before Detection ³	Detected through Surveillance ⁴	No. of Cases	Incidence Rate ⁵ (per 100,000)	
				SC/PR	G or F	Visitor	Sub-Total	SC/PR	G or F	Visitor	Sub-Total							
Before 12-Jun	4,381	329	4,710	679	367	7	1,053	1,213	733	11	1,957	3,010	-	54,525		54,525	-	62,245
12-Jun	9	0	9	0	3	0	3	3	3	0	6	9	0.17	0	0	0	0	18
13-Jun	3	0	3	4	1	0	5	3	2	0	5	10	0.19	0	0	0	0	13
14-Jun	6	0	6	7	5	0	12	5	0	1	6	18	0.33	1	0	1	0.31	25
15-Jun	0	0	0	3	2	0	5	7	2	0	9	14	0.26	0	0	0	0	14
16-Jun	5	0	5	9	1	0	10	6	3	0	9	19	0.35	0	0	0	0	24
17-Jun	7	0	7	10	2	2	14	6	0	0	6	20	0.37	0	0	0	0	27
18-Jun	2	0	2	5	0	0	5	7	2	0	9	14	0.26	0	0	0	0	16
19-Jun	7	0	7	6	1	0	7	4	3	0	7	14	0.26	0	0	0	0	21
20-Jun	2	0	2	2	1	0	3	5	1	0	6	9	0.17	0	0	0	0	11
21-Jun	3	0	3	3	2	0	5	5	3	0	8	13	0.24	0	0	0	0	16
22-Jun	3	0	3	3	0	0	3	9	3	0	12	15	0.28	0	0	0	0	18
23-Jun	9	0	9	7	1	0	8	5	0	0	5	13	0.24	0	0	0	0	22
24-Jun	9	0	9	11	0	0	11	3	0	0	3	14	0.26	0	0	0	0	23
25-Jun	5	0	5	2	2	0	4	9	2	0	11	15	0.28	0	0	0	0	20
Total since start of outbreak	4,451	329	4,780	751	388	9	1,148	1,290	757	12	2,059	3,207	-	54,526		54,526	-	62,513
Population at risk												5,381,000				323,000		5,704,000
Prevalence												0.06%				16.88%		1.10%

Notes

¹ Includes PRs and visitors residing in dorms. Breakdown of dorm cases into those detected through surveillance and those isolated before detection is not available before 24 Aug.

² 272 cases were reported before early Apr, and constitute the 1st wave of imported cases.

³ Cases who were already quarantined and tested during quarantine to determine their status.

⁴ Cases who were identified through surveillance testing, such as the bi-weekly Rostered Routine Testing (RRT) of at-risk workers and testing of those with Acute Respiratory Illness (ARI) symptoms.

⁵ Incidence rates are rounded to two significant figures.

Figure 1.2: Epidemic Curve of the COVID-19 Outbreak by Press Release Date

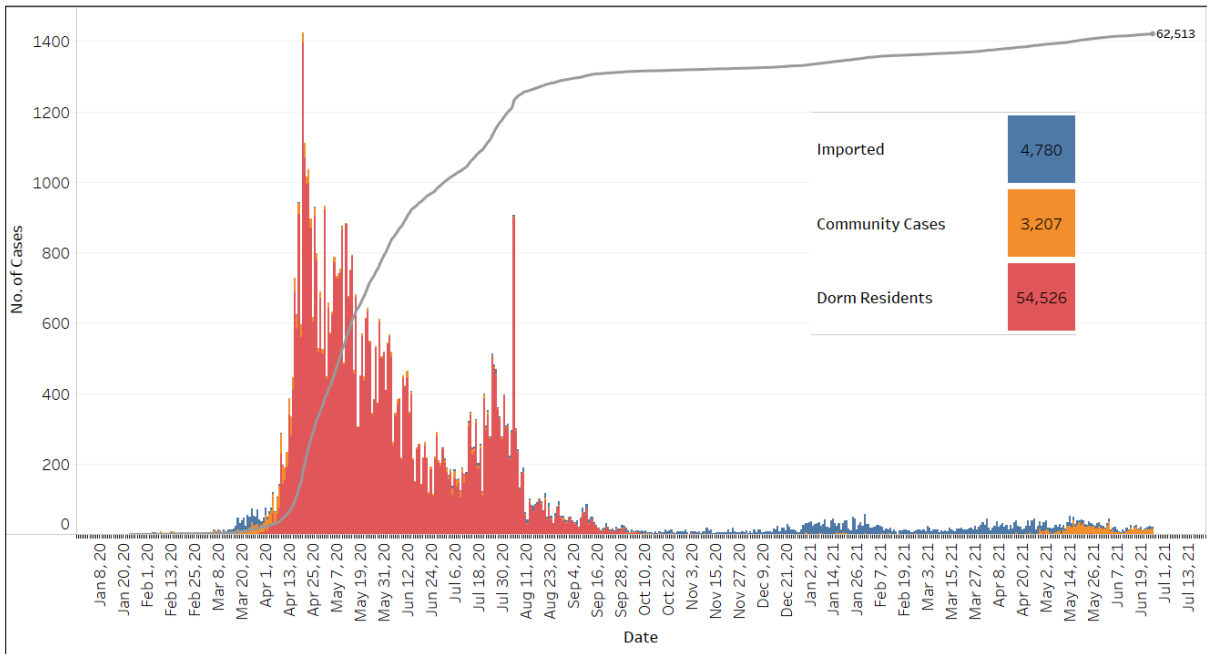


Figure 1.3: Epidemic Split Curve of the COVID-19 Outbreak by Press Release Date

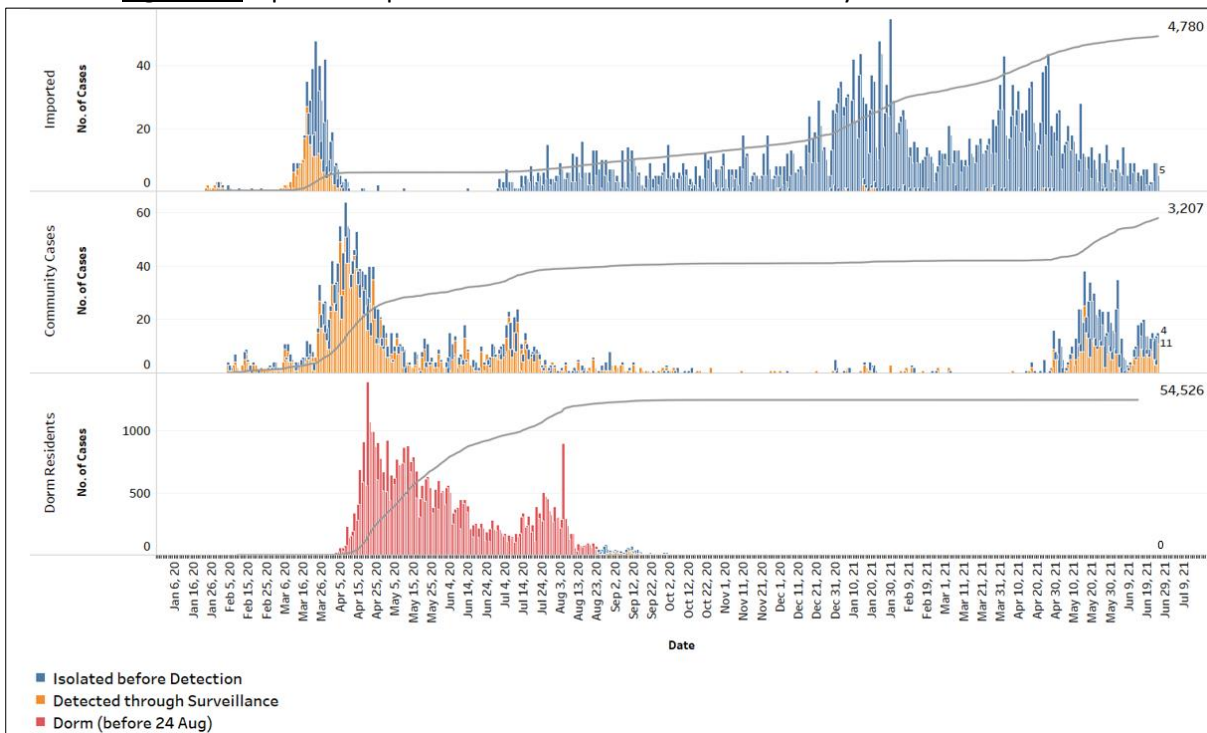


Figure 1.4: Epidemic Curve of COVID-19 Re-infections by Press Release Date

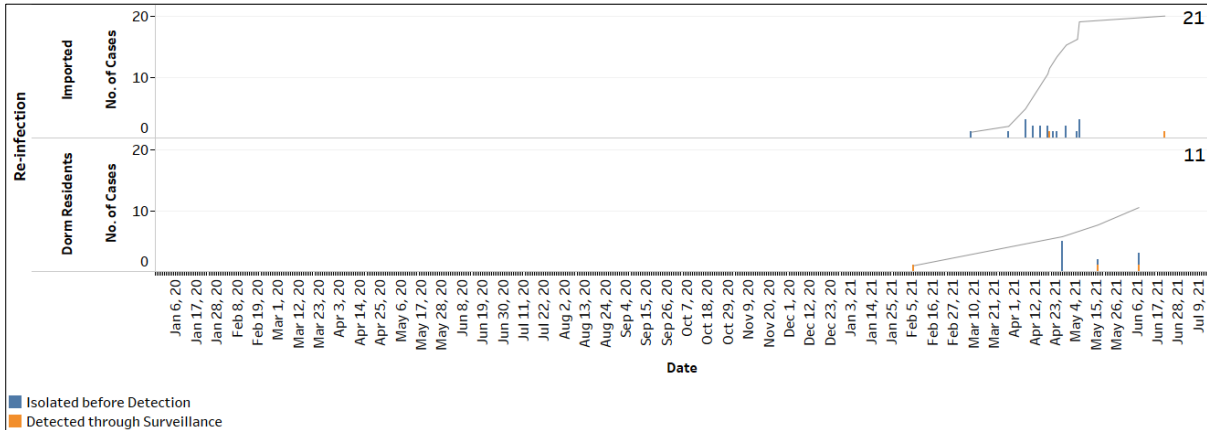


Figure 1.5: Epidemic Curve of Imported Cases by Press Release Date (left panel) and Arrival Date (right panel)

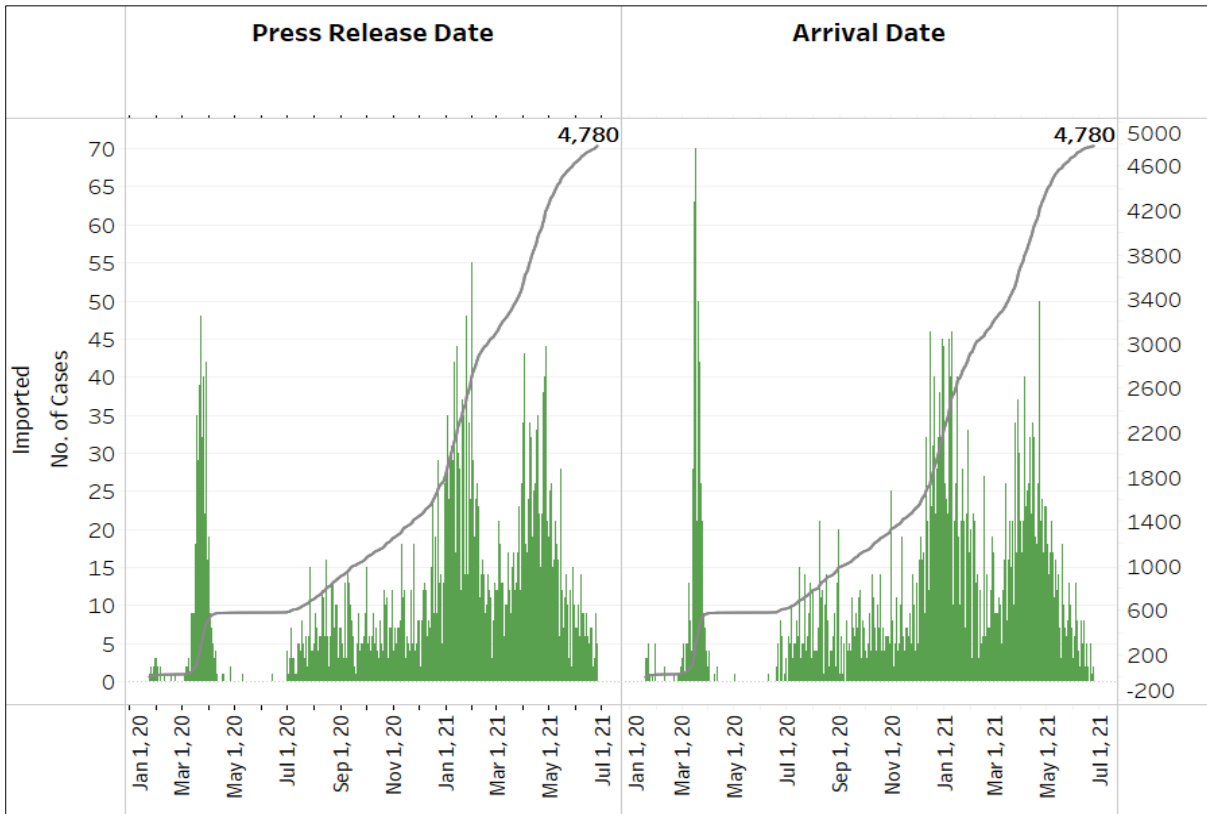


Figure 1.6: Epidemic Curve of Community Cases by Press Release Date (left panel) and by Symptom Onset or Notification Date⁶ (right panel)

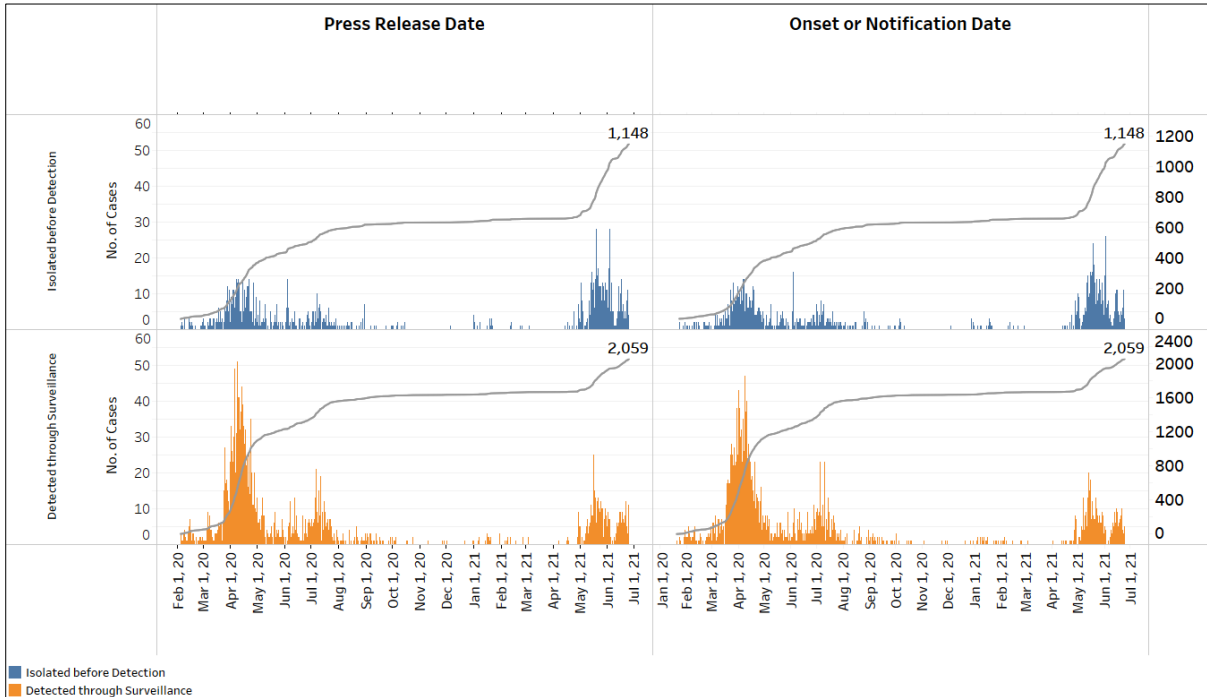
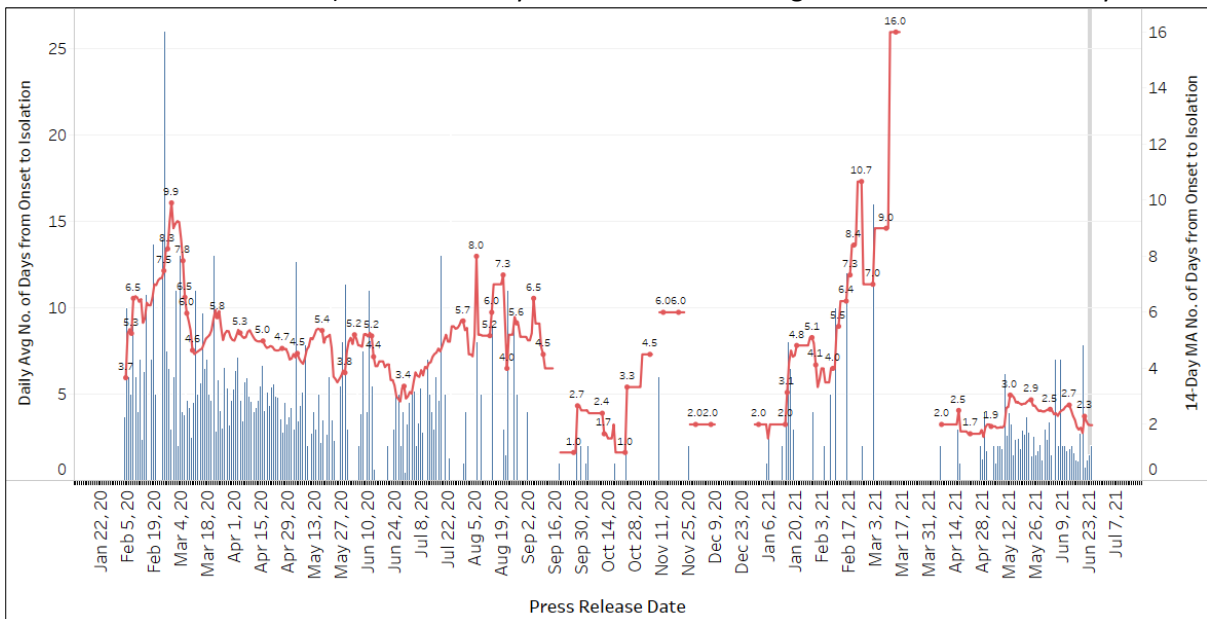


Figure 1.7: Average Number of Days from Onset of Symptoms to Isolation (QO, hospital admission or notification to MOH) for Community Cases Detected through Surveillance in Each Day



Line represents the 14-day moving average; Bar represents the daily average⁷

⁶ Date of notification was used for cases that did not display any symptoms. The numbers with onset in the past few days may see an increase as more cases are notified.

⁷ Area in grey demarcates data points for the past 3 days where some cases may still be pending epidemiological investigation. The bar graph shows the daily average number of days from symptoms onset to isolation, while the line graph shows the moving average for the past 14 days. Both graphs exclude cases with no onset date (asymptomatic) in the computation of the average. Community cases with symptoms who are isolated on the same day that symptoms occurred would have an isolation time of 0. There is a gap in the line graph from 16 to 18 Sep as there are no symptomatic cases in the preceding 14 days.

Figure 1.8: Weekly Reclassifications of Previously Reported Cases (next update will be on 28 Jun)

	Imported	Community Linked	Community Unlinked	Dorm Residents	Total
Total number of cases as at 14 Jun	4,728	2,146	901	54,526	62,301
Cases reported 15 Jun - 21 Jun	26	79	24	0	129
Net reclassifications of previously reported cases, incorporated 15 Jun - 21 Jun	0	8	-8	0	0
Total number of cases as at 21 Jun	4,754	2,233	917	54,526	62,430

Case Number	PR date	Occupation	Link Reclassification	Rationale for Link Reclassification
63320	16 May 2021	Casino Dealer	Community Unlinked → Community Linked (Case 63350)	Case 64217 is wife of 64270 who visits the 115 BMV Market often. 64270 likely passed to her as his symptom onset was earlier, although he was detected later.
63348	17 May 2021	Tax Officer	Community Unlinked → Community Linked (Case 63178)	Case is the index of his cluster 63320. He is linked to case 63350, a social contact with an earlier symptom onset.
63446	19 May 2021	Service Engineer	Community Unlinked → Community Linked (Case 63178)	Case is phylogenetically linked to case 63511, a workplace contact.
64217	14 Jun 2021	Cleaner	Community Unlinked → Community Linked (Cluster 64132)	Case had dined at the same dining establishment as 63178.
64326	19 Jun 2021	Homemaker	Community Unlinked → Community Unlinked (Index of Cluster 64326)	Case is the index case of the cluster.
64330	19 Jun 2021	Retiree	Community Unlinked → Community Unlinked (Index of Cluster 64330)	Case is the index case of the cluster.
64333	19 Jun 2021	Foreign Domestic Worker	Community Unlinked → Community Linked (Cluster 64326)	Case and the index case of the cluster, 64326, stay at the same residential location.
64342	20 Jun 2021	Retiree	Community Unlinked → Community Linked (Cluster 64330)	Case and the index case of the cluster, 64330, stay at the same residential location.
64345	20 Jun 2021	Unemployed	Community Unlinked → Community Linked (Cluster 64330)	Case and the index case of the cluster, 64330, stay at the same residential location.

Data updated as at 25 June 2021, 1200 hrs

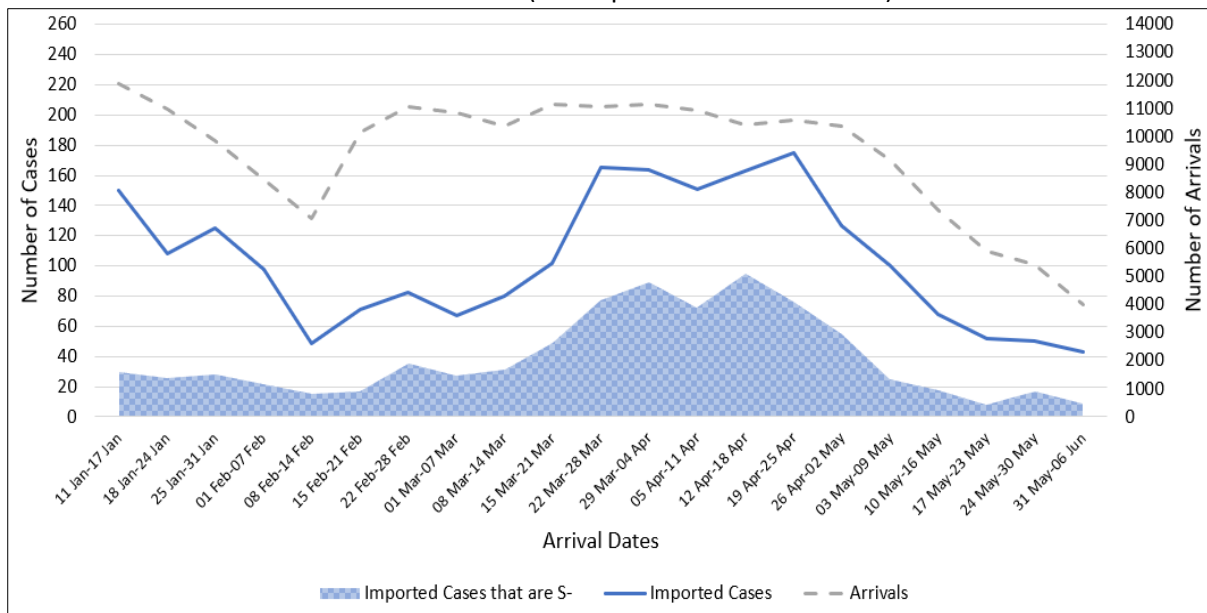
Case Number	PR date	Occupation	Link Reclassification	Rationale for Link Reclassification
64353	20 Jun 2021	Engineer	Community Unlinked → Community Linked (Cluster 64326)	Case and the index case of the cluster, 64326, stay at the same residential location.

(2) Imported COVID 19 Cases

Figure 2.1: Serology and Symptom Status of Imported Cases Reported from 12 Jun to 18 Jun

Symptoms	S+	S-	Not Serology Tested	Pending Serology Result	Total No. of Cases
Asymptomatic	19	7	0	1	27
Symptomatic	1	4	0	0	5
Total	20	11	0	1	32

Figure 2.2: Weekly Total Number of Imported Cases, Imported Cases that are S- and Arrivals from 11 Jan 21 to 6 Jun 21 (next update will be on 28 Jun)⁸



⁸ Data from the past 2 weeks are excluded as cases on SHN who arrived in the past 2 weeks may not have their test results yet. "Imported Cases that are S-" comprises imported cases who are (a) serology negative; or (b) not tested for serology.

(3) Number of COVID 19 Cases in Hospitals and Community Care Facilities**Figure 3.1:** Summary of Confirmed Cases by Status in the Past 14 Days

Press Release Date	Currently Admitted in Hospitals		In Care Facilities ⁹	Total Recovered		Total Demised	Total
	ICU	General Wards		Completed Isolation	Discharged from Hospital		
12-Jun	1	124	266	58,301	3,537	34	62,263
13-Jun	1	129	243	58,323	3,546	34	62,276
14-Jun	2	136	235	58,341	3,553	34	62,301
15-Jun	2	135	233	58,351	3,560	34	62,315
16-Jun	1	145	228	58,366	3,565	34	62,339
17-Jun	1	150	221	58,388	3,572	34	62,366
18-Jun	1	151	209	58,409	3,578	34	62,382
19-Jun	1	152	193	58,438	3,585	34	62,403
20-Jun	1	141	196	58,450	3,592	34	62,414
21-Jun	0	134	191	58,459	3,611	35	62,430
22-Jun	2	140	173	58,486	3,612	35	62,448
23-Jun	5	136	181	58,496	3,617	35	62,470
24-Jun	4	132	182	58,517	3,623	35	62,493
25-Jun	4	135	178	58,532	3,629	35	62,513

⁹ Community Care Facilities (i.e. D'Resort, EXPO, Tuas South), Private Hospitals (i.e. Concord International Hospital, Mt Elizabeth Hospital, Gleneagles Hospital, Mt Elizabeth Novena Hospital, Parkway East Hospital), Community Hospitals (i.e. Bright Vision Hospital) and other care facilities.

(4) Number of Stay Home Notice (SHN) Issued

Figure 4.1: Daily Number of SHN issued (19 Feb 2020 to 24 Jun 2021)

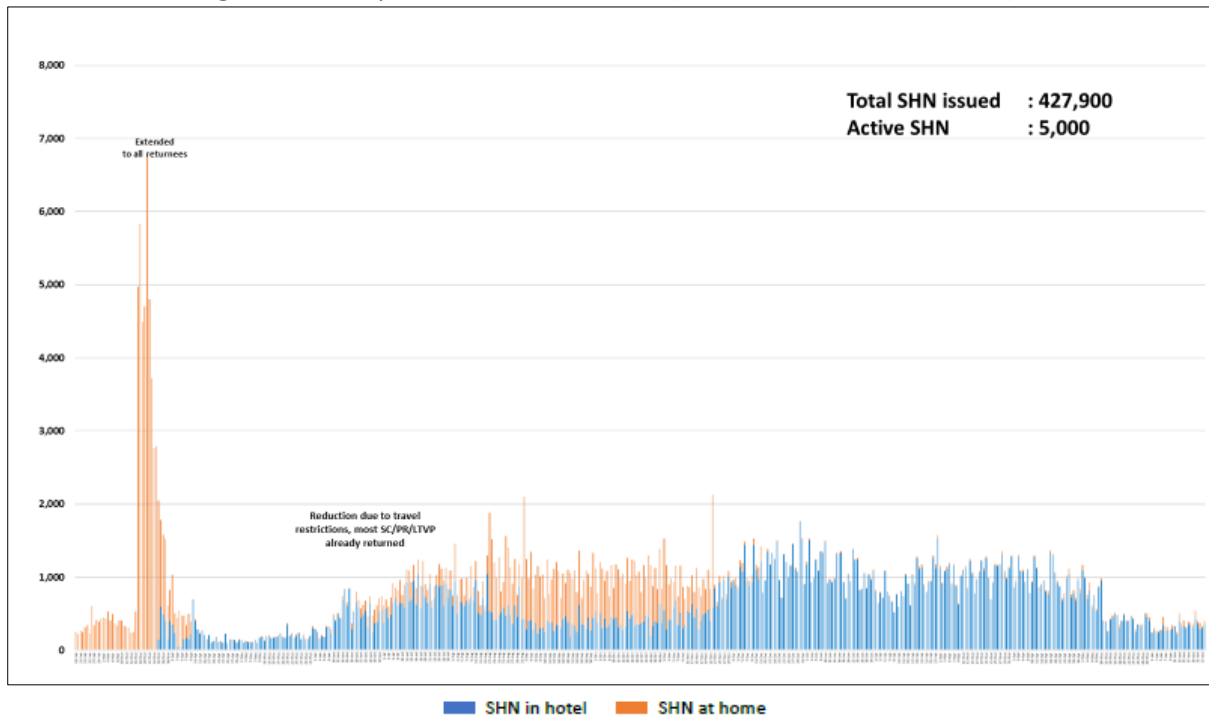
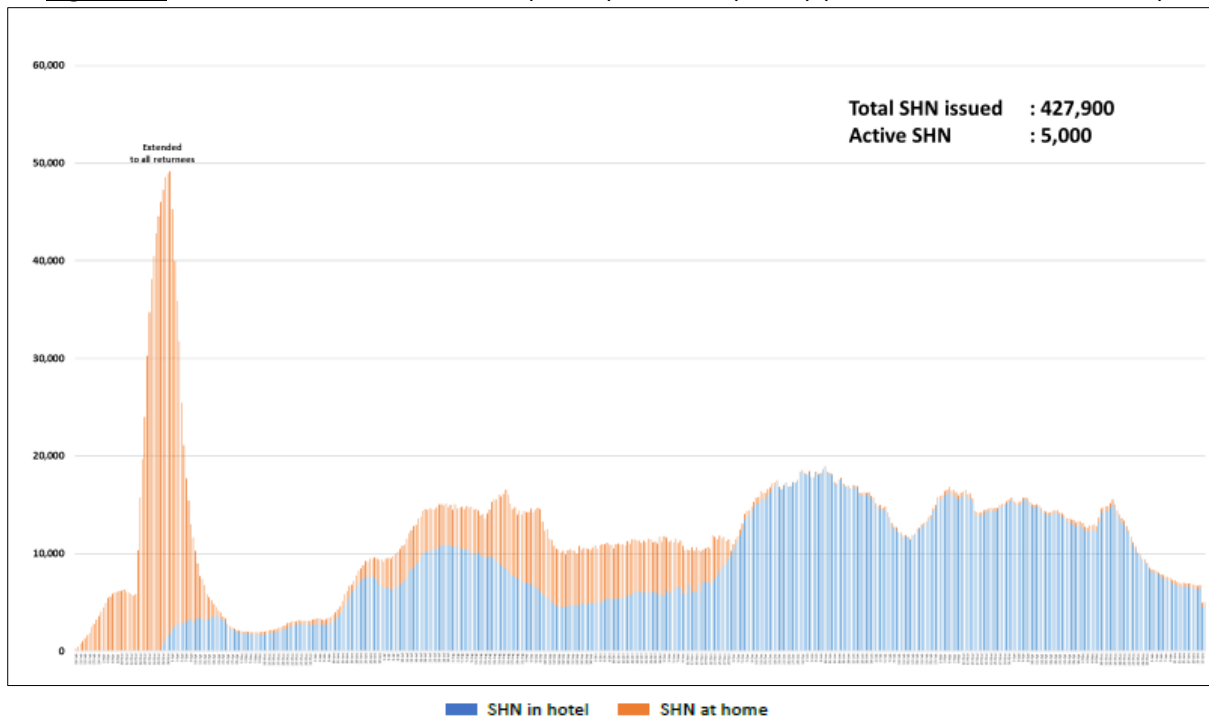


Figure 4.2: Active Stock Number of SHN (Home) and SHN (Hotel) (19 Feb 2020 to 24 Jun 2021)



(5) Number of Quarantine Orders (QO) Generated

Figure 5.1: Daily Number of QOs Generated

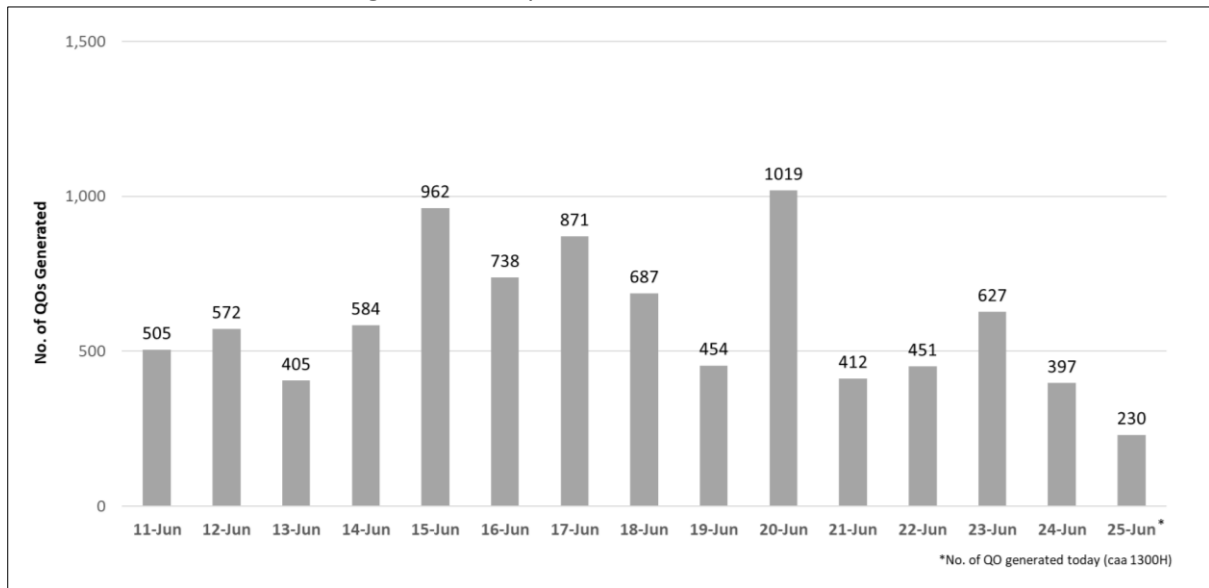


Figure 5.2: Active Number of Persons Under Quarantine (PUQs)

