

11 July 2021 Daily Report on COVID-19**(1) Number of COVID-19 Cases****Figure 1.1:** Breakdown of New Confirmed Cases in the Past 14 Days

Press Release Date	Imported			Non-Imported Cases														All Cases
				Community Cases								Dorm Residents ¹						
	Isolated before Detection	Detected through Surveillance ²	Sub-Total	Isolated before Detection ³				Detected through Surveillance ⁴				Sub-Total	Incidence Rate ⁵ (per 100,000)	Isolated before Detection ³	Detected through Surveillance ⁴	No. of Cases	Incidence Rate ⁵ (per 100,000)	
				SC/PR	G or F	Visitor	Sub-Total	SC/PR	G or F	Visitor	Sub-Total							
Before 28-Jun	4,457	330	4,787	766	388	9	1,163	1,298	758	12	2,068	3,231	-	54,526		54,526	-	62,544
28-Jun	5	0	5	4	0	0	4	0	0	0	0	4	0.074	0	0	0	0	9
29-Jun	5	0	5	3	1	0	4	1	0	0	1	5	0.093	0	0	0	0	10
30-Jun	11	0	11	4	1	0	5	0	0	0	0	5	0.093	0	0	0	0	16
1-Jul	6	0	6	3	0	0	3	1	0	0	1	4	0.074	0	0	0	0	10
2-Jul	7	0	7	0	0	0	0	2	1	0	3	3	0.056	0	0	0	0	10
3-Jul	3	0	3	4	0	0	4	0	0	0	0	4	0.074	0	0	0	0	7
4-Jul	10	0	10	0	0	0	0	1	0	0	1	1	0.019	0	0	0	0	11
5-Jul	7	0	7	2	2	0	4	1	1	0	2	6	0.11	0	0	0	0	13
6-Jul	8	0	8	0	0	0	0	0	1	0	1	1	0.019	0	1	1	0.31	10
7-Jul	7	0	7	0	3	0	3	2	0	0	2	5	0.093	0	0	0	0	12
8-Jul	13	0	13	0	0	0	0	1	2	0	3	3	0.056	0	0	0	0	16
9-Jul	9	0	9	0	0	0	0	1	0	0	1	1	0.019	0	0	0	0	10
10-Jul	6	0	6	0	0	0	0	0	0	0	0	0	0	0	0	0	0	6
11-Jul	7	0	7	0	0	0	0	0	1	0	1	1	0.019	0	0	0	0	8
Total since start of outbreak	4,561	330	4,891	786	395	9	1,190	1,308	764	12	2,084	3,274	-	54,527		54,527	-	62,692
Population at risk												5,381,000				323,000		5,704,000
Prevalence												0.06%				16.88%		1.10%

Notes

¹ Includes PRs and visitors residing in dorms. Breakdown of dorm cases into those detected through surveillance and those isolated before detection is not available before 24 Aug.

² 272 cases were reported before early Apr, and constitute the 1st wave of imported cases.

³ Cases who were already quarantined and tested during quarantine to determine their status.

⁴ Cases who were identified through surveillance testing, such as the bi-weekly Rostered Routine Testing (RRT) of at-risk workers and testing of those with Acute Respiratory Illness (ARI) symptoms.

⁵ Incidence rates are rounded to two significant figures.

Figure 1.2: Epidemic Curve of the COVID-19 Outbreak by Press Release Date

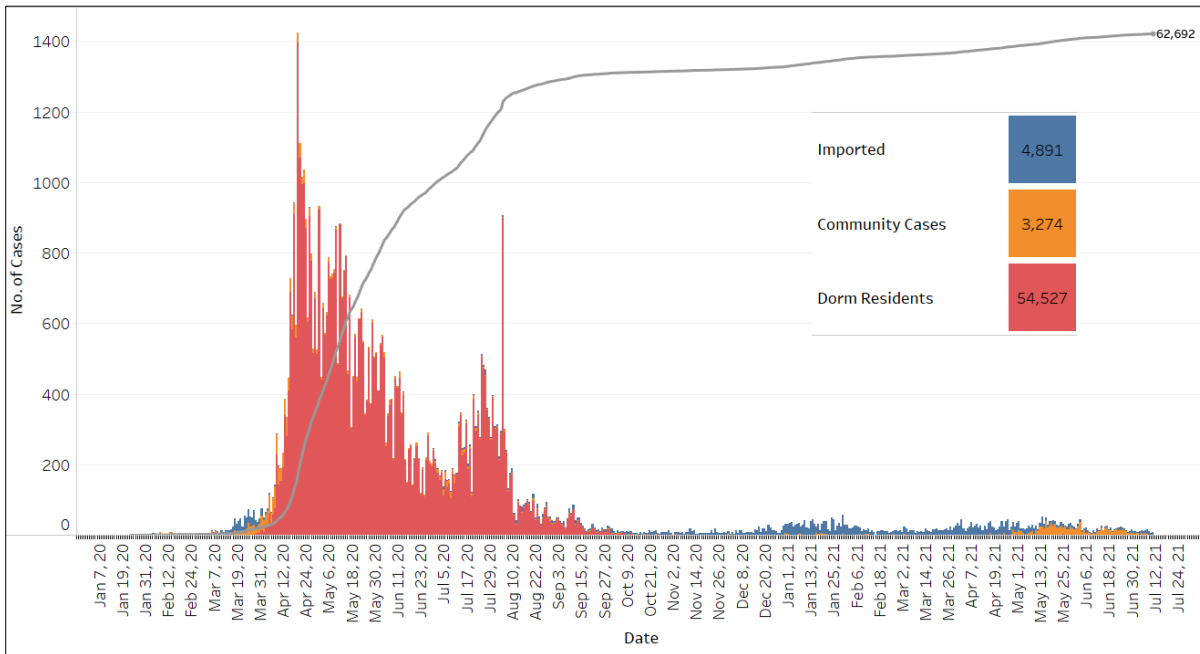


Figure 1.3: Epidemic Split Curve of the COVID-19 Outbreak by Press Release Date

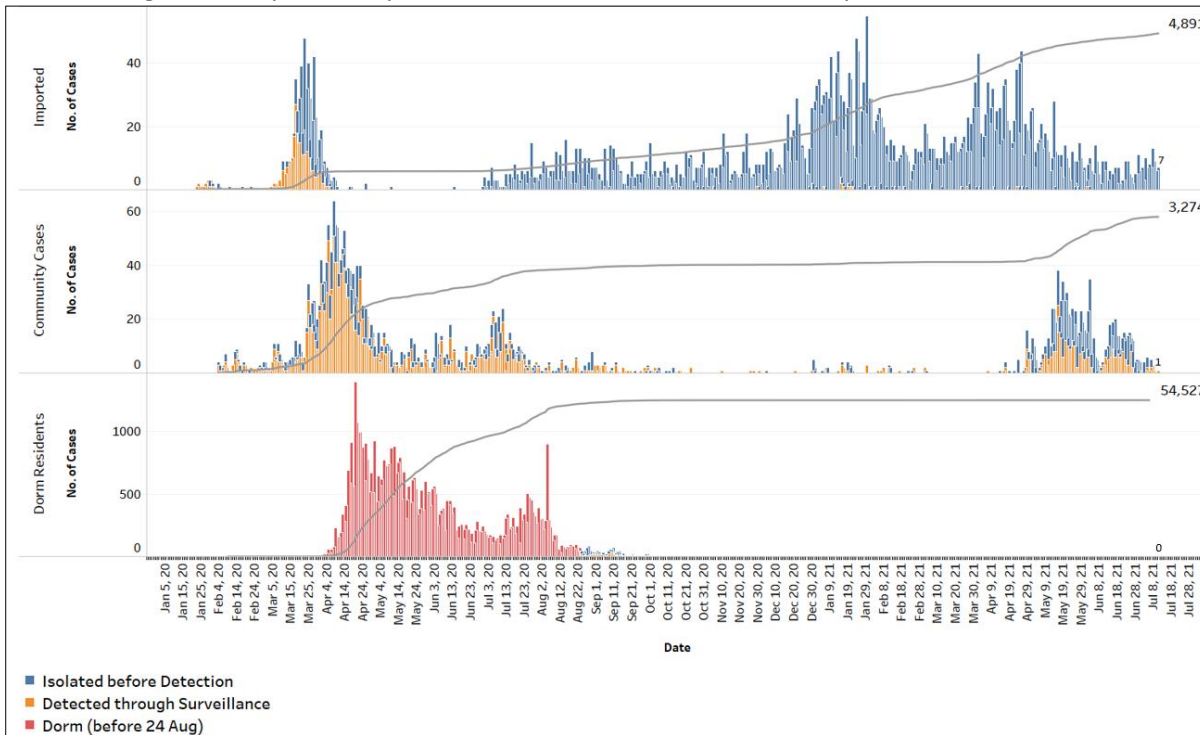


Figure 1.4: Epidemic Curve of COVID-19 Re-infections by Press Release Date

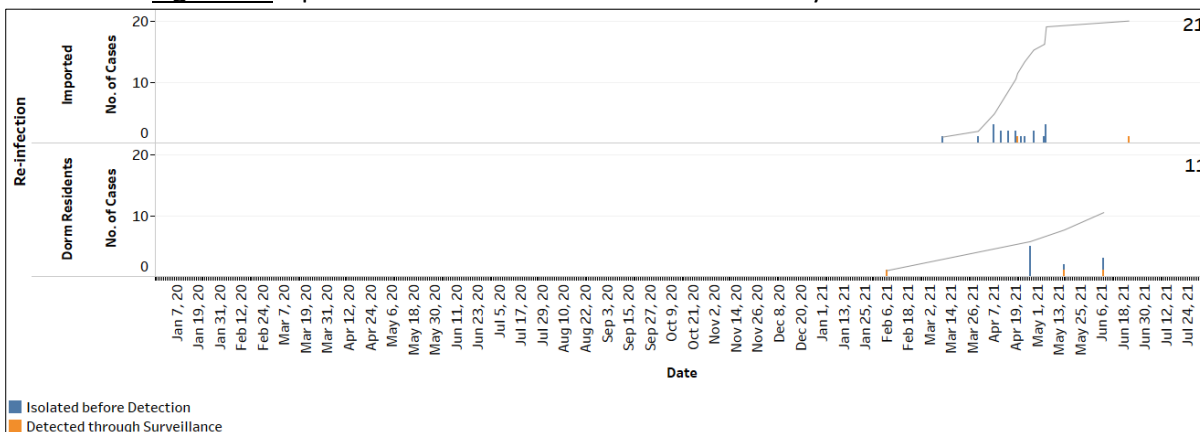


Figure 1.5: Epidemic Curve of Imported Cases by Press Release Date (left panel) and Arrival Date (right panel)

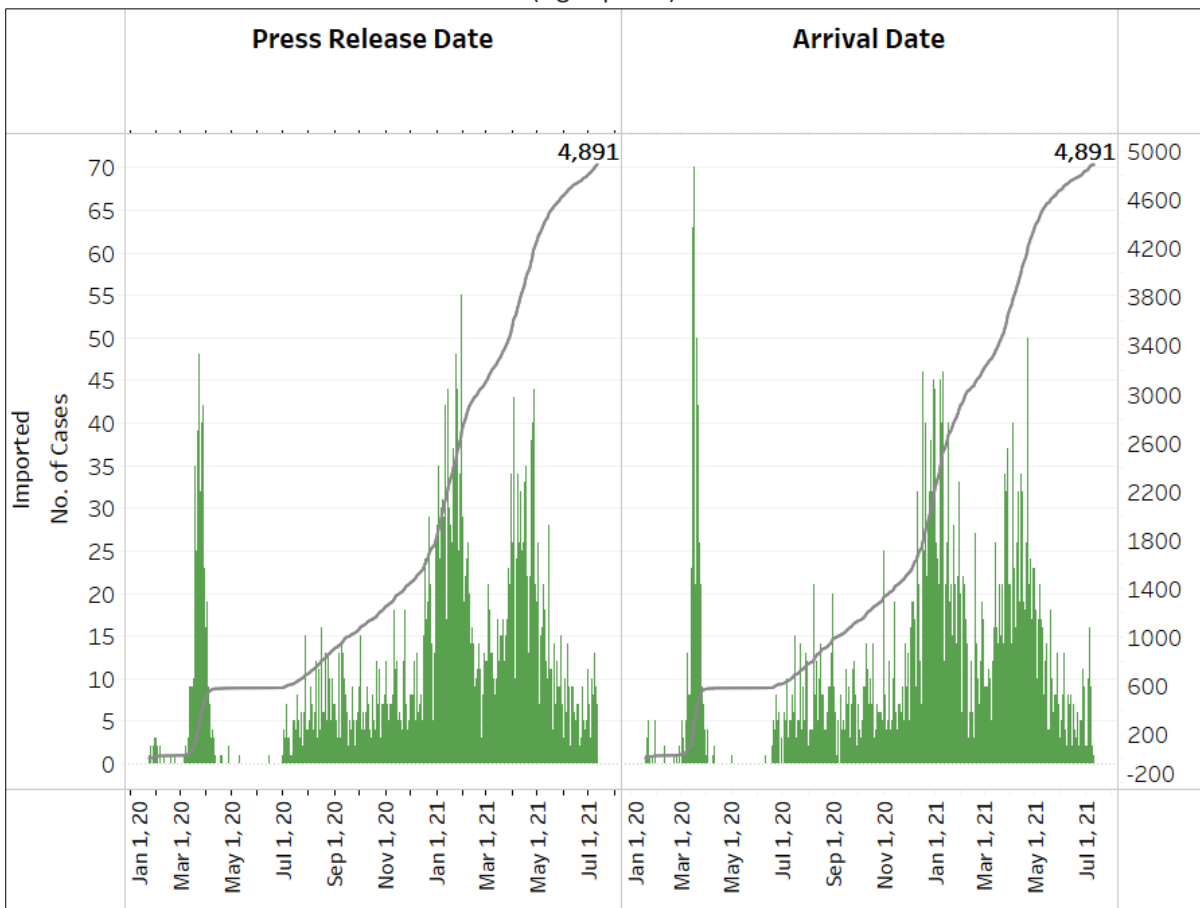


Figure 1.6: Epidemic Curve of Community Cases by Press Release Date (left panel) and by Symptom Onset or Notification Date⁶ (right panel)

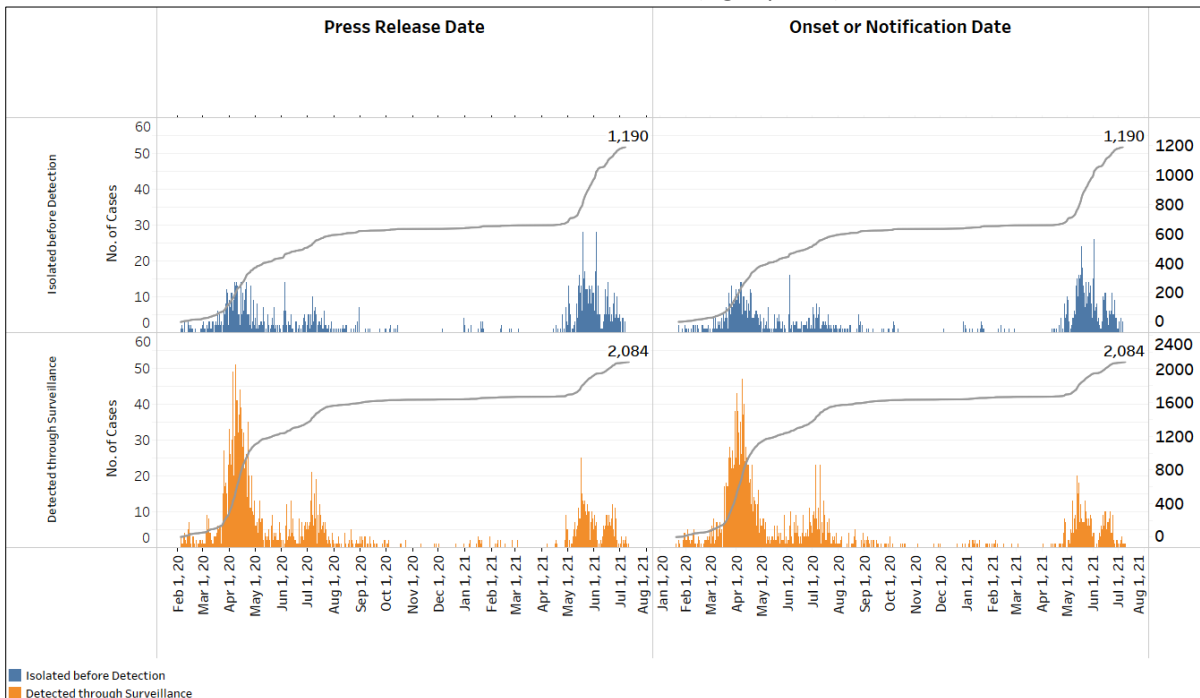
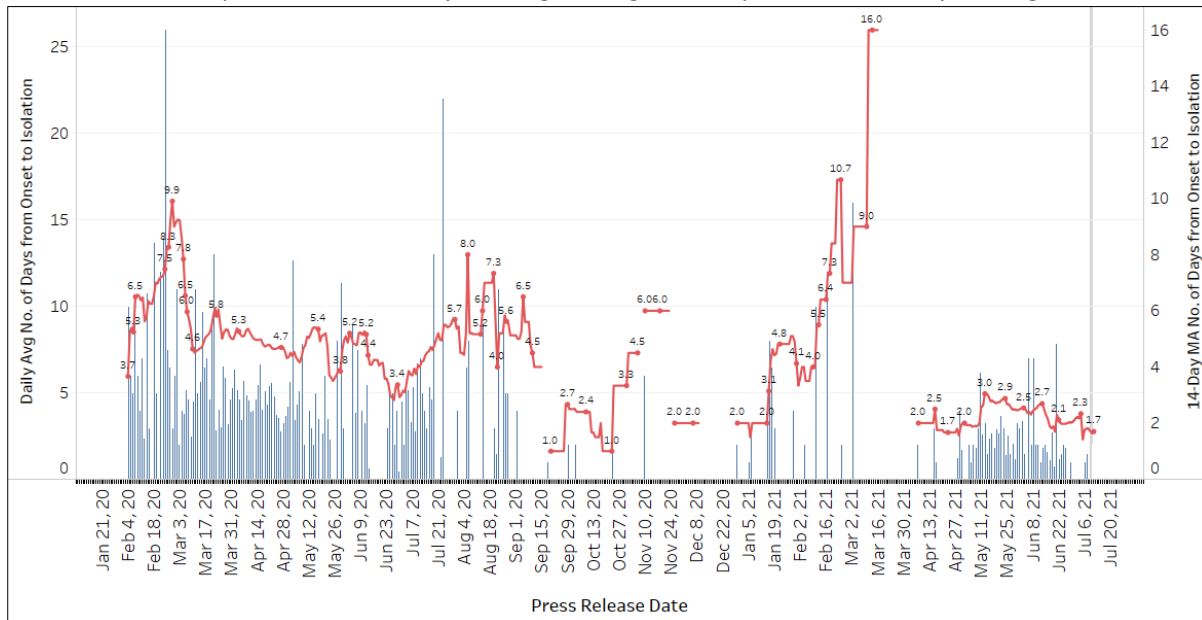


Figure 1.7: Average Number of Days from Onset of Symptoms to Isolation (QO, hospital admission or notification to MOH) for Community Cases Detected through Surveillance in Each Day
Line represents the 14-day moving average; Bar represents the daily average⁷



⁶ Date of notification was used for cases that did not display any symptoms. The numbers with onset in the past few days may see an increase as more cases are notified.

⁷ Area in grey demarcates data points for the past 3 days where some cases may still be pending epidemiological investigation. The bar graph shows the daily average number of days from symptoms onset to isolation, while the line graph shows the moving average for the past 14 days. Both graphs exclude cases with no onset date (asymptomatic) in the computation of the average. Community cases with symptoms who are isolated on the same day that symptoms occurred would have an isolation time of 0. There is a gap in the line graph from 16 to 18 Sep as there are no symptomatic cases in the preceding 14 days.

Figure 1.8: Weekly Reclassifications of Previously Reported Cases (next update will be on 12 Jul)

	Imported	Community Linked	Community Unlinked	Dorm Residents	Total
Total number of cases as at 28 Jun	4,791	2,316	920	54,526	62,553
Cases reported 29 Jun - 5 Jul	49	24	4	0	77
Net reclassifications of previously reported cases, incorporated 29 Jun - 5 Jul	0	4	-4	0	0
Total number of cases as at 05 Jul	4,840	2,344	920	54,526	62,630

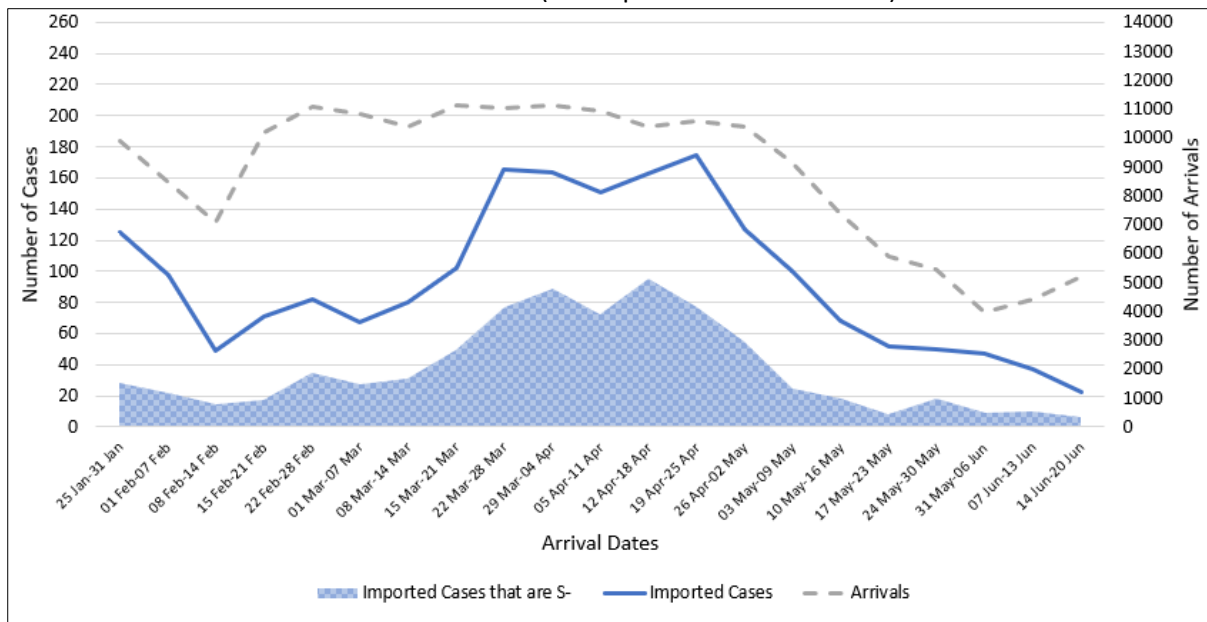
Case Number	PR date	Occupation	Link Reclassification	Rationale for Link Reclassification
64286	17 Jun 21	Cashier	Community Unlinked → Community Linked (Case 64186)	Case is phylogenetically linked to Case 64186
64399	23 Jun 21	Staff Nurse	Community Unlinked → Community Linked (Cases 64308, 64254, 64273, 64322, 64300, 64298, 64296)	Case attended to the seven cases listed and is phylogenetically linked to them
64318	18 Jun 21	Retiree	Community Unlinked → Community Linked (Cluster 64132)	Case has epidemiological and phylogenetic links to cases under Cluster 64132
63714	25 May 21	Retiree	Community Unlinked → Community Linked (Case 63747)	Case is linked to Case 63747, who is the likely primary case of Cluster 63714

(2) Imported COVID 19 Cases

Figure 2.1: Serology and Symptom Status of Imported Cases Reported from 28 Jun to 4 Jul

Symptoms	S+	S-	Not Serology Tested	Pending Serology Result	Total No. of Cases
Asymptomatic	19	17	0	2	38
Symptomatic	2	6	0	1	9
Total	21	23	0	3	47

Figure 2.2: Weekly Total Number of Imported Cases, Imported Cases that are S- and Arrivals from 25 Jan 21 to 20 Jun 21 (next update will be on 12 Jul)⁸



⁸ Data from the past 2 weeks are excluded as cases on SHN who arrived in the past 2 weeks may not have their test results yet. "Imported Cases that are S-" comprises imported cases who are (a) serology negative; or (b) not tested for serology.

(3) Number of COVID 19 Cases in Hospitals and Community Care Facilities**Figure 3.1:** Summary of Confirmed Cases by Status in the Past 14 Days

Press Release Date	Currently Admitted in Hospitals		In Care Facilities ⁹	Total Recovered		Total Demised	Total
	ICU	General Wards		Completed Isolation	Discharged from Hospital		
28-Jun	3	132	170	58,570	3,642	36	62,553
29-Jun	3	126	179	58,576	3,643	36	62,563
30-Jun	4	129	182	58,584	3,644	36	62,579
1-Jul	3	124	192	58,589	3,645	36	62,589
2-Jul	2	117	194	58,601	3,649	36	62,599
3-Jul	2	111	192	58,614	3,651	36	62,606
4-Jul	2	101	192	58,629	3,657	36	62,617
5-Jul	3	99	193	58,636	3,663	36	62,630
6-Jul	3	96	192	58,647	3,666	36	62,640
7-Jul	3	87	185	58,669	3,672	36	62,652
8-Jul	2	82	185	58,687	3,676	36	62,668
9-Jul	2	83	183	58,698	3,676	36	62,678
10-Jul	2	74	175	58,717	3,680	36	62,684
11-Jul	2	75	165	58,728	3,686	36	62,692

⁹ Community Care Facilities (i.e. D'Resort, EXPO, Tuas South), Private Hospitals (i.e. Concord International Hospital, Mt Elizabeth Hospital, Gleneagles Hospital, Mt Elizabeth Novena Hospital, Parkway East Hospital), Community Hospitals (i.e. Bright Vision Hospital) and other care facilities.

(4) Number of Stay Home Notice (SHN) Issued

Figure 4.1: Daily Number of SHN issued (19 Feb 2020 to 10 Jul 2021)

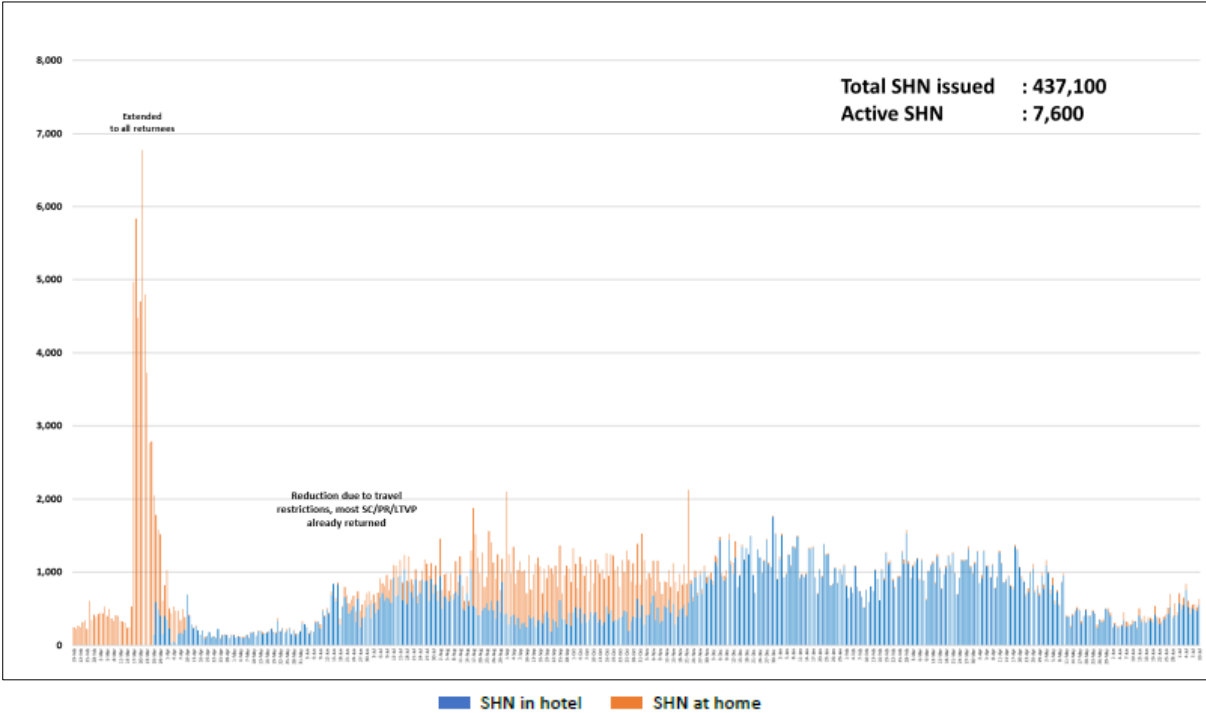
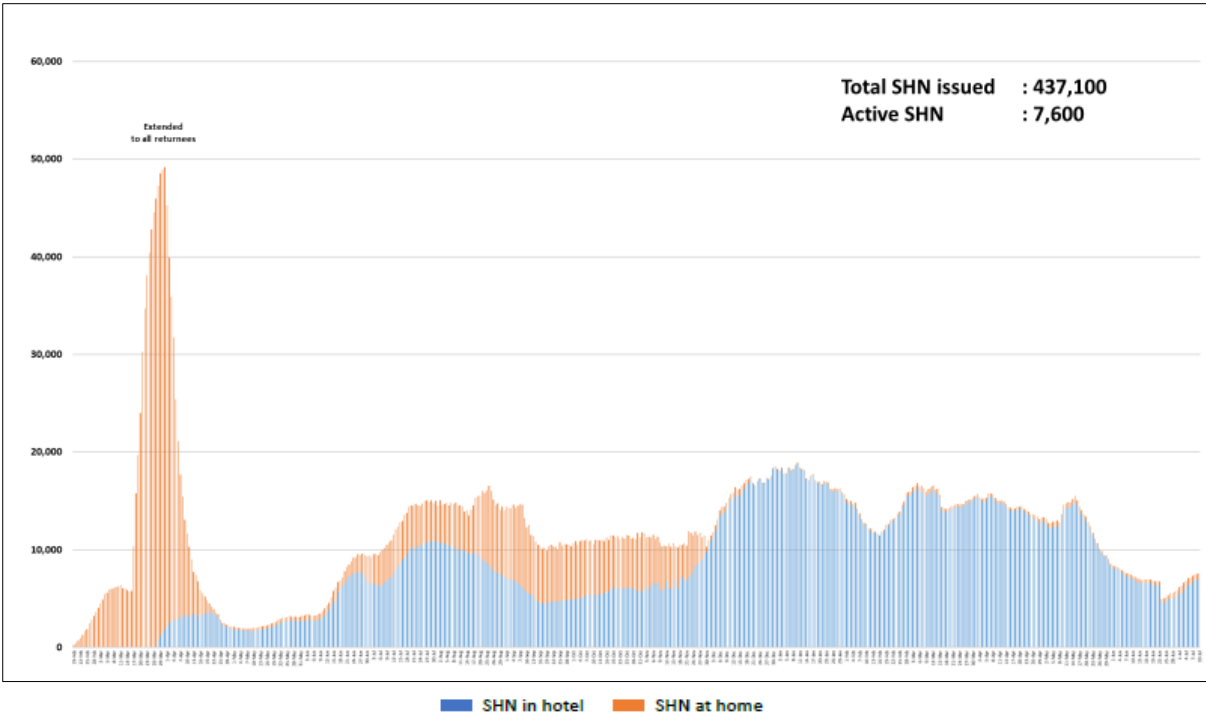


Figure 4.2: Active Stock Number of SHN (Home) and SHN (Hotel) (19 Feb 2020 to 10 Jul 2021)



(5) Number of Quarantine Orders (QO) Generated

Figure 5.1: Daily Number of QOs Generated

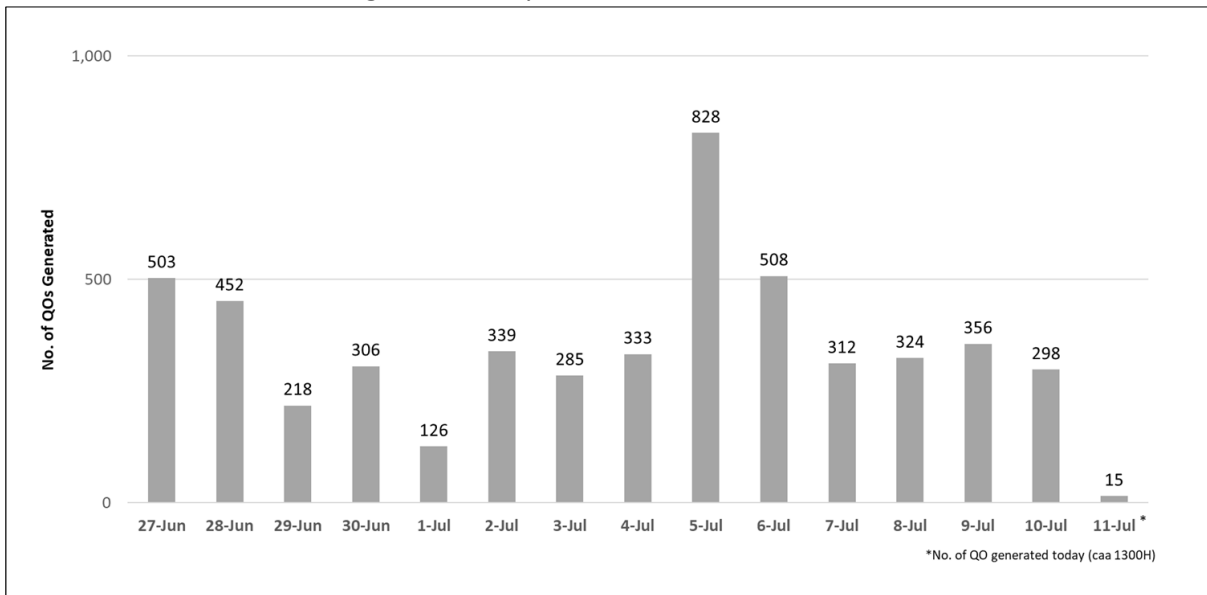


Figure 5.2: Active Number of Persons Under Quarantine (PUQs)

