

25 July 2021 Daily Report on COVID-19**(1) Number of COVID-19 Cases****Figure 1.1:** Breakdown of New Confirmed Cases in the Past 14 Days

Press Release Date	Imported			Non-Imported Cases														All Cases
				Community Cases								Dorm Residents ¹						
	Isolated before Detection	Detected through Surveillance ²	Sub-Total	Isolated before Detection ³				Detected through Surveillance ⁴				Sub-Total	Incidence Rate ⁵ (per 100,000)	Isolated before Detection ³	Detected through Surveillance ⁴	No. of Cases	Incidence Rate ⁵ (per 100,000)	
				SC/PR	G or F	Visitor	Sub-Total	SC/PR	G or F	Visitor	Sub-Total							
Before 12-Jul	4,561	330	4,891	786	395	9	1,190	1,308	764	12	2,084	3,274	-	54,527		54,527	-	62,692
12-Jul	18	0	18	5	0	0	5	2	0	1	3	8	0.15	0	0	0	0	26
13-Jul	7	0	7	4	1	0	5	6	3	5	14	19	0.35	0	0	0	0	26
14-Jul	4	0	4	13	2	2	17	20	13	6	39	56	1	0	0	0	0	60
15-Jul	5	1	6	12	3	2	17	14	7	4	25	42	0.78	0	0	0	0	48
16-Jul	8	1	9	16	7	1	24	16	11	1	28	52	0.97	0	0	0	0	61
17-Jul	8	0	8	21	9	3	33	22	5	0	27	60	1.1	0	0	0	0	68
18-Jul	4	0	4	20	9	0	29	38	16	4	58	87	1.6	1	0	1	0.31	92
19-Jul	7	2	9	28	16	0	44	88	30	1	119	163	3	0	0	0	0	172
20-Jul	13	0	13	37	44	0	81	68	32	1	101	182	3.4	0	0	0	0	195
21-Jul	2	0	2	43	37	0	80	83	15	1	99	179	3.3	0	0	0	0	181
22-Jul	8	0	8	41	16	1	58	81	20	1	102	160	3	1	1	2	0.62	170
23-Jul	3	0	3	42	22	0	64	47	17	2	66	130	2.4	0	0	0	0	133
24-Jul	3	0	3	52	17	0	69	45	12	0	57	126	2.3	0	1	1	0.31	130
25-Jul	8	0	8	25	17	1	43	57	14	2	73	116	2.2	0	1	1	0.31	125
Total since start of outbreak	4,659	334	4,993	1,145	595	19	1,759	1,895	959	41	2,895	4,654	-	54,532		54,532	-	64,179
Population at risk												5,381,000				323,000		5,704,000
Prevalence												0.09%				16.88%		1.13%

Notes

¹ Includes PRs and visitors residing in dorms. Breakdown of dorm cases into those detected through surveillance and those isolated before detection is not available before 24 Aug.

² 272 cases were reported before early Apr, and constitute the 1st wave of imported cases.

³ Cases who were already quarantined and tested during quarantine to determine their status.

⁴ Cases who were identified through surveillance testing, such as the bi-weekly Rostered Routine Testing (RRT) of at-risk workers and testing of those with Acute Respiratory Illness (ARI) symptoms.

⁵ Incidence rates are rounded to two significant figures.

Figure 1.2: Epidemic Curve of the COVID-19 Outbreak by Press Release Date

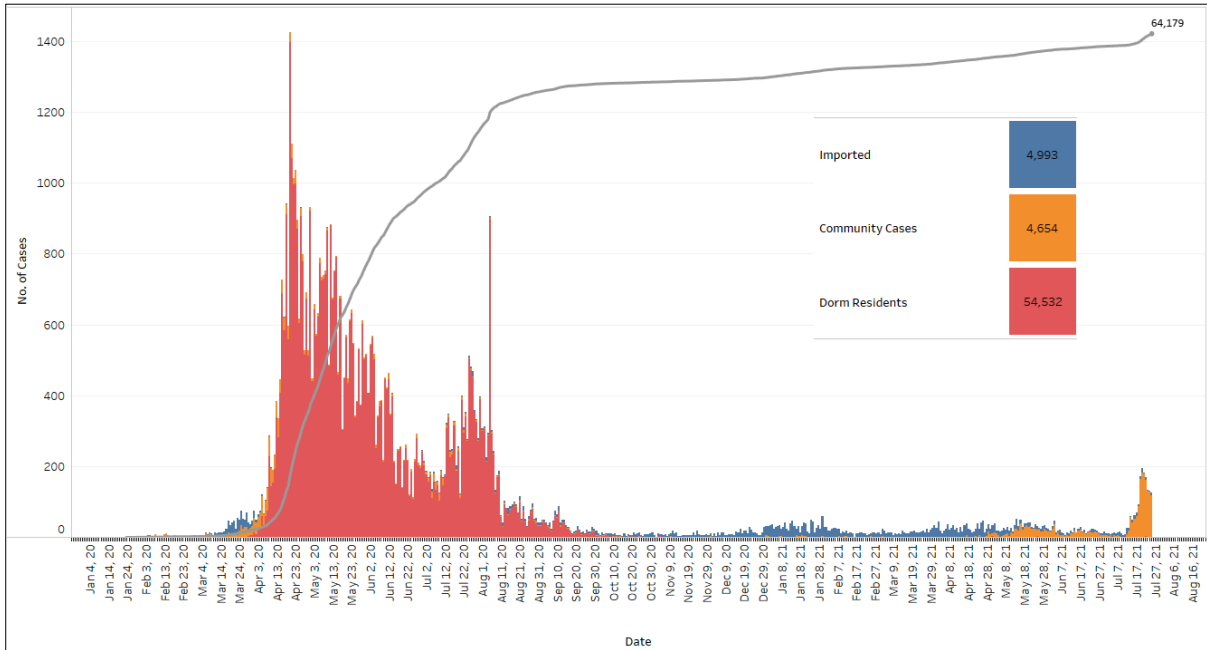


Figure 1.3: Epidemic Split Curve of the COVID-19 Outbreak by Press Release Date

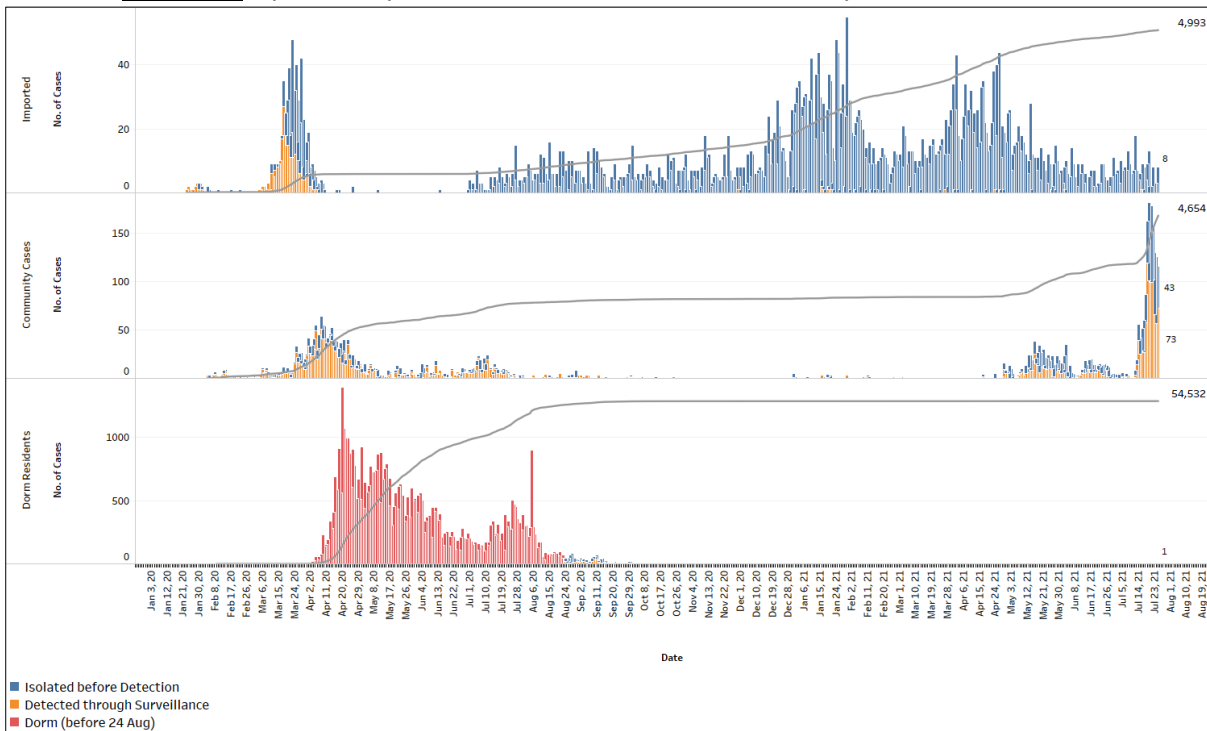


Figure 1.4: Epidemic Curve of COVID-19 Re-infections by Press Release Date

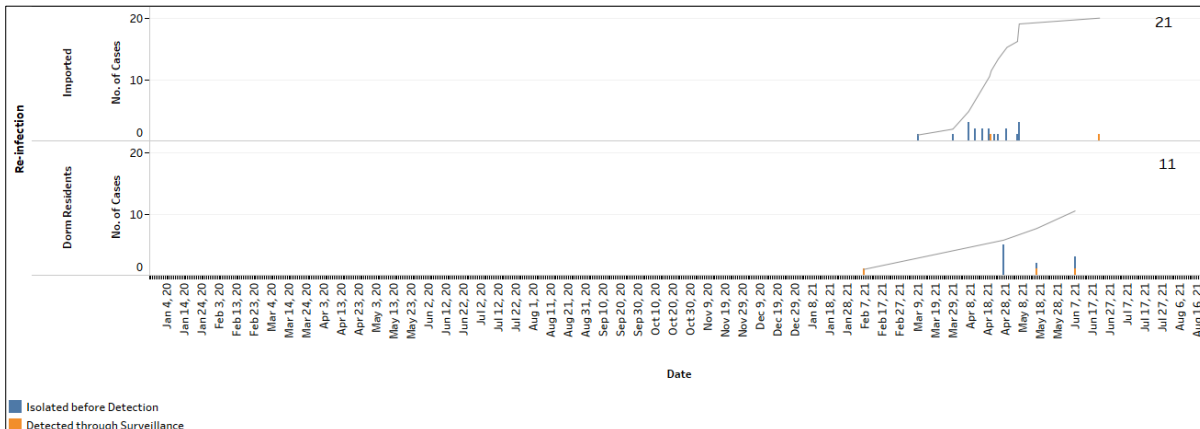


Figure 1.5: Epidemic Curve of Imported Cases by Press Release Date (left panel) and Arrival Date (right panel)

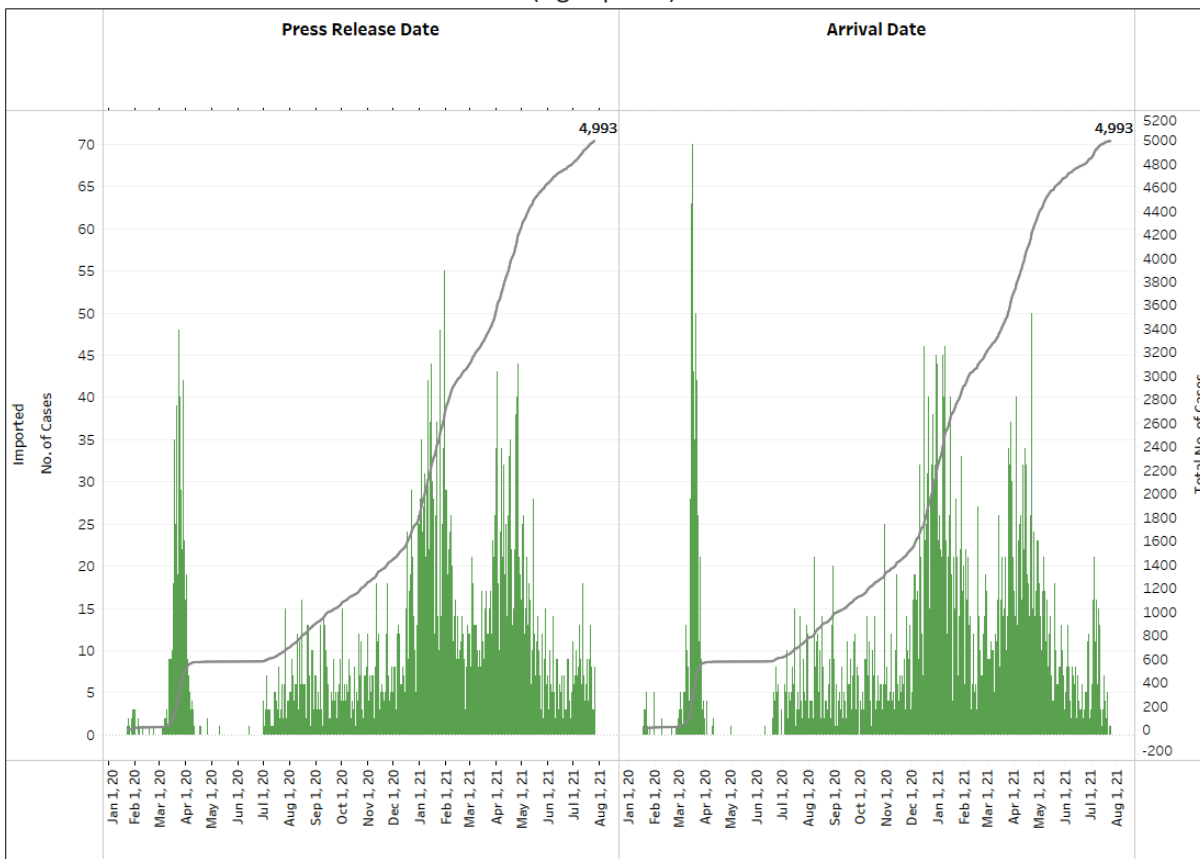


Figure 1.6: Epidemic Curve of Community Cases by Press Release Date (left panel) and by Symptom Onset or Notification Date⁶ (right panel)

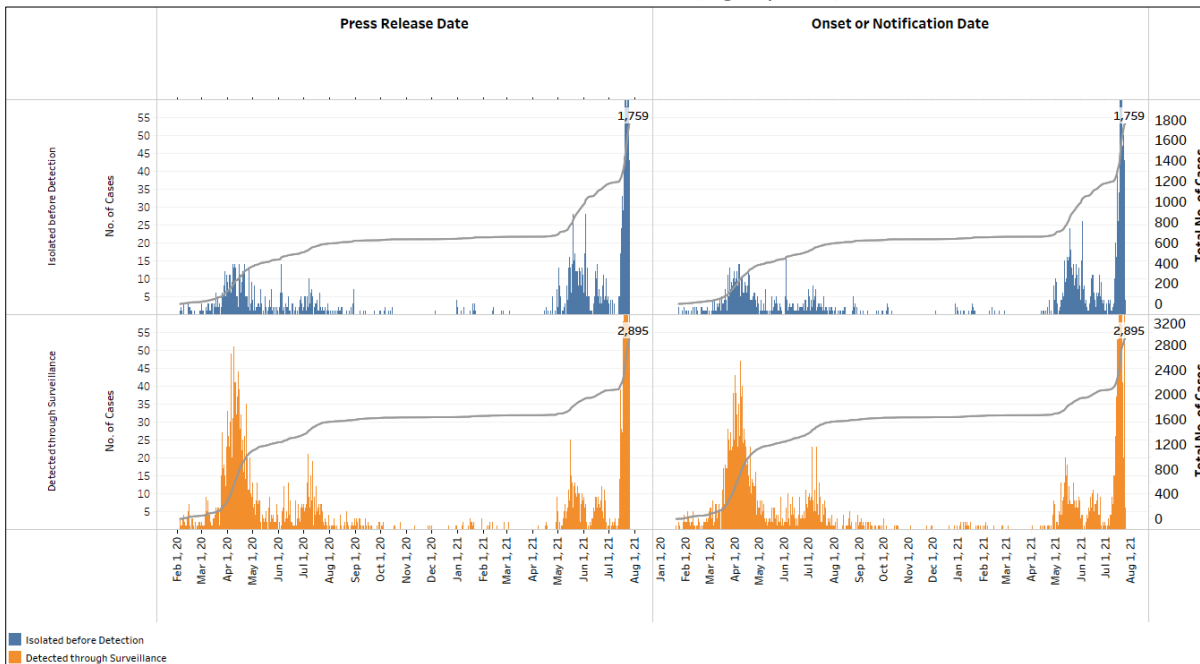
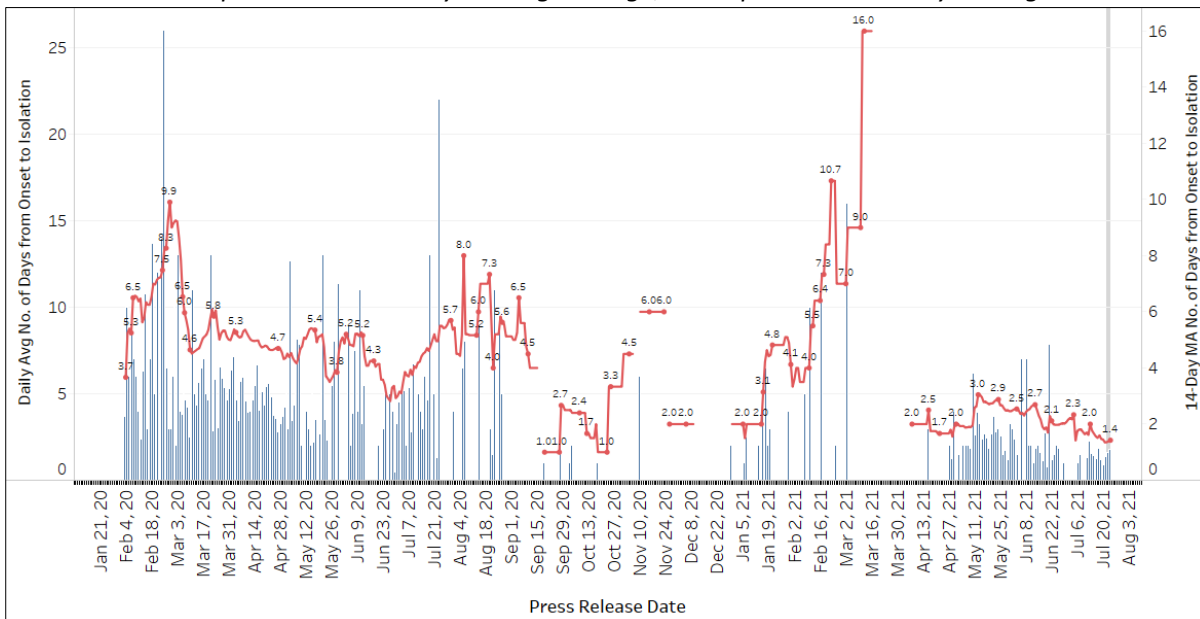


Figure 1.7: Average Number of Days from Onset of Symptoms to Isolation (QO, hospital admission or notification to MOH) for Community Cases Detected through Surveillance in Each Day. Line represents the 14-day moving average; Bar represents the daily average⁷



⁶ Date of notification was used for cases that did not display any symptoms. The numbers with onset in the past few days may see an increase as more cases are notified.

⁷ Area in grey demarcates data points for the past 3 days where some cases may still be pending epidemiological investigation. The bar graph shows the daily average number of days from symptoms onset to isolation, while the line graph shows the moving average for the past 14 days. Both graphs exclude cases with no onset date (asymptomatic) in the computation of the average. Community cases with symptoms who are isolated on the same day that symptoms occurred would have an isolation time of 0. There is a gap in the line graph from 16 to 18 Sep as there are no symptomatic cases in the preceding 14 days.

Figure 1.8: Weekly Reclassifications of Previously Reported Cases (next update will be on 26 Jul)

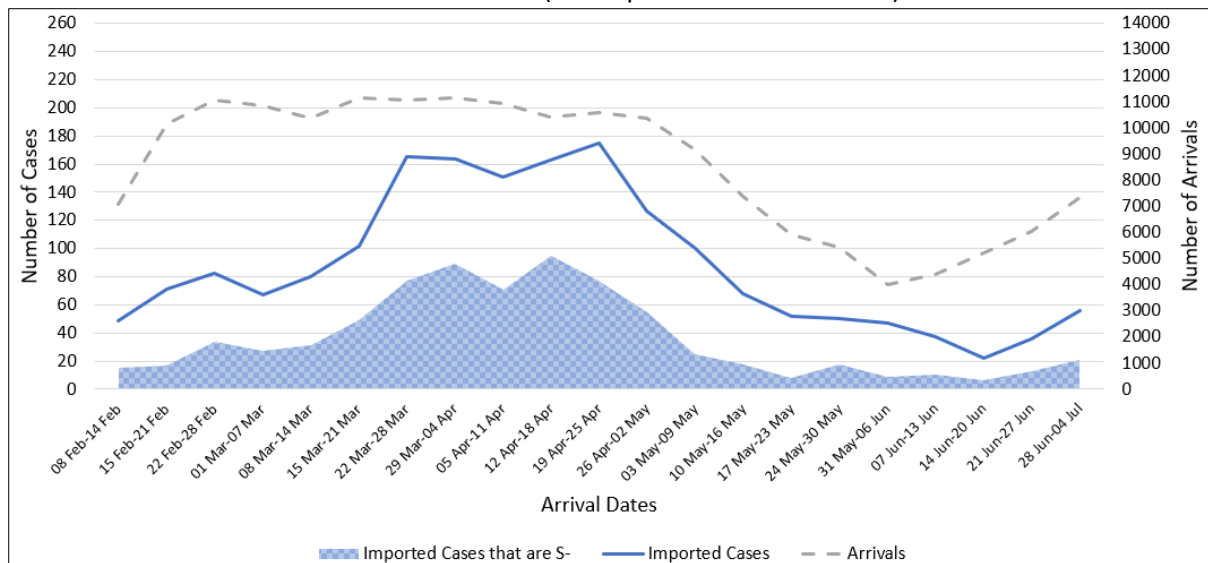
	Imported	Community Linked	Community Unlinked	Dorm Residents	Total
Total number of cases as at 12 Jul	4,909	2,357	925	54,527	62,718
Cases reported 13 Jul - 19 Jul	46	433	47	1	527
Net reclassifications of previously reported cases, incorporated 13 Jul - 19 Jul	0	7	-7	0	0
Total number of cases as at 19 Jul	4,955	2,797	965	54,528	63,245

(2) Imported COVID 19 Cases

Figure 2.1: Serology and Symptom Status of Imported Cases Reported from 12 Jul to 18 Jul

Symptoms	S+	S-	Not Serology Tested	Pending Serology Result	Total No. of Cases
Asymptomatic	22	19	0	1	42
Symptomatic	2	12	0	0	14
Total	24	31	0	1	56

Figure 2.2: Weekly Total Number of Imported Cases, Imported Cases that are S- and Arrivals from 29 Mar 21 to 4 Jul 21⁸ (next update will be on 26 Jul)



⁸ Data from the past 2 weeks are excluded as cases on SHN who arrived in the past 2 weeks may not have their test results yet. "Imported Cases that are S-" comprises imported cases who are (a) serology negative; or (b) not tested for serology.

(3) Number of COVID 19 Cases in Hospitals and Community Care Facilities**Figure 3.1:** Summary of Confirmed Cases by Status in the Past 14 Days

Press Release Date	Currently Admitted in Hospitals		In Care Facilities ⁹	Total Recovered		Total Demised	Total
	ICU	General Wards		Completed Isolation	Discharged from Hospital		
12-Jul	2	78	170	58,744	3,688	36	62,718
13-Jul	2	92	161	58,761	3,692	36	62,744
14-Jul	1	124	176	58,773	3,694	36	62,804
15-Jul	1	179	155	58,783	3,698	36	62,852
16-Jul	1	183	195	58,794	3,704	36	62,913
17-Jul	1	195	237	58,805	3,707	36	62,981
18-Jul	1	242	268	58,813	3,713	36	63,073
19-Jul	1	288	388	58,816	3,716	36	63,245
20-Jul	1	331	529	58,826	3,717	36	63,440
21-Jul	1	378	646	58,837	3,723	36	63,621
22-Jul	1	414	764	58,852	3,724	36	63,791
23-Jul	2	445	854	58,860	3,727	36	63,924
24-Jul	1	489	932	58,867	3,728	37	64,054
25-Jul	2	522	1,013	58,874	3,731	37	64,179

⁹ Community Care Facilities (i.e. D'Resort, EXPO, Tuas South), Private Hospitals (i.e. Concord International Hospital, Mt Elizabeth Hospital, Gleneagles Hospital, Mt Elizabeth Novena Hospital, Parkway East Hospital), Community Hospitals (i.e. Bright Vision Hospital) and other care facilities.

(4) Number of Stay Home Notice (SHN) Issued

Figure 4.1: Daily Number of SHN issued (19 Feb 2020 to 24 Jul 2021)

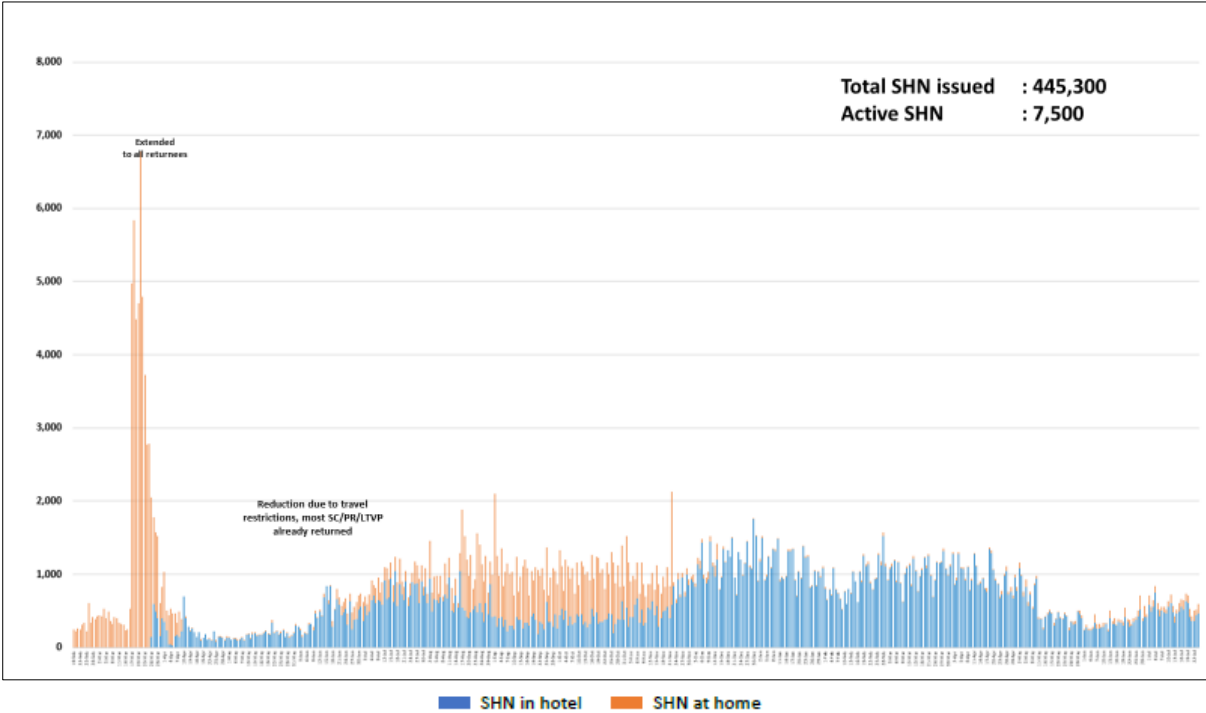
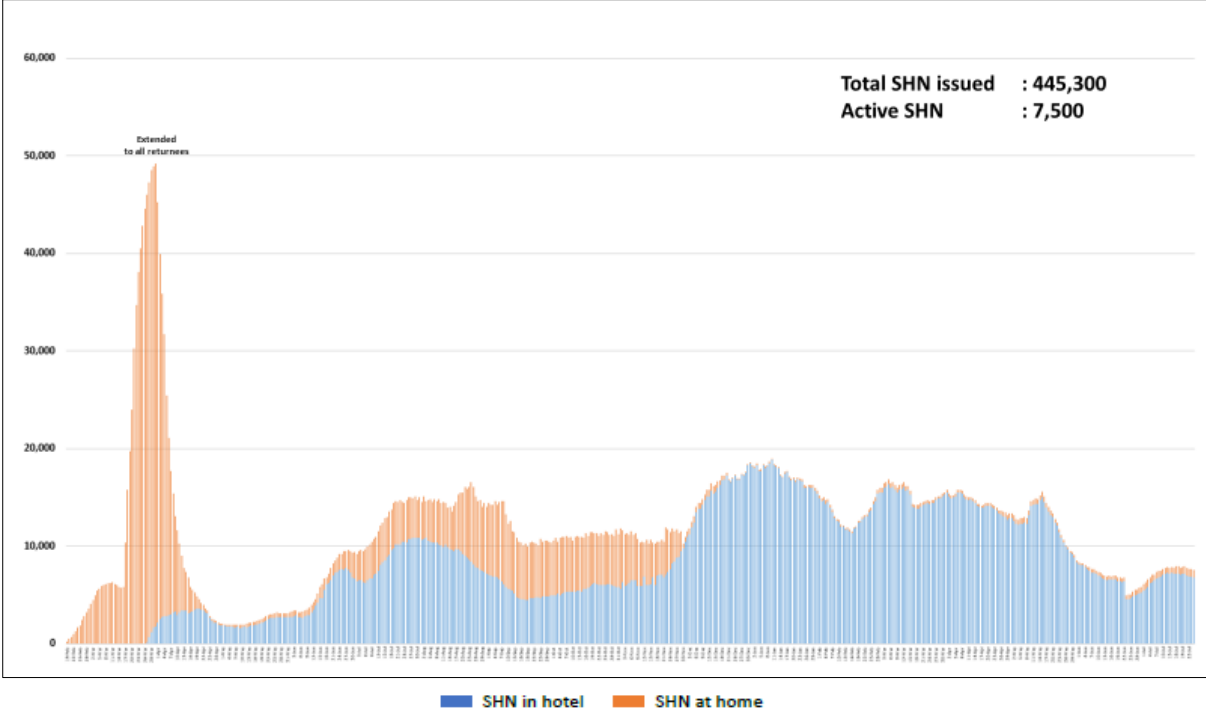


Figure 4.2: Active Stock Number of SHN (Home) and SHN (Hotel) (19 Feb 2020 to 24 Jul 2021)



(5) Number of Quarantine Orders (QO) Generated

Figure 5.1: Daily Number of QOs Generated

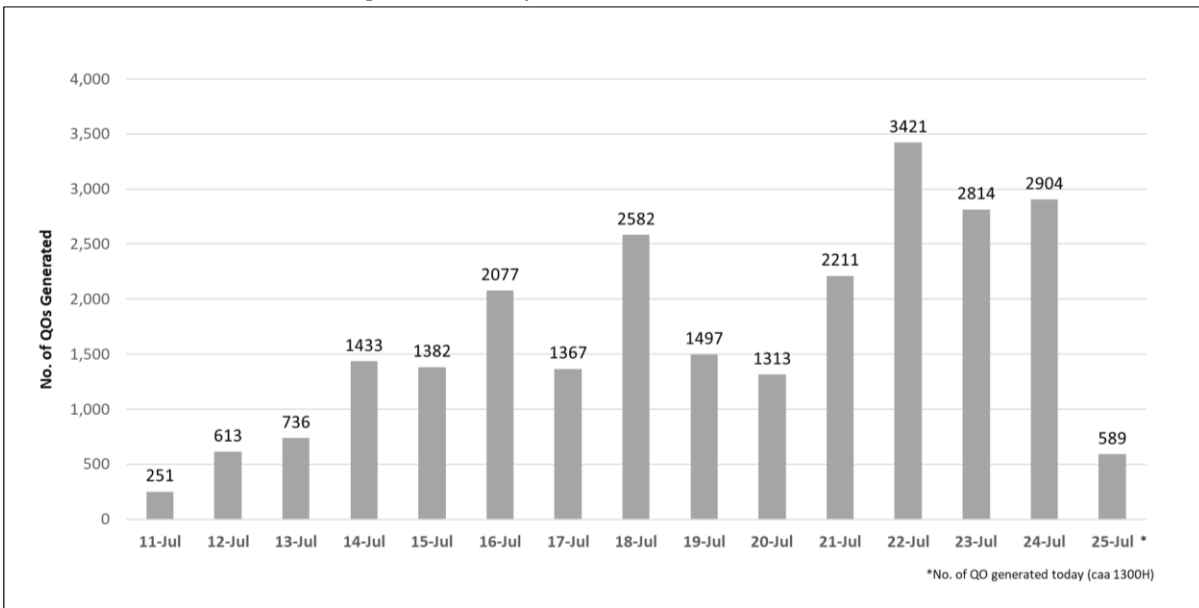


Figure 5.2: Active Number of Persons Under Quarantine (PUQs)

