

**2 August 2021 Daily Report on COVID-19****(1) Number of COVID-19 Cases****Figure 1.1:** Breakdown of New Confirmed Cases in the Past 14 Days

Press Release Date	Imported			Non-Imported Cases														All Cases
	Isolated before Detection	Detected through Surveillance <sup>2</sup>	Sub-Total	Community Cases								Dorm Residents <sup>1</sup>						
				Isolated before Detection <sup>3</sup>				Detected through Surveillance <sup>4</sup>				Sub-Total	Incidence Rate <sup>5</sup> (per 100,000)	Isolated before Detection <sup>3</sup>	Detected through Surveillance <sup>4</sup>	No. of Cases	Incidence Rate <sup>5</sup> (per 100,000)	
SC/PR	G or F	Visitor	Sub-Total	SC/PR	G or F	Visitor	Sub-Total	Sub-Total	Incidence Rate <sup>5</sup> (per 100,000)	Isolated before Detection <sup>3</sup>	Detected through Surveillance <sup>4</sup>							No. of Cases
Before 20-Jul	4,622	333	4,955	905	442	17	1,364	1,514	850	34	2,398	3,762	-	54,528		54,528	-	63,245
20-Jul	13	0	13	37	44	0	81	68	32	1	101	182	3.4	0	0	0	0	195
21-Jul	2	0	2	43	37	0	80	83	15	1	99	179	3.3	0	0	0	0	181
22-Jul	8	0	8	41	16	1	58	81	20	1	102	160	3	1	1	2	0.62	170
23-Jul	3	0	3	42	22	0	64	47	17	2	66	130	2.4	0	0	0	0	133
24-Jul	3	0	3	52	17	0	69	45	12	0	57	126	2.3	0	1	1	0.31	130
25-Jul	8	0	8	25	17	1	43	57	14	2	73	116	2.2	0	1	1	0.31	125
26-Jul	6	0	6	56	18	1	75	39	14	0	53	128	2.4	1	0	1	0.31	135
27-Jul	3	0	3	37	13	1	51	70	7	0	77	128	2.4	8	0	8	2.5	139
28-Jul	6	0	6	44	15	0	59	47	20	1	68	127	2.4	2	1	3	0.93	136
29-Jul	4	0	4	47	19	0	66	42	16	2	60	126	2.3	2	1	3	0.93	133
30-Jul	8	0	8	45	18	0	63	45	19	0	64	127	2.4	1	3	4	1.2	139
31-Jul	3	0	3	54	13	0	67	33	16	0	49	116	2.2	0	1	1	0.31	120
1-Aug	8	0	8	49	17	0	66	31	12	0	43	109	2	4	0	4	1.2	121
2-Aug	5	0	5	51	11	0	62	32	8	0	40	102	1.9	3	1	4	1.2	111
Total since start of outbreak	4,702	333	5,035	1,528	719	21	2,268	2,234	1,072	44	3,350	5,618	-	54,560		54,560	-	65,213
Population at risk												5,381,000				323,000		5,704,000
Prevalence												0.10%				16.89%		1.14%

**Notes**

<sup>1</sup> Includes PRs and visitors residing in dorms. Breakdown of dorm cases into those detected through surveillance and those isolated before detection is not available before 24 Aug.

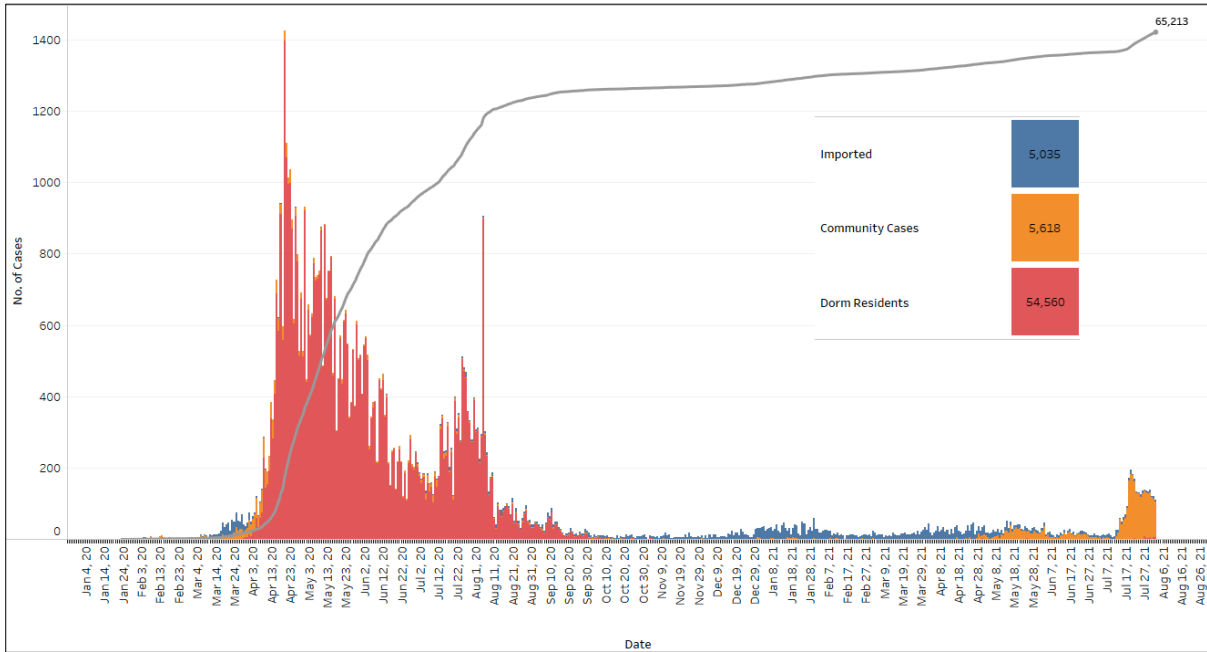
<sup>2</sup> 272 cases were reported before early Apr, and constitute the 1<sup>st</sup> wave of imported cases.

<sup>3</sup> Cases who were already quarantined and tested during quarantine to determine their status.

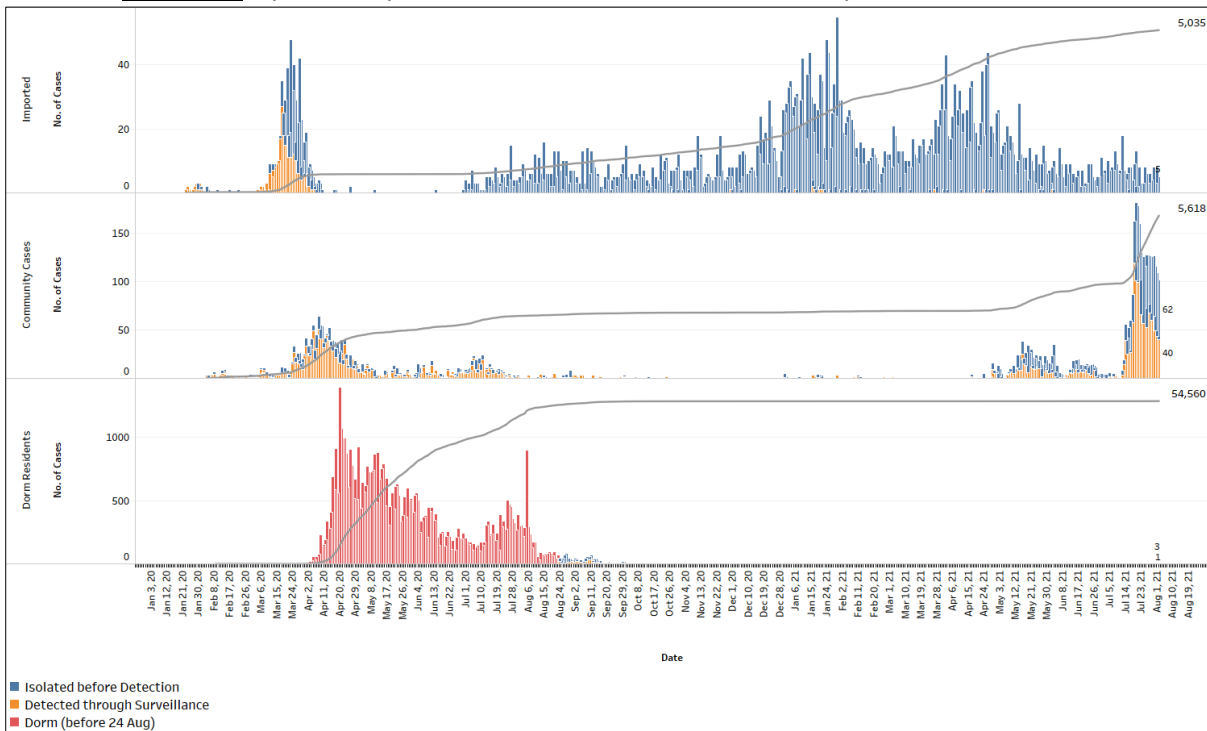
<sup>4</sup> Cases who were identified through surveillance testing, such as the bi-weekly Rostered Routine Testing (RRT) of at-risk workers and testing of those with Acute Respiratory Illness (ARI) symptoms.

<sup>5</sup> Incidence rates are rounded to two significant figures.

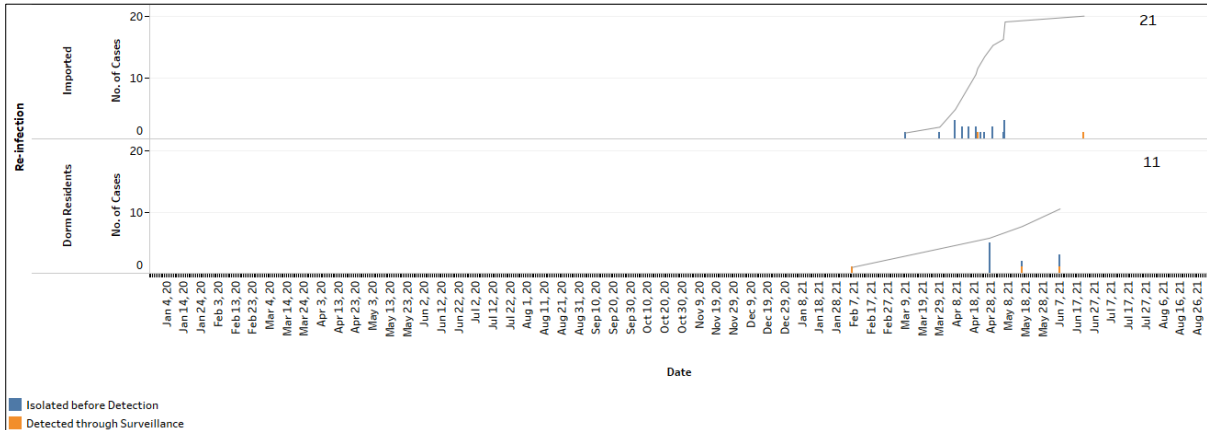
**Figure 1.2:** Epidemic Curve of the COVID-19 Outbreak by Press Release Date



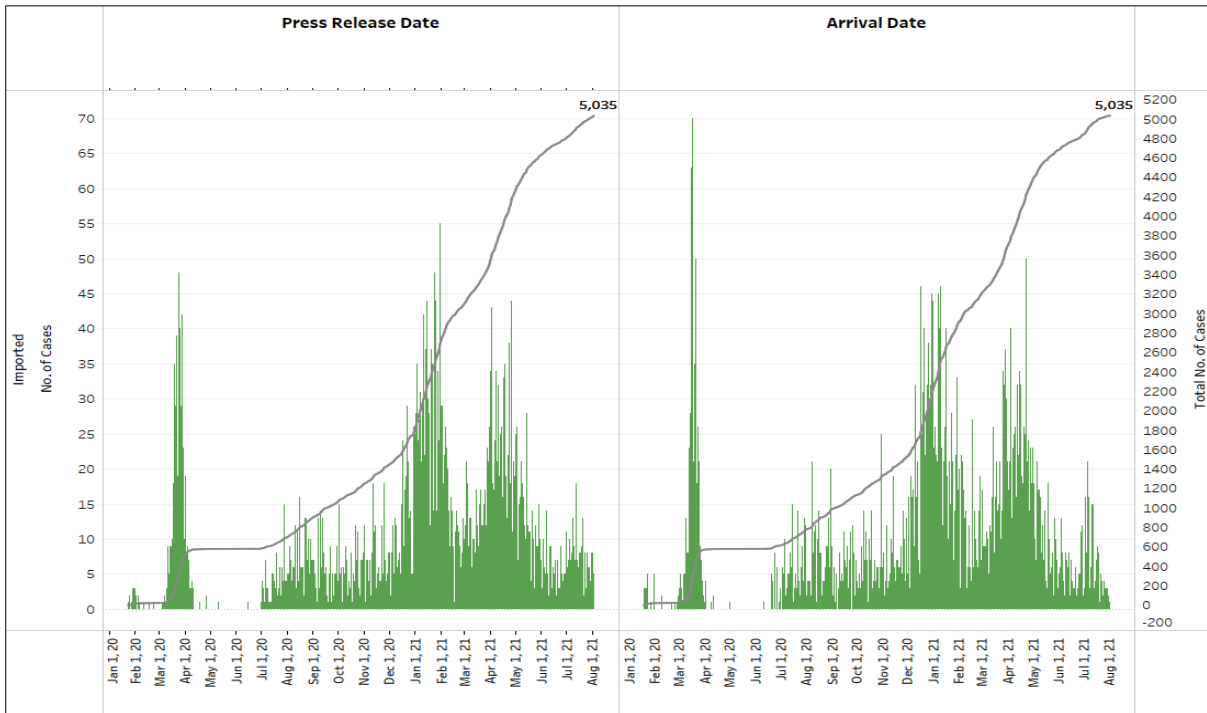
**Figure 1.3:** Epidemic Split Curve of the COVID-19 Outbreak by Press Release Date



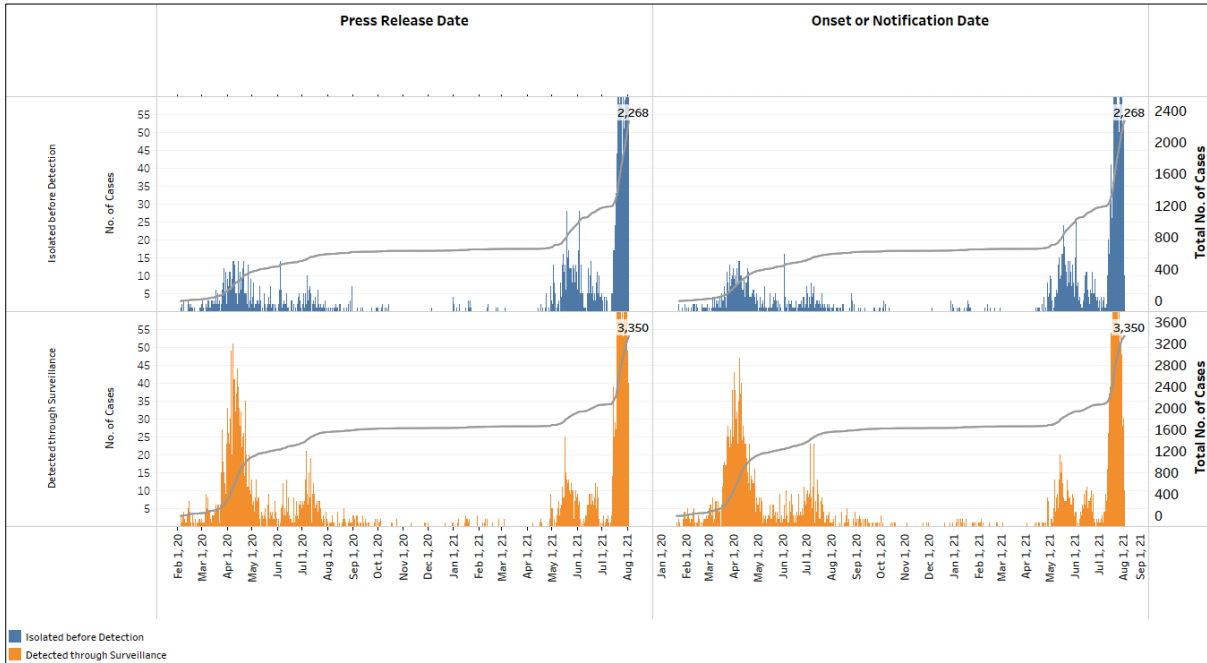
**Figure 1.4:** Epidemic Curve of COVID-19 Re-infections by Press Release Date



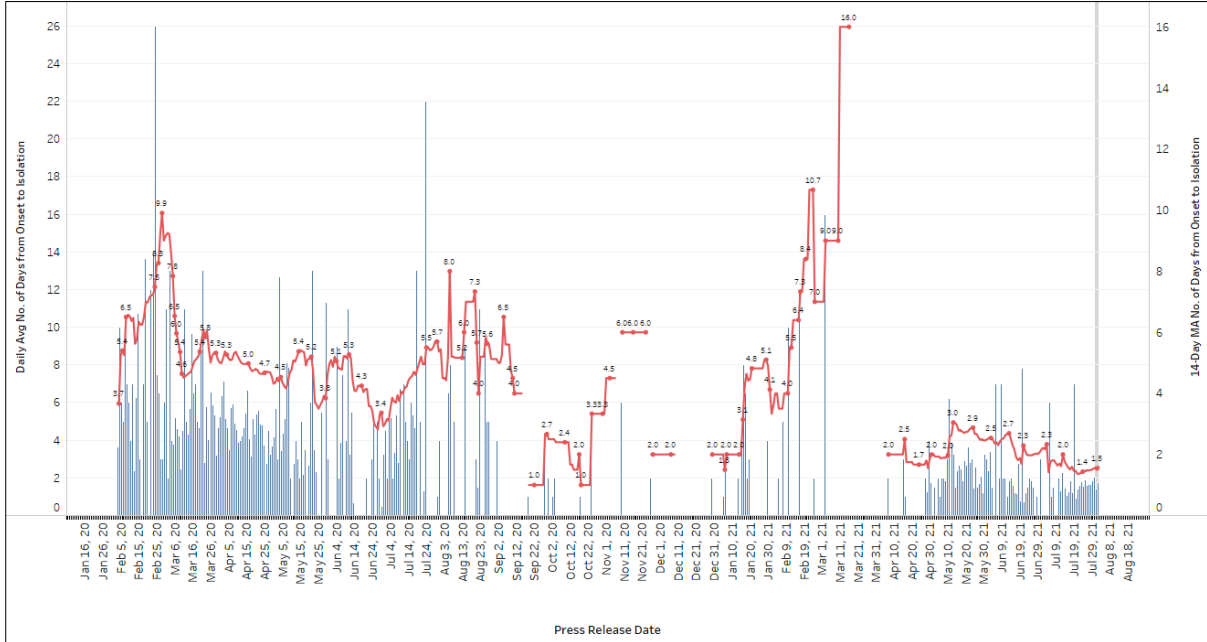
**Figure 1.5:** Epidemic Curve of Imported Cases by Press Release Date (left panel) and Arrival Date (right panel)



**Figure 1.6:** Epidemic Curve of Community Cases by Press Release Date (left panel) and by Symptom Onset or Notification Date<sup>6</sup> (right panel)



**Figure 1.7:** Average Number of Days from Onset of Symptoms to Isolation (QO, hospital admission or notification to MOH) for Community Cases Detected through Surveillance in Each Day. Line represents the 14-day moving average; Bar represents the daily average<sup>7</sup>



<sup>6</sup> Date of notification was used for cases that did not display any symptoms. The numbers with onset in the past few days may see an increase as more cases are notified.

<sup>7</sup> Area in grey demarcates data points for the past 3 days where some cases may still be pending epidemiological investigation. The bar graph shows the daily average number of days from symptoms onset to isolation, while the line graph shows the moving average for the past 14 days. Both graphs exclude cases with no onset date (asymptomatic) in the computation of the average. Community cases with symptoms who are isolated on the same day that symptoms occurred would have an isolation time of 0. There is a gap in the line graph from 16 to 18 Sep as there are no symptomatic cases in the preceding 14 days.

**Figure 1.8:** Weekly Reclassifications of Previously Reported Cases

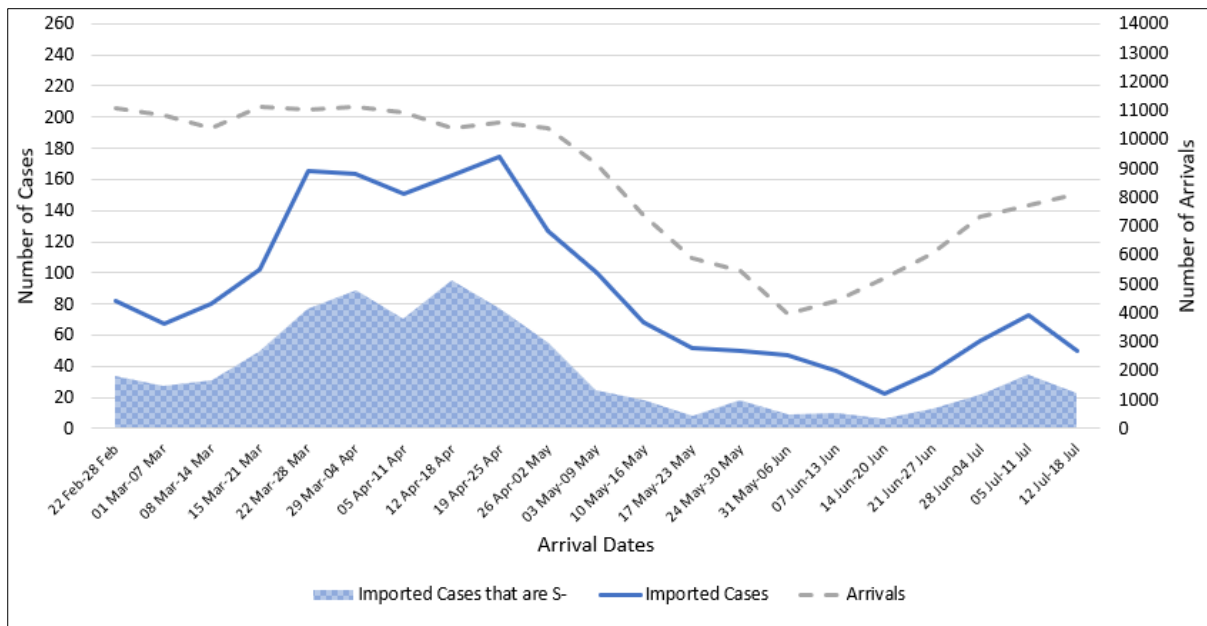
	<b>Imported</b>	<b>Community Linked</b>	<b>Community Unlinked</b>	<b>Dorm Residents</b>	<b>Total</b>
<b>Total number of cases as at 26 Jul</b>	4,999	3,689	1,093	54,533	<b>64,314</b>
<b>Cases reported 27 Jul - 02 Aug</b>	37	541	294	27	<b>899</b>
<b>Net reclassifications of previously reported cases, incorporated 27 Jul - 02 Aug</b>	-1	36	-35	0	<b>0</b>
<b>Total number of cases as at 02 Aug</b>	5,035	4,266	1,352	54,560	<b>65,213</b>

**(2) Imported COVID 19 Cases**

**Figure 2.1:** Serology and Symptom Status of Imported Cases Reported from 20 Jul to 26 Jul

Symptoms	S+	S-	Not Serology Tested	Pending Serology Result	Total No. of Cases
Asymptomatic	27	5	0	2	<b>34</b>
Symptomatic	2	6	0	1	<b>9</b>
<b>Total</b>	<b>29</b>	<b>11</b>	<b>0</b>	<b>3</b>	<b>43</b>

**Figure 2.2:** Weekly Total Number of Imported Cases, Imported Cases that are S- and Arrivals from 22 Feb 21 to 18 Jul 21<sup>8</sup>



<sup>8</sup> Data from the past 2 weeks are excluded as cases on SHN who arrived in the past 2 weeks may not have their test results yet. "Imported Cases that are S-" comprises imported cases who are (a) serology negative; or (b) not tested for serology.

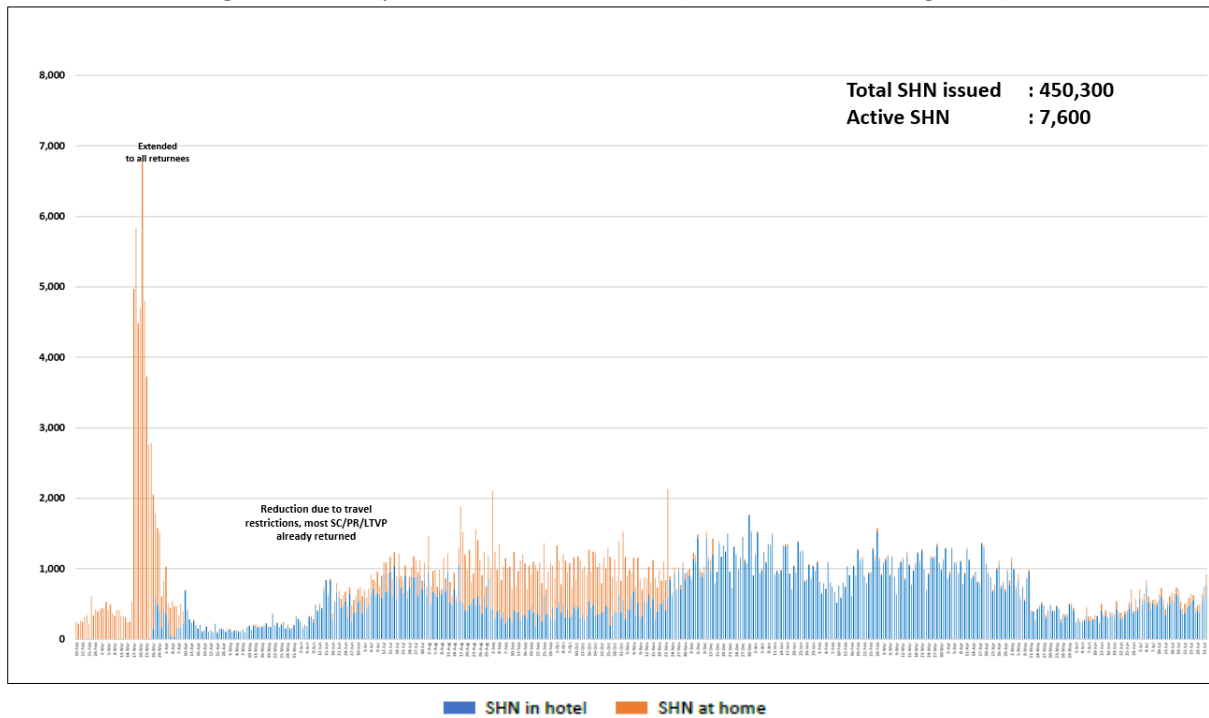
**(3) Number of COVID 19 Cases in Hospitals and Community Care Facilities****Figure 3.1:** Summary of Confirmed Cases by Status in the Past 14 Days

Press Release Date	Currently Admitted in Hospitals		In Care Facilities <sup>9</sup>	Total Recovered		Total Demised	Total
	ICU	General Wards		Completed Isolation	Discharged from Hospital		
20-Jul	1	331	529	58,826	3,717	36	<b>63,440</b>
21-Jul	1	378	646	58,837	3,723	36	<b>63,621</b>
22-Jul	1	414	764	58,852	3,724	36	<b>63,791</b>
23-Jul	2	445	854	58,860	3,727	36	<b>63,924</b>
24-Jul	1	489	932	58,867	3,728	37	<b>64,054</b>
25-Jul	2	522	1,013	58,874	3,731	37	<b>64,179</b>
26-Jul	2	549	1,109	58,884	3,733	37	<b>64,314</b>
27-Jul	2	543	1,234	58,899	3,738	37	<b>64,453</b>
28-Jul	2	565	1,322	58,916	3,747	37	<b>64,589</b>
29-Jul	3	569	1,434	58,926	3,753	37	<b>64,722</b>
30-Jul	7	564	1,520	58,972	3,761	37	<b>64,861</b>
31-Jul	7	597	1,477	59,096	3,767	37	<b>64,981</b>
1-Aug	8	582	1,518	59,162	3,795	37	<b>65,102</b>
2-Aug	7	595	1,540	59,226	3,807	38	<b>65,213</b>

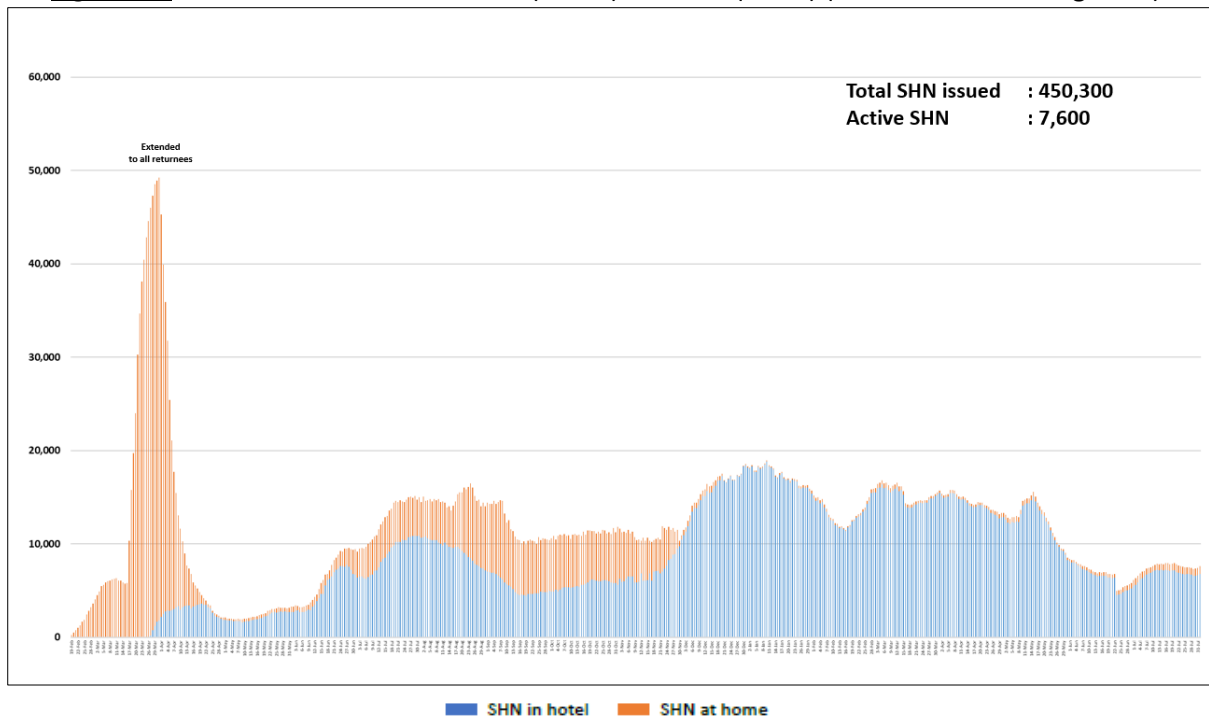
<sup>9</sup> Community Care Facilities (i.e. D'Resort, Tuas South, AMK ITE, Village Hotel Sentosa, CSC Loyang), Community Hospitals (i.e. Bright Vision Hospital) and other care facilities.

**(4) Number of Stay Home Notice (SHN) Issued**

**Figure 4.1:** Daily Number of SHN issued (19 Feb 2020 to 1 Aug 2021)



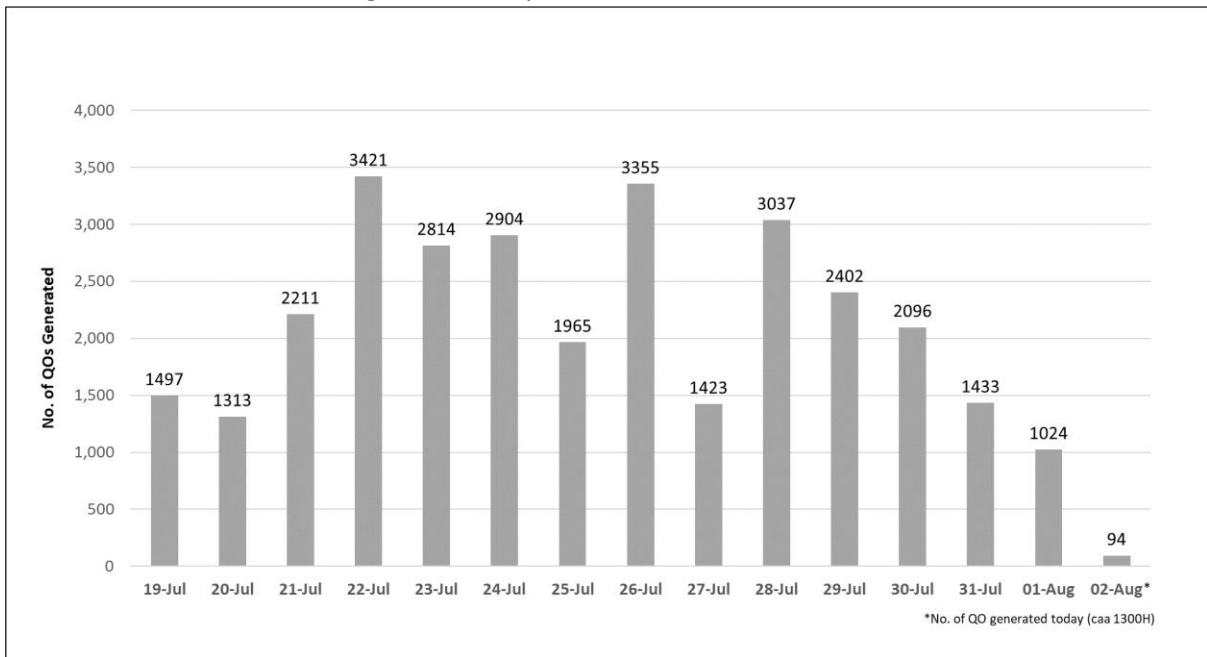
**Figure 4.2:** Active Stock Number of SHN (Home) and SHN (Hotel) (19 Feb 2020 to 1 Aug 2021)





**(5) Number of Quarantine Orders (QO) Generated**

**Figure 5.1: Daily Number of QOs Generated**



**Figure 5.2: Active Number of Persons Under Quarantine (PUQs)**

