

6 August 2021 Daily Report on COVID-19**(1) Number of COVID-19 Cases****Figure 1.1:** Breakdown of New Confirmed Cases in the Past 14 Days

Press Release Date	Imported			Non-Imported Cases														All Cases
				Community Cases								Dorm Residents ¹						
	Isolated before Detection	Detected through Surveillance ²	Sub-Total	Isolated before Detection ³				Detected through Surveillance ⁴				Sub-Total	Incidence Rate ⁵ (per 100,000)	Isolated before Detection ³	Detected through Surveillance ⁴	No. of Cases	Incidence Rate ⁵ (per 100,000)	
				SC/PR	G or F	Visitor	Sub-Total	SC/PR	G or F	Visitor	Sub-Total							
Before 24-Jul	4,648	333	4,981	1,068	561	18	1,647	1,793	934	39	2,766	4,413	-	54,530		54,530	-	63,924
24-Jul	3	0	3	52	17	0	69	45	12	0	57	126	2.3	0	1	1	0.31	130
25-Jul	8	0	8	25	17	1	43	57	14	2	73	116	2.2	0	1	1	0.31	125
26-Jul	6	0	6	56	18	1	75	39	14	0	53	128	2.4	1	0	1	0.31	135
27-Jul	3	0	3	37	13	1	51	70	7	0	77	128	2.4	8	0	8	2.5	139
28-Jul	6	0	6	44	15	0	59	47	20	1	68	127	2.4	2	1	3	0.93	136
29-Jul	4	0	4	47	19	0	66	42	16	2	60	126	2.3	2	1	3	0.93	133
30-Jul	8	0	8	45	18	0	63	45	19	0	64	127	2.4	1	3	4	1.2	139
31-Jul	3	0	3	54	13	0	67	33	16	0	49	116	2.2	0	1	1	0.31	120
1-Aug	8	0	8	49	17	0	66	31	12	0	43	109	2	4	0	4	1.2	121
2-Aug	5	0	5	51	11	0	62	32	8	0	40	102	1.9	3	1	4	1.2	111
3-Aug	4	0	4	35	10	0	45	31	16	0	47	92	1.7	1	5	6	1.9	102
4-Aug	3	0	3	43	6	0	49	23	12	2	37	86	1.6	5	1	6	1.9	95
5-Aug	2	0	2	25	12	0	37	41	12	1	54	91	1.7	1	4	5	1.5	98
6-Aug	4	0	4	29	14	0	43	20	11	1	32	75	1.4	13	5	18	5.6	97
Total since start of outbreak	4,715	333	5,048	1,660	761	21	2,442	2,349	1,123	48	3,520	5,962	-	54,595		54,595	-	65,605
Population at risk												5,381,000				323,000		5,704,000
Prevalence												0.11%				16.90%		1.15%

Notes

¹ Includes PRs and visitors residing in dorms. Breakdown of dorm cases into those detected through surveillance and those isolated before detection is not available before 24 Aug.

² 272 cases were reported before early Apr, and constitute the 1st wave of imported cases.

³ Cases who were already quarantined and tested during quarantine to determine their status.

⁴ Cases who were identified through surveillance testing, such as the bi-weekly Rostered Routine Testing (RRT) of at-risk workers and testing of those with Acute Respiratory Illness (ARI) symptoms.

⁵ Incidence rates are rounded to two significant figures.

Figure 1.2: Epidemic Curve of the COVID-19 Outbreak by Press Release Date

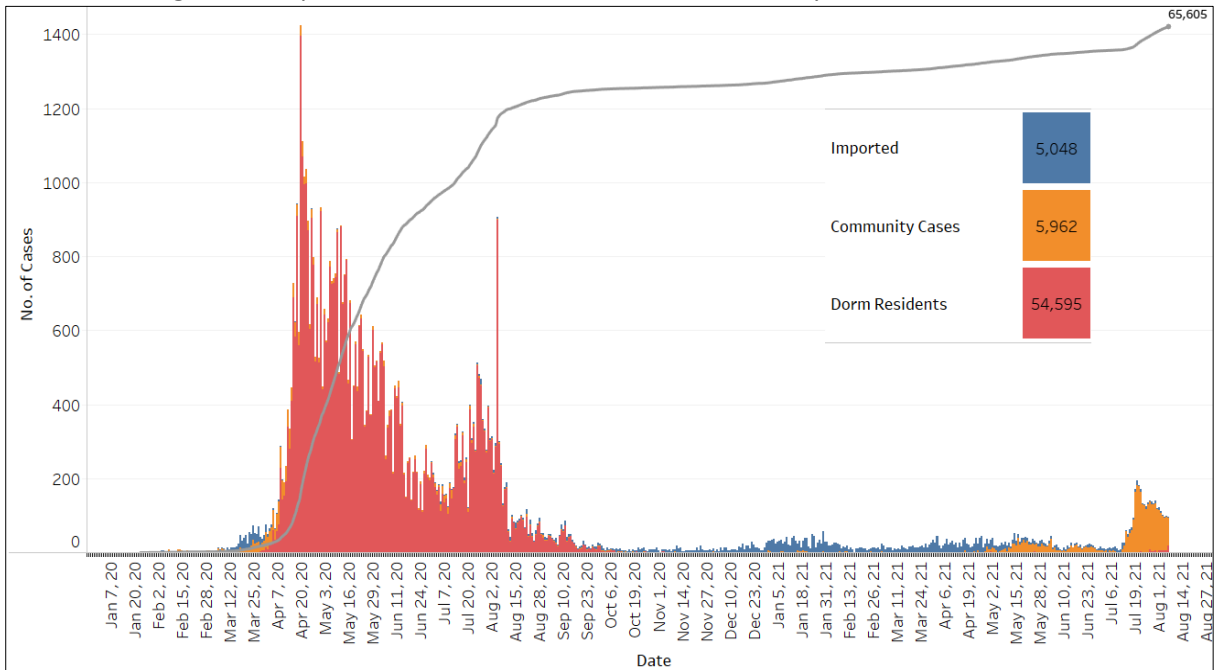


Figure 1.3: Epidemic Split Curve of the COVID-19 Outbreak by Press Release Date

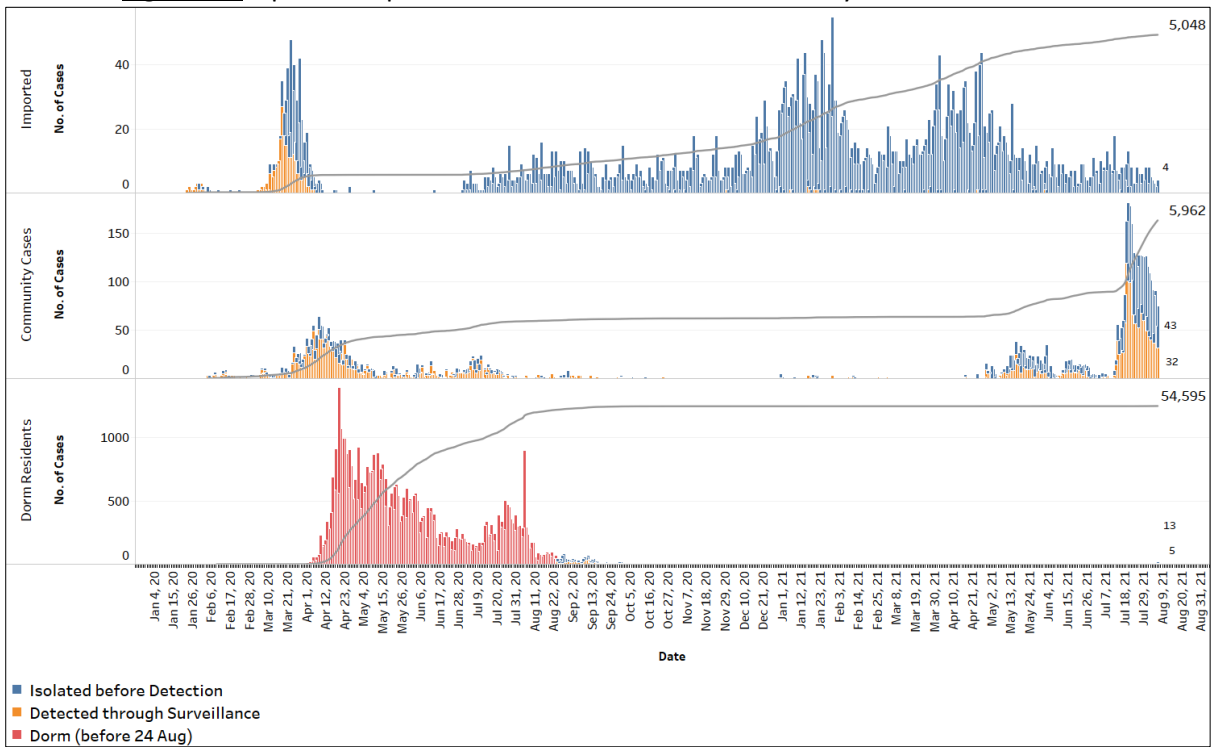


Figure 1.4: Epidemic Curve of COVID-19 Re-infections by Press Release Date

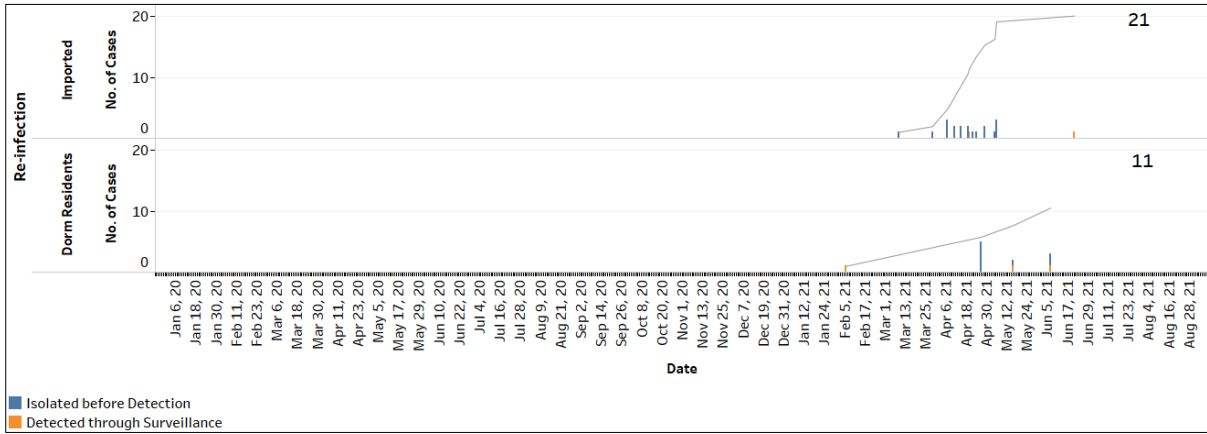


Figure 1.5: Epidemic Curve of Imported Cases by Press Release Date (left panel) and Arrival Date (right panel)

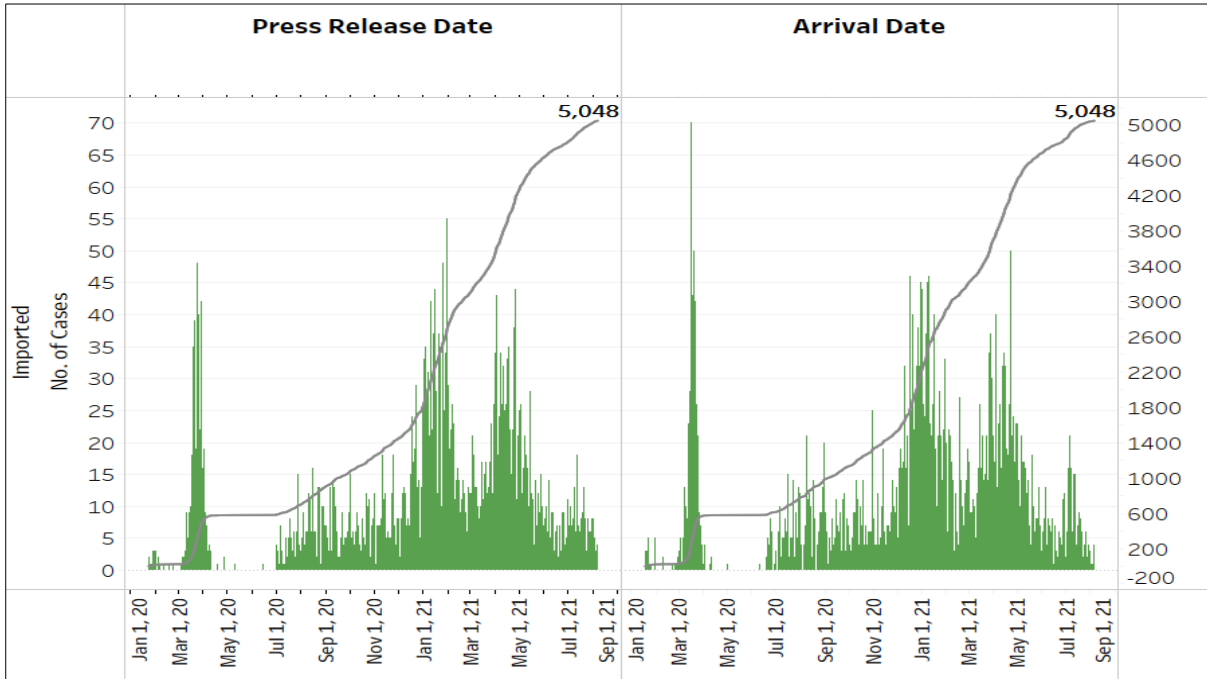


Figure 1.6: Epidemic Curve of Community Cases by Press Release Date (left panel) and by Symptom Onset or Notification Date⁶ (right panel)

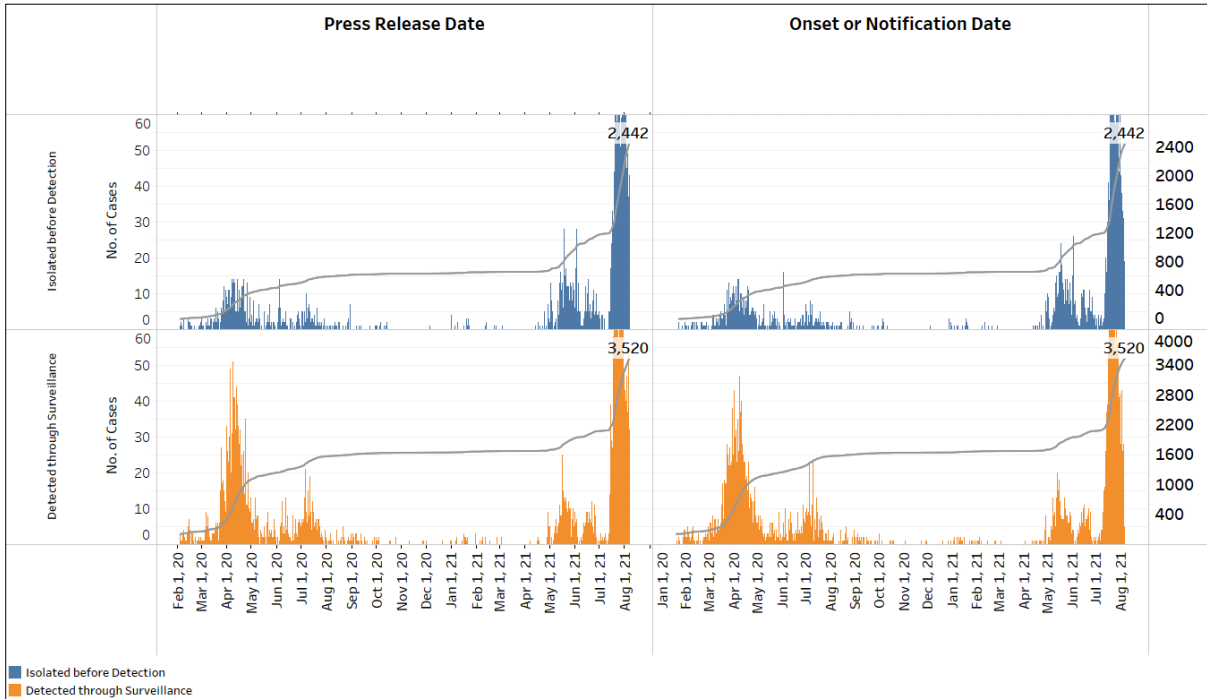
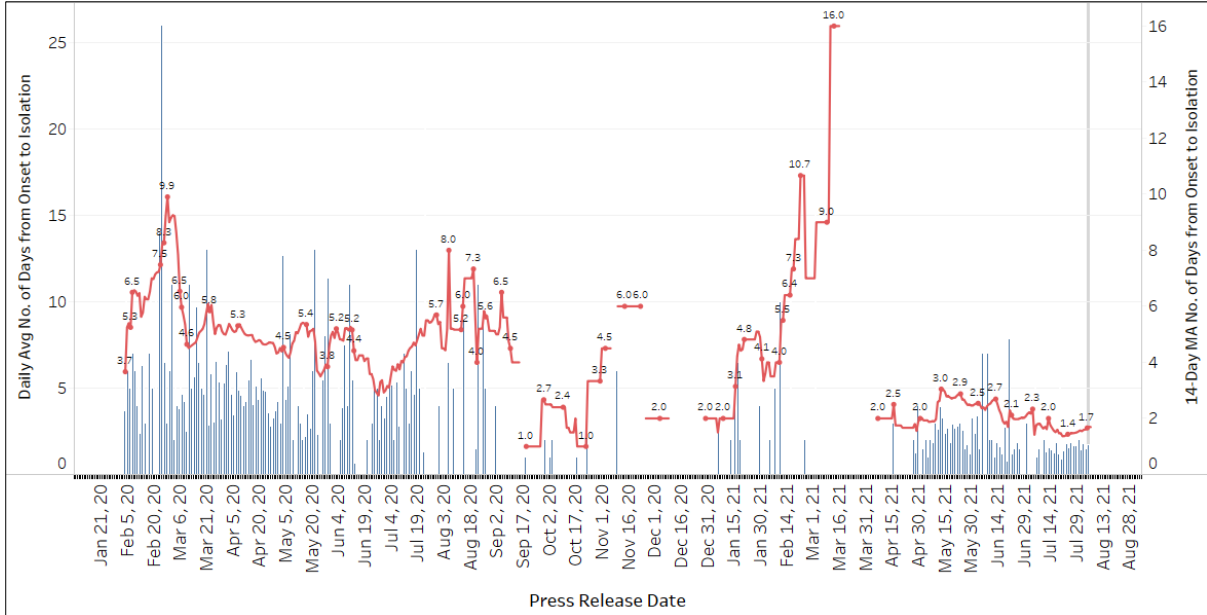


Figure 1.7: Average Number of Days from Onset of Symptoms to Isolation (QO, hospital admission or notification to MOH) for Community Cases Detected through Surveillance in Each Day. Line represents the 14-day moving average; Bar represents the daily average⁷



⁶ Date of notification was used for cases that did not display any symptoms. The numbers with onset in the past few days may see an increase as more cases are notified.

⁷ Area in grey demarcates data points for the past 3 days where some cases may still be pending epidemiological investigation. The bar graph shows the daily average number of days from symptoms onset to isolation, while the line graph shows the moving average for the past 14 days. Both graphs exclude cases with no onset date (asymptomatic) in the computation of the average. Community cases with symptoms who are isolated on the same day that symptoms occurred would have an isolation time of 0. There is a gap in the line graph from 16 to 18 Sep as there are no symptomatic cases in the preceding 14 days.

Figure 1.8: Weekly Reclassifications of Previously Reported Cases (next update will be on 9 Aug)

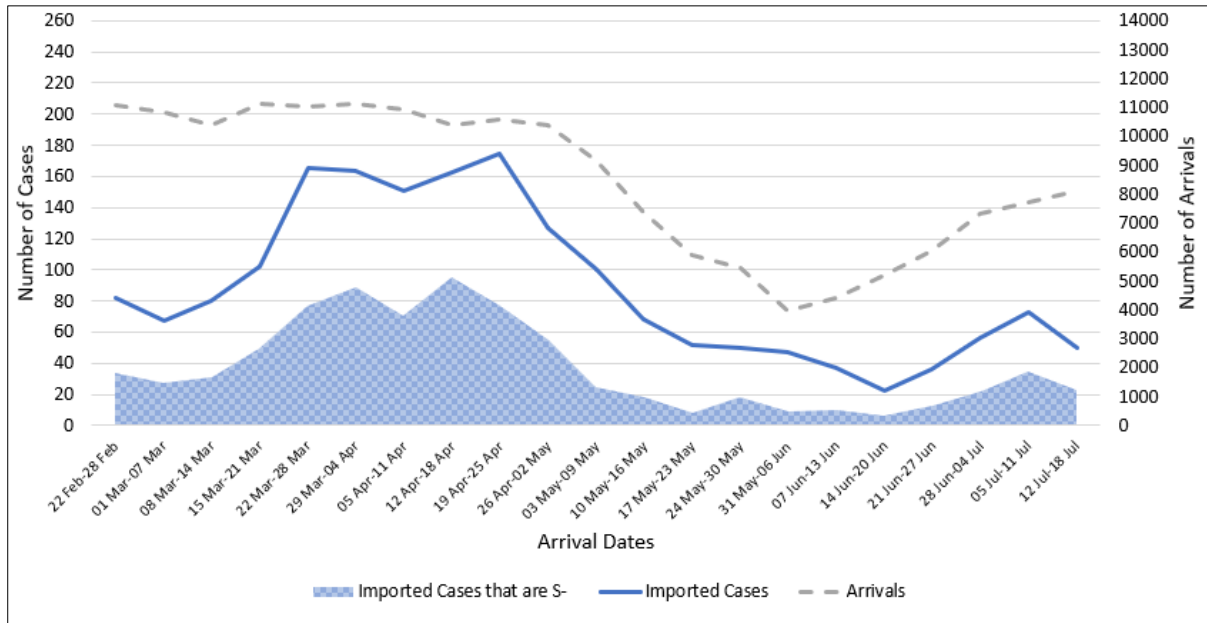
	Imported	Community Linked	Community Unlinked	Dorm Residents	Total
Total number of cases as at 26 Jul	4,999	3,689	1,093	54,533	64,314
Cases reported 27 Jul - 02 Aug	37	541	294	27	899
Net reclassifications of previously reported cases, incorporated 27 Jul - 02 Aug	-1	36	-35	0	0
Total number of cases as at 02 Aug	5,035	4,266	1,352	54,560	65,213

(2) Imported COVID 19 Cases

Figure 2.1: Serology and Symptom Status of Imported Cases Reported from 24 Jul to 30 Jul

Symptoms	S+	S-	Not Serology Tested	Pending Serology Result	Total No. of Cases
Asymptomatic	21	1	0	0	22
Symptomatic	9	6	0	1	16
Total	30	7	0	1	38

Figure 2.2: Weekly Total Number of Imported Cases, Imported Cases that are S- and Arrivals from 22 Feb 21 to 18 Jul 21⁸ (next update will be on 9 Aug)



⁸ Data from the past 2 weeks are excluded as cases on SHN who arrived in the past 2 weeks may not have their test results yet. "Imported Cases that are S-" comprises imported cases who are (a) serology negative; or (b) not tested for serology.

(3) Number of COVID 19 Cases in Hospitals and Community Care Facilities**Figure 3.1:** Summary of Confirmed Cases by Status in the Past 14 Days

Press Release Date	Currently Admitted in Hospitals		In Care Facilities ⁹	Total Recovered		Total Demised	Total
	ICU	General Wards		Completed Isolation	Discharged from Hospital		
24-Jul	1	489	932	58,867	3,728	37	64,054
25-Jul	2	522	1,013	58,874	3,731	37	64,179
26-Jul	2	549	1,109	58,884	3,733	37	64,314
27-Jul	2	543	1,234	58,899	3,738	37	64,453
28-Jul	2	565	1,322	58,916	3,747	37	64,589
29-Jul	3	569	1,434	58,926	3,753	37	64,722
30-Jul	7	564	1,520	58,972	3,761	37	64,861
31-Jul	7	597	1,477	59,096	3,767	37	64,981
1-Aug	8	582	1,518	59,162	3,795	37	65,102
2-Aug	7	595	1,540	59,226	3,807	38	65,213
3-Aug	7	585	1,433	59,420	3,832	38	65,315
4-Aug	7	548	1,459	59,507	3,850	39	65,410
5-Aug	8	569	1,434	59,592	3,865	40	65,508
6-Aug	7	539	1,482	59,654	3,882	41	65,605

⁹ Community Care Facilities (i.e. D'Resort, Tuas South, AMK ITE, Village Hotel Sentosa, CSC Loyang), Community Hospitals (i.e. Bright Vision Hospital) and other care facilities.

(4) Number of Stay Home Notice (SHN) Issued

Figure 4.1: Daily Number of SHN issued (19 Feb 2020 to 5 Aug 2021)

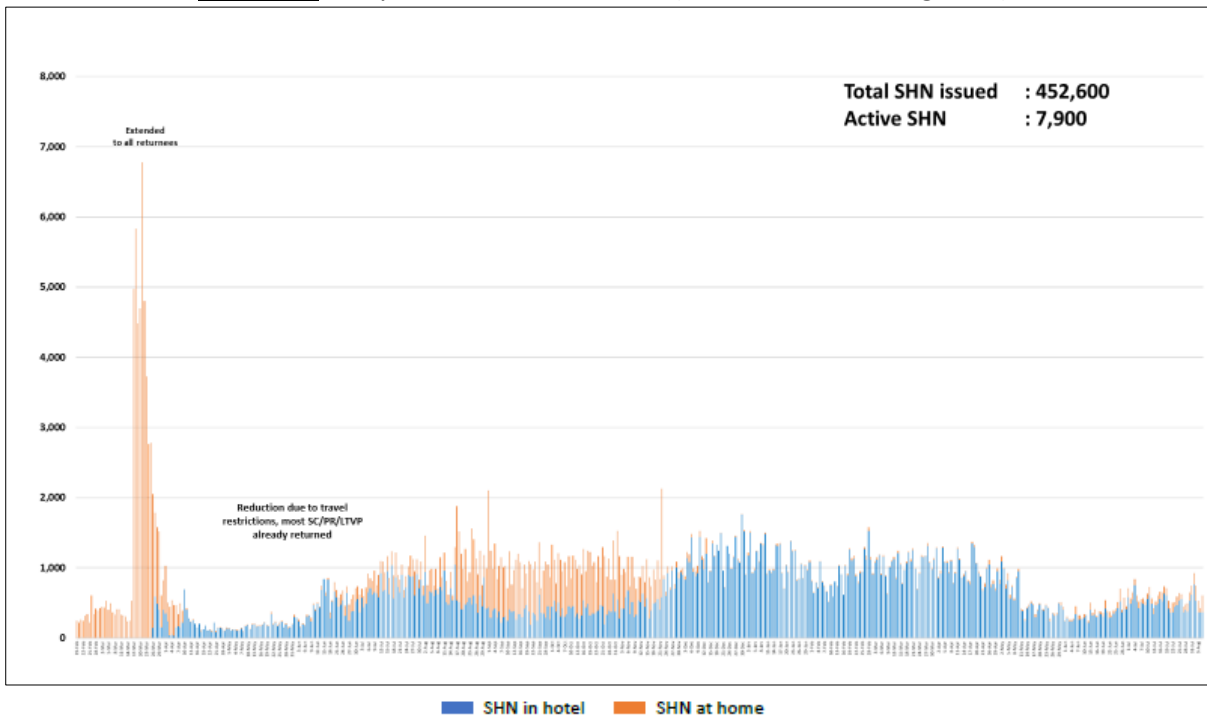
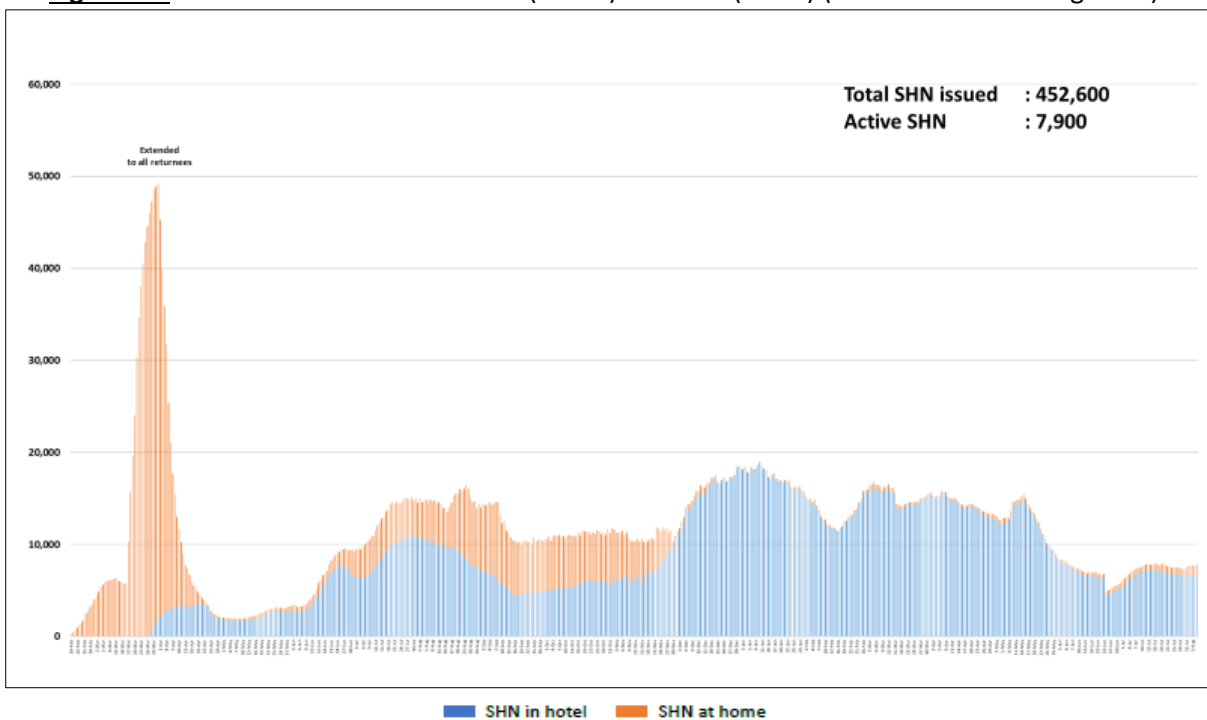


Figure 4.2: Active Stock Number of SHN (Home) and SHN (Hotel) (19 Feb 2020 to 5 Aug 2021)



(5) Number of Quarantine Orders (QO) Generated

Figure 5.1: Daily Number of QOs Generated

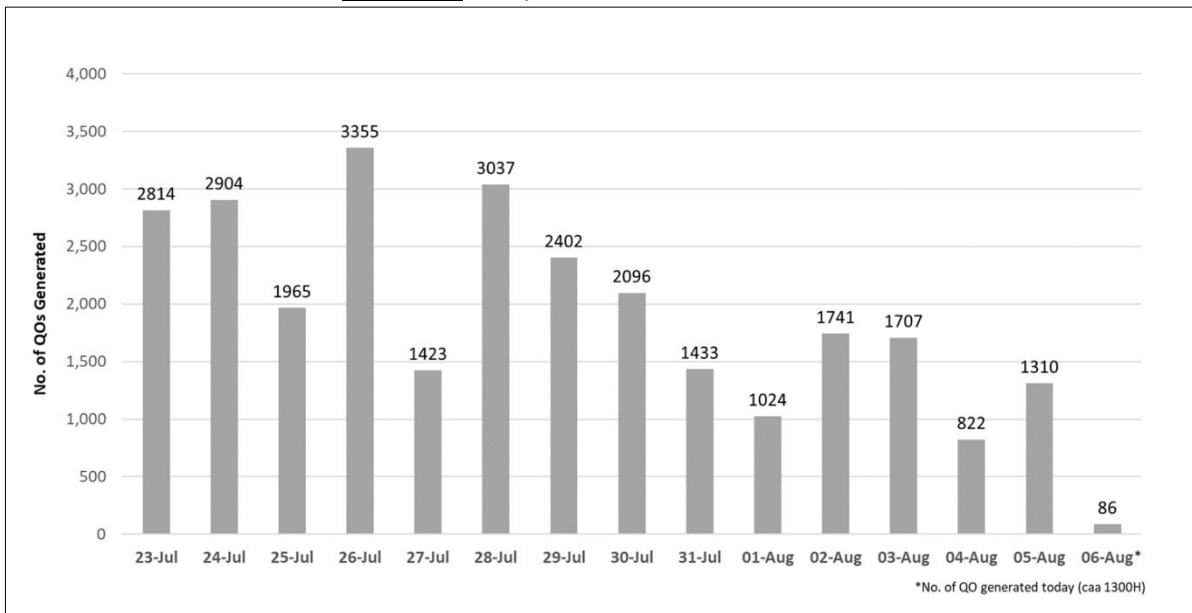


Figure 5.2: Active Number of Persons Under Quarantine (PUQs)

